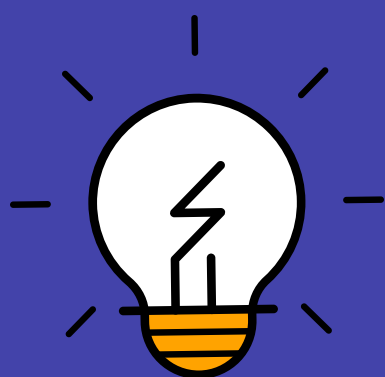


STEM AT ELLERSTON PUBLIC SCHOOL

JOURNEY SUMMARY



Establishment of a makerspace environment and technology access across the whole school.

JOURNEY FOCUS AREAS

- Collaborative learning
- Problem solving
- Student engagement in science, technologies and maths

TIMELINE AND MILESTONES

2015

- Non-existent and zero teacher inclination.

2016

- Teachers began facilitating engineering days.

2017

- Teachers attended professional development and collegial visits were undertaken.
- Grant was applied for and was successful. Purchasing of iPads, Lego, storage and robots occurred.

2018

- Professional development with Ralph Pirozzo.
- Integration of STEM into science, geography and history KLA's with a focus on engagement.
- 3D printing.

POSITIVE IMPACT AND EMOTIONS

Opportunities for older students to lead and model "how to learn"

Challenging

Enjoyable



Collaborative learning in an engaging environment

Frustration

Enlightening

MAIN CHALLENGE & SOLUTION

Implementing across K-6 in a small school setting. It was necessary to assign children with rotating roles in order to eliminate domination or lack of participation.