

Identify your professional learning needs and compare your practice to the Professional Experience - Evidence guide for supervising teachers

Plan for and reflect on professional improvement to support your (G)TPA and professional experience.

Name:

Date #1:

Date #2:

STANDARD 1 - PROFESSIONAL KNOWLEDGE			I need more knowledge and modelling of this standard.	I have commenced thinking about and acting on this standard	I have developed at the graduate level in this standard
Know students and how they learn.					
Focus Areas			I could.. What help do I need?	I am continuing work on...	My evidence includes... I could extend myself by?
1.1.1	Physical, social and intellectual development and characteristics of students	Demonstrate knowledge and understanding of physical, social and intellectual development and characteristics of students and how these may affect learning.			
1.2.1	Understand how students learn	Demonstrate knowledge and understanding of research into how students learn and the implications for teaching.			

1.3.1	Students with diverse linguistic, cultural, religious and socioeconomic background	Demonstrate knowledge of teaching strategies that are responsive to the learning strengths and needs of students from diverse linguistic, cultural, religious and socioeconomic backgrounds.			
1.4.1	Strategies for teaching Aboriginal and Torres Strait Islander students	Demonstrate broad knowledge and understanding of the impact of culture, cultural identity and linguistic background on the education of students from Aboriginal and Torres Strait Islander backgrounds.			
1.5.1	Differentiate teaching to meet the specific learning needs of students across the full range of abilities	Demonstrate knowledge and understanding of strategies for differentiating teaching to meet the specific learning needs of students across the full range of abilities.			
1.6.1	Strategies to support full participation of students with disability	Demonstrate broad knowledge and understanding of legislative requirements and teaching strategies that support participation and learning of students with disability.			

STANDARD 2 - PROFESSIONAL KNOWLEDGE			I need more knowledge and modelling of this standard.	I have commenced thinking about and acting on this standard	I have developed at the graduate level in this standard.
Know the content and how to teach it.					
Focus Areas			I could... What help do I need?	I am continuing work on...	My evidence includes... I could extend myself by?
2.1.1	Content and teaching strategies of the teaching area	Demonstrate knowledge and understanding of the concepts, substance and structure of the content and teaching strategies of the teaching area.			
2.2.1	Content selection and organisation	Organise content into an effective learning and teaching sequence.			
2.3.1	Curriculum, assessment and reporting	Use curriculum, assessment and reporting knowledge to design learning sequences and lesson plans.			

2.4.1	Understand and respect Aboriginal and Torres Strait Islander people to promote reconciliation between Indigenous and non-Indigenous Australians	Demonstrate broad knowledge of, understanding of and respect for Aboriginal and Torres Strait Islander histories, cultures and languages.			
2.5.1	Literacy and numeracy strategies	Know and understand literacy and numeracy teaching strategies and their application in teaching areas.			
2.6.1	Information and Communication Technology (ICT)	Implement teaching strategies for using ICT to expand curriculum learning opportunities for students.			

STANDARD 3- PROFESSIONAL PRACTICE Plan for and implement effective teaching and learning.			I need more knowledge and modelling of this standard.	I have commenced thinking about and acting on this standard	I have developed at the graduate level in this standard.
Focus Areas			I could.. What help do I need?	I am continuing work on...	My evidence includes... I could extend myself by?
3.1.1	Establish challenging learning goals	Set learning goals that provide achievable challenges for students of varying abilities and characteristics.			
3.2.1	Plan, structure and sequence learning programs	Plan lesson sequences using knowledge of student learning, content and effective teaching strategies.			
3.3.1	Use teaching strategies	Include a range of teaching strategies.			

3.4.1	Select and use resources	Demonstrate knowledge of a range of resources, including ICT, that engage students in their learning.			
3.5.1	Use effective classroom communication	Demonstrate a range of verbal and non-verbal communication strategies to support student engagement.			
3.6.1	Evaluate and improve teaching programs	Demonstrate broad knowledge of strategies that can be used to evaluate teaching programs to improve student learning.			
3.7.1	Engage parents/ carers in the educative process	Describe a broad range of strategies for involving parents/ carers in the educative process.			

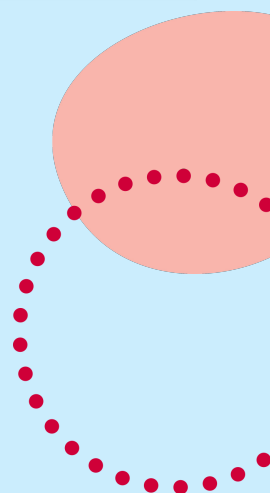
STANDARD 4 - PROFESSIONAL PRACTICE

Create and maintain supportive and safe learning environments.

Focus Areas

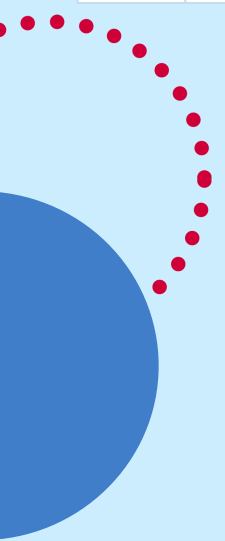
STANDARD 4 - PROFESSIONAL PRACTICE			I need more knowledge and modelling of this standard.	I have commenced thinking about and acting on this standard	I have developed at the graduate level in this standard.
Focus Areas			I could.. What help do I need?	I am continuing work on...	My evidence includes... I could extend myself by?
4.1.1	Support student participation	Describe a broad range of strategies for involving parents/ carers in the educative process.			
4.2.1	Manage classroom activities	Demonstrate the capacity to organise classroom activities and provide clear directions.			
4.3.1	Manage challenging behaviour	Demonstrate knowledge of practical approaches to manage challenging behaviour.			

4.4.1	Maintain student safety	Describe strategies that support students' wellbeing and safety working within school and/or system, curriculum and legislative requirements.			
4.5.1	Use ICT safely, responsibly and ethically	Demonstrate an understanding of the relevant issues and the strategies available to support the safe, responsible and ethical use of ICT in learning and teaching.			



STANDARD 5 - PROFESSIONAL PRACTICE			I need more knowledge and modelling of this standard.	I have commenced thinking about and acting on this standard	I have developed at the graduate level in this standard.
Assess, provide and report on student learning.					
Focus Areas			I could.. What help do I need?	I am continuing work on...	My evidence includes... I could extend myself by?
5.1.1	Assess student learning	Demonstrate understanding of assessment strategies, including informal and formal, diagnostic, formative and summative approaches to assess student learning.			
5.2.1	Provide feedback to students on their learning	Demonstrate an understanding of the purpose of providing timely and appropriate feedback to students about their learning.			
5.3.1	Make consistent and comparable judgements	Demonstrate understanding of assessment moderation and its application to support consistent and comparable judgements of student learning.			

5.4.1	Interpret student data	Demonstrate the capacity to interpret student assessment data to evaluate student learning and modify teaching practice.			
5.5.1	Report on student achievement	Demonstrate understanding of a range of strategies for reporting to students and parents/carers and the purpose of keeping accurate and reliable records of student achievement.			



STANDARD 6 - PROFESSIONAL ENGAGEMENT Engage in professional learning.			I need more knowledge and modelling of this standard.	I have commenced thinking about and acting on this standard	I have developed at the graduate level in this standard.
Focus Areas			I could.. What help do I need?	I am continuing work on...	My evidence includes... I could extend myself by?
6.1.1	Identify and plan professional learning needs	Demonstrate an understanding of the role of the Australian Professional Standards for Teachers in identifying professional learning needs.			
6.2.1	Engage in professional learning and improve practice	Understand the relevant and appropriate sources of professional learning for teachers.			
6.3.1	Engage with colleagues and improve practice	Seek and apply constructive feedback from supervisors and teachers to improve teaching practices.			
6.4.1	Apply professional learning and improve student learning	Demonstrate an understanding of the rationale for continued professional learning and the implications for improved student learning.			

STANDARD 7- PROFESSIONAL ENGAGEMENT

Engage professionally with colleagues, parents/carers and the community.

I need more knowledge and modelling of this standard.

I have commenced thinking about and acting on this standard

I have developed at the graduate level in this standard.

Focus Areas

I could..
What help do I need?

I am continuing work on...

My evidence includes...
I could extend myself by?

			I need more knowledge and modelling of this standard.	I have commenced thinking about and acting on this standard	I have developed at the graduate level in this standard.
Focus Areas			I could.. What help do I need?	I am continuing work on...	My evidence includes... I could extend myself by?
7.1.1	Meet professional ethics and responsibilities	Understand and apply the key principles described in codes of ethics and conduct for the teaching profession.			
7.2.1	Comply with legislative, administrative and organisational requirements	Understand the relevant legislative, administrative and organisational policies and processes required for teachers according to school stage.			
7.3.1	Engage with the parents/carers	Understand strategies for working effectively, sensitively and confidentially with parents/carers.			
7.4.1	Engage with professional teaching networks and broader communities	Understand the role of external professionals and community representatives in broadening teachers' professional knowledge and practice.			