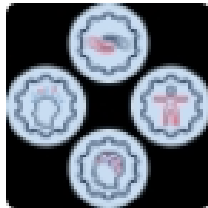


As we begin, why not join the HPGE SWS and Viva networking groups?

- HPGE Statewide Staffroom and HPGE Viva engage group



HPGE Statewide staffroom



High Potential and Gifted Education

Conversations About Files Events

How to embed HPGE into your teaching



Early Career Teachers

Dr Sue Vasilevska
HPGE specialist

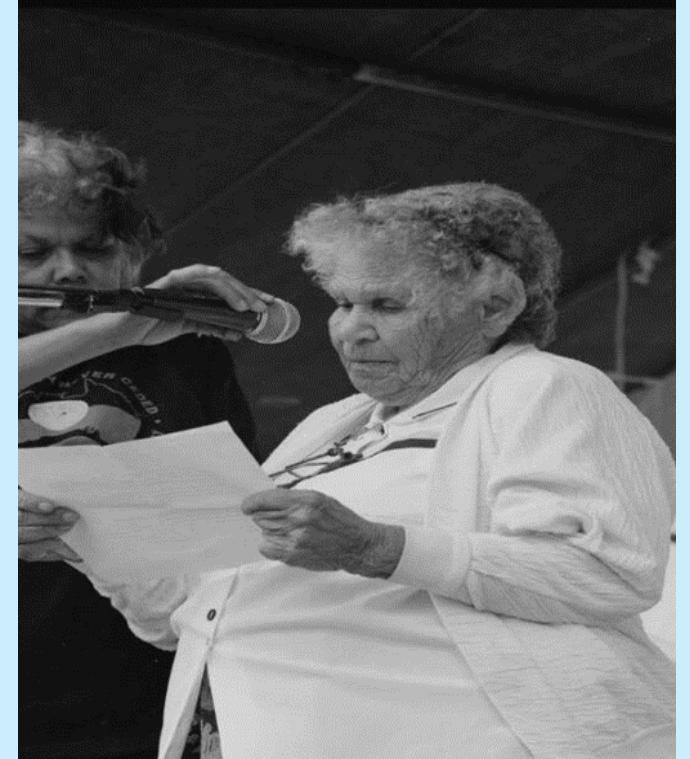
Sarah Bryce
Rel CIA - HPGE

September
2023

Acknowledgement of Country

Colleen Smith 1921-1998 - Mum Shirl

- A Wiradjuri woman, born in Erambie Mission, Cowra.
- Moved to Sydney with her family in the mid-1930s.
- Suffered from epilepsy
- Taught by her grandfather, couldn't read or write English, but spoke 16 Aboriginal languages.
- The only Australian woman given unrestricted access to prisons in NSW.
- In 1971 she co-founded Australia's first Aboriginal Medical Service in Redfern.
- Helped raise over sixty children in need of a home.
- Received awards for Parent of the Year, an Order of Australia and an Order of the British Empire.



Where are you now?



Overview



- the 4 domains of high potential: intellectual, creative, physical and social-emotional.
- how to identify HPGE students in the classroom
- how to use the Differentiation Adjustment Tool
- practical activities to support engagement
- where to find resources and further professional learning

What do we mean by HPG students?



Image © State of New South Wales (Department of Education) 2022.

4 domains of potential



Misconceptions about high potential and gifted learners

6
misconceptions
about HPG
learners

1
HPG students will
make it on their own.

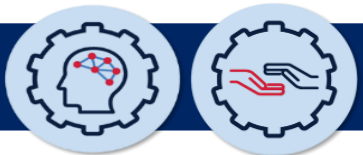
2
HPG students are a
homogeneous
group.

3
You can't have
high potential
and a disability.

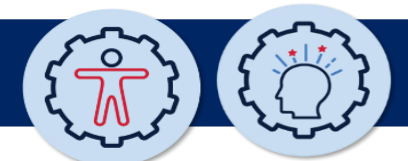
4
Acceleration is not
effective or can be
harmful

5
Identification of
HPG students is
obvious.

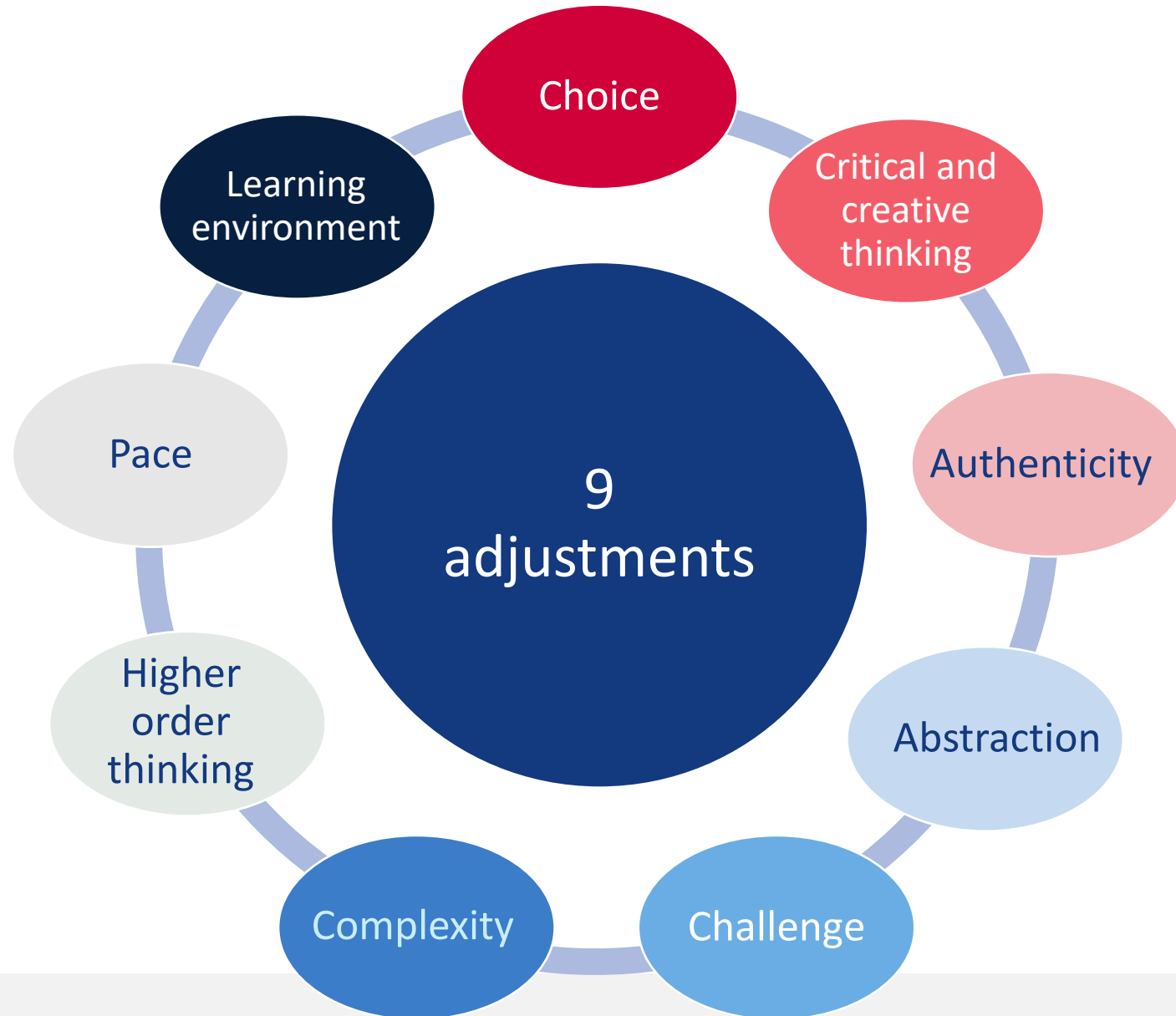
6
A differentiated
curriculum is
sufficient.



How can the 4 domains be considered ?



Differentiation Adjustment Tool (DAT)



Differentiation Adjustment Tool

- Choose one adjustment, choose one or 2 strategies and think about how you could embed them into future planning / a lesson for next week etc.
- Share one idea in the chat
- Exploring the DAT tool further:
Resource Hub – videos, posters, discussion questions
- links to these coming up!

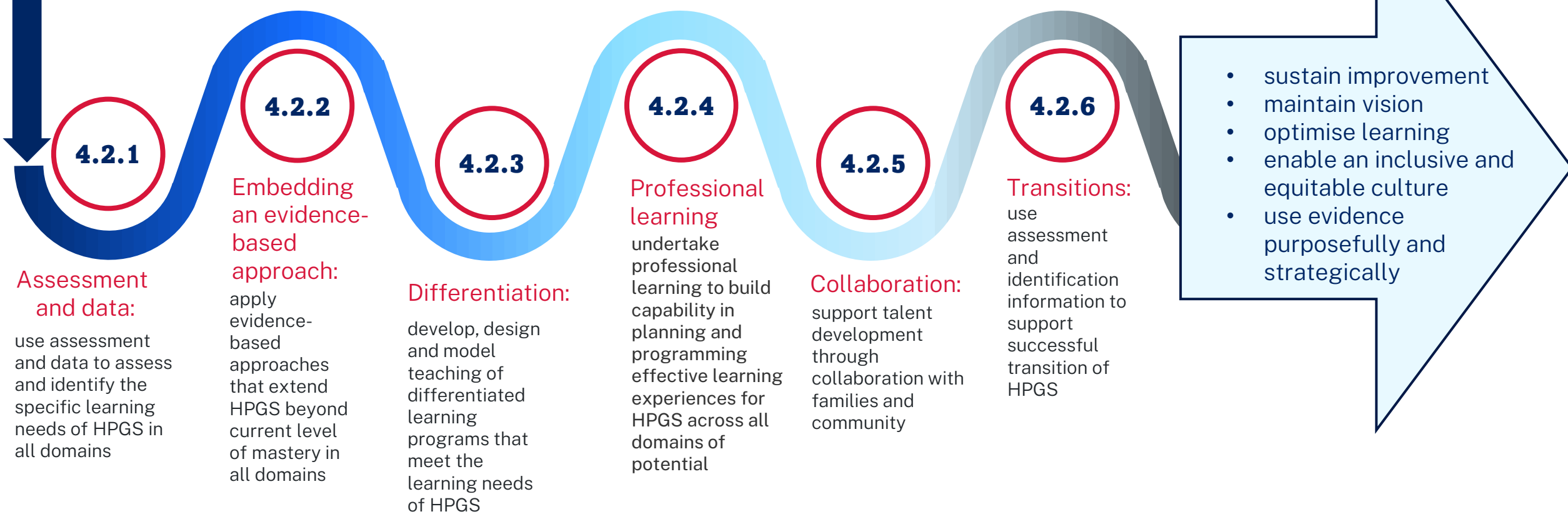


Pause and reflect

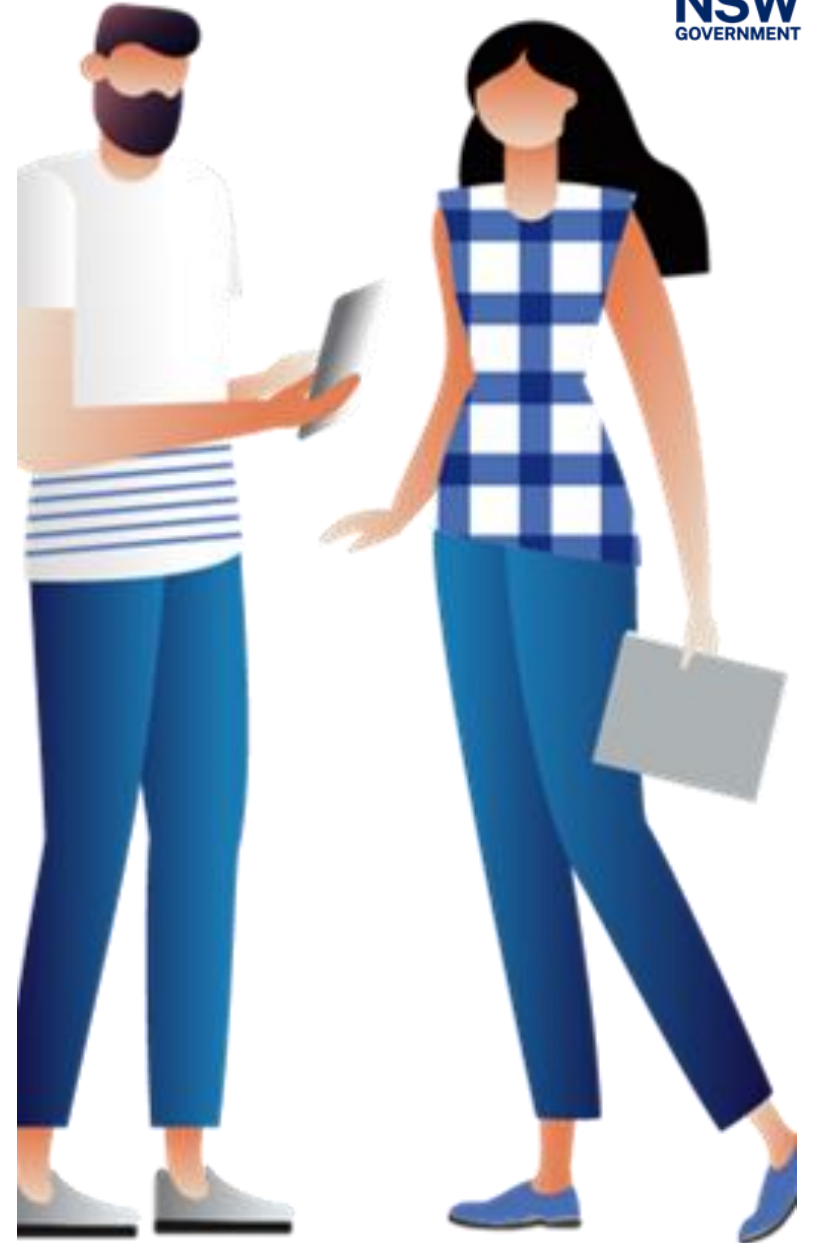
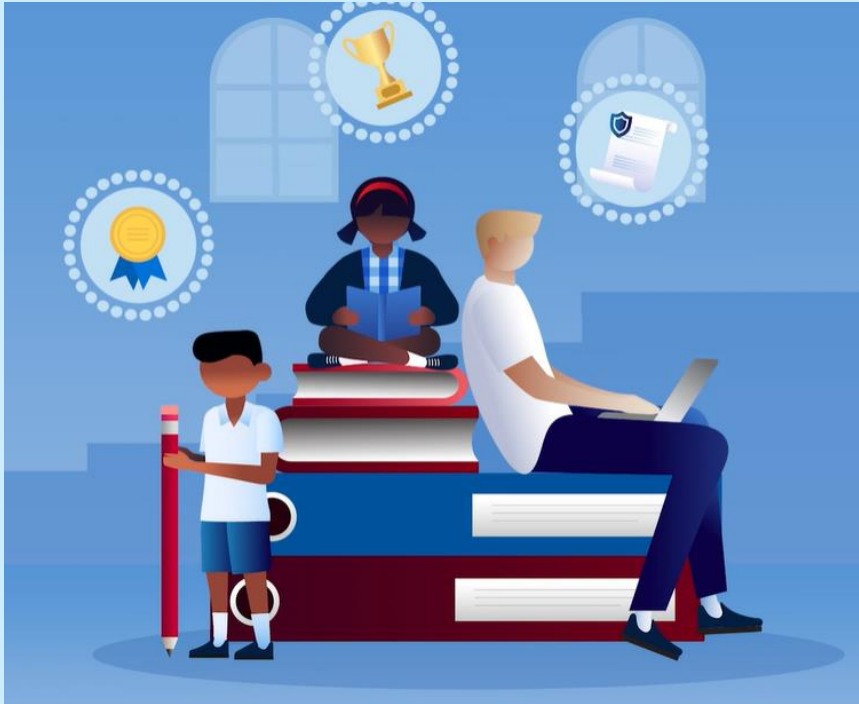


HPGE Policy teacher responsibilities

Deputy principals,
assistant principals,
APCIs, HT,
support teachers to:



HPGE resources



Support for schools



- The [High Potential and Gifted Education Policy](#)
- [Revisiting Gifted Education](#) literature review
- A [DEL and PSL package](#)
- A dedicated [HPGE web-section](#) and [HPGE PL and Resource Hub](#)
- [The HPGE Policy Evaluation and Planning Tool](#)
- [HPGE Professional learning courses](#)
- [Curriculum planning for every student in every classroom \(AC00180\)](#)
- [Illustrations of practice](#), including early adopter school journeys
- [Differentiation Adjustment Tool](#)
- [HPGE Statewide Staffroom](#) and [HPGE Viva engage group](#)

High potential and gifted education

[Home](#) > [Teaching and learning](#) > High potential and gifted education

The High Potential and Gifted Education Policy applies to all NSW public schools, teachers, and students.

[Read the policy](#)



HPGE – illustrations of practice



Illustrations of practice

Engage with films, student stories and podcasts that support schools to implement the High Potential and Gifted Education Policy in their contexts.



HPGE Professional Learning and Resource Hub

Tier 1 courses

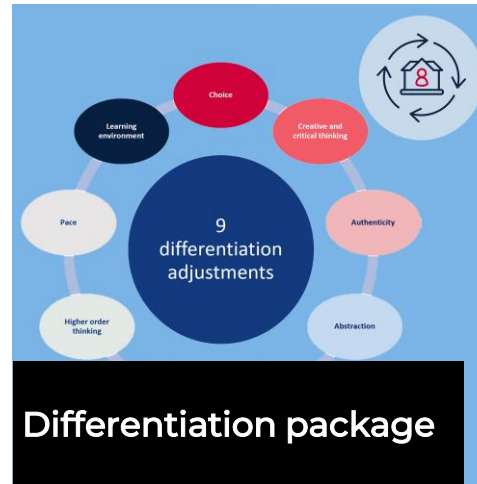


Finding high potential

Tier 2 Course 1

Evidence-based talent development

Tier 2 Course 2



Differentiation package



Acceleration Package



Discussion papers



HPGE Evaluation and Planning Tool



DEL/PSL Package
Leading learning for HPGS

Professional learning options



Resources



intellectual



social-emotional

Key actions and guiding principles of the HPGE policy



physical



creative

5 key actions



Evaluate



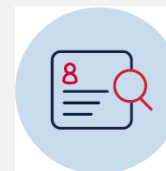
Implement



Build capacity



Collaborate



Assess and identify

Guiding principles



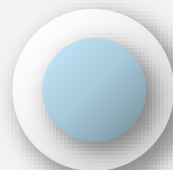
Excellence and equity

All students regardless of background or personal circumstance require access to learning programs that enable them to aspire to and achieve personal excellence.



High expectations for all students

Our commitment to high expectations for all students includes high potential and gifted students.



Quality teaching, learning, leadership

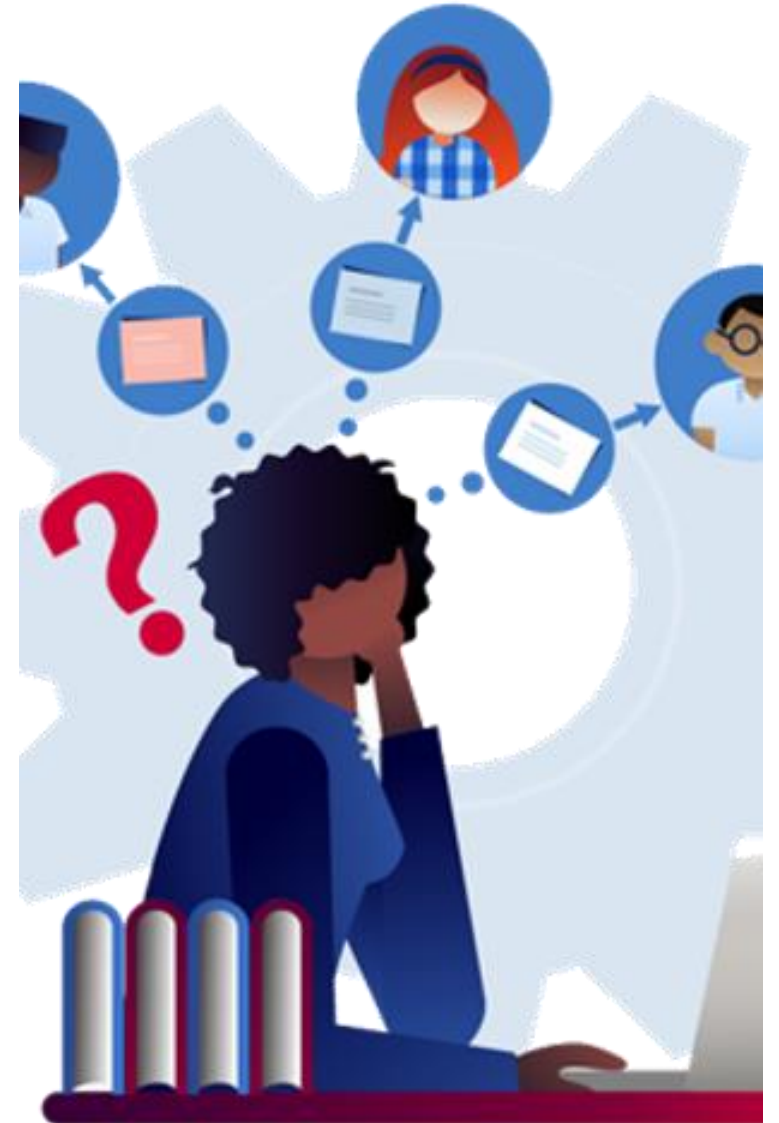
Achieving excellence for high potential and gifted students is underpinned by effective school environments including quality teaching, learning and leadership.



A continuum of potential

Potential exists along a continuum, where degrees of potential require differing approaches and levels of adjustment and intervention.

Questions and suggestions?





Contact us at:
hpge@det.nsw.edu.au