

Teachers and Non-Teachers

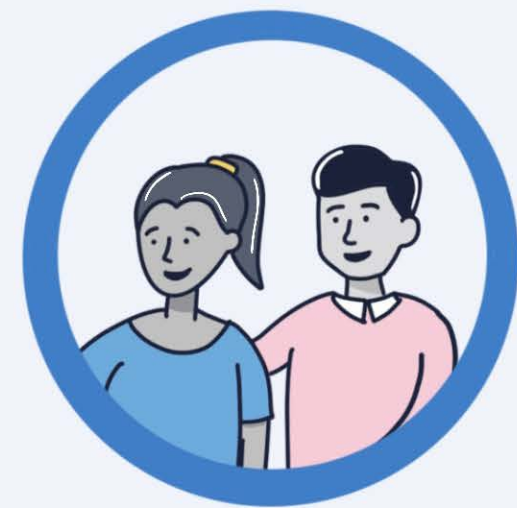
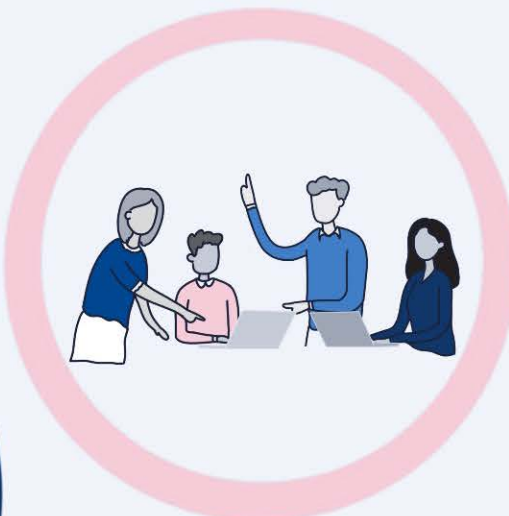
- Professional Learning
- Develop skills
 - Builds skill capability
 - Relevant to the role



Align PL to school and departmental



Mentoring and Sharing of knowledge



Principles for building the capability of all staff to ensure a skilled, effective and professional workforce

High Impact Professional Learning

- The Four Principles**
- 1 PL is driven by the needs of the role
 - 2 Leadership teams enable PL
 - 3 Staff are supported to apply PL in practice
 - 4 The outcomes of PL are evaluated

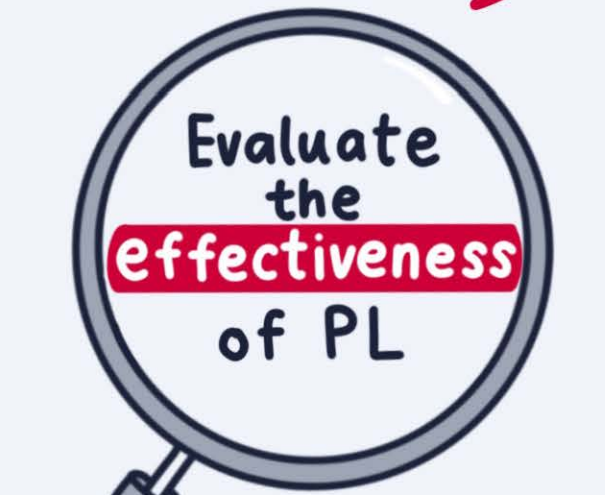
School Leaders

Staff are supported to apply PL in practice

PL Schedule

M	T	W	TH	F
●				●
		●		

Focus on school improvement



Build high performing teams

School Community

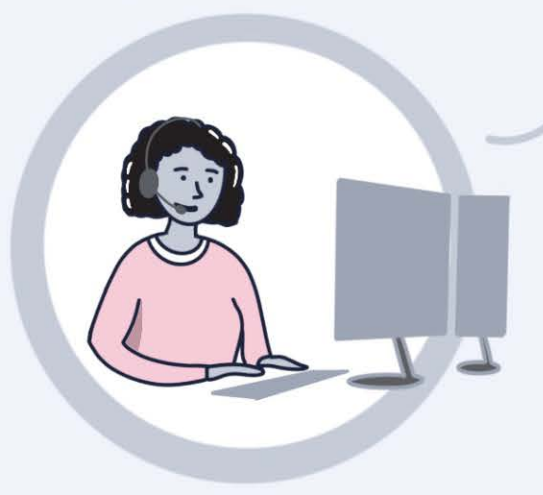
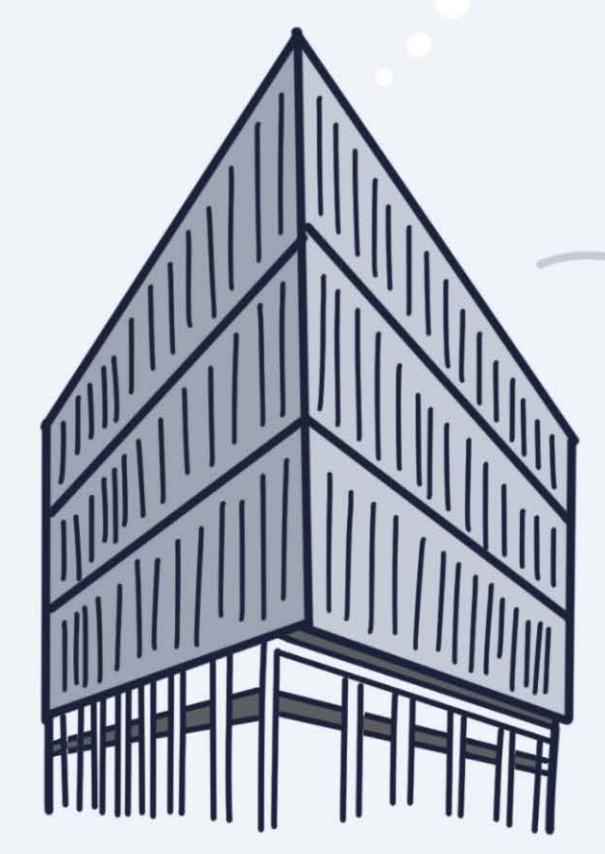
Every student is known, valued and cared for.



Excellence in school administration

Department

Provides PL for all roles in schools



Provides access to high quality PL opportunities