

A quick guide to Artificial Intelligence

Artificial intelligence (AI) is a machine or computer program that can do human-like 'thinking' to complete a task.

AI can be in robots that look like people or animals.

AI can run in the background of a computer program like a phone assistant.

Types of AI

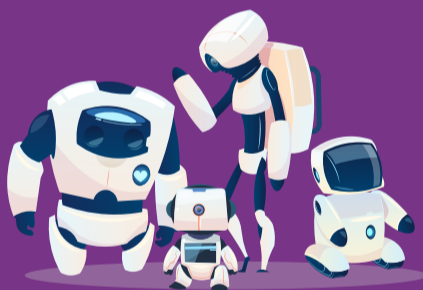
Adapted from Hintz, 2016

Narrow AI



This type of AI is able to do a single or focused task and may be better at this than humans, e.g. AI chess player, computer programs that know faces.

General AI



This type of AI would be able to think and act just like a human. This type of AI is only in science fiction.

Super AI



This type of AI (or superintelligence) would be better at thinking in all ways than humans. This type of AI is only in science fiction.

Machine learning is the way computers can automatically learn from data to find patterns and make decisions, without much help from humans.

Scientists and ordinary people are asking a lot of questions about AI because they want it to be used to make people's lives better.

Infographic by Erica Southgate PhD, Karen Blackmore PhD, Stephanie Pieschl PhD, and Susan Grimes PhD. It is based on research by:

- Gulson, K. N. et al. (2018). Education, work and Australian society in an AI world. A review of research literature and policy recommendations. Research Report, Gonski Institute for Education.
- Hintze, A. (2016). Understanding the four types of AI, from reactive robots to self-aware beings. November 14, 2016.
- Luckin, R. et al. (2016). Intelligence unleashed: An argument for AI in Education. Pearson Education, London.
- Russell, S. J., & Norvig, P. (2016). Artificial intelligence: a modern approach. Pearson Education Limited.

Design by Tyhe Reading - www.tyhereading.com. Licensed under the Creative Commons Attribution-NonCommercial-NoDerivatives 4.0 International License.

