

Learning from Home Checklist

Support for EAL/D Learners

The following checklist can be used when designing learning from home activities for EAL/D learners.

Access



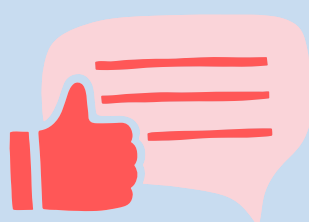
- Do learners have access to the technology required to engage in the learning from home activities?
- Do learners know how to use the required technology?

English Language Proficiency and Comprehensibility



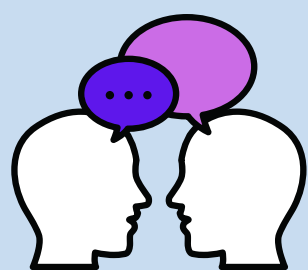
- Does the learning consider the learner's level of English language proficiency?
- Is the context of the task and the task instructions comprehensible?
- Has the work been scaffolded to meet the needs of learners?

Feedback



- How will language learning feedback be provided to students in a timely and meaningful manner?
- How can feedback be implemented?

Language Focus



- What is the language focus of the learning?
- How is language being modelled for EAL/D learners?
- What opportunities are EAL/D learners given to practise the language focus?

Prior Knowledge



- How does the learning connect to the learner's prior knowledge?
- Does the learning provide opportunities for learners to utilise their prior knowledge?