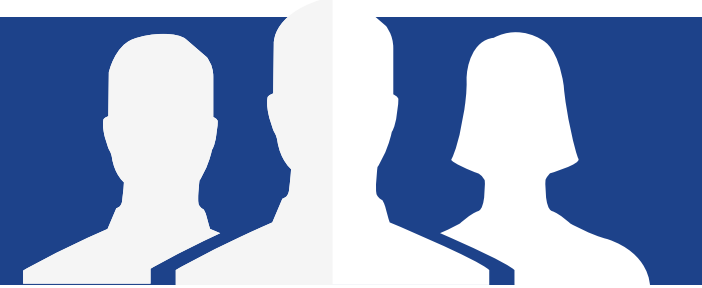


Artwork



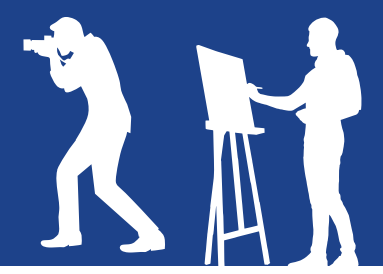
- How are signs, symbols, codes or conventions used to convey meaning?
- How are materials and techniques used to represent ideas?
- Are personal ideas or experiences represented in the work?
- Are global concerns, events, social values, philosophies or political issues evident in the work? How?
- Has the meaning of the work changed over time?

Audience



- How have art critics / historians and others (including collectors, sponsors, theorists and the public) ascribed meaning to this work? Has this changed over time?
- Who was the intended audience for the work? Has this changed over time?
- How do audiences interact with and ascribe meaning to this work?
- What ideas and experiences do you bring to an interpretation?

Artist



- How have the artist's personal experiences and values influenced the work?
- Is the artist influenced by the practice of others, an art movement or a style? How is this evident?
- Has the artist explored materials and techniques in new ways? Are they challenging conventions?
- How does the artist and/or others represent their practice?
- Do they work individually or collaboratively?

World



- How have either personal or community interests and ideas in the world been represented in the work?
- Are the specific cultural beliefs and conventions of a time and place represented in the work? How?
- Are advancements in science, technology or material practice evident in the work? How?
- Are world events or shared experiences represented? How?