

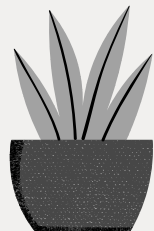
How to apply - AWS Workplace Learning Program for Aboriginal and Torres Strait Islander students...



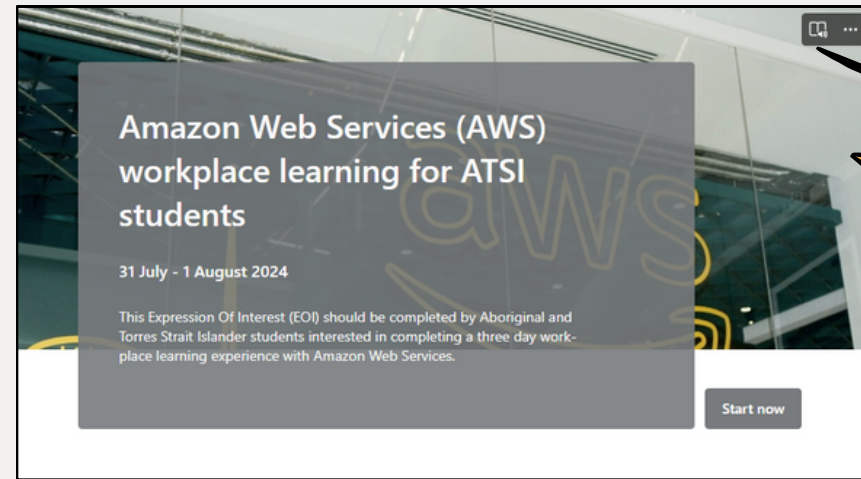
1.



Download the Flyer

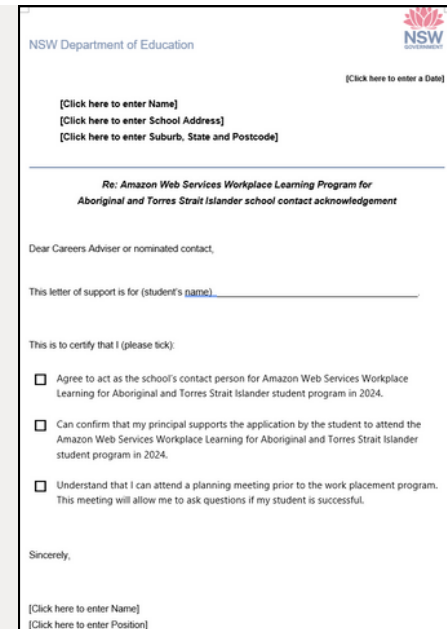


2.



Access the Expression of Interest online form

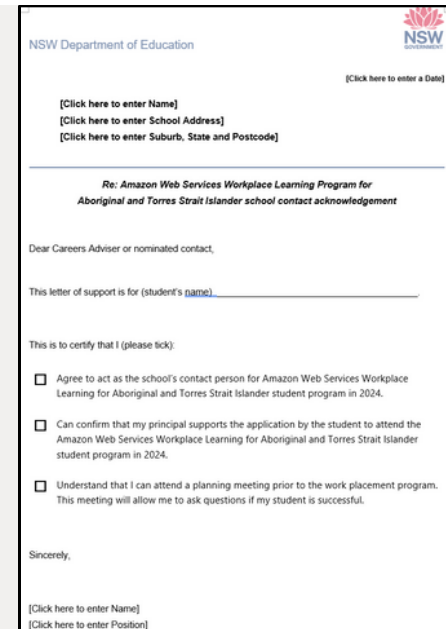
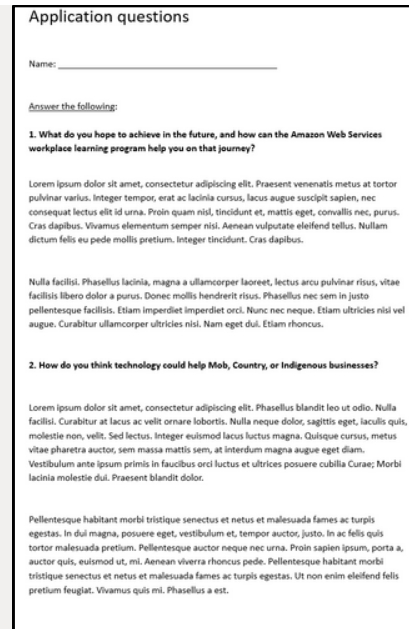
3.



Download the school supporting letter. Have the careers adviser or nominated person fill this out



4.



Submit the answers to the questions and the school supporting letter in the online form.

Ready?

Contact : Arthur Zigas, Career Learning Advisor - arthur.zigas@det.nsw.edu.au

Contact : Belinda Standage, Senior Secondary and Post Schooling Advisor - Aboriginal Education and Communities Directorate - belinda.standage@det.nsw.edu.au

