

# Student Pathways Survey and Plan

## Student Survey Guide



This guide will help you complete the Student Pathways Survey to develop your initial Pathways Plan.

Please remember:



This is **not a test**



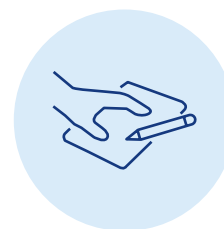
There are **no right or wrong answers** just an honest reflection of your interests



These should be **your answers not anyone else's**



Please **do not copy** or discuss with other students



You can **access** the survey and add to or adjust your answers if your goals or ideas change

## Accessing the survey

- ✓ Go to the Student Portal and enter your Department of Education user ID and password.
- ✓ Under 'Other sites' you will find a link to Creating Future Pathways: Student Survey
- ✓ Click 'Start Student Pathways Survey' to launch the survey.

## Completing the survey

### Things to know

- ✓ Read the information on the front page, including the privacy notice. This survey is about your interests and future career ideas. The survey responses will only be accessed by teachers at the school. Click on continue.
- ✓ The survey is not a test – there are no right or wrong answers. Do not ask teachers or other students for help with responses.
- ✓ Please think about each question carefully before responding. The survey includes 30 questions which should take approximately 30-40 minutes to complete.

### About the questions

- ✓ Some questions ask for responses using a Likert scale. These questions ask you to think about how confident, how likely, or how important something is to you.
- ✓ Free text boxes allow you to put in more detail for some questions.
- ✓ Complete every question and check your responses before clicking on save. If you want to clear all existing responses, you can click on reset.
- ✓ If you have missed a question, a message will tell you the question numbers to complete and you'll need to scroll back and answer before you can save.

## Your feedback report

### Saving your report

- ✓ A personalised feedback report will appear on your screen when you click save – please read it carefully.
- ✓ Return to the main menu and click Download Feedback report.
- ✓ Print the report and save it electronically. You will be able to access the report with a teacher or career advisor.
- ✓ Carefully read and think about the personalised feedback contained in the report. You may eventually like to discuss the feedback with your career adviser, teachers, friends, or family.

### Your Pathways Plan

- ✓ The survey report will be the start of your Pathways Plan. You can come back and change your plan at any time.

### Finishing up

- ✓ Log out and close the browser. It is important to ensure that other students do not access your private information.

