



Prevent and respond to student behaviours of concern including **bullying** and **cyber-bullying**.



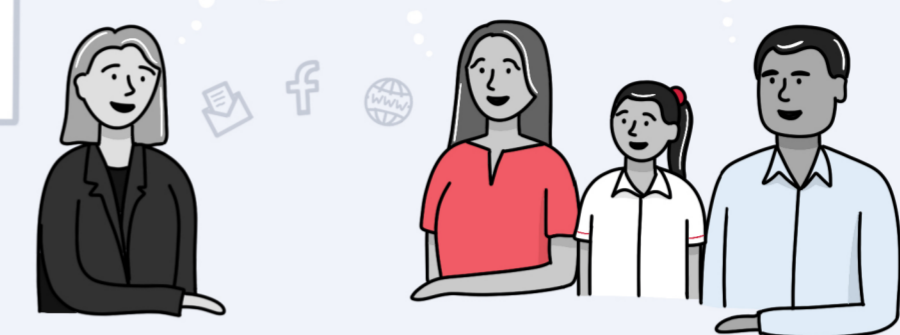
Evidence-based strategies, interventions and programs

Whole school approach

Establish expectations

Support student **learning**, **safety** and **wellbeing**.

School Community Charter



Include **AECG** and **P&C**.

Partnership with parents and carers

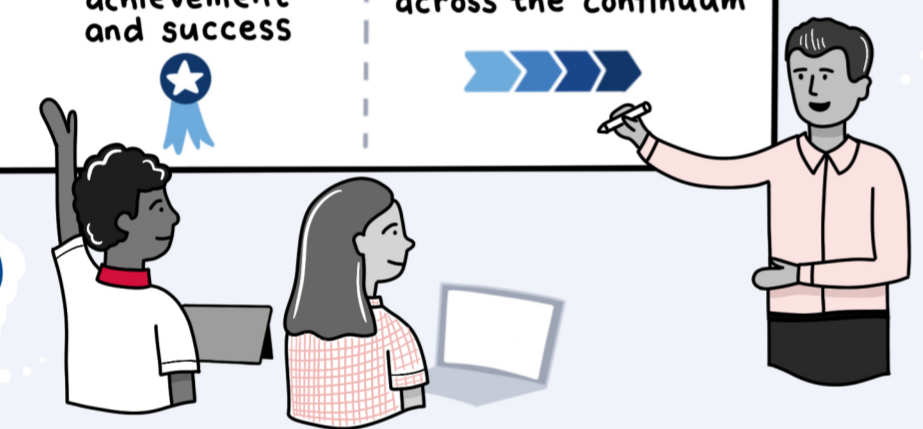
What to include in the plan...

Inclusive Practices

- Behaviour code and expectations
- Recognise student achievement and success
- Positive relationships
- Support for behaviour across the continuum

Explicitly teach and model positive behaviour.

Engaged learners

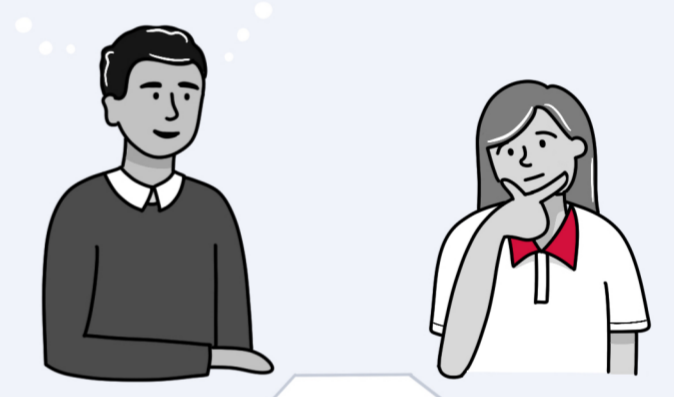


Promote and reinforce positive student behaviour and school-wide expectations

Consultation from P&C.

How and when will these practices be used.

Detention and Time-out Guidelines



Restorative practices, detention and reflection

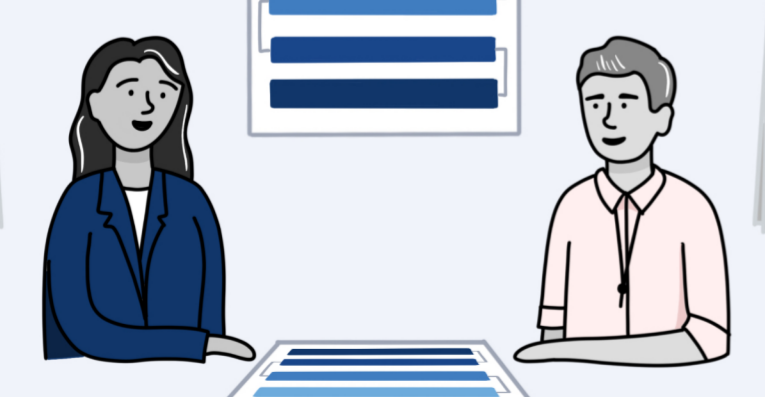
School Behaviour Support and Management Plan

Student Behaviour Policy

- Disruptive behaviours
- Bullying
- Cyber-bullying

School Process

Process for serious behaviour concerns

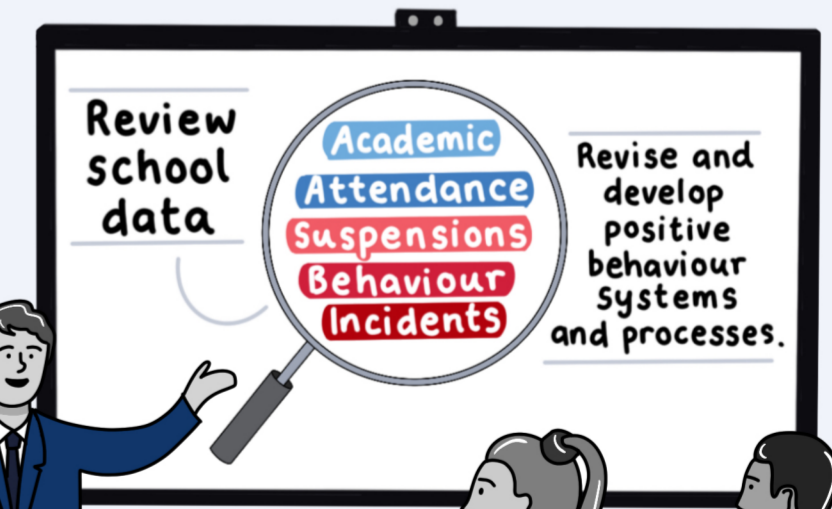


School's response to behaviours of concern

Review annually and ensure fit for purpose.

SEF School Excellence Framework

SIP Strategic Improvement Plan



What staff professional learning needs to happen?

Review Process