

# Powerful Conversations

LeLIEVRE

# Care.  
Respect.  
Support.

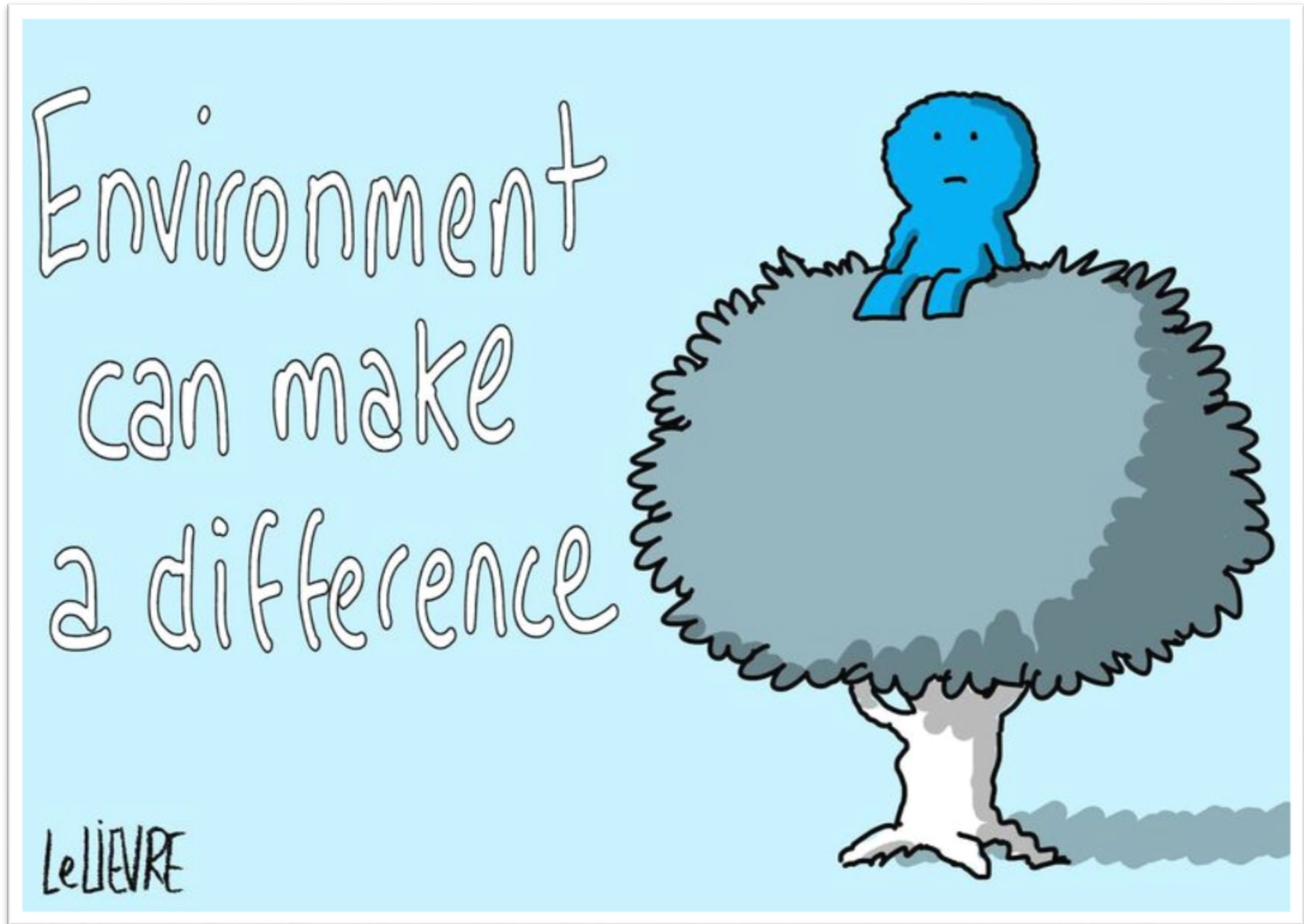
[antibullying.nsw.gov.au](http://antibullying.nsw.gov.au)



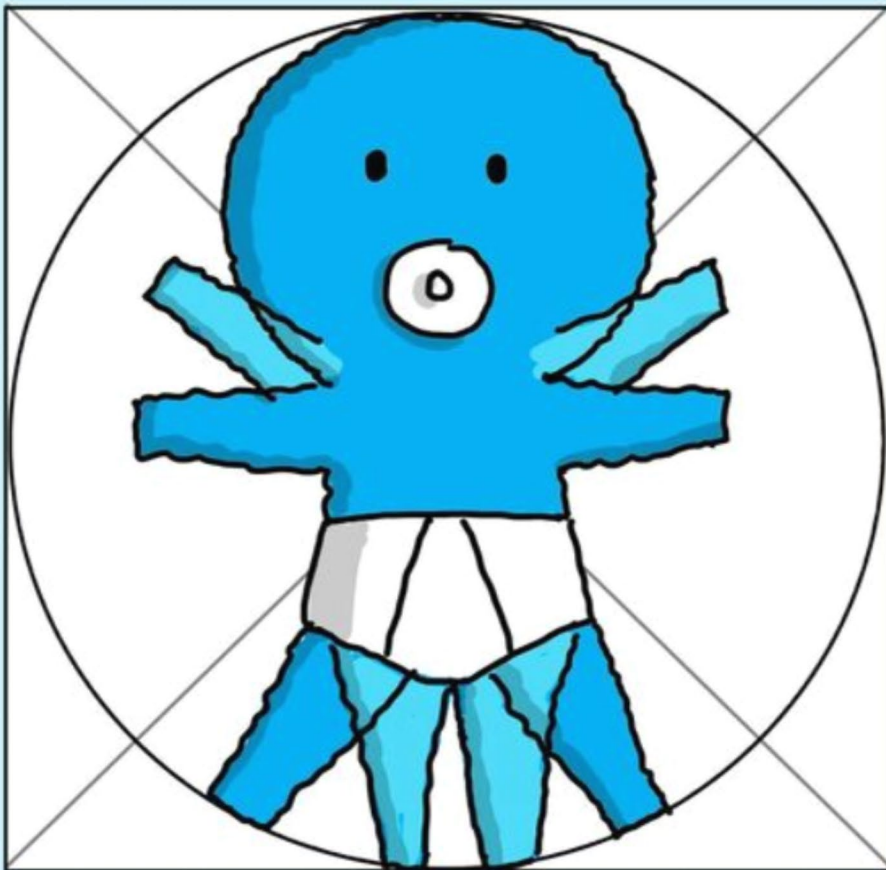
## The Four 'R's



## Environment can make a difference



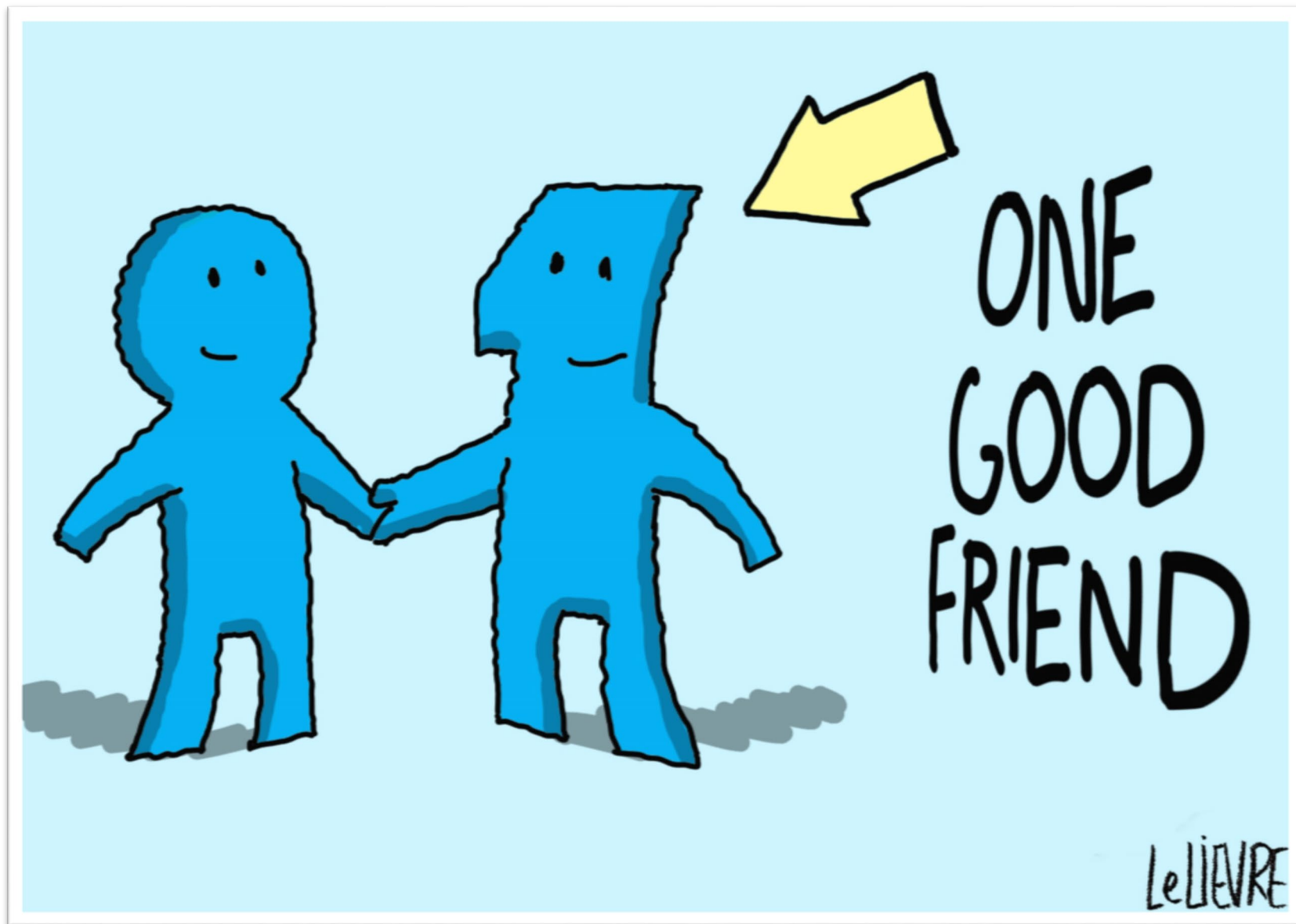
## Identifying and supporting people who may feel vulnerable



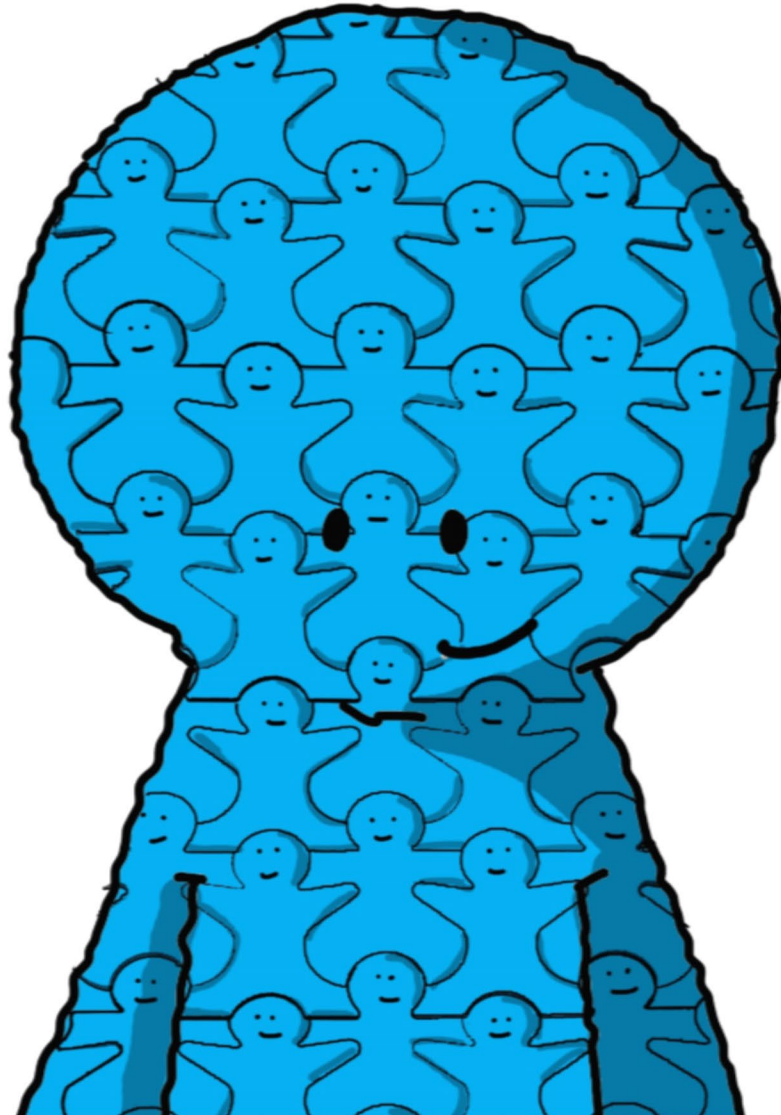
Early  
Intervention

LeLIEVRE

## One good friend



It takes a school

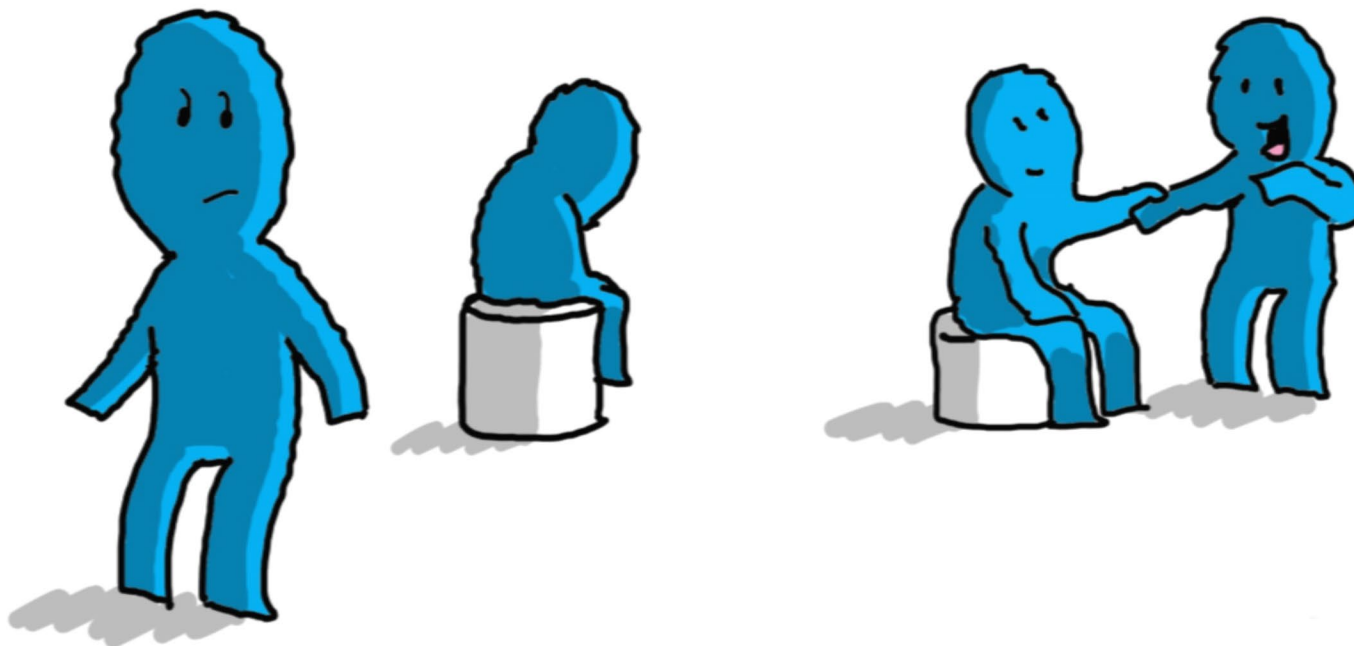


It  
takes a  
school

LeLIEVRE

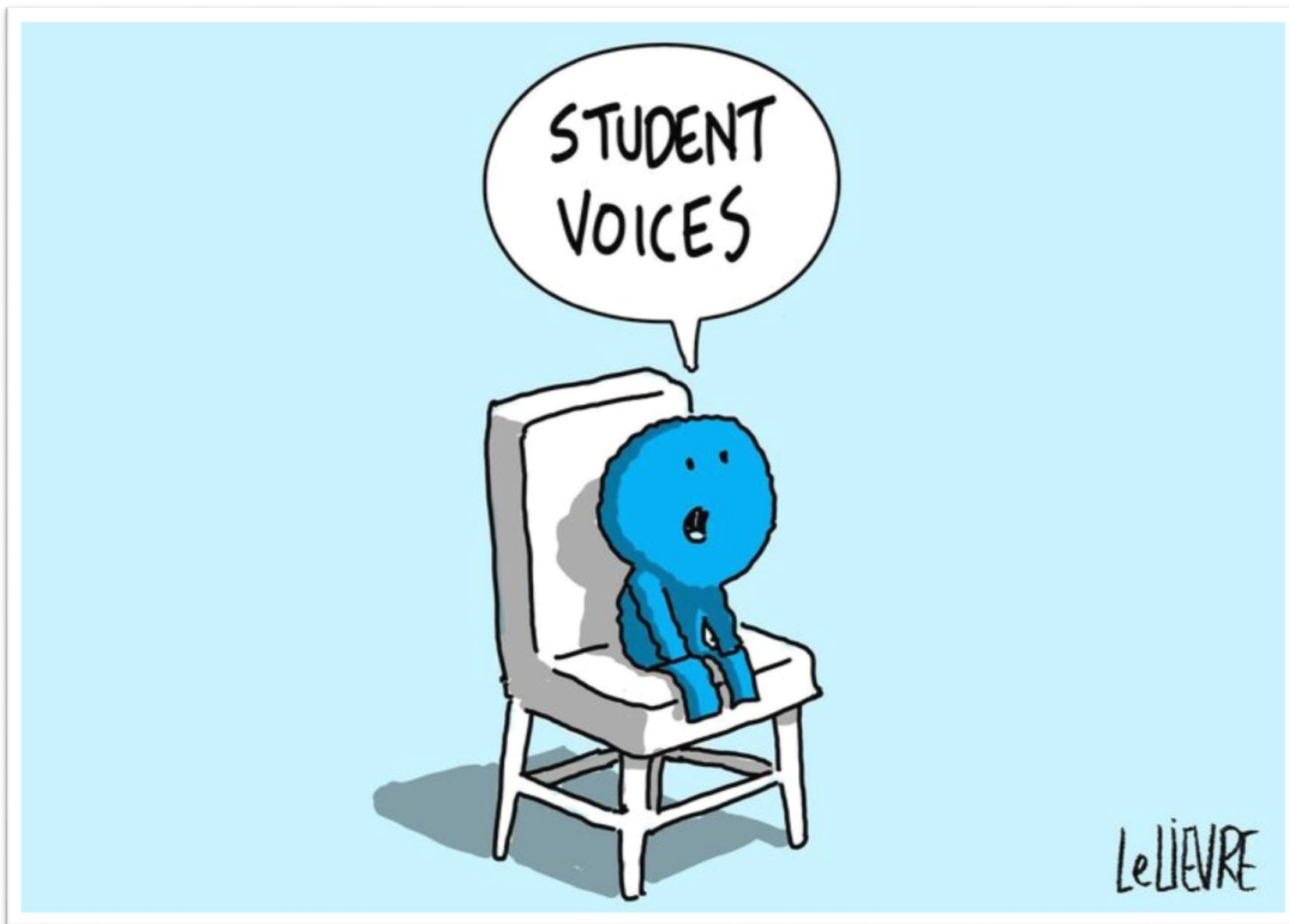
## Bystanders and Upstanders

# Bystanders INTO Upstanders



LeLIEVRE

## Student voices

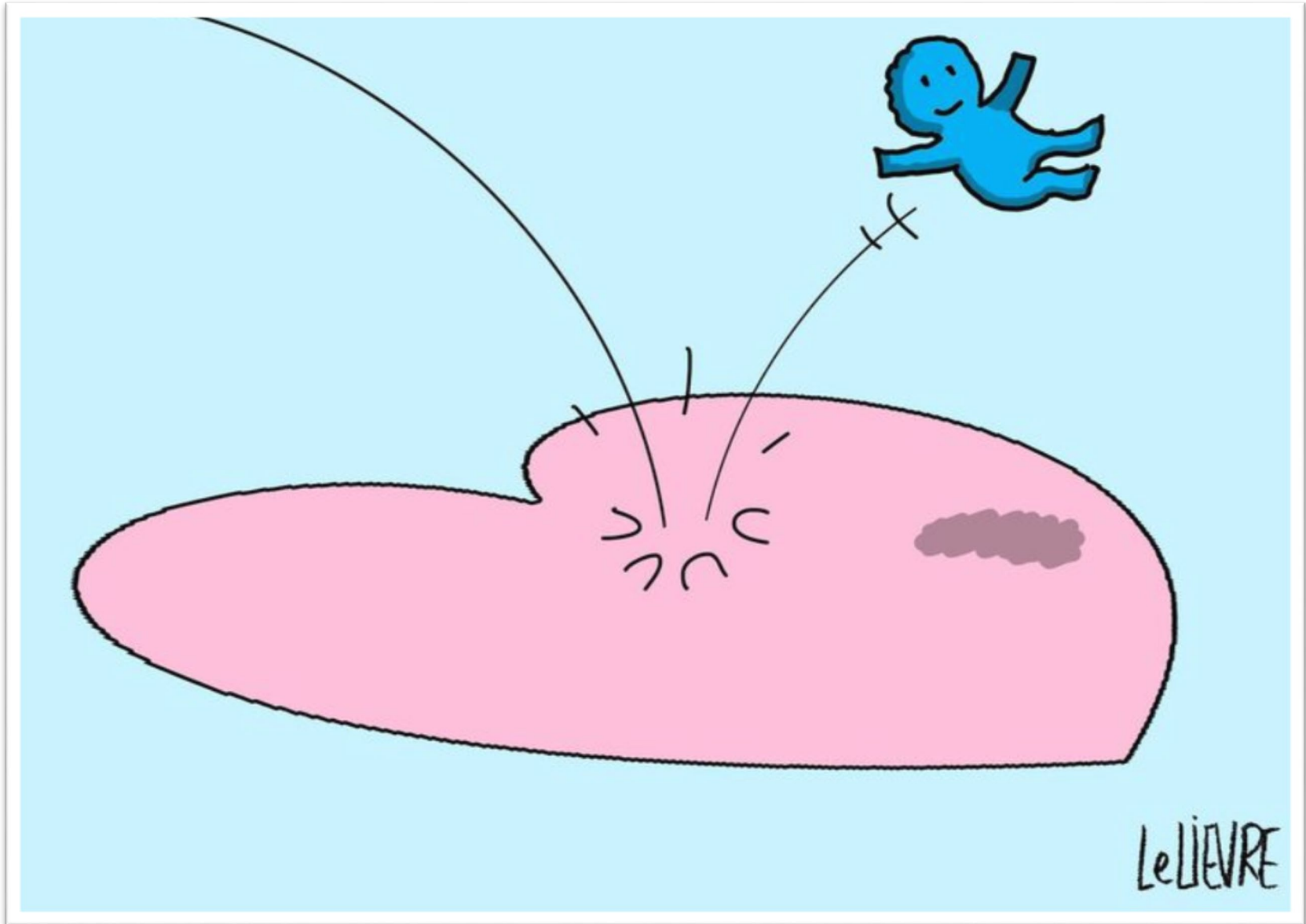




## E-safety



Share the love



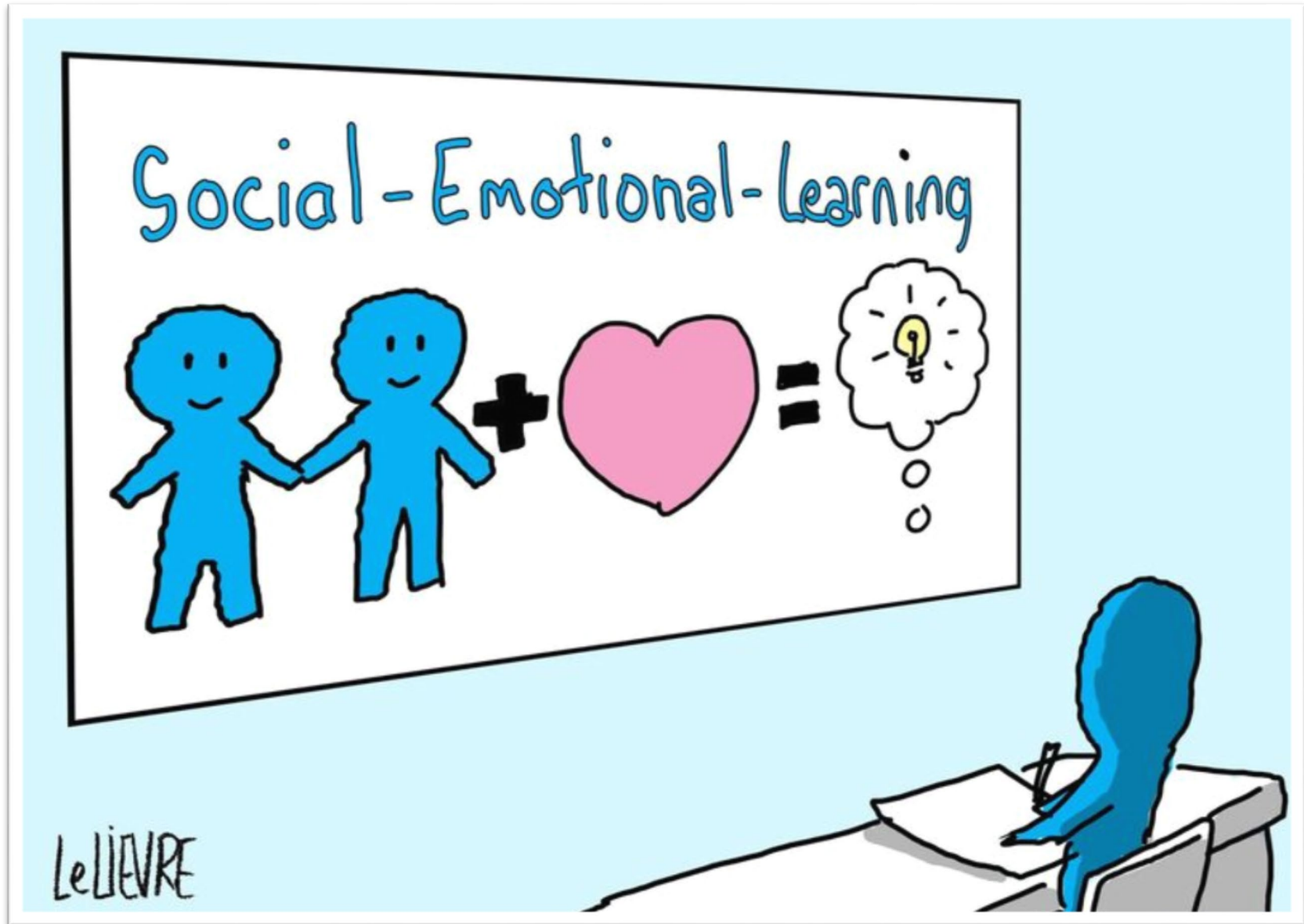
You're wonderful



# Support



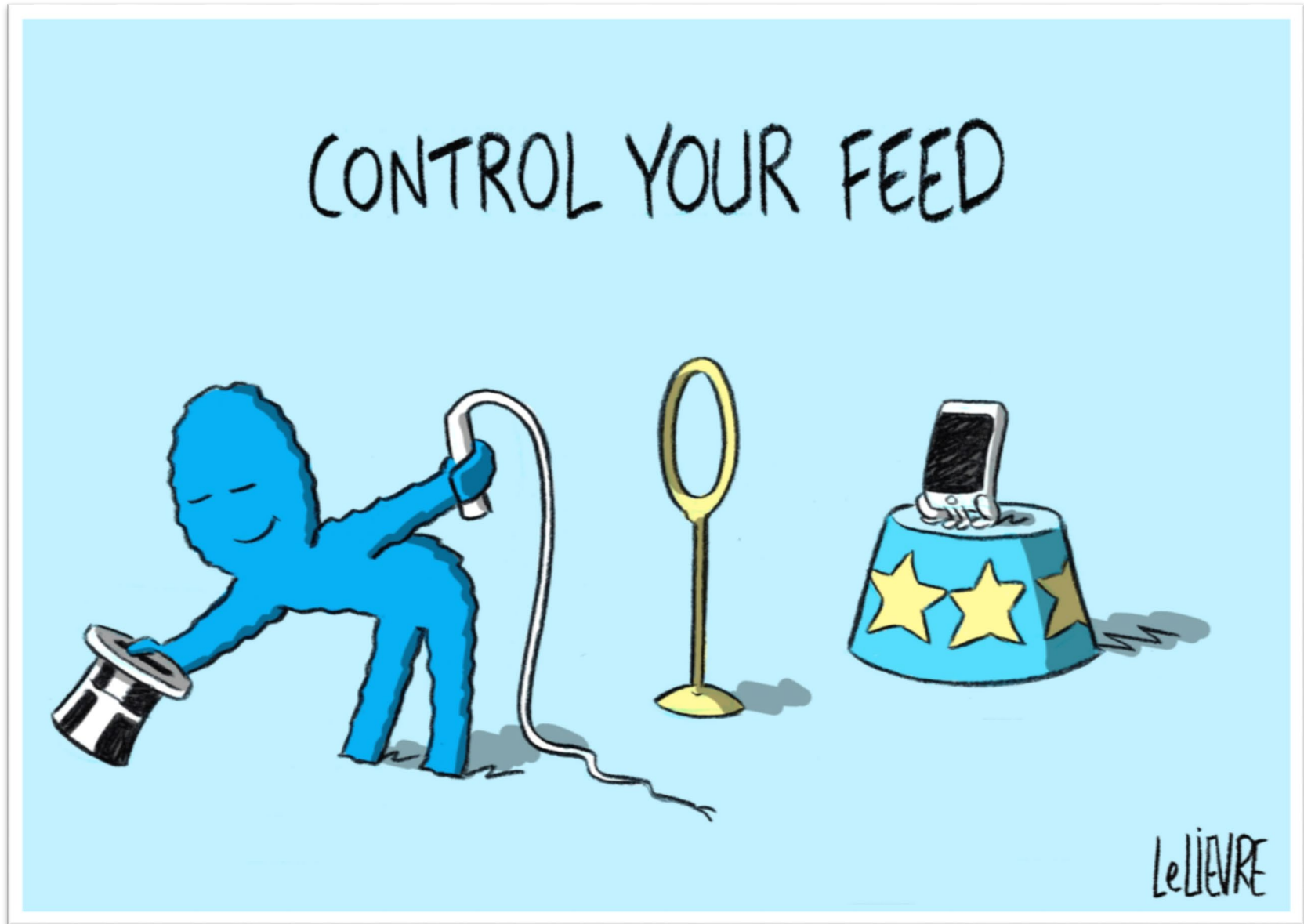
## Social and emotional learning



## Don't feed the trolls

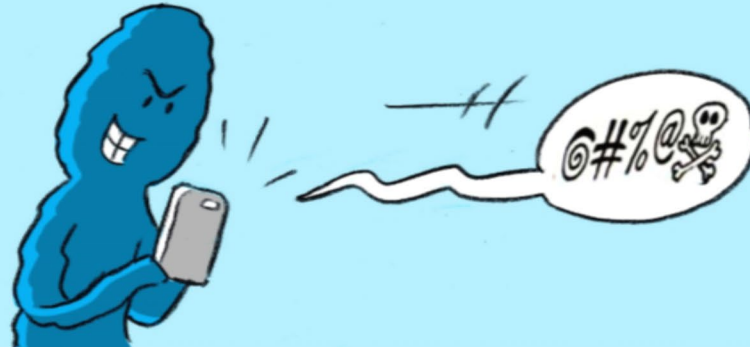


## Control your feed



## Don't repost

LeLIEVRE



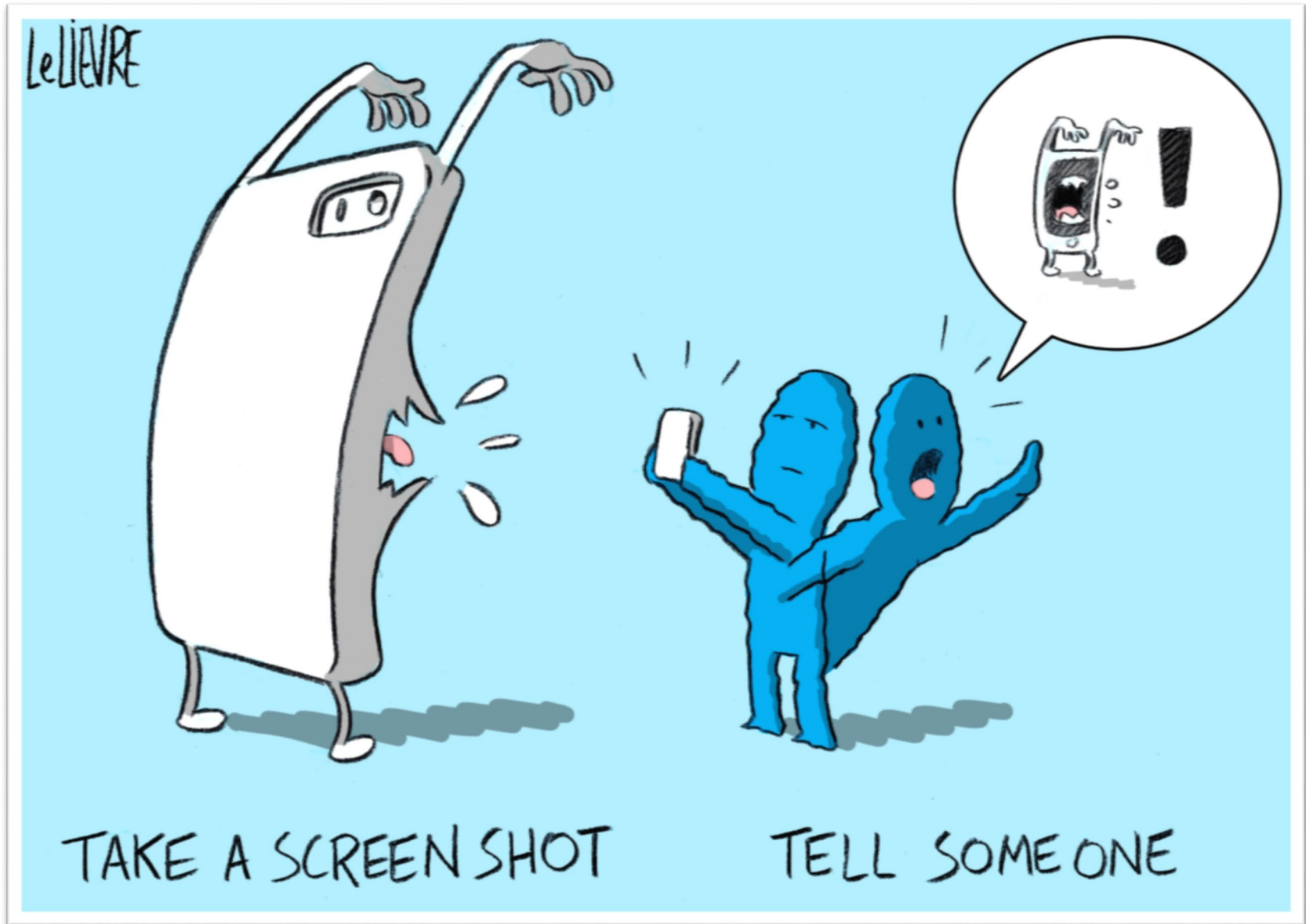
DON'T REPOST



YOU WOULDN'T WANT IT TO HAPPEN TO YOU



Take a screenshot



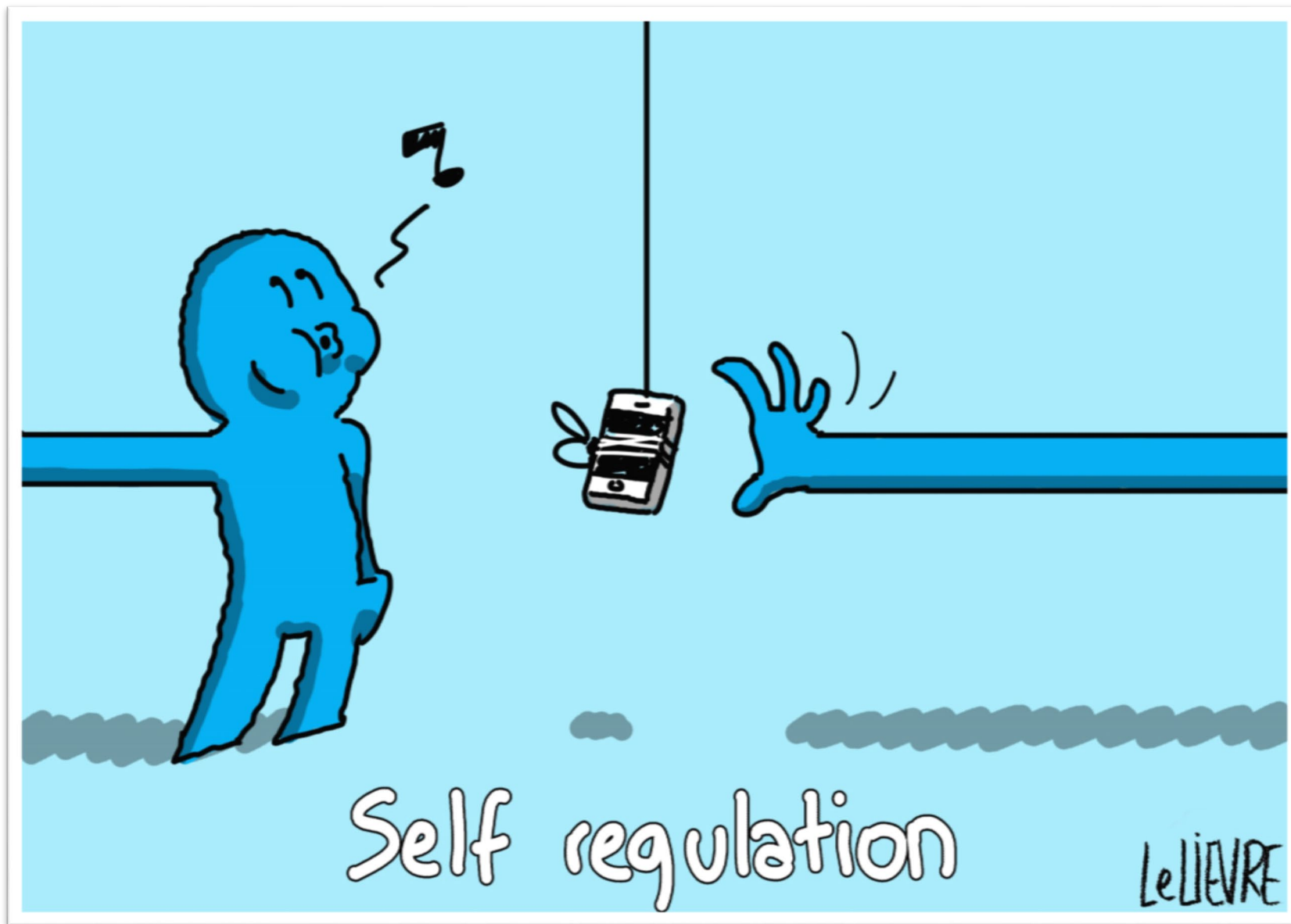
## Importance of showing you care



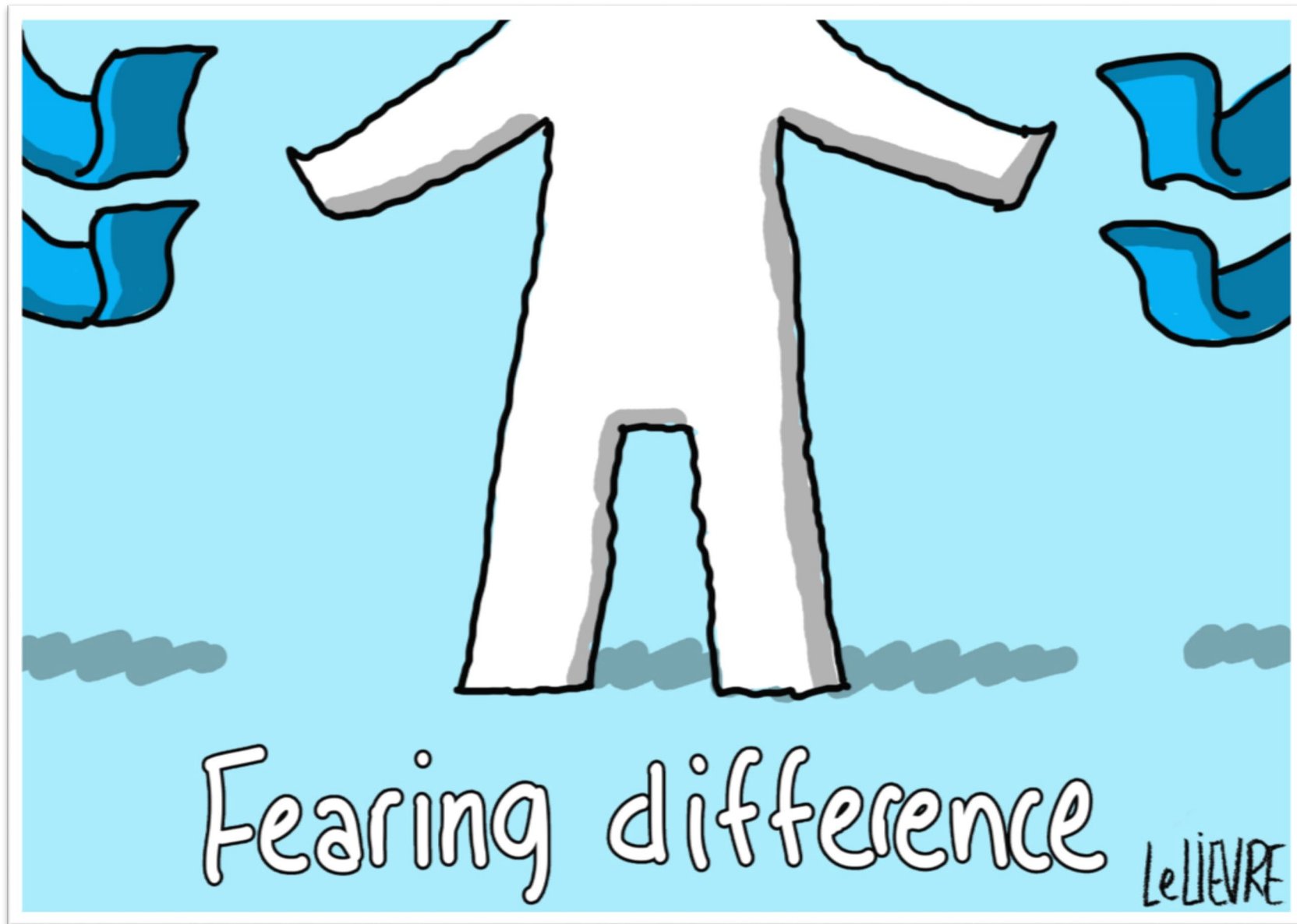
## Identifying and supporting people who may feel vulnerable



## Why it's important to pause before engaging in online chatter



Differences between people are benefits not something to be feared



The value of respect

