

Selective High School Placement Test in 2023 for entry to Year 7 in 2024

Test information for parents and students

The Selective High School Placement Test will be held on **Thursday 4 May 2023 at 9.00am** at the allocated test centre in NSW.

How long does the test take?

The test will run from 9.00am until 1.30pm. The test finish time may vary according to the size of the test centre and its facilities. If the test finishes early, students will be supervised.

There is a short break after the first and third tests and a longer break in the middle of the tests when students can eat the food they bring.

Dropping off and collecting your child

Parents must take students to the entrance to the test centre by 9.00am and return at 1:30 to pick them up. Signs will direct you to the entrance to use.

There is no supervision for students before 8.45am. Please do not be late to collect your child.

Test day is a regular school day for the test school so it is important to avoid disruption to staff and students at the school. If your child is allocated to a test centre that is not at a school, please consider the other users of the building.

Do not park in or near the school grounds and observe any instructions about parking restrictions. Take care not to block access to driveways.

As parents will not be allowed on school grounds you will need to take your child to the designated entrance and a supervisor will meet students there. The only exception is where a parent has prior written authority to attend for medical reasons. Please give anaphylaxis kits or other approved equipment to the Anaphylaxis invigilator at the entrance.

Collect your child from the same entrance after the test. If you arrange for your child to be collected by someone else or to walk to school or home, you must send a note with your child giving permission and accepting responsibility for your child's safety.

What should students wear to the test?

Students should wear school uniform, including a jumper and a hat for the break. Wearing of masks and using hand sanitiser is permitted if you wish your child to do so. The test invigilators will observe any hygiene requirements in place for NSW schools.

What should students take to the test

Students must bring a printed copy of the 'Test authority letter' that shows their application number and their test centre.

Students SHOULD bring	Students SHOULD NOT bring
Two 2B pencils, an eraser and a pencil sharpener	Pencil cases, rulers, note paper or other material such as dictionaries or books.
Glasses, asthma inhaler (and spacer) and tissues if required. Other equipment and medical devices that have been approved for them before the test	Equipment such as calculators, computers, mobile phones, smart watches, watches that calculate or beep, or any device that calculates, photographs, connects or communicates
A substantial snack to eat during the break as lunch will be late, especially if the test is delayed. Water in a clear water bottle	Snacks containing nuts or nut products.

Students may bring a wristwatch that does not make a noise or calculate, connect, communicate or photograph but the test centre clock is the official time-keeper.

If students have been granted an adjustment for the test, they should bring the Reasonable adjustments letter and any items listed in it.

About the test

There are four tests. They will be done in this order:

Test	Duration	Questions
Reading	40 minutes	30 multiple choice
Mathematical Reasoning	40 minutes	35 multiple choice
Thinking Skills	40 minutes	40 multiple choice
Writing	30 minutes	1 question

Students are given a question paper and answer sheet for each test. Answers are shown by shading in circles on the answer sheet next to the question numbers.

Practice tests are available at <https://education.nsw.gov.au/public-schools/selective-high-schools-and-opportunity-classes/year-7/the-test>. Use these to help your child become familiar with the test questions and print off an answer sheet to practice with.

Watch a video about the [Selective High School Placement Test](#).

What if something goes wrong?

If something occurs to prevent your child attending the test or doing his or her best in the test, you can submit a request for consideration of illness or misadventure by **11 May 2023** through your application dashboard at <https://shsoc.education.nsw.gov.au>. You will need to get a medical certificate and independent evidence of illness covering the day if the problem is medical, or other relevant evidence if it is not about illness or injury.

Go to <https://education.nsw.gov.au/public-schools/selective-high-schools-and-opportunity-classes/year-7/the-test/illness-or-misadventure> for more information about submitting an Illness/misadventure request.

Please do not bring your child to the test if he or she is ill with respiratory disease. Invigilators may not admit a student if they consider others in the test centre to be at risk from contagious disease.

If your child arrives late there will be no extra time given.

Tips for students

The test is designed to show your ability so there is no particular material to study before the test. You'll use your knowledge and skills to answer challenging questions.

You can see the types of questions that may be asked, and the explanation of answers, in the practice tests at <https://education.nsw.gov.au/public-schools/selective-high-schools-and-opportunity-classes/year-7/the-test>. Practise answering the questions using an answer sheet.

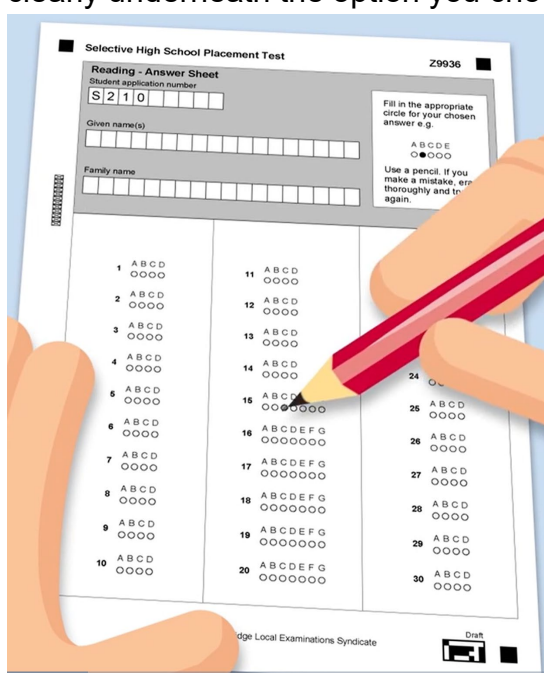
On test day

- Go to the toilet before you leave home.
- You will be met at the school entrance by an invigilator – a person who runs the test – who will show you where to go to line up to enter the test room.
- Pay attention and follow all instructions from the invigilators at all times.
- Don't talk to other students once you enter the test room.

- In the test room you will sit at the desk which has a sheet showing your name and other personal details. You will sign your name on this sheet.
- There will be a short rest break after the first and third tests and a longer break after the second test, when you will go outside and eat food you have brought.

During the test

- Listen carefully to instructions.
- Copy your application number and name carefully onto all of your test papers.
- Read each test question carefully before you start answering it. Think about what it asks you to do. Choose the answer that you think is best.
- Answer questions on the answer sheet by using the pencil to shade in the circle clearly underneath the option you choose.



- If you change your mind about the answer, rub it out thoroughly and show your new answer clearly.
- Keep checking that the number of the question you are working on in the question booklet is the same as the number you are shading on the answer sheet.
- If you find you are answering a question at the wrong place, go back one by one to correct them but do not rub out more than one answer at a time. You may wish to carry on answering and come back later to correct your answers.
- Put your hand up if you have a problem or a question or if you need to go to the toilet.

Make sure you show your answers on the answer sheet. Answers recorded in the question paper cannot be marked. Answer in the question booklet only if you have been given permission to do so and if so, you will have separate instructions.

Marks are not taken off for wrong answers. Incorrect, double or blank answers score zero. It is better to have your best guess rather than leave an answer blank as this helps you make sure you are answering on the correct line.

If you want to work anything out in the multiple-choice tests you can write on the question paper or on the back of the sheet with your personal details on it. For the writing test there is a page for planning in the question booklet that you can use if you wish. Any notes that you have made in the question paper or on the writing planning page or personal details sheet will not be marked.

In the writing test you must write only about the question you are given. The question will ask you to write for a particular purpose and audience. Markers will pay attention to creative ideas, the structure of the writing, spelling, grammar and punctuation as well as how well it suits the purpose and audience.

Test conditions

If suspected of cheating you risk having the test marks not counted. Please make sure you:

- do not open the question paper until the invigilator tells you to do so
- do not look at the work of others during the test
- cover your answer sheet as you work to make sure nobody can copy your answers
- do not talk to other students while in the test room
- do not keep writing after you are told to stop.

Timing

Use your time wisely. Work steadily. If you find a question too difficult, do not spend a very long time on it. Shade in the answer you think is best and come back to that question later if you have time.

There will be no time warnings during the test. You will need to check the test centre's official clock to find out how much time you have left. Put your hand up if you cannot see it clearly.

A final tip

Get a good night's sleep the night before the test and try to keep calm. It's normal to feel nervous about a test. If you can relax, you will have a better chance to think clearly and do your best.