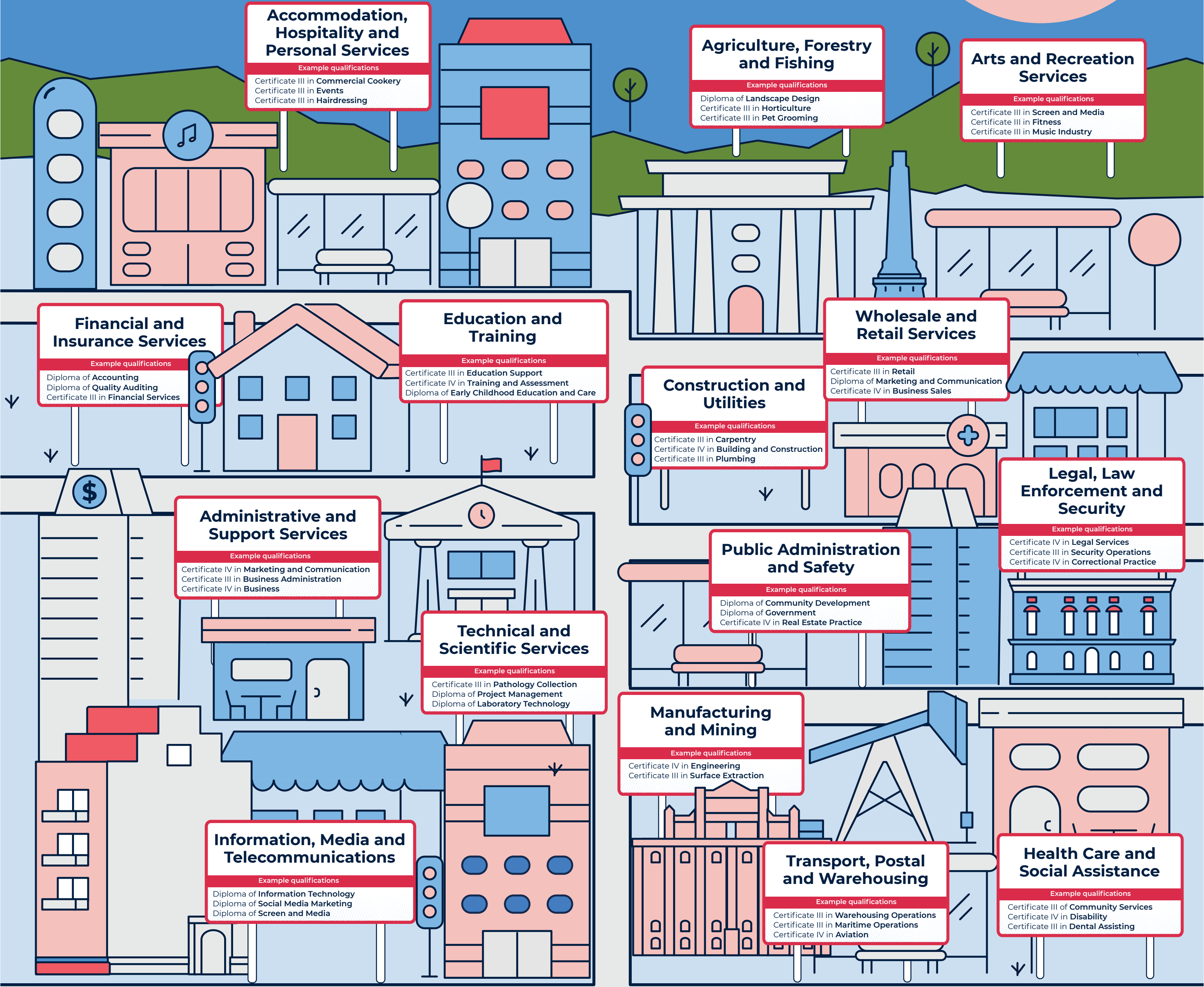


# Career pathways

You can take many different paths to find a fulfilling career. One road is vocational education and training (VET). Get hands-on experience in the industry you're passionate about, while you study. Explore more industries, careers and courses at [skills.education.nsw.gov.au](https://skills.education.nsw.gov.au).



## Match subjects to careers

Find out where the subjects you enjoy doing could take you. Check out these NSW HSC subjects and see some examples of jobs and careers they are linked to. You'll be surprised how many options there are.

 <b>Art</b> Nail Technician Jeweller Interior Decorator New Media Artist	 <b>Biology</b> Dental Assistant Nursery Worker Cardiac Technologist Cattle and Wheat Farmer	 <b>Chemistry</b> Industrial Spraypainter Veterinary Nurse Medical Laboratory Tech Environmental Scientist	 <b>Economics</b> Bookkeeper Stock and Station Agent Insurance Broker Corporate General Manager	 <b>English</b> Library Assistant Civil Celebrant Customer Service Manager Director (Film, TV, Stage)
 <b>Geography</b> Tour Guide Defence Force Member Earth Science Technician Geologist Environmental Scientist	 <b>TAS</b> Printer's Assistant Costume Maker Architectural Draftsperson Visual Arts Professional	 <b>Languages</b> Tourist Information Officer Immigration Officer Hotel Manager Defence Intelligence Analyst	 <b>Maths</b> Bank Worker Aircraft Maintenance Engineer Fleet Manager Economist	 <b>Physics</b> Chemical Production Machine Operator Electrician Safety Inspector Meteorologist

# School Planner 2022



Term one	Week	Monday	Tuesday	Wednesday	Thursday	Friday	Saturday / Sunday
January	1	24	25	26 Jan – Australia Day	27	28	29/30
January / February	2	31	1	2	3	4	5/6
February	3	7	8	9	10	11	12/13
February	4	14	15	16	17	18	19/20
February	5	21	22	23	24	25	26/27
February / March	6	28	1	2	3	4	5/6
March	7	7	8	9	10	11	12/13
March	8	14	15	16	17	18	19/20
March	9	21	22	23	24	25	26/27
March / April	10	28	29	30	31	1	2/3
April	11	4	5	6	7	8	9/10

Term two	Week	Monday	Tuesday	Wednesday	Thursday	Friday	Saturday / Sunday
April / May	1	25 April – ANZAC Day	26	27	28	29	30/1
May	2	2	3	4	5	6	7/8
May	3	9	10	11	12	13	14/15
May	4	16	17	18	19	20	21/22
May	5	23	24	25	26	27	28/29
May / June	6	30	31	1	2	3	4/5
June	7	6	7	8	9	10	11/12
June	8	13 June – Queen's Birthday	14	15	16	17	18/19
June	9	20	21	22	23	24	25/26
June / July	10	27	28	29	30	1	2/3

Term three	Week	Monday	Tuesday	Wednesday	Thursday	Friday	Saturday / Sunday
July	1	18	19	20	21	22	23/24
July	2	25	26	27	28	29	30/31
August	3	1	2	3	4	5	6/7
August	4	8	9	10	11	12	13/14
August	5	15	16	17	18	19	20/21
August	6	22	23	24	25	26	27/28
August / September	7	29	30	31	1	2	3/4
September	8	5	6	7	8	9	10/11
September	9	12	13	14	15	16	17/18
September	10	19	20	21	22	23	24/25

Term four	Week	Monday	Tuesday	Wednesday	Thursday	Friday	Saturday / Sunday
October	1	10	11	12	13	14	15/16
October	2	17	18	19	20	21	22/23
October	3	24	25	26	27	28	29/30
October / November	4	31	1	2	3	4	5/6
November	5	7	8	9	10	11	12/13
November	6	14	15	16	17	18	19/20
November	7	21	22	23	24	25	26/27
November / December	8	28	29	30	1	2	3/4
December	9	5	6	7	8	9	10/11
December	10	12	13	14	15	16	17/18
December	11	19	20	21	22	23	24/25



## Scan me for practical school tips!

To help your child get the most out of their school year and to explore our resources, check out our back to school hub at [education.nsw.gov.au/back-to-school](https://education.nsw.gov.au/back-to-school).