

NSW AECG INC AND NSW DEPARTMENT OF EDUCATION PARTNERSHIP AGREEMENT



VISIT: EDUCATION.NSW.GOV.AU/TEACHING-AND-LEARNING/AEC
AECG.NSW.EDU.AU/ABOUT/PARTNERSHIP-AGREEMENT/

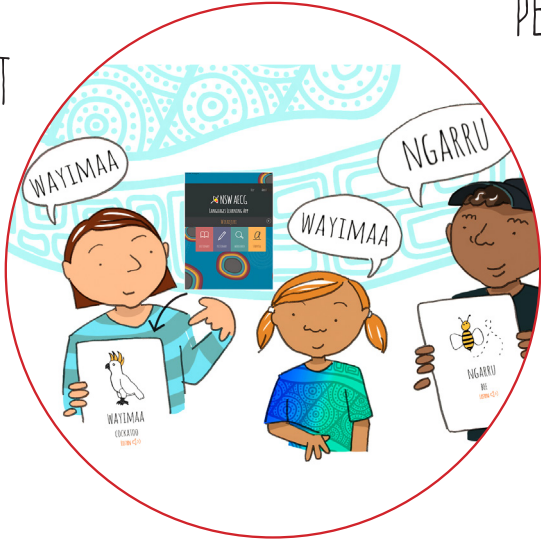


New South Wales
Aboriginal Education
Consultative Group Inc.



NSW AECG INC AND NSW DEPARTMENT OF EDUCATION PARTNERSHIP AGREEMENT

SCHOOLS WILL RESPECT
THE IDENTITY,
CULTURE, HERITAGE
AND LANGUAGES OF
ABORIGINAL STUDENTS
AND BE WELCOMING
AND RESPECTFUL PLACES



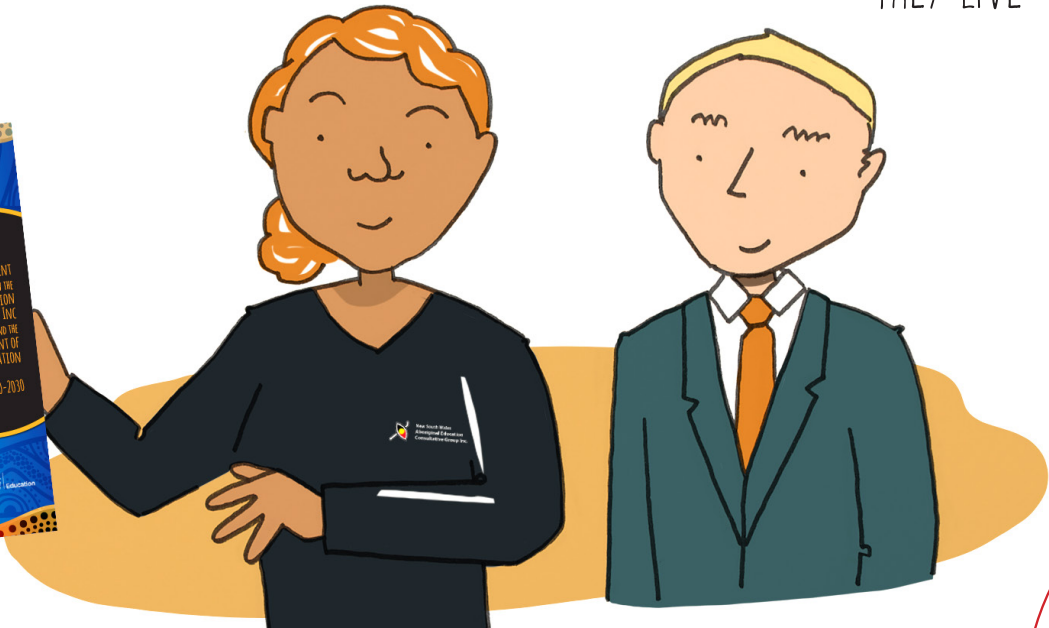
NSW AECG AND THE DEPARTMENT
OF EDUCATION WILL WORK
TOGETHER SO EVERY
ABORIGINAL CHILD AND YOUNG
PERSON CAN ACHIEVE THEIR
POTENTIAL THROUGH
EDUCATION



ALL STUDENTS IN
NSW WILL UNDERSTAND
THE TRUE HISTORY
OF THE LANDS ON WHICH
THEY LIVE



ABORIGINAL PARENTS,
CAREGIVERS, COMMUNITIES,
STUDENTS AND STAFF ACROSS
NSW HAD THE OPPORTUNITY
TO HAVE THEIR
VOICES HEARD IN THE
DEVELOPMENT OF THIS NEW
PARTNERSHIP AGREEMENT



HIGHLIGHTS THE IMPORTANCE OF CONSULTATION WITH
COMMUNITIES AT THE LOCAL LEVEL, ACKNOWLEDGING THE
AECG'S GRASSROOTS STRUCTURE



WALKING TOGETHER, WORKING TOGETHER



New South Wales
Aboriginal Education
Consultative Group Inc.

