

PUBLIC SCHOOL - SERVICES AMENITIES STORAGE HUB

SAS-PS401

Hub Layouts + Room Data Sheets

GUIDANCE MATERIAL FOR INFORMATION ONLY

DRAFT RELEASE - JULY 2025



SCHOOL INFRASTRUCTURE PATTERN BOOK REVIT MODEL

PUBLIC SCHOOL - SERVICES AMENITIES STORAGE HUB

SAS-PS401

REVIT VERSION

2024

DISCLAIMER – EFSG 2025

THE EDUCATIONAL FACILITIES STANDARDS AND GUIDELINES (EFSG) 2025 FORM PART OF THE CONTRACTUAL REQUIREMENTS FOR THE DESIGN AND DELIVERY OF SCHOOL INFRASTRUCTURE PROJECTS COMMISSIONED BY SCHOOL INFRASTRUCTURE NSW (SINSW). ADHERENCE TO THE EFSG IS MANDATORY AND CONSTITUTES A LEGAL OBLIGATION FOR ALL ENGAGED PARTIES.

EFSG 2025 SETS OUT THE DESIGN INTENT, SPATIAL AND FUNCTIONAL REQUIREMENTS, AND STANDARDISED DESIGN COMPONENTS NECESSARY TO GUIDE THE CONSISTENT, EQUITABLE, AND HIGH-QUALITY DEVELOPMENT OF EDUCATIONAL FACILITIES ACROSS NSW. WHILE COMPREHENSIVE IN SCOPE, THE EFSG IS NOT EXHAUSTIVE. PROJECT TEAMS MUST APPLY PROFESSIONAL JUDGMENT IN ADDRESSING SPECIFIC PROJECT NEEDS, SITE CONDITIONS, AND APPLICABLE STATUTORY AND REGULATORY OBLIGATIONS.

WHILE THE MOST CURRENT VERSION OF THE EFSG IS GENERALLY THE AUTHORITATIVE REFERENCE, THE APPLICABLE VERSION FOR ANY GIVEN PROJECT MAY BE DETERMINED BY THE DATE ON WHICH THE PROJECT'S BUSINESS CASE WAS APPROVED. IT IS THE RESPONSIBILITY OF PROJECT TEAMS TO CONFIRM THE RELEVANT VERSION WITH SINSW AND SEEK CLARIFICATION WHERE UNCERTAINTY EXISTS.

THE EFSG ADOPTS A 'LIVE LEARNING' MODEL, AND UPDATES MAY BE ISSUED THROUGH FUTURE ANNUAL RELEASES TO REFLECT EVOLVING PRIORITIES, SECTOR FEEDBACK, AND LESSONS LEARNED. COMPONENTS SUCH AS THE PATTERN BOOK ARE ITERATIVE TOOLS AND WILL CONTINUE TO BE DEVELOPED OVER TIME.

SINSW ACCEPTS NO LIABILITY FOR ANY LOSS, DAMAGE, OR CLAIM ARISING FROM THE MISAPPLICATION, OUTDATED REFERENCING, OR MISINTERPRETATION OF EFSG CONTENT. USERS MUST ENSURE THEY ARE WORKING FROM THE CORRECT VERSION AND CONFIRM ANY AMBIGUITIES DIRECTLY WITH SINSW.

MODEL & DRAWING NOTES

THE DATA CAPTURED IN THIS DOCUMENT IS UNDER DEVELOPMENT AND REVIEW BY SINSW.

THIS DOCUMENT IS TO BE READ IN CONJUNCTION WITH:

- EFSG PART B – FUNCTIONAL DESIGN BRIEF
- EFSG PART C – DESIGN COMPONENTS AND DATA SHEETS
- EFSG PART D – DESIGN AND TECHNICAL STANDARDS
- NATIONAL CONSTRUCTION CODE (NCC)
- AUSTRALIAN STANDARDS
- NATSPEC

ANY DISCREPANCY IN THE INFORMATION WITHIN THIS DOCUMENT AND/OR ANY OTHER DOCUMENT NEEDS TO BE BROUGHT TO THE ATTENTION OF SINSW.

1. HUB LAYOUTS OF DIFFERENT SIZES ARE FOR FUTURE RELEASE - USE THIS DOCUMENT AND THE ROOM DATA SHEETS TO DEVELOP SMALLER OR LARGER HUB LAYOUTS BASED ON SOAS PROVIDED IN PART B.
2. NOT ALL ROOMS ARE ELEVATED. REFER TO A SAME TYPE ELEVATED ROOM AND RDS FOR FURTHER INFORMATION/GUIDANCE .
3. ALL CLEARANCES (OPERATIONAL AND SAFETY) ARE INDICATIVE ONLY AND COMPLIANCE IS TO BE CONFIRMED. THIS INCLUDES SAFETY ZONES AROUND MACHINES AND SPECIFICATIONS OF CONTRACTED MACHINERY AND SPECIALISED EQUIPMENT. CONTRACTED EQUIPMENT SPECIFICATION IS MANAGED BY THE COMPLIANCE AND ENVIRONMENT TEAM AND THE ESIS - EQUIPMENT SAFETY IN SCHOOLS REGISTER.
4. WALL THICKNESSES ARE INDICATIVE ONLY. STRUCTURAL REQUIREMENTS AND ALL SERVICES INSTALLATIONS IN THE PROPOSED LOCATIONS NEED TO BE COORDINATED.
5. AREAS ARE SHOWN IN TWO WAYS:
 - XX.XM² - REFERS TO THE STANDARD BUILDING GRID (7.5M X 9M) INCLUDING ALL STRUCTURES, SERVICES, BUILD-INS ETC.
 - (XX.XM²) - REFERS TO USABLE AREA TO THE INTERNAL FACE OF WALL BASED ON AN AGNOSTIC ENVELOPE
6. ALL FFE IS UNDER DEVELOPMENT AND PRODUCT IMAGERY IS INDICATIVE ONLY.
7. BLOCK OUT BLINDS ARE REQUIRED TO EXTERNAL WINDOWS & EXTERNAL GLAZED DOORS ON GF AND WHERE ADJACENT TO A WALKWAY.
8. SIGNAGE IS UNDER DEVELOPMENT AND INDICATIVE ONLY. 2 TYPES ARE REQUIRED FOR EACH SPACE: FIXED ROOM IDENTIFICATION SIGN (AMS DOOR SIGN) & VARIABLE ROOM IDENTIFICATION SYSTEM.
9. ALSO REFER TO:
 - AUDIO VISUAL SPECIFICATION AT THE TIME OF TENDER. CAPTURED ON DRAWINGS FOR DESIGN LOCATION INTENT ONLY.
 - HEARING AUGMENTATION STRATEGY. ANY MENTION IN THE ROOM DATA SHEETS IS INDICATIVE ONLY AND SHOULD BE VERIFIED WITH THE PRINCIPAL.
 - GAS PROVISION STRATEGY FOR INTERIM MEASURES.
10. GRAPHIC REPRESENTATION OF EXTERNAL FACADE ELEMENTS, IN BOTH PLAN AND ELEVATION ARE INDICATIVE ONLY AND TO BE RESOLVED BY PROJECT TEAMS.

REV	BY	DATE	DESCRIPTION
P02	SINSW	2025/07/01	ISSUED FOR EFSG 2025r0
P01	NC	2025/05/30	FOR INFORMATION

Hub Layout and Room Data Sheets

Public School

Student Amenities (SAS HUB)

General Information

Description	Each Building Block requires an adjacent module, stacked to the full building height and to accommodate Services, Amenities and Storage as described in the strategy in EFSG 2025 Pattern Book Part C.
Location	Refer to Pattern Book. Amenities and Services modules can be located either centrally or to one side of the building.
Hours of Operation	School hours
Functional Requirements	Student toilets are to be configured with the majority located on Ground.
Critical Relationships	Adjacent teaching spaces.
Occupancy/Capacity/Area	
Design Requirement	
Hub arrangement	
Qualitative Design Objectives	

Services

General Requirements	NOTE: Further co-ordination with Services Consultants is required.
Cooling/Heating	Cooling required
Ventilation	Yes
Water/Drainage	Yes
Sprinklers	Generally not required. For buildings above 4-storeys or in heavily affected bushfire settings, co-ordinate with services consultant.
Smoke Extract	To be co-ordinated with services consultant.
Lighting	Yes
Power	Yes
ICT/Commns/Data	Yes
WIFI/Telephone Access Point	Yes
Hearing Augmentation	Refer to SINSW Hearing Augmentation strategy.
Special Requirements	Access Control/ Door Release/ Fire Alarm - under development

DRAWING NOTES

REV	BY	DATE	DESCRIPTION
P01	NC	2025/05/30	FOR INFORMATION
P02	SINSW	2025/07/01	ISSUED FOR EFSG 2025r0

PROJECT NAME
PATTERN BOOK

DRAWING TITLE
PS401 - SAS - HUB COVER

PROJECT NUMBER
PXXXXXX

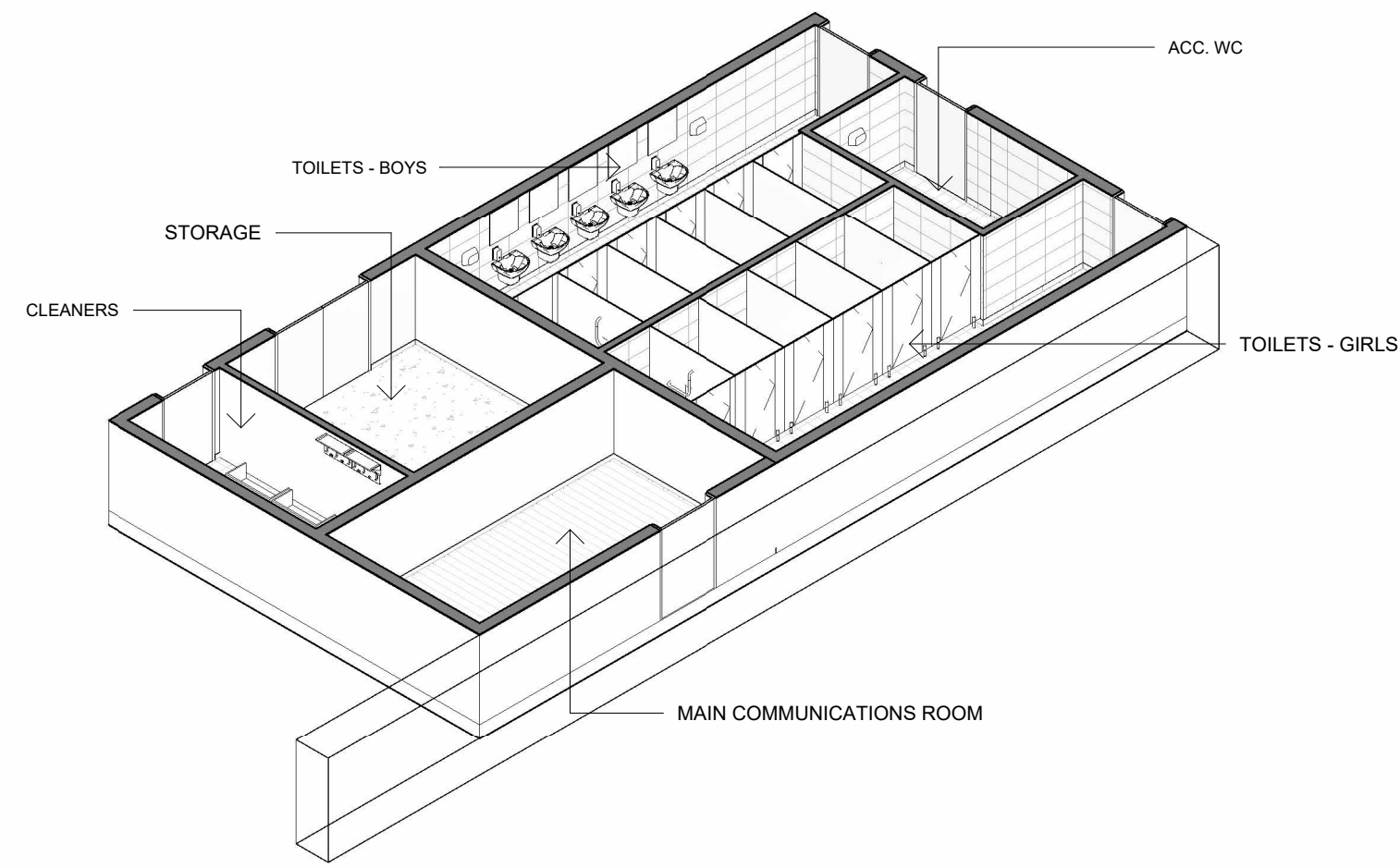
DRW	CHK	APP	DATE 2025/07/01
-----	-----	-----	---------------------------

DRAWING NO.
PAT-SINSW-SAS-PS401- DR-K-0001

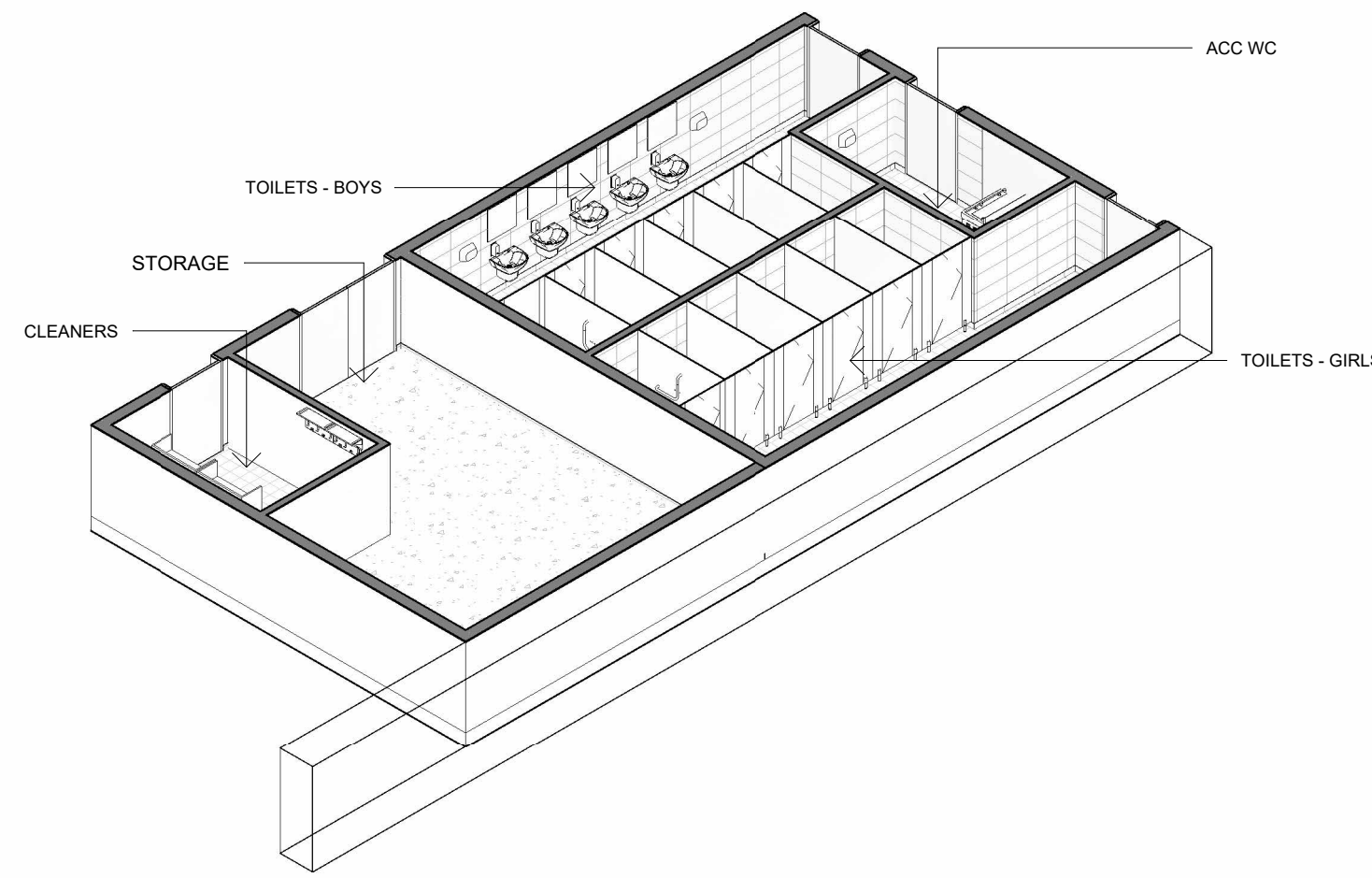
STATUS
FOR INFORMATION

SCALE
@A3

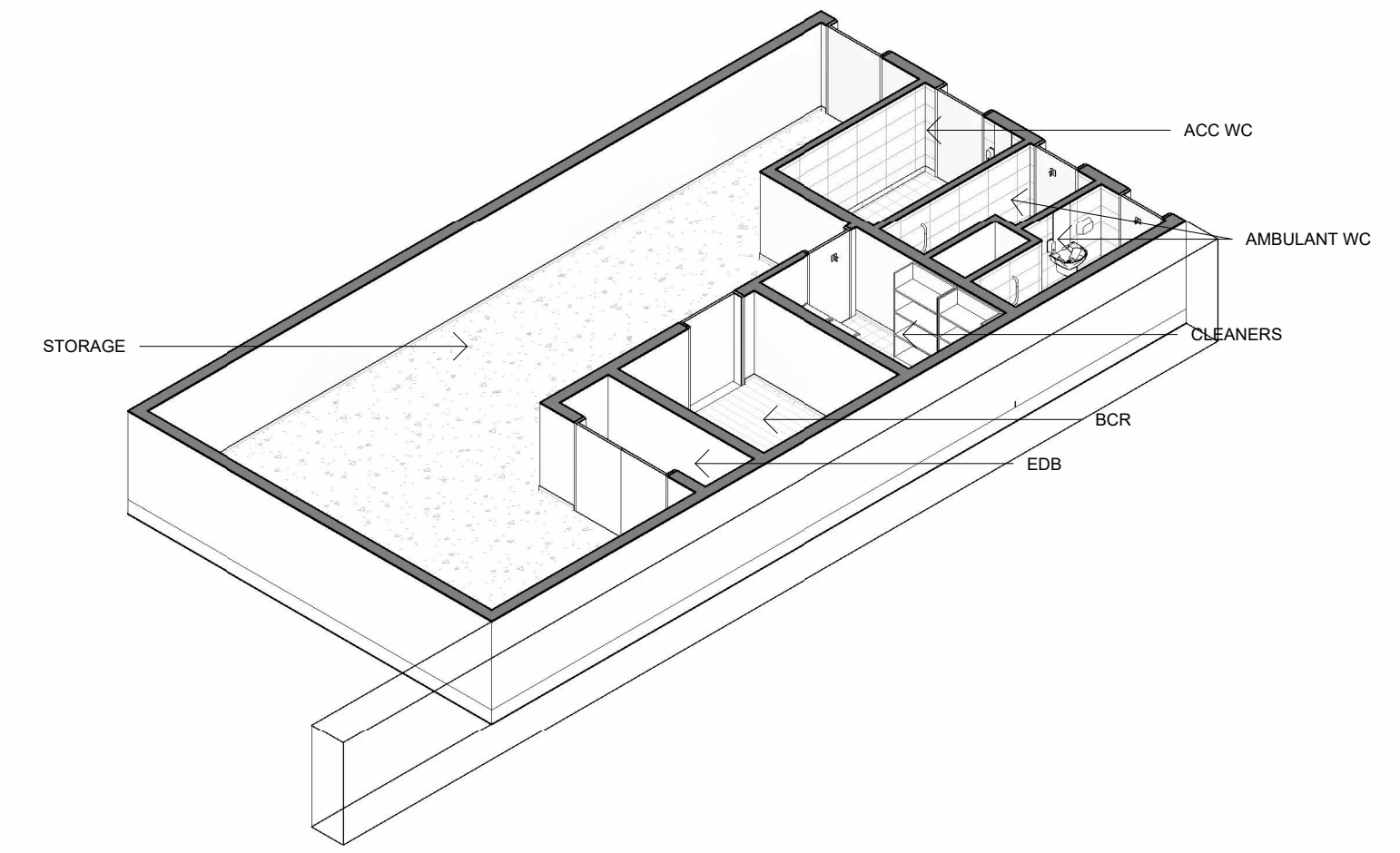
REV
P02



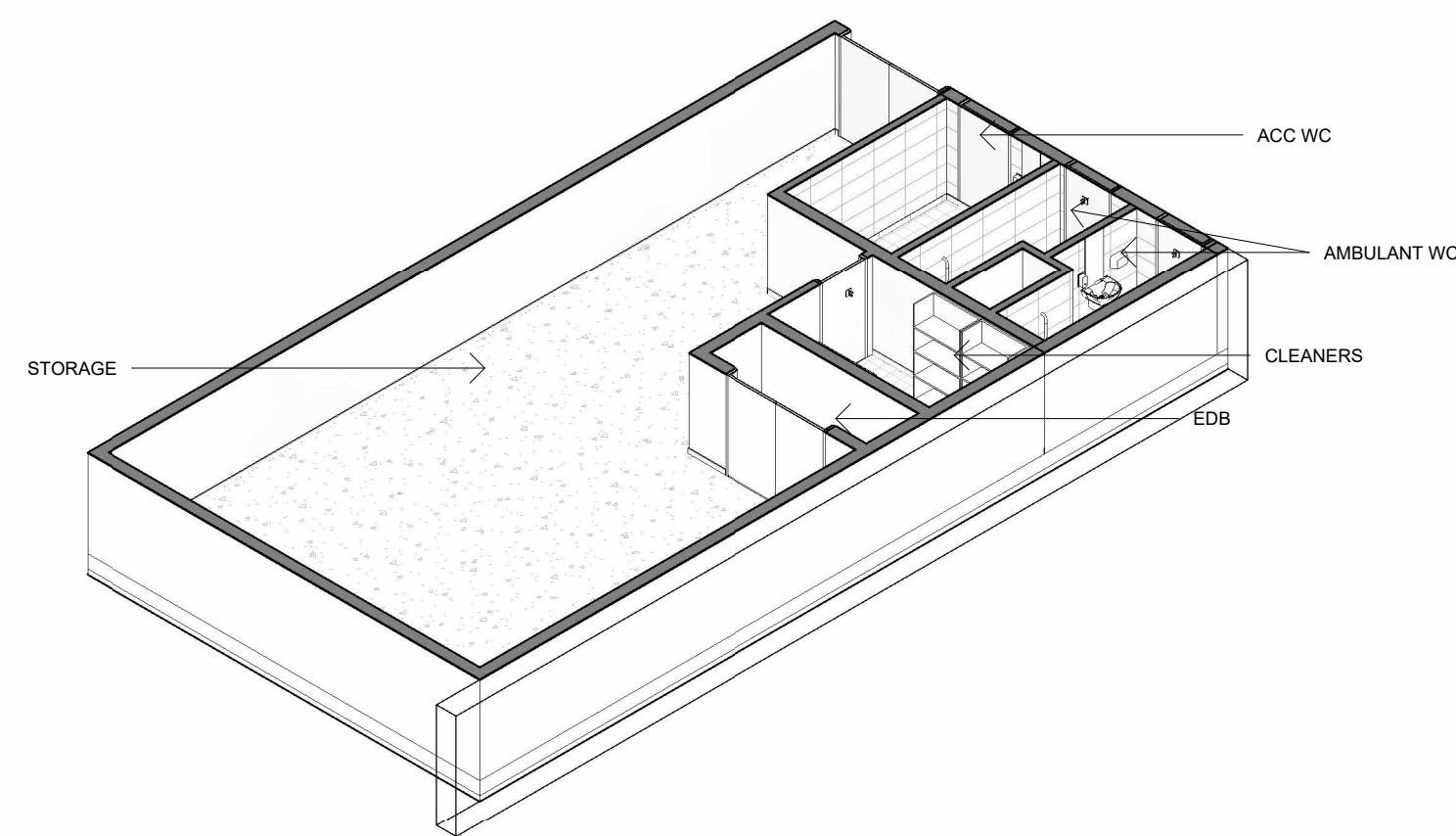
1 PS - SAS - PS GROUND - TYPE 1



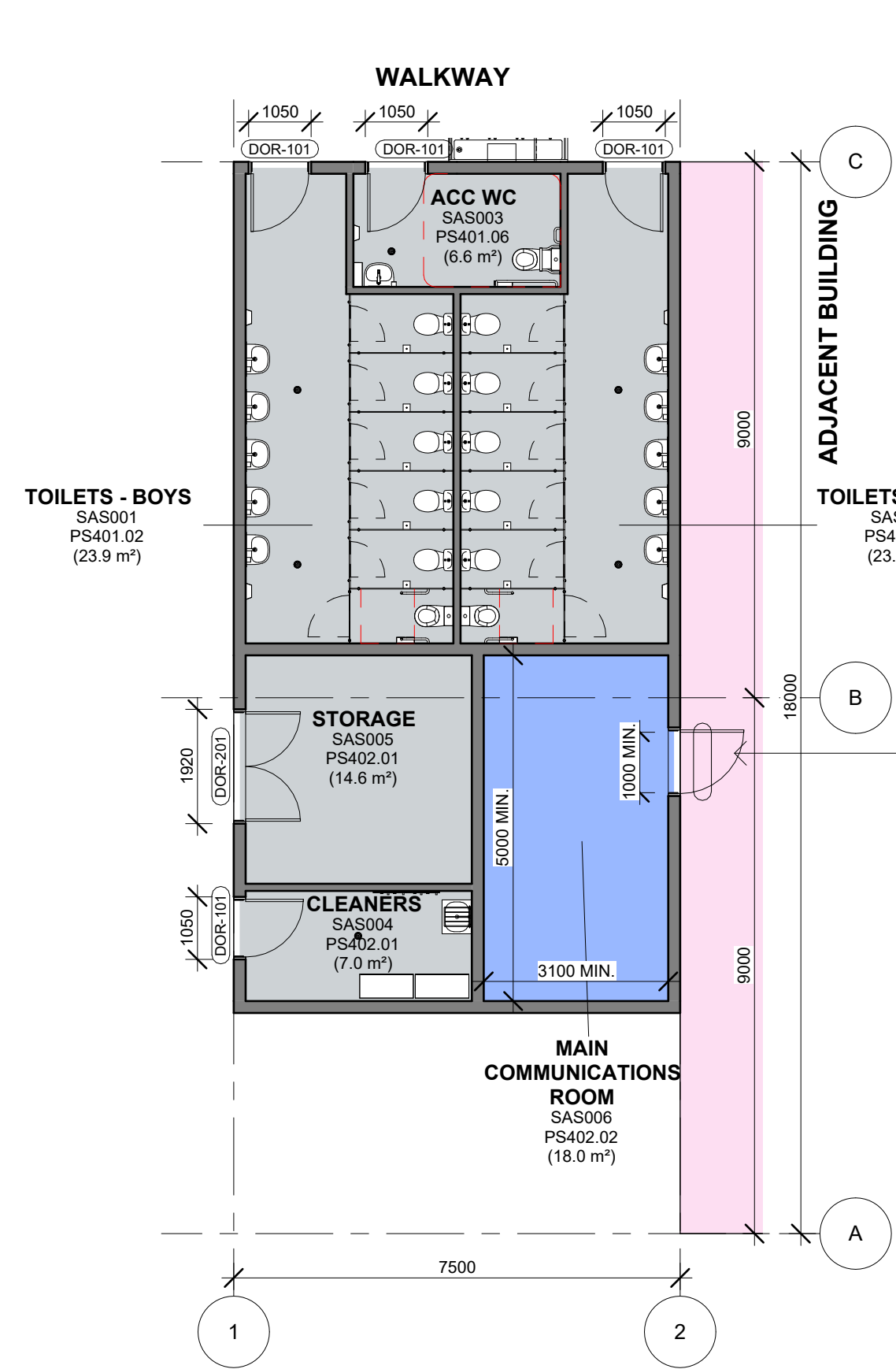
2 PS - SAS - PS GROUND - TYPE 2



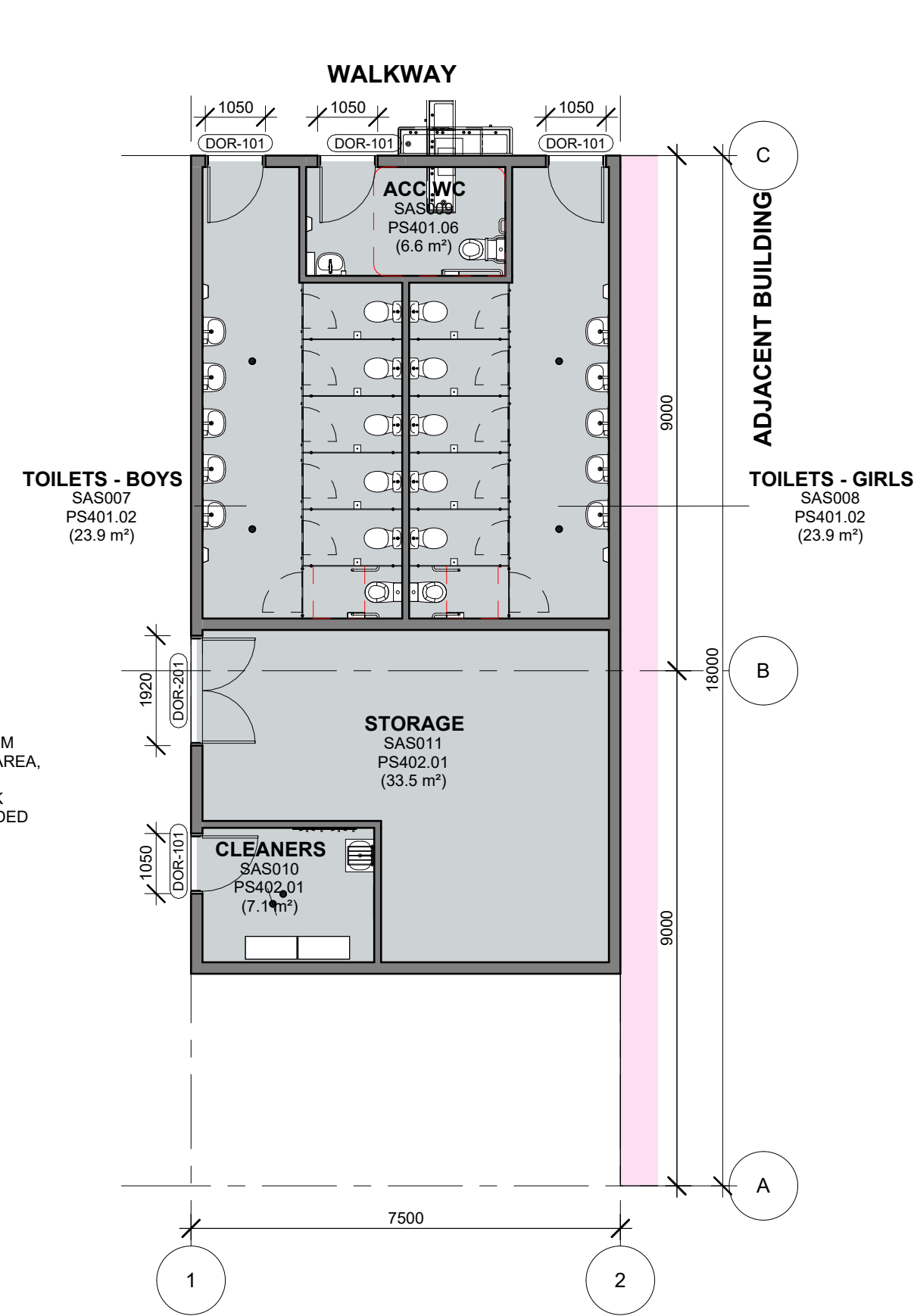
3 PS - SAS - PS TYPICAL MID LEVEL



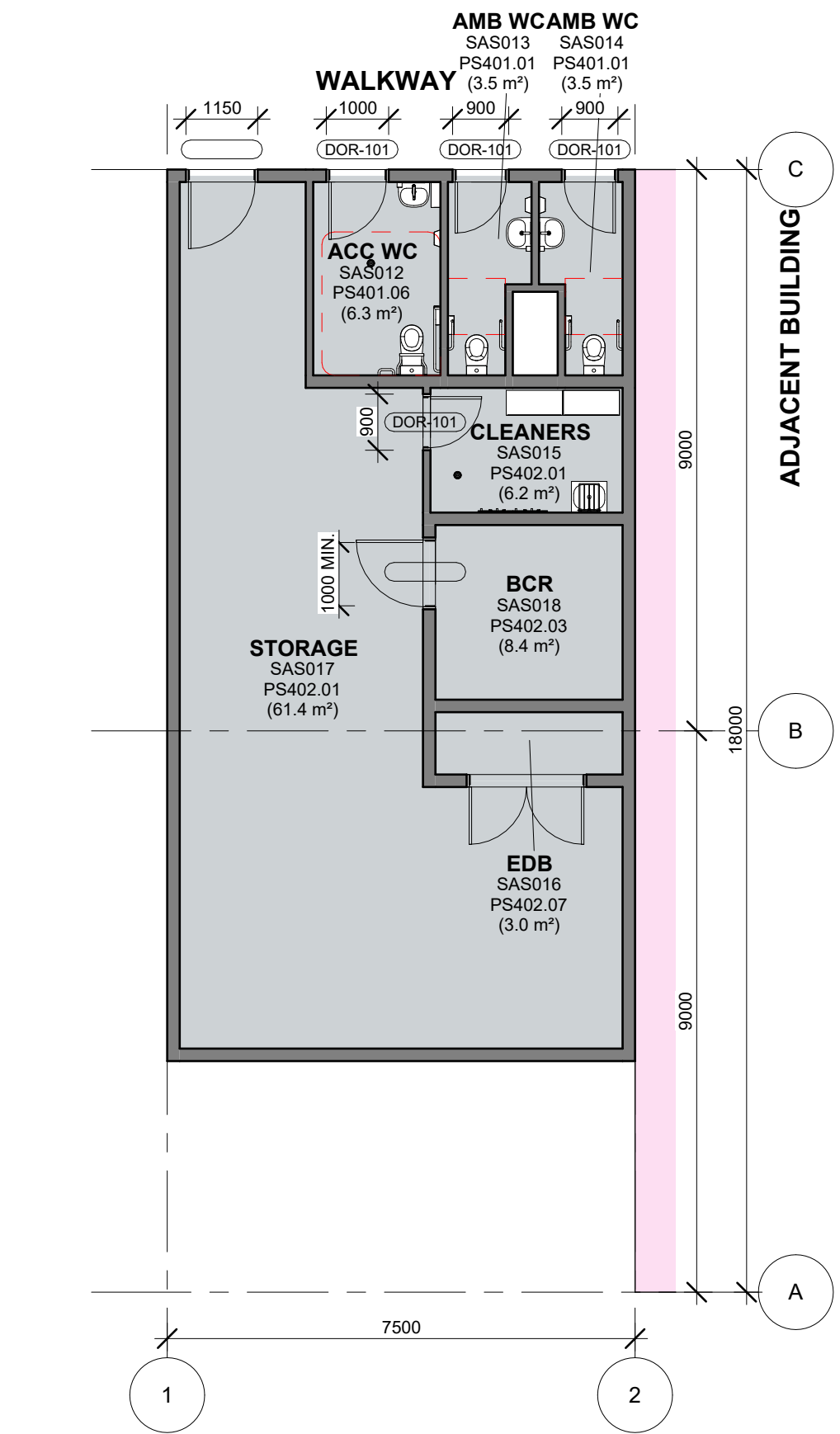
4 PS - SAS - PS TYPICAL UPPER LEVEL



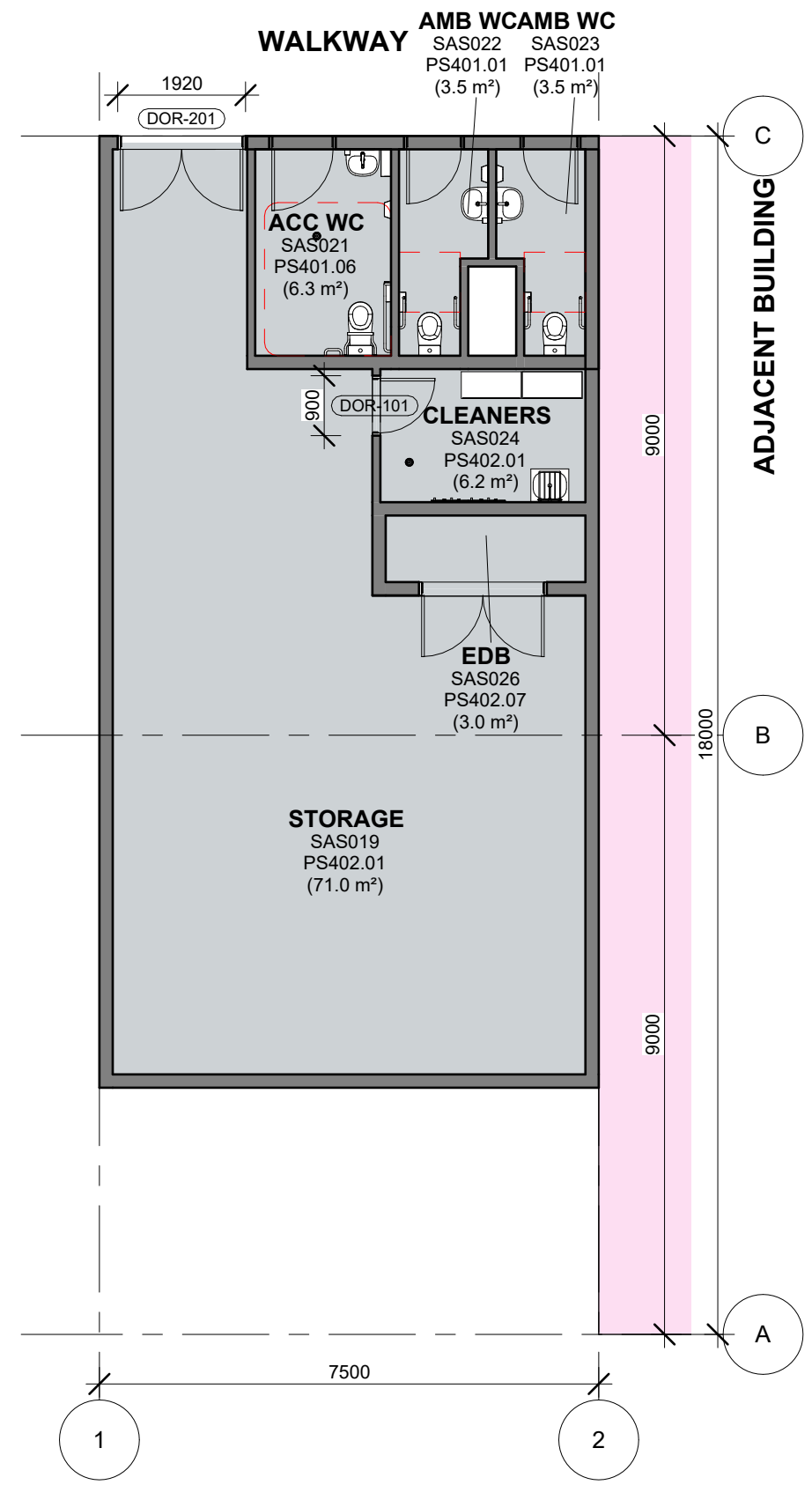
1 PS - SAS - PS GROUND - TYPE 1
1 : 100



2 PS - SAS - PS GROUND - TYPE 2
1 : 100



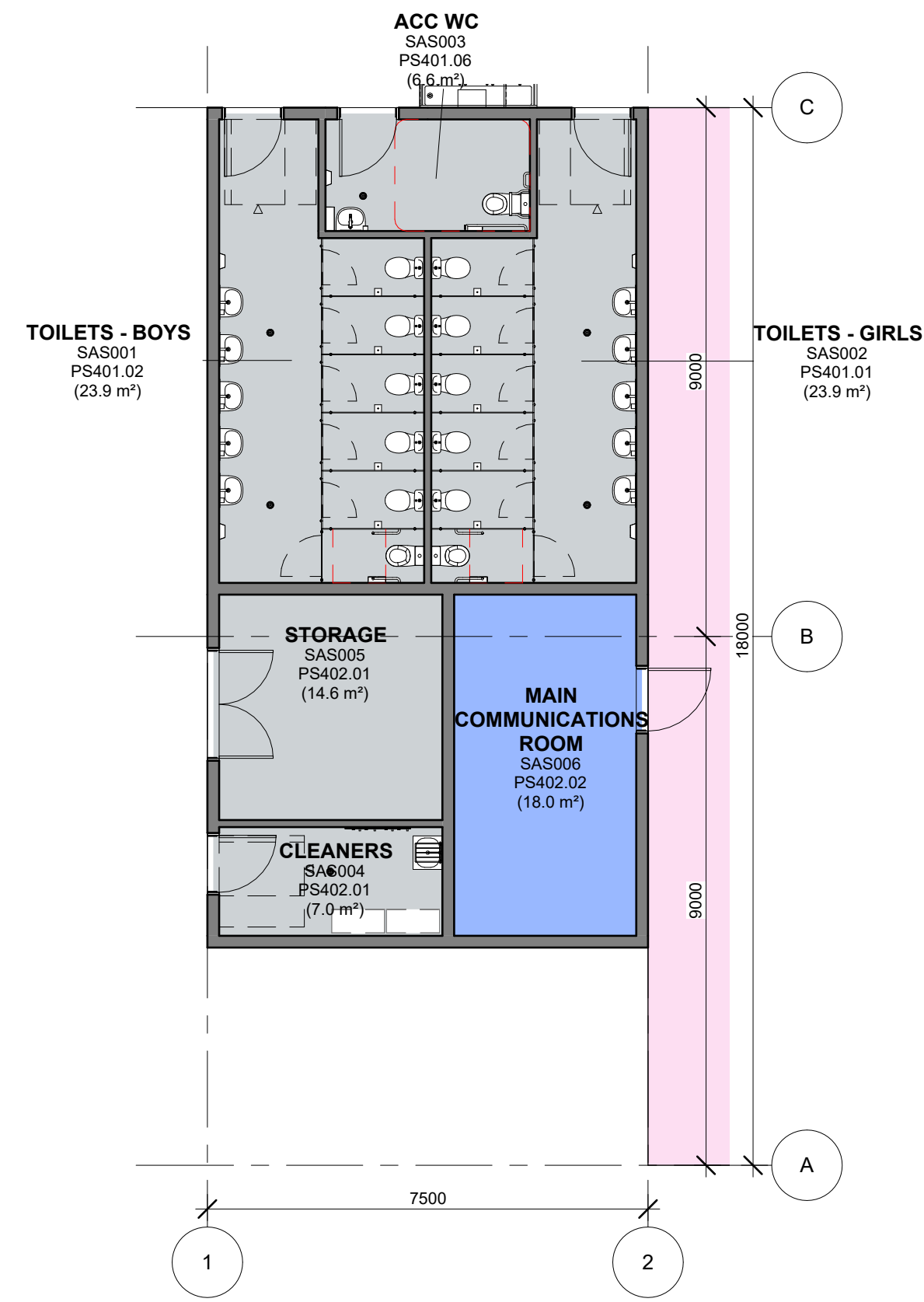
3 PS - SAS - PS TYPICAL MID LEVEL
1 : 100



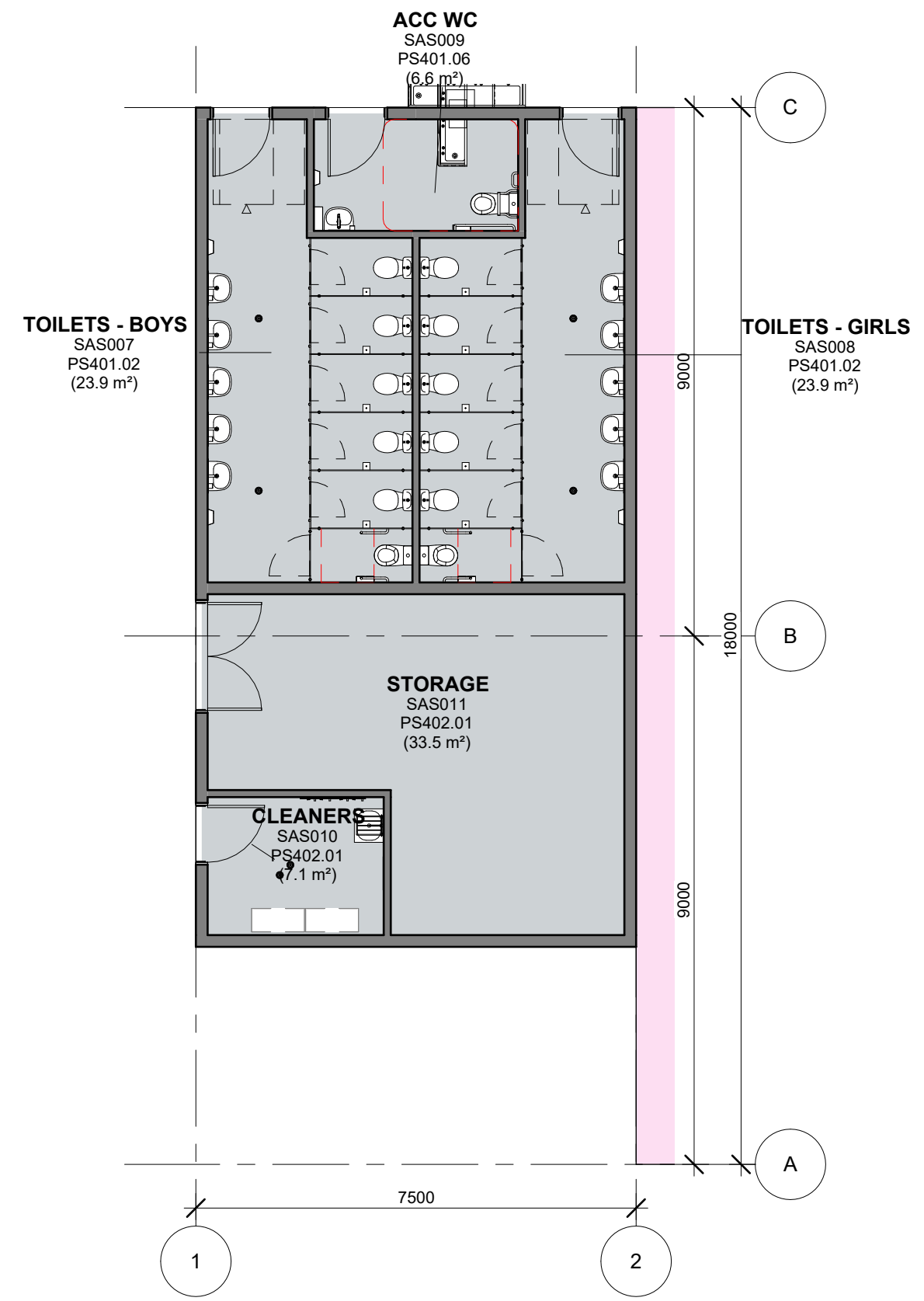
4 PS - SAS - PS TYPICAL UPPER LEVEL
1 : 100

WHERE THERE IS NO DIRECT ACCESS FROM MCR TO A STAFFED AREA, EXTERNAL SECURE ACCESS VIA AIRLOCK NEEDS TO BE PROVIDED

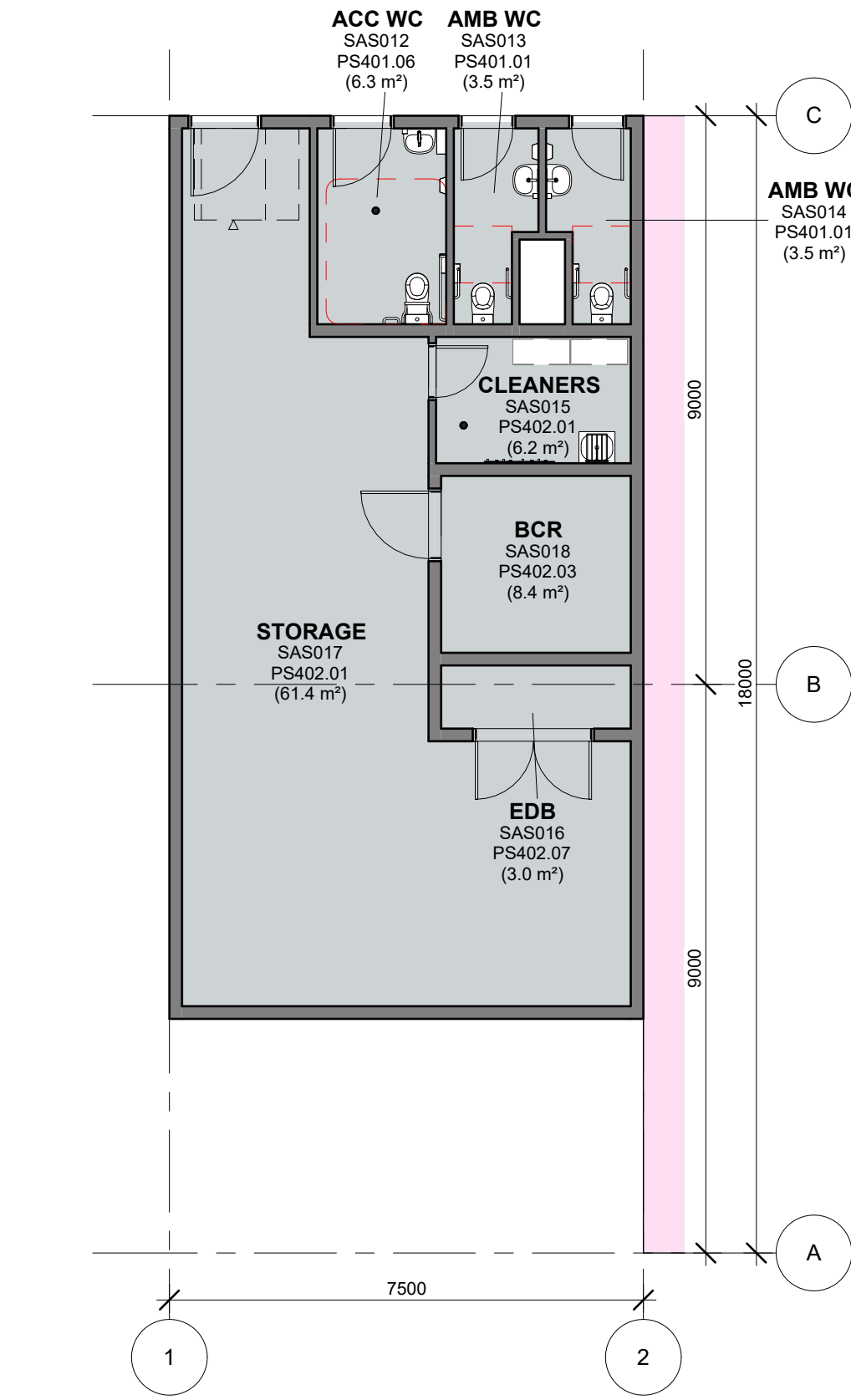




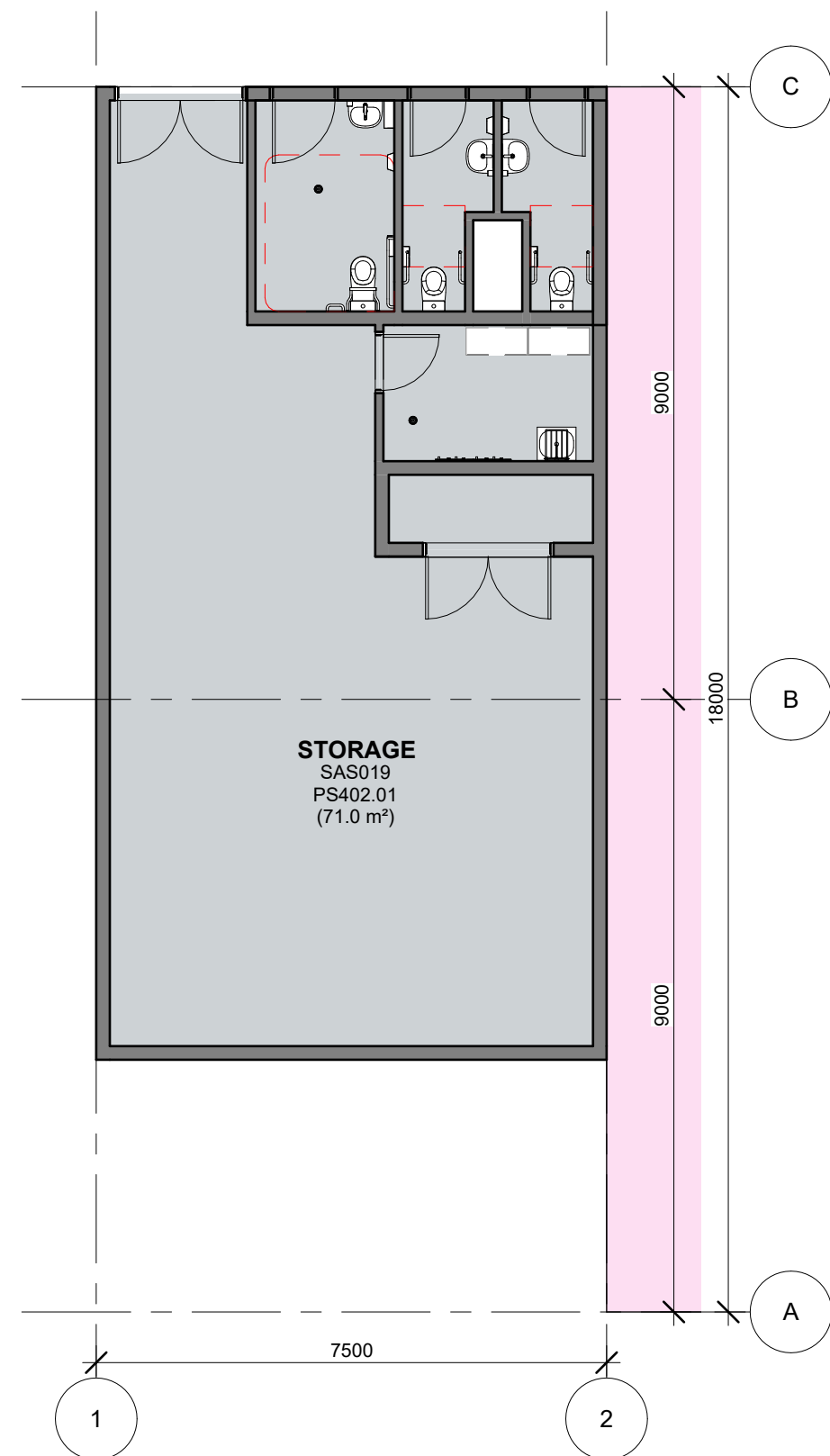
1 PS - SAS - PS GROUND - TYPE 1
1 : 100



2 PS - SAS - PS GROUND - TYPE 2
1 : 100

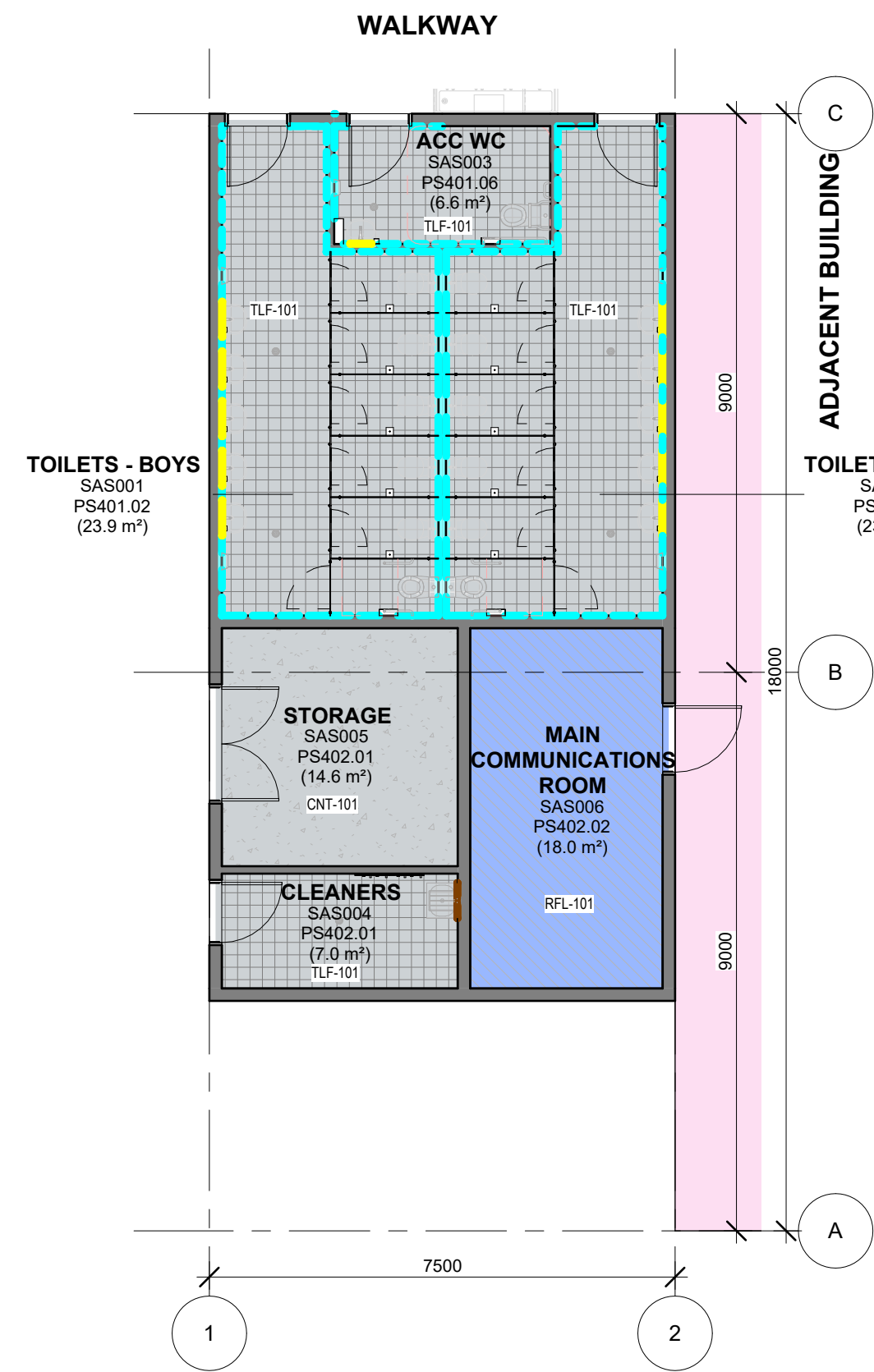


3 PS - SAS - PS TYPICAL MID LEVEL
1 : 100

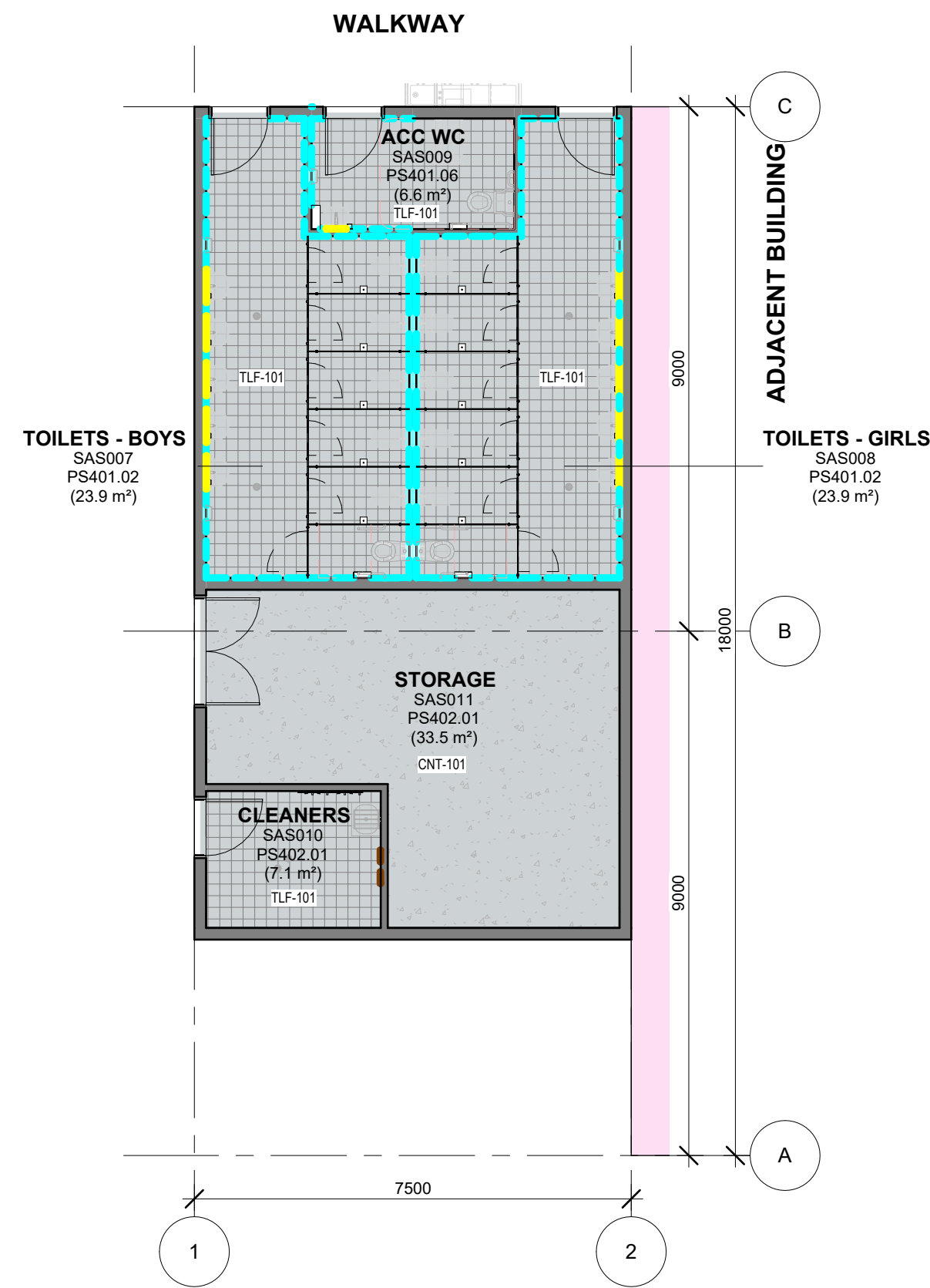


4 PS - SAS - PS TYPICAL UPPER LEVEL
1 : 100

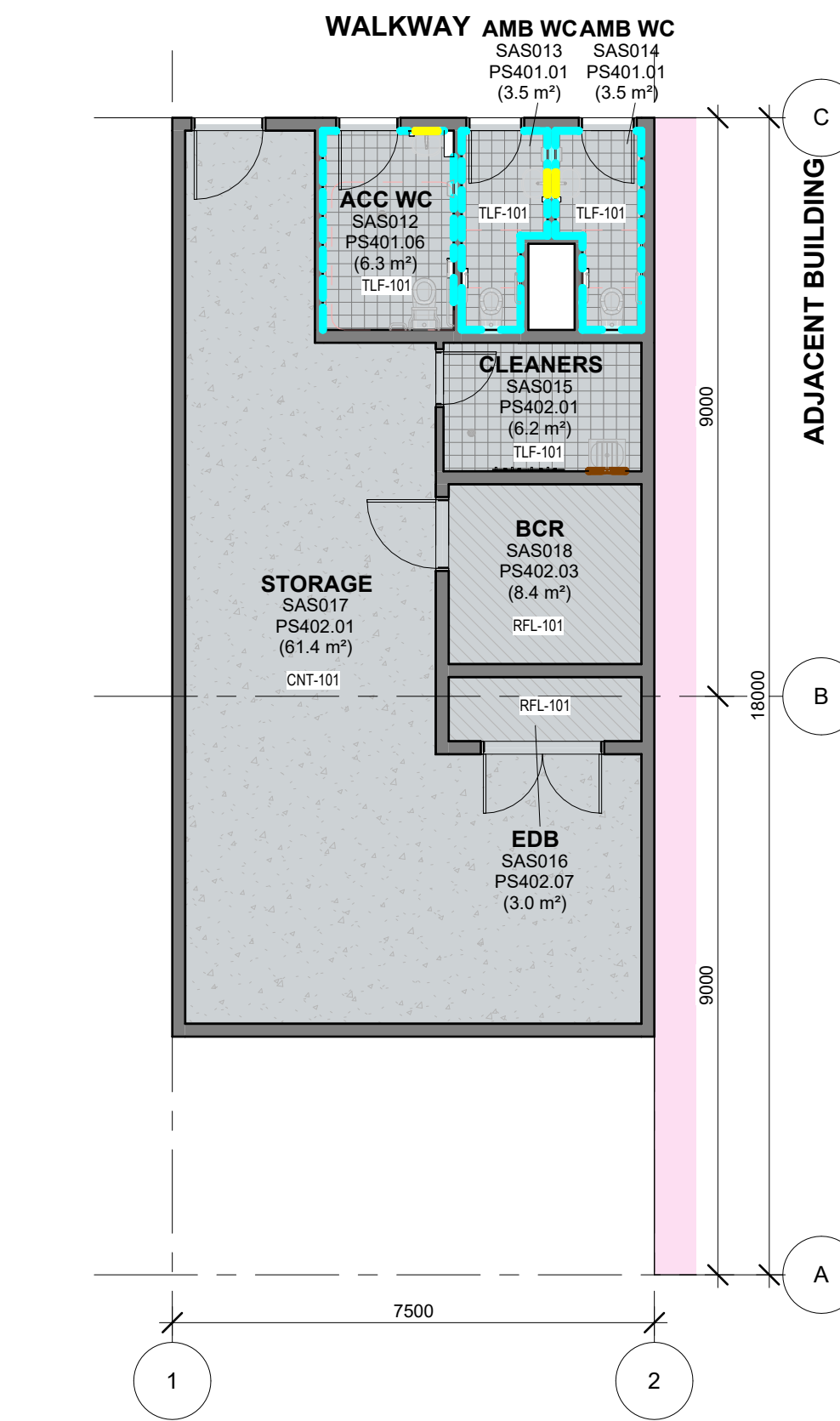




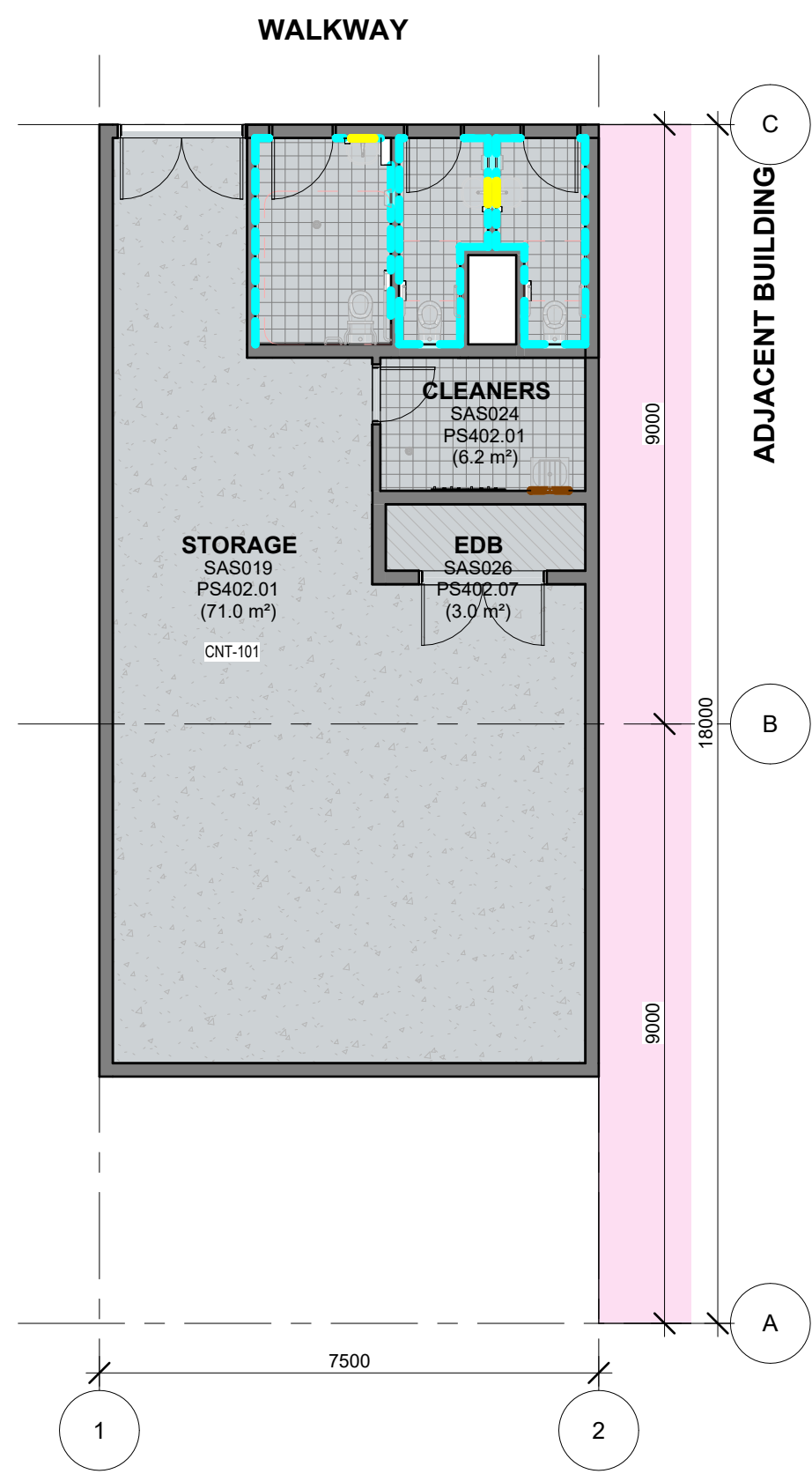
1 PS - SAS - PS G T1 - FINISHES PLAN
1 : 100



2 PS - SAS - PS G FS - FINISHES PLAN
1 : 100



3 PS - SAS - PS T1 - FINISHES PLAN
1 : 100



4 PS - SAS - PS T2 - FINISHES PLAN
1 : 100

- FLOOR FINISH**
- CONCRETE
 - CPT-101 CARPET - TILES
 - CPT-150 CARPET - MARINE GRADE
 - MAT-101 ENTRY MAT
 - RBF-101 RUBBER FLOORING
 - RFL-101 RESILIENT FLOORING
 - RFL-201 RESILIENT FLOORING - SCIENCE
 - RFL-501 RESILIENT FLOORING - CLEANERS AREA
 - TBF-101 TIMBER FLOORING
 - TLF-101 TILE FLOORING
- WALL APPLIED FINISH**
- PIN-101 PINBOARD 100mm AFFL - 2750mm AFFL
 - PIN-102 PINBOARD 1350mm AFFL - 2750mm AFFL
 - PIN-201 PINBOARD 100mm AFFL - 2750mm AFFL
 - VEL-101 VELCRO BOARD 100mm AFFL - 2750mm AFFL
 - VEL-102 VELCRO BOARD 1350mm AFFL - 2750mm AFFL
 - LIN-101 LINOLEUM 100mm AFFL - 2750mm AFFL
 - MIR-201 MIRRORS
 - SPL-101 LAMINATE SPLASHBACK
 - TIP-101 TIMBER PANELS
 - TLW-101 TILES
 - WTB-101 WHITEBOARDS
- NOTE: TO ALL OTHER WALLS, PAINT COLOUR TO BE CONFIRMED



NOTE: REFER TO SERVICES ENGINEER'S DRAWINGS FOR DETAILED INFORMATION. SYMBOLS DRAWN ARE REPRESENTATIONAL ONLY.

SYMBOL LEGEND

TYPE OF CEILING	CLG
NO CEILING	NC
HEIGHT CEILING	CH2700
RAKED CEILING	RAKED
NO CEILING	NO CEILING
MATCH EXISTING	[MTC EX]

CEILING TAG

CLG-100	EXPOSED CONCRETE - CLASS 2 FINISH
CLG-101	SUSPENDED CEILING - STANDARD FLUSH PLASTERBOARD
CLG-102	SUSPENDED CEILING - STANDARD WATER RESISTANT FLUSH PLASTERBOARD
CLG-103	SUSPENDED CEILING - ACOUSTIC PERFORATED PLASTERBOARD
CLG-104	SUSPENDED CEILING - FIRE RATED PLASTERBOARD (R6/R9)
CLG-105	SUSPENDED CEILING - FIRE RATED PLASTERBOARD 1200/1200/120
CLG-110	SUSPENDED CEILING - CEILING TILE 1200 x 600
CLG-111	ACOUSTIC CEILING - DIRECT STICK 12MM
CLG-112	ACOUSTIC CEILING - DIRECT STICK 24MM
CLG-120	ACOUSTIC CEILING - WOOD & METAL WORKSHOP
CLG-210	EXTERNAL FC CEILING
CLG-220	EXTERNAL PERFORATED FC CEILING
CLG-230	EXTERNAL FEATURE CEILING
CLG-310	INTERNAL FEATURE ACOUSTIC PANEL - TYPE 1
CLG-311	INTERNAL FEATURE ACOUSTIC PANEL - TYPE 2
CLG-320	INTERNAL FEATURE CEILING

NOTE: AN ACOUSTIC ASSESSMENT AGAINST THE PERFORMANCE SPECIFICATIONS IS REQUIRED PER PROJECT.

MECHANICAL

MEC-101	SUPPLY AIR SWIRL - 350 DIA 600 X 600
MEC-102	SUPPLY AIR SWIRL - 450 DIA 600 X 600
MEC-103	KITCHEN EXHAUST GRILLE
MEC-104	TOILET EXHAUST GRILLE
MEC-105	RETURN AIR GRILLE
MEC-106	ACCESS PANEL
MEC-107	CEILING MOUNTED FAN
MEC-108	CASSETTE UNIT FCU

LIGHT FITTINGS

ELE-101	SURFACE MOUNTED LINEAR DIFFUSED LIGHT
ELE-102	RECESSED PANEL LED LIGHT - 600x600
ELE-103	RECESSED PANEL LED LIGHT - 300x1200
ELE-104	SURFACE MOUNTED LIGHT
ELE-105	FEATURE PENDANT LIGHT
ELE-106	SURFACE MOUNTED BATTEN WITH EMERGENCY LIGHT
ELE-106	SURFACE MOUNTED BATTEN

NOTE: Assess fixtures type and distribution against strobing effect.

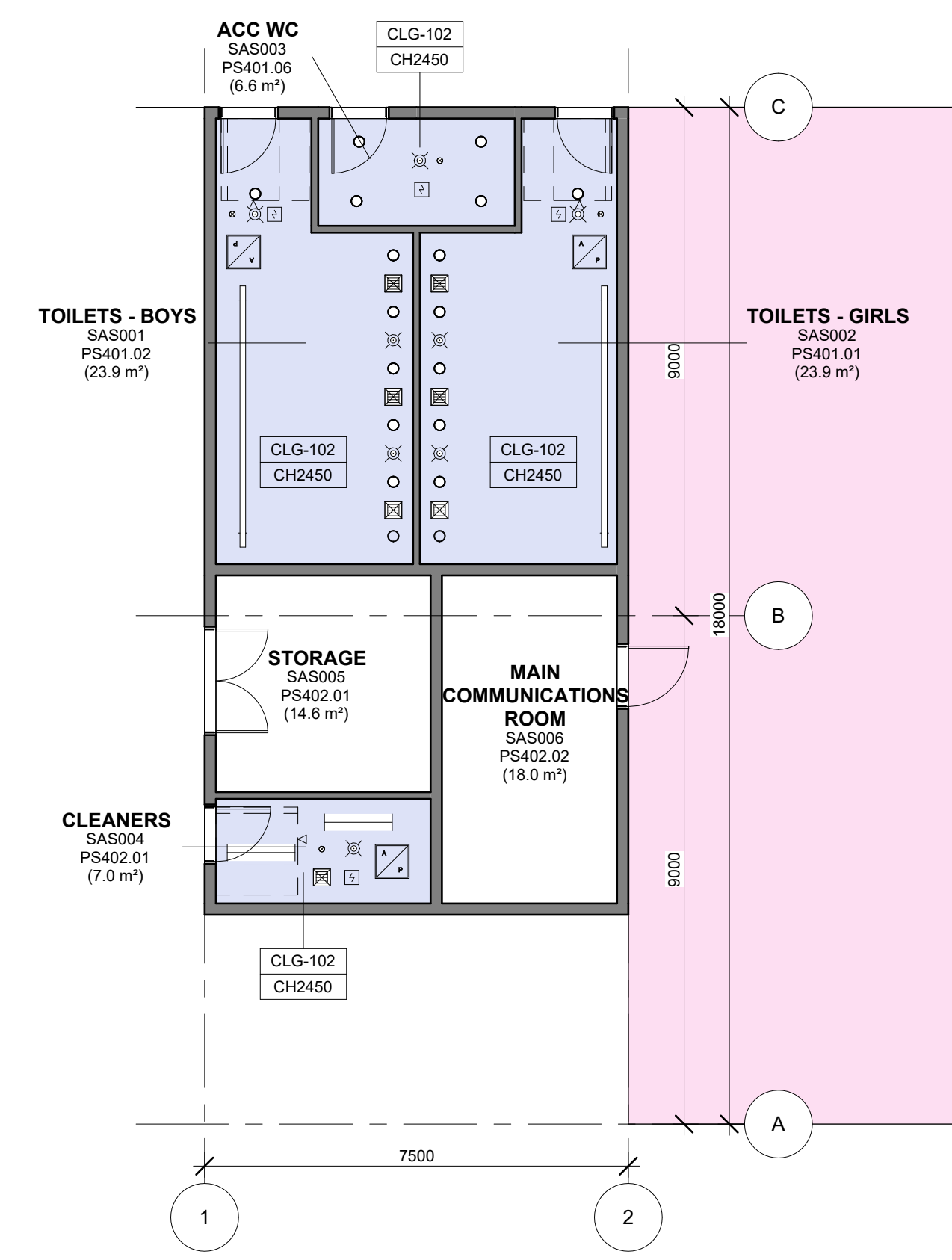
FIRE DETECTION & WARNING SYSTEM

FIR-101	SMOKE DETECTOR
FIR-102	SURFACE MOUNTED SMOKE DETECTOR
FIR-103	CEILING PA SPEAKER
FIR-104	CEILING FIRE WARNING SPEAKER

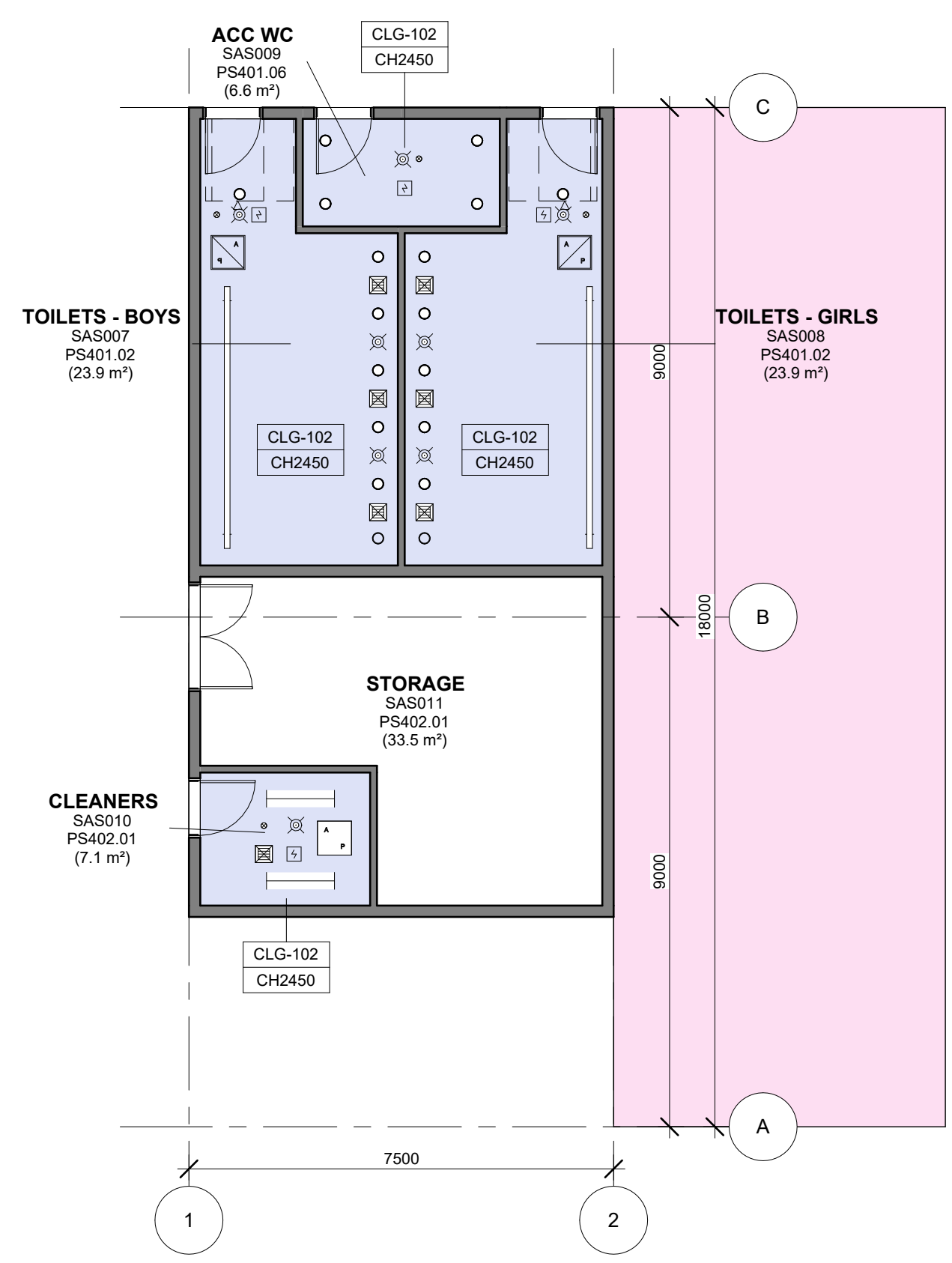
EMERGENCY & EXIT LIGHTING

EML-101	LED EMERGENCY LIGHT
EML-102	LED / FLUORESCENT EMERGENCY EXIT LIGHT FITTING RECESSED
EML-103	LED / FLUORESCENT EMERGENCY EXIT LIGHT FITTING SURFACE MOUNTED
MTS-101	MOTION SENSOR
WAP-101	WIRELESS ACCESS POINT - RED DASHED LINE INDICATES 1m CLEARANCE ZONE
PIR-101	PIR MOTION DETECTOR
XTO-102	CEILING MOUNTED DATA OUTLET

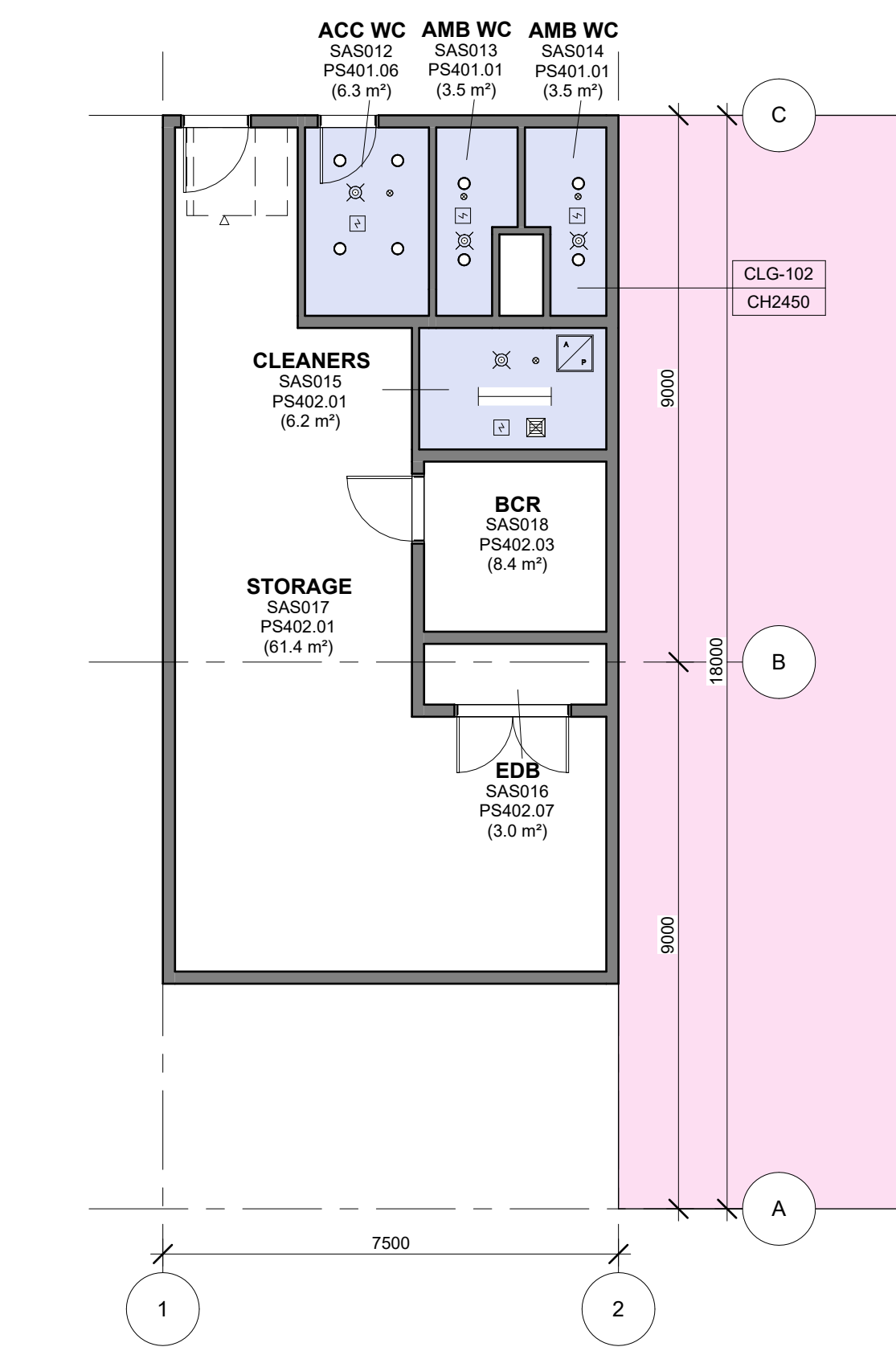
NOTE: WAP - WIRELESS ACCESS POINT PROVIDED TO EVERY ROOM UNLESS NOTED OTHERWISE.



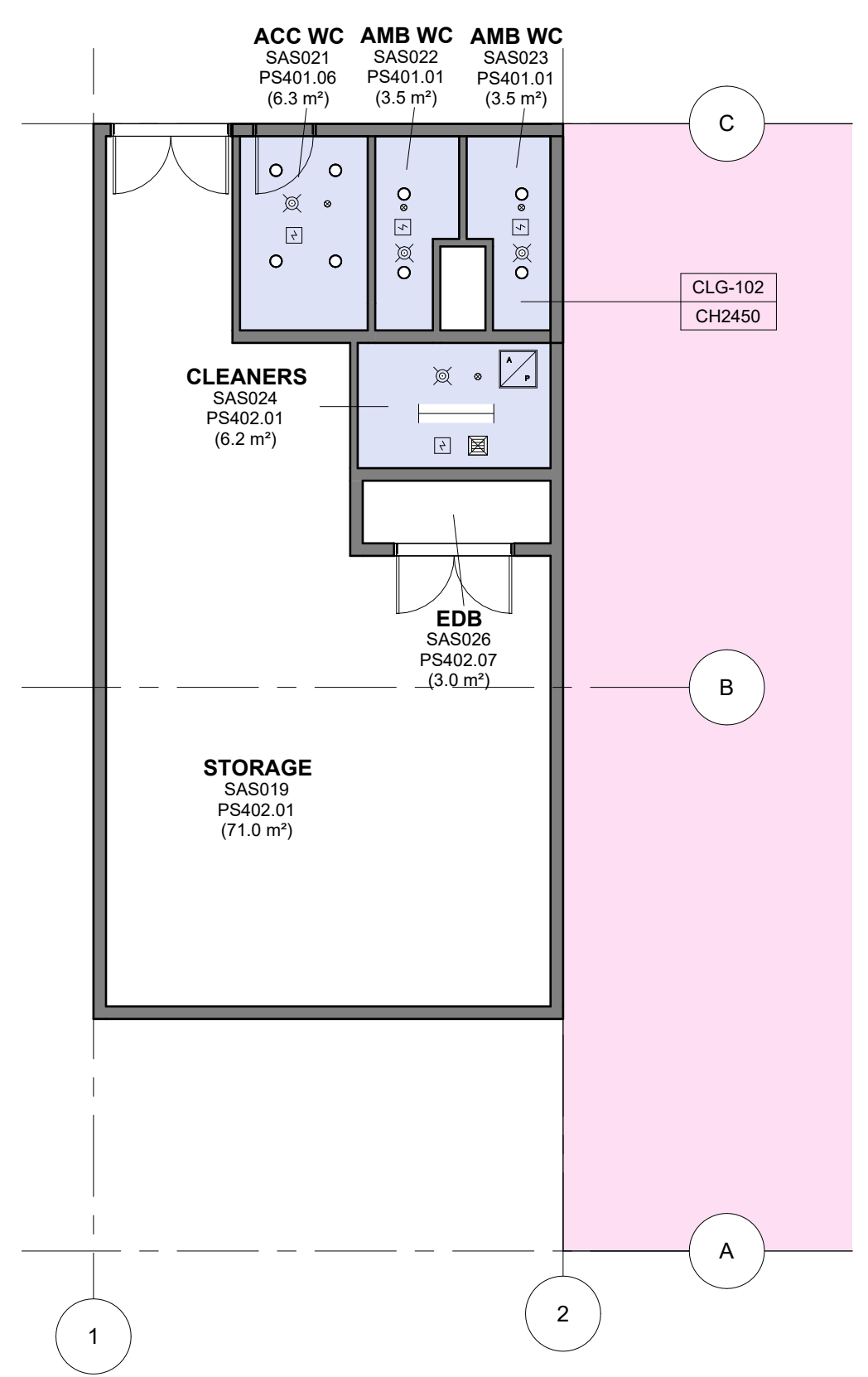
1 PS - SAS - PS G T1 - RCP
1 : 100



2 PS - SAS - PS G FS - RCP
1 : 100



3 PS - SAS - PS T1 - RCP
1 : 100



5 PS - SAS - PS UPPER LEVEL - RCP
1 : 100

Note: This RCP is an illustration of a design intent only. Project specific services shall be designed to the performance specifications outlined in the Patternbook / EFSG. An acoustic assessment against the performance specifications is required per project.



FOR IMPLEMENTATION/USE OF THE SI PATTERN BOOK, NOTE THE FOLLOWING:
INTELLECTUAL PROPERTY Refer to: SI Pattern Book - Introduction, Copyright and Disclaimer.
AGREEMENT OF USE Refer to: SI Pattern Book - Introduction, Copyright and Disclaimer.
SINSW CONTACT Refer to: SI Pattern Book - Introduction, Copyright and Disclaimer.

DRAWING NOTES

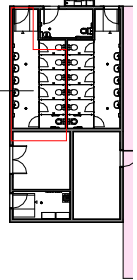
REV	BY	DATE	DESCRIPTION
P01	NC	2025/05/30	FOR INFORMATION
P02	SINSW	2025/07/01	ISSUED FOR EFSG 2025/8

PROJECT NAME
PATTERN BOOK

DRAWING TITLE
PS401 - SAS - RCP PLANS

PROJECT NUMBER PXXXXXX	STATUS FOR INFORMATION
DRW CHK	APP DATE 2025/07/01
SCALE 1 : 100 @A1	DRAWING NO. PAT-SINSW-SAS-PS401- DR-K-0021
REV P02	

Room Name	TOILETS - BOYS
Hub Name	PS 401 STUDENT AMENITIES
Facility ID	PS401.02



Item	Room Data	EFSG Link	Comments
Area Function			
Provisional Areas			
Number of Occupants			
Functional Relationship Considerations			
Other Relevant Info/ Gaps			
ESD Category			
Floor & Skirting	Refer to Finishes Plan & Elevation Drawings Ceramic Tiles graded to falls Coved skirting tiles at wall	https://tinyurl.com/EFSG-Finish	
Ceiling Type	Refer to RCP Drawing	https://tinyurl.com/EFSG-Ceilings	
Wall	Refer to Finishes Plan & Elevation Drawings Wall strengthening required for application of grab rails, etc	https://tinyurl.com/EFSG-Walls	
Doors	Refer to Door Schedule	https://tinyurl.com/EFSG-Doors	
Windows	WINDOWS - OTHER: If windows are included, obscure glazing is required to allow privacy when windows open for ventilation / consider reflections in mirrors / VISUAL PRIVACY: Required	https://tinyurl.com/EFSG-Windows	
Acoustic	N/A	https://tinyurl.com/EFSG-Acoustic	
Ventilation	GENERAL EXHAUST: Required	https://tinyurl.com/EFSG-Ventilation	
Light	N/A	https://tinyurl.com/EFSG-Lighting	
Illumination	LUX LEVEL: 160 lux / LIGHTING CONTROL: Operation in accordance with EFSG BMS	https://tinyurl.com/EFSG-Illumination	
Cooling	N/A	https://tinyurl.com/EFSG-Cooling	
Heating	N/A	https://tinyurl.com/EFSG-Heating	
Gas	NIL	https://tinyurl.com/EFSG-Gas	
ICT (FOR QUANTITIES REFER TO THE ROOM'S POWER & DATA SCHEDULE)		https://tinyurl.com/EFSG-Electrical https://tinyurl.com/EFSG-Comms	
Security	SECURITY LEVEL: Category A - Low Security Level applies	https://tinyurl.com/EFSG-Security	
Water	TEMPERED WATER: Wash Facilities / COLD WATER: Toilet flush	https://tinyurl.com/EFSG-Water	
Drainage	SANITARY DRAINAGE FIXTURES: Refer to Room Layout Plan	https://tinyurl.com/EFSG-Drainage	
Fire Protection	FIRE HOSE REEL: Fire Hose Reels as required to comply with NCC	https://tinyurl.com/EFSG-FireProtection	
Keying	KEYING GENERAL: Keyed Alike Toilets (T) / MASTER KEYING: Master keyed - Administration & Staff (AF)	https://tinyurl.com/EFSG-Keying	
Signage	SIGNS GENERAL: Braille and Tactile signage as required by access regulations AMS room identification door signage (variable - number of room sequential within block) Wayfinding signage in accordance with AS 1428 4 'Toilets - Boys - WCs'	https://tinyurl.com/EFSG-Signage	



www.schoolinfrastructure.nsw.gov.au

FOR IMPLEMENTATION/USE OF THE SI PATTERN BOOK, NOTE THE FOLLOWING:
 INTELLECTUAL PROPERTY
 Refer to: SI Pattern Book - Introduction, Copyright and Disclaimer.
 AGREEMENT OF USE
 Refer to: SI Pattern Book - Introduction, Copyright and Disclaimer.
 SINSW CONTACT
 Refer to: SI Pattern Book - Introduction, Copyright and Disclaimer.

DRAWING NOTES

REV	BY	DATE	DESCRIPTION
P01	NC	2025/05/30	FOR INFORMATION
P02	SINSW	2025/07/01	ISSUED FOR EFSG 2025r0

PROJECT NAME
PATTERN BOOK

DRAWING TITLE
PS401.01 - SAS - TOILETS - BOYS - WCs - RDS

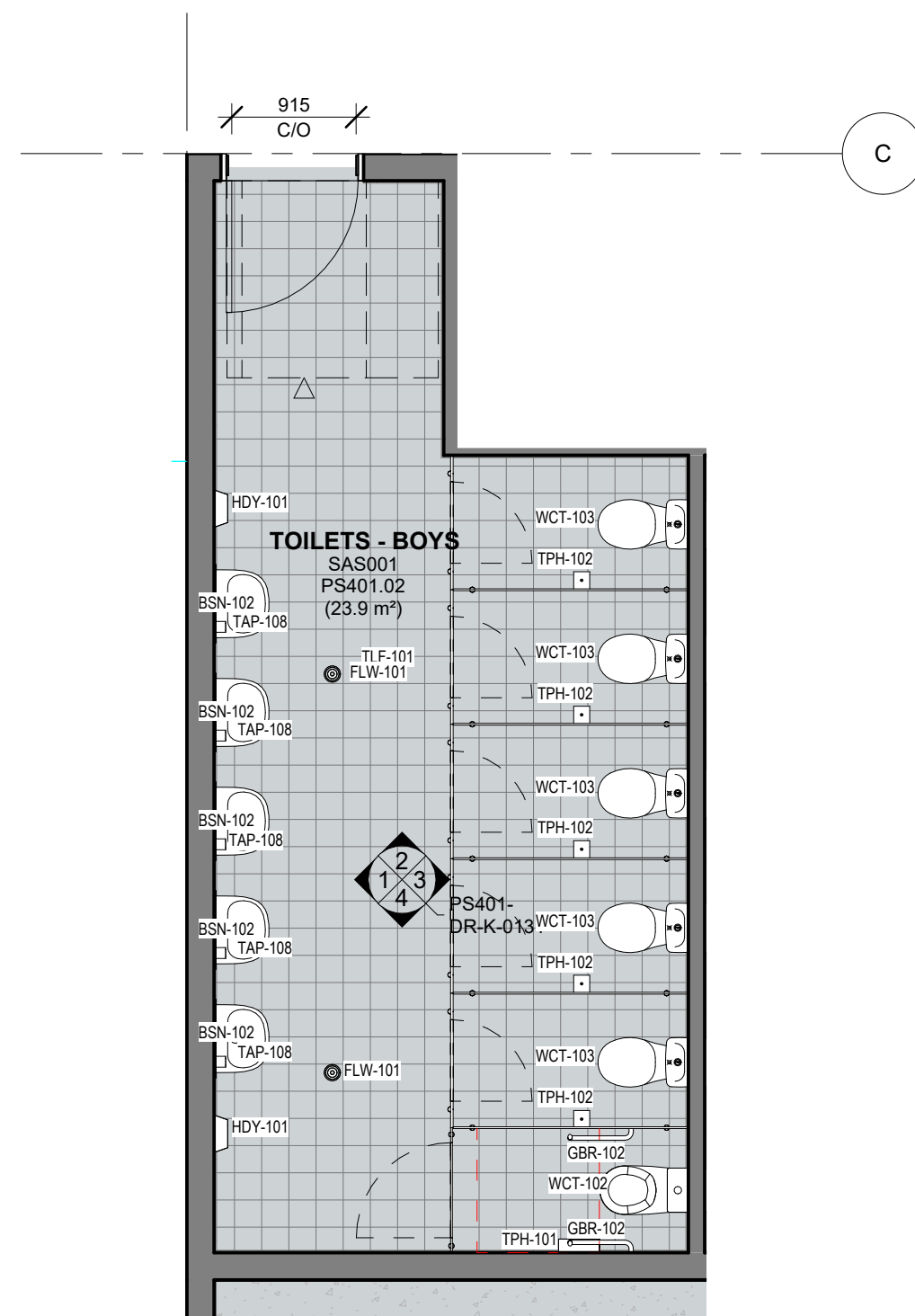
PROJECT NUMBER
PXXXXXX

STATUS
FOR INFORMATION

DRW	CHK	APP	DATE	SCALE
			2025/07/01	1 : 500 @A3

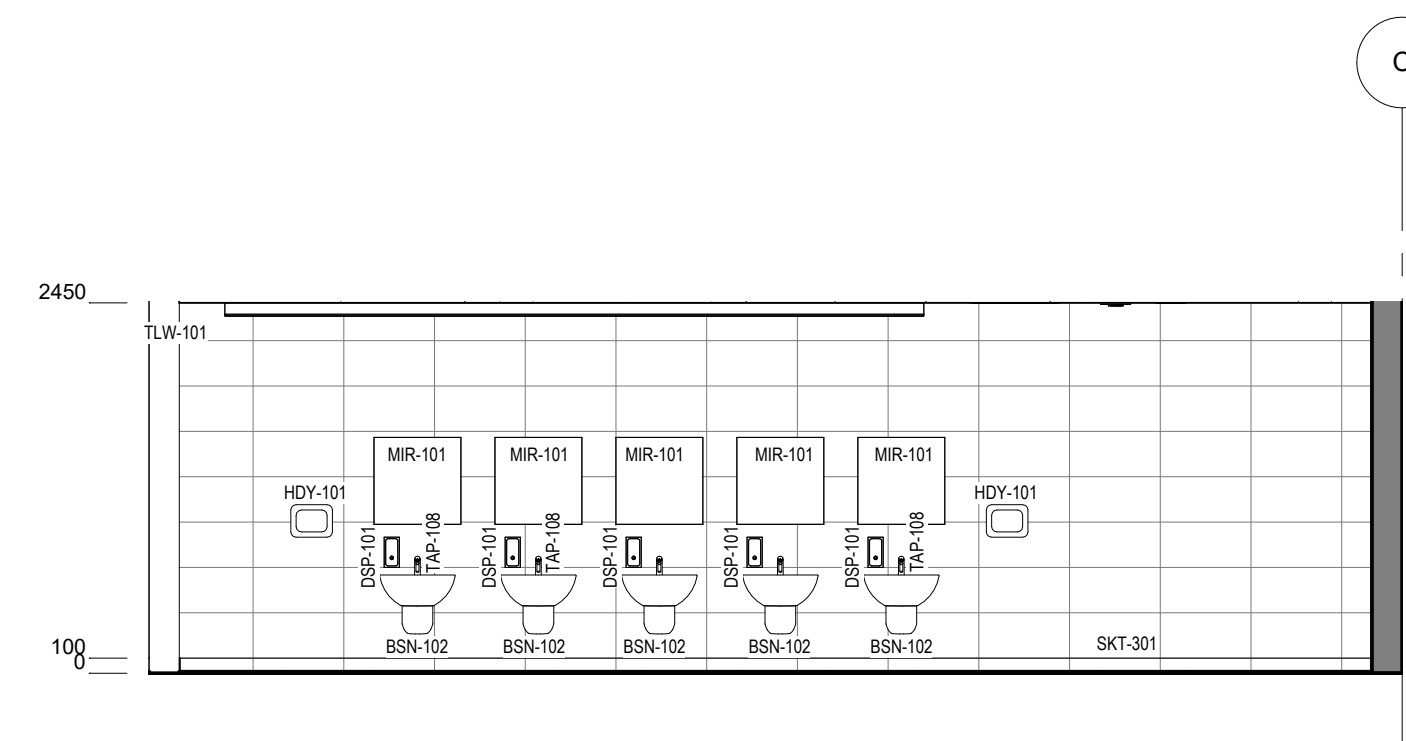
DRAWING NO.
PAT-SINSW-SAS-PS401- DR-K-0111

REV
P02

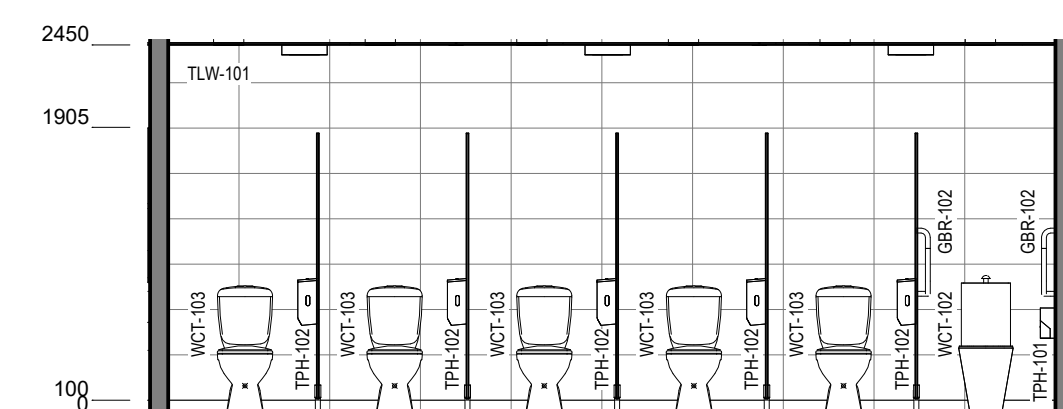


0 PS - SAS - TOILETS BOYS - FFE PLAN
1 : 50

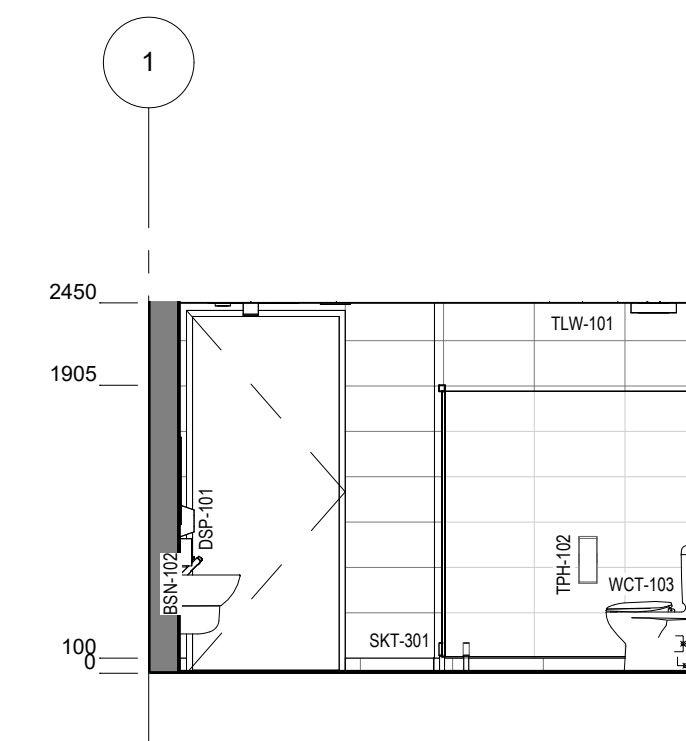
PS - SAS - TOILETS BOYS - POWER & DATA SCHEDULE		
CODE	DESCRIPTION	QTY



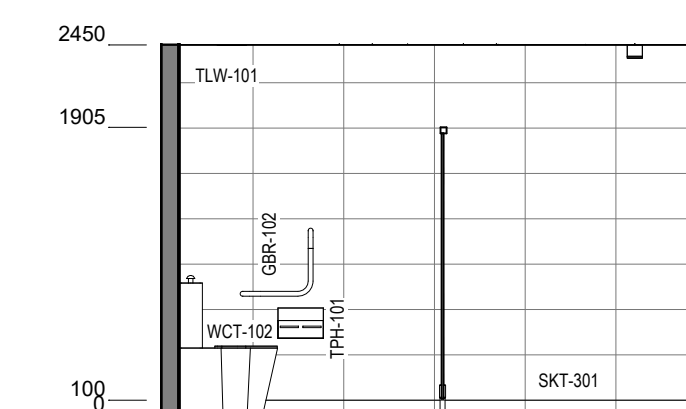
1 PS - SAS - TOILETS BOYS - ELEVATION
1 : 50



3 PS - SAS - TOILETS BOYS - ELEVATION
1 : 50



2 PS - SAS - TOILETS BOYS - ELEVATION
1 : 50



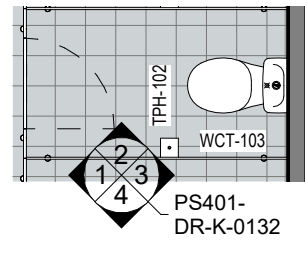
4 PS - SAS - TOILETS BOYS - ELEVATION
1 : 50

PS - SAS - BOYS TOILET - FFE SCHEDULE					
CODE	DESCRIPTION	IMAGE	QTY	GROUP	COMMENTS
BSN-102	BASIN - Wall Mounted		5	1	
BSN-150	BASIN - Wall Mounted - Shroud		5	1	
DSP-101	DISPENSER - Soap		5	1	
FLW-101	FLOOR WASTE - Round		2	1	
GBR-102	GRAB RAIL - Ambulant		2		

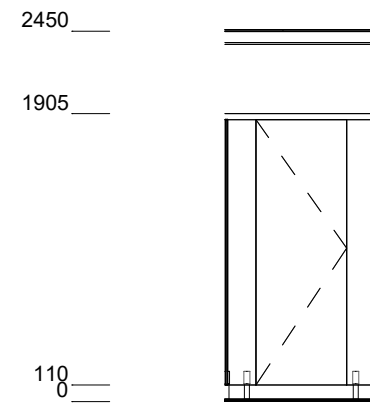
PS - SAS - BOYS TOILET - FFE SCHEDULE					
CODE	DESCRIPTION	IMAGE	QTY	GROUP	COMMENTS
HDY-101	HAND DRYER - Wall Mounted		2	1	
MIR-101	MIRROR - Accessible - Student		5	1	
TAP-108	TAP - Basin - Student		5	1	
TPH-101	DISPENSER - Toilet Paper - Double - Student		1	1	
TPH-102	DISPENSER - Toilet Paper - Student		5	1	

PS - SAS - BOYS TOILET - FFE SCHEDULE					
CODE	DESCRIPTION	IMAGE	QTY	GROUP	COMMENTS
WCT-102	TOILET SUITE - Ambulant		1	1	
WCT-103	TOILET SUITE - General		5	1	

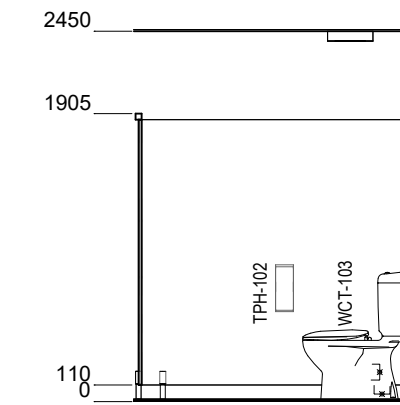




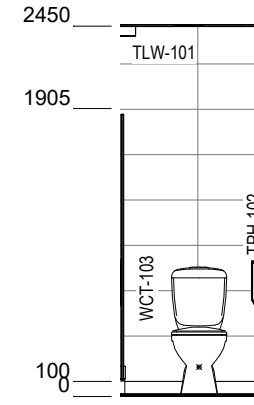
0 PS - SAS - TOILETS CUBICLE WC - FFE PLAN
1 : 50



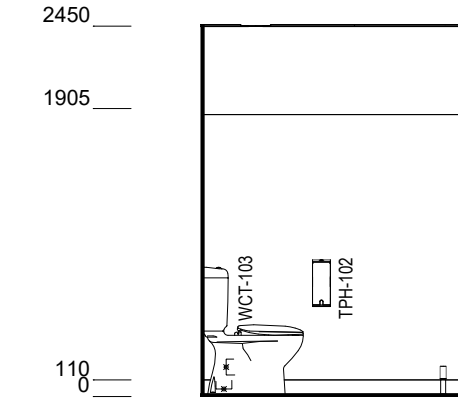
1 PS - SAS - CUBICLE WC - ELEVATION
1 : 50



2 PS - SAS - CUBICLE WC - ELEVATION
1 : 50

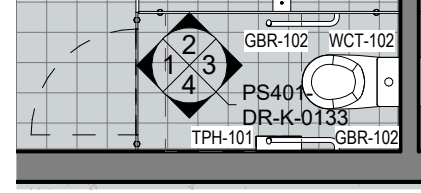


3 PS - SAS - CUBICLE WC - ELEVATION
1 : 50



4 PS - SAS - CUBICLE WC - ELEVATION
1 : 50

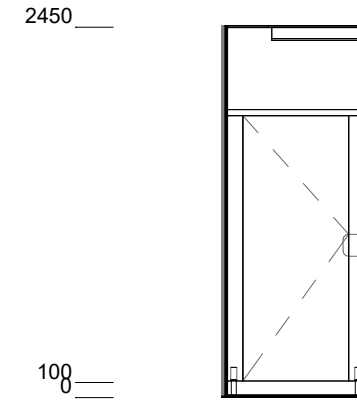




PS - SAS - TOILETS AMBULANT WC - FFE

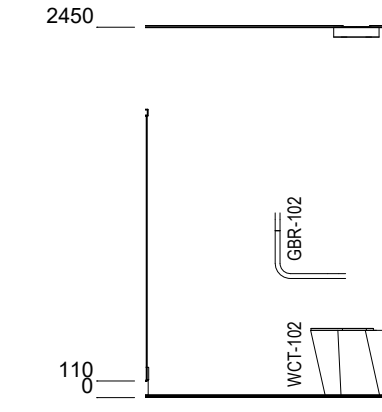
0 PLAN

1 : 50



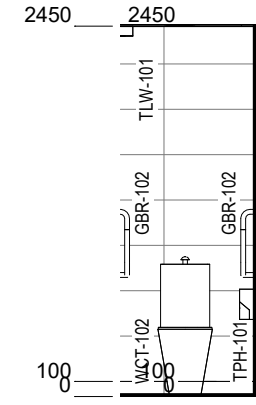
1 PS - SAS - AMBULANT WC - ELEVATION

1 : 50



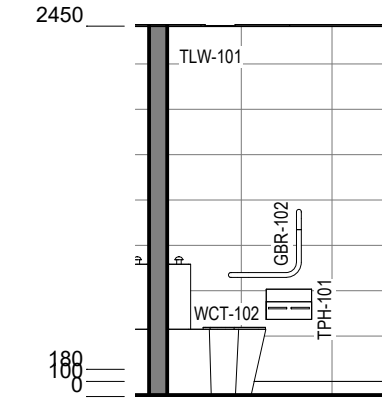
2 PS - SAS - AMBULANT WC - ELEVATION

1 : 50



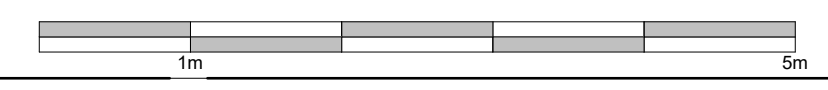
3 PS - SAS - AMBULANT WC - ELEVATION

1 : 50

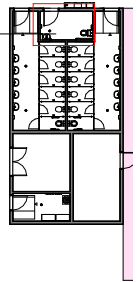


4 PS - SAS - AMBULANT WC - ELEVATION

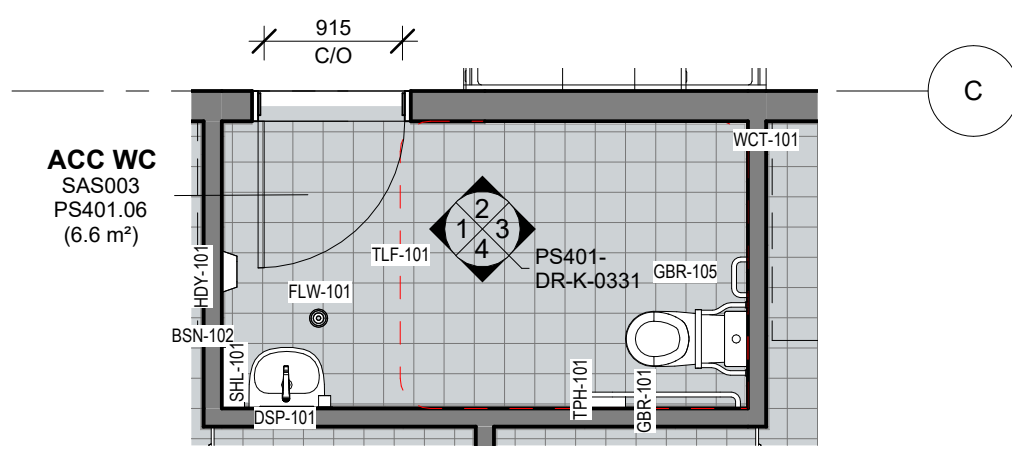
1 : 50



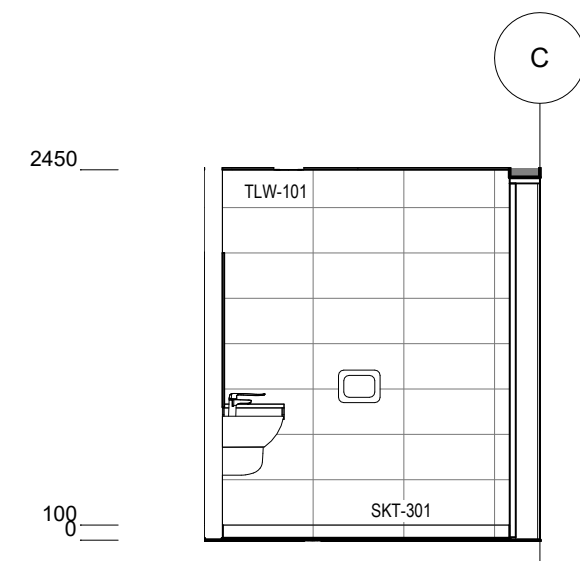
Room Name	ACC WC
Hub Name	PS 401 STUDENT AMENITIES
Facility ID	PS401.06



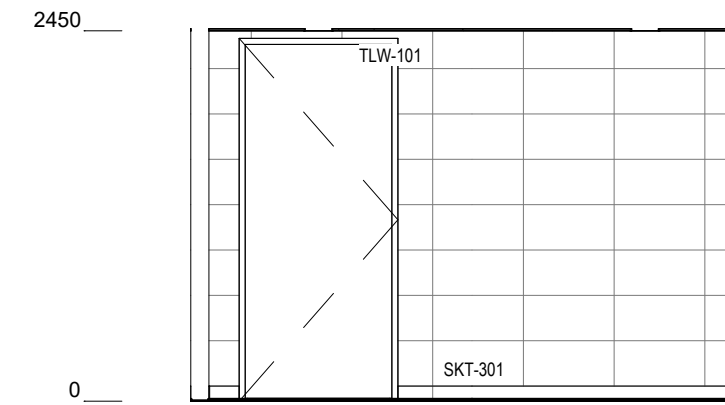
Item	Room Data	EFSG Link	Comments
Area Function	Staff sanitary facility		
Provisional Areas			
Number of Occupants	1 person		
Functional Relationship Considerations			
Other Relevant Info/ Gaps			
ESD Category			
Floor & Skirting	Refer to Finishes Plan & Elevation Drawings Ceramic Tiles graded to falls Covered skirting tiles at wall	https://tinyurl.com/EFSG-Finish	
Ceiling Type	Refer to RCP Drawing	https://tinyurl.com/EFSG-Ceilings	
Wall	Refer to Finishes Plan & Elevation Drawings Wall strengthening required for application of grab rails, etc	https://tinyurl.com/EFSG-Walls	
Doors	Refer to Door Schedule	https://tinyurl.com/EFSG-Doors	
Windows	WINDOWS - OTHER: If windows are included, obscure glazing is required to allow privacy when windows open for ventilation / consider reflections in mirrors / VISUAL PRIVACY: Required	https://tinyurl.com/EFSG-Windows	
Acoustic	Acoustic privacy is required	https://tinyurl.com/EFSG-Acoustic	
Ventilation	GENERAL EXHAUST: Required	https://tinyurl.com/EFSG-Ventilation	
Light	N/A	https://tinyurl.com/EFSG-Lighting	
Illumination	LUX LEVEL: 160 lux / LIGHTING CONTROL: Operation in accordance with EFSG BMS	https://tinyurl.com/EFSG-Illumination	
Cooling	N/A	https://tinyurl.com/EFSG-Cooling	
Heating	N/A	https://tinyurl.com/EFSG-Heating	
Gas	NIL	https://tinyurl.com/EFSG-Gas	
ICT	(FOR QUANTITIES REFER TO THE ROOM'S POWER & DATA SCHEDULE)	https://tinyurl.com/EFSG-Electrical https://tinyurl.com/EFSG-Comms	
Security	SECURITY LEVEL: Category A - Low Security Level applies	https://tinyurl.com/EFSG-Security	
Water	TEMPERED WATER: Wash Facilities / COLD WATER: Toilet flush	https://tinyurl.com/EFSG-Water	
Drainage	SANITARY DRAINAGE FIXTURES: Refer to Room Layout Plan	https://tinyurl.com/EFSG-Drainage	
Fire Protection	FIRE HOSE REEL: Fire Hose Reels as required to comply with NCC	https://tinyurl.com/EFSG-FireProtection	
Keying	KEYING GENERAL: Keyed Alike Toilets (T) / MASTER KEYING: Master keyed - Administration & Staff (AF)	https://tinyurl.com/EFSG-Keying	
Signage	SIGNS GENERAL: Braille and Tactile signage as required by access regulations AMS room identification door signage (variable - number of room sequential within block) Wayfinding signage in accordance with AS 1428 4 'Access Toilet'	https://tinyurl.com/EFSG-Signage	



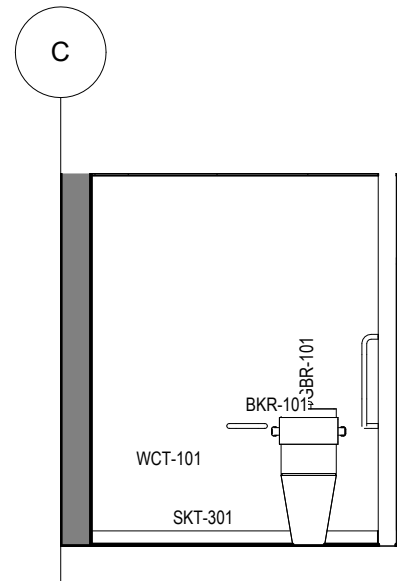
0 PS - SAS - ACCESS TOILET - FFE PLAN
1 : 50



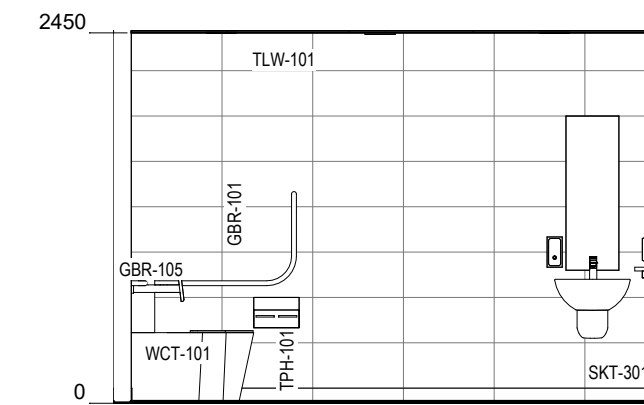
1 PS - SAS - ACCESS TOILET - ELEVATION
1 : 50



2 PS - SAS - ACCESS TOILET - ELEVATION
1 : 50



3 PS - SAS - ACCESS TOILET - ELEVATION
1 : 50



4 PS - SAS - ACCESS TOILET - ELEVATION
1 : 50

PS - SAS - Access Toilet - POWER & DATA SCHEDULE

CODE	DESCRIPTION	QTY

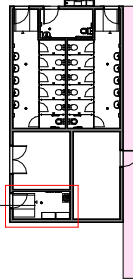
PS - SAS - Access Toilet - FFE SCHEDULE					
CODE	DESCRIPTION	IMAGE	QTY	GROUP	COMMENTS
BKR-101	BACKREST - Accessible		1	1	
BSN-102	BASIN - Wall Mounted		1	1	
BSN-150	BASIN - Wall Mounted - Shroud		1	1	
DSP-101	DISPENSER - Soap		1	1	
FLW-101	FLOOR WASTE - Round		1	1	
GBR-101	GRAB RAIL - Accessible		1	1	

PS - SAS - Access Toilet - FFE SCHEDULE					
CODE	DESCRIPTION	IMAGE	QTY	GROUP	COMMENTS
GBR-105	GRAB RAIL - Horizontal Capless		1	1	
HDY-101	HAND DRYER - Wall Mounted		1	1	
MIR-101	MIRROR - Accessible - Student		1	1	
SHL-101	SHELF - Bathroom		1	1	
TAP-102	TAP - Bathroom		1	1	
TPH-101	DISPENSER - Toilet Paper - Double - Student		1	1	

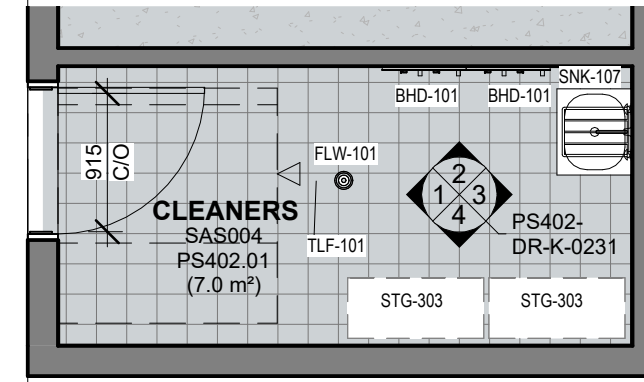
PS - SAS - Access Toilet - FFE SCHEDULE					
CODE	DESCRIPTION	IMAGE	QTY	GROUP	COMMENTS
WCT-101	TOILET SUITE - Accessible		1	1	



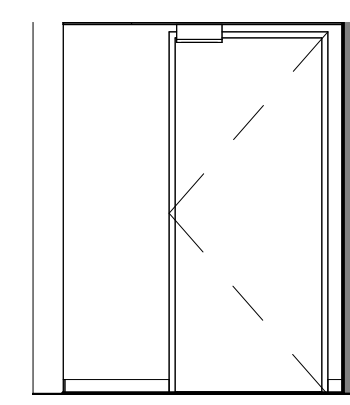
Room Name	CLEANERS
Hub Name	PS 401 STUDENT AMENITIES
Facility ID	PS402.01



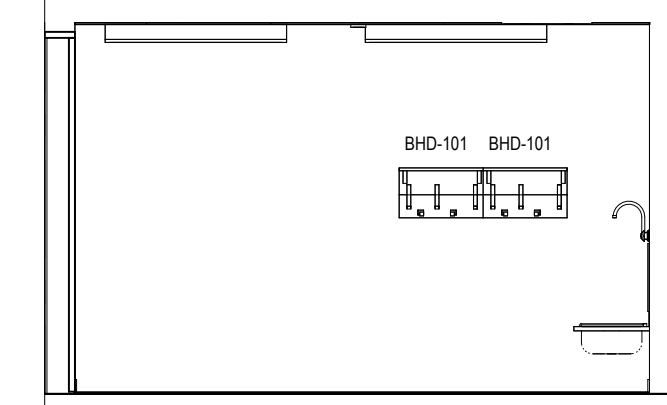
Item	Room Data	EFSG Link	Comments
Area Function			
Provisional Areas			
Number of Occupants			
Functional Relationship Considerations			
Other Relevant Info/ Gaps			
ESD Category			
Floor & Skirting	Refer to Finishes Plan & Elevation Drawings Ceramic Tiles graded to falls Coved skirting tiles at wall	https://tinyurl.com/EFSG-Finish	
Ceiling Type	Refer to RCP Drawing	https://tinyurl.com/EFSG-Ceilings	
Wall	Refer to Finishes Plan Drawings	https://tinyurl.com/EFSG-Walls	
Doors	Refer to Door Schedule	https://tinyurl.com/EFSG-Doors	
Windows	N/A	https://tinyurl.com/EFSG-Windows	
Acoustic	N/A	https://tinyurl.com/EFSG-Acoustic	
Ventilation		https://tinyurl.com/EFSG-Ventilation	
Light	N/A	https://tinyurl.com/EFSG-Lighting	
Illumination	LUX LEVEL: 160 lux / LIGHTING CONTROL: Operation in accordance with EFSG BMS	https://tinyurl.com/EFSG-Illumination	
Cooling	N/A	https://tinyurl.com/EFSG-Cooling	
Heating	N/A	https://tinyurl.com/EFSG-Heating	
Gas	NIL	https://tinyurl.com/EFSG-Gas	
ICT	(FOR QUANTITIES REFER TO THE ROOM'S POWER & DATA SCHEDULE)	https://tinyurl.com/EFSG-Electrical https://tinyurl.com/EFSG-Comms	
Security	SECURITY LEVEL B: Category B - Moderately Low Security Level applies	https://tinyurl.com/EFSG-Security	
Water	HOT WATER: Required / COLD WATER: Required	https://tinyurl.com/EFSG-Water	
Drainage	SANITARY DRAINAGE FIXTURES: Refer to Room Layout Plan	https://tinyurl.com/EFSG-Drainage	
Fire Protection	FIRE HOSE REEL: Fire Hose Reels as required to comply with NCC	https://tinyurl.com/EFSG-FireProtection	
Keying	KEYING GENERAL: Keyed Alike Toilets (T) / MASTER KEYING: Master keyed - Administration & Staff (AF)	https://tinyurl.com/EFSG-Keying	
Signage	DOOR SIGNAGE: "CLEARNING DISTRIBUTED STORE"	https://tinyurl.com/EFSG-Signage	



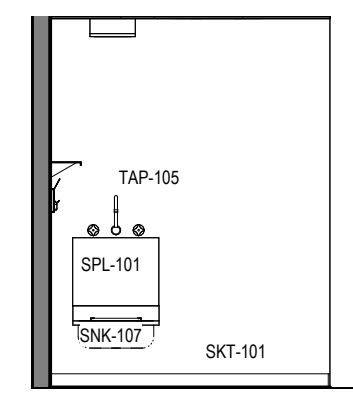
1
0 PS - SAS - CLEANING DISTRIBUTED STORE
 - FFE PLAN
 1 : 50



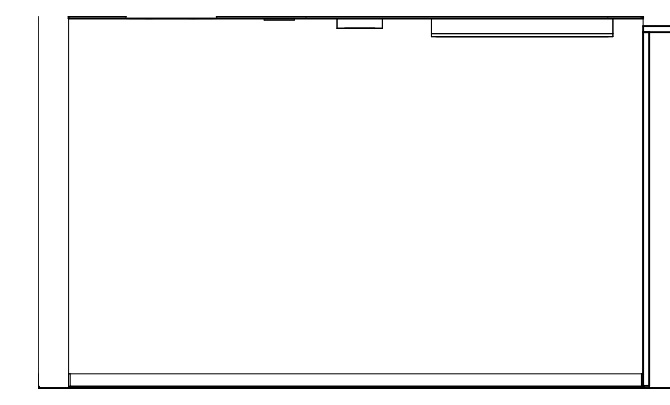
1 PS - SAS - CLEANERS - ELEVATION
 1 : 50



2 PS - SAS - CLEANERS - ELEVATION
 1 : 50



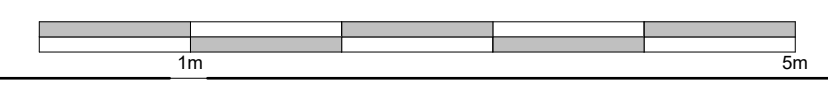
3 PS - SAS - CLEANERS - ELEVATION
 1 : 50



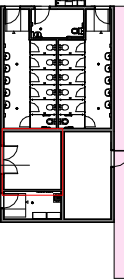
4 PS - SAS - CLEANERS - ELEVATION
 1 : 50

PS - SAS - CLEANERS - POWER & DATA SCHEDULE		
CODE	DESCRIPTION	QTY

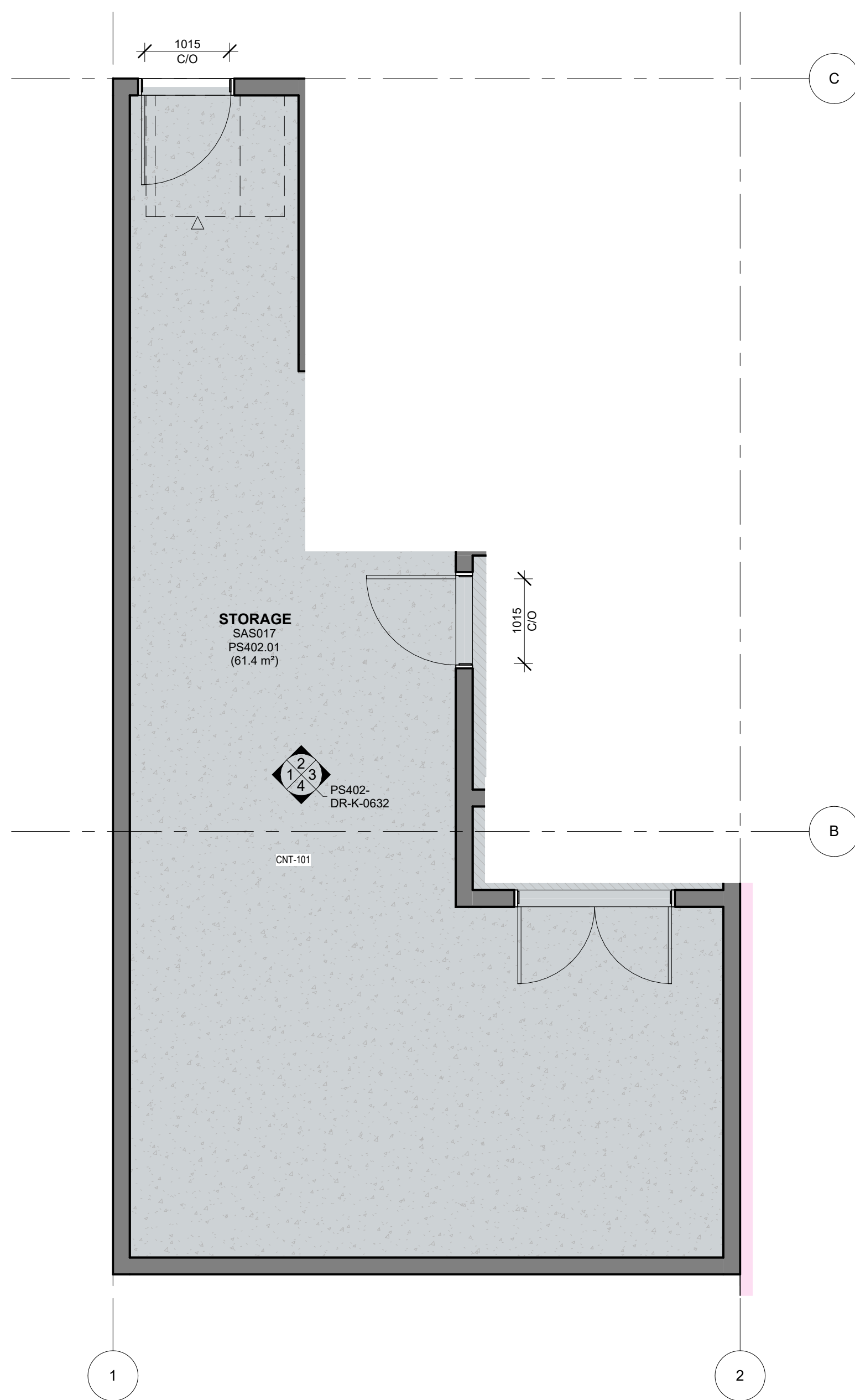
PS - SAS - CLEANERS - FFE SCHEDULE					
CODE	DESCRIPTION	IMAGE	QTY	GROUP	COMMENTS
BHD-101	BROOM HOLDER - Wall Mounted		2	1	
FLW-101	FLOOR WASTE - Round		1	1	
SNK-107	SINK - Cleaners		1	1	
STG-303	STORAGE - Steel Shelving - 900W x 400D x 2100H		2	2	
TAP-105	TAP - Cleaners - Wall Mounted		1	1	



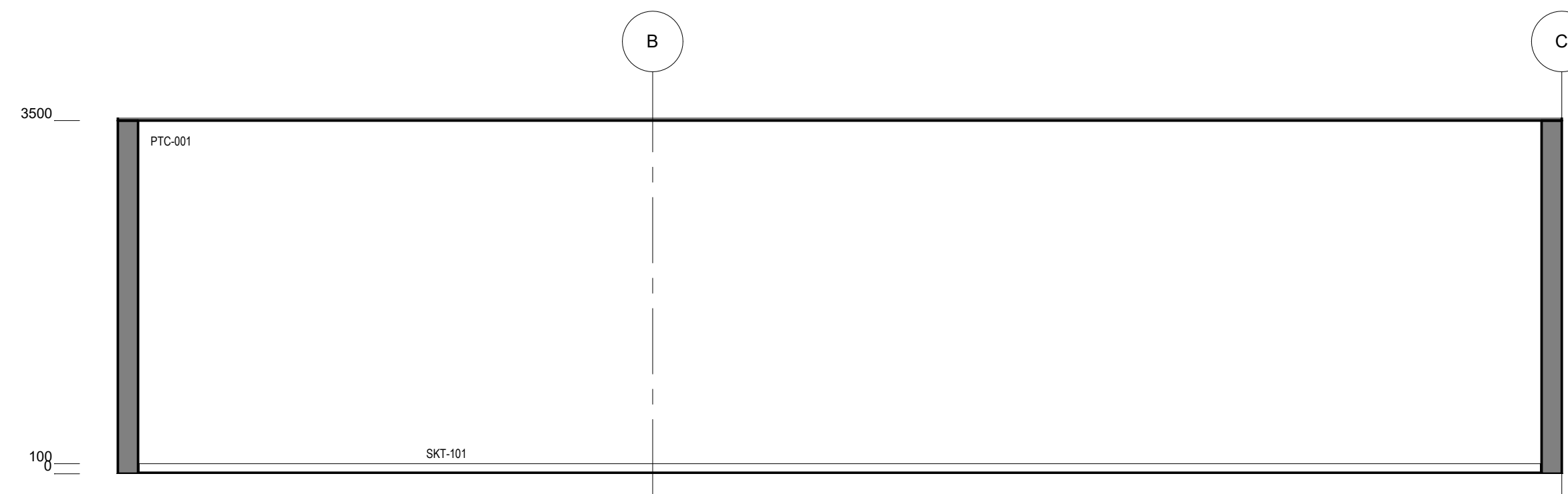
Room Name	STORAGE
Hub Name	PS 402 OTHER STORAGE / SERVICES
Facility ID	PS402.01



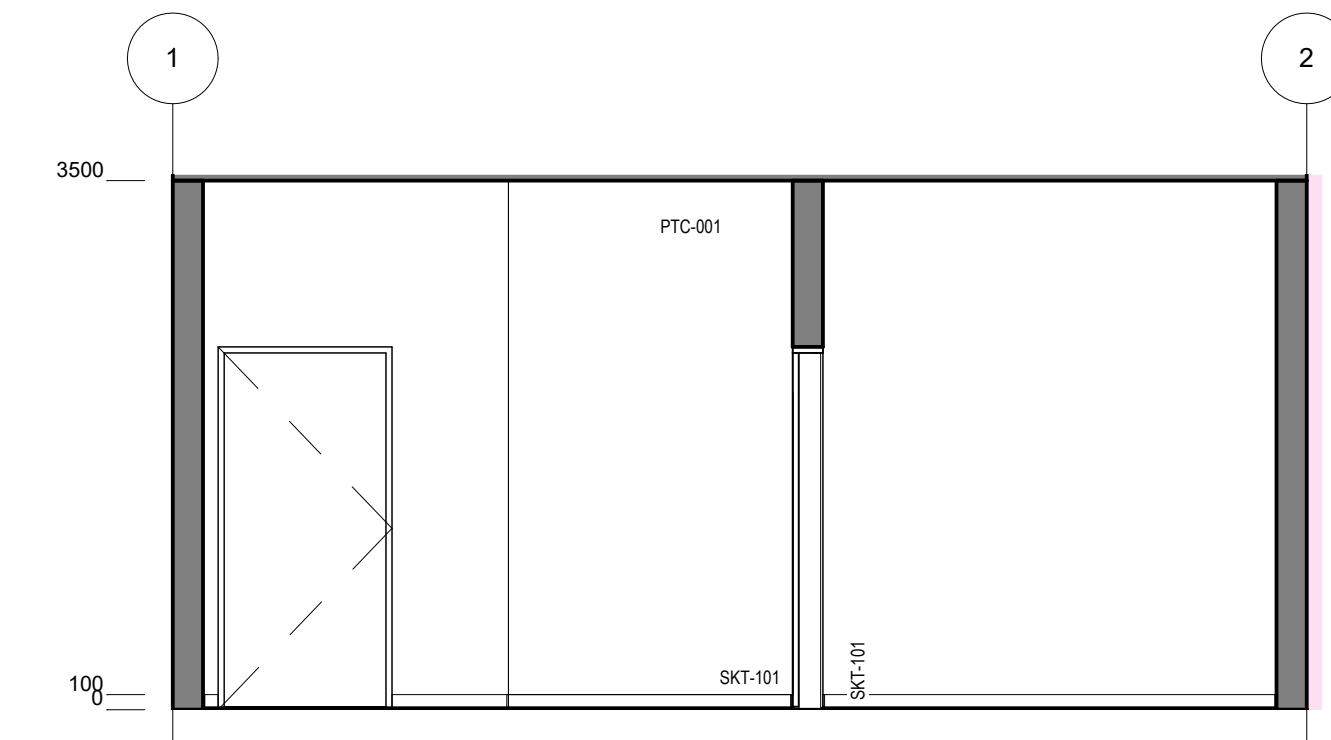
Item	Room Data	EFSG Link	Comments
Area Function			
Provisional Areas			
Number of Occupants			
Functional Relationship Considerations			
Other Relevant Info/ Gaps			
ESD Category			
Floor & Skirting	Refer to Finishes Plan & Elevation Drawings Ceramic Tiles graded to falls Coved skirting tiles at wall	https://tinyurl.com/EFSG-Finish	
Ceiling Type	Refer to RCP Drawing	https://tinyurl.com/EFSG-Ceilings	
Wall	Refer to Finishes Plan Drawings	https://tinyurl.com/EFSG-Walls	
Doors	Refer to Door Schedule	https://tinyurl.com/EFSG-Doors	
Windows	N/A	https://tinyurl.com/EFSG-Windows	
Acoustic	N/A	https://tinyurl.com/EFSG-Acoustic	
Ventilation		https://tinyurl.com/EFSG-Ventilation	
Light	N/A	https://tinyurl.com/EFSG-Lighting	
Illumination	LUX LEVEL: 160 lux / LIGHTING CONTROL: Operation in accordance with EFSG BMS	https://tinyurl.com/EFSG-Illumination	
Cooling	N/A	https://tinyurl.com/EFSG-Cooling	
Heating	N/A	https://tinyurl.com/EFSG-Heating	
Gas	NIL	https://tinyurl.com/EFSG-Gas	
ICT	(FOR QUANTITIES REFER TO THE ROOM'S POWER & DATA SCHEDULE)	https://tinyurl.com/EFSG-Electrical https://tinyurl.com/EFSG-Comms	
Security	SECURITY LEVEL B: Category B - Moderately Low Security Level applies	https://tinyurl.com/EFSG-Security	
Water	HOT WATER: Required / COLD WATER: Required	https://tinyurl.com/EFSG-Water	
Drainage	SANITARY DRAINAGE FIXTURES: Refer to Room Layout Plan	https://tinyurl.com/EFSG-Drainage	
Fire Protection	FIRE HOSE REEL: Fire Hose Reels as required to comply with NCC	https://tinyurl.com/EFSG-FireProtection	
Keying	KEYING GENERAL: Keyed Alike Toilets (T) / MASTER KEYING: Master keyed - Administration & Staff (AF)	https://tinyurl.com/EFSG-Keying	
Signage	DOOR SIGNAGE: "CLEARNING DISTRIBUTED STORE"	https://tinyurl.com/EFSG-Signage	



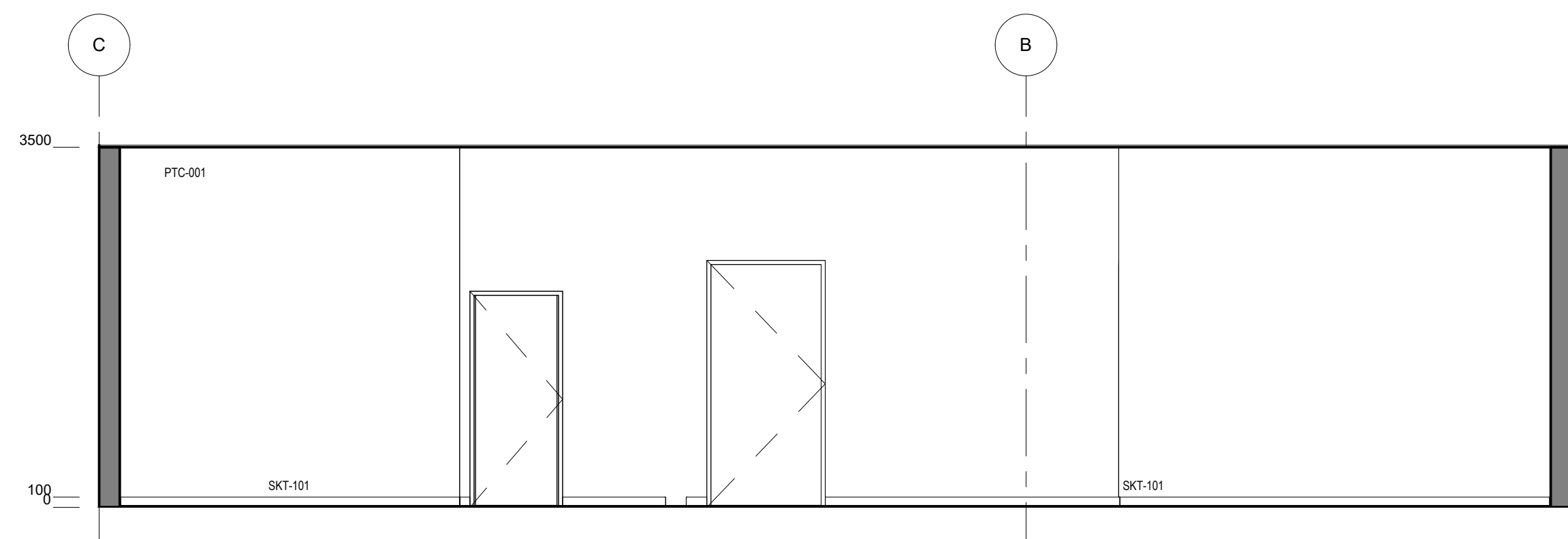
0 PS - SAS - PS T1 STORAGE SERVICE AREA
- FFE PLAN
1 : 50



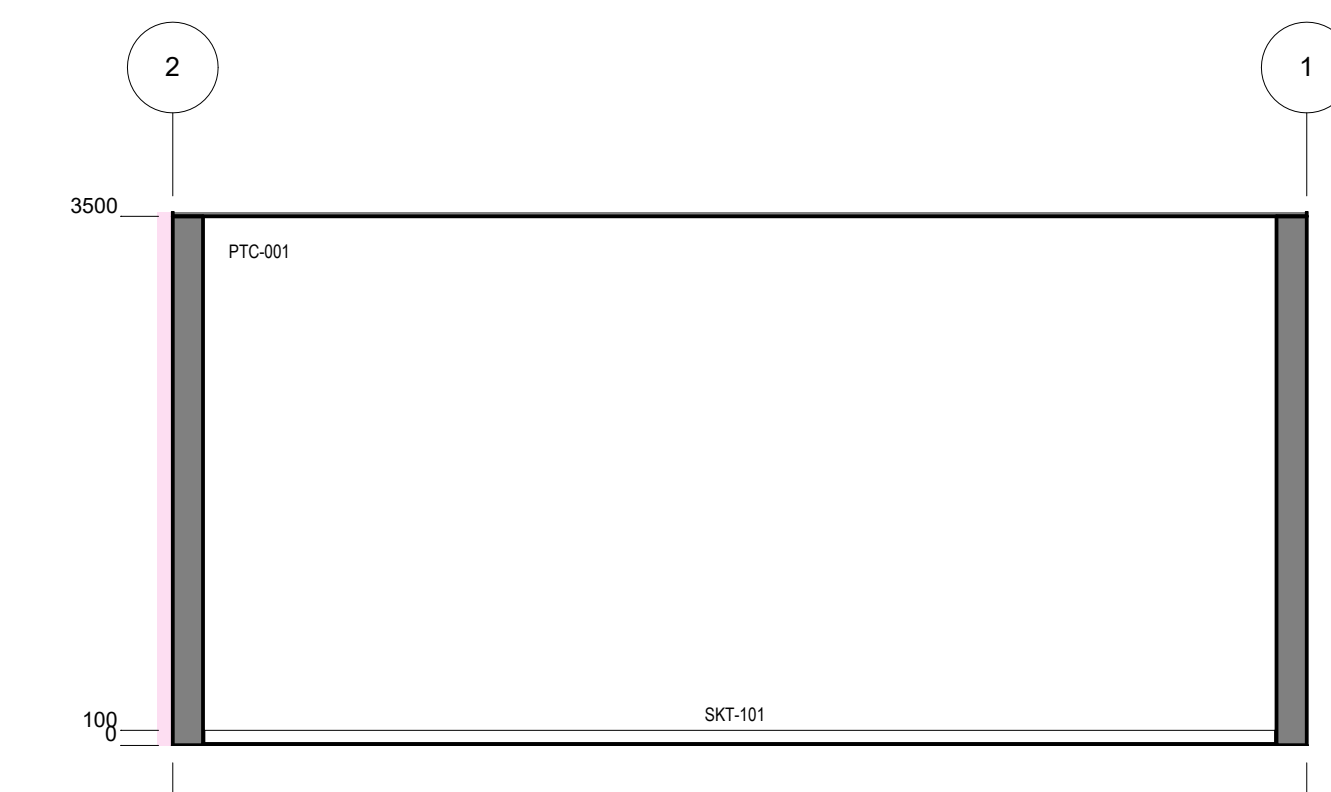
1 PS - SAS - PS T1 STORAGE SERVICE AREA
- ELEVATION
1 : 50



2 PS - SAS - PS T1 STORAGE SERVICE AREA
- ELEVATION
1 : 50



3 PS - SAS - PS T1 STORAGE SERVICE AREA
- ELEVATION
1 : 50



4 PS - SAS - PS T1 STORAGE SERVICE AREA
- ELEVATION
1 : 50

PS - SAS - STORAGE - POWER & DATA SCHEDULE		
CODE	DESCRIPTION	QTY

PS - SAS - STORAGE - FFE SCHEDULE					
CODE	DESCRIPTION	IMAGE	QTY	GROUP	COMMENTS

