

# PUBLIC SCHOOL - GENERAL LEARNING SPACE HUB

GLS-PS101

Hub Layouts + Room Data Sheets

**GUIDANCE MATERIAL FOR INFORMATION ONLY**

**DRAFT RELEASE - JULY 2025**



# SCHOOL INFRASTRUCTURE PATTERN BOOK REVIT MODEL

## PUBLIC SCHOOL - GENERAL LEARNING SPACE HUB

### GLS-PS101

#### REVIT VERSION

# 2024

#### DISCLAIMER – EFSG 2025

THE EDUCATIONAL FACILITIES STANDARDS AND GUIDELINES (EFSG) 2025 FORM PART OF THE CONTRACTUAL REQUIREMENTS FOR THE DESIGN AND DELIVERY OF SCHOOL INFRASTRUCTURE PROJECTS COMMISSIONED BY SCHOOL INFRASTRUCTURE NSW (SINSW). ADHERENCE TO THE EFSG IS MANDATORY AND CONSTITUTES A LEGAL OBLIGATION FOR ALL ENGAGED PARTIES.

EFSG 2025 SETS OUT THE DESIGN INTENT, SPATIAL AND FUNCTIONAL REQUIREMENTS, AND STANDARDISED DESIGN COMPONENTS NECESSARY TO GUIDE THE CONSISTENT, EQUITABLE, AND HIGH-QUALITY DEVELOPMENT OF EDUCATIONAL FACILITIES ACROSS NSW. WHILE COMPREHENSIVE IN SCOPE, THE EFSG IS NOT EXHAUSTIVE. PROJECT TEAMS MUST APPLY PROFESSIONAL JUDGMENT IN ADDRESSING SPECIFIC PROJECT NEEDS, SITE CONDITIONS, AND APPLICABLE STATUTORY AND REGULATORY OBLIGATIONS.

WHILE THE MOST CURRENT VERSION OF THE EFSG IS GENERALLY THE AUTHORITATIVE REFERENCE, THE APPLICABLE VERSION FOR ANY GIVEN PROJECT MAY BE DETERMINED BY THE DATE ON WHICH THE PROJECT'S BUSINESS CASE WAS APPROVED. IT IS THE RESPONSIBILITY OF PROJECT TEAMS TO CONFIRM THE RELEVANT VERSION WITH SINSW AND SEEK CLARIFICATION WHERE UNCERTAINTY EXISTS.

THE EFSG ADOPTS A 'LIVE LEARNING' MODEL, AND UPDATES MAY BE ISSUED THROUGH FUTURE ANNUAL RELEASES TO REFLECT EVOLVING PRIORITIES, SECTOR FEEDBACK, AND LESSONS LEARNED. COMPONENTS SUCH AS THE PATTERN BOOK ARE ITERATIVE TOOLS AND WILL CONTINUE TO BE DEVELOPED OVER TIME.

SINSW ACCEPTS NO LIABILITY FOR ANY LOSS, DAMAGE, OR CLAIM ARISING FROM THE MISAPPLICATION, OUTDATED REFERENCING, OR MISINTERPRETATION OF EFSG CONTENT. USERS MUST ENSURE THEY ARE WORKING FROM THE CORRECT VERSION AND CONFIRM ANY AMBIGUITIES DIRECTLY WITH SINSW.

#### MODEL & DRAWING NOTES

THE DATA CAPTURED IN THIS DOCUMENT IS UNDER DEVELOPMENT AND REVIEW BY SINSW.

THIS DOCUMENT IS TO BE READ IN CONJUNCTION WITH:

- EFSG PART B – FUNCTIONAL DESIGN BRIEF
- EFSG PART C – DESIGN COMPONENTS AND DATA SHEETS
- EFSG PART D – DESIGN AND TECHNICAL STANDARDS
- NATIONAL CONSTRUCTION CODE (NCC)
- AUSTRALIAN STANDARDS
- NATSPEC

ANY DISCREPANCY IN THE INFORMATION WITHIN THIS DOCUMENT AND/OR ANY OTHER DOCUMENT NEEDS TO BE BROUGHT TO THE ATTENTION OF SINSW.

1. HUB LAYOUTS OF DIFFERENT SIZES ARE FOR FUTURE RELEASE - USE THIS DOCUMENT AND THE ROOM DATA SHEETS TO DEVELOP SMALLER OR LARGER HUB LAYOUTS BASED ON SOAS PROVIDED IN PART B.
2. NOT ALL ROOMS ARE ELEVATED. REFER TO A SAME TYPE ELEVATED ROOM AND RDS FOR FURTHER INFORMATION/GUIDANCE .
3. ALL CLEARANCES (OPERATIONAL AND SAFETY) ARE INDICATIVE ONLY AND COMPLIANCE IS TO BE CONFIRMED. THIS INCLUDES SAFETY ZONES AROUND MACHINES AND SPECIFICATIONS OF CONTRACTED MACHINERY AND SPECIALISED EQUIPMENT. CONTRACTED EQUIPMENT SPECIFICATION IS MANAGED BY THE COMPLIANCE AND ENVIRONMENT TEAM AND THE ESIS - EQUIPMENT SAFETY IN SCHOOLS REGISTER.
4. WALL THICKNESSES ARE INDICATIVE ONLY. STRUCTURAL REQUIREMENTS AND ALL SERVICES INSTALLATIONS IN THE PROPOSED LOCATIONS NEED TO BE COORDINATED.
5. AREAS ARE SHOWN IN TWO WAYS:
  - XX.XM<sup>2</sup> - REFERS TO THE STANDARD BUILDING GRID (7.5M X 9M) INCLUDING ALL STRUCTURES, SERVICES, BUILD-INS ETC.
  - (XX.XM<sup>2</sup>) - REFERS TO USABLE AREA TO THE INTERNAL FACE OF WALL BASED ON AN AGNOSTIC ENVELOPE
6. ALL FFE IS UNDER DEVELOPMENT AND PRODUCT IMAGERY IS INDICATIVE ONLY.
7. BLOCK OUT BLINDS ARE REQUIRED TO EXTERNAL WINDOWS & EXTERNAL GLAZED DOORS ON GF AND WHERE ADJACENT TO A WALKWAY.
8. SIGNAGE IS UNDER DEVELOPMENT AND INDICATIVE ONLY. 2 TYPES ARE REQUIRED FOR EACH SPACE: FIXED ROOM IDENTIFICATION SIGN (AMS DOOR SIGN) & VARIABLE ROOM IDENTIFICATION SYSTEM.
9. ALSO REFER TO:
  - AUDIO VISUAL SPECIFICATION AT THE TIME OF TENDER. CAPTURED ON DRAWINGS FOR DESIGN LOCATION INTENT ONLY.
  - HEARING AUGMENTATION STRATEGY. ANY MENTION IN THE ROOM DATA SHEETS IS INDICATIVE ONLY AND SHOULD BE VERIFIED WITH THE PRINCIPAL.
  - GAS PROVISION STRATEGY FOR INTERIM MEASURES.
10. GRAPHIC REPRESENTATION OF EXTERNAL FACADE ELEMENTS, IN BOTH PLAN AND ELEVATION ARE INDICATIVE ONLY AND TO BE RESOLVED BY PROJECT TEAMS.

P02	SINSW	2025/07/01	ISSUED FOR EFSG 2025r0
P01	NG	2025/03/21	FOR INFORMATION
H	NG	2025/03/17	FOR INFORMATION
G	CHS	2025/02/05	REVISED ICT COMMENTS
<b>REV</b>	<b>BY</b>	<b>DATE</b>	<b>DESCRIPTION</b>

# Hub Layout and Room Data Sheets

Public School

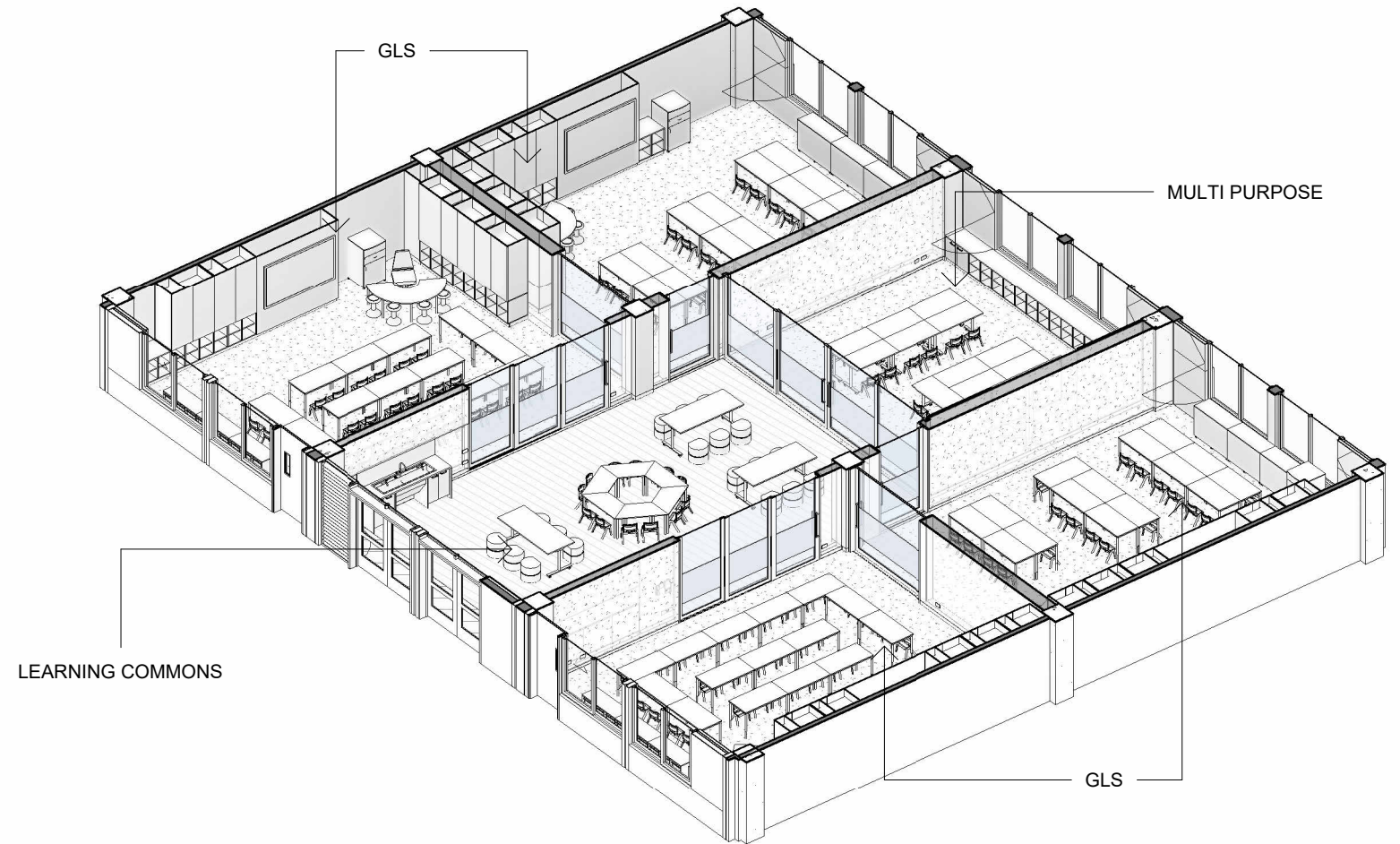
## General Learning Space (GLS HUB)

### General Information

<b>Description</b>	General Learning Spaces are a cluster of adaptable learning spaces designed for general educational activities, including specialist programs.
<b>Location</b>	Refer to Patternbook. GLS hubs can be stacked or be located in adjacent building blocks, subject to project specifics.
<b>Hours of Operation</b>	School hours; out-of-school hour use to be agreed with the school.
<b>Functional Requirements</b>	Arranged in clusters to accommodate a whole year on one building level at the minimum.
<b>Critical Relationships</b>	Staff, Amenities
<b>Occupancy/Capacity/Area</b>	Max 30 students per GLS and 1x teacher (potentially 1 or more SLSO/s)/ Hub Area: 3 bays = 405 sqm based on the standardised building grid of 7.5 x 9m (including all services, structure and internal building elements). Refer to area schedule & general arrangement floor plans.
<b>Design Requirement</b>	<p>The total number of GLS provided is to be determined based on enrolment projections. The GLS hub provides four areas that support flexible use of space to enable a variety of learning and social activities.</p> <ul style="list-style-type: none"> <li>The primary function of the GLS is to enable explicit instruction of students along with independent and group learning.</li> <li>The Learning Common (LC) offers more opportunities for students to collaborate and work with diverse groups of peers.</li> <li>Practical Activity Area (PAA) supports opportunities for practical 'hands on' activities within the LC.</li> <li>The Multipurpose Space (MPS) can be used by small or mid-sized groups of students working either with staff or independently. The MPS may also be used to support student readiness to learn.</li> <li>The hub must retain a level of flexibility in its design to enable agile and responsive use of affordances by teachers to meet student learning needs. The hub must operate with close relationships and visual connections between the variety of spaces.</li> </ul>
<b>Hub arrangement</b>	4 x GLS. 1 x Learning Commons. 1 x Multipurpose Space
<b>Qualitative Design Objectives</b>	

### Services

<b>General Requirements</b>	NOTE: Further co-ordination with Services Consultants is required.
<b>Cooling/Heating</b>	Required
<b>Ventilation</b>	Natural Ventilation via Facade Panel and ceiling fans
<b>Water/Drainage</b>	2x PAA within LC
<b>Sprinklers</b>	To be co-ordinated with services consultant.
<b>Smoke Extract</b>	To be co-ordinated with services consultant.
<b>Lighting</b>	Yes
<b>Power</b>	Yes
<b>ICT/Commns/Data</b>	Yes
<b>WIFI/Telephone Access Point</b>	Yes
<b>Hearing Augmentation</b>	Refer to SINSW Hearing Augmentation strategy.
<b>Special Requirements</b>	Access Control / Door Release / Fire Alarm - under development



FOR IMPLEMENTATION/USE OF THE SI PATTERN BOOK, NOTE THE FOLLOWING:

INTELLECTUAL PROPERTY  
Refer to: SI Pattern Book - Introduction, Copyright and Disclaimer.

AGREEMENT OF USE  
Refer to: SI Pattern Book - Introduction, Copyright and Disclaimer.

SINSW CONTACT  
Refer to: SI Pattern Book - Introduction, Copyright and Disclaimer.

### DRAWING NOTES

REV	BY	DATE	DESCRIPTION
A		2024/12/03	FOR INFORMATION
B	CHS	2024/12/11	FOR INFORMATION
C	CHS	2024/12/18	REVISED TITLEBLOCK & DRAWING NUMBER
D	CHS	2025/02/05	REVISED ICT COMMENTS
P01	NG	2025/03/21	FOR INFORMATION
P02	SINSW	2025/07/01	ISSUED FOR EFSG 2025r0

PROJECT NAME  
**PATTERN BOOK**

DRAWING TITLE  
**PS101 - GLS - HUB COVER**

PROJECT NUMBER  
**PXXXXXX**

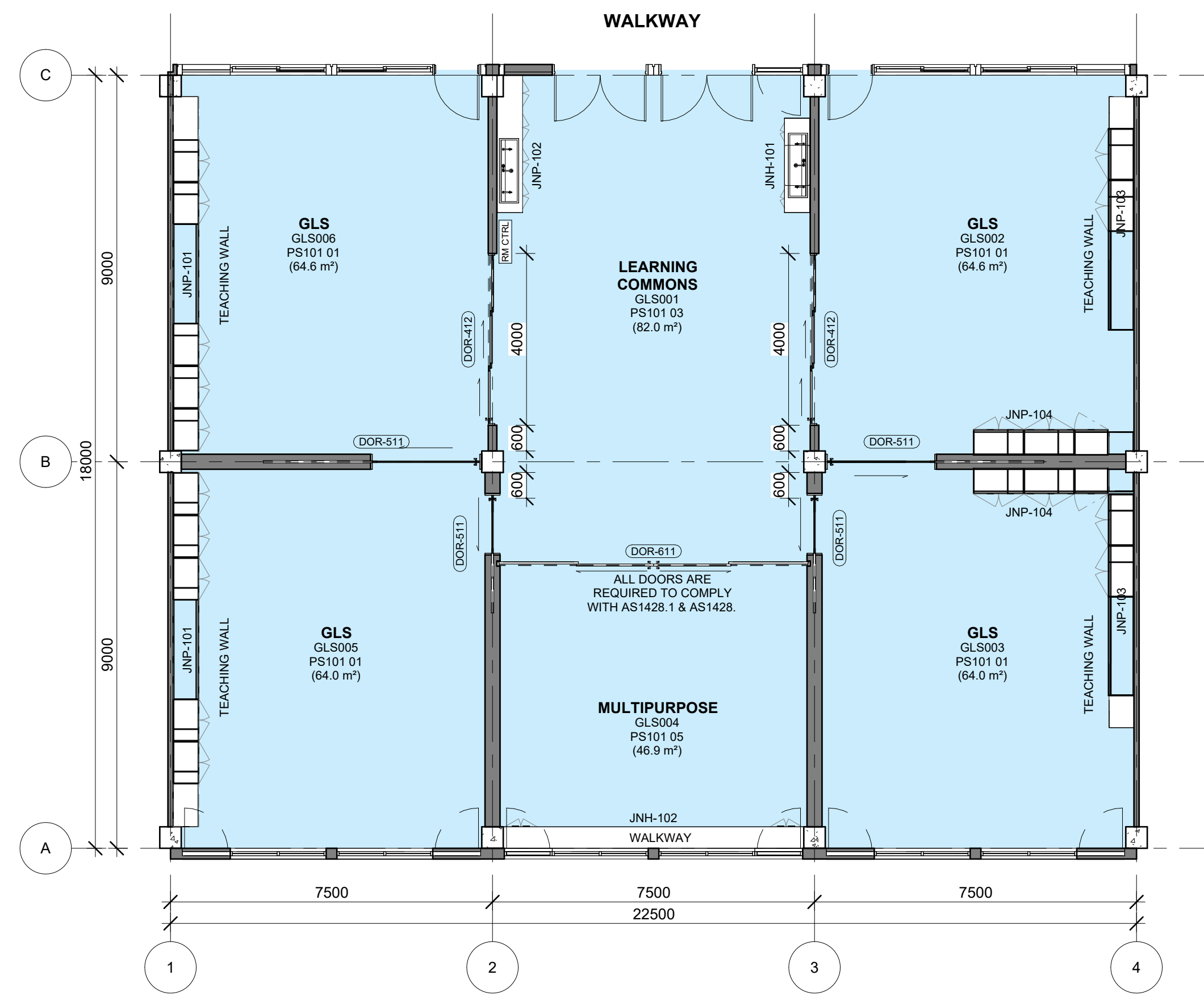
STATUS  
**FOR INFORMATION**

DRW | CHK | APP | DATE  
**2025/07/01**

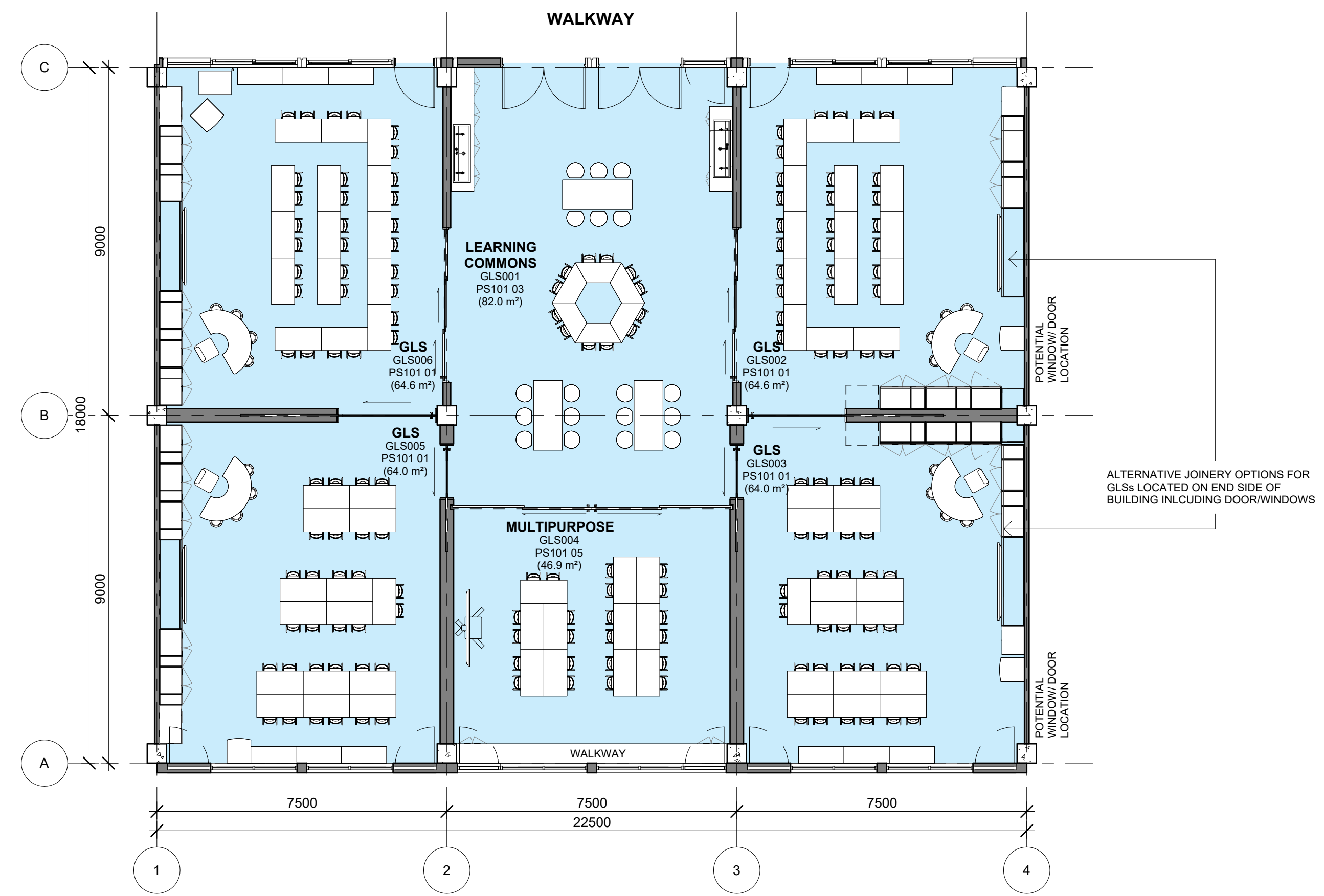
SCALE  
**@A3**

DRAWING NO.  
**PAT-SINSW-GLS-PS101- DR-K-0001**

REV  
**P02**



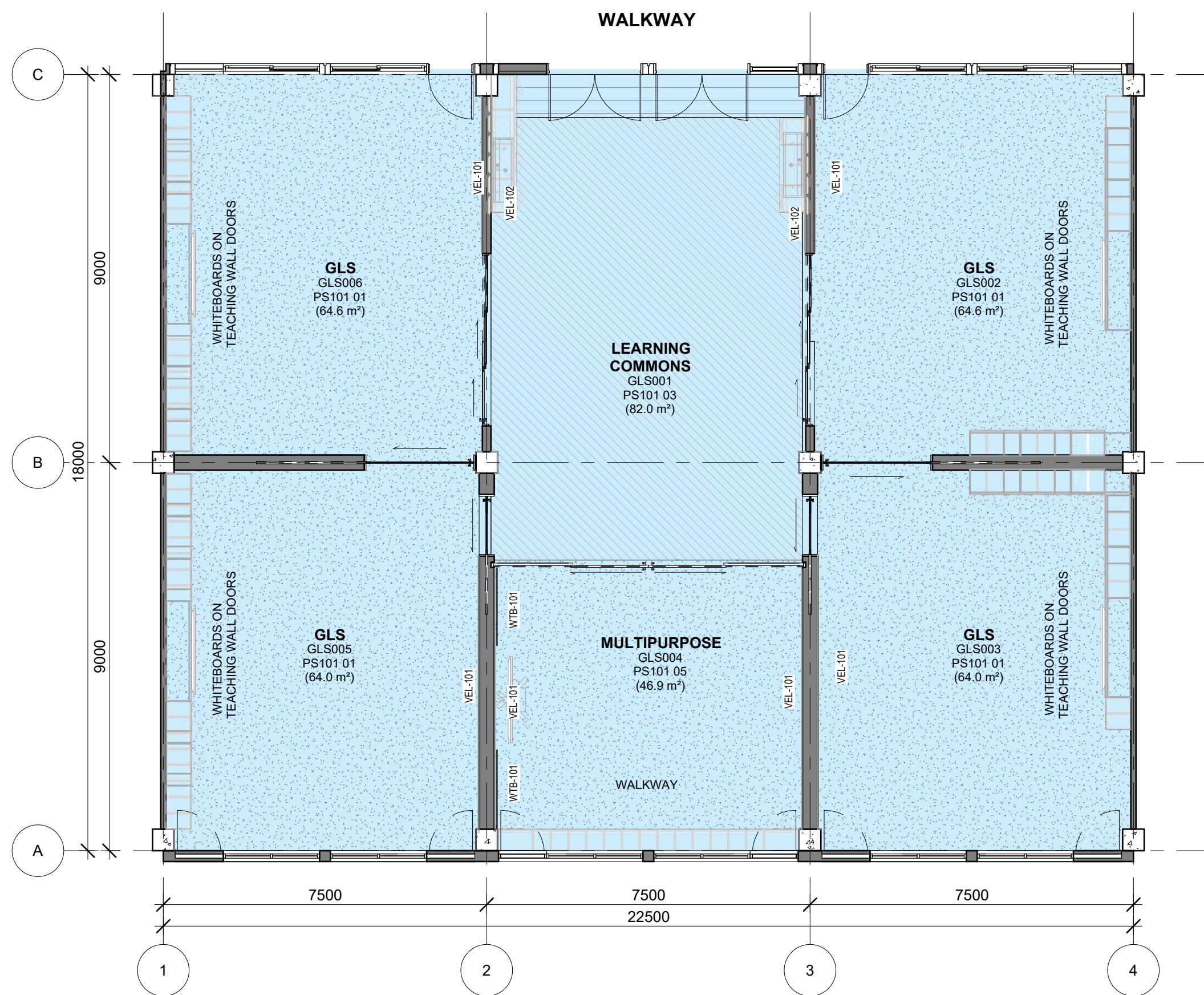
**1** PS - GLS - GA - PLAN  
1 : 100



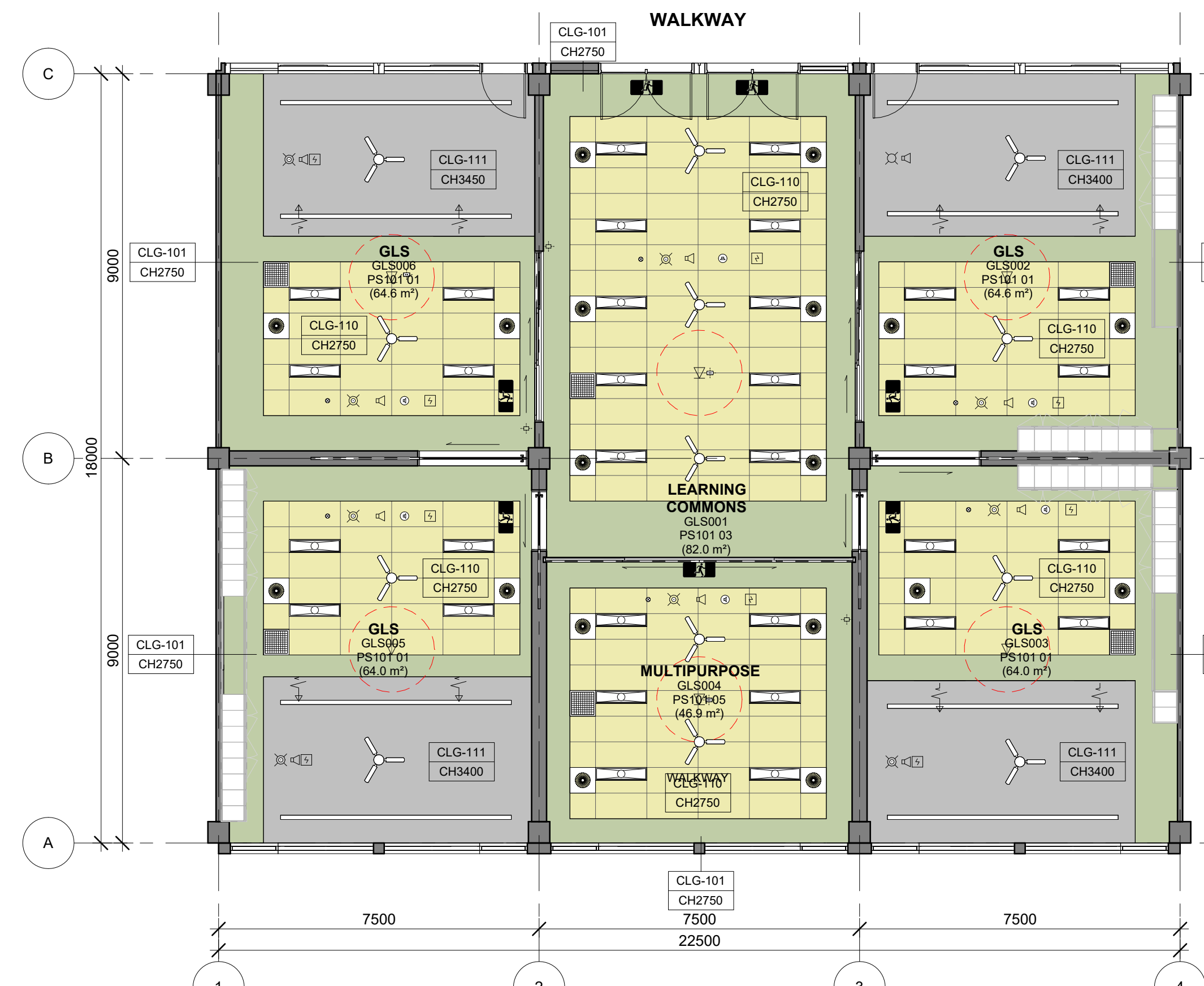
**3** PS - GLS - FFE - PLAN  
1 : 100

NOTE: REFER TO PATTERNBOOK PART C FOR FURNITURE PACKAGE OPTIONS FOR K-2 AND YR 3-6





**2** PS - GLS - FINISHES - PLAN  
1 : 100



**1** PS GLS HUB - RCP  
(Mechanical Strategy Type 1)  
1 : 100

Note: This RCP is an illustration of a design intent only. Project specific services shall be designed to the performance specifications outlined in the Patternbook / EFSG

**FLOOR FINISH**

- CONCRETE
- CPT101 CARPET - TILES
- CPT-150 CARPET - MARINE GRADE
- MAT-101 ENTRY MAT
- RBF-101 RUBBER FLOORING
- RFL-101 RESILIENT FLOORING
- RFL-201 RESILIENT FLOORING - SCIENCE
- TBF-101 TIMBER FLOORING
- TLF-101 TILE FLOORING

**WALL APPLIED FINISH**

- PIN-101 PINBOARD 100mm AFFL - 2750mm AFFL
- PIN-102 PINBOARD 1350mm AFFL - 2750mm AFFL
- PIN-201 PINBOARD 100mm AFFL - 2750mm AFFL
- VEL-101 VELCRO BOARD 100mm AFFL - 2750mm AFFL
- VEL-102 VELCRO BOARD 1350mm AFFL - 2750mm AFFL
- LIN-101 LINOLEUM 100mm AFFL - 2750mm AFFL
- MIR-201 MIRRORS
- SPL-101 LAMINATE SPLASHBACK
- TIP-101 TIMBER PANELS
- TLW-101 TILES
- WTB-101 WHITEBOARDS

NOTE: TO ALL OTHER WALLS, PAINT COLOUR TO BE CONFIRMED

**SYMBOL LEGEND**  
NOTE: REFER TO SERVICES ENGINEER'S DRAWINGS FOR DETAILED INFORMATION. SYMBOLS DRAWN ARE REPRESENTATIONAL ONLY.

**CEILING TAG**

TYPE OF CEILING: NO CEILING, RAKED CEILING, MATCH EXISTING [MTC:EX]

HEIGHT CEILING: CH2700, RAKED

**CEILING TYPE**

- CLG-100: EXPOSED CONCRETE - CLASS 2 FINISH
- CLG-101: SUSPENDED CEILING - STANDARD FLUSH PLASTERBOARD
- CLG-102: SUSPENDED CEILING - STANDARD WATER RESISTANT FLUSH PLASTERBOARD
- CLG-103: SUSPENDED CEILING - ACOUSTIC PERFORATED PLASTERBOARD
- CLG-104: SUSPENDED CEILING - FIRE RATED PLASTERBOARD 60/60/60
- CLG-105: SUSPENDED CEILING - FIRE RATED PLASTERBOARD 120/120/120
- CLG-110: SUSPENDED CEILING - CEILING TILE 1200 x 600
- CLG-111: ACOUSTIC CEILING - DIRECT STICK 12MM
- CLG-112: ACOUSTIC CEILING - DIRECT STICK 24MM
- CLG-120: ACOUSTIC CEILING - WOOD & METAL WORKSHOP
- CLG-200: EXTERNAL FC CEILING
- CLG-220: EXTERNAL PERFORATED FC CEILING
- CLG-230: EXTERNAL FEATURE CEILING
- CLG-310: INTERNAL FEATURE ACOUSTIC PANEL - TYPE 1
- CLG-311: INTERNAL FEATURE ACOUSTIC PANEL - TYPE 2
- CLG-320: INTERNAL FEATURE CEILING

NOTE: AN ACOUSTIC ASSESSMENT AGAINST THE PERFORMANCE SPECIFICATIONS IS REQUIRED PER PROJECT.

**MECHANICAL**

- MEC-101: SUPPLY AIR SWIRL - 350 DIA 600 X 600
- MEC-102: SUPPLY AIR SWIRL - 450 DIA 600 X 600
- MEC-103: KITCHEN EXHAUST GRILLE
- MEC-104: TOILET EXHAUST GRILLE
- MEC-105: RETURN AIR GRILLE
- MEC-106: ACCESS PANEL
- MEC-107: CEILING MOUNTED FAN
- MEC-108: CASSETTE UNIT FCU

**LIGHT FITTINGS**

- ELE-101: SURFACE MOUNTED LINEAR DIFFUSED LIGHT
- ELE-102: RECESSED PANEL LED LIGHT - 600x600
- ELE-103: RECESSED PANEL LED LIGHT - 300x1200
- ELE-104: SURFACE MOUNTED LIGHT
- ELE-105: FEATURE PENDANT LIGHT
- ELE-106: SURFACE MOUNTED BATTEN WITH EMERGENCY LIGHT
- ELE-106: SURFACE MOUNTED BATTEN

NOTE: Assess fixtures type and distribution against strobing effect.

**FIRE DETECTION & WARNING SYSTEM**

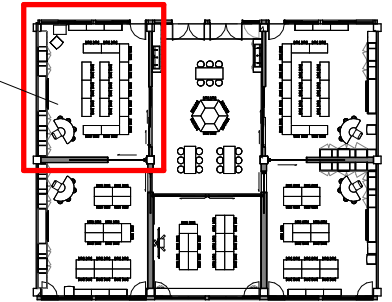
- FIR-101: SMOKE DETECTOR
- FIR-102: SURFACE MOUNTED SMOKE DETECTOR
- FIR-103: CEILING PA SPEAKER
- FIR-104: CEILING FIRE WARNING SPEAKER

**EMERGENCY & EXIT LIGHTING**

- EML-101: LED EMERGENCY LIGHT
- EML-102: LED / FLUORESCENT EMERGENCY EXIT LIGHT FITTING RECESSED
- EML-103: LED / FLUORESCENT EMERGENCY EXIT LIGHT FITTING SURFACE MOUNTED
- MTS-101: MOTION SENSOR
- WAP-101: WIRELESS ACCESS POINT - RED DASHED LINE INDICATES 1m CLEARANCE ZONE
- PIR-101: PIR MOTION DETECTOR
- XT0-102: CEILING MOUNTED DATA OUTLET

NOTE: WAP - WIRELESS ACCESS POINT PROVIDED TO EVERY ROOM UNLESS NOTED OTHERWISE.

Room Name	GLS
Hub Name	PS 101 GENERAL LEARNING SPACES
Facility ID	PS101 01



Item	Room Data	EFSG Link	Comments
Area Function	The primary function of the GLS is to enable explicit instruction of students along with independent and group learning		
Provisional Areas	67 5m <sup>2</sup> measured to building grid Minimum GLS area is 60m <sup>2</sup> clear including internal circulation but excluding storage, internal walls, structure and services		
Number of Occupants	Max 30 students and 1 x teacher (potentially 1 or more SLSO/s)		
Functional Relationship Considerations			
Other Relevant Info/ Gaps			
ESD Category			
Floor & Skirting	Refer to Finishes Plan & Elevation Drawings Skirting: SKT-101	<a href="https://tinyurl.com/EFSG-Finish">https://tinyurl.com/EFSG-Finish</a>	
Ceiling Type	Refer to RCP Drawing	<a href="https://tinyurl.com/EFSG-Ceilings">https://tinyurl.com/EFSG-Ceilings</a>	
Wall	Refer to Finishes Plan & Elevation Drawings Wall strengthening required for application of displays, shelving, etc	<a href="https://tinyurl.com/EFSG-Walls">https://tinyurl.com/EFSG-Walls</a>	
Doors	Refer to Pattern Book	<a href="https://tinyurl.com/EFSG-Doors">https://tinyurl.com/EFSG-Doors</a>	
Windows	Refer to Pattern Book	<a href="https://tinyurl.com/EFSG-Windows">https://tinyurl.com/EFSG-Windows</a>	
Acoustic	Refer to EFSG and relevant standards/ codes Note: Further consultant input required	<a href="https://tinyurl.com/EFSG-Acoustic">https://tinyurl.com/EFSG-Acoustic</a>	
Ventilation	Refer to Pattern Book	<a href="https://tinyurl.com/EFSG-Ventilation">https://tinyurl.com/EFSG-Ventilation</a>	
Light	DAYLIGHT: Access to natural light required / BROWN OUT: Space requires glare reducing brown out capabilities to all windows	<a href="https://tinyurl.com/EFSG-Lighting">https://tinyurl.com/EFSG-Lighting</a>	
Illumination	LUX LEVEL: 240 lux / LIGHTING CONTROL: N/A	<a href="https://tinyurl.com/EFSG-Illumination">https://tinyurl.com/EFSG-Illumination</a>	
Cooling	FAN: Required / COOLING: Required	<a href="https://tinyurl.com/EFSG-Cooling">https://tinyurl.com/EFSG-Cooling</a>	
Heating	HEATING: Required	<a href="https://tinyurl.com/EFSG-Heating">https://tinyurl.com/EFSG-Heating</a>	
Gas	NIL	<a href="https://tinyurl.com/EFSG-Gas">https://tinyurl.com/EFSG-Gas</a>	
ICT	LOCATION/SERVICE: (CONFIGURATION, INSTALLATION HEIGHT, USAGE) ROOM: DAT-201 + GPO-201, 300mm, General usage AV: DAT-201 + GPO-201, MLD-105, Standard MLD layout, MLD, Mini PC, Hearing augmentation, spare WAP: DAT-202, WAP-102, Ceiling centrally positioned Wireless point PHONE: DAT-101 and TEL-101 as per standard layout, located with room controls BMS/IOT: DAT-101, 2400-3000mm above room controls, Provision for future use HEARING: Allowed for with AV CHARGE STATION: GPO-201 CLEANER/UTILITY: GPO-101, 300mm, At entry door near room controls	<a href="https://tinyurl.com/EFSG-Electrical">https://tinyurl.com/EFSG-Electrical</a>  <a href="https://tinyurl.com/EFSG-Comms">https://tinyurl.com/EFSG-Comms</a>	
Security	SECURITY LEVEL: Category A - Low Security Level applies	<a href="https://tinyurl.com/EFSG-Security">https://tinyurl.com/EFSG-Security</a>	
Water	N/A	<a href="https://tinyurl.com/EFSG-Water">https://tinyurl.com/EFSG-Water</a>	
Drainage	N/A	<a href="https://tinyurl.com/EFSG-Drainage">https://tinyurl.com/EFSG-Drainage</a>	
Fire Protection	FIRE EXTINGUISHER/ BLANKET: Portable fire extinguisher required where Fire Hose Reel coverage not provided to comply with NCC / FIRE HOSE REEL: As required to comply with NCC	<a href="https://tinyurl.com/EFSG-FireProtection">https://tinyurl.com/EFSG-FireProtection</a>	
Keying	KEYING GENERAL: Keyed alike - Learning Facility / MASTER KEYING: Master keyed - Learning Spaces (LS)	<a href="https://tinyurl.com/EFSG-Keying">https://tinyurl.com/EFSG-Keying</a>	
Signage	AMS room identification door signage ("GLS" - number of room sequential within block) Wayfinding signage in accordance with AS 1428 4	<a href="https://tinyurl.com/EFSG-Signage">https://tinyurl.com/EFSG-Signage</a>	



www.schoolinfrastructure.nsw.gov.au

FOR IMPLEMENTATION/USE OF THE SI PATTERN BOOK, NOTE THE FOLLOWING:  
INTELLECTUAL PROPERTY  
Refer to: SI Pattern Book - Introduction, Copyright and Disclaimer.  
AGREEMENT OF USE  
Refer to: SI Pattern Book - Introduction, Copyright and Disclaimer.  
SINSW CONTACT  
Refer to: SI Pattern Book - Introduction, Copyright and Disclaimer.

DRAWING NOTES

REV	BY	DATE	DESCRIPTION
A	CHS	2024/10/14	FOR INFORMATION
B	CHS	2024/10/22	FOR INFORMATION
C		2024/12/03	FOR INFORMATION
D	CHS	2024/12/11	FOR INFORMATION
E	CHS	2024/12/18	REVISED TITLEBLOCK & DRAWING NUMBER
F	CHS	2025/02/05	REVISED ICT COMMENTS
P01	NG	2025/03/21	FOR INFORMATION
P02	SINSW	2025/07/01	ISSUED FOR EFSG 2025r0

PROJECT NAME  
**PATTERN BOOK**

DRAWING TITLE  
**PS101.01 - GLS - RDS**

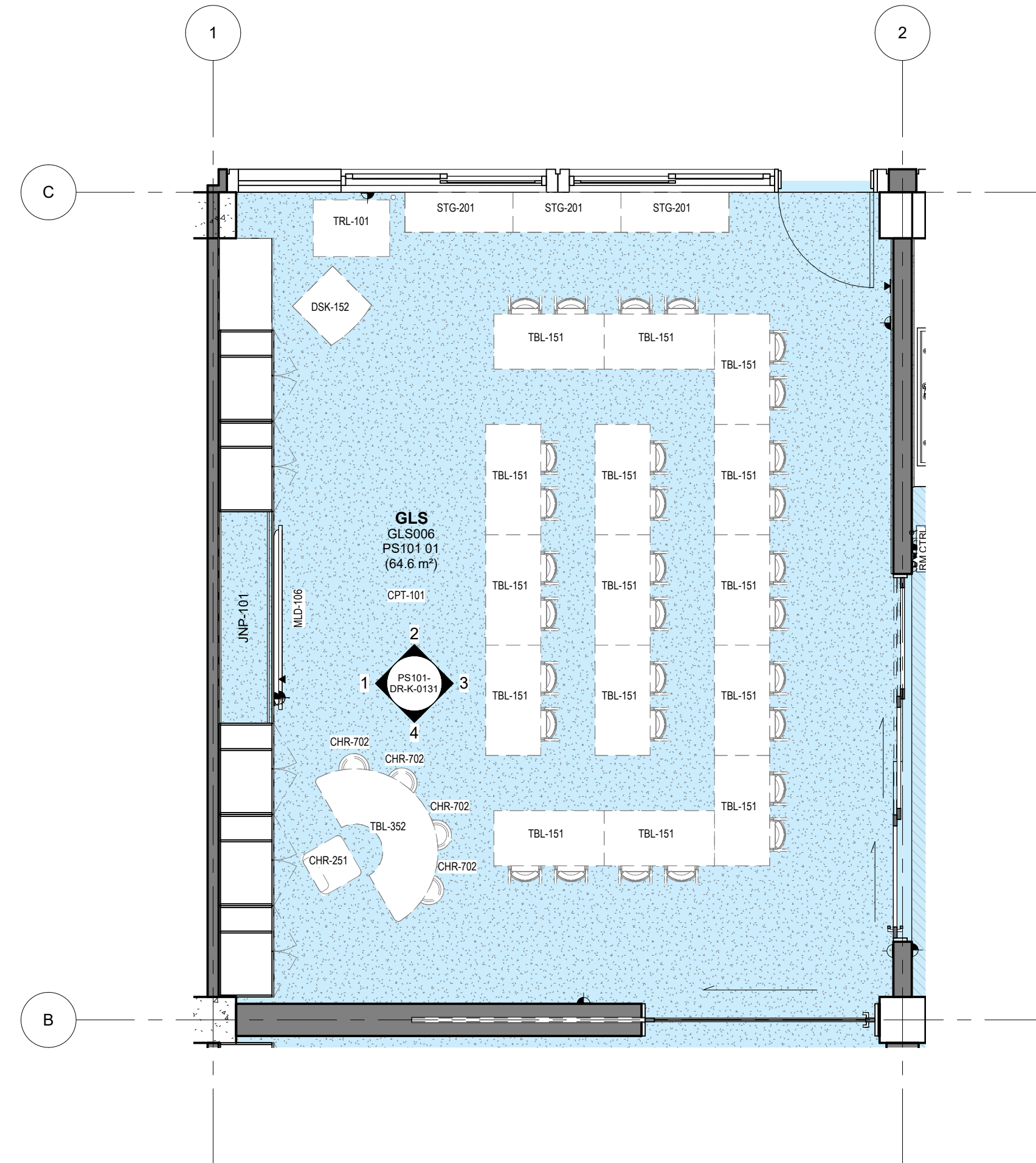
PROJECT NUMBER  
**PXXXXXX**

STATUS  
**FOR INFORMATION**

DRW	CHK	APP	DATE	SCALE
			2025/07/01	1 : 500 @A3

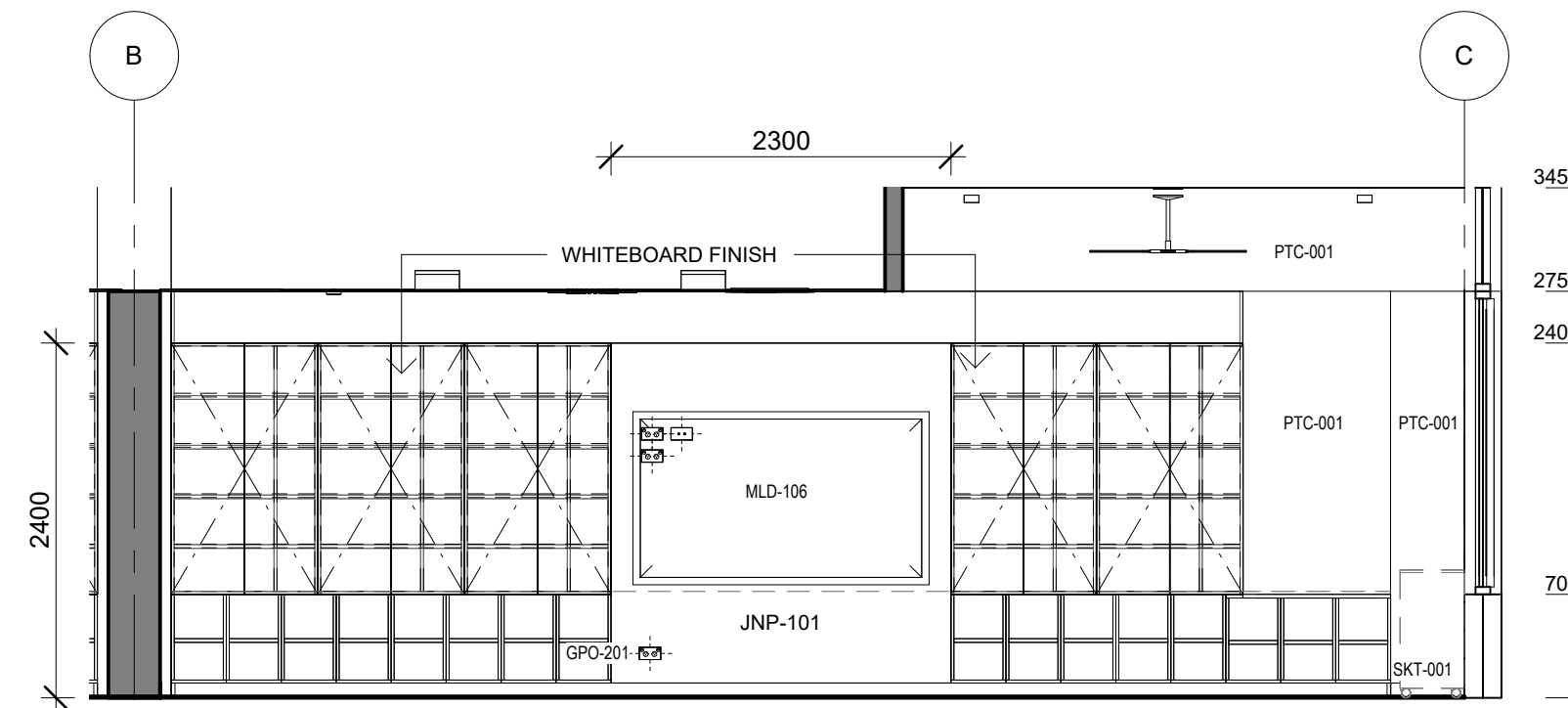
DRAWING NO.  
**PAT-SINSW-GLS-PS101- DR-K-0111**

REV  
**P02**

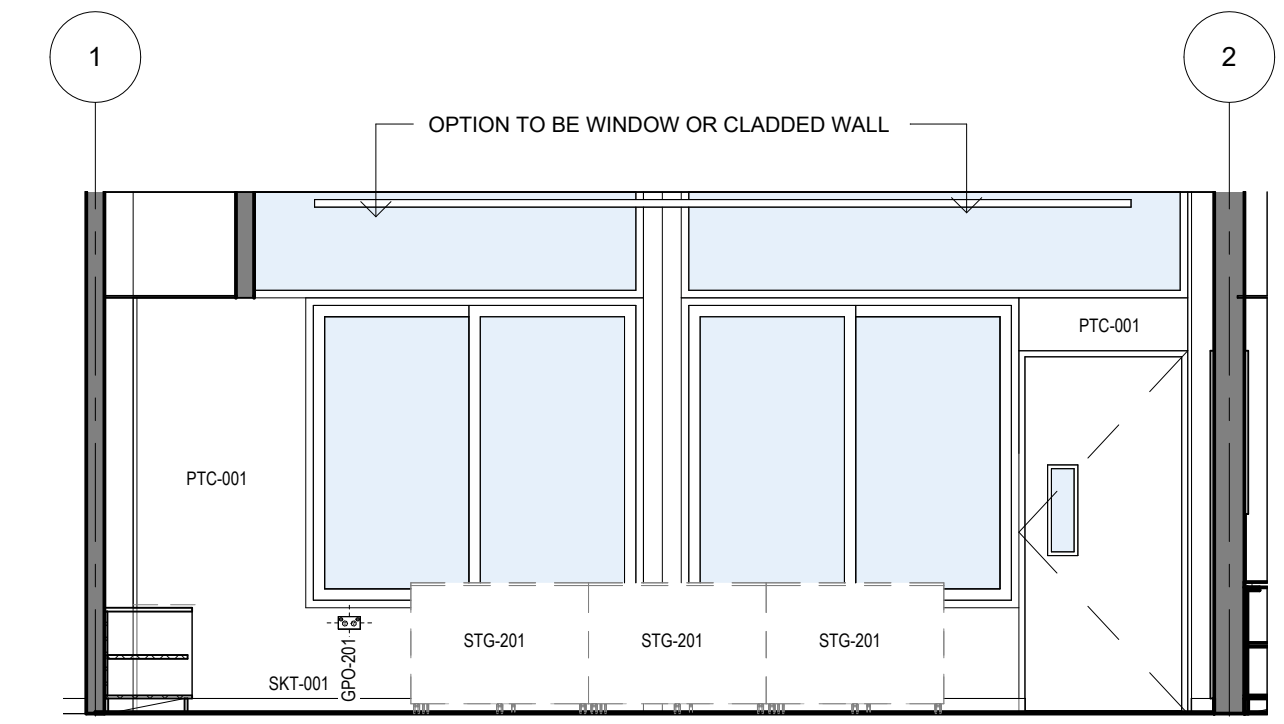


**0 PS - GLS - TYPICAL GLS - FFE PLAN**  
1 : 50

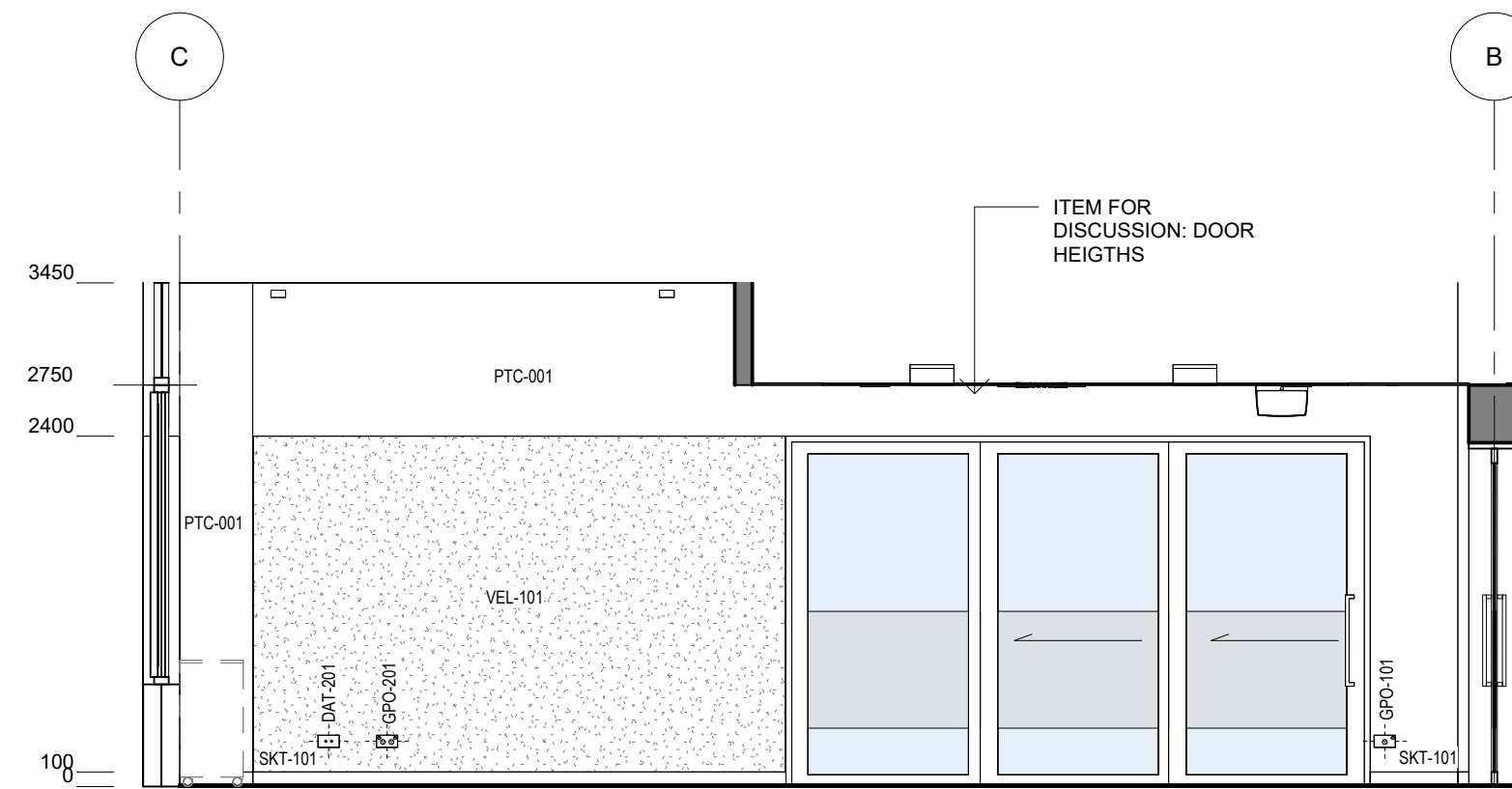
PS GLS - POWER & DATA SCHEDULE		
CODE	DESCRIPTION	QTY
DAT-201	DATA OUTLET - Double - Wall Mount	1
GPO-201	GPO - Double - Wall Mount	2
MLD-206	MULTI LEARNING DISPLAY - Wall Mounted, Fixed height - Type 6	1



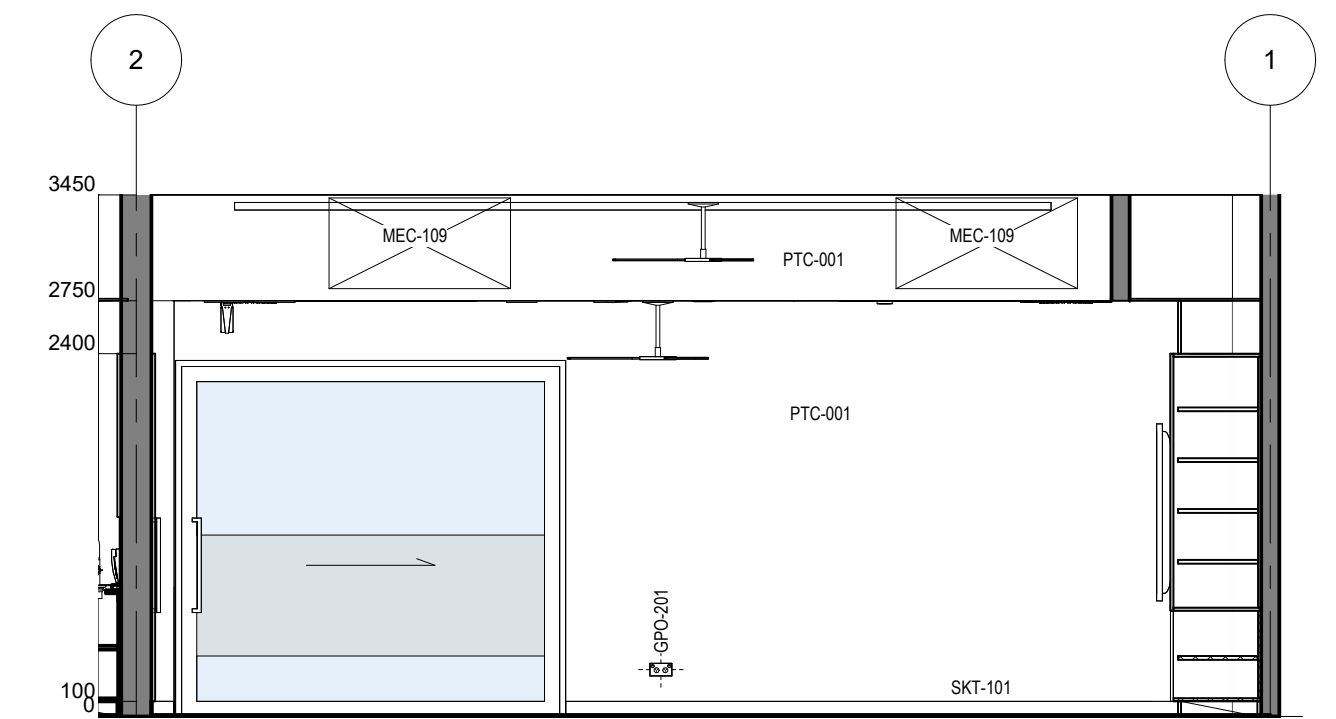
**1 PS - GLS - ELEVATION**  
1 : 50



**2 PS - GLS - ELEVATION**  
1 : 50



**3 PS - GLS - ELEVATION**  
1 : 50



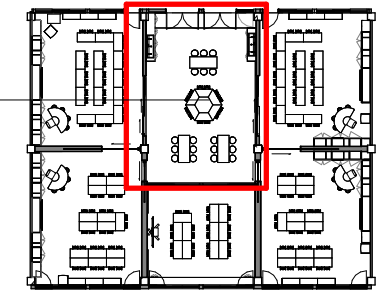
**4 PS - GLS - ELEVATION**  
1 : 50

PS GLS - FFE SCHEDULE					
CODE	DESCRIPTION	IMAGE	QTY	GROUP	COMMENTS
CFA-101	FLOOR ANCHOR - Cart		1	1	
CHR-101	CHAIR - Student - PS - Stackable - Early Stage 1		30	2	Chair available in different sizes as per stage
CHR-251	CHAIR - Task - Staff		1	2	
CHR-702	CHAIR - Active		4	2	

PS GLS - FFE SCHEDULE					
CODE	DESCRIPTION	IMAGE	QTY	GROUP	COMMENTS
DSK-152	DESK - Teacher - PS - Mobile		1	2	
MLD-106	MULTI LEARNING DISPLAY - Wall Mounted - Height Adjustable - Type 6		1	1	
STG-201	STORAGE - Tote tray		3	2	Commercial grade castors with lockable option
TBL-151	TABLE - Rectangular - Height Adjustable - 1200W x 600D		15	2	Writeable table top



Room Name	LEARNING COMMONS
Hub Name	PS 101 GENERAL LEARNING SPACES
Facility ID	PS101 03



Item	Room Data	EFSG Link	Comments
Area Function	The LC offers more opportunities for students to collaborate and work with diverse groups of peers, to be directly accessible by 4 GLS		
Provisional Areas	110m <sup>2</sup> measured to building grid, including area for PAA		
Number of Occupants	up to 120 people standing (ie up to 4 classes) including teachers + SLSOs		
Functional Relationship Considerations			
Other Relevant Info/ Gaps			
ESD Category			
Floor & Skirting	Refer to Finishes Plan & Elevation Drawings Skirting to suit floor finish	<a href="https://tinyurl.com/EFSG-Finish">https://tinyurl.com/EFSG-Finish</a>	
Ceiling Type	Refer to RCP Drawing	<a href="https://tinyurl.com/EFSG-Ceilings">https://tinyurl.com/EFSG-Ceilings</a>	
Wall	Refer to Finishes Plan & Elevation Drawings	<a href="https://tinyurl.com/EFSG-Walls">https://tinyurl.com/EFSG-Walls</a>	
Doors	Refer to Pattern Book	<a href="https://tinyurl.com/EFSG-Doors">https://tinyurl.com/EFSG-Doors</a>	
Windows	Refer to Pattern Book	<a href="https://tinyurl.com/EFSG-Windows">https://tinyurl.com/EFSG-Windows</a>	
Acoustic	Refer to EFSG and relevant standards/ codes Note: Further consultant input required	<a href="https://tinyurl.com/EFSG-Acoustic">https://tinyurl.com/EFSG-Acoustic</a>	
Ventilation	Refer to Pattern Book	<a href="https://tinyurl.com/EFSG-Ventilation">https://tinyurl.com/EFSG-Ventilation</a>	
Light	DAYLIGHT: Access to natural light required / BROWN OUT: Space requires glare reducing brown out capabilities to all windows	<a href="https://tinyurl.com/EFSG-Lighting">https://tinyurl.com/EFSG-Lighting</a>	
Illumination	LUX LEVEL: 240 lux / LIGHTING CONTROL: N/A	<a href="https://tinyurl.com/EFSG-Illumination">https://tinyurl.com/EFSG-Illumination</a>	
Cooling	FAN: Required / COOLING: Required, with operational controls separate to GLS	<a href="https://tinyurl.com/EFSG-Cooling">https://tinyurl.com/EFSG-Cooling</a>	
Heating	HEATING: Required, with operational controls separate to GLS	<a href="https://tinyurl.com/EFSG-Heating">https://tinyurl.com/EFSG-Heating</a>	
Gas	NIL	<a href="https://tinyurl.com/EFSG-Gas">https://tinyurl.com/EFSG-Gas</a>	
ICT (FOR QUANTITIES REFER TO THE ROOM'S POWER & DATA SCHEDULE)	LOCATION/SERVICE: (CONFIGURATION, INSTALLATION HEIGHT, USAGE) ROOM: DAT-201, 300mm with room controls, GPO-201, 300mm, General usage AV: Provision for Mobile device, Power only WAP: DAT-202, WAP-102, Ceiling centrally positioned Wireless point PHONE: N/A BMS/IOT: DAT-101, 2400-3000mm above room controls, Provision for future use HEARING: N/A CLEANER/UTILITY: GPO-101, 300mm, At entry door near room controls	<a href="https://tinyurl.com/EFSG-Electrical">https://tinyurl.com/EFSG-Electrical</a>  <a href="https://tinyurl.com/EFSG-Comms">https://tinyurl.com/EFSG-Comms</a>	
Security	SECURITY LEVEL: Category A - Low Security Level applies	<a href="https://tinyurl.com/EFSG-Security">https://tinyurl.com/EFSG-Security</a>	
Water	COLD WATER: Required to wash trough in PAA	<a href="https://tinyurl.com/EFSG-Water">https://tinyurl.com/EFSG-Water</a>	
Drainage	Required to wash trough in PAA	<a href="https://tinyurl.com/EFSG-Drainage">https://tinyurl.com/EFSG-Drainage</a>	
Fire Protection	FIRE EXTINGUISHER/ BLANKET: Portable fire extinguisher required where Fire Hose Reel coverage not provided to comply with NCC / FIRE HOSE REEL: As required to comply with NCC	<a href="https://tinyurl.com/EFSG-FireProtection">https://tinyurl.com/EFSG-FireProtection</a>	
Keying	KEYING GENERAL: Keyed alike - Learning Facility / MASTER KEYING: Master keyed - Learning Spaces (LS)	<a href="https://tinyurl.com/EFSG-Keying">https://tinyurl.com/EFSG-Keying</a>	
Signage	AMS room identification door signage (variable - number of room sequential within block) Wayfinding signage in accordance with AS 1428 4	<a href="https://tinyurl.com/EFSG-Signage">https://tinyurl.com/EFSG-Signage</a>	

DRAWING NOTES

REV	BY	DATE	DESCRIPTION
A		2024/12/03	FOR INFORMATION
B	CHS	2024/12/11	FOR INFORMATION
C	CHS	2024/12/18	REVISED TITLEBLOCK & DRAWING NUMBER
D	CHS	2025/02/05	REVISED ICT COMMENTS
P01	NG	2025/03/21	FOR INFORMATION
P02	SINSW	2025/07/01	ISSUED FOR EFSG 2025r0

PROJECT NAME  
**PATTERN BOOK**

DRAWING TITLE  
**PS101.03 - GLS LEARNING COMMONS - RDS**

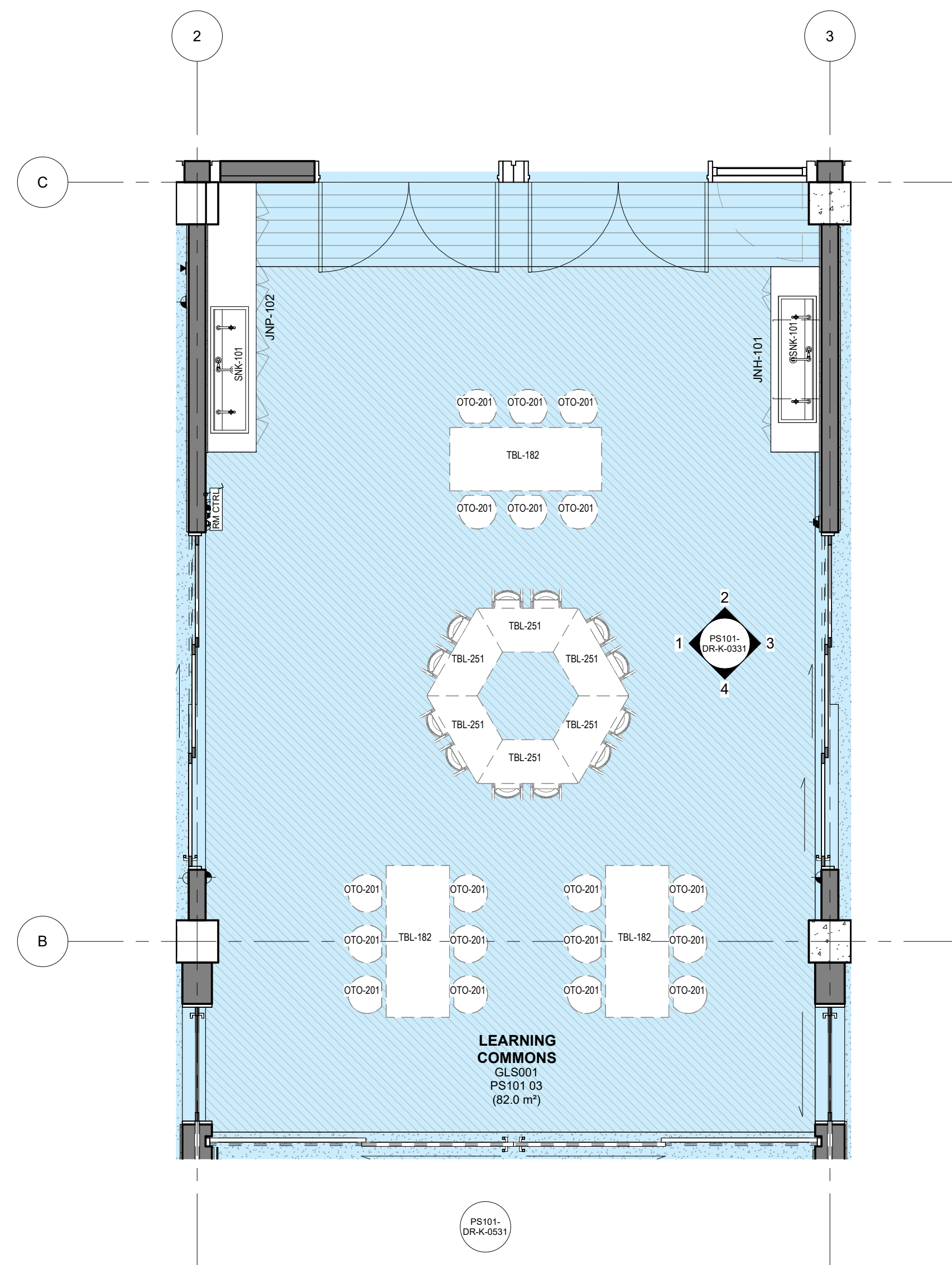
PROJECT NUMBER  
**PXXXXXX**

STATUS  
**FOR INFORMATION**

DRW	CHK	APP	DATE	SCALE
			2025/07/01	1 : 500 @A3

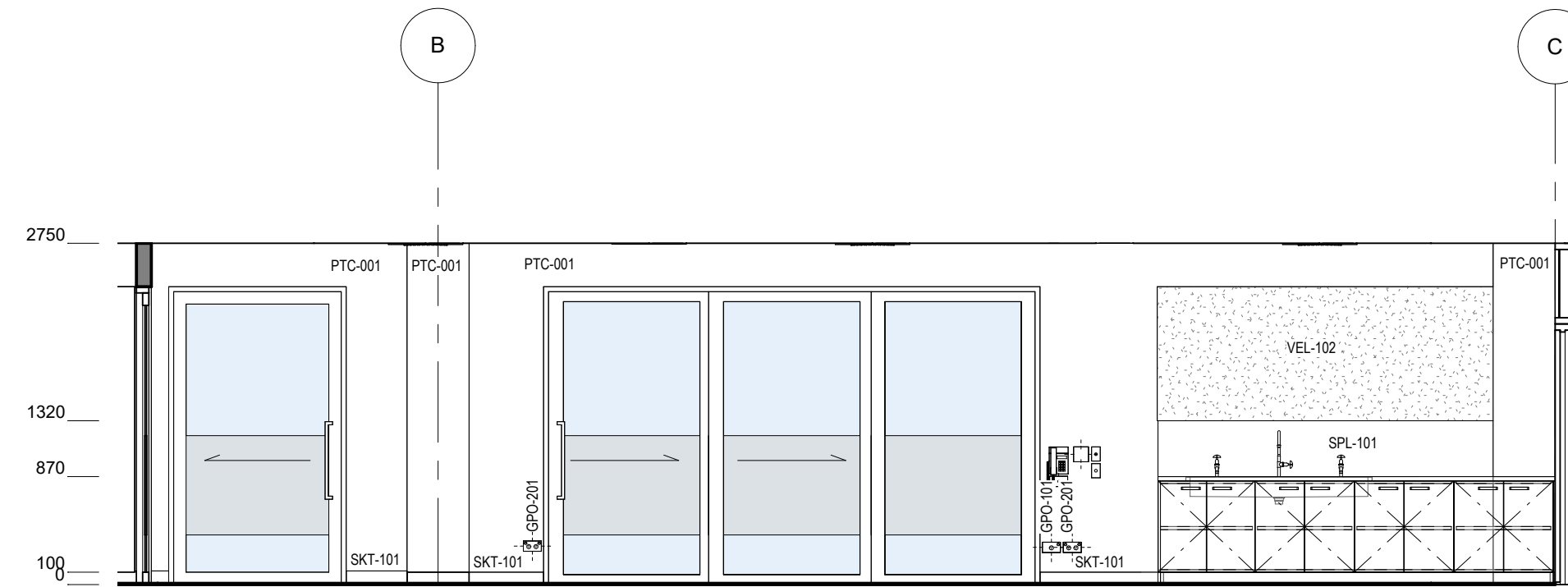
DRAWING NO.  
**PAT-SINSW-GLS-PS101- DR-K-0311**

REV  
**P02**

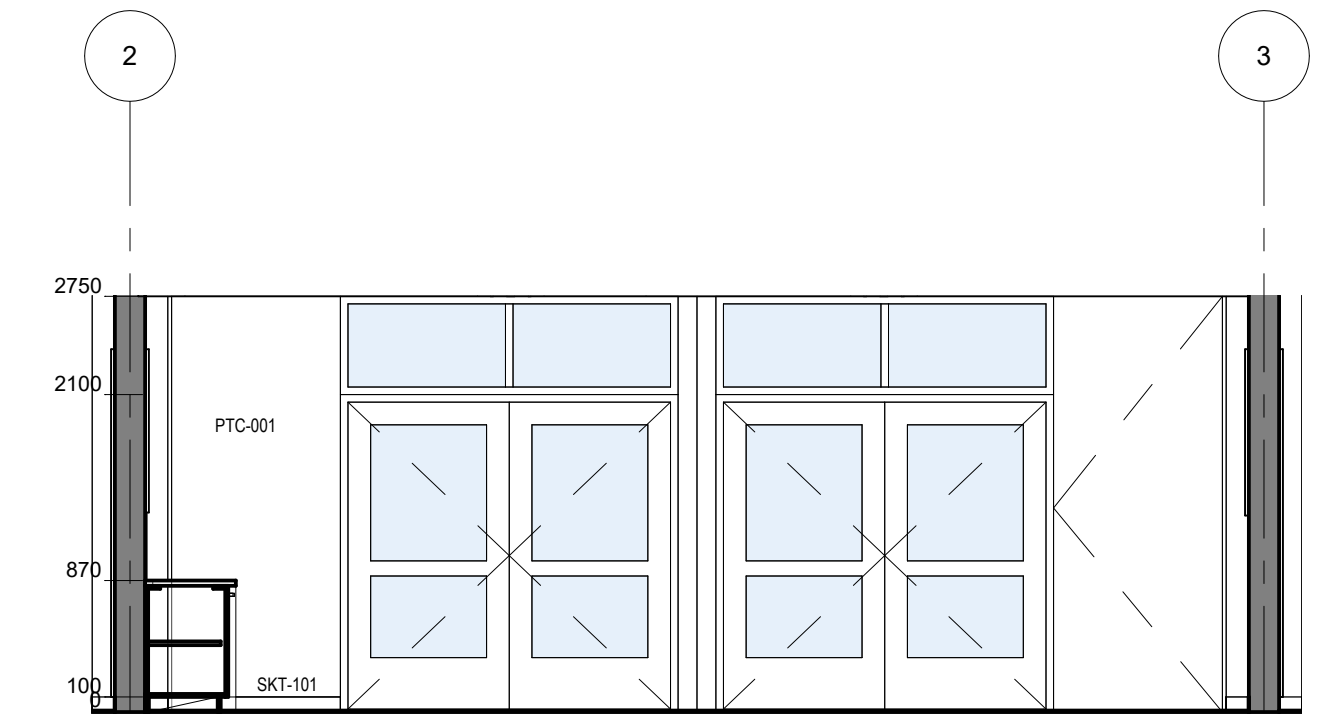


**0 PS - GLS - TYPICAL LEARNING COMMONS - FFE - PLAN**  
1 : 50

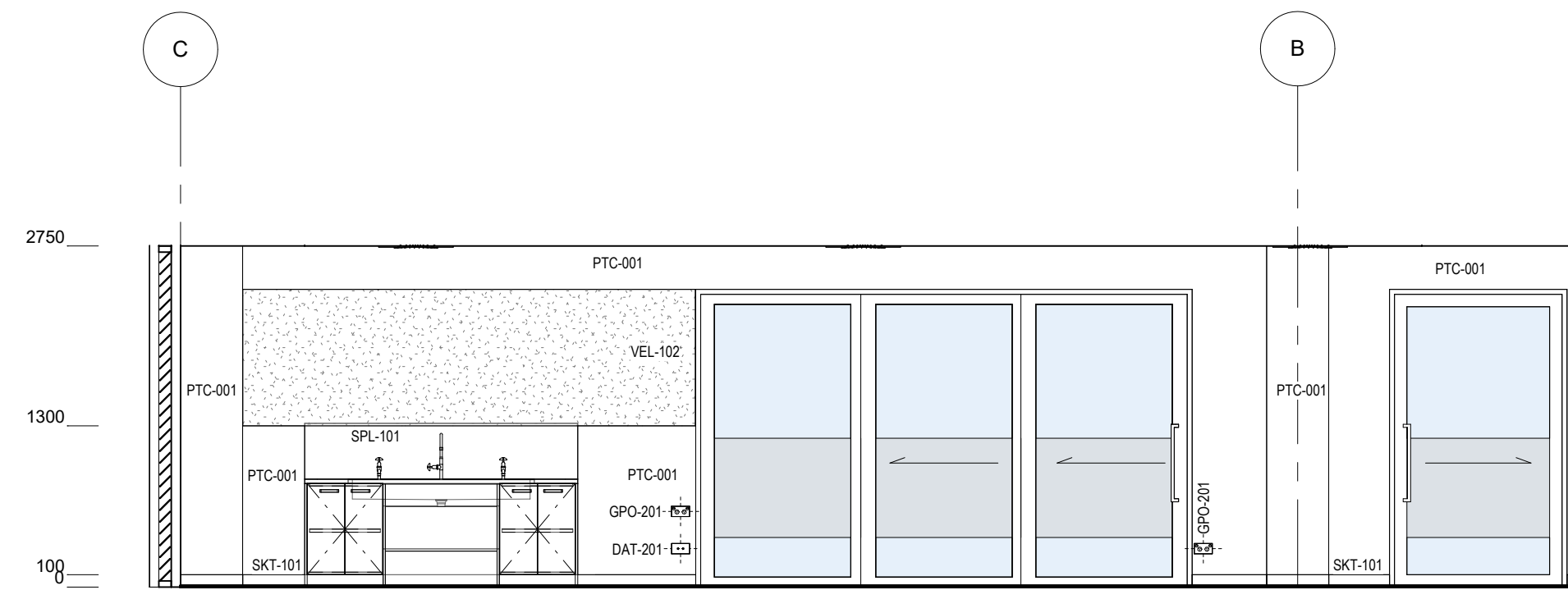
PS LC - POWER & DATA SCHEDULE		
CODE	DESCRIPTION	QTY
DAT-101	DATA OUTLET - Single - Wall Mount	1
DAT-102	DATA OUTLET - Single - Ceiling Mounted	1
DAT-201	DATA OUTLET - Double - Wall Mount	1
DAT-202	DATA OUTLET - Double - Ceiling Mounted	1
GPO-101	GPO - Single Wall Mounted	1
GPO-201	GPO - Double - Wall Mount	4
MEC-201	CONTROL - Mechanical	1
SWF-101	SWITCH - Light	1
SWF-102	SWITCH - Fan	1
TEL-101	TELEPHONE - WALL MOUNTED	1



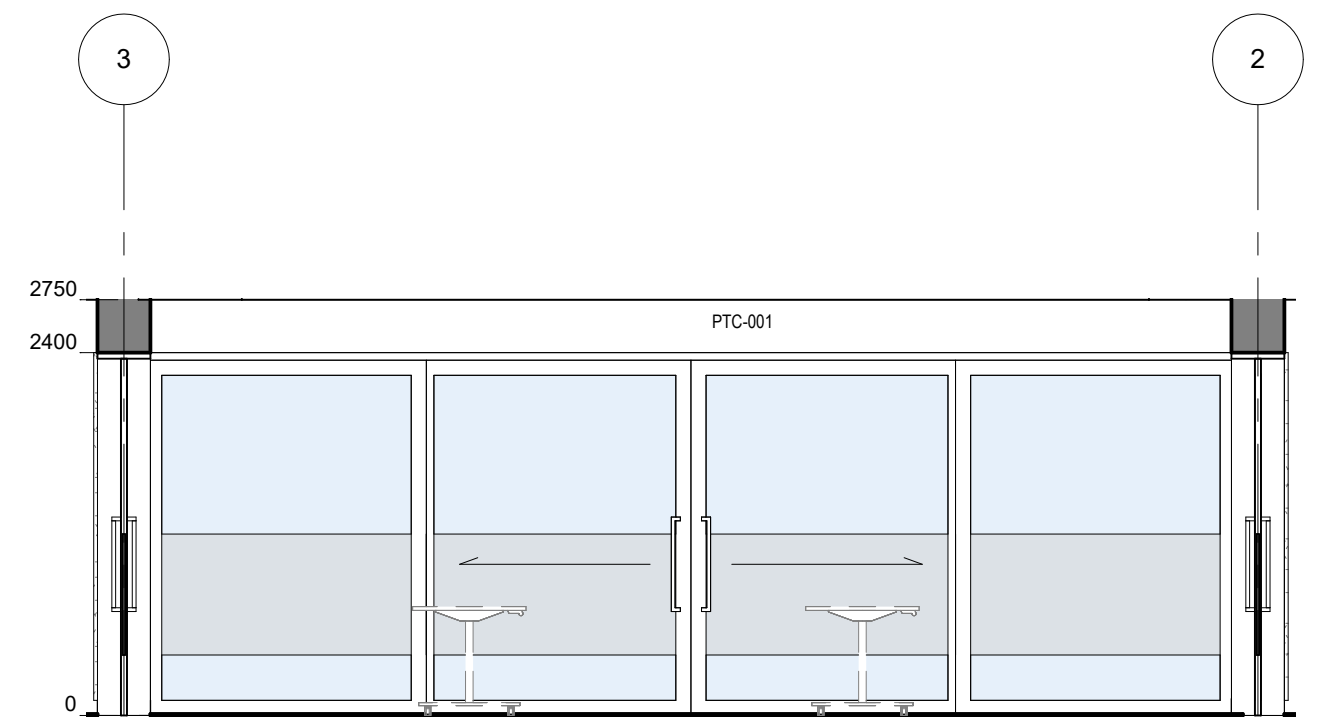
**1 PS - GLS - LEARNING COMMONS ELEVATION**  
1 : 50



**2 PS - GLS - LEARNING COMMONS ELEVATION**  
1 : 50



**3 PS - GLS - LEARNING COMMONS ELEVATION**  
1 : 50

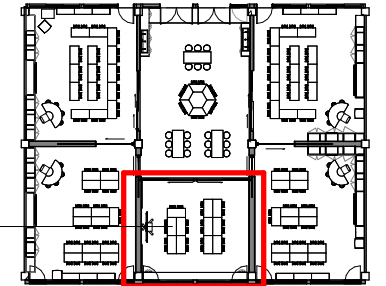


**4 PS - GLS - LEARNING COMMONS ELEVATION**  
1 : 50

PS LEARNING COMMONS - FFE SCHEDULE					
CODE	DESCRIPTION	IMAGE	QTY	GROUP	COMMENTS
	<varies>		1		
			6	1	
CHR-101	CHAIR - Student - PS - Stackable - Early Stage 1		12	2	
OTO-201	OTTOMAN - Student - PS		18	2	
SNK-101	SINK - Washing Trough		2	1	
TBL-182	TABLE - Rectangular - Fliptop - 1800W x 750D x 720H		3	2	
TBL-251	TABLE - Trapezoidal - Student PS - 1200W x 520D x 560H		6	2	



Room Name	MULTIPURPOSE
Hub Name	PS 101 GENERAL LEARNING SPACES
Facility ID	PS101 05



Item	Room Data	EFSG Link	Comments
Area Function	The MPS can be used by small or mid-sized groups of students working either with staff or independently The MPS may also be used to support student readiness to learn		
Provisional Areas	1 MPS area per LC required Included as a room		
Number of Occupants	Small group learning - Varies depending FFE layout and use of room Max occupancy based on 2m <sup>2</sup> / person		
Functional Relationship Considerations			
Other Relevant Info/ Gaps			
ESD Category			
Floor & Skirting	Refer to Finishes Plan & Elevation Drawings Skirting: SKT-101	<a href="https://tinyurl.com/EFSG-Finish">https://tinyurl.com/EFSG-Finish</a>	
Ceiling Type	Refer to RCP Drawing	<a href="https://tinyurl.com/EFSG-Ceilings">https://tinyurl.com/EFSG-Ceilings</a>	
Wall	Refer to Finishes Plan & Elevation Drawings Wall strengthening required for application of displays, shelving, etc	<a href="https://tinyurl.com/EFSG-Walls">https://tinyurl.com/EFSG-Walls</a>	
Doors	Refer to Pattern Book	<a href="https://tinyurl.com/EFSG-Doors">https://tinyurl.com/EFSG-Doors</a>	
Windows	Refer to Pattern Book	<a href="https://tinyurl.com/EFSG-Windows">https://tinyurl.com/EFSG-Windows</a>	
Acoustic	Refer to EFSG and relevant standards/ codes Note: Further consultant input required	<a href="https://tinyurl.com/EFSG-Acoustic">https://tinyurl.com/EFSG-Acoustic</a>	
Ventilation	Refer to Pattern Book	<a href="https://tinyurl.com/EFSG-Ventilation">https://tinyurl.com/EFSG-Ventilation</a>	
Light	DAYLIGHT: Access to natural light required / BROWN OUT: Space requires glare reducing brown out capabilities to all windows	<a href="https://tinyurl.com/EFSG-Lighting">https://tinyurl.com/EFSG-Lighting</a>	
Illumination	LUX LEVEL: 240 lux / LIGHTING CONTROL: N/A	<a href="https://tinyurl.com/EFSG-Illumination">https://tinyurl.com/EFSG-Illumination</a>	
Cooling	FAN: Required / COOLING: Required	<a href="https://tinyurl.com/EFSG-Cooling">https://tinyurl.com/EFSG-Cooling</a>	
Heating	HEATING: Required	<a href="https://tinyurl.com/EFSG-Heating">https://tinyurl.com/EFSG-Heating</a>	
Gas	NIL	<a href="https://tinyurl.com/EFSG-Gas">https://tinyurl.com/EFSG-Gas</a>	
ICT	LOCATION/SERVICE: (CONFIGURATION, INSTALLATION HEIGHT, USAGE) ROOM: DAT-201 + GPO-201, 300mm, General usage AV: DAT-201 + GPO-201, MLD-105, Standard MLD layout, MLD, Mini PC, Hearing augmentation, spare WAP: DAT-202, WAP-102, Ceiling centrally positioned Wireless point PHONE: DAT-101 and TEL-101 as per standard layout, located with room controls BMS/IOT: DAT-101, 2400-3000mm above room controls, Provision for future use HEARING: Allowed for with AV CHARGE STATION: GPO-201 CLEANER/UTILITY: GPO-101, 300mm, At entry door near room controls	<a href="https://tinyurl.com/EFSG-Electrical">https://tinyurl.com/EFSG-Electrical</a>  <a href="https://tinyurl.com/EFSG-Comms">https://tinyurl.com/EFSG-Comms</a>	
Security	SECURITY LEVEL: Category A - Low Security Level applies	<a href="https://tinyurl.com/EFSG-Security">https://tinyurl.com/EFSG-Security</a>	
Water	N/A	<a href="https://tinyurl.com/EFSG-Water">https://tinyurl.com/EFSG-Water</a>	
Drainage	N/A	<a href="https://tinyurl.com/EFSG-Drainage">https://tinyurl.com/EFSG-Drainage</a>	
Fire Protection	FIRE EXTINGUISHER/ BLANKET: Portable fire extinguisher required where Fire Hose Reel coverage not provided to comply with NCC / FIRE HOSE REEL: As required to comply with NCC	<a href="https://tinyurl.com/EFSG-FireProtection">https://tinyurl.com/EFSG-FireProtection</a>	
Keying	KEYING GENERAL: Keyed alike - Learning Facility / MASTER KEYING: Master keyed - Learning Spaces (LS)	<a href="https://tinyurl.com/EFSG-Keying">https://tinyurl.com/EFSG-Keying</a>	
Signage	AMS room identification door signage (variable - number of room sequential within block) Wayfinding signage in accordance with AS 1428 4	<a href="https://tinyurl.com/EFSG-Signage">https://tinyurl.com/EFSG-Signage</a>	

www.schoolinfrastructure.nsw.gov.au

FOR IMPLEMENTATION/USE OF THE SI PATTERN BOOK, NOTE THE FOLLOWING:

INTELLECTUAL PROPERTY  
Refer to: SI Pattern Book - Introduction, Copyright and Disclaimer.

AGREEMENT OF USE  
Refer to: SI Pattern Book - Introduction, Copyright and Disclaimer.

SINSW CONTACT  
Refer to: SI Pattern Book - Introduction, Copyright and Disclaimer.

DRAWING NOTES

REV	BY	DATE	DESCRIPTION
A		2024/12/03	FOR INFORMATION
B	CHS	2024/12/11	FOR INFORMATION
C	CHS	2024/12/18	REVISED TITLEBLOCK & DRAWING NUMBER
D	CHS	2025/02/05	REVISED ICT COMMENTS
P01	NG	2025/03/21	FOR INFORMATION
P02	SINSW	2025/07/01	ISSUED FOR EFSG 2025r0

PROJECT NAME  
**PATTERN BOOK**

DRAWING TITLE  
**PS101.05 - GLS MULTI PURPOSE ROOM - RDS**

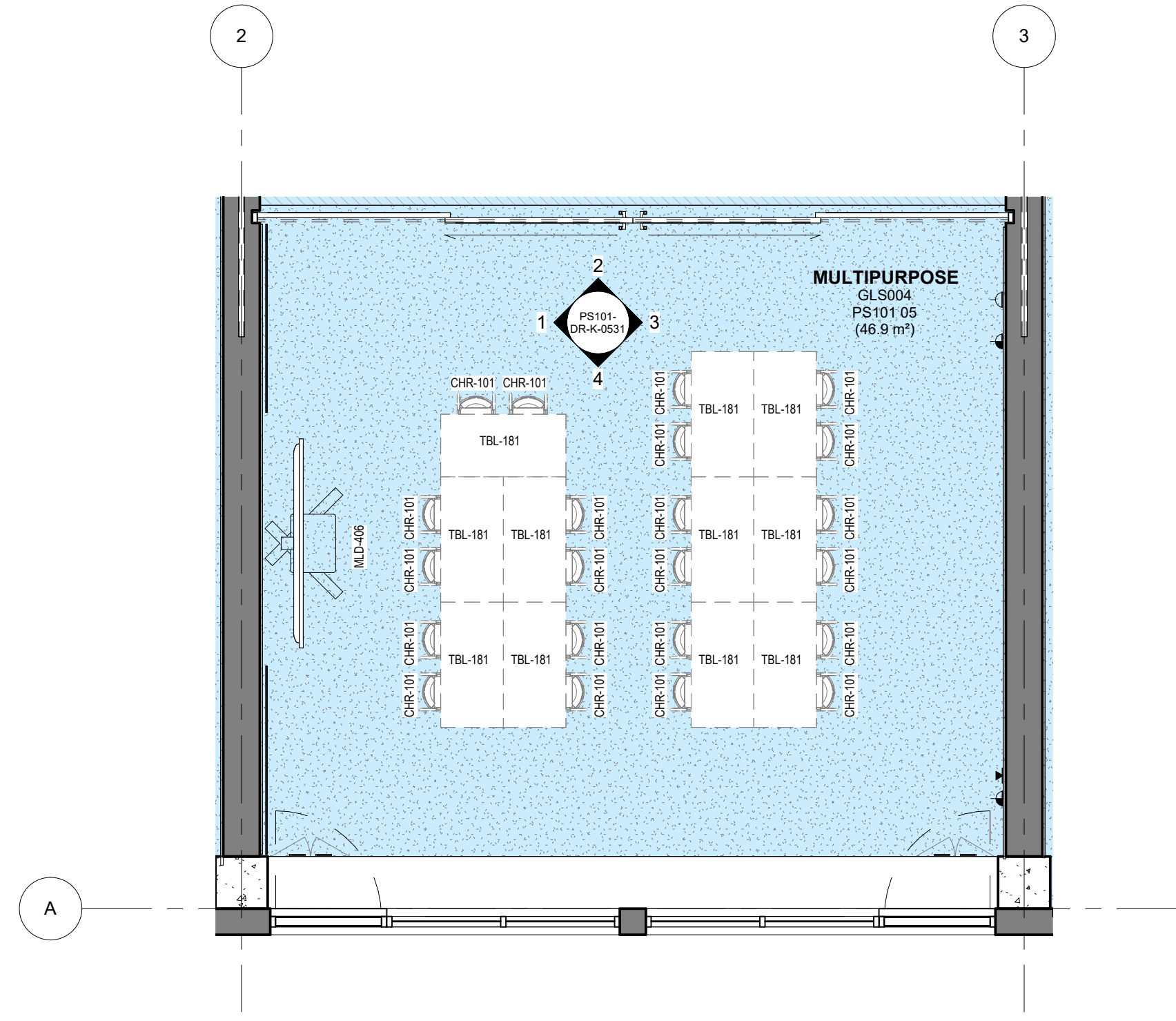
PROJECT NUMBER  
**PXXXXXX**

STATUS  
**FOR INFORMATION**

DRW	CHK	APP	DATE <b>2025/07/01</b>	SCALE <b>1 : 500 @A3</b>
-----	-----	-----	---------------------------	-----------------------------

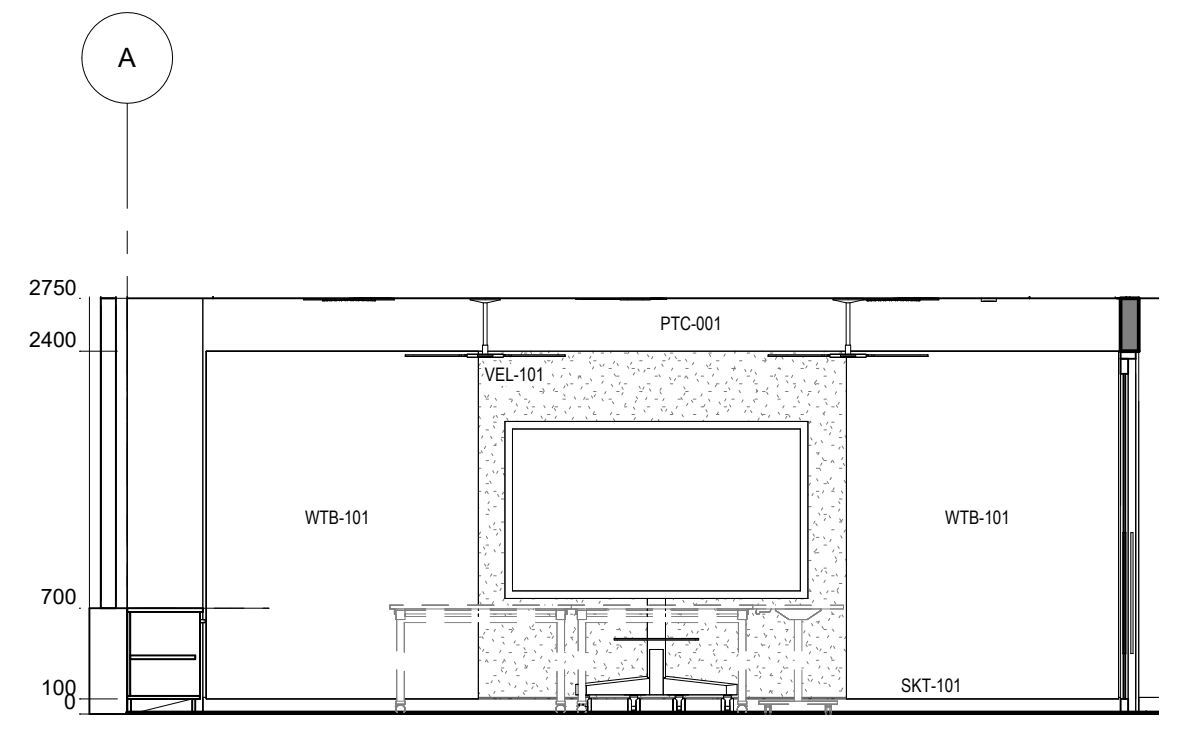
DRAWING NO.  
**PAT-SINSW-GLS-PS101- DR-K-0511**

REV  
**P02**

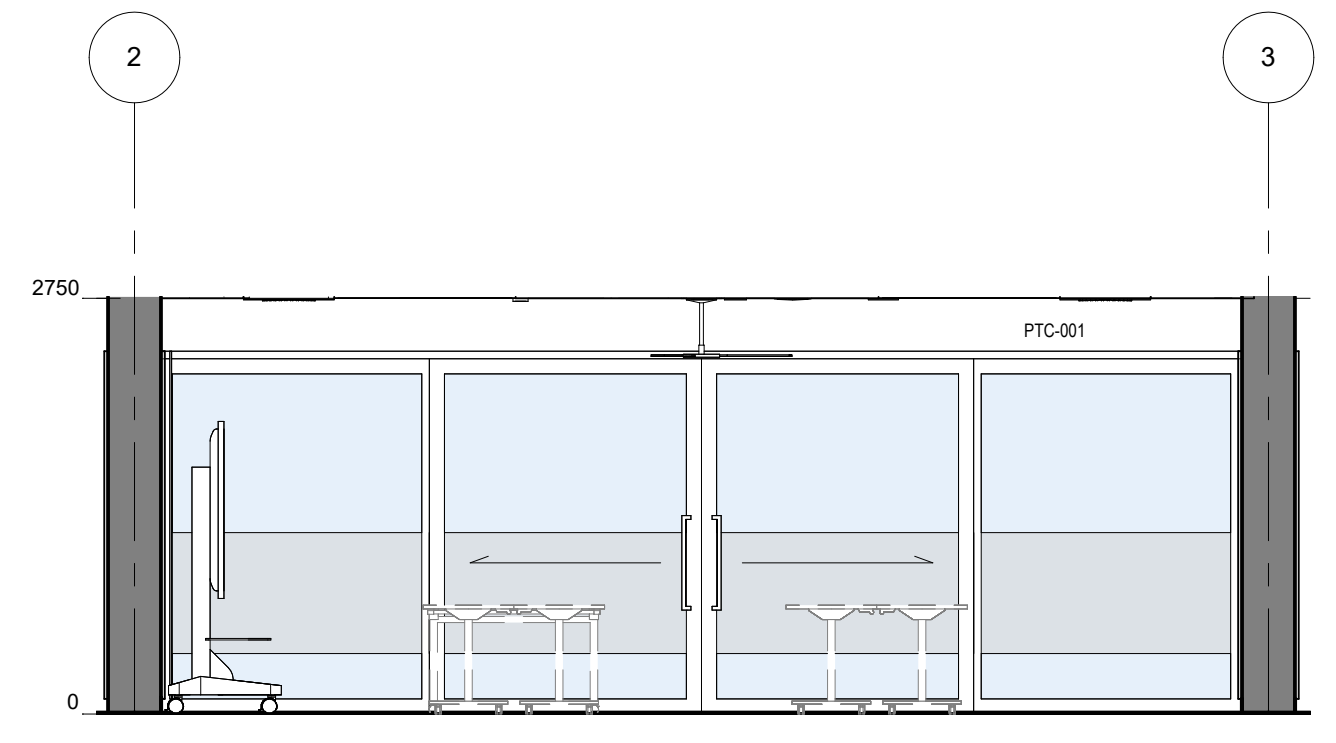


**0 PS - GLS - TYPICAL MULTI PURPOSE - FFE - PLAN**  
1 : 50

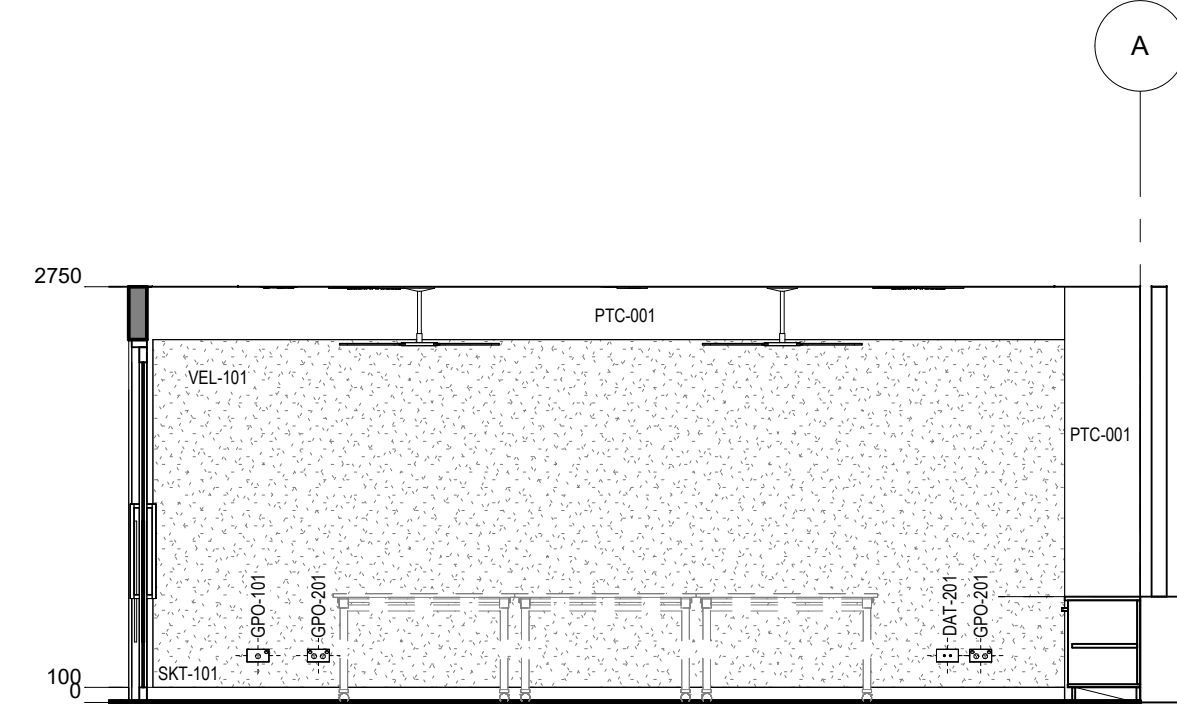
PS MPS - POWER & DATA SCHEDULE		
CODE	DESCRIPTION	QTY
DAT-102	DATA OUTLET - Single - Ceiling Mounted	1
DAT-201	DATA OUTLET - Double - Wall Mount	1
DAT-202	DATA OUTLET - Double - Ceiling Mounted	1
GPO-101	GPO - Single Wall Mounted	1
GPO-201	GPO - Double - Wall Mount	2
MLD-406	MULTI LEARNING DISPLAY - Mobile - Fixed Height - Type 6	1



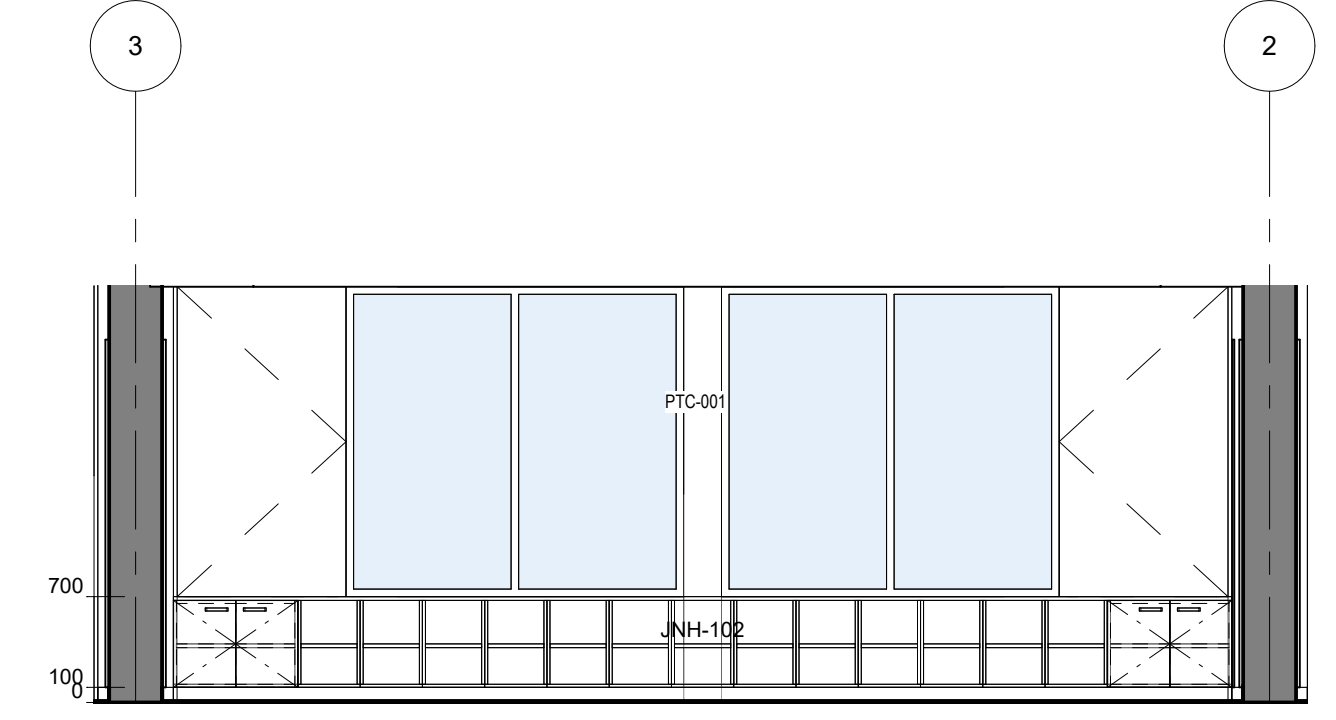
**1 PS - GLS - MULTI-PURPOSE ELEVATION**  
1 : 50



**2 PS - GLS - MULTI-PURPOSE ELEVATION**  
1 : 50



**3 PS - GLS - MULTI-PURPOSE ELEVATION**  
1 : 50



**4 PS - GLS - MULTI-PURPOSE ELEVATION**  
1 : 50

PS MULTI PURPOSE - FFE SCHEDULE					
CODE	DESCRIPTION	IMAGE	QTY	GROUP	COMMENTS
CHR-101	CHAIR - Student - PS - Stackable - Early Stage 1		22	2	Chair available in different sizes as per stage
MLD-406	MULTI LEARNING DISPLAY - Mobile - Fixed Height - Type 6		1	2	
TBL-181	TABLE - Rectangular - FlipTop - 1200W x 600D x 720H		11	2	

