

# HIGH SCHOOL - GENERAL LEARNING SPACE HUB

GLS-HS101

Hub Layouts + Room Data Sheets

**GUIDANCE MATERIAL FOR INFORMATION ONLY**

**DRAFT RELEASE - JULY 2025**



# SCHOOL INFRASTRUCTURE PATTERN BOOK REVIT MODEL

## HIGH SCHOOL - GENERAL LEARNING SPACE HUB

### GLS-HS101

#### REVIT VERSION

# 2024

#### DISCLAIMER – EFSG 2025

THE EDUCATIONAL FACILITIES STANDARDS AND GUIDELINES (EFSG) 2025 FORM PART OF THE CONTRACTUAL REQUIREMENTS FOR THE DESIGN AND DELIVERY OF SCHOOL INFRASTRUCTURE PROJECTS COMMISSIONED BY SCHOOL INFRASTRUCTURE NSW (SINSW). ADHERENCE TO THE EFSG IS MANDATORY AND CONSTITUTES A LEGAL OBLIGATION FOR ALL ENGAGED PARTIES.

EFSG 2025 SETS OUT THE DESIGN INTENT, SPATIAL AND FUNCTIONAL REQUIREMENTS, AND STANDARDISED DESIGN COMPONENTS NECESSARY TO GUIDE THE CONSISTENT, EQUITABLE, AND HIGH-QUALITY DEVELOPMENT OF EDUCATIONAL FACILITIES ACROSS NSW. WHILE COMPREHENSIVE IN SCOPE, THE EFSG IS NOT EXHAUSTIVE. PROJECT TEAMS MUST APPLY PROFESSIONAL JUDGMENT IN ADDRESSING SPECIFIC PROJECT NEEDS, SITE CONDITIONS, AND APPLICABLE STATUTORY AND REGULATORY OBLIGATIONS.

WHILE THE MOST CURRENT VERSION OF THE EFSG IS GENERALLY THE AUTHORITATIVE REFERENCE, THE APPLICABLE VERSION FOR ANY GIVEN PROJECT MAY BE DETERMINED BY THE DATE ON WHICH THE PROJECT'S BUSINESS CASE WAS APPROVED. IT IS THE RESPONSIBILITY OF PROJECT TEAMS TO CONFIRM THE RELEVANT VERSION WITH SINSW AND SEEK CLARIFICATION WHERE UNCERTAINTY EXISTS.

THE EFSG ADOPTS A 'LIVE LEARNING' MODEL, AND UPDATES MAY BE ISSUED THROUGH FUTURE ANNUAL RELEASES TO REFLECT EVOLVING PRIORITIES, SECTOR FEEDBACK, AND LESSONS LEARNED. COMPONENTS SUCH AS THE PATTERN BOOK ARE ITERATIVE TOOLS AND WILL CONTINUE TO BE DEVELOPED OVER TIME.

SINSW ACCEPTS NO LIABILITY FOR ANY LOSS, DAMAGE, OR CLAIM ARISING FROM THE MISAPPLICATION, OUTDATED REFERENCING, OR MISINTERPRETATION OF EFSG CONTENT. USERS MUST ENSURE THEY ARE WORKING FROM THE CORRECT VERSION AND CONFIRM ANY AMBIGUITIES DIRECTLY WITH SINSW.

#### MODEL & DRAWING NOTES

THE DATA CAPTURED IN THIS DOCUMENT IS UNDER DEVELOPMENT AND REVIEW BY SINSW.

THIS DOCUMENT IS TO BE READ IN CONJUNCTION WITH:

- EFSG PART B – FUNCTIONAL DESIGN BRIEF
- EFSG PART C – DESIGN COMPONENTS AND DATA SHEETS
- EFSG PART D – DESIGN AND TECHNICAL STANDARDS
- NATIONAL CONSTRUCTION CODE (NCC)
- AUSTRALIAN STANDARDS
- NATSPEC

ANY DISCREPANCY IN THE INFORMATION WITHIN THIS DOCUMENT AND/OR ANY OTHER DOCUMENT NEEDS TO BE BROUGHT TO THE ATTENTION OF SINSW.

1. HUB LAYOUTS OF DIFFERENT SIZES ARE FOR FUTURE RELEASE - USE THIS DOCUMENT AND THE ROOM DATA SHEETS TO DEVELOP SMALLER OR LARGER HUB LAYOUTS BASED ON SOAS PROVIDED IN PART B.
2. NOT ALL ROOMS ARE ELEVATED. REFER TO A SAME TYPE ELEVATED ROOM AND RDS FOR FURTHER INFORMATION/GUIDANCE .
3. ALL CLEARANCES (OPERATIONAL AND SAFETY) ARE INDICATIVE ONLY AND COMPLIANCE IS TO BE CONFIRMED. THIS INCLUDES SAFETY ZONES AROUND MACHINES AND SPECIFICATIONS OF CONTRACTED MACHINERY AND SPECIALISED EQUIPMENT. CONTRACTED EQUIPMENT SPECIFICATION IS MANAGED BY THE COMPLIANCE AND ENVIRONMENT TEAM AND THE ESIS - EQUIPMENT SAFETY IN SCHOOLS REGISTER.
4. WALL THICKNESSES ARE INDICATIVE ONLY. STRUCTURAL REQUIREMENTS AND ALL SERVICES INSTALLATIONS IN THE PROPOSED LOCATIONS NEED TO BE COORDINATED.
5. AREAS ARE SHOWN IN TWO WAYS:
  - XX.XM<sup>2</sup> - REFERS TO THE STANDARD BUILDING GRID (7.5M X 9M) INCLUDING ALL STRUCTURES, SERVICES, BUILD-INS ETC.
  - (XX.XM<sup>2</sup>) - REFERS TO USABLE AREA TO THE INTERNAL FACE OF WALL BASED ON AN AGNOSTIC ENVELOPE
6. ALL FFE IS UNDER DEVELOPMENT AND PRODUCT IMAGERY IS INDICATIVE ONLY.
7. BLOCK OUT BLINDS ARE REQUIRED TO EXTERNAL WINDOWS & EXTERNAL GLAZED DOORS ON GF AND WHERE ADJACENT TO A WALKWAY.
8. SIGNAGE IS UNDER DEVELOPMENT AND INDICATIVE ONLY. 2 TYPES ARE REQUIRED FOR EACH SPACE: FIXED ROOM IDENTIFICATION SIGN (AMS DOOR SIGN) & VARIABLE ROOM IDENTIFICATION SYSTEM.
9. ALSO REFER TO:
  - AUDIO VISUAL SPECIFICATION AT THE TIME OF TENDER. CAPTURED ON DRAWINGS FOR DESIGN LOCATION INTENT ONLY.
  - HEARING AUGMENTATION STRATEGY. ANY MENTION IN THE ROOM DATA SHEETS IS INDICATIVE ONLY AND SHOULD BE VERIFIED WITH THE PRINCIPAL.
  - GAS PROVISION STRATEGY FOR INTERIM MEASURES.
10. GRAPHIC REPRESENTATION OF EXTERNAL FACADE ELEMENTS, IN BOTH PLAN AND ELEVATION ARE INDICATIVE ONLY AND TO BE RESOLVED BY PROJECT TEAMS.

P06	SINSW	2025/07/01	ISSUED FOR EFSG 2025r0
P05	NC	2025/05/29	FOR INFORMATION
P04	NC	2025/05/15	FOR INFORMATION
P03	NC	2025/05/02	FOR INFORMATION
P02	NC	2025/04/04	FOR INFORMATION
<b>REV</b>	<b>BY</b>	<b>DATE</b>	<b>DESCRIPTION</b>

# Hub Layout and Room Data Sheets

High School

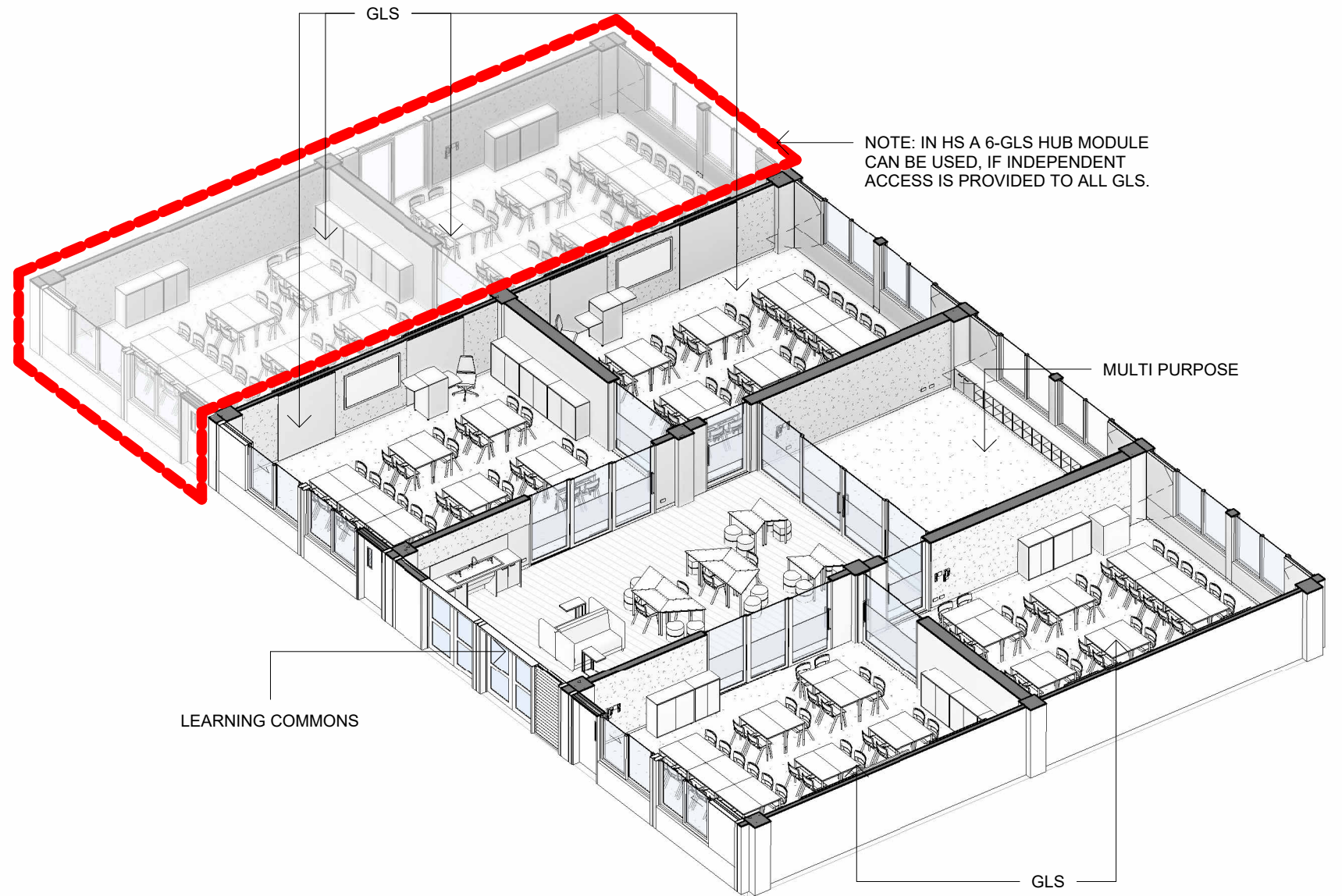
## General Learning Space (GLS HUB)

### General Information

<b>Description</b>	The GLS hub offers a variety of learning environments for high school students used for teaching subjects which do not typically require specialist equipment or resources. These spaces meet diverse needs of students, and teaching styles, include opportuni
<b>Location</b>	Refer to Patternbook. GLS hubs can be stacked or be located in adjacent building blocks, subject to project specifics.
<b>Hours of Operation</b>	School hours; out-of-school hour use to be agreed with the school.
<b>Functional Requirements</b>	Arranged in clusters to accommodate a whole year on one building level at the minimum.
<b>Critical Relationships</b>	Staff, Amenities
<b>Occupancy/Capacity/Area</b>	Max 30 students per GLS and 1x teacher (potentially 1 or more SLSO/s)/ Hub Area: 3 bays = 405 sqm based on the standardised building grid of 7.5 x 9m (including all services, structure and internal building elements). Refer to area schedule & general arrangement floor plans. Note: in HS a 6-GLS hub module can be used, if independent access is provided to all GLS.
<b>Design Requirement</b>	<p>The total number of GLS provided is to be determined based on enrolment projections. GLSs in Specialist Learning Hubs are to be included in the school capacity count.</p> <p>The GLS hub provides four areas that support flexible use of space to enable a variety of learning and social activities.</p> <ul style="list-style-type: none"> <li>• The primary function of the GLS is to enable explicit instruction of students along with independent and group learning.</li> <li>• The Learning Common (LC) offers more opportunities for students to collaborate and work with diverse groups of peers.</li> <li>• Practical Activity Area (PAA) supports opportunities for practical ('hands on') activities within the LC.</li> <li>• The Multipurpose Space (MPS) can be used by small or mid-sized groups of students working either with staff or independently. The MPS may also be used to support student readiness to learn.</li> <li>• The hub must retain a level of flexibility in its design to enable agile and responsive use of affordances by teachers to meet student learning needs. The hub must operate with close relationships and visual connections between the variety of spaces.</li> </ul>
<b>Hub arrangement</b>	4x or 6x GLS. 1 x Learning Commons. 1 x Multipurpose Space (MPS)
<b>Qualitative Design Objectives</b>	

### Services

<b>General Requirements</b>	NOTE: Further co-ordination with Services Consultants is required.
<b>Cooling/Heating</b>	Required
<b>Ventilation</b>	Natural Ventilation via Facade Panel and ceiling fans
<b>Water/Drainage</b>	1 x PAA within LC
<b>Sprinklers</b>	To be co-ordinated with services consultant.
<b>Smoke Extract</b>	To be co-ordinated with services consultant.
<b>Lighting</b>	Yes
<b>Power</b>	Yes
<b>ICT/Commns/Data</b>	Yes
<b>WIFI/Telephone Access Point</b>	Yes
<b>Hearing Augmentation</b>	Refer to SINSW Hearing Augmentation strategy.
<b>Special Requirements</b>	Access Control / Door Release / Fire Alarm - under development



FOR IMPLEMENTATION/USE OF THE SI PATTERN BOOK, NOTE THE FOLLOWING:

INTELLECTUAL PROPERTY  
Refer to: SI Pattern Book - Introduction, Copyright and Disclaimer.

AGREEMENT OF USE  
Refer to: SI Pattern Book - Introduction, Copyright and Disclaimer.

SINSW CONTACT  
Refer to: SI Pattern Book - Introduction, Copyright and Disclaimer.

### DRAWING NOTES

REV	BY	DATE	DESCRIPTION
3	CHS	2025/02/05	REVISED ICT DATA - FOR INFORMATION
4	NC	2025/03/07	FOR INFORMATION
P01	NG	2025/03/21	FOR INFORMATION
P02	NC	2025/04/04	FOR INFORMATION
P03	NC	2025/05/02	FOR INFORMATION
P04	NC	2025/05/15	FOR INFORMATION
P05	NC	2025/05/29	FOR INFORMATION
P06	SINSW	2025/07/01	ISSUED FOR EFSG 2025r0

PROJECT NAME  
**PATTERN BOOK**

DRAWING TITLE  
**HS101 - GLS - HUB COVER**

PROJECT NUMBER  
**PXXXXXX**

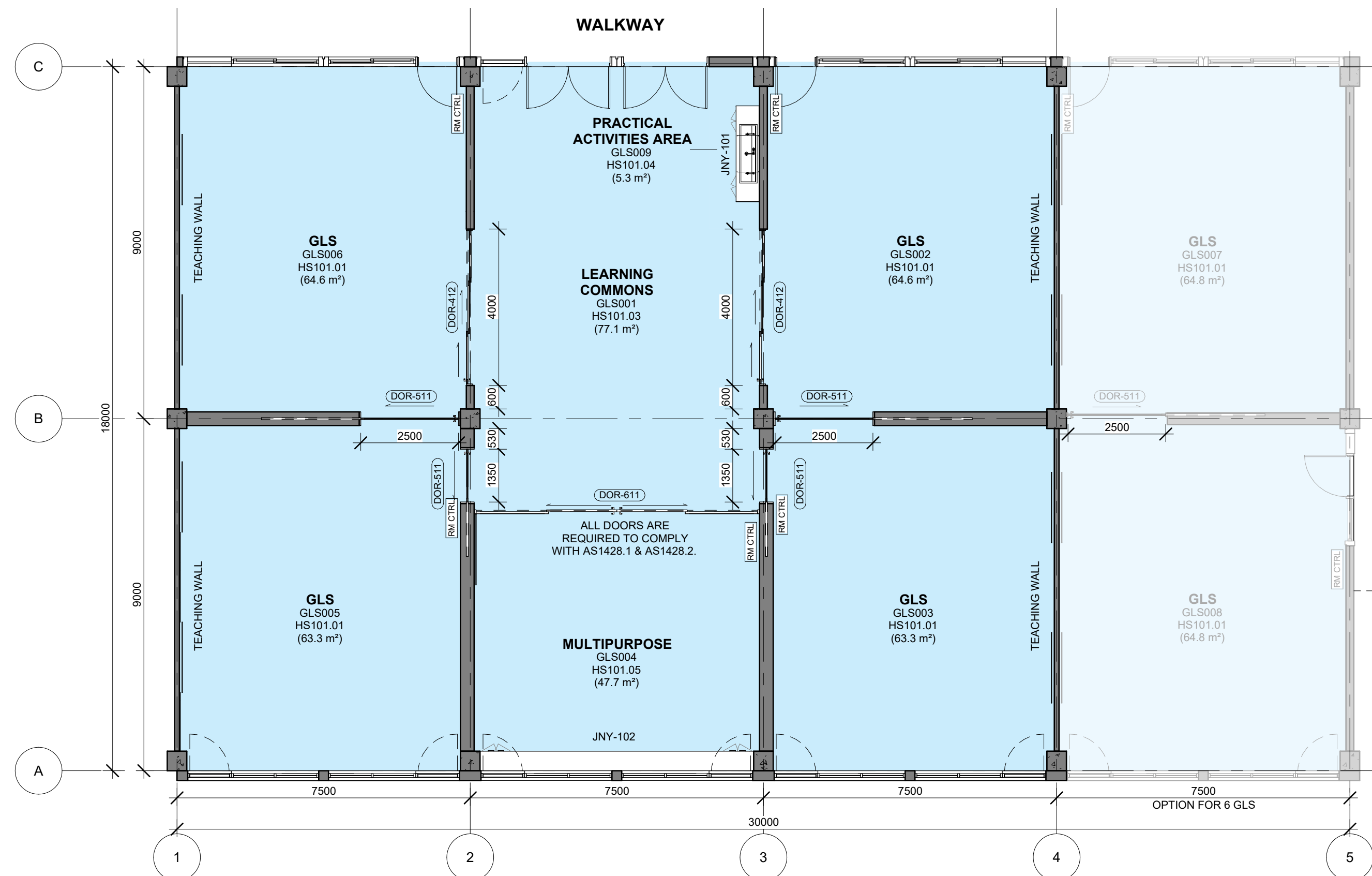
STATUS  
**FOR INFORMATION**

DRW | CHK | APP | DATE  
**2025/07/01**

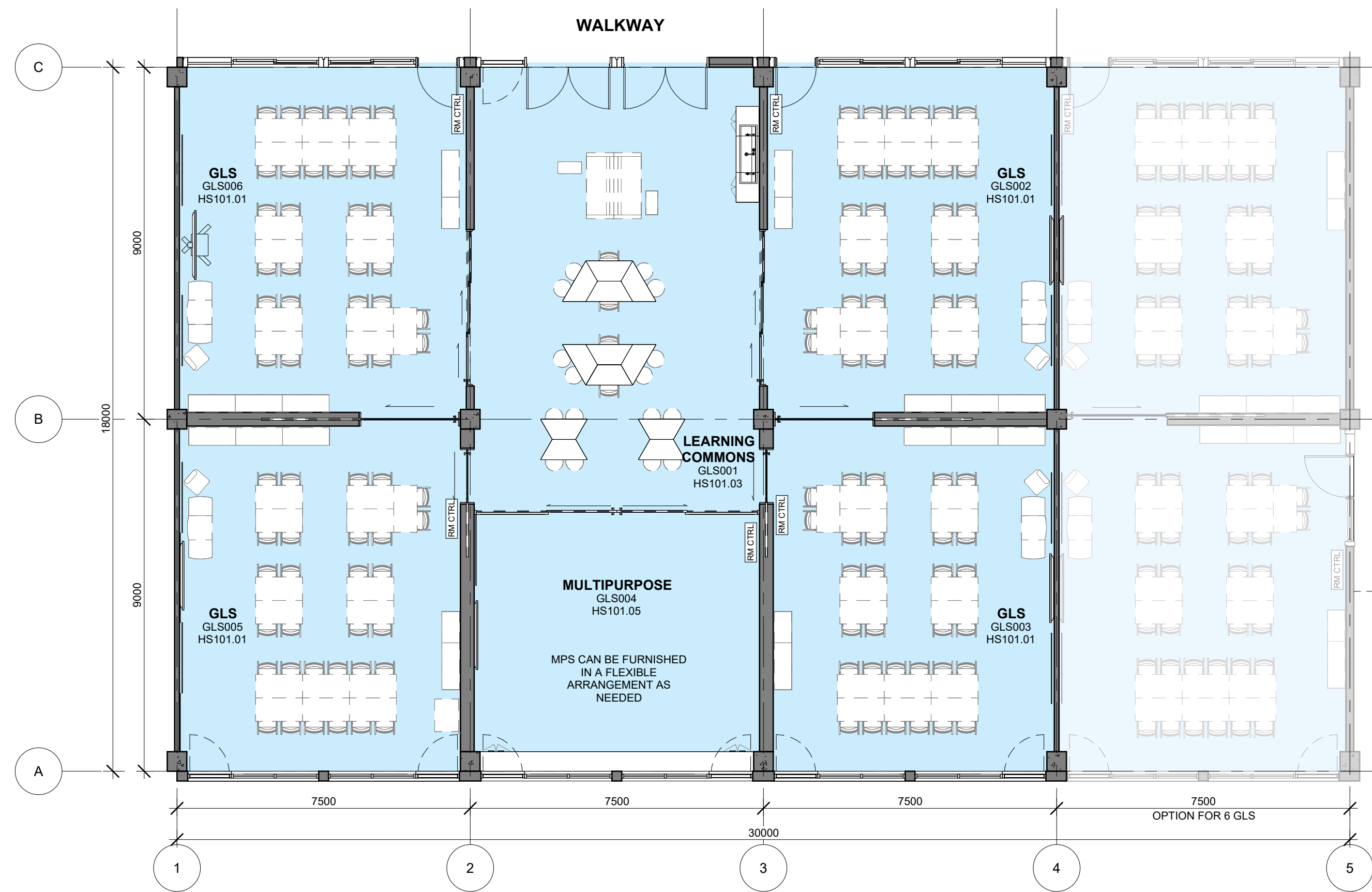
SCALE  
**@A3**

DRAWING NO.  
**PAT-SINSW-GLS-HS101- DR-K-0001**

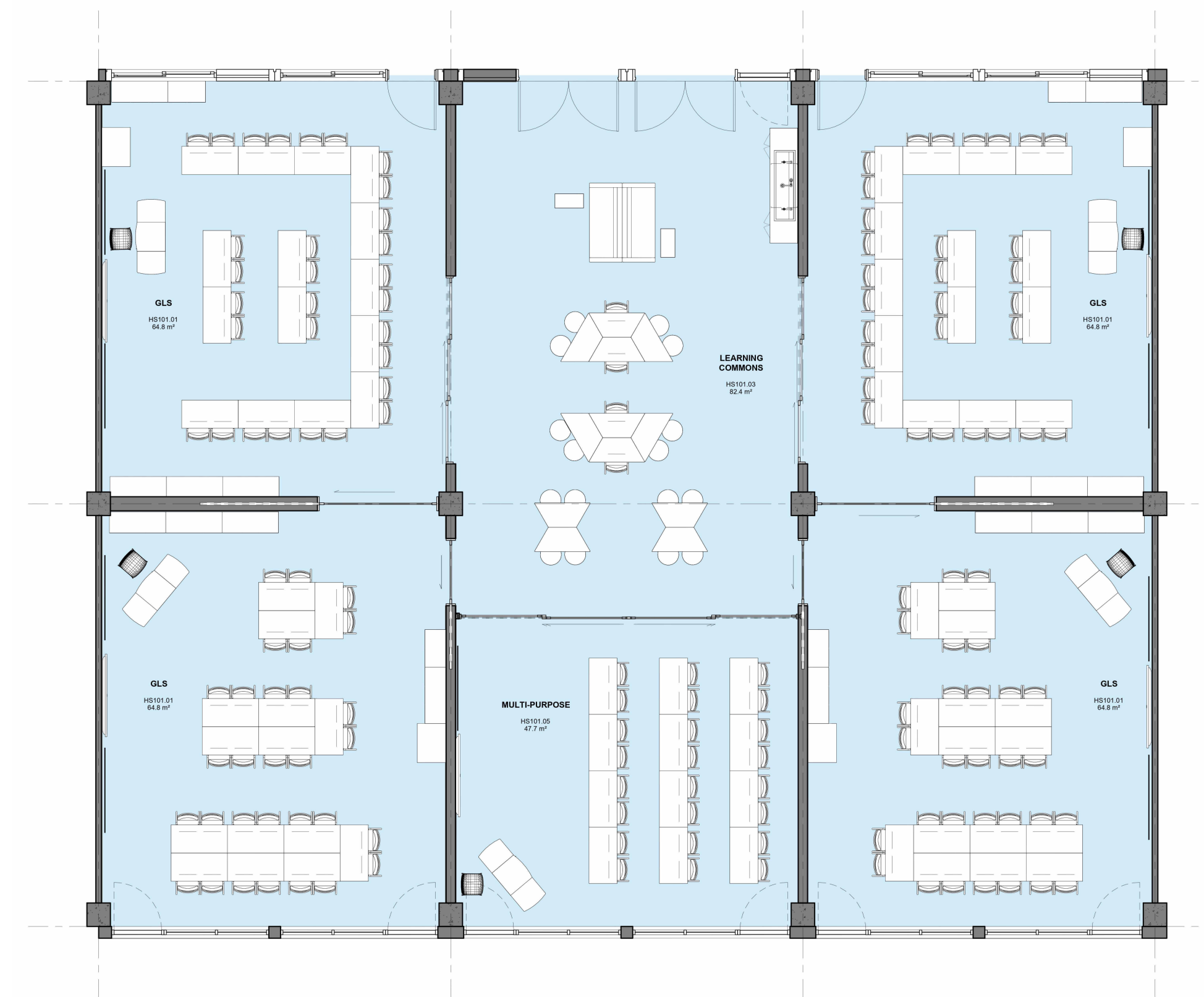
REV  
**P06**



**1** HS - GLS - GA PLAN  
1 : 100



**2** HS - GLS - FFE PLAN  
1 : 100

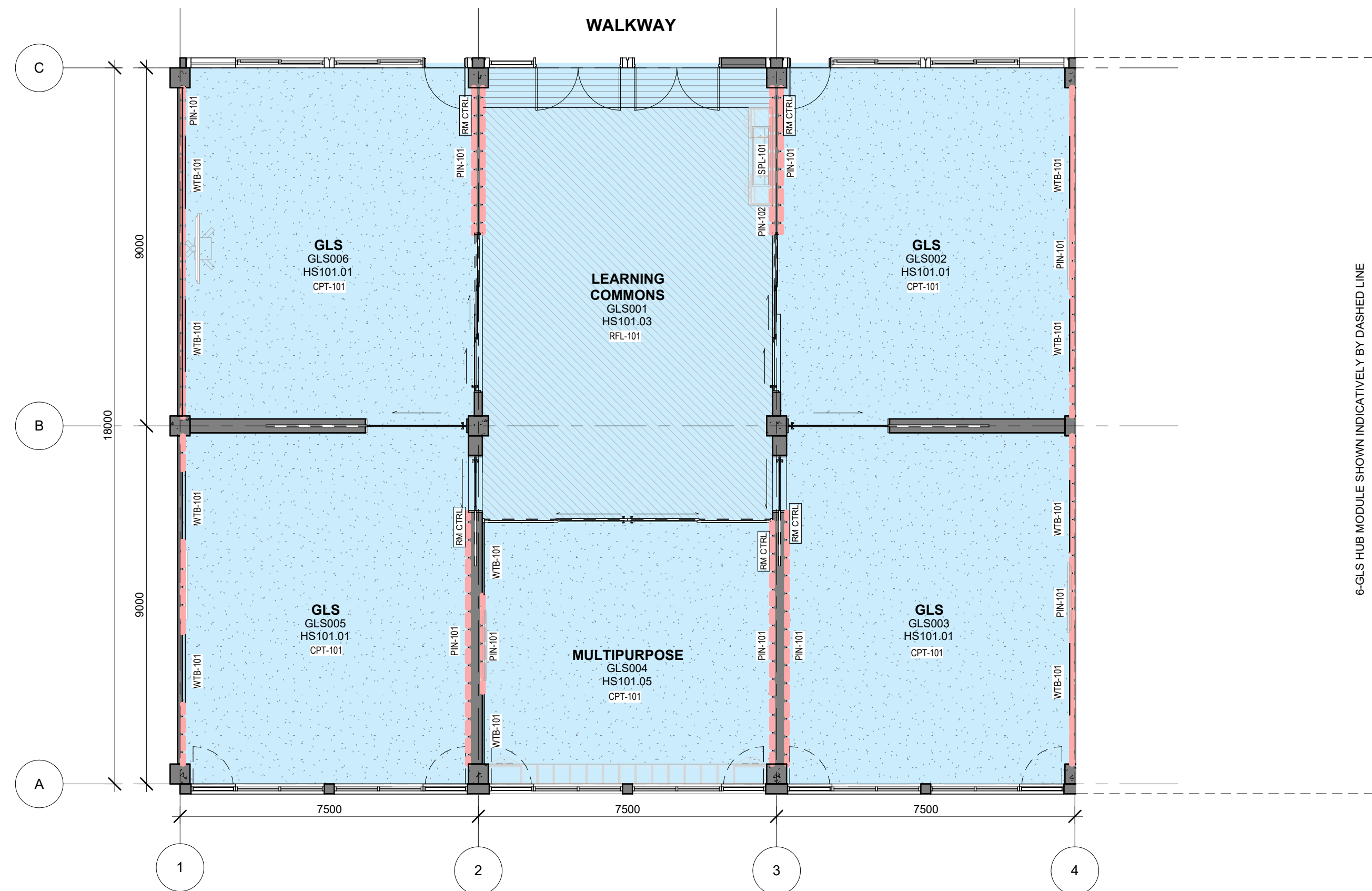


**3** HS - GLS - OPTIONAL FFE PLAN  
1 : 100

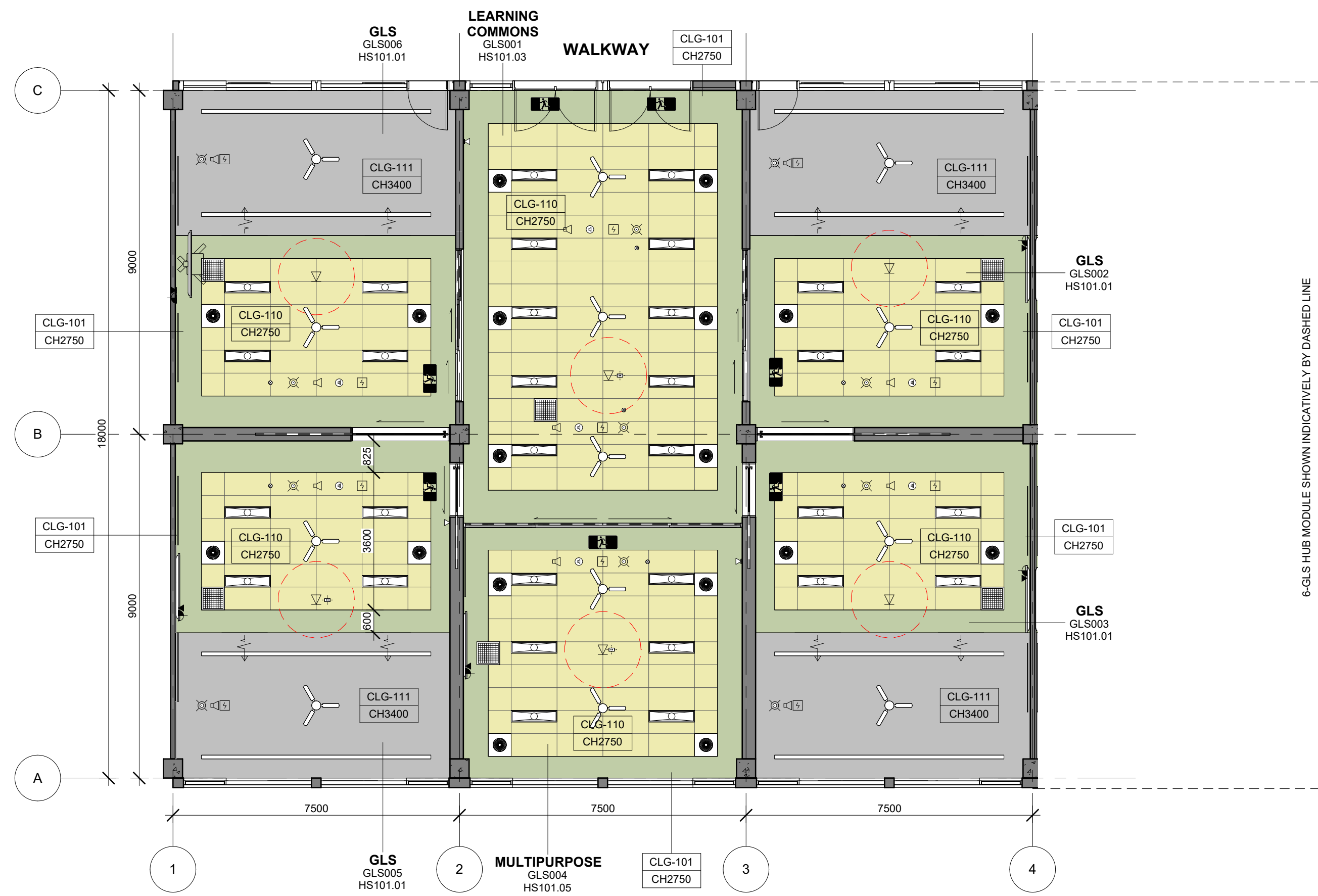
NOTE: MPS SET UP EXCLUDING JOINERY IS MAX 24 STUDENT (2SQM PER STUDENT)

NOTE: REFER TO PATTERN BOOK PART C FURNITURE SECTION FOR OPTIONAL LAYOUTS





**1 HS - GLS - FINISHES PLAN**  
1 : 100

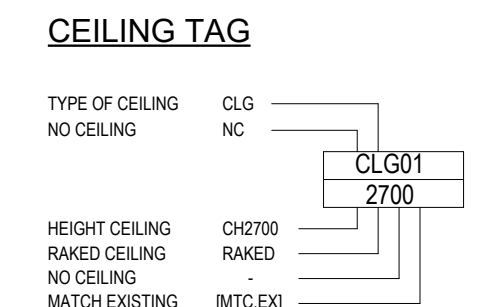


**2 HS - GLS - RCP PLAN (Mechanical Strategy Type 1)**  
1 : 100

- ### FLOOR FINISH
- CONCRETE
  - CPT101 CARPET - TILES
  - CPT-150 CARPET - MARINE GRADE
  - MAT-101 ENTRY MAT
  - RBF-101 RUBBER FLOORING
  - RFL-101 RESILIENT FLOORING
  - RFL-201 RESILIENT FLOORING - SCIENCE
  - TBF-101 TIMBER FLOORING
  - TLF-101 TILE FLOORING

- ### WALL APPLIED FINISH
- PIN-101 PINBOARD 100mm AFFL - 2750mm AFFL
  - PIN-102 PINBOARD 1350mm AFFL - 2750mm AFFL
  - PIN-201 PINBOARD 100mm AFFL - 2750mm AFFL
  - VEL-101 VELCRO BOARD 100mm AFFL - 2750mm AFFL
  - VEL-102 VELCRO BOARD 1350mm AFFL - 2750mm AFFL
  - LIN-101 LINOLEUM 100mm AFFL - 2750mm AFFL
  - MIR-201 MIRRORS
  - SPL-101 LAMINATE SPLASHBACK
  - TIP-101 TIMBER PANELS
  - TLW-101 TILES
  - WTB-101 WHITEBOARDS
- NOTE: TO ALL OTHER WALLS, PAINT COLOUR TO BE CONFIRMED

NOTE: REFER TO SERVICES ENGINEER'S DRAWINGS FOR DETAILED INFORMATION. SYMBOLS DRAWN ARE REPRESENTATIONAL ONLY.



- ### CEILING TYPE
- CLG-100 EXPOSED CONCRETE - CLASS 2 FINISH
  - CLG-101 SUSPENDED CEILING - STANDARD FLUSH PLASTERBOARD
  - CLG-102 SUSPENDED CEILING - STANDARD WATER RESISTANT FLUSH PLASTERBOARD
  - CLG-103 SUSPENDED CEILING - ACOUSTIC PERFORATED PLASTERBOARD
  - CLG-104 SUSPENDED CEILING - FIRE RATED PLASTERBOARD (90/90)
  - CLG-105 SUSPENDED CEILING - FIRE RATED PLASTERBOARD 1201/20/120
  - CLG-110 SUSPENDED CEILING - CEILING TILE 1200 x 600
  - CLG-111 ACOUSTIC CEILING - DIRECT STICK 12MM
  - CLG-112 ACOUSTIC CEILING - DIRECT STICK 24MM
  - CLG-120 ACOUSTIC CEILING - WOOD & METAL WORKSHOP
  - CLG-210 EXTERNAL - FC CEILING - TYPE 1
  - CLG-220 EXTERNAL - FC CEILING - PERFORATED
  - CLG-230 EXTERNAL - FEATURE CEILING - TYPE 1
  - CLG-310 INTERNAL - FEATURE ACOUSTIC PANEL - TYPE 1
  - CLG-311 INTERNAL - FEATURE ACOUSTIC PANEL - TYPE 2
  - CLG-320 INTERNAL - FEATURE CEILING - TYPE 1
- NOTE: AN ACOUSTIC ASSESSMENT AGAINST THE PERFORMANCE SPECIFICATIONS IS REQUIRED PER PROJECT.

- ### MECHANICAL
- MEC-101 SUPPLY AIR SWIRL - 350 DIA 600 x 600
  - MEC-102 SUPPLY AIR SWIRL - 450 DIA 600 x 600
  - MEC-103 KITCHEN EXHAUST GRILLE
  - MEC-104 TOILET EXHAUST GRILLE
  - MEC-105 RETURN AIR GRILLE
  - MEC-106 ACCESS PANEL
  - MEC-107 CEILING MOUNTED FAN
  - MEC-108 CASSETTE UNIT FCU

- ### LIGHT FITTINGS
- ELE-101 SURFACE MOUNTED LINEAR DIFFUSED LIGHT
  - ELE-102 RECESSED PANEL LED LIGHT - 600x600
  - ELE-103 RECESSED PANEL LED LIGHT - 300x1200
  - ELE-104 SURFACE MOUNTED LIGHT
  - ELE-105 FEATURE PENDANT LIGHT
  - ELE-106 SURFACE MOUNTED BATTEN WITH EMERGENCY LIGHT
  - ELE-106 SURFACE MOUNTED BATTEN
- NOTE: Assess fixtures type and distribution against strobing effect.

- ### FIRE DETECTION & WARNING SYSTEM
- FIR-101 SMOKE DETECTOR
  - FIR-102 SURFACE MOUNTED SMOKE DETECTOR
  - FIR-103 CEILING PA SPEAKER
  - FIR-104 CEILING FIRE WARNING SPEAKER

- ### EMERGENCY & EXIT LIGHTING
- EML-101 LED EMERGENCY LIGHT
  - EML-102 LED / FLUORESCENT EMERGENCY EXIT LIGHT FITTING RECESSED
  - EML-103 LED / FLUORESCENT EMERGENCY EXIT LIGHT FITTING SURFACE MOUNTED
  - MTS-101 MOTION SENSOR
  - WAP-101 WIRELESS ACCESS POINT - RED DASHED LINE INDICATES 1m CLEARANCE ZONE
  - PIR-101 PIR MOTION DETECTOR
  - DAT-201 CEILING MOUNTED DATA OUTLET
  - DAT-202
- NOTE: WAP - WIRELESS ACCESS POINT PROVIDED TO EVERY ROOM UNLESS NOTED OTHERWISE.



DRAWING NOTES

NOTE: THIS RCP IS INDICATIVE OF DESIGN INTENT ONLY. ALL SERVICES TO BE DESIGNED BY DAC CONTRACTOR BASED ON PERFORMANCE SPECIFICATIONS SET OUT BY THE EFSQ. REFER TO PATTERN BOOK FOR MECHANICAL DESIGN INTENT. TYPE OF STRATEGY DEFINES THE RCP LAYOUT. (TYPE 1 CENTRALISED FAN COOL UNITS ARE DOCUMENTED IN THE RDS AND LAYOUTS).

REV	BY	DATE	DESCRIPTION
3	CHS	2025/02/05	REVISED ICT DATA - FOR INFORMATION
4	NC	2025/03/07	FOR INFORMATION
01	NG	2025/03/21	FOR INFORMATION
02	NC	2025/04/04	FOR INFORMATION
03	NC	2025/05/02	FOR INFORMATION
04	NC	2025/05/15	FOR INFORMATION
05	NC	2025/05/29	FOR INFORMATION
06	SINSW	2025/07/01	ISSUED FOR EFSQ 2025/6

PROJECT NAME  
**PATTERN BOOK**

DRAWING TITLE  
**HS101 - GLS - HUB FINISHES & RCP PLANS**

PROJECT NUMBER  
**PXXXXXX**

DATE  
**2025/07/01**

STATUS  
**FOR INFORMATION**

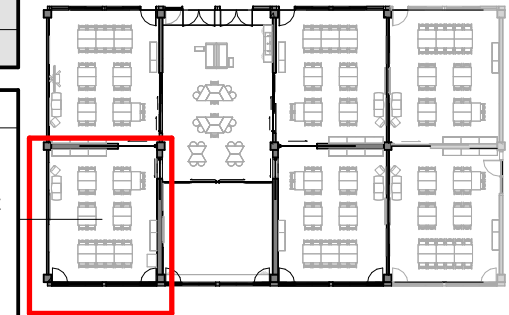
SCALE  
**1 : 100 @A1**

DRAWING NO.  
**PAT-SINWS-GLS-HS101- DR-K-0020**

REV  
**P06**

Room Name	GLS
Hub Name	HS 101 GENERAL LEARNING SPACES
Facility ID	HS101.01

Item	Room Data	EFSG Link	Comments
Area Function	The primary function of the GLS is to enable explicit instruction of students along with independent and group learning.		Refer to SI Design Requirements - Technical Requirements and RDS input
Provisional Areas	67.5m <sup>2</sup> measured to building grid. Minimum GLS area is 60m <sup>2</sup> clear including internal circulation but excluding storage, internal walls, structure and services.		
Number of Occupants	Max. 30 students and 1 x teacher (potentially 1 or more SLSO/s)		
Functional Relationship Considerations	Provide line of sight to common areas, including circulation areas. Ability to open or close classroom to other learning spaces to accommodate different learning activities. Refer to FF+E requirements.		
Other Relevant Info/ Gaps	Class sizes Years 7-10 - Max. 24 students Years 11- 12 - Max. 24 students Size of sliding doors to meet functional requirements and acoustic requirements. Site specific opportunities to external GLS wall located at the end of a building.		
ESD Category	Primary		
Floor & Skirting	Refer to Finishes Plan & Elevation Drawings. Skirting: SKT-101.	<a href="https://tinyurl.com/EFSG-Finish">https://tinyurl.com/EFSG-Finish</a>	
Ceiling Type	Refer to RCP Drawing	<a href="https://tinyurl.com/EFSG-Ceilings">https://tinyurl.com/EFSG-Ceilings</a>	
Wall	Refer to Finishes Plan & Elevation Drawings. Wall strengthening required for application of displays, shelving, etc	<a href="https://tinyurl.com/EFSG-Walls">https://tinyurl.com/EFSG-Walls</a>	
Doors	Refer to Pattern Book	<a href="https://tinyurl.com/EFSG-Doors">https://tinyurl.com/EFSG-Doors</a>	
Windows	Refer to Pattern Book	<a href="https://tinyurl.com/EFSG-Windows">https://tinyurl.com/EFSG-Windows</a>	
Acoustic	Refer to EFSG and relevant standards/ codes. Note: Further consultant input required.	<a href="https://tinyurl.com/EFSG-Acoustic">https://tinyurl.com/EFSG-Acoustic</a>	
Ventilation	Refer to Pattern Book	<a href="https://tinyurl.com/EFSG-Ventilation">https://tinyurl.com/EFSG-Ventilation</a>	
Light	DAYLIGHT: Access to natural light required. / BROWN OUT: Space requires glare reducing brown out capabilities to all windows.	<a href="https://tinyurl.com/EFSG-Lighting">https://tinyurl.com/EFSG-Lighting</a>	
Illumination	LUX LEVEL: 240 lux. / LIGHTING CONTROL: N/A	<a href="https://tinyurl.com/EFSG-Illumination">https://tinyurl.com/EFSG-Illumination</a>	
Cooling	FAN: Required. / COOLING: Required.	<a href="https://tinyurl.com/EFSG-Cooling">https://tinyurl.com/EFSG-Cooling</a>	
Heating	HEATING: Required	<a href="https://tinyurl.com/EFSG-Heating">https://tinyurl.com/EFSG-Heating</a>	
Gas	NIL	<a href="https://tinyurl.com/EFSG-Gas">https://tinyurl.com/EFSG-Gas</a>	
ICT (FOR QUANTITIES REFER TO THE ROOM'S POWER & DATA SCHEDULE)	LOCATION/SERVICE: (CONFIGURATION, INSTALLATION HEIGHT, USAGE). ROOM: DAT-201 + GPO-201, 300mm, General usage. AV: DAT-201 + GPO-201, MLD-105, Standard MLD layout, MLD, Mini PC, Hearing augmentation, spare WAP: DAT-202, WAP-102, Ceiling centrally positioned. Wireless point PHONE: DAT-101 and TEL-101 as per standard layout, located with room controls. BMS/IOT: DAT-101, 2400-3000mm above room controls, Provision for future use. HEARING: Allowed for with AV CHARGE STATION: GPO-201 CLEANER/UTILITY: GPO-101, 300mm, At entry door near room controls	<a href="https://tinyurl.com/EFSG-Electrical">https://tinyurl.com/EFSG-Electrical</a>  <a href="https://tinyurl.com/EFSG-Comms">https://tinyurl.com/EFSG-Comms</a>	
Security	SECURITY LEVEL: Category A - Low Security Level applies.	<a href="https://tinyurl.com/EFSG-Security">https://tinyurl.com/EFSG-Security</a>	
Water	N/A	<a href="https://tinyurl.com/EFSG-Water">https://tinyurl.com/EFSG-Water</a>	
Drainage	N/A	<a href="https://tinyurl.com/EFSG-Drainage">https://tinyurl.com/EFSG-Drainage</a>	
Fire Protection	FIRE EXTINGUISHER/ BLANKET: Portable fire extinguisher required where Fire Hose Reel coverage not provided to comply with NCC. / FIRE HOSE REEL: As required to comply with NCC.	<a href="https://tinyurl.com/EFSG-FireProtection">https://tinyurl.com/EFSG-FireProtection</a>	
Keying	KEYING GENERAL: Keyed alike - Learning Facility. / MASTER KEYING: Master keyed - Learning Spaces (LS).	<a href="https://tinyurl.com/EFSG-Keying">https://tinyurl.com/EFSG-Keying</a>	
Signage	AMS room identification door signage ("GLS" - number of room sequential within block). Wayfinding signage in accordance with AS 1428.4.	<a href="https://tinyurl.com/EFSG-Signage">https://tinyurl.com/EFSG-Signage</a>	



www.schoolinfrastructure.nsw.gov.au

FOR IMPLEMENTATION/USE OF THE SI PATTERN BOOK, NOTE THE FOLLOWING:  
INTELLECTUAL PROPERTY  
Refer to: SI Pattern Book - Introduction, Copyright and Disclaimer.  
AGREEMENT OF USE  
Refer to: SI Pattern Book - Introduction, Copyright and Disclaimer.  
SINSW CONTACT  
Refer to: SI Pattern Book - Introduction, Copyright and Disclaimer.

DRAWING NOTES

REV	BY	DATE	DESCRIPTION
3	CHS	2025/02/05	REVISED ICT DATA - FOR INFORMATION
4	NC	2025/03/07	FOR INFORMATION
P01	NG	2025/03/21	FOR INFORMATION
P02	NC	2025/04/04	FOR INFORMATION
P03	NC	2025/05/02	FOR INFORMATION
P04	NC	2025/05/15	FOR INFORMATION
P05	NC	2025/05/29	FOR INFORMATION
P06	SINSW	2025/07/01	ISSUED FOR EFSG 2025r0

PROJECT NAME  
**PATTERN BOOK**

DRAWING TITLE  
**HS101.01 - GLS - GENERAL LEARNING SPACES - RDS**

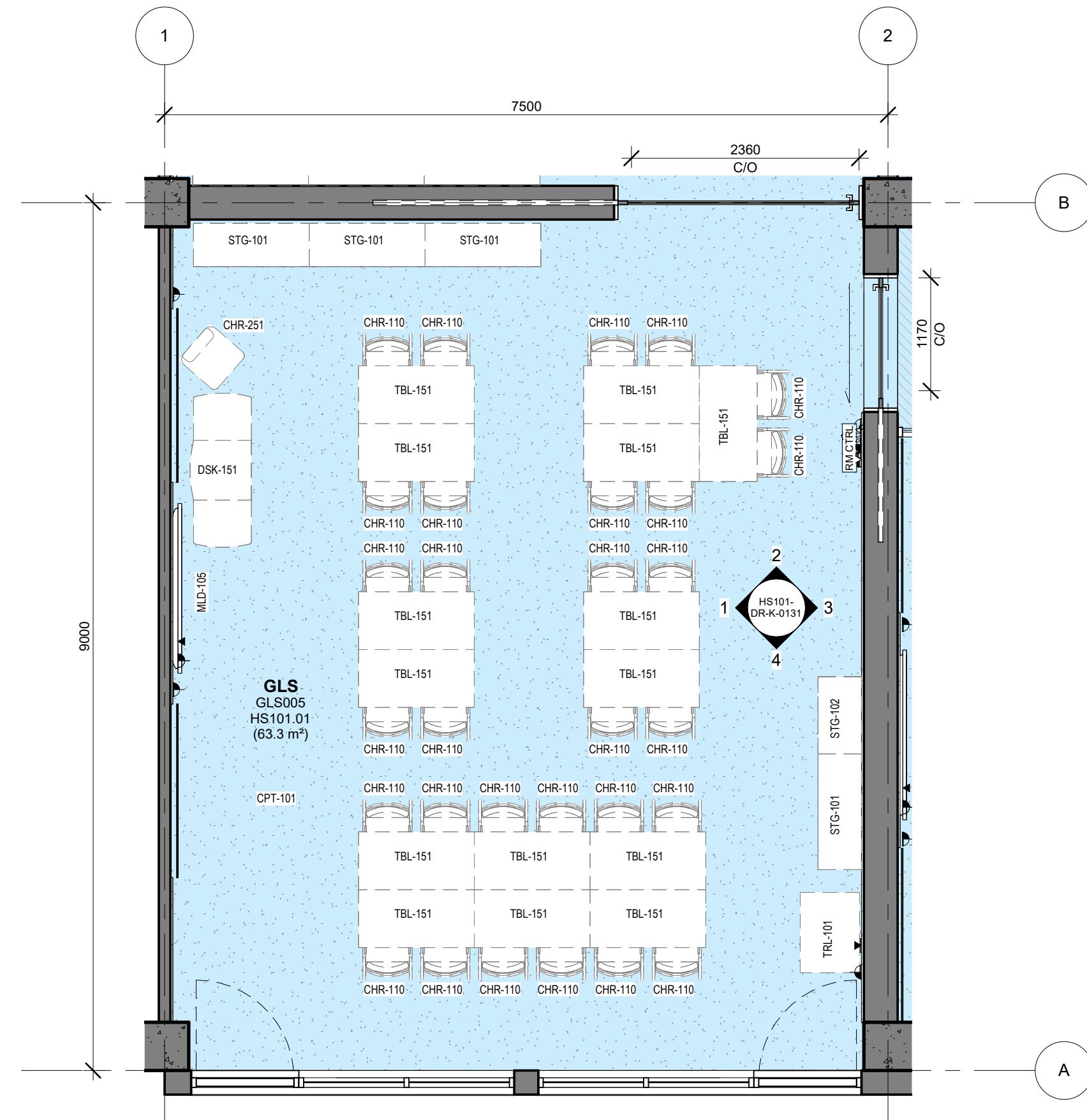
PROJECT NUMBER  
**PXXXXXX**

STATUS  
**FOR INFORMATION**

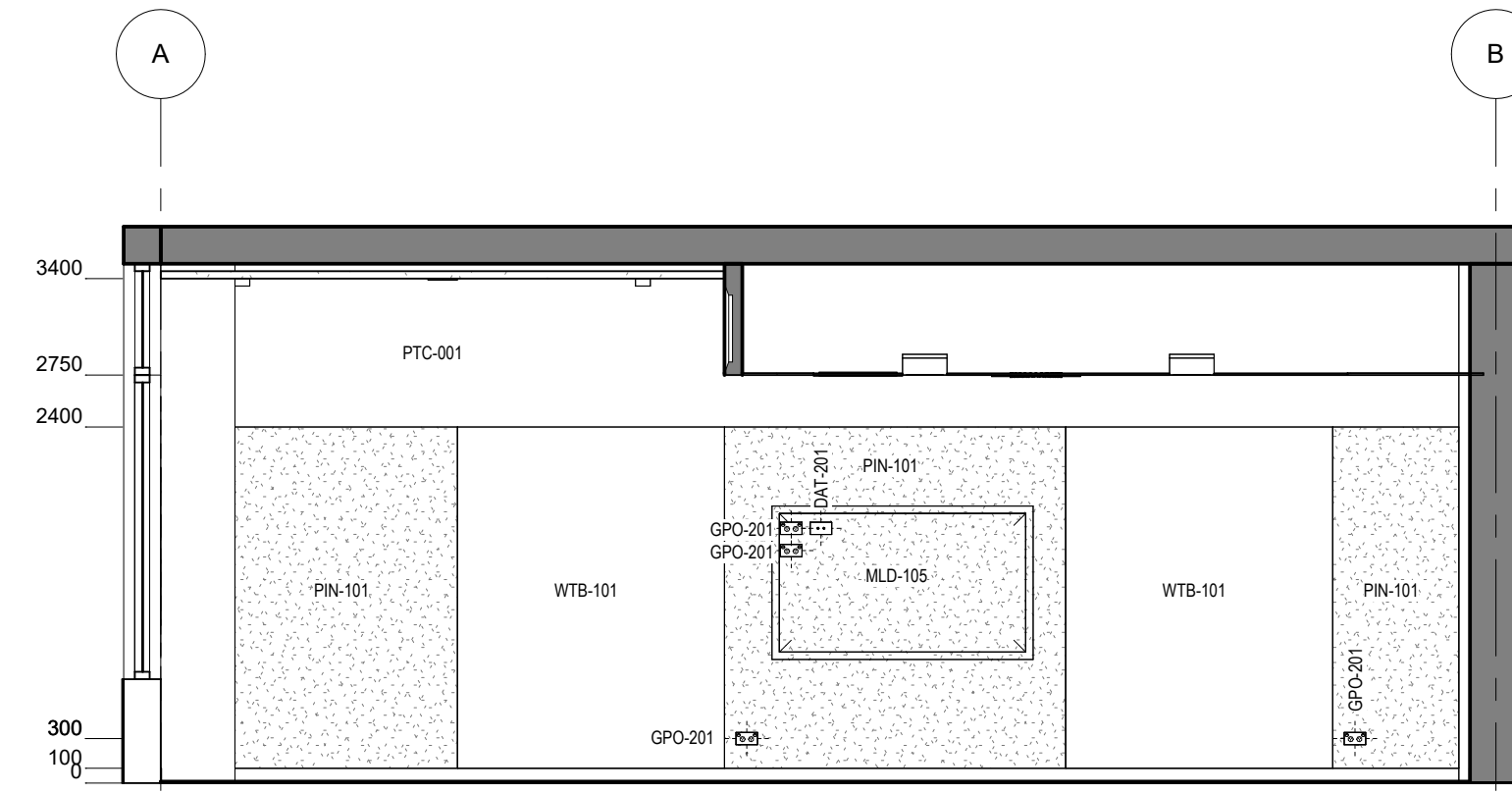
DRW	CHK	APP	DATE <b>2025/07/01</b>	SCALE <b>1 : 500 @A3</b>
-----	-----	-----	---------------------------	-----------------------------

DRAWING NO.  
**PAT-SINSW-GLS-HS101- DR-K-0111**

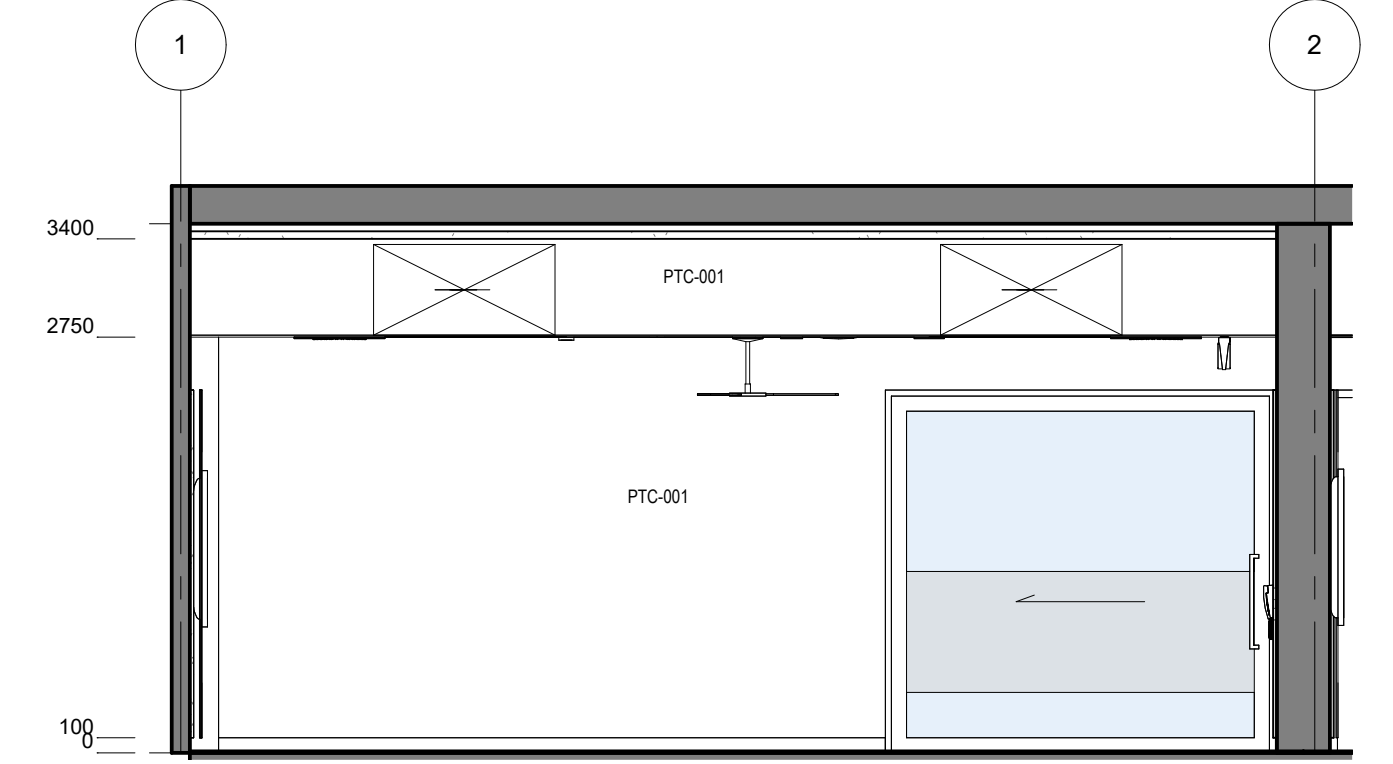
REV  
**P06**



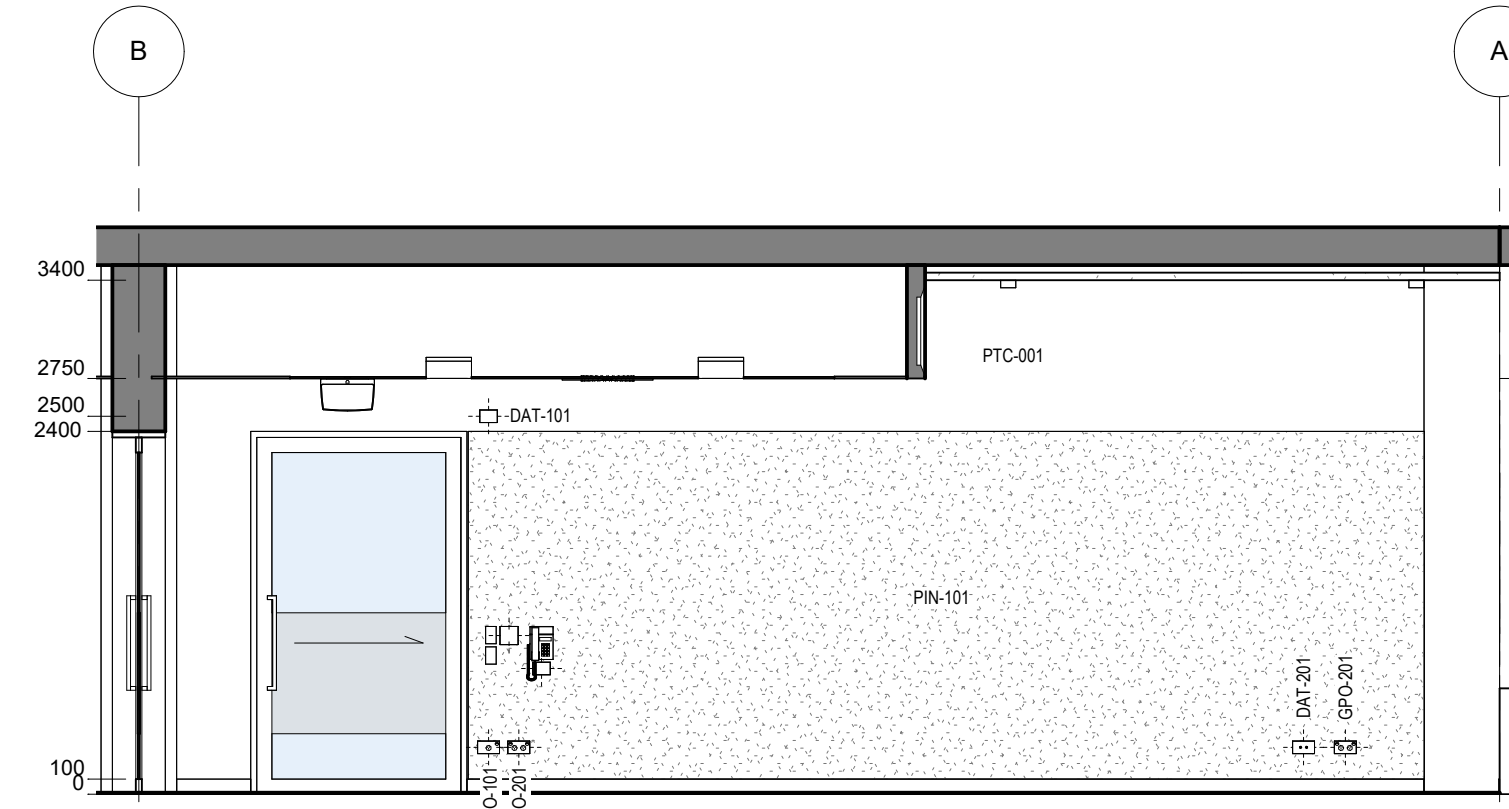
**0** HS - GLS - TYPICAL GLS - FFE PLAN  
1 : 50



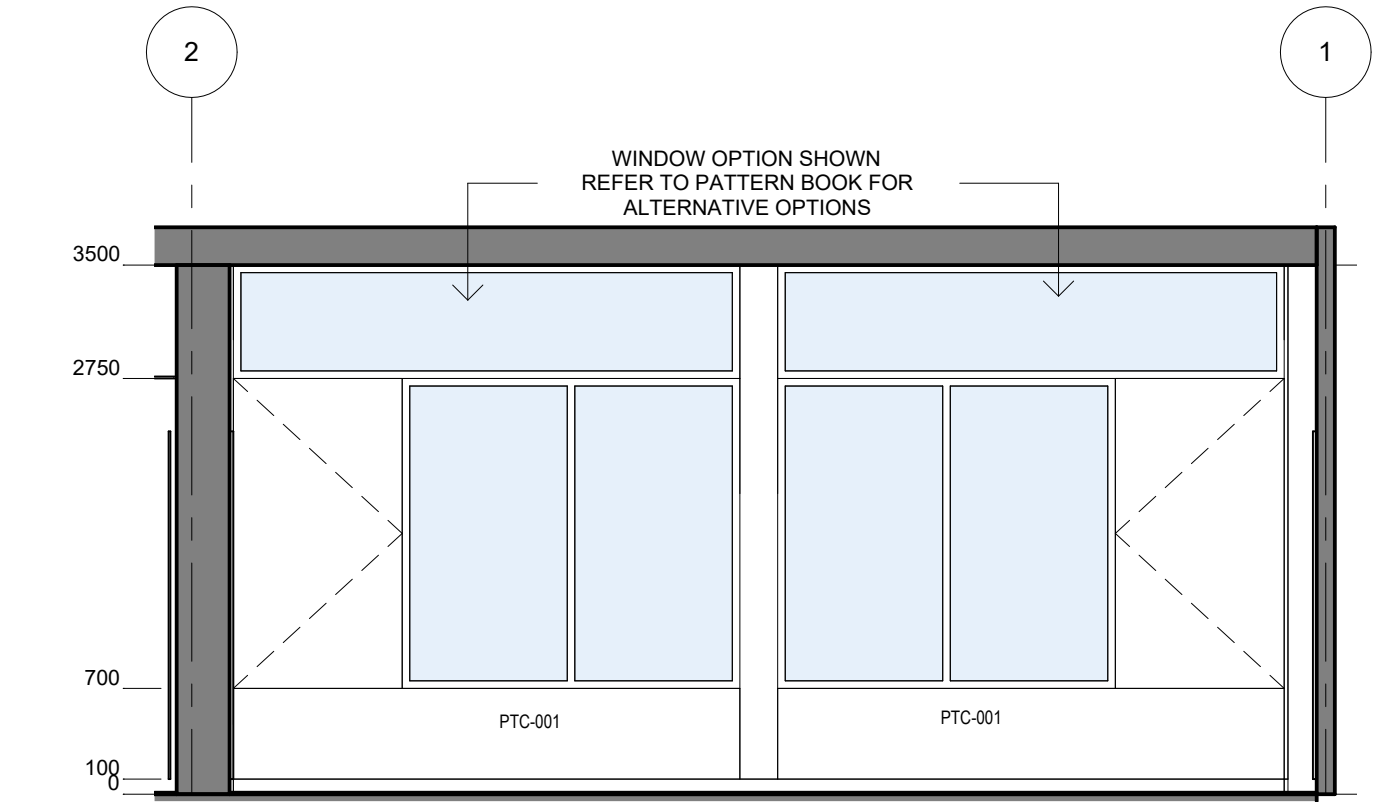
**1** HS - GLS - TYPICAL GLS - ELEVATION  
1 : 50



**2** HS - GLS - TYPICAL GLS - ELEVATION  
1 : 50



**3** HS - GLS - TYPICAL GLS - ELEVATION  
1 : 50



**4** HS - GLS - TYPICAL GLS - ELEVATION  
1 : 50

HS - GENERAL LEARNING SPACE - POWER & DATA SCHEDULE		
CODE	DESCRIPTION	QTY
DAT-101	DATA OUTLET - Single - Wall Mount	2
DAT-201	DATA OUTLET - Double - Wall Mount	2
DAT-202	DATA OUTLET - Double - Ceiling Mount	1
GPO-101	GPO - Single - Wall Mount	1
GPO-201	GPO - Double - Wall Mount	6
MEC-201	CONTROL PANEL - Airconditioning	1
MLD-105	MULTI LEARNING DISPLAY - Wall Mounted - Height Adjustable - Type 5	1
SWT-101	SWITCH - Light	1
SWT-102	SWITCH - Fan	1
TEL-101	TELEPHONE - Wall Mount	1
WAP-102	DATA - Wireless Access Point - Ceiling Mounted	1

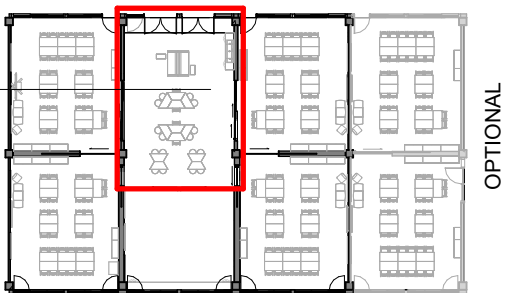
HS - GENERAL LEARNING SPACE - FFE SCHEDULE					
CODE	DESCRIPTION	IMAGE	QTY	GROUP	COMMENTS
CFA-101	FLOOR ANCHOR - Cart		1	2	
CHR-110	CHAIR - Student - HS - Stackable		30	2	
CHR-251	CHAIR - Task - Staff		1	2	
DSK-151	DESK - Teacher - Mobile		1	2	

HS - GENERAL LEARNING SPACE - FFE SCHEDULE					
CODE	DESCRIPTION	IMAGE	QTY	GROUP	COMMENTS
MLD-105	MULTI LEARNING DISPLAY - Wall Mounted - Height Adjustable - Type 5		1	1	
STG-101	STORAGE GLS - Mobile - Double Door - Lockable		4	2	Commercial grade castors with lockable option
STG-102	STORAGE GLS - Mobile - Single - Lockable		1	2	Commercial grade castors with lockable option
TBL-151	TABLE - Rectangular - Height Adjustable - 1200W x 600D		15	2	Writable table top

HS - GENERAL LEARNING SPACE - FFE SCHEDULE					
CODE	DESCRIPTION	IMAGE	QTY	GROUP	COMMENTS
TRL-101	TROLLEY - Laptop		1	2	1 LAPTOP TROLLEY PER HUB
WTB-101	WHITEBOARD - Fixed		2	1	



<b>Room Name</b>	LEARNING COMMONS		
<b>Hub Name</b>	HS 101 GENERAL LEARNING SPACES		
<b>Facility ID</b>	HS101.03		
<b>Item</b>	<b>Room Data</b>	<b>EFSG Link</b>	<b>Comments</b>
<b>Area Function</b>	The LC offers more opportunities for students to collaborate and work with diverse groups of peers, to be directly accessible by 4 GLS.		Refer to SI Design Requirements - Technical Requirements and RDS input
<b>Provisional Areas</b>	110m <sup>2</sup> measured to building grid, including area for PAA.		
<b>Number of Occupants</b>	120-144 *(with MPR) students and 4-5 teachers		
<b>Functional Relationship Considerations</b>	Line of sight to GLS and Multipurpose Room Flexibility of openings to GLS Adjacent to PAA		
<b>Other Relevant Info/ Gaps</b>	Requires unencumbered space and storage of furniture items not in use to be considered to maximise area for student activity. Area of vinyl flooring can be used to define function of learning activities.		
<b>ESD Category</b>	Secondary		
<b>Floor &amp; Skirting</b>	Refer to Finishes Plan & Elevation Drawings. Skirting to suit floor finish.	<a href="https://tinyurl.com/EFSG-Finish">https://tinyurl.com/EFSG-Finish</a>	
<b>Ceiling Type</b>	Refer to RCP Drawing	<a href="https://tinyurl.com/EFSG-Ceilings">https://tinyurl.com/EFSG-Ceilings</a>	
<b>Wall</b>	Refer to Finishes Plan & Elevation Drawings.	<a href="https://tinyurl.com/EFSG-Walls">https://tinyurl.com/EFSG-Walls</a>	
<b>Doors</b>	Refer to Pattern Book	<a href="https://tinyurl.com/EFSG-Doors">https://tinyurl.com/EFSG-Doors</a>	
<b>Windows</b>	Refer to Pattern Book	<a href="https://tinyurl.com/EFSG-Windows">https://tinyurl.com/EFSG-Windows</a>	
<b>Acoustic</b>	Refer to EFSG and relevant standards/ codes. Note: Further consultant input required.	<a href="https://tinyurl.com/EFSG-Acoustic">https://tinyurl.com/EFSG-Acoustic</a>	
<b>Ventilation</b>	Refer to Pattern Book	<a href="https://tinyurl.com/EFSG-Ventilation">https://tinyurl.com/EFSG-Ventilation</a>	
<b>Light</b>	DAYLIGHT: Access to natural light required. / BROWN OUT: Space requires glare reducing brown out capabilities to all windows.	<a href="https://tinyurl.com/EFSG-Lighting">https://tinyurl.com/EFSG-Lighting</a>	
<b>Illumination</b>	LUX LEVEL: 240 lux. / LIGHTING CONTROL: N/A	<a href="https://tinyurl.com/EFSG-Illumination">https://tinyurl.com/EFSG-Illumination</a>	
<b>Cooling</b>	FAN: Required. / COOLING: Required, with operational controls separate to GLS.	<a href="https://tinyurl.com/EFSG-Cooling">https://tinyurl.com/EFSG-Cooling</a>	
<b>Heating</b>	HEATING: Required, with operational controls separate to GLS	<a href="https://tinyurl.com/EFSG-Heating">https://tinyurl.com/EFSG-Heating</a>	
<b>Gas</b>	NIL	<a href="https://tinyurl.com/EFSG-Gas">https://tinyurl.com/EFSG-Gas</a>	
<b>ICT</b> (FOR QUANTITIES REFER TO THE ROOM'S POWER & DATA SCHEDULE)	LOCATION/SERVICE: (CONFIGURATION, INSTALLATION HEIGHT, USAGE). ROOM: DAT-201, 300mm with room controls, GPO-201, 300mm, General usage. AV: Provision for Mobile device, Power only. WAP: DAT-202, WAP-102, Ceiling centrally positioned. Wireless point PHONE: N/A BMS/IOT: DAT-101, 2400-3000mm above room controls, Provision for future use. HEARING: N/A CLEANER/UTILITY: GPO-101, 300mm, At entry door near room controls	<a href="https://tinyurl.com/EFSG-Electrical">https://tinyurl.com/EFSG-Electrical</a>  <a href="https://tinyurl.com/EFSG-Comms">https://tinyurl.com/EFSG-Comms</a>	
<b>Security</b>	SECURITY LEVEL: Category A - Low Security Level applies.	<a href="https://tinyurl.com/EFSG-Security">https://tinyurl.com/EFSG-Security</a>	
<b>Water</b>	COLD WATER: Required to wash trough in PAA.	<a href="https://tinyurl.com/EFSG-Water">https://tinyurl.com/EFSG-Water</a>	
<b>Drainage</b>	Required to wash trough in PAA.	<a href="https://tinyurl.com/EFSG-Drainage">https://tinyurl.com/EFSG-Drainage</a>	
<b>Fire Protection</b>	FIRE EXTINGUISHER/ BLANKET: Portable fire extinguisher required where Fire Hose Reel coverage not provided to comply with NCC. / FIRE HOSE REEL: As required to comply with NCC.	<a href="https://tinyurl.com/EFSG-FireProtection">https://tinyurl.com/EFSG-FireProtection</a>	
<b>Keying</b>	KEYING GENERAL: Keyed alike - Learning Facility. / MASTER KEYING: Master keyed - Learning Spaces (LS).	<a href="https://tinyurl.com/EFSG-Keying">https://tinyurl.com/EFSG-Keying</a>	
<b>Signage</b>	AMS room identification door signage (variable - number of room sequential within block). Wayfinding signage in accordance with AS 1428.4.	<a href="https://tinyurl.com/EFSG-Signage">https://tinyurl.com/EFSG-Signage</a>	



OPTIONAL

NOTE: FOR OUTDOOR LEARNING COMMONS ALLOW FOR 4 EXTERNAL GPOS AND 1 EXTERNAL WAP CENTRALLY POSITIONED. WALL MOUNT IF CEILING ABOVE 3M



www.schoolinfrastructure.nsw.gov.au

FOR IMPLEMENTATION/USE OF THE SI PATTERN BOOK, NOTE THE FOLLOWING:  
INTELLECTUAL PROPERTY  
Refer to: SI Pattern Book - Introduction, Copyright and Disclaimer.  
AGREEMENT OF USE  
Refer to: SI Pattern Book - Introduction, Copyright and Disclaimer.  
SINSW CONTACT  
Refer to: SI Pattern Book - Introduction, Copyright and Disclaimer.

DRAWING NOTES

REV	BY	DATE	DESCRIPTION
3	CHS	2025/02/05	REVISED ICT DATA - FOR INFORMATION
4	NC	2025/03/07	FOR INFORMATION
P01	NG	2025/03/21	FOR INFORMATION
P02	NC	2025/04/04	FOR INFORMATION
P03	NC	2025/05/02	FOR INFORMATION
P04	NC	2025/05/15	FOR INFORMATION
P05	NC	2025/05/29	FOR INFORMATION
P06	SINSW	2025/07/01	ISSUED FOR EFSG 2025r0

PROJECT NAME  
**PATTERN BOOK**

DRAWING TITLE  
**HS101.03 - GLS - LEARNING COMMONS - RDS**

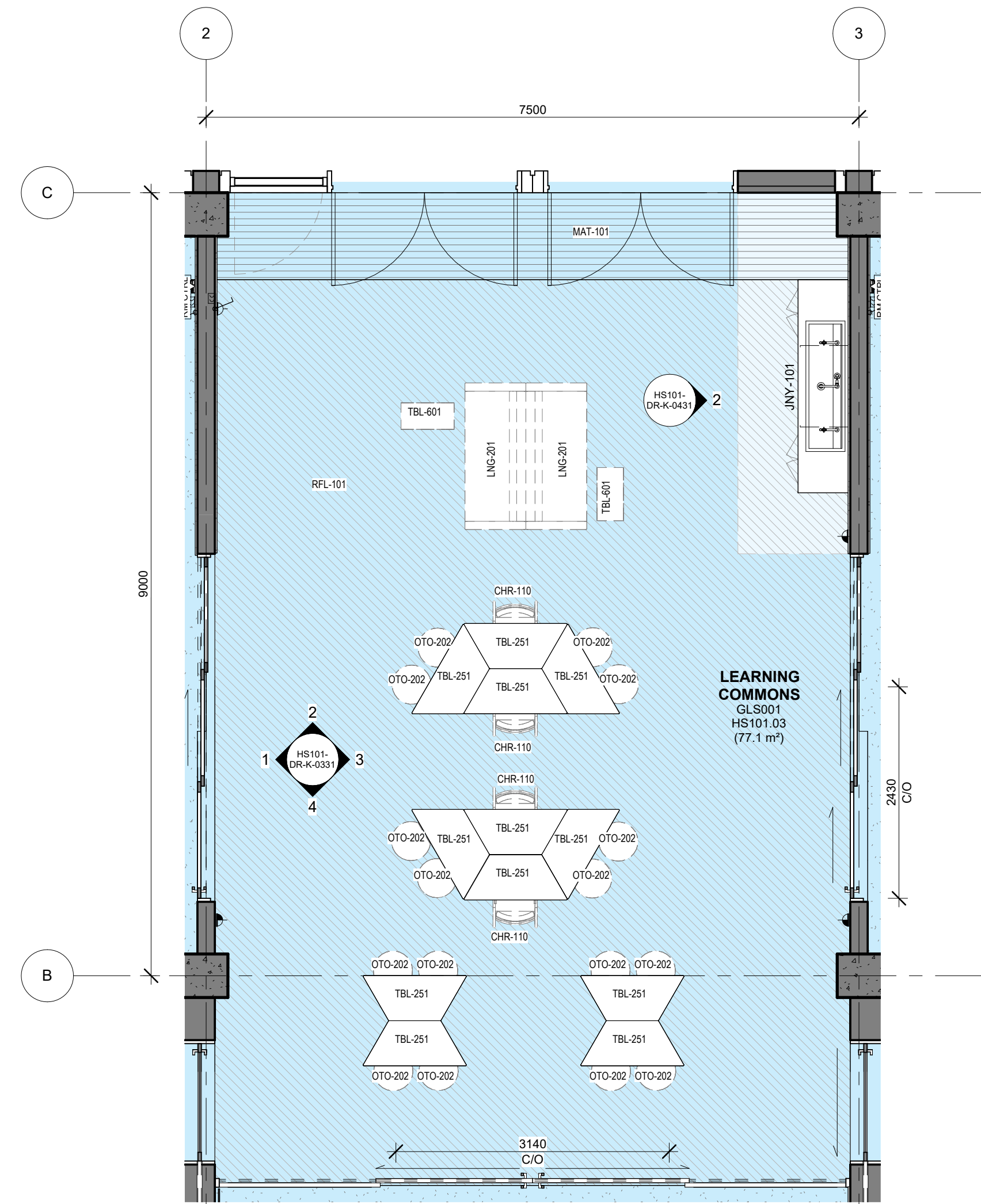
PROJECT NUMBER  
**PXXXXXX**

STATUS  
**FOR INFORMATION**

DRW	CHK	APP	DATE <b>2025/07/01</b>	SCALE <b>1 : 500 @A3</b>
-----	-----	-----	---------------------------	-----------------------------

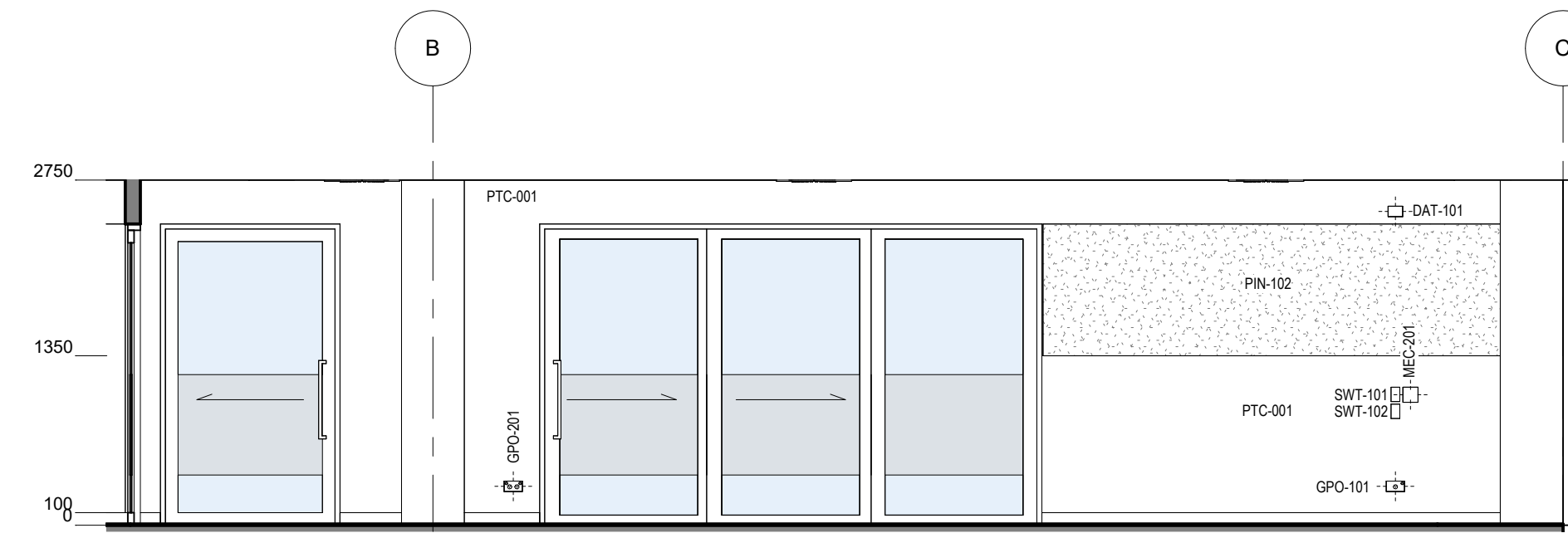
DRAWING NO.  
**PAT-SINSW-GLS-HS101- DR-K-0311**

REV  
**P06**

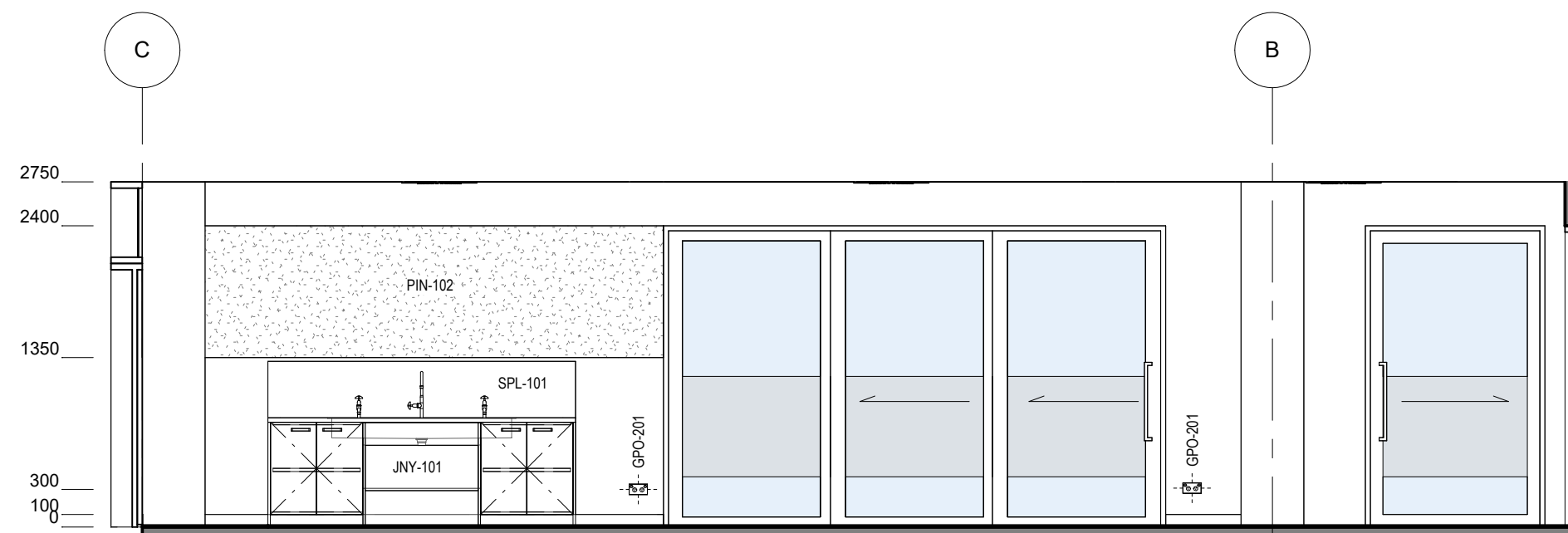


**0 HS - GLS - LEARNING COMMONS - FFE PLAN**  
1 : 50

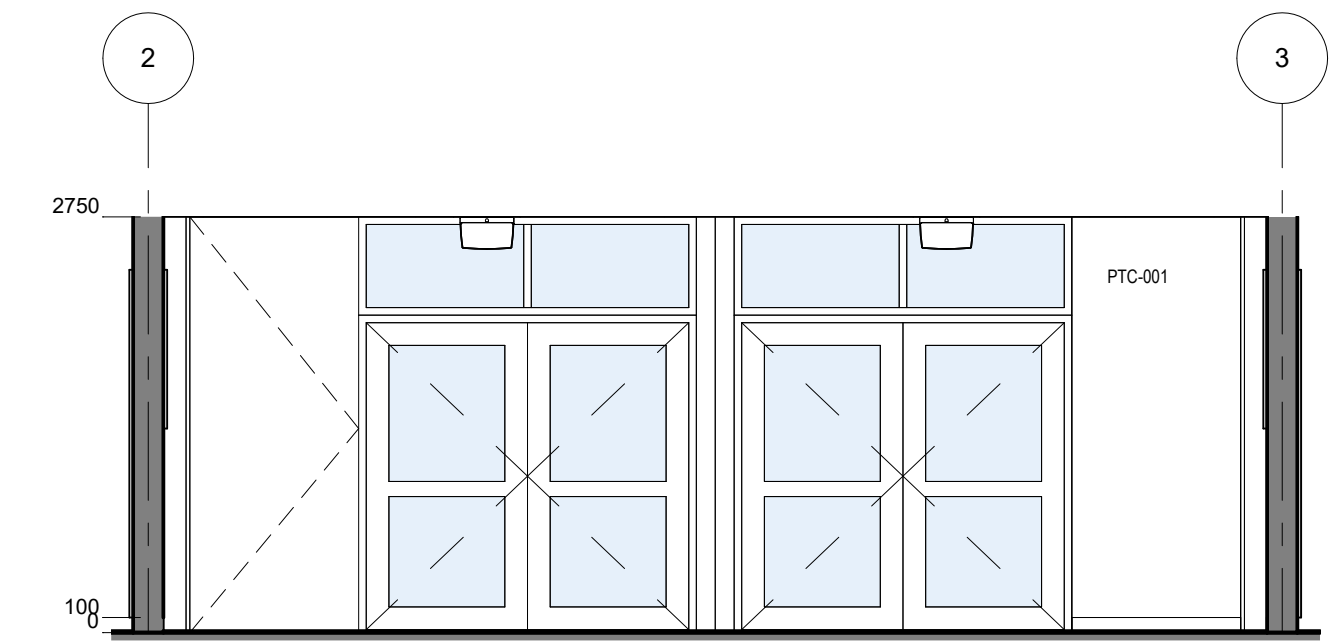
HS - LEARNING COMMONS - POWER & DATA SCHEDULE		
CODE	DESCRIPTION	QTY
DAT-101	DATA OUTLET - Single - Wall Mount	1
DAT-202	DATA OUTLET - Double - Ceiling Mount	1
GPO-101	GPO - Single - Wall Mount	1
GPO-201	GPO - Double - Wall Mount	2
WAP-102	DATA - Wireless Access Point - Ceiling Mounted	1



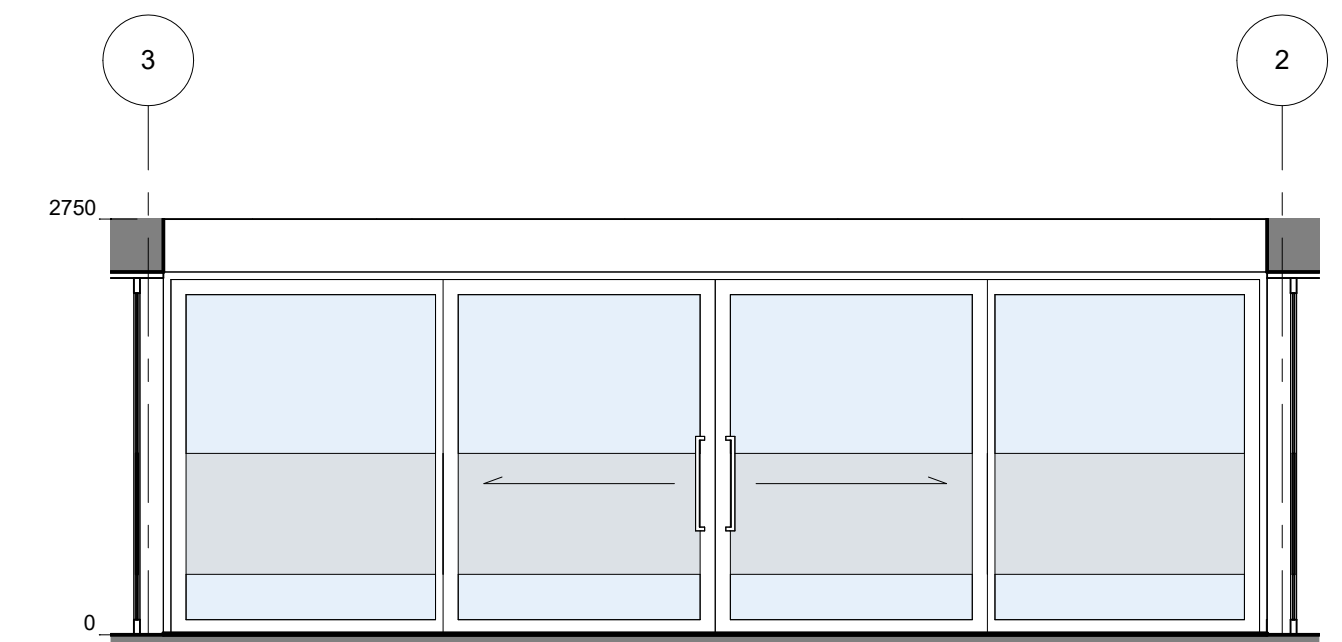
**1 HS - GLS - LEARNING COMMONS - ELEVATION**  
1 : 50



**3 HS - GLS - LEARNING COMMONS - ELEVATION**  
1 : 50



**2 HS - GLS - LEARNING COMMONS - ELEVATION**  
1 : 50

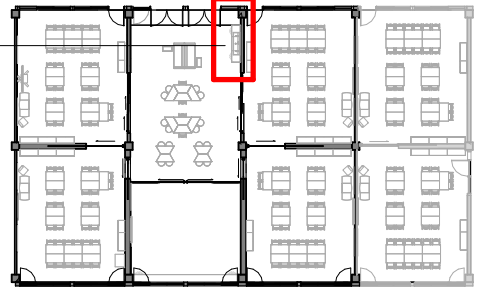


**4 HS - GLS - LEARNING COMMONS - ELEVATION**  
1 : 50

HS - LEARNING COMMONS - FFE SCHEDULE					
CODE	DESCRIPTION	IMAGE	QTY	GROUP	COMMENTS
CHR-110	CHAIR - Student - HS - Stackable		4	2	
LNG-201	LOUNGE - High Back - 2 Seater		2	2	
OTO-202	OTTOMAN - Student - HS		16	2	
TBL-251	TABLE - Trapezoidal - Student - 1200W x 520D x 720H		12	2	Writable table top
TBL-601	TABLE - Coffee - Rectangular - 610W x 310D x 685H		2	2	



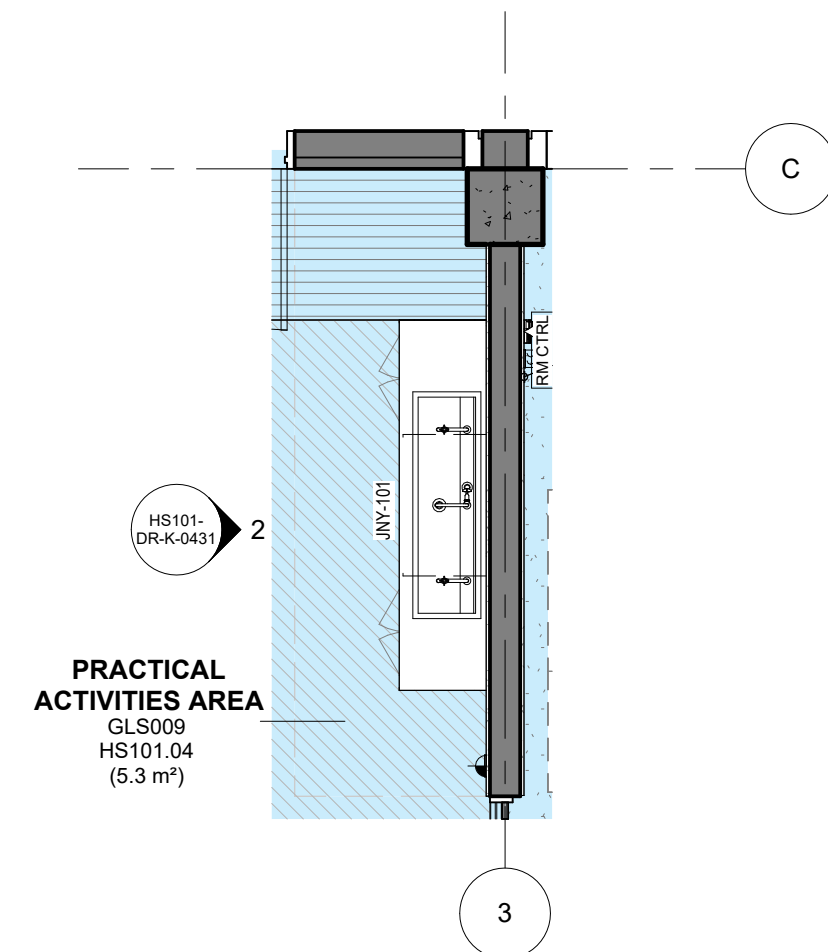
Room Name	PRACTICAL ACTIVITIES AREA
Hub Name	HS 101 GENERAL LEARNING SPACES
Facility ID	HS101.04



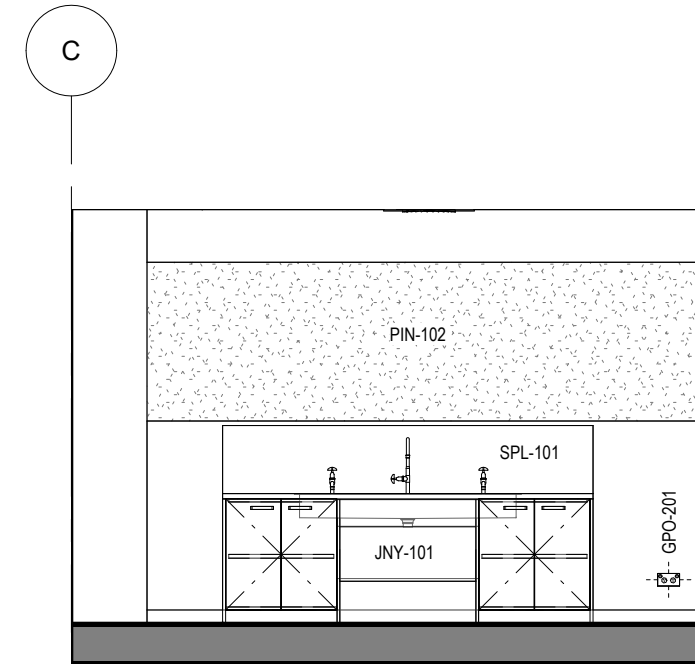
Item	Room Data	EFSG Link	Comments
Area Function	Practical Activity Area (PAA) supports opportunities for practical (hands on) activities within the LC.		Refer to SI Design Requirements - Technical Requirements and RDS input
Provisional Areas	1 PAA area per LC required. Included as cabinetry.		
Number of Occupants			
Functional Relationship Considerations			
Other Relevant Info/ Gaps			
ESD Category	Primary		
Floor & Skirting	Refer to Finishes Plan Drawing	<a href="https://tinyurl.com/EFSG-Finish">https://tinyurl.com/EFSG-Finish</a>	
Ceiling Type	Refer to RCP Drawing	<a href="https://tinyurl.com/EFSG-Ceilings">https://tinyurl.com/EFSG-Ceilings</a>	
Wall	IMPACT RESISTANCE: Impact resistant walls required. Apply splashback.	<a href="https://tinyurl.com/EFSG-Walls">https://tinyurl.com/EFSG-Walls</a>	
Doors	N/A	<a href="https://tinyurl.com/EFSG-Doors">https://tinyurl.com/EFSG-Doors</a>	
Windows	N/A	<a href="https://tinyurl.com/EFSG-Windows">https://tinyurl.com/EFSG-Windows</a>	
Acoustic	N/A	<a href="https://tinyurl.com/EFSG-Acoustic">https://tinyurl.com/EFSG-Acoustic</a>	
Ventilation	N/A	<a href="https://tinyurl.com/EFSG-Ventilation">https://tinyurl.com/EFSG-Ventilation</a>	
Light	N/A	<a href="https://tinyurl.com/EFSG-Lighting">https://tinyurl.com/EFSG-Lighting</a>	
Illumination	LUX LEVEL: 240 lux. / LIGHTING CONTROL: N/A	<a href="https://tinyurl.com/EFSG-Illumination">https://tinyurl.com/EFSG-Illumination</a>	
Cooling	N/A	<a href="https://tinyurl.com/EFSG-Cooling">https://tinyurl.com/EFSG-Cooling</a>	
Heating	N/A	<a href="https://tinyurl.com/EFSG-Heating">https://tinyurl.com/EFSG-Heating</a>	
Gas	NIL	<a href="https://tinyurl.com/EFSG-Gas">https://tinyurl.com/EFSG-Gas</a>	
ICT (FOR QUANTITIES REFER TO THE ROOM'S POWER & DATA SCHEDULE)	N/A	<a href="https://tinyurl.com/EFSG-Electrical">https://tinyurl.com/EFSG-Electrical</a>  <a href="https://tinyurl.com/EFSG-Comms">https://tinyurl.com/EFSG-Comms</a>	
Security	N/A	<a href="https://tinyurl.com/EFSG-Security">https://tinyurl.com/EFSG-Security</a>	
Water	COLD WATER: Required to wash trough in PAA.	<a href="https://tinyurl.com/EFSG-Water">https://tinyurl.com/EFSG-Water</a>	
Drainage	DRAINAGE FIXTURES: 3 trade waste drainage outlets. DRAINAGE - OTHER: Trade waste drainage to dilution pit.	<a href="https://tinyurl.com/EFSG-Drainage">https://tinyurl.com/EFSG-Drainage</a>	
Fire Protection	FIRE HOSE REEL: As required to comply with NCC.	<a href="https://tinyurl.com/EFSG-FireProtection">https://tinyurl.com/EFSG-FireProtection</a>	
Keying	N/A	<a href="https://tinyurl.com/EFSG-Keying">https://tinyurl.com/EFSG-Keying</a>	
Signage	N/A	<a href="https://tinyurl.com/EFSG-Signage">https://tinyurl.com/EFSG-Signage</a>	

DRAWING NOTES

REV	BY	DATE	DESCRIPTION
P01	NC	2025/05/15	FOR INFORMATION
P02	NC	2025/05/29	FOR INFORMATION
P03	SINSW	2025/07/01	ISSUED FOR EFSG 2025r0



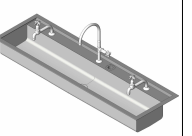
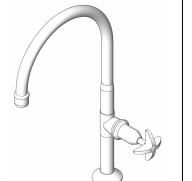
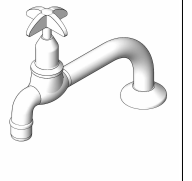
**1** HS - GLS - PRACTICAL ACTIVITIES AREA - FFE PLAN  
1 : 50



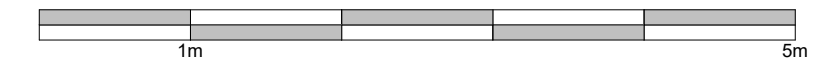
**2** HS - GLS - PRACTICAL ACTIVITIES AREA - ELEVATION  
1 : 50

NOTE: REFER TO DRAWING 5001 FOR STANDARD MOUNTING HEIGHTS

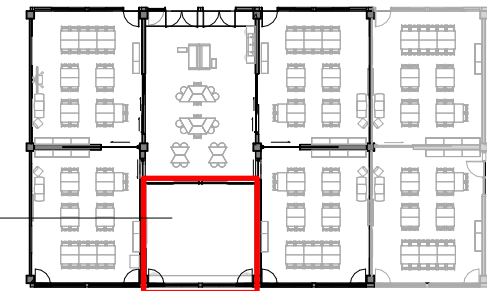
HS - PRACTICAL ACTIVITIES AREA - POWER & DATA SCHEDULE		
CODE	DESCRIPTION	QTY
GPO-201	GPO - Double - Wall Mount	1

HS - PRACTICAL ACTIVITIES AREA - FFE SCHEDULE					
CODE	DESCRIPTION	IMAGE	QTY	GROUP	COMMENTS
SNK-101	SINK - Trough - 1500mm		1	2	
TAP-112	TAP - Gooseneck - Tall		1	1	
TAP-113	TAP - Gooseneck - Short		2	1	

NOTE: ALL IMAGES ARE INDICATIVE ONLY.



Room Name	MULTIPURPOSE
Hub Name	HS 101 GENERAL LEARNING SPACES
Facility ID	HS101.05



OPTIONAL

Item	Room Data	EFSG Link	Comments
Area Function	The MPS can be used by small or mid-sized groups of students working either with staff or independently. The MPS may also be used to support student readiness to learn.		Refer to SI Design Requirements - Technical Requirements and RDS input
Provisional Areas	1 MPS area per LC required. Included as a room.		
Number of Occupants	Small group learning - Varies depending FFE layout and use of room. Max occupancy based on 2m <sup>2</sup> / person.		
Functional Relationship Considerations	Accessible to Learning Commons		
Other Relevant Info/ Gaps	Should not be used as storage. *Additionally, the size of the multi- purpose space and Learning Commons is currently under review. The size of these spaces on current projects under		
ESD Category	Secondary		
Floor & Skirting	Refer to Finishes Plan & Elevation Drawings. Skirting: SKT-101.	<a href="https://tinyurl.com/EFSG-Finish">https://tinyurl.com/EFSG-Finish</a>	
Ceiling Type	Refer to RCP Drawing	<a href="https://tinyurl.com/EFSG-Ceilings">https://tinyurl.com/EFSG-Ceilings</a>	
Wall	Refer to Finishes Plan & Elevation Drawings. Wall strengthening required for application of displays, shelving, etc	<a href="https://tinyurl.com/EFSG-Walls">https://tinyurl.com/EFSG-Walls</a>	
Doors	Refer to Pattern Book	<a href="https://tinyurl.com/EFSG-Doors">https://tinyurl.com/EFSG-Doors</a>	
Windows	Refer to Pattern Book	<a href="https://tinyurl.com/EFSG-Windows">https://tinyurl.com/EFSG-Windows</a>	
Acoustic	Refer to EFSG and relevant standards/ codes. Note: Further consultant input required.	<a href="https://tinyurl.com/EFSG-Acoustic">https://tinyurl.com/EFSG-Acoustic</a>	
Ventilation	Refer to Pattern Book	<a href="https://tinyurl.com/EFSG-Ventilation">https://tinyurl.com/EFSG-Ventilation</a>	
Light	DAYLIGHT: Access to natural light required. / BROWN OUT: Space requires glare reducing brown out capabilities to all windows.	<a href="https://tinyurl.com/EFSG-Lighting">https://tinyurl.com/EFSG-Lighting</a>	
Illumination	LUX LEVEL: 240 lux. / LIGHTING CONTROL: N/A	<a href="https://tinyurl.com/EFSG-Illumination">https://tinyurl.com/EFSG-Illumination</a>	
Cooling	FAN: Required. / COOLING: Required.	<a href="https://tinyurl.com/EFSG-Cooling">https://tinyurl.com/EFSG-Cooling</a>	
Heating	HEATING: Required	<a href="https://tinyurl.com/EFSG-Heating">https://tinyurl.com/EFSG-Heating</a>	
Gas	NIL	<a href="https://tinyurl.com/EFSG-Gas">https://tinyurl.com/EFSG-Gas</a>	
ICT (FOR QUANTITIES REFER TO THE ROOM'S POWER & DATA SCHEDULE)	LOCATION/SERVICE: (CONFIGURATION, INSTALLATION HEIGHT, USAGE). ROOM: DAT-201 + GPO-201, 300mm, General usage. AV: DAT-201 + GPO-201, MLD-105, Standard MLD layout, MLD, Mini PC, Hearing augmentation, spare WAP: DAT-202, WAP-102, Ceiling centrally positioned. Wireless point PHONE: DAT-101 and TEL-101 as per standard layout, located with room controls. BMS/IOT: DAT-101, 2400-3000mm above room controls, Provision for future use. HEARING: Allowed for with AV CHARGE STATION: GPO-201 CLEANER/UTILITY: GPO-101, 300mm, At entry door near room controls	<a href="https://tinyurl.com/EFSG-Electrical">https://tinyurl.com/EFSG-Electrical</a>  <a href="https://tinyurl.com/EFSG-Comms">https://tinyurl.com/EFSG-Comms</a>	
Security	SECURITY LEVEL: Category A - Low Security Level applies.	<a href="https://tinyurl.com/EFSG-Security">https://tinyurl.com/EFSG-Security</a>	
Water	N/A	<a href="https://tinyurl.com/EFSG-Water">https://tinyurl.com/EFSG-Water</a>	
Drainage	N/A	<a href="https://tinyurl.com/EFSG-Drainage">https://tinyurl.com/EFSG-Drainage</a>	
Fire Protection	FIRE EXTINGUISHER/ BLANKET: Portable fire extinguisher required where Fire Hose Reel coverage not provided to comply with NCC. / FIRE HOSE REEL: As required to comply with NCC.	<a href="https://tinyurl.com/EFSG-FireProtection">https://tinyurl.com/EFSG-FireProtection</a>	
Keying	KEYING GENERAL: Keyed alike - Learning Facility. / MASTER KEYING: Master keyed - Learning Spaces (LS).	<a href="https://tinyurl.com/EFSG-Keying">https://tinyurl.com/EFSG-Keying</a>	
Signage	AMS room identification door signage (variable - number of room sequential within block). Wayfinding signage in accordance with AS 1428.4.	<a href="https://tinyurl.com/EFSG-Signage">https://tinyurl.com/EFSG-Signage</a>	



www.schoolinfrastructure.nsw.gov.au

FOR IMPLEMENTATION/USE OF THE SI PATTERN BOOK, NOTE THE FOLLOWING:

INTELLECTUAL PROPERTY  
Refer to: SI Pattern Book - Introduction, Copyright and Disclaimer.

AGREEMENT OF USE  
Refer to: SI Pattern Book - Introduction, Copyright and Disclaimer.

SINSW CONTACT  
Refer to: SI Pattern Book - Introduction, Copyright and Disclaimer.

DRAWING NOTES

REV	BY	DATE	DESCRIPTION
2	CHS	2024/12/18	REVISED TITLEBLOCK & DRAWING NUMBER
3	NC	2025/03/07	FOR INFORMATION
P01	NG	2025/03/21	FOR INFORMATION
P02	NC	2025/04/04	FOR INFORMATION
P03	NC	2025/05/02	FOR INFORMATION
P04	NC	2025/05/15	FOR INFORMATION
P05	NC	2025/05/29	FOR INFORMATION
P06	SINSW	2025/07/01	ISSUED FOR EFSG 2025r0

PROJECT NAME  
**PATTERN BOOK**

DRAWING TITLE  
**HS101.05 - GLS - MULTIPURPOSE - RDS**

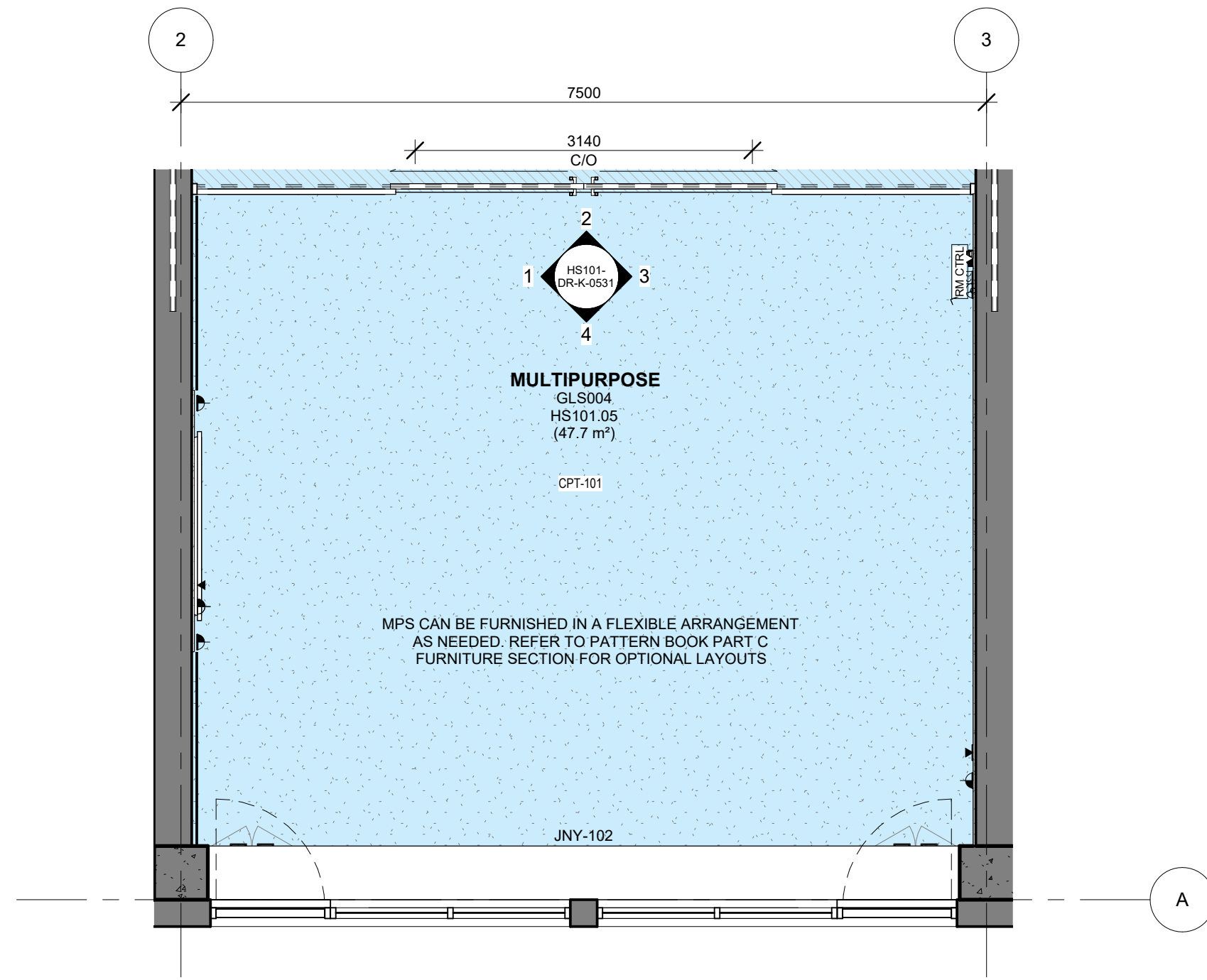
PROJECT NUMBER  
**PXXXXXX**

STATUS  
**FOR INFORMATION**

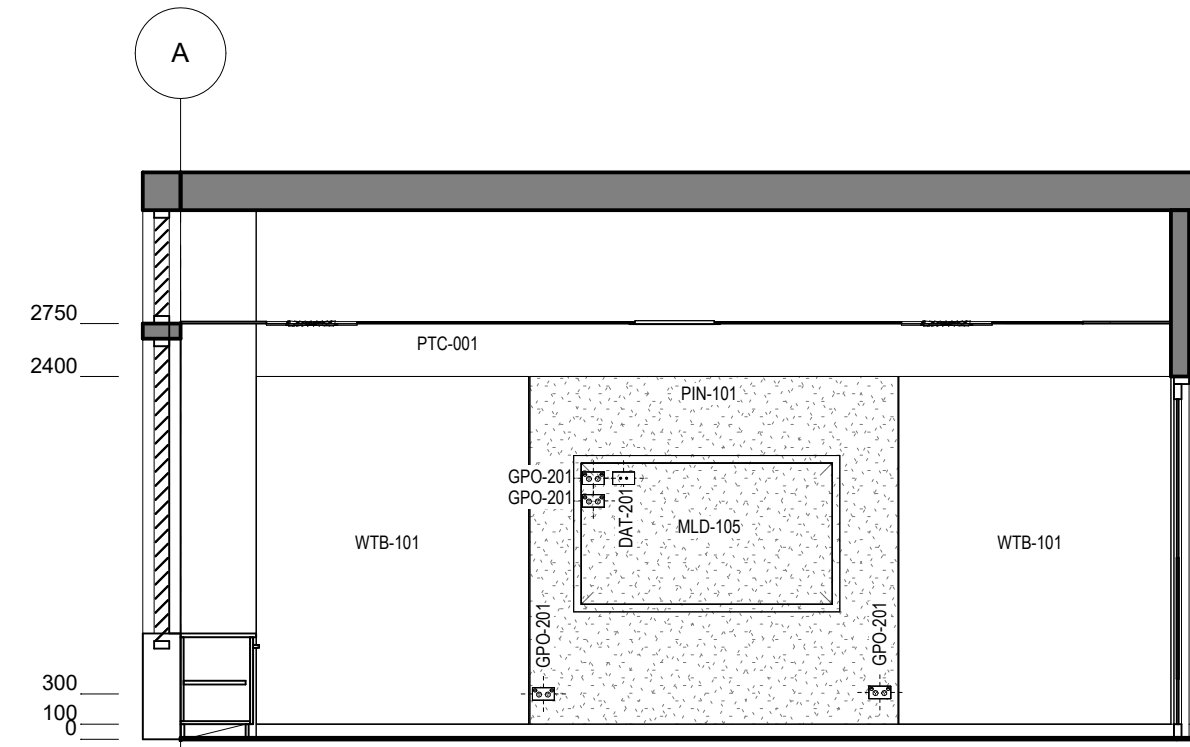
DRW	CHK	APP	DATE 2025/07/01	SCALE 1 : 500 @A3
-----	-----	-----	--------------------	----------------------

DRAWING NO.  
**PAT-SINSW-GLS-HS101- DR-K-0511**

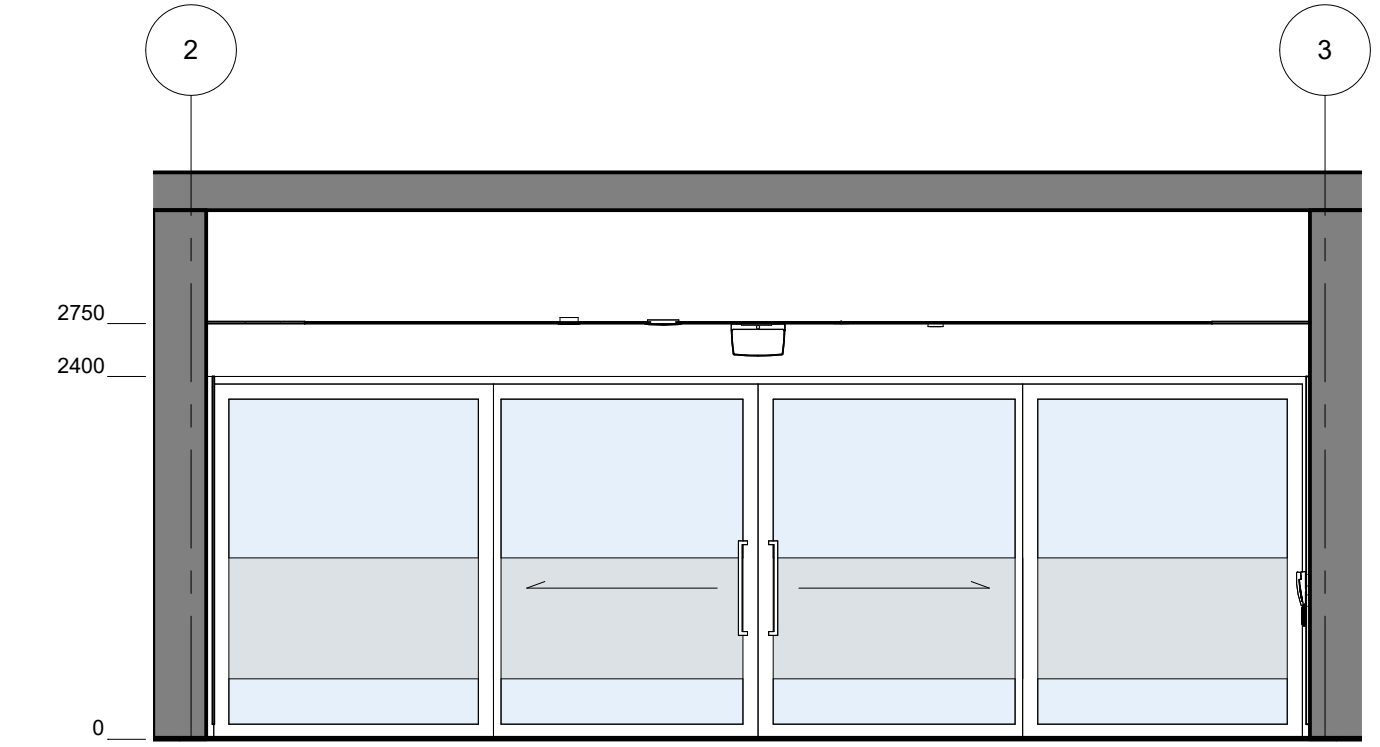
REV  
**P06**



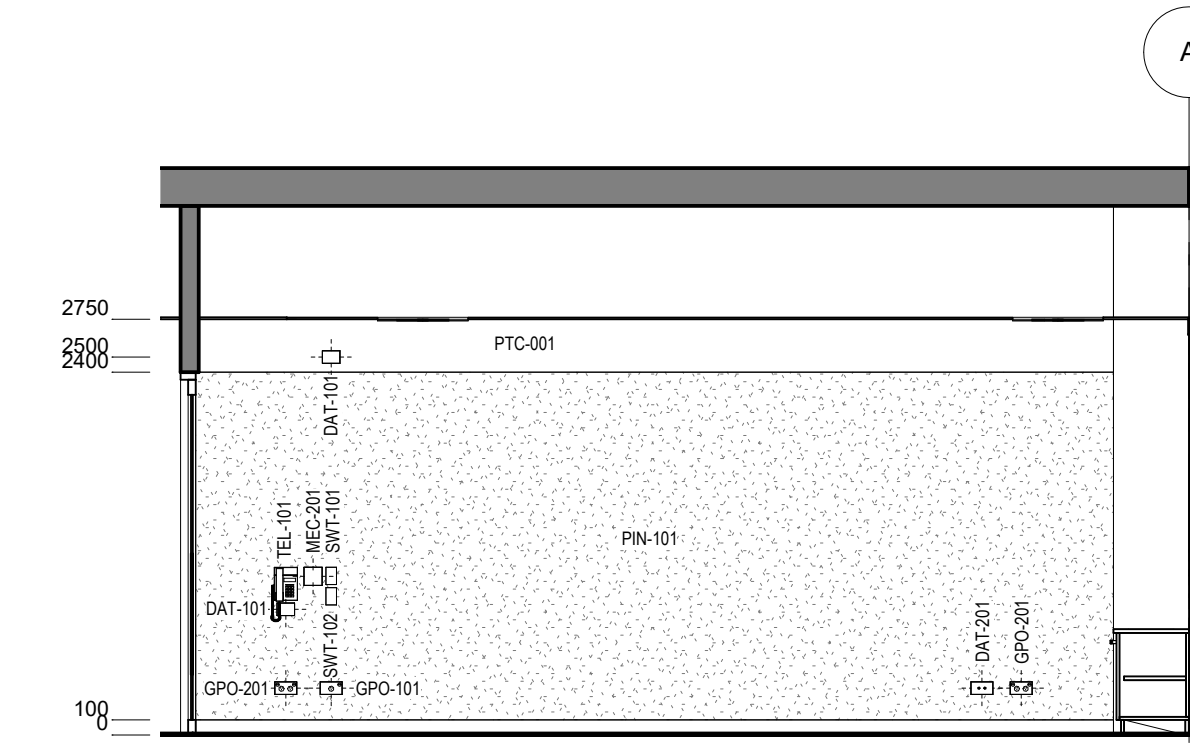
**0 HS - GLS - MULTIPURPOSE - FFE PLAN**  
1 : 50



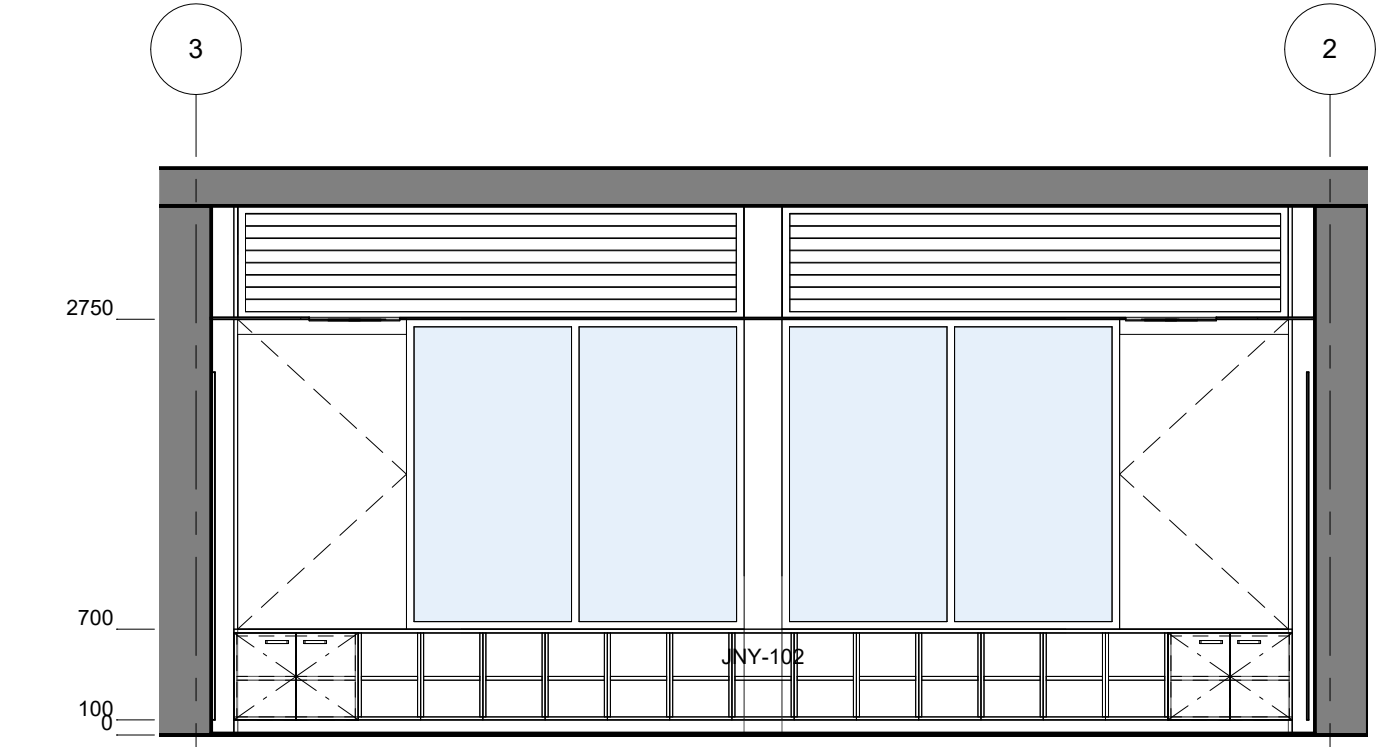
**1 HS - GLS - MULTIPURPOSE - ELEVATION**  
1 : 50



**2 HS - GLS - MULTIPURPOSE - ELEVATION**  
1 : 50



**3 HS - GLS - MULTIPURPOSE - ELEVATION**  
1 : 50



**4 HS - GLS - MULTIPURPOSE - ELEVATION**  
1 : 50

NOTE: REFER TO DRAWING 5001 FOR STANDARD MOUNTING HEIGHTS

HS - MULTIPURPOSE - POWER & DATA SCHEDULE		
CODE	DESCRIPTION	QTY
DAT-101	DATA OUTLET - Single - Wall Mount	1
DAT-201	DATA OUTLET - Double - Wall Mount	2
DAT-202	DATA OUTLET - Double - Ceiling Mount	1
GPO-101	GPO - Single - Wall Mount	1
GPO-201	GPO - Double - Wall Mount	6
MEC-201	CONTROL PANEL - Airconditioning	1
MLD-105	MULTI LEARNING DISPLAY - Wall Mounted - Height Adjustable - Type 5	1
SWT-101	SWITCH - Light	1
SWT-102	SWITCH - Fan	1
TEL-101	TELEPHONE - Wall Mount	1
WAP-102	DATA - Wireless Access Point - Ceiling Mounted	1

HS - MULTIPURPOSE - FFE SCHEDULE					
CODE	DESCRIPTION	IMAGE	QTY	GROUP	COMMENTS
MLD-105	MULTI LEARNING DISPLAY - Wall Mounted - Height Adjustable - Type 5		1	1	
WTB-101	WHITEBOARD - Fixed		1	1	

