

# SSP Hub Layouts

## School for Specific Purposes (SSP)

### Hub layouts

Guidance material for information only

Draft Release - July 2025

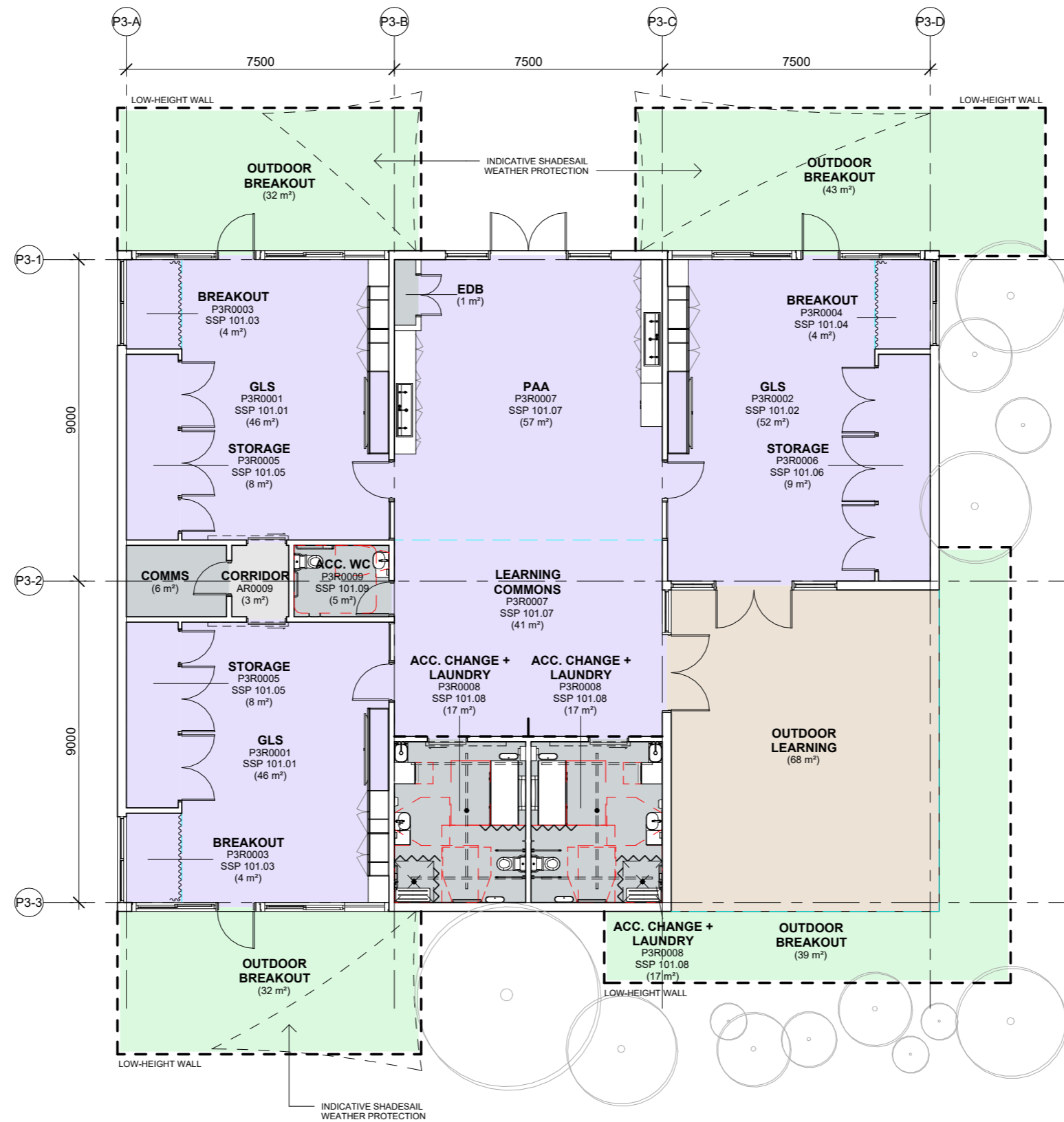
# Schools for Specific Purposes

## Expandable SSP Yield and Capacity Summary

### Rev.0 SSP\_expandable model (single-storey)

SSP Type	GLS	average capacity (student numbers vary, depending on the selected student cohort)	approx minimum Staff Numbers (teaching + non-teaching)	open   play space (sqm/student)
SSP70	10	60 - 70	30	to be confirmed
SSP100	16	80 - 100	38	to be confirmed

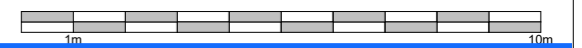
Under development for inclusion in future release



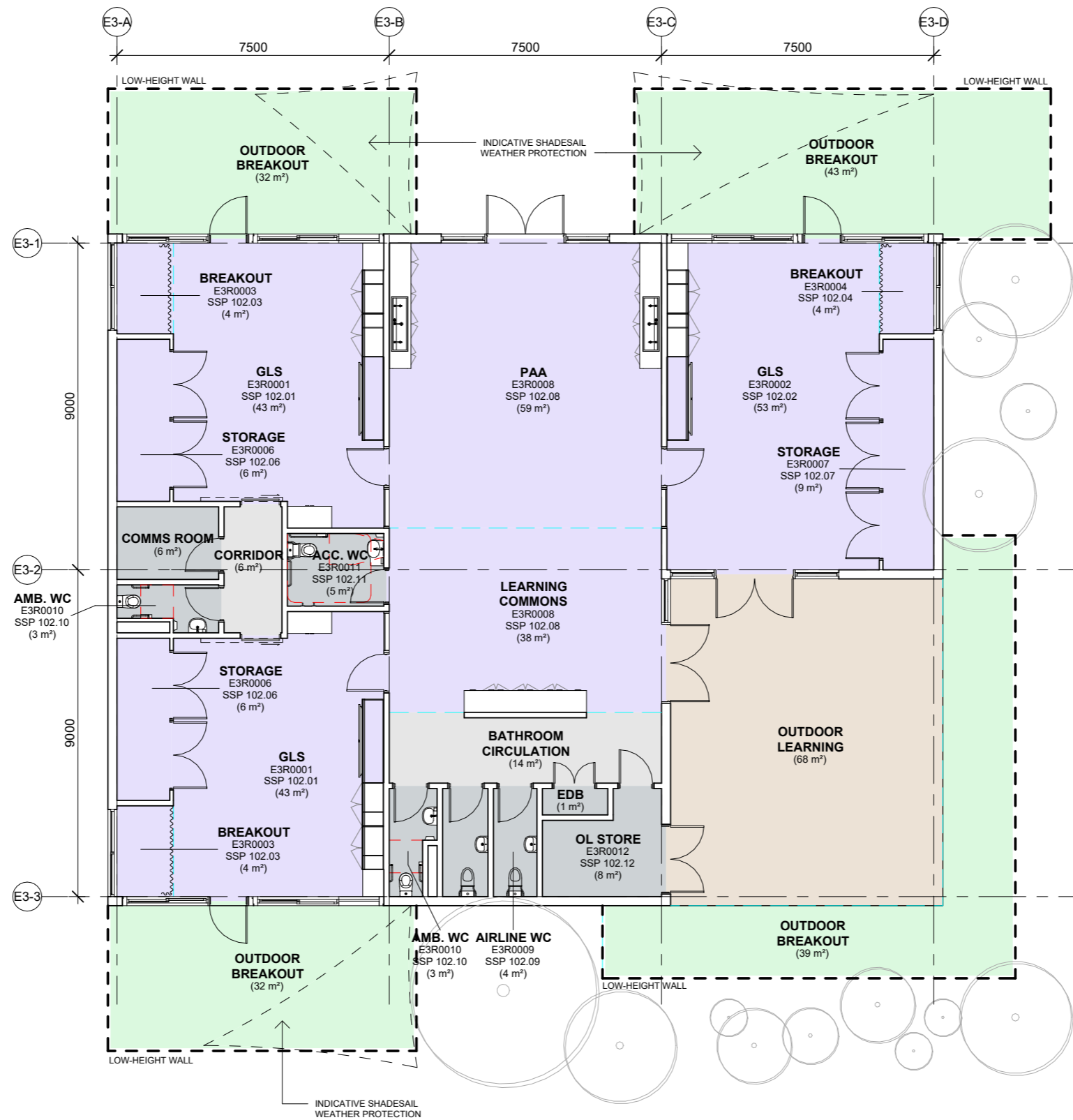
**LEGEND**

- 3 HUB PISO
- CIRCULATION
- OUTDOOR BREAKOUT
- OUTDOOR LEARNING
- SERVICES / AMENITIES

THIS IS A DRAFT ISSUE ONLY.



REV	BY	DATE	DESCRIPTION
A	Arc hite ctus	20/06/2025	PRELIMINARY REVIEW
B	Arc hite ctus	25/06/2025	PATTERNBOOK PRELIMINARY ISSUE



- LEGEND**
- 3 HUB EDBD
  - CIRCULATION
  - OUTDOOR BREAKOUT
  - OUTDOOR LEARNING
  - SERVICES / AMENITIES

THIS IS A DRAFT ISSUE ONLY.



FOR IMPLEMENTATION/USE OF THE SINSW PATTERNBOOK, NOTE THE FOLLOWING:  
 INTELLECTUAL PROPERTY  
 Refer to: SI Patternbook - Introduction, Copyright and Disclaimer.  
 AGREEMENT OF USE  
 Refer to: SI Patternbook - Introduction, Copyright and Disclaimer.  
 SINSW CONTACT  
 Refer to: SI Patternbook - Introduction, Copyright and Disclaimer.

DRAWING NOTES

ARCHITECT

KEY PLAN

REV	BY	DATE	DESCRIPTION
A	Arc hite ctus	20/06/2025	PRELIMINARY REVIEW
B	Arc hite ctus	25/06/2025	PATTERNBOOK PRELIMINARY ISSUE

PROJECT NAME  
**SCHOOLS FOR SPECIFIC PURPOSES  
 MASTERPLAN STAGE 1  
 (PATTERNBOOK)**

PROJECT NO.

STATUS  
**FOR INFORMATION**

DRW	CHK	APP	DATE	SCALE
EL	RF	AD	25/06/2025	1 : 100 @A2

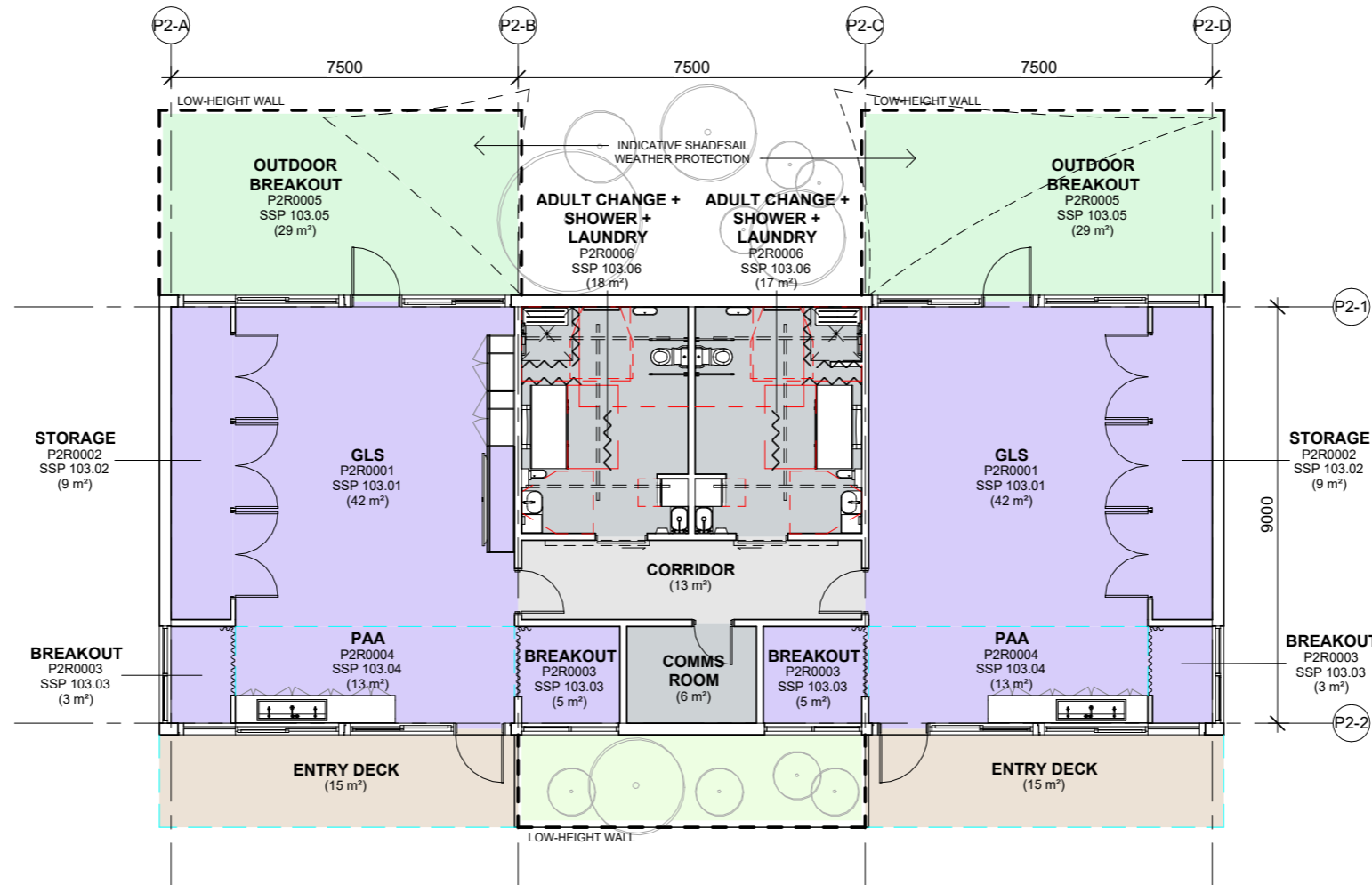
DRAWING TITLE  
**SSP 102 - 3 HUB EDBD BUILDING**

DRAWING NO.  
**102**

REV  
**B**



SCHOOL INFRASTRUCTURE  
 www.schoolinfrastructure.nsw.gov.au



**LEGEND**

- 2 HUB PISO
- CIRCULATION
- OUTDOOR BREAKOUT
- OUTDOOR LEARNING
- SERVICES / AMENITIES

THIS IS A DRAFT ISSUE ONLY.



FOR IMPLEMENTATION/USE OF THE SINSW PATTERNBOOK, NOTE THE FOLLOWING:  
 INTELLECTUAL PROPERTY  
 Refer to: SI Patternbook - Introduction, Copyright and Disclaimer.  
 AGREEMENT OF USE  
 Refer to: SI Patternbook - Introduction, Copyright and Disclaimer.  
 SINSW CONTACT  
 Refer to: SI Patternbook - Introduction, Copyright and Disclaimer.

DRAWING NOTES

ARCHITECT

KEY PLAN

REV	BY	DATE	DESCRIPTION
A	Arc hite ctus	20/06/2025	PRELIMINARY REVIEW
B	Arc hite ctus	25/06/2025	PATTERNBOOK PRELIMINARY ISSUE

PROJECT NAME  
**SCHOOLS FOR SPECIFIC PURPOSES  
 MASTERPLAN STAGE 1  
 (PATTERNBOOK)**

PROJECT NO.

STATUS

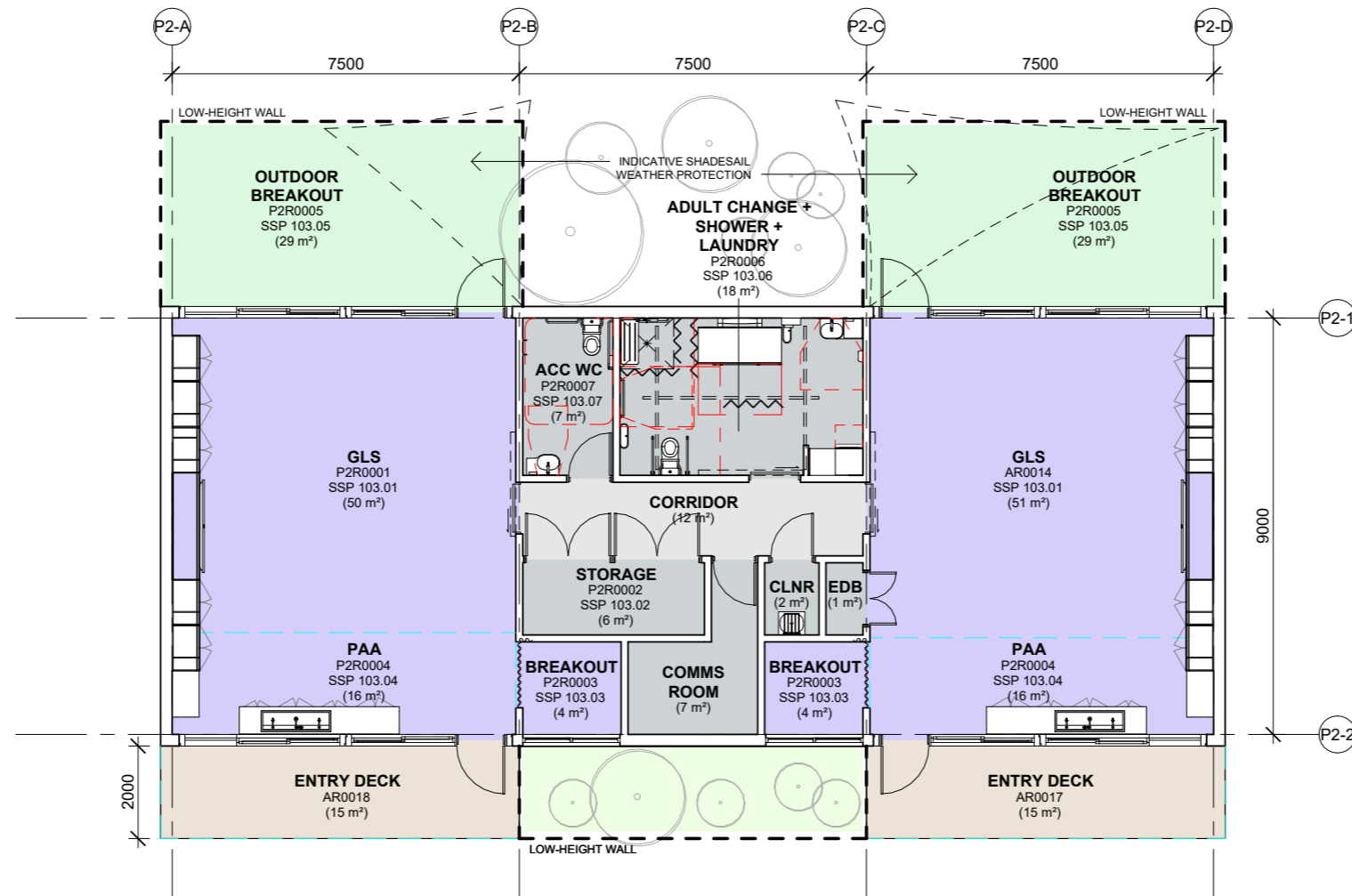
**FOR INFORMATION**

DRW	CHK	APP	DATE	SCALE
EL	RF	AD	25/06/2025	1 : 100 @A2

DRAWING TITLE  
**SSP 103 - 2 HUB P/IS/IO BUILDING  
 (OPTION 1)**

DRAWING NO.  
**103.1**

REV  
**B**



**LEGEND**

- 2 HUB PISO
- CIRCULATION
- OUTDOOR BREAKOUT
- OUTDOOR LEARNING
- SERVICES / AMENITIES

**THIS IS A DRAFT ISSUE ONLY.**



FOR IMPLEMENTATION/USE OF THE SINSW PATTERNBOOK, NOTE THE FOLLOWING:  
 INTELLECTUAL PROPERTY  
 Refer to: SI Patternbook - Introduction, Copyright and Disclaimer.  
 AGREEMENT OF USE  
 Refer to: SI Patternbook - Introduction, Copyright and Disclaimer.  
 SINSW CONTACT  
 Refer to: SI Patternbook - Introduction, Copyright and Disclaimer.

DRAWING NOTES

ARCHITECT

KEY PLAN

REV	BY	DATE	DESCRIPTION
A	Arc hite ctus	20/06/2025	PRELIMINARY REVIEW
B	Arc hite ctus	25/06/2025	PATTERNBOOK PRELIMINARY ISSUE

PROJECT NAME  
**SCHOOLS FOR SPECIFIC PURPOSES  
 MASTERPLAN STAGE 1  
 (PATTERNBOOK)**

PROJECT NO.

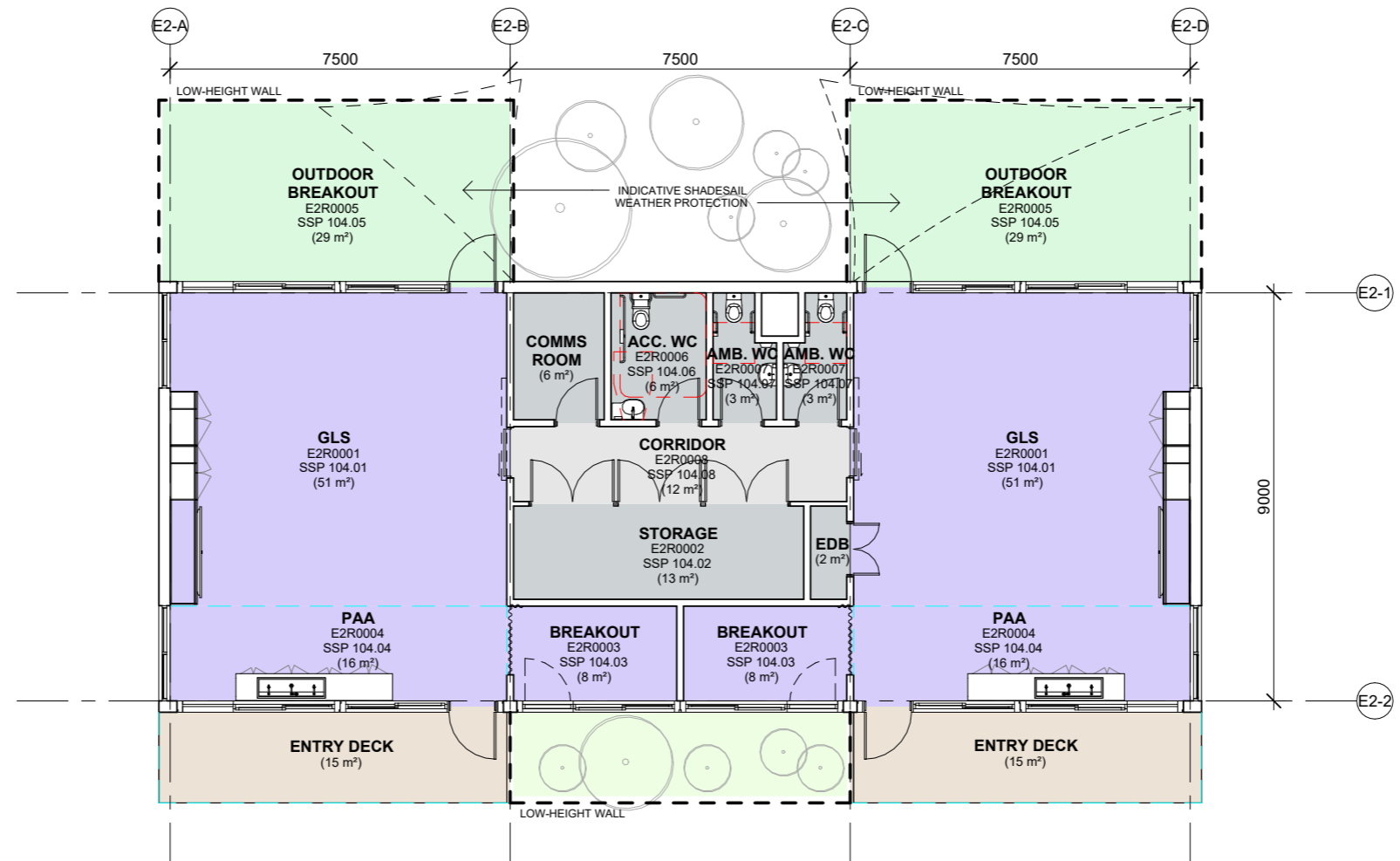
STATUS  
**FOR INFORMATION**

DRW	CHK	APP	DATE	SCALE
EL	RF	AD	25/06/2025	1 : 100 @A2

DRAWING TITLE  
**SSP 103 - 2 HUB P/IS/IO BUILDING  
 (OPTION 2)**

DRAWING NO.  
**103.2**

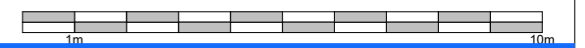
REV  
**B**



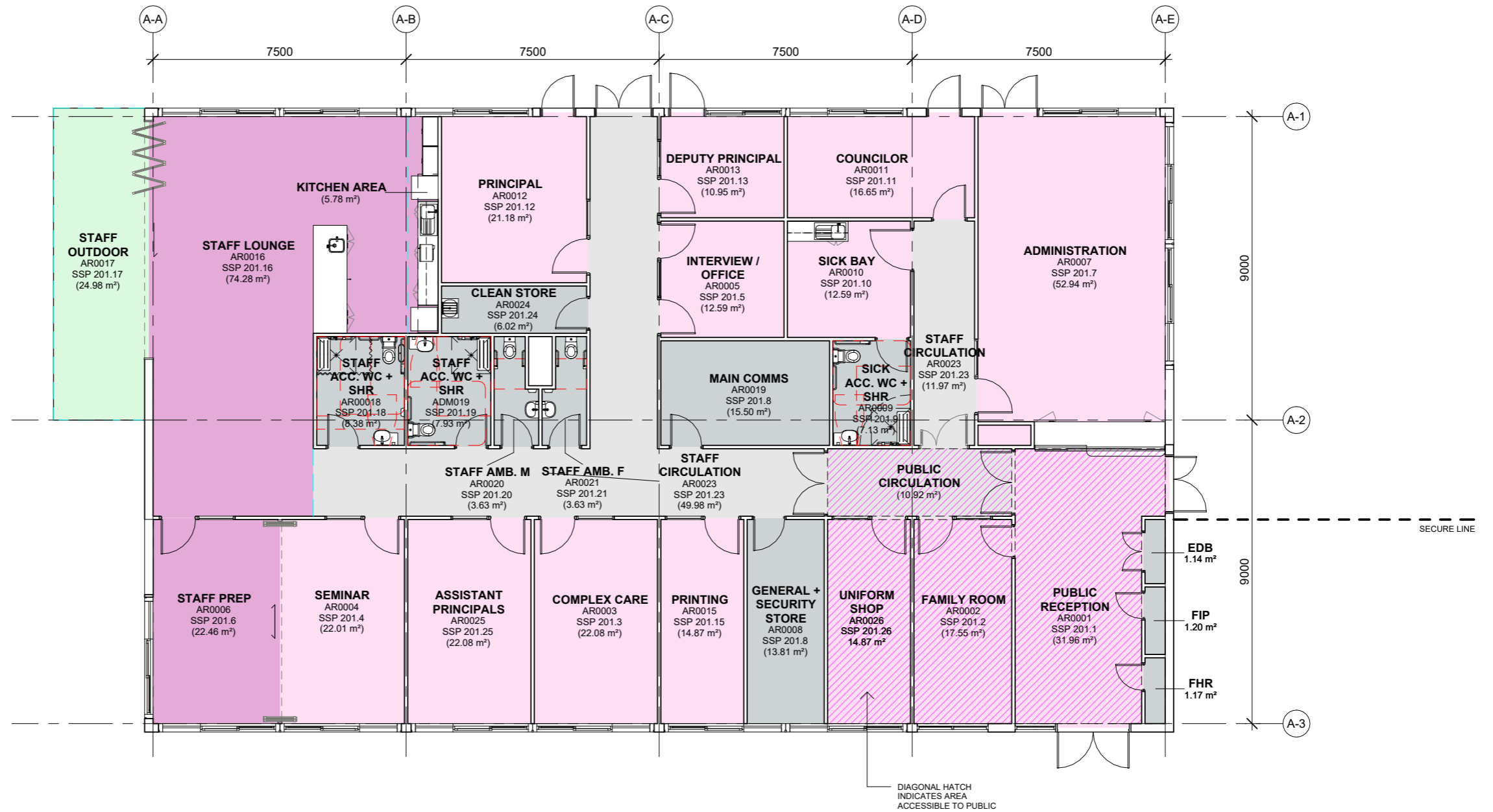
**LEGEND**

- 2 HUB EDBD
- CIRCULATION
- OUTDOOR BREAKOUT
- OUTDOOR LEARNING
- SERVICES / AMENITIES

**THIS IS A DRAFT ISSUE ONLY.**



REV	BY	DATE	DESCRIPTION
A	Arc hite ctus	20/06/2025	PRELIMINARY REVIEW
B	Arc hite ctus	25/06/2025	PATTERNBOOK PRELIMINARY ISSUE



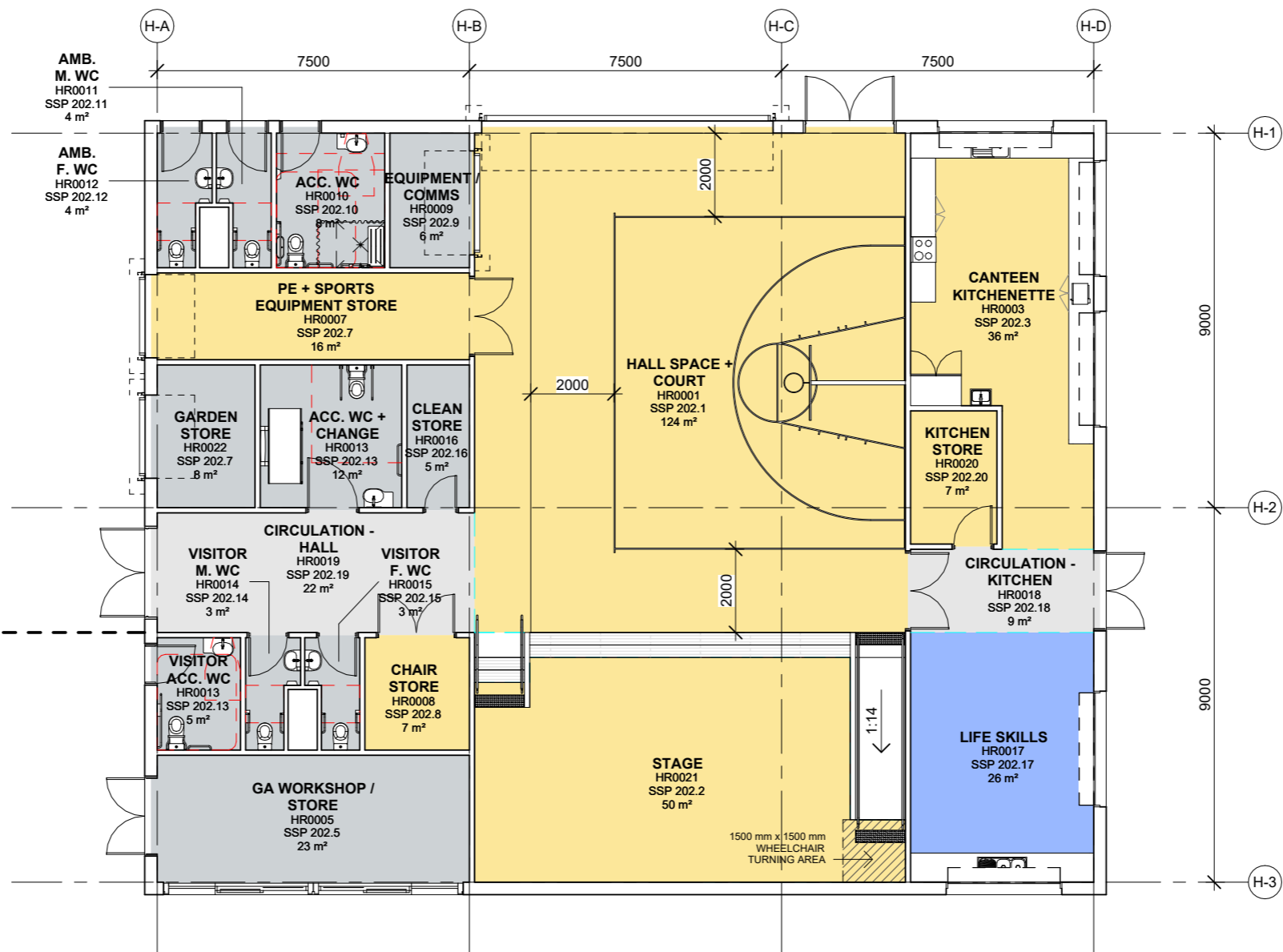
**LEGEND**

- ADMINISTRATION
- CIRCULATION
- OUTDOOR BREAKOUT
- SERVICES / AMENITIES
- STAFF HUB

**THIS IS A DRAFT ISSUE ONLY.**



REV	BY	DATE	DESCRIPTION
A	Arc	20/06/2025	PRELIMINARY ISSUE
	hite		
	ctus		
B	Arc	25/06/2025	PATTERNBOOK PRELIMINARY ISSUE
	hite		
	ctus		



- LEGEND
- CIRCULATION
  - CURRICULUM & REGULATION
  - HALL
  - SERVICES / AMENITIES

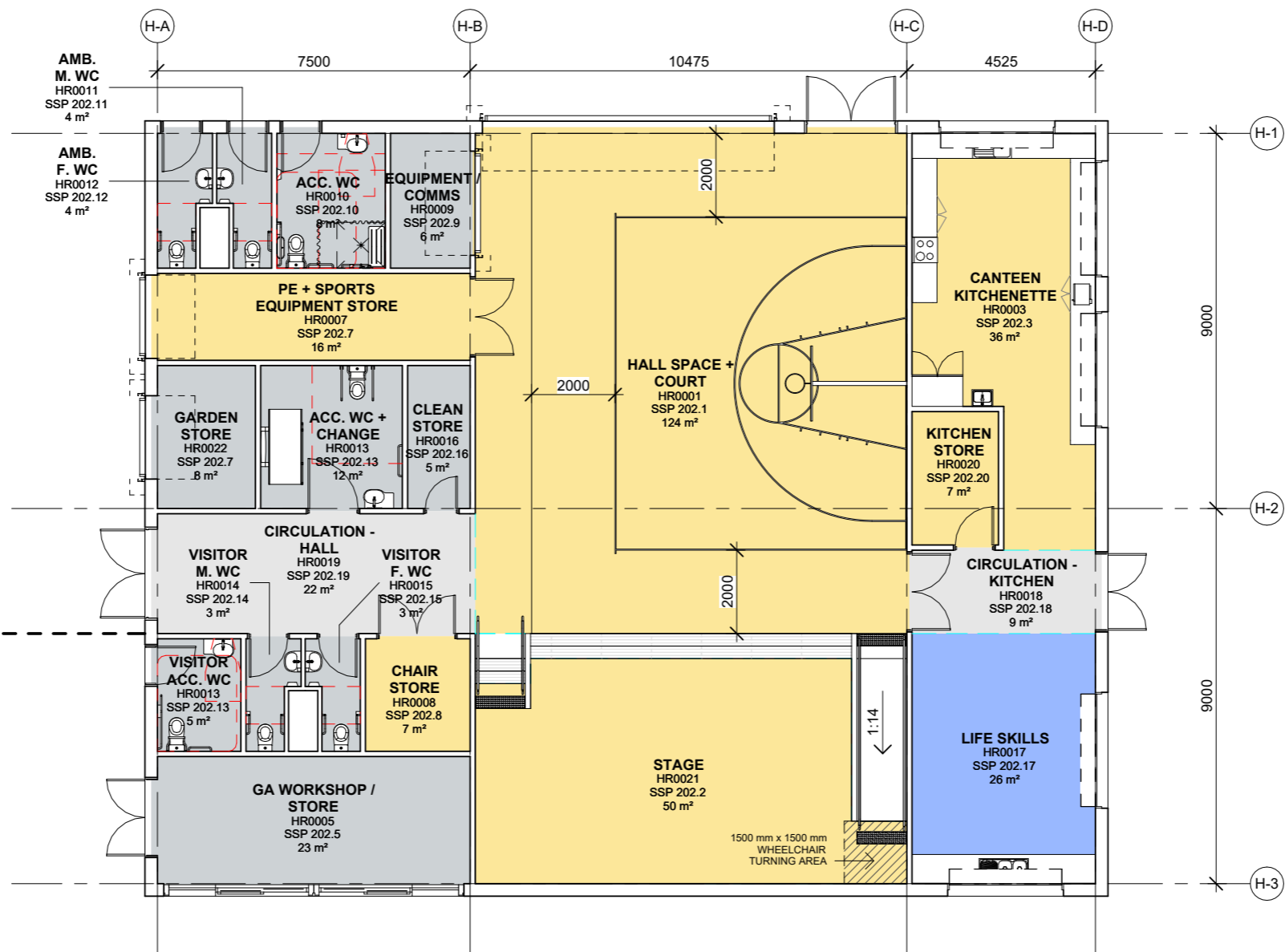
THIS IS A DRAFT ISSUE ONLY.



REV	BY	DATE	DESCRIPTION
A	Arc hite ctus	20/06/2025	PRELIMINARY REVIEW
B	Arc hite ctus	25/06/2025	PATTERNBOOK PRELIMINARY ISSUE

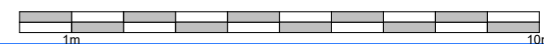
PROJECT NAME  
**SCHOOLS FOR SPECIFIC PURPOSES  
MASTERPLAN STAGE 1  
(PATTERNBOOK)**

DRAWING TITLE  
**SSP 202 - HALL HUB**



- LEGEND
- CIRCULATION
  - CURRICULUM & REGULATION
  - HALL
  - SERVICES / AMENITIES

THIS IS A DRAFT ISSUE ONLY.



REV	BY	DATE	DESCRIPTION
A	Arc hite ctus	20/06/2025	PRELIMINARY REVIEW
B	Arc hite ctus	25/06/2025	PATTERNBOOK PRELIMINARY ISSUE

PROJECT NAME  
**SCHOOLS FOR SPECIFIC PURPOSES  
MASTERPLAN STAGE 1  
(PATTERNBOOK)**

DRAWING TITLE  
**SSP 202 - HALL HUB**

PROJECT NO.

DRW EL | CHK RF | APP AD | DATE 25/06/2025

DRAWING NO.  
**202**

FOR INFORMATION

SCALE  
**1 : 100 @A2**

REV  
**B**