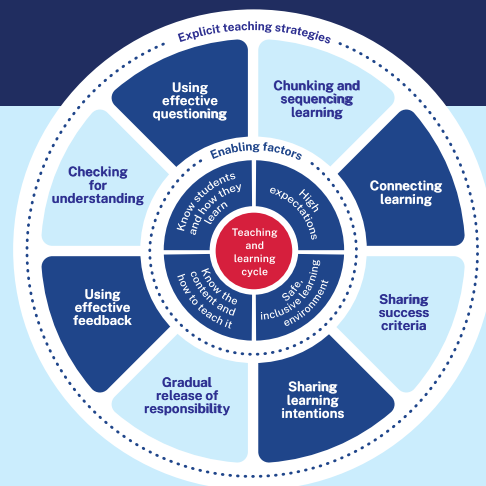


Explicit teaching – suite of resources

Advice for school leaders:

- See the *Explicit teaching in NSW Public Schools* statement.
- Start with the *Core knowledge workshops* to develop a shared understanding of the principles of explicit teaching.
- Lead the implementation of explicit teaching strategies using the *Strategy Learning module* and *Technique guides*. Evaluate as you go to develop stable and consistent practice.
- Deepen your whole-school explicit teaching practice by developing expertise in each strategy so that teachers select the right strategy at the right time for the right purpose.



Click on any box to access the named resource

Explicit teaching in NSW public schools statement

Leading explicit teaching

These professional learning resources are designed to support implementation of explicit teaching in NSW Public Schools.

Core knowledge workshops

Workshop 1 –
what is explicit teaching?

Workshop 2 –
how learning happens

Workshop 3 –
planning for learning

Strategy learning modules

Checking for understanding

Connecting learning

Chunking and sequencing

Gradual release of responsibility

Sharing learning intentions and Sharing success criteria
**combined into one module*

Using effective questioning

Using effective feedback

Technique guides

Student response systems

Activating prior knowledge

Unit planning

Modelling (I do, we do)

Planning syllabus aligned learning intentions and success criteria

Planning for effective questioning

Teacher feedback

Responsive teaching

Classroom discussion

Breaking down content and concepts

Scaffolding (we do, you do)

Sharing Learning intentions and success criteria

Using questions to build complexity

Peer and self feedback

Independent practice

Developmental rubrics

Snapshots of practice

Checking for understanding



In development

Resources to come

Snapshots of practice are a series of videos being developed to demonstrate explicit teaching strategies in action. School leaders and teachers can use these snapshots of explicit teaching in NSW public schools to reflect on their practice and create a shared understanding of how explicit teaching strategies optimise student learning.

