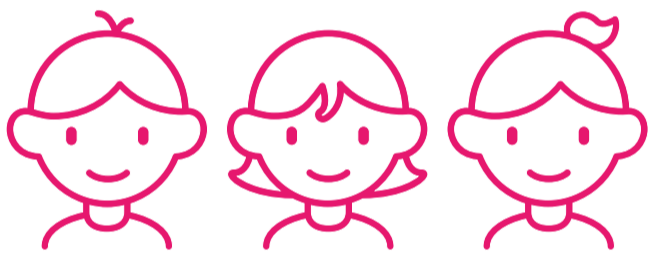


Every student is known, valued and cared for in our schools

# Sense of belonging: Create an accepting environment



New resource available now on the CESE website



**Sense of belonging** is a student's perception of being accepted, valued and included in their school setting by their peers and others in the school.

**A recent review of research suggests that teachers can support students' sense of belonging by:**

- managing the classroom effectively
- leading by example inside and outside of the classroom
- developing positive relationships
- being a strong advocate for students
- helping students to develop positive friendships
- addressing bullying.



The Centre for Education Statistics and Evaluation (CESE) was created by the NSW Department of Education in 2012 to improve the effectiveness, efficiency and accountability of education in NSW. CESE is focused on supporting decision-making in education delivery and development with strong evidence.



For more information on supporting sense of belonging, high expectations and advocacy at school, visit [www.cese.nsw.gov.au](http://www.cese.nsw.gov.au)

@nswcese