

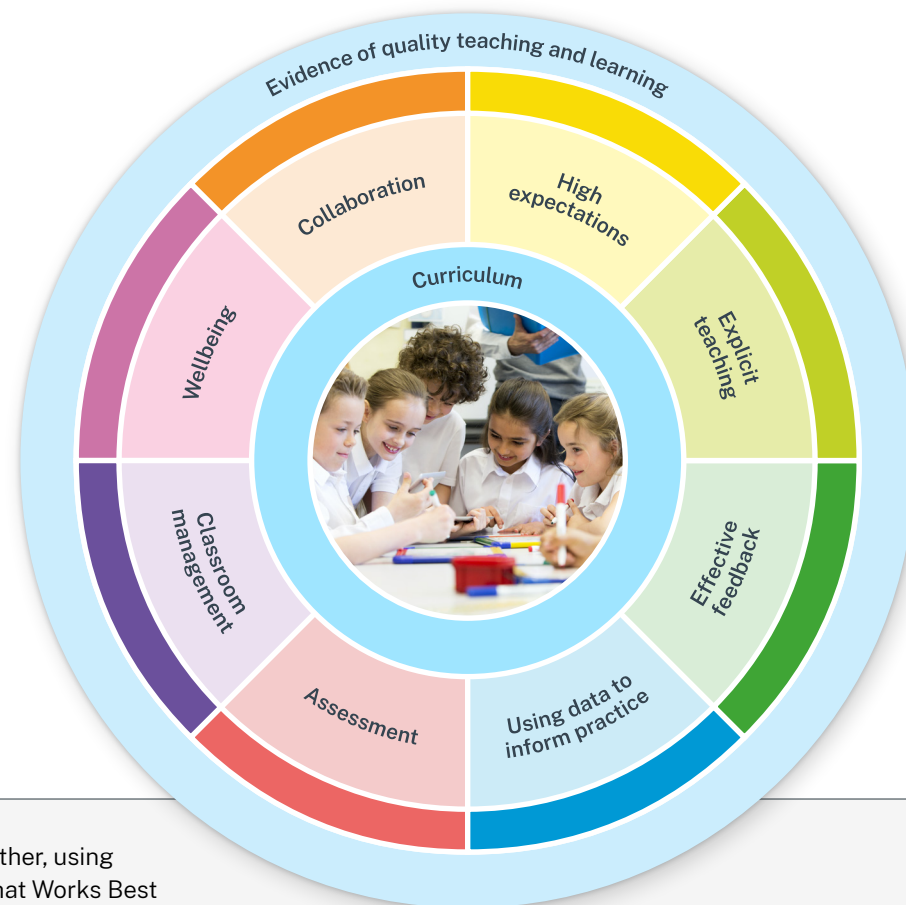
# What Works Best 2025

## Centre for Education Statistics and Evaluation

**What Works Best** is a suite of resources for teachers and school leaders that outlines 8 of the most effective practices to improve student learning outcomes.

- **High expectations:** teachers provide challenging and ambitious learning activities that help students meet their full potential through consistent effort and improvement.
- **Explicit teaching:** teachers clearly explain, model and demonstrate new concepts, while providing timely, targeted feedback. Students are given adequate time to ask questions, act on feedback, and apply their knowledge through practice.
- **Effective feedback:** teachers provide students with relevant, constructive and specific information about their performance on a task, against learning outcomes from the syllabus or clearly defined success criteria.
- **Using data to inform practice:** teachers and school leaders use data to monitor and analyse student learning and wellbeing, to inform decision-making to improve student and school outcomes.
- **Assessment:** teachers regularly monitor student progress using a mix of assessment approaches, to inform their next steps in teaching, determine the effectiveness of teaching strategies and provide evidence of student understanding.
- **Classroom management:** teachers create the conditions for learning by minimising disruptions, maximising instruction time and encouraging students to engage in learning.
- **Wellbeing:** teachers and school leaders facilitate student wellbeing through a sense of belonging, an ongoing commitment to cultural inclusivity, promoting positive relationships and supporting student resilience.
- **Collaboration:** teachers and school leaders work together to share evidence-informed practices, knowledge and problem-solving to achieve agreed learning goals.

The 8 What Works Best practices



These practices will have the most impact on educational outcomes when implemented together, using whole-school approaches. Excellence and equity go hand-in-hand, and the content of the What Works Best resources strongly supports Our Plan for NSW Public Education. To access the full What Works Best 2025 suite, scan the QR code or visit [education.nsw.gov.au/about-us/education-data-and-research/what-works-best](https://education.nsw.gov.au/about-us/education-data-and-research/what-works-best).