

Schools and students: 2022 statistical bulletin

Centre for Education Statistics and Evaluation



2022 statistical bulletin summary

NSW government

Full-time equivalent (FTE) enrolments

Primary enrolments	476,861
Secondary enrolments	307,958.7
SSP enrolments	6,029
Total enrolments	790,848.7

Aboriginal and Torres Strait Islander students

Total Aboriginal and Torres Strait Islander enrolments	70,865.6
Percent Aboriginal and Torres Strait Islander enrolments	9.0%

Part-time students

Number of part-time students	1,771
FTE enrolments	1,184.7

Preschool students

Number of preschool students	4,223
FTE enrolments	2,288.5

Students with language background other than English (LBOTE)

LBOTE enrolments	302,154
LBOTE enrolments as per cent of total enrolments	37.7%

Attendance rate Semester 1 (including support)

Primary (Years 1–6)	87.2%
Secondary (Years 7–10)	81.6%
Years 1–10	85.2%

Average primary class size

Kindergarten to Year 6	23.4
------------------------	------

HSC Year 12

HSC awards	35,492
------------	--------

NSW government schools

Primary and infants schools	1,601
Central/community schools	67
Secondary schools	402
Schools for specific purposes (SSPs)	117
Environmental education centres (EECs)	22
Total government schools	2,209

Preschools attached to primary/infants schools	100
Separate preschools	1
Total preschools	101

NSW non-government

Full-time equivalent (FTE) enrolments

Primary enrolments	218,952.3
Secondary enrolments	231,763.2
Total enrolments	450,715.5

NSW non-government schools

Primary schools	484
Secondary schools	140
Primary/secondary schools	278
Special schools	67
Total non-government schools	969

Data sources

The 2022 statistical bulletin reports NSW government schools data from:

- the census of students undertaken on Friday, 5 August 2022
- the census of students of language background other than English, undertaken on Friday 18 March 2022
- the K–6 class size audit undertaken on Friday, 18 March 2022

- the attendance collection undertaken in June/July 2022 for Semester 1
- Enrolment Registration Number (ERN) extract for the Family Occupation and Education Index (FOEI) at the beginning of Term 2 2022.

The bulletin also includes non-government schools data which were collected by the Australian Government Department of Education on Friday, 5 August 2022.

Further reference

Additional information about schools and students in NSW is available from the Centre for Education Statistics and Evaluation's (CESE) other statistical publications.

Visit our website to download the publications: education.nsw.gov.au/about-us/educational-data/cese/publications/statistics.

Additional information is also available from the NSW Education Data Hub: data.cese.nsw.gov.au.

Table of contents

List of tables

Schools

Table 1 NSW government schools by size, 2012–2022	5
Table 2 NSW government schools by type and SA4 groupings, mid-year 2022	7
Table 3 NSW government schools by FOEI bands and SA4 groupings, mid-year 2022	8
Table 4 NSW government schools by ABS remoteness and SA4 groupings, mid-year 2022	9
Table 5 List of college arrangements, mid-year 2022	10
Table 6 Secondary education schools by selective, specialist and coeducational status, mid-year 2022	11

Classes

Table 7 Average primary class sizes by year, 1997 and 2012–2022	12
---------------------------------------------------------------------------	----

Students

Table 8 Enrolments (FTE) in NSW government schools, 1970, 1980, 1990, 1996–2022	13
Table 9 Age-grade distribution of students in NSW government schools, mid-year 2022, primary students by age and year of schooling (including students in mainstream support classes)	15
Table 10 Age-grade distribution of students in NSW government schools, mid-year 2022, secondary students by age and year of schooling (including students in mainstream support classes)	16
Table 11 Age-grade distribution of students in NSW government schools, mid-year 2022, part-time secondary students by age and year of schooling	18
Table 12 Enrolments in support classes and schools for specific purposes (SSPs) by category, mid-year 2022	19
Table 13 Age-grade distribution of students in NSW government schools for specific purposes (SSPs), by age and category, mid-year 2022	21
Table 14 Age distribution of students in NSW government preschools and early intervention programs, mid-year 2022	22
Table 15 Enrolments (FTE) in distance education by year of schooling, mid-year 2022	23
Table 16 Enrolments (FTE) of Aboriginal students by SA4 groupings and grade group in NSW government schools, mid-year 2022	24

Table 17	Enrolment of students of language background other than English (LBOTE) in NSW government schools, March 2022 by SA4 groupings and grade groups	25
-----------------	-------------------------------------------------------------------------------------------------------------------------------------------------	----

Table 18	Enrolments (FTE) in NSW government schools by FOEI quarters and SA4 groupings, April 2022	26
-----------------	-------------------------------------------------------------------------------------------	----

Study patterns

Table 19	Board Developed Course enrolments in Year 10 subjects in NSW government schools, 2022	27
-----------------	---------------------------------------------------------------------------------------	----

Table 20	Course enrolments in Year 11 and Year 12 subjects in NSW government schools, 2022	33
-----------------	-----------------------------------------------------------------------------------	----

Progress measures

Table 21	Apparent retention (%) in NSW government schools, 2012–2022	40
-----------------	-------------------------------------------------------------	----

Table 22	NSW government school HSC completions, 2017–2022	42
-----------------	--------------------------------------------------	----

Table 23	Semester 1 attendance rates (%) in NSW government schools, Years 1–10 2022	43
-----------------	----------------------------------------------------------------------------	----

List of figures

Figure 1	NSW government schools, 2012–2022	6
-----------------	-----------------------------------	---

Figure 2	Primary and secondary enrolments (FTE) in NSW government schools, 2012–2022	14
-----------------	-----------------------------------------------------------------------------	----

Figure 3	Enrolments (FTE) in NSW government schools by year of schooling and gender, mid-year 2022	17
-----------------	-------------------------------------------------------------------------------------------	----

Figure 4	Enrolments (FTE) in NSW government schools by age and gender, mid-year 2022	17
-----------------	-----------------------------------------------------------------------------	----

Figure 5	Enrolments in support classes in mainstream schools and SSPs by category, mid-year 2022	20
-----------------	-----------------------------------------------------------------------------------------	----

Figure 6	Apparent retention (%) in NSW government schools, 2012–2022	41
-----------------	-------------------------------------------------------------	----

Figure 7	Semester 1 attendance rates (%) in NSW government schools, Years 1–10 2022	44
-----------------	----------------------------------------------------------------------------	----

Schools

Table 1

NSW government schools by size, 2012–2022

Classification	2012	2013	2014	2015	2016	2017	2018	2019	2020	2021	2022
Primary and infants schools											
More than 700 enrolments	70	85	95	97	106	118	120	116	117	115	106
451 to 700 enrolments	260	263	260	263	269	267	273	281	286	273	271
301 to 450 enrolments	292	285	298	307	308	309	304	317	312	315	309
160 to 300 enrolments	380	378	361	350	335	334	336	324	322	332	352
26 to 159 enrolments	453	424	412	411	407	397	388	377	370	371	367
Less than 26 enrolments	167	182	191	178	183	182	183	190	200	199	196
Total	1,622	1,617	1,617	1,606	1,608	1,606	1,604	1,605	1,607	1,605	1,601
Central and community schools											
More than 900 enrolments	3	3	3	3	3	2	2	2	3	3	3
701 to 900 enrolments	1	1	1	2	2	3	3	3	2	2	2
451 to 700 enrolments	4	5	4	3	3	2	3	3	3	4	3
301 to 450 enrolments	7	6	8	7	8	8	7	9	8	5	6
160 to 300 enrolments	20	20	20	20	17	18	20	17	20	20	20
Less than 160 enrolments	32	32	31	31	33	32	31	34	32	34	33
Total	67	67	67	66	66	66	66	68	68	68	67
Secondary schools											
More than 900 enrolments	130	123	127	127	124	125	126	129	136	134	127
900 or less enrolments	267	274	270	272	275	274	273	268	263	265	272
Other	1	1	1	2	2	2	2	2	2	2	3
Total	398	398	398	401	401	401	401	399	401	401	402
Other schools											
Schools for specific purposes	113	113	114	113	112	113	113	115	116	117	117
Environmental education centres	23	23	23	23	23	23	23	23	23	23	22
Total schools	2,223	2,218	2,219	2,209	2,210	2,209	2,207	2,210	2,215	2,214	2,209

Notes:

- This table shows schools by size (number of students) rather than 'classification' as in previous publications, as school classification is no longer applicable.
- NSW School of Languages, Aurora College and Centre of Excellence in Agricultural Education are included in 'Other' category under Secondary schools. These schools do not have census enrolments.
- Refer to explanatory notes 1, 2 and 3.

Figure 1
NSW government schools, 2012–2022

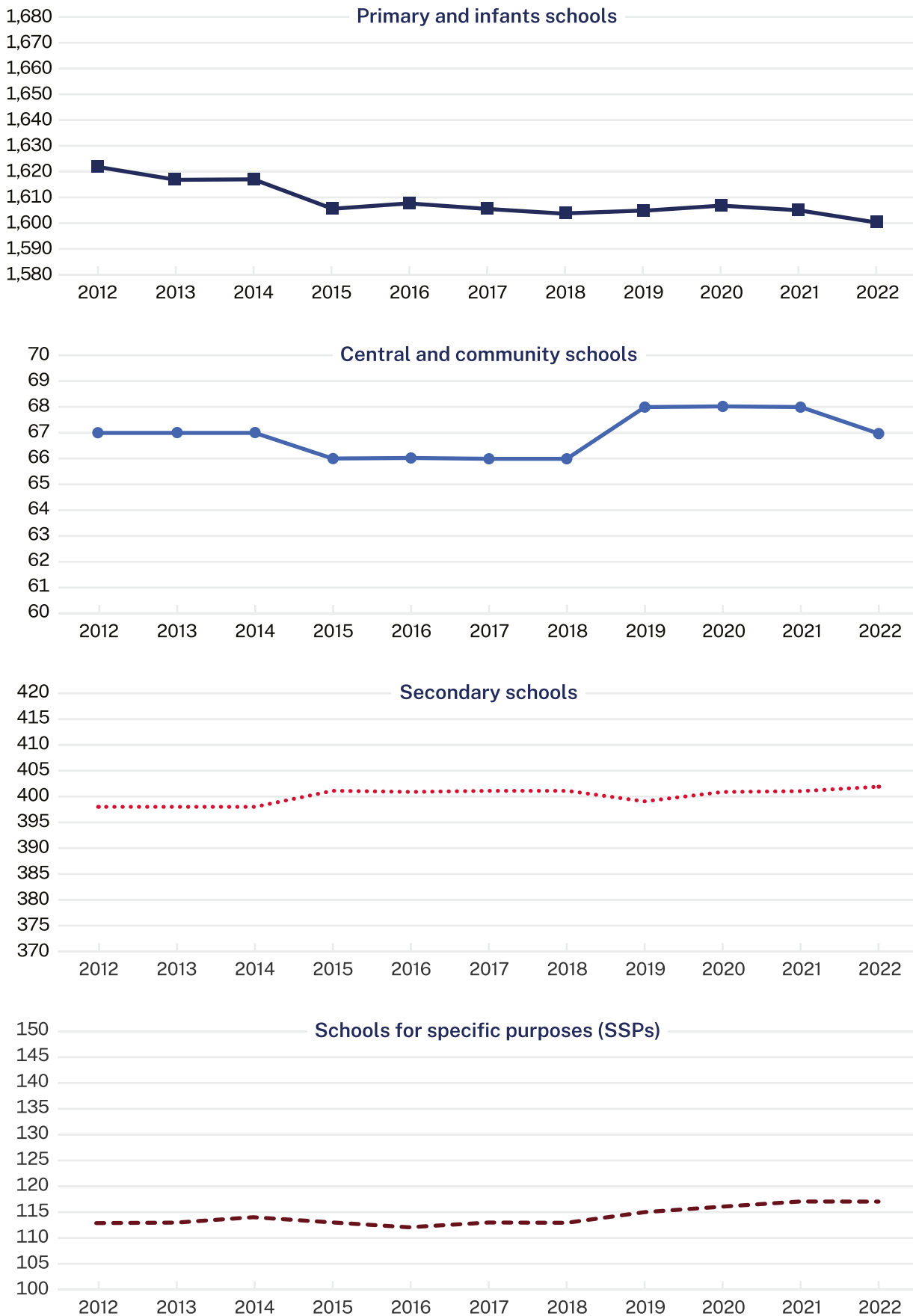


Table 2**NSW government schools by type and SA4 groupings, mid-year 2022**

SA4 groupings	Primary/ infants	Central/ community	Secondary	SSPs*	EECs†	Total
Sydney-North	100	1	34	12	2	149
Sydney-Inner	90	1	29	10	1	131
Sydney-South	117	1	38	15	2	173
Sydney-South West	117		39	13	3	172
Sydney-West	117		36	17		170
Sydney-North West	111		29	5	3	148
Sydney total	652	3	205	72	11	943
North East NSW	210	8	39	4	2	263
North West NSW	214	28	43	8	3	296
South West NSW	200	22	40	11	2	275
South East NSW	182	4	39	9	2	236
Central Coast, Newcastle	143	2	36	13	2	196
Regional total	949	64	197	45	11	1,266
NSW	1,601	67	402	117	22	2,209

Notes:

- Alexandria Park Community School, Batlow Technology School, Dubbo School of Distance Education, Evans River Community School, Hunter School of Performing Arts, Lucas Heights Community School and Wadalba Community School are included with central/community schools.
- Refer to explanatory notes 1, 2, 3 and 17.

* Schools for specific purposes (SSPs)

† Environmental education centres (EECs)

Table 3**NSW government schools by FOEI bands and SA4 groupings, mid-year 2022**

SA4 groupings	Less than 50	50 to 90	90 to 110	110 to 150	150 or more	N/A	Total	≥110 (%)
Sydney-North	124	17	2		2	4	149	1.3%
Sydney-Inner	94	22	8	5		2	131	3.8%
Sydney-South	40	64	26	29	12	2	173	23.7%
Sydney-South West	5	19	34	62	49	3	172	64.5%
Sydney-West	41	34	23	37	34	1	170	41.8%
Sydney-North West	30	44	19	44	7	4	148	34.5%
Sydney total	334	200	112	177	104	16	943	29.8%
North East NSW	7	57	51	108	38	2	263	55.5%
North West NSW		36	36	132	89	3	296	74.7%
South West NSW	3	30	52	141	47	2	275	68.4%
South East NSW	23	58	51	78	24	2	236	43.2%
Central Coast, Newcastle	24	55	24	78	13	2	196	46.4%
Regional total	57	236	214	537	211	11	1,266	59.1%
NSW	391	436	326	714	315	27	2,209	46.6%

Notes:

The list of schools with FOEI values and quarters:

- Includes:
 - All hospital schools (all assigned a notional FOEI of 100)
 - Stewart House School (assigned a notional FOEI of 150)
 - Royal Far West School (assigned a notional FOEI of 150)
- Excludes:
 - Palm Avenue School
 - NSW School of Languages
 - All Environmental Education Centres
 - Aurora College
- Refer to explanatory notes 15 and 17.
- As of 2022, Norfolk Island (previously included in North West NSW SA4 Grouping) is no longer under the jurisdiction of NSW, and therefore not included in the figures.

Table 4**NSW government schools by ABS remoteness and SA4 groupings, mid-year 2022**

SA4 groupings	Major cities	Inner regional	Outer regional	Remote	Very remote	Total
Sydney-North	147	2				149
Sydney-Inner	131					131
Sydney-South	170	3				173
Sydney-South West	159	13				172
Sydney-West	170					170
Sydney-North West	123	24	1			148
Sydney total	900	42	1	0	0	943
North East NSW	21	191	50		1	263
North West NSW	32	94	130	29	11	296
South West NSW		141	124	10		275
South East NSW	91	108	37			236
Central Coast, Newcastle	190	6				196
Regional total	334	540	341	39	12	1,266
NSW	1,234	582	342	39	12	2,209

Notes:

- From 2016 onwards, instead of the Ministerial Council for Education, Early Childhood Development and Youth Affairs (MCEEDYA) remoteness categories, remoteness geographical data will be reported by the Australian Bureau of Statistics (ABS) remoteness structure. This is in line with national reporting.
- Refer to explanatory notes 2 and 17.

Table 5
List of college arrangements, mid-year 2022

College	Senior campus	Other campuses
Brisbane Water Secondary College	Woy Woy Campus	Umina Campus
Callaghan College	Jesmond Senior Campus	Wallsend Campus Waratah Campus
Chifley College	Senior Campus	Bidwill Campus Dunheved Campus Mount Druitt Campus Shalvey Campus
Denison College of Secondary Education		Bathurst High Campus Kelso High Campus
Dubbo College	Senior Campus	Delroy Campus South Campus
Georges River College	Oatley Senior Campus	Hurstville Boys Campus Peakhurst Campus Penshurst Girls Campus
Great Lakes College	Senior Campus	Forster Campus Tuncurry Campus
Hastings Secondary College		Port Macquarie Campus Westport Campus
Moree Secondary College	Albert St Campus	Carol Ave Campus
Nirimba College	Wyndham College	Quakers Hill High School Riverstone High School Seven Hills High School
Northern Beaches Secondary College	Freshwater Senior Campus	Balgowlah Boys Campus Cromer Campus Mackellar Girls Campus Manly Campus
Sydney Secondary College	Blackwattle Bay Campus	Balmain Campus Leichhardt Campus
The Rivers Secondary College		Kadina High Campus Lismore High Campus Richmond River High Campus
Tuggerah Lakes Secondary College	The Entrance Campus	Berkeley Vale Campus Tumbi Umbi Campus

Notes:

- Denison College of Secondary Education, Hastings Secondary College and The Rivers Secondary College do not have senior campuses.
- Refer to explanatory note 14.

Table 6

Secondary education schools by selective, specialist and coeducational status, mid-year 2022

Selective status	Specialty name	Coeducational	Boys	Girls	Total
Fully selective	Agricultural	3	1		4
	Comprehensive	9	4	4	17
Partially selective	Comprehensive	16	2	2	20
	Junior college	2			2
	Language	2			2
	Senior college	1			1
	Other	1			1
Total selective		34	7	6	47
Non-selective	Agricultural	1			1
	Comprehensive	328	11	15	354
	Creative arts	1			1
	Distance education	2			2
	Intensive English	1			1
	Junior college	14	1	1	16
	Language	3		1	4
	Marine technology	1			1
	Performing arts	8			8
	Rural technology	1			1
	Senior college	15			15
	Sports	7			7
	Technology	7	2	1	10
	Visual arts	1			1
Total non-selective		390	14	18	422
Total secondary schools		424	21	24	469

Notes:

- Selective high schools provide a learning environment designed for academically gifted and high potential students.
- Includes secondary schools and central/community schools. The Conservatorium High School is included with performing arts schools.
- Intensive English only covers standalone Intensive English schools and does not include schools with an attached Intensive English Centre.
- Refer to explanatory note 1.

Classes

Table 7

Average primary class sizes by year, 1997 and 2012–2022

Year	1997	2012	2013	2014	2015	2016	2017	2018	2019	2020	2021	2022
Kindergarten	24.1	19.3	19.4	19.3	19.2	19.1	19.1	19.1	18.8	18.8	18.6	18.4
Year 1	25.5	21.2	21.3	21.4	21.3	21.3	21.3	21.4	21.1	21.0	20.9	20.7
Year 2	26.2	22.7	22.7	22.7	22.7	22.6	22.5	22.5	22.3	22.2	22.0	21.8
Year 3	26.6	25.5	25.6	25.6	25.9	25.9	25.7	25.8	25.7	25.4	25.1	24.9
Year 4	26.8	25.9	25.9	25.9	26.2	26.2	26.1	26.1	25.9	25.6	25.4	25.2
Year 5	26.8	26.2	26.3	26.2	26.5	26.3	26.4	26.4	26.1	25.9	25.6	25.5
Year 6	26.9	26.2	26.1	26.2	26.4	26.3	26.4	26.4	26.1	25.9	25.7	25.5
Kindergarten – Year 6	26.9	24.0	24.0	24.0	24.1	24.1	24.1	24.1	23.9	23.8	23.6	23.4

Notes:

- The average class size for each year level is calculated from regular and multi-age classes that contain a student from that year level. This can result in a lower K–6 average class size than any individual year level.
- Students attending schools for specific purposes (SSPs), students in mainstream support classes and distance education students are excluded from average class size calculations.
- From 2017, school size is based on primary enrolment rather than school classification.
- Refer to explanatory note 12.

Students

Table 8

Enrolments (FTE) in NSW government schools, 1970, 1980, 1990, 1996–2022

Year	Primary (K–6)	Secondary (7–12)	SSP	Total
1970	503,547	257,874		761,421
1980	515,769	283,352		799,121
1990	434,814	304,006	4,366	743,186
1996	450,465	306,823.3	3,749	761,037.3
1997	451,560	308,922.7	3,690	764,172.7
1998	452,568	309,133.7	3,673	765,374.7
1999	453,454	308,116.1	3,762	765,332.1
2000	454,363	303,681	3,792	761,836
2001	451,093	301,774.4	3,873	756,740.4
2002	447,897	302,988	3,915	754,800
2003	443,213	304,034	3,938	751,185
2004	438,677	302,849.6	3,981	745,507.6
2005	434,876	302,578.3	4,124	741,578.3
2006	432,660	303,622	4,133	740,415
2007	429,900	304,457.7	4,278	738,635.7
2008	428,331	303,055.7	4,392	735,778.7
2009	429,000	303,180.7	4,466	736,646.7
2010	430,177	307,291.2	4,673	742,141.2
2011	433,873	306,893.2	4,774	745,540.2
2012	438,681	304,632.1	4,921	748,234.1
2013	446,848	303,433.6	5,064	755,345.6
2014	456,151	302,339.7	5,207	763,697.7
2015	465,767	300,871.1	5,340	771,978.1
2016	475,073	300,069.9	5,457	780,599.9
2017	484,645	300,832.8	5,562	791,039.8
2018	491,043	301,315.2	5,664	798,022.2
2019	493,608	306,327.8	5,737	805,672.8
2020	492,280	312,016.8	5,780	810,076.8
2021	485,889	310,421.4	5,872	802,182.4
2022	476,861	307,958.7	6,029	790,848.7

Notes:

- Since 1993 some students have enrolled part-time. All enrolments are reported in full-time equivalent (FTE) units and include full-time and part-time students.
- Refer to explanatory notes 1, 2, 3, 7 and 8.

Figure 2

Primary and secondary enrolments (FTE) in NSW government schools, 2012–2022

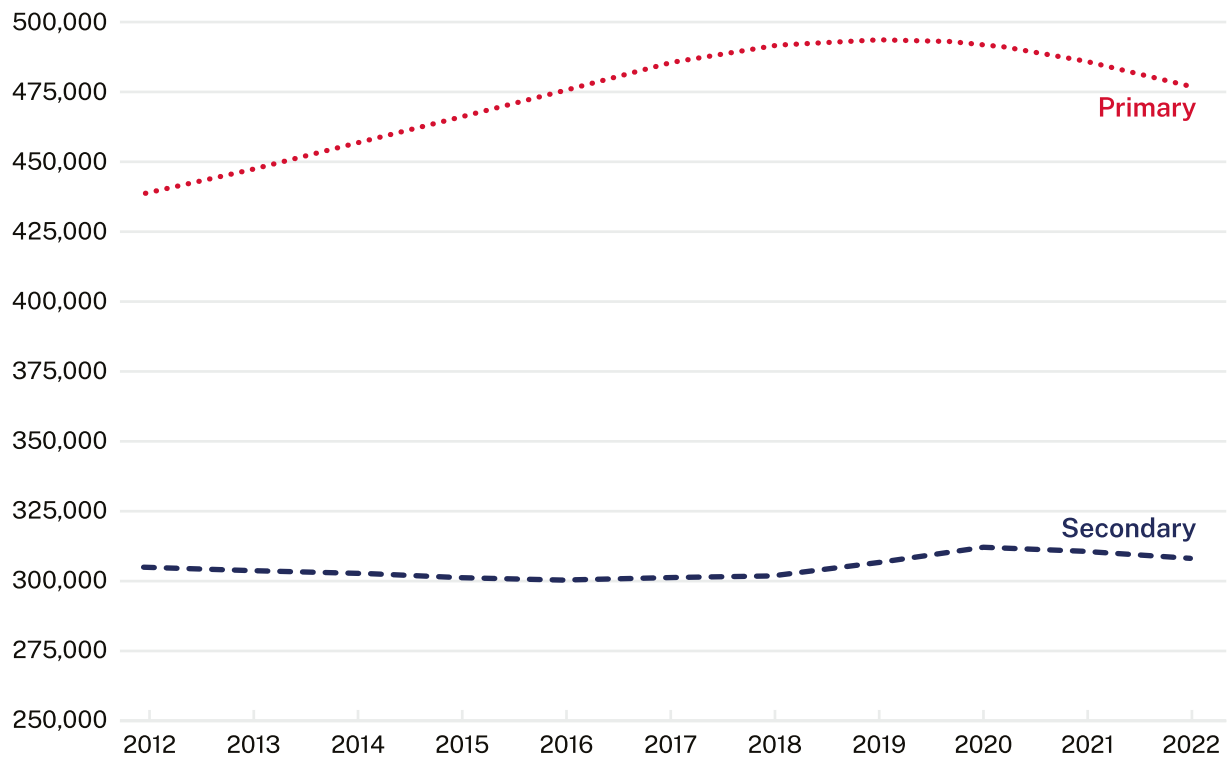


Table 9

Age-grade distribution of students in NSW government schools, mid-year 2022, primary students by age and year of schooling (including students in mainstream support classes)

Age Yrs:mths	Kindergarten		Year 1		Year 2		Year 3		Year 4		Year 5		Year 6		Total		Primary total
	Boys	Girls	Boys	Girls	Boys	Girls	Boys	Girls	Boys	Girls	Boys	Girls	Boys	Girls	Boys	Girls	
Under 5	417	605													417	605	1,022
5-5:11	23,228	23,864	372	557											23,600	24,421	48,021
6-6:11	11,053	7,966	23,708	24,364	403	524									35,164	32,854	68,018
7-7:11	28*	16*	10,743	7,610	24,322	24,615	430	548							35,521	32,787	68,308
8-8:11			28*	19	10,764	7,548	24,569	25,009	407	554					35,769	33,131	68,900
9-9:11					38	14	10,556	7,352	25,356	25,803	486*	679*			36,435	33,849	70,284
10-10:11							35	20*	10,653	7,298	24,728	25,251	448	587	35,865	33,155	69,020
11-11:11									32*	22*	9,857	6,853	24,447	25,324	34,336	32,198	66,534
12-12:11											40	26	9,802	6,812	9,843	6,840	16,683
13 and over													35	36	35	36	71
Subtotal	34,726	32,451	34,851	32,550	35,527	32,701	35,590	32,929	36,448	33,677	35,111	32,809	34,732	32,759	246,985	229,876	
Total	67,177		67,401		68,228		68,519		70,125		67,920		67,491		476,861		476,861

Notes:

- Students in distance education and Opportunity Classes (OC) are included with their appropriate grade levels.
- From 2020, students in mainstream support classes are included in their underlying grade of enrolment. Students in schools for specific purposes (SSPs) are not included.
- In most scholastic years there are a small number of students in atypical age groups. These have been included in the nearest band. This is indicated with an asterisk. For instance, of the 20 Year 3 Girls in the 10-10:11 age bracket, up to 5 students are included from older age brackets. As a result, the sum of each row may not equal the totals reported.

Table 10

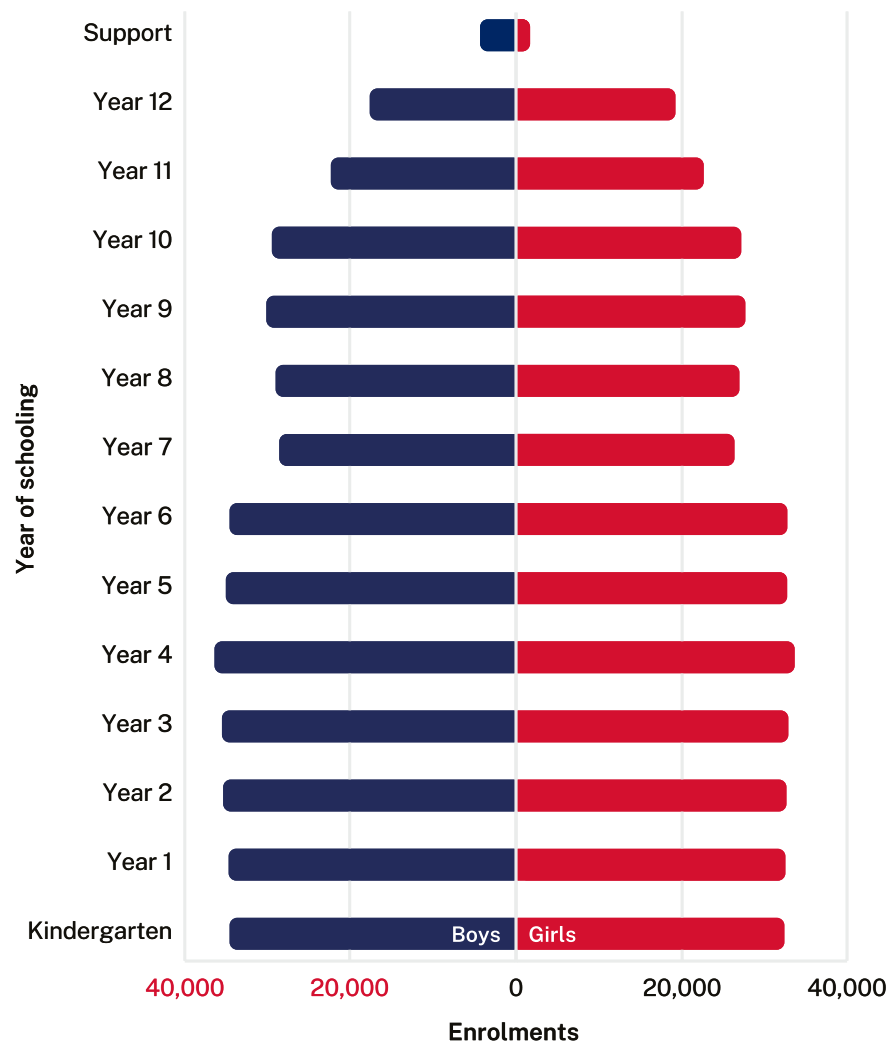
Age-grade distribution of students in NSW government schools, mid-year 2022, secondary students by age and year of schooling (including students in mainstream support classes)

Age Yrs:mths	Year 7		Year 8		Year 9		Year 10		Year 11		Year 12		Total		Secondary total
	Boys	Girls	Boys	Girls	Boys	Girls	Boys	Girls	Boys	Girls	Boys	Girls	Boys	Girls	
Under 12	387	608											387	610	997
12-12:11	20,581	20,621	405	561*									20,987	21,180	42,167
13-13:11	7,676	5,180	21,096	21,100	415*	588							29,187	26,868	56,055
14-14:11	46*	40*	7,603	5,305	21,594	21,452	431*	610					29,674	27,405	57,079
15-15:11			59*	43*	8,076	5,468	20,984	20,759	345*	527*			29,460	26,798	56,258
16-16:11					140*	163*	7,896	5,524	16,505	17,706	354	465*	24,836	23,766	48,602
17-17:11							173	151	5,445	4,358	12,928	15,015	18,555	19,529	38,084
18-18:11							16	25	159	136	4,388	3,725	4,578	3,903	8,481
19-19:11							12	11	16	23	127	143	166	195	361
20-20:11							14	13	6	13	22	38	47	72	119
21 and over							39	96	16	28	40	56	117	225	342
Subtotal	28,690	26,449	29,163	27,009	30,225	27,671	29,565	27,189	22,492	22,791	17,859	19,442	157,994	150,551	
Total	55,139		56,172		57,896		56,754		45,283		37,301		308,545		308,545

Notes:

- Students in distance education and Opportunity Classes (OC) are included with their appropriate grade levels.
- From 2020, students in mainstream support classes are included in their underlying grade of enrolment. Students in schools for specific purposes (SSPs) are not included.
- In most scholastic years there are a small number of students in atypical age groups. These have been included in the nearest band. This is indicated with an asterisk. For instance, of the 46 Year 7 Boys in the 14-14:11 age bracket, up to 5 students are included from older age brackets. As a result, the sum of each row may not equal the totals reported.

Figure 3
Enrolments (FTE) in NSW government schools by year of schooling and gender, mid-year 2022



Note:

- From 2020, 'Support' includes only students in schools for specific purposes (SSPs). Students in mainstream support classes are included in their underlying grade of enrolment.

Figure 4
Enrolments (FTE) in NSW government schools by age and gender, mid-year 2022

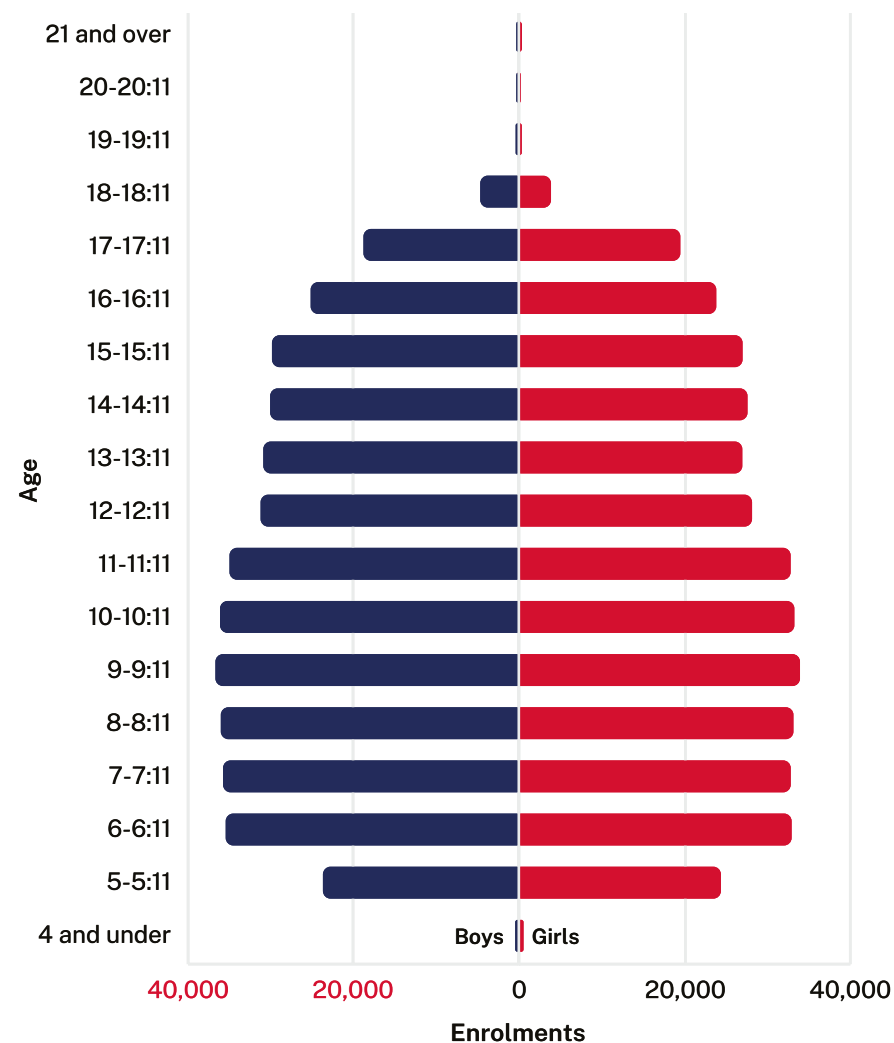


Table 11

Age-grade distribution of students in NSW government schools, mid-year 2022, part-time secondary students by age and year of schooling

Age Years:months	Year 11		Year 12		Total		Total part-time
	Boys	Girls	Boys	Girls	Boys	Girls	
Under 16							10
16-16:11	157*	203*	9	16	166*	219*	375
17-17:11	52	50	341	470	393	520	913
18-18:11	9*	21*	176	197	183	210	393
19-19:11			26*	44*	28*	52*	60
20 and over							20
Subtotal	218	274	552	727	770	1,001	
Total	492		1,279		1,771		1,771

Full-time equivalent

Subtotal	114.6	159.3	392.3	518.5	506.9	677.8	1184.7
Total	273.9		910.8		1,184.7		

Notes:

- In most scholastic years there are a small number of students in atypical age groups. These have been included in the nearest band. This is indicated with an asterisk. For instance, of the 157 Year 11 Boys in the 16-16:11 age bracket, up to 5 students are included from younger age brackets. As a result, the sum of each row may not equal the totals reported.
- Refer to explanatory notes 7 and 8.

Table 12

Enrolments in support classes and schools for specific purposes (SSPs) by category, mid-year 2022

Category	Primary	Secondary	Schools for specific purposes (SSP)	Total
AU	2,011	1,881	109	4,001
BD	21	57	389	467
DB			≤5*	≤5*
ED	399	845	1,042	2,286
H	123	129		252
IE	63	1,833		1,896
IM	1,347	3,277		4,624
IO	490	580		1,070
IO/AU	1,021	285	218	1,524
IO/IS	434	438	3,147	4,019
IS	21-30*	≤5*	97	123
JJ			166	166
MC	4,159	3,208	800	8,167
P	35	41-50*	6-10*	89
TUT	≤5*	110	31-40*	144
V			11-20*	11-20*
Total	10,130	12,688	6,029	28,847

Key:

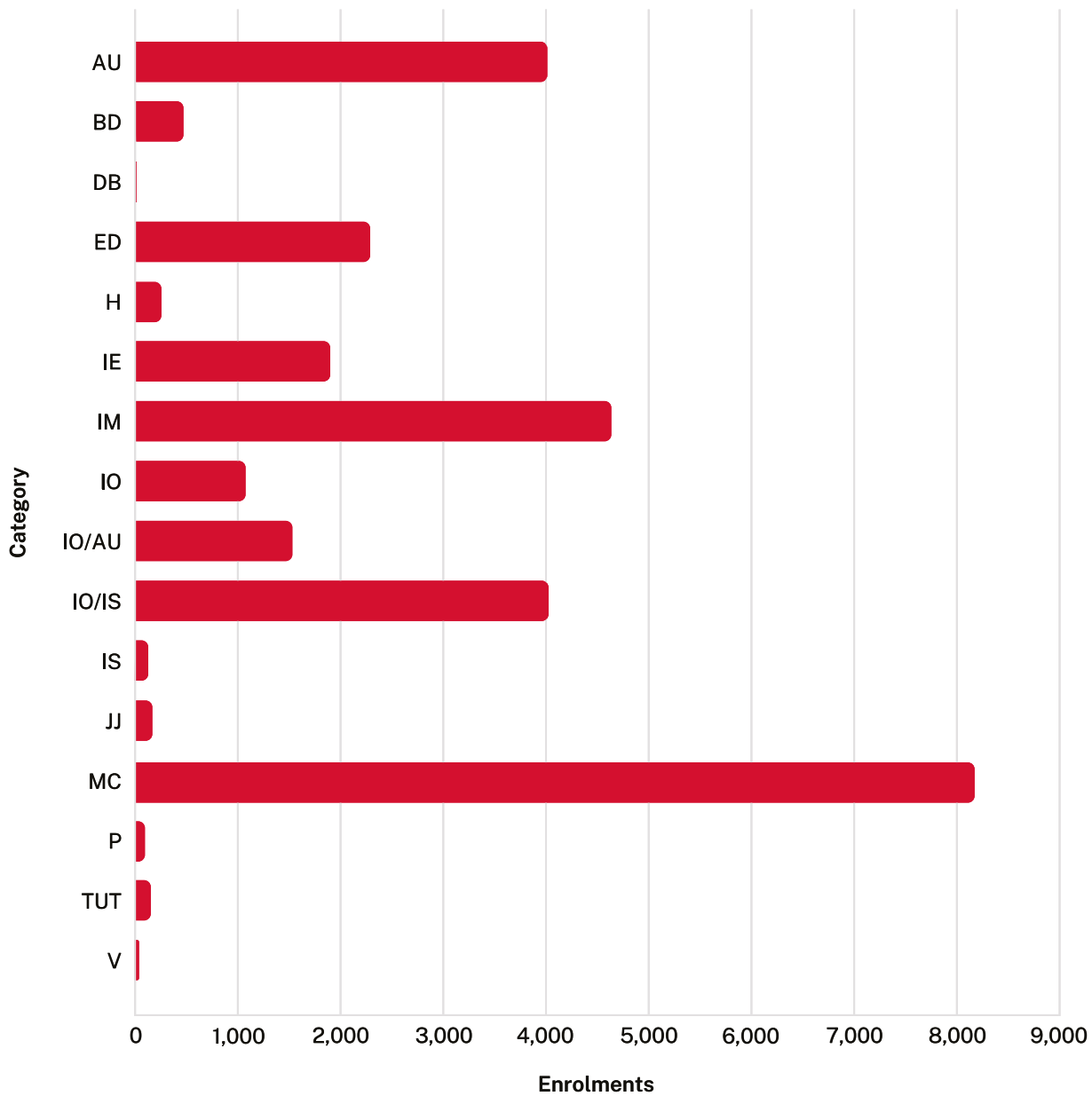
AU	Autism	IO/AU	Both autism and moderate intellectual disability
BD	Behaviour disorder	IO/IS	Moderate or severe intellectual disability
DB	Visual and hearing disability	IS	Severe intellectual disability
ED	Emotional disturbance	JJ	Juvenile Justice
H	Hearing disability	MC	Multicategorical
IE	Intensive English	P	Physical disability
IM	Mild intellectual disability	TUT	Tutorial
IO	Moderate intellectual disability	V	Visual disability

Notes:

- Students in SSPs, except those in juvenile justice schools, are reported by the type of support class they are enrolled in, not by the type of SSP.
- From 2020, students in mainstream support classes are reported by their underlying grade of enrolment.
- Data has been confidentialised where necessary to suppress enrolments of 5 or fewer students.
- Refer to explanatory notes 3 and 5.

Figure 5

Enrolments in support classes in mainstream schools and SSPs by category, mid-year 2022



Key:

AU	Autism	IO/AU	Both autism and moderate intellectual disability
BD	Behaviour disorder	IO/IS	Moderate or severe intellectual disability
DB	Visual and hearing disability	IS	Severe intellectual disability
ED	Emotional disturbance	JJ	Juvenile Justice
H	Hearing disability	MC	Multicategorical
IE	Intensive English	P	Physical disability
IM	Mild intellectual disability	TUT	Tutorial
IO	Moderate intellectual disability	V	Visual disability

Table 13

Age-grade distribution of students in NSW government schools for specific purposes (SSPs), by age and category, mid-year 2022

Age Years:months	AU	BD	ED	IO/AU	IO/IS	IS	JJ	MC	Total		All
									Boys	Girls	
Under 5				≤ 5*	6-10*	≤ 5*		≤ 5*	11-20*	≤ 5*	19
5-5:11	7		≤ 5*	8	126	≤ 5*		34	147	36	183
6-6:11	10		11	16	240	9		47	247	86	333
7-7:11	11		29	11	229	6		46	256	77	333
8-8:11	6		33	15	284	6		47	288	106	394
9-9:11	15		44	14	231	8		65	275	102	377
10-10:11	11	6-10*	54	24	223	≤ 5*		49	276	100	376
11-11:11	8	24	60	16	210	9		67	303	97	400
12-12:11	10	34	83	19	242	12		75	374	105	479
13-13:11	11	70	98	24	265	≤ 5*	≤ 5*	76	393	167	560
14-14:11	8	105	133	18	259	≤ 5*	14	83	430	205	635
15-15:11	≤ 5*	84	169	24	247	8	37	89	461	210	671
16-16:11	≤ 5*	50	174	12	231	8	41	50	401	170	571
17-17:11	≤ 5*	13	106	9	227	≤ 5*	42	46	318	142	460
18-18:11	≤ 5*		35	6-10*	121	≤ 5*	21	20	150	64	214
19 and over		≤ 5*	11-20*		≤ 5*		6-10*	≤ 5*	11-20*	6-10*	24
Subtotal									4,347	1,682	
Total	109	389	1,042	218	3,147	97	166	800	6,029		6,029

Key:

A	Autism
BD	Behaviour disorder
ED	Emotional disturbance
IO/AU	Both autism and moderate intellectual disability
IO/IS	Moderate or severe intellectual disability
IS	Severe intellectual disability
JJ	Juvenile Justice
MC	Multicategorical

Notes:

- Students in SSPs, except those in juvenile justice schools, are reported by the type of support class they are enrolled in, not by the type of SSP.
- The total figures include additional support class types (physical disability, tutorial class, visual disability, both visual and hearing disability). These figures have not been provided separately in the table due to suppression rules.
- Data has been confidentialised where necessary to suppress enrolments of 5 or fewer students.
- Refer to explanatory note 3.

Table 14

Age distribution of students in NSW government preschools and early intervention programs, mid-year 2022

Preschools

Age Years:months	All students	Aboriginal and Torres Strait Islander students
3 and under	151	39
4-4:11	3,129	435
5-5:11	943	201
6 and over		
Total	4,223	675

Early intervention

Age Years:months	All students	Aboriginal and Torres Strait Islander students
3 and under	36	
4-4:11	307	64*
5-5:11	375	62
6 and over		
Total	718	126

Notes:

- Figures reported above are children enrolled in a preschool or an Early Intervention program that is run by a NSW government school. These government preschool classes provide full-time or part-time schooling at pre-primary level.
- In NSW, most children receiving a preschool education are enrolled at a government funded community preschool or in a Long Day Care centre which offers a preschool program.
- The number of Aboriginal and Torres Strait Islander students aged 3 and under is less than 10. For privacy reasons, this number has been included in the total for 4-4:11.
- Refer to explanatory note 9.

Table 15**Enrolments (FTE) in distance education by year of schooling, mid-year 2022**

Primary	Boys	Girls	Total
Kindergarten	37	57	94
Year 1	65	61	126
Year 2	65	62	127
Year 3	75	55	130
Year 4	68	61	129
Year 5	92	72	164
Year 6	59	38	97
Primary support	1	1	2
Total	462	407	869

Secondary	Boys	Girls	Total
Year 7	39	37	76
Year 8	92	81	173
Year 9	171	203	374
Year 10	242	293	535
Year 11	105.6	192.8	298.4
Year 12	72.8	99.7	172.5
Secondary support	27	15	42
Total	749.4	921.5	1,670.9

Total all students	1,211.4	1,328.5	2,539.9
---------------------------	----------------	----------------	----------------

Notes:

- All enrolments are reported in full-time equivalent units (FTE), and include full-time and part-time students whose main school is the distance education centre.
- Refer to explanatory note 6.

Table 16

Enrolments (FTE) of Aboriginal students by SA4 groupings and grade group in NSW government schools, mid-year 2022

Statistical area level 4 group	K-2	Y3-6	Primary total	Y7-10	Y11-12	Secondary total	SA4 groups total	% Aboriginal
Sydney-North	136	188	324	160	56.0	216.0	567.0	0.6%
Sydney-Inner	444	574	1,018	512	153.5	665.5	1,737.5	3.1%
Sydney-South	337	451	788	442	134.8	576.8	1,397.8	1.9%
Sydney-South West	1,286	1,719	3,005	1,448	357.8	1,805.8	4,939.8	5.4%
Sydney-West	1,176	1,400	2,576	1,083	302.9	1,385.9	4,103.9	4.4%
Sydney-North West	1,153	1,425	2,578	1,251	269.2	1,520.2	4,162.2	6.2%
Sydney total	4,532	5,757	10,289	4,896	1,274.2	6,170.2	16,908.2	3.6%
North East NSW	2,465	3,536	6,001	3,401	824.6	4,225.6	10,266.6	17.5%
North West NSW	4,759	6,159	10,918	5,717	1,215.6	6,932.6	17,977.6	28.1%
South West NSW	2,421	3,045	5,466	2,828	573.2	3,401.2	9,011.2	17.7%
South East NSW	1,961	2,630	4,591	2,432	552.1	2,984.1	7,669.1	11.0%
Central Coast, Newcastle	2,425	3,024	5,449	2,753	706.9	3,459.9	9,032.9	11.7%
Regional total	14,031	18,394	32,425	17,131	3,872.4	21,003.4	53,957.4	16.8%
NSW	18,563	24,151	42,714	22,027	5,146.6	27,173.6	70,865.6	9.0%
Aboriginal total as a percentage of total NSW enrolments	9.2%	8.8%	9.0%	9.7%	6.3%	8.8%	9.0%	

Notes:

- Students in Distance Education and Opportunity Classes (OC) are included with their appropriate grade levels.
- Aggregate geographical data are reported by groupings of ABS statistical area 4 (refer to the maps).
- From 2020, students in mainstream support classes are reported by their underlying grade of enrolment.
- There were 978 Aboriginal students enrolled in SSPs, representing 16.2% of total SSP enrolments. Aboriginal students in SSPs are not included in the grade group data but are included in the SA4 groups total column.
- As of 2022, Norfolk Island (previously included in NSW total) is no longer under the jurisdiction of NSW, and therefore not included in the figures.
- Refer to explanatory notes 2, 9 and 17.

Table 17

Enrolment of students of language background other than English (LBOTE) in NSW government schools, March 2022 by SA4 groupings and grade groups

SA4 groupings	K-2	3-6	Primary total	7-10	11-12	Secondary total	SA4 groups total	% LBOTE
Sydney-North	11,738	15,490	27,228	10,800	4,665	15,465	42,878	48.6%
Sydney-Inner	7,116	9,313	16,429	9,130	4,233	13,363	29,974	53.0%
Sydney-South	11,198	15,551	26,749	12,709	5,767	18,476	45,665	60.7%
Sydney-South West	12,898	19,654	32,552	17,541	7,569	25,110	58,063	63.6%
Sydney-West	19,285	25,885	45,170	16,016	6,397	22,413	68,103	72.7%
Sydney-North West	6,509	9,279	15,788	6,609	3,270	9,879	25,796	38.1%
Sydney total	68,744	95,172	163,916	72,805	31,901	104,706	270,479	57.2%
North East NSW	1,283	1,800	3,083	1,336	499	1,835	4,928	8.2%
North West NSW	1,048	1,344	2,392	1,050	462	1,512	3,924	6.0%
South West NSW	1,163	1,549	2,712	1,072	536	1,608	4,376	8.4%
South East NSW	2,338	3,182	5,520	2,625	1,081	3,706	9,293	13.0%
Central Coast, Newcastle	2,198	3,017	5,215	2,841	1,038	3,879	9,154	11.6%
Regional total	8,030	10,892	18,922	8,924	3,616	12,540	31,675	9.7%
NSW	76,774	106,064	182,838	81,729	35,517	117,246	302,154	37.7%

Notes:

- LBOTE enrolments for 2022 are compared to enrolments (headcount) in March 2022.
- As of 2022, Norfolk Island (previously included in NSW total) is no longer under the jurisdiction of NSW, and therefore not included in the figures.
- There were 2,070 LBOTE students enrolled in SSPs, representing 41.4% of total SSP enrolments. This figure is not displayed separately for each SA4 grouping but is included in the SA4 Groups Total column.
- Primary support students are included in Year 3 to 6. Secondary support students are included in Year 7 to 10.
- For more detailed analysis of students of language background other than English, please refer to CESE fact sheet [Schools: language diversity in NSW](#).
- Refer to explanatory notes 11 and 17.

Table 18

Enrolments (FTE) in NSW government schools by FOEI quarters and SA4 groupings, April 2022

SA4 groupings	Quarter 1	Quarter 2	Quarter 3	Quarter 4	Total	Quarter 1 (%)
Sydney-North	2,805	9,299	26,439	49,826	88,369	3.2%
Sydney-Inner	4,728	7,874	16,245	28,376	57,223	8.3%
Sydney-South	15,172	19,237	22,660	18,374	75,443	20.1%
Sydney-South West	34,169	27,880	19,639	10,476	92,164	37.1%
Sydney-West	24,699	20,470	25,299	24,617	95,085	26.0%
Sydney-North West	12,361	16,309	18,609	20,580	67,859	18.2%
Sydney total	93,934	101,069	128,891	152,249	476,143	19.7%
North East NSW	20,117	18,664	12,978	8,240	59,999	33.5%
North West NSW	28,880	20,320	10,740	5,785	65,725	43.9%
South West NSW	19,840	16,534	9,926	5,588	51,888	38.2%
South East NSW	19,537	21,558	16,996	13,205	71,296	27.4%
Central Coast, Newcastle	19,984	22,892	19,617	16,518	79,011	25.3%
Regional total	108,358	99,968	70,257	49,336	327,919	33.0%
NSW	202,292	201,037	199,148	201,585	804,062	25.2%

Notes:

- Enrolments are from system extracts at beginning of Term 2 and are not mid-year census enrolments which are extracted in August.
- Refer to explanatory notes 15 and 17.

Study patterns

Table 19

Board Developed Course enrolments in Year 10 subjects in NSW government schools, 2022

Course ID	Course name	Hours	Boys	Girls	Total
300	English	200	26,965	25,542	52,507
302	English (Life Skills)		1,610	671	2,281
323	Mathematics	200	27,070	25,597	52,667
325	Mathematics (Life Skills)		1,599	676	2,275
350	Science	200	27,007	25,564	52,571
352	Science (Life Skills)		1,595	666	2,261
410	Aboriginal Studies	200	127	193	320
411	Aboriginal Studies	100	90	98	188
414	Aboriginal Studies Life Skills	100	17	7	24
415	Aboriginal Studies Life Skills	200	16	6	22
430	Commerce	200	5,993	5,112	11,105
431	Commerce	100	1,520	1,531	3,051
433	Commerce Life Skills	100	14	3	17
434	Commerce Life Skills	200	12	5	17
440	Geography	200	194	139	333
441	Geography	100	99	206	305
450	History	200	1,472	1,537	3,009
451	History	100	759	973	1,732
453	History Elective Life Skills	100	10	3	13
454	History Elective Life Skills	200	5	4	9
500	Work Education	200	325	255	580
501	Work Education	100	564	538	1,102
503	Work Education Life Skills	100	121	49	170
504	Work Education Life Skills	200	210	100	310
791	Aboriginal Languages	100	1	3	4
792	Aboriginal Languages (Life Skills)		10	2	12
793	Aboriginal Languages Life Skills	100	2		2
800	Arabic	200	17	21	38
801	Arabic	100		3	3
810	Chinese	200	115	164	279
811	Chinese	100	24	46	70

Table 19

Board Developed Course enrolments in Year 10 subjects in NSW government schools, 2022 (continued)

Course ID	Course name	Hours	Boys	Girls	Total
813	Chinese Life Skills	200	1		1
814	Chinese Life Skills	100	2		2
820	Classical Greek	200		1	1
870	French	200	173	458	631
871	French	100	61	124	185
873	French Life Skills	200	1		1
880	German	200	80	59	139
881	German	100	37	28	65
884	German Life Skills	200	1		1
910	Indonesian	200	17	53	70
911	Indonesian	100		8	8
920	Italian	200	28	42	70
921	Italian	100	50	57	107
923	Italian Life Skills	100	6	2	8
924	Italian Life Skills	200	1	1	2
930	Japanese	200	826	1,208	2,034
931	Japanese	100	240	231	471
933	Japanese Life Skills	200	5	1	6
934	Japanese Life Skills	100	9	1	10
940	Korean	200	17	51	68
941	Korean	100	1	7	8
950	Latin	200	41	57	98
951	Latin	100		3	3
981	Macedonian	200	5	2	7
990	Modern Greek	200	10	6	16
991	Modern Greek	100		1	1
1010	Russian	200	2	4	6
1011	Russian	100	1	1	2
1040	Spanish	200	33	57	90
1041	Spanish	100	23	46	69
1043	Spanish Life Skills	200	2		2
1050	Turkish	200	6	7	13

Table 19

Board Developed Course enrolments in Year 10 subjects in NSW government schools, 2022 (continued)

Course ID	Course name	Hours	Boys	Girls	Total
1071	Vietnamese	200	16	23	39
1072	Vietnamese	100	5	6	11
1605	Agricultural Technology	200	2,118	1,745	3,863
1606	Agricultural Technology	100	771	645	1,416
1608	Agricultural Technology Life Skills	100	43	25	68
1609	Agricultural Technology Life Skills	200	67	18	85
1625	Food Technology	200	4,296	7,006	11,302
1626	Food Technology	100	1,643	2,405	4,048
1628	Food Technology Life Skills	100	185	97	282
1629	Food Technology Life Skills	200	271	136	407
1650	Design and Technology	200	807	679	1,486
1651	Design and Technology	100	599	372	971
1653	Design and Technology Life Skills	100	37	15	52
1654	Design and Technology Life Skills	200	106	37	143
1700	Graphics Technology	200	579	240	819
1701	Graphics Technology	100	249	79	328
1703	Graphics Technology Life Skills	100	2	1	3
1704	Graphics Technology Life Skills	200	3		3
1800	Industrial Technology (Automotive)	200	125	4	129
1801	Industrial Technology (Automotive)	100	96	8	104
1802	Industrial Technology (Building and Construction)	200	378	42	420
1803	Industrial Technology (Building and Construction)	100	187	24	211
1806	Industrial Technology (Electronics)	200	344	12	356
1807	Industrial Technology (Electronics)	100	254	14	268
1808	Industrial Technology (Engineering)	200	2,162	218	2,380
1809	Industrial Technology (Engineering)	100	617	88	705
1810	Industrial Technology (Farm Maintenance)	200	12	6	18
1811	Industrial Technology (Farm Maintenance)	100	7	10	17
1814	Industrial Technology (Metal)	200	2,026	224	2,250
1815	Industrial Technology (Metal)	100	921	200	1,121
1816	Industrial Technology (Multimedia/Photography)	200	736	251	987
1817	Industrial Technology (Multimedia/Photography)	100	256	103	359

Table 19

Board Developed Course enrolments in Year 10 subjects in NSW government schools, 2022 (continued)

Course ID	Course name	Hours	Boys	Girls	Total
1820	Industrial Technology (Timber)	200	5,417	1,193	6,610
1821	Industrial Technology (Timber)	100	1,693	515	2,208
1830	Information and Software Technology	200	2,996	860	3,856
1831	Information and Software Technology	100	992	338	1,330
1832	Information and Software Technology (Life Skills)		36	8	44
1833	Information and Software Technology Life Skills	100	38	9	47
1860	Industrial Technology –Automotive Life Skills	100	2		2
1861	Industrial Technology –Building and Construction Life Skills	100	1		1
1863	Industrial Technology –Electronics Life Skills	100	2		2
1864	Industrial Technology –Engineering Life Skills	100	2		2
1865	Industrial Technology –Farm Maintenance Life Skills	100	1		1
1867	Industrial Technology –Metal Life Skills	100	20		20
1868	Industrial Technology –Multimedia Life Skills	100	2	1	3
1870	Industrial Technology –Timber Life Skills	100	66	25	91
1880	Industrial Technology –Automotive Life Skills	200	1		1
1881	Industrial Technology –Building and Construction Life Skills	200	3	1	4
1883	Industrial Technology –Electronics Life Skills	200	2		2
1884	Industrial Technology –Engineering Life Skills	200	3	1	4
1887	Industrial Technology –Metal Life Skills	200	32	1	33
1888	Industrial Technology –Multimedia Life Skills	200	7	1	8
1890	Industrial Technology –Timber Life Skills	200	103	13	116
1900	Textiles Technology	200	60	1,166	1,226
1901	Textiles Technology	100	66	611	677
1903	Textiles Technology Life Skills	100	24	11	35
1906	Textiles Technology Life Skills	200	3	10	13
2000	Dance	200	38	1,009	1,047
2001	Dance	100	24	271	295
2002	Dance (Life Skills)		1	8	9
2003	Dance Life Skills	100	7	5	12
2010	Drama	200	756	1,699	2,455
2011	Drama	100	282	667	949
2012	Drama (Life Skills)		22	12	34

Table 19

Board Developed Course enrolments in Year 10 subjects in NSW government schools, 2022 (continued)

Course ID	Course name	Hours	Boys	Girls	Total
2013	Drama Life Skills	100	24	12	36
2050	Music	200	3,046	2,641	5,687
2051	Music	100	957	786	1,743
2052	Music (Life Skills)		135	52	187
2053	Music Life Skills	100	156	76	232
2060	Visual Arts	200	1,981	5,144	7,125
2061	Visual Arts	100	784	1,641	2,425
2062	Visual Arts (Life Skills)		327	153	480
2063	Visual Arts Life Skills	100	195	101	296
2070	Visual Design	200	255	585	840
2071	Visual Design	100	222	575	797
2072	Visual Design (Life Skills)		14	8	22
2073	Visual Design Life Skills	100	9	6	15
2080	Photographic and Digital Media	200	1,153	2,142	3,295
2081	Photographic and Digital Media	100	741	1,091	1,832
2082	Photographic and Digital Media (Life Skills)		21	18	39
2083	Photographic and Digital Media Life Skills	100	16	7	23
2420	Personal Development, Health and P.E.	200	22,530	21,226	43,756
2421	Personal Development, Health and P.E.	100	4,053	3,917	7,970
2423	Personal Development, Health and P.E. Life Skills		1,585	666	2,251

Number of students meeting the curriculum requirements for the Record of School Achievement (RoSA), Year 10 students in NSW government schools, 2022

	Boys	Girls	Total
Number of students	27,735	25,648	53,383

Source: Department of Education, data derived from NSW Education Standards Authority (NESA) data, February 2023.

Notes:

- The table only includes Board Developed Courses.
- The table includes students studying a language through the Secondary College of Languages (formerly Saturday School of Community Languages).
- Hours equal to the number of hours studied over Years 9 and 10.
- From 2012, eligible students who leave school before receiving their HSC will receive the NSW RoSA.
- Students need to complete the mandatory requirements for Stage 5 (Year 10) to be eligible for a RoSA. They must have:
 - attended a government school, an accredited non-government school or a recognised school outside NSW;
 - undertaken and completed courses of study that satisfy NESA curriculum and assessment requirements for the Record of School Achievement;
 - complied with any other regulations or requirements (such as attendance) imposed by the Minister or NESA; and
 - completed Year 10.
- Students intending to leave school before completing their HSC can take optional online literacy and numeracy tests. They are designed to provide an overview of a student's level of achievement in these areas.
- Students are required to complete the following mandatory curriculum for the RoSA:
 - English
 - Mathematics
 - Science
 - Human Society and its Environments
 - Languages other than English
 - Technological and Applied Studies
 - Creative Arts
 - Personal Development, Health and Physical Education.

Table 20

Course enrolments in Year 11 and Year 12 subjects in NSW government schools, 2022

Course name	Units	Year 11			Year 12		
		Boys	Girls	Total	Boys	Girls	Total
Aboriginal Studies	2	295	691	986	143	435	578
Aboriginal Studies Life Skills	2	50	27	77	28	12	40
Agriculture	2	613	614	1,227	379	421	800
Agriculture Life Skills	2	49	22	71	33	13	46
Ancient History	2	2,709	3,288	5,997	1,770	2,229	3,999
Ancient History Life Skills	2	80	46	126	61	33	94
Arabic Continuers	2	36	75	111	59	113	172
Arabic Extension	1				10	29	39
Armenian Continuers	2	1	1	2	3	1	4
Automotive	2	19	3	22	9	2	11
Automotive	4	2	1	3		1	1
Automotive Examination (Mechanical Technology)	2				9	3	12
Automotive Specialisation Study	1	1		1			
Automotive Specialisation Study	2	1		1			
Biology	2	5,303	8,906	14,209	3,613	6,744	10,357
Business and Economics Life Skills	2	54	26	80	44	21	65
Business Services	2	391	742	1,133	304	706	1,010
Business Services	4				25	49	74
Business Services Examination	2				207	530	737
Business Services Specialisation Study	1				1	2	3
Business Studies	2	6,666	5,747	12,413	4,655	4,089	8,744
Chemical World Science Life Skills	2	7	1	8	18	6	24
Chemistry	2	4,285	3,798	8,083	2,985	2,703	5,688
Chinese and Literature	2	80	108	188	104	92	196
Chinese Beginners	2	18	20	38	14	28	42
Chinese Continuers	2	41	53	94	18	38	56
Chinese Extension	1				4	6	10
Chinese in Context	2	37	75	112	36	61	97
Citizenship and Legal Studies Life Skills	2	33	27	60	22	16	38
Classical Greek Continuers	2	1	7	8	1		1
Classical Greek Extension	1					2	2

Table 20

Course enrolments in Year 11 and Year 12 subjects in NSW government schools, 2022 (continued)

Course name	Units	Year 11			Year 12		
		Boys	Girls	Total	Boys	Girls	Total
Community and Family Studies	2	877	6,396	7,273	564	4,866	5,430
Community and Family Studies Life Skills	2	76	127	203	77	101	178
Construction	2	2,858	260	3,118	1,830	136	1,966
Construction	4	15	3	18	21	4	25
Construction Examination	2				1,218	79	1,297
Construction School-based Apprenticeship	2				2		2
Creative Arts Life Skills	2	346	148	494	323	147	470
Croatian Continuers	2				1		1
Dance	2	32	594	626	23	502	525
Dance Life Skills	2	3	9	12	2	7	9
Design and Technology	2	1,485	876	2,361	895	584	1,479
Design and Technology Life Skills	2	72	29	101	50	25	75
Drama	2	604	1,313	1,917	500	1,037	1,537
Drama Life Skills	2	26	29	55	33	21	54
Dutch Continuers	2	1		1			
Earth and Environmental Science	2	1,074	1,134	2,208	750	613	1,363
Earth and Space Science Life Skills	2	64	23	87	41	16	57
Economics	2	2,540	1,299	3,839	1,730	914	2,644
Electrotechnology	2	12		12	5		5
Electrotechnology	4	2		2			
Electrotechnology Examination	2				3		3
Engineering Studies	2	2,317	297	2,614	1,371	148	1,519
English (Advanced)	2	5,719	8,072	13,791	4,634	6,895	11,529
English (Standard)	2	10,055	10,019	20,074	8,267	8,809	17,076
English EAL/D	2	503	572	1,075	582	641	1,223
English Extension	1	994	1,740	2,734			
English Extension 1	1				438	1,173	1,611
English Extension 2	1				149	484	633
English Life Skills	2	1,356	643	1,999	1,164	572	1,736
English Studies	2	3,945	2,530	6,475	3,262	2,402	5,664
English Studies Examination	2				1,111	794	1,905

Table 20

Course enrolments in Year 11 and Year 12 subjects in NSW government schools, 2022 (continued)

Course name	Units	Year 11			Year 12		
		Boys	Girls	Total	Boys	Girls	Total
Entertainment Industry	2	399	416	815	328	292	620
Entertainment Industry	4					2	2
Entertainment Industry Examination	2				249	230	479
Entertainment Industry Specialisation Study	1				112	124	236
Filipino Continuers	2	1	1	2	1	5	6
Financial Services	2	6	3	9	13	5	18
Financial Services	4				1		1
Financial Services Examination	2				14	4	18
Financial Services Specialisation Study	1		1	1			
Food Technology	2	1,298	2,168	3,466	720	1,488	2,208
Food Technology Life Skills	2	374	207	581	316	153	469
French Beginners	2	77	220	297	37	161	198
French Continuers	2	79	164	243	47	132	179
French Extension	1				9	27	36
Geography	2	1,222	1,071	2,293	842	780	1,622
Geography Life Skills	2	101	44	145	62	24	86
German Beginners	2	31	30	61	20	31	51
German Continuers	2	53	43	96	37	32	69
German Extension	1				14	2	16
Hindi Continuers	2	7	12	19	8	11	19
History Extension	1				217	352	569
Hospitality	2	2,235	4,229	6,464	1,279	2,866	4,145
Hospitality	4	8	9	17	83	106	189
Hospitality Examination (Food and Beverage)	2				543	1,544	2,087
Hospitality Examination (Kitchen Operations and Cookery)	2				440	827	1,267
Hospitality Specialisation Study	2				4	7	11
Human Services	2	25	146	171	27	242	269
Human Services	4		3	3			
Human Services Examination	2				14	120	134
Human Services Specialisation Study	1					4	4

Table 20

Course enrolments in Year 11 and Year 12 subjects in NSW government schools, 2022 (continued)

Course name	Units	Year 11			Year 12		
		Boys	Girls	Total	Boys	Girls	Total
Human Society and its Environment Life Skills	2	500	202	702	375	185	560
IDT Examination (Digital Animation)	2				15	5	20
IDT Examination (Networking and Hardware)	2				1		1
IDT Examination (Web and Software Applications)	2				150	37	187
Indonesian and Literature	2	1	2	3		4	4
Indonesian Beginners	2	2	8	10	6	14	20
Indonesian Continuers	2	7	19	26	7	21	28
Indonesian Extension	1					5	5
Industrial Technology	2	4,651	1,136	5,787	2,825	604	3,429
Industrial Technology Life Skills	2	160	28	188	139	20	159
Information and Digital Technology	2	285	62	347	194	50	244
Information and Digital Technology	4				17		17
Information and Digital Technology Specialisation Study	2				14	1	15
Information and Digital Technology Specialisation Study	3				10	3	13
Information Processes and Technology	2	1,245	297	1,542	862	256	1,118
Information Processes and Technology Life Skills	2	59	20	79	66	8	74
Investigating Science	2	1,468	1,260	2,728	1,018	791	1,809
Investigating Science Life Skills	2	357	151	508	264	137	401
Italian Beginners	2	30	60	90	24	76	100
Italian Continuers	2	6	20	26	12	29	41
Italian Extension	1					3	3
Japanese Beginners	2	321	367	688	228	254	482
Japanese Continuers	2	291	410	701	198	343	541
Japanese Extension	1				45	77	122
Japanese in Context	2	16	30	46	18	19	37
Khmer Continuers	2	7	5	12	5	7	12
Korean and Literature	2	12	17	29	11	17	28
Korean Beginners	2	39	123	162	11	85	96
Korean Continuers	2	7	8	15	3	6	9
Korean in Context	2	21	33	54	11	31	42

Table 20

Course enrolments in Year 11 and Year 12 subjects in NSW government schools, 2022 (continued)

Course name	Units	Year 11			Year 12		
		Boys	Girls	Total	Boys	Girls	Total
Latin Continuers	2	20	59	79	11	34	45
Latin Extension	1				5	22	27
Legal Studies	2	2,769	5,060	7,829	2,026	3,533	5,559
Living World Science Life Skills	2	152	83	235	72	42	114
Macedonian Continuers	2	3	2	5	1	7	8
Mathematics Advanced	2	6,739	5,552	12,291	4,491	4,034	8,525
Mathematics Extension	1	3,423	2,366	5,789			
Mathematics Extension 1	2				2,816	1,903	4,719
Mathematics Extension 2	2				1,290	666	1,956
Mathematics Life Skills	2	1,247	554	1,801	1,034	476	1,510
Mathematics Standard	2	10,939	11,405	22,344			
Mathematics Standard 1	2				1,890	1,537	3,427
Mathematics Standard 1 Examination	2				758	714	1,472
Mathematics Standard 2	2				7,157	8,200	15,357
Modern Greek Beginners	2	17	36	53	4	12	16
Modern Greek Continuers	2	9	12	21	2	20	22
Modern Greek Extension	1				2	9	11
Modern Hebrew Continuers	2				1	1	2
Modern History	2	3,837	3,675	7,512	2,655	2,547	5,202
Modern History Life Skills	2	106	41	147	86	27	113
Music 1	2	1,955	1,589	3,544	1,407	1,198	2,605
Music 2	2	273	265	538	200	174	374
Music Extension	1				95	87	182
Music Life Skills	2	120	49	169	96	52	148
Persian Continuers	2	6	18	24	9	12	21
Personal Development, Health and PE Life Skills	2	957	350	1,307	755	342	1,097
Personal Development, Health and Physical Education	2	5,119	5,948	11,067	3,449	4,869	8,318
Physical World Science Life Skills	2	8	2	10	12	1	13
Physics	2	4,734	1,376	6,110	3,447	934	4,381
Polish Continuers	2	1	5	6	1	5	6
Portuguese Continuers	2	2	3	5	2	6	8

Table 20

Course enrolments in Year 11 and Year 12 subjects in NSW government schools, 2022 (continued)

Course name	Units	Year 11			Year 12		
		Boys	Girls	Total	Boys	Girls	Total
Primary Industries	2	562	352	914	347	268	615
Primary Industries	4	10	7	17	12	10	22
Primary Industries Examination	2				203	204	407
Primary Industries Specialisation Study	1				12	8	20
Primary Industries Specialisation Study	2				5		5
Primary Industries Specialisation Study	4				3	5	8
Punjabi Continuers	2	9	11	20	6	10	16
Retail Services	2	602	917	1,519	377	654	1,031
Retail Services	4	25	4	29	3	7	10
Retail Services Examination	2				254	457	711
Russian Continuers	2	6	17	23	5	17	22
Science Extension	1				113	163	276
Serbian Continuers	2	9	12	21	5	11	16
Society and Culture	2	1,147	3,987	5,134	597	2,460	3,057
Society and Culture Life Skills	2	29	23	52	14	22	36
Software Design and Development	2	1,370	192	1,562	991	133	1,124
Spanish Beginners	2	41	117	158	51	114	165
Spanish Continuers	2	33	32	65	21	48	69
Spanish Extension	1				1	11	12
Studies of Religion I	1	183	195	378	85	113	198
Studies of Religion I Life Skills	1					1	1
Studies of Religion II	2	185	468	653	169	450	619
Studies of Religion II Life Skills	2		3	3	4	6	10
Tamil Continuers	2		1	1	4	4	8
Technology Life Skills	2	316	118	434	247	111	358
Textiles and Design	2	69	1,057	1,126	47	836	883
Textiles and Design Life Skills	2	3	20	23	2	22	24
Tourism, Travel and Events	2	1	4	5	1	2	3
Tourism, Travel and Events Examination	2					1	1
Turkish Continuers	2	5	11	16	7	13	20
Vietnamese Continuers	2	46	71	117	60	88	148

Table 20**Course enrolments in Year 11 and Year 12 subjects in NSW government schools, 2022 (continued)**

Course name	Units	Year 11			Year 12		
		Boys	Girls	Total	Boys	Girls	Total
Visual Arts	2	1,936	4,911	6,847	1,214	3,491	4,705
Visual Arts Life Skills	2	339	228	567	234	174	408
Work and the Community Life Skills	2	873	369	1,242	653	297	950

Source: Department of Education, data derived from NSW Education Standards Authority (NESA) data, February 2023.

Note:

- Based on school of tuition, NESA developed courses only, and includes subjects studied through distance education, the NSW School of Languages and Aurora College.

Progress measures

Table 21

Apparent retention (%) in NSW government schools, 2012–2022

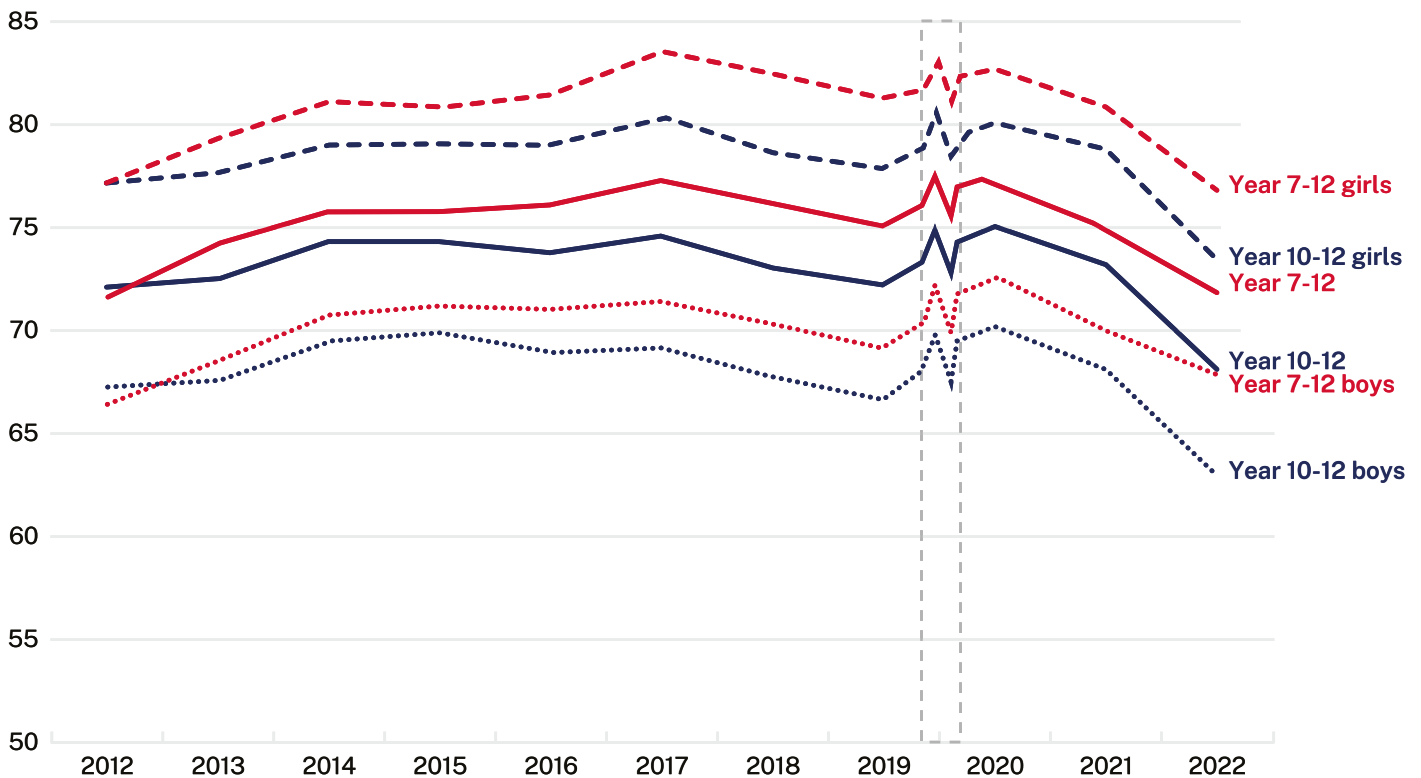
Year	Year 7–10			Year 7–11			Year 7–12			Year 10–11			Year 10–12		
	Boys	Girls	Total	Boys	Girls	Total	Boys	Girls	Total	Boys	Girls	Total	Boys	Girls	Total
2012	101.4	102.8	102.1	86.1	93.3	89.6	66.9	77.4	72.0	84.3	91.0	87.6	67.3	77.3	72.2
2013	102.0	102.1	102.0	88.1	94.6	91.3	69.0	79.7	74.3	86.9	92.0	89.4	67.6	77.8	72.6
2014	103.0	103.2	103.1	89.3	94.9	92.1	70.9	81.2	75.9	87.6	92.9	90.2	69.9	79.0	74.4
2015	103.3	103.9	103.6	90.2	95.9	93.0	71.3	80.7	75.9	87.6	93.0	90.2	70.0	79.0	74.4
2016	103.7	105.0	104.3	89.4	96.9	93.1	71.1	81.6	76.2	86.5	93.3	89.9	69.0	79.1	73.9
2017	103.7	104.4	104.0	88.8	96.0	92.4	71.5	83.4	77.4	85.6	91.5	88.5	69.2	80.3	74.7
2018	103.4	103.1	103.2	86.7	95.2	90.9	70.4	82.4	76.3	83.6	91.2	87.3	67.8	78.5	73.1
2019	103.0	102.7	102.8	86.2	93.9	90.0	69.2	81.4	75.2	83.4	91.1	87.2	66.7	78.0	72.3
2020	107.7	104.4	106.1	89.3	95.0	92.0	72.6	82.5	77.5	86.7	92.5	89.5	70.2	80.1	75.0
2021	105.1	101.0	103.1	86.0	91.0	88.5	70.1	80.9	75.4	79.9	87.2	83.4	68.1	78.8	73.3
2022	104.1	99.0	101.6	82.2	86.7	84.4	67.9	76.9	72.3	78.2	85.8	81.9	63.1	73.6	68.2

Notes:

- Apparent retention is based on full-time equivalent (FTE) units, including full-time and part-time students. Students enrolled in distance education classes are included with their appropriate grade levels.
- Legislation raising the minimum school leaving age from 15 to 17 came into effect in January 2010. The Year 12 cohort in 2012 was the first group of students who were required to complete Year 10. This meant that the Year 10 enrolment figure was higher than in previous years, resulting in a relative decline in Year 10 to Year 12 apparent retention in 2012, despite the Year 7 to Year 12 apparent retention rate increasing slightly.
- From 2020, students in mainstream support classes (previously excluded from this calculation) are reported by their underlying grade of enrolment. This results in a rolling break in time-series for apparent retention rates because enrolments increased in 2020 due to the revised counting rule. For more detail, please refer to CESE fact sheet [NSW public school student retention rates by statistical areas](#).
- Refer to explanatory note 10.

Figure 6

Apparent retention (%) in NSW government schools, 2012–2022

**Note:**

- From 2020, students in mainstream support classes (previously excluded from this calculation) are reported by their underlying grade of enrolment. This results in a rolling break in time-series for apparent retention rates because enrolments increased in 2020 due to the revised counting rule. For more detail, please refer to CESE fact sheet [NSW public school student retention rates by statistical areas](#).

Table 22**NSW government school HSC completions, 2017–2022**

Number of students	2017	2018	2019	2020	2021	2022
Students who completed one or more HSC courses (all students)	44,320	42,887	41,415	42,106	41,608	40,611
Students who completed one or more HSC courses (Aboriginal students)	2,108	2,054	2,123	2,192	2,166	2,189
HSC Award (all students)	38,775	38,100	36,886	36,910	36,698	35,492
HSC Award (Aboriginal students)	1,700	1,671	1,804	1,805	1,774	1,726

Source: Department of Education, data derived from NSW Education Standards Authority (NESA) and National Schools Statistics Collection (NSSC) data, February 2023.

Notes:

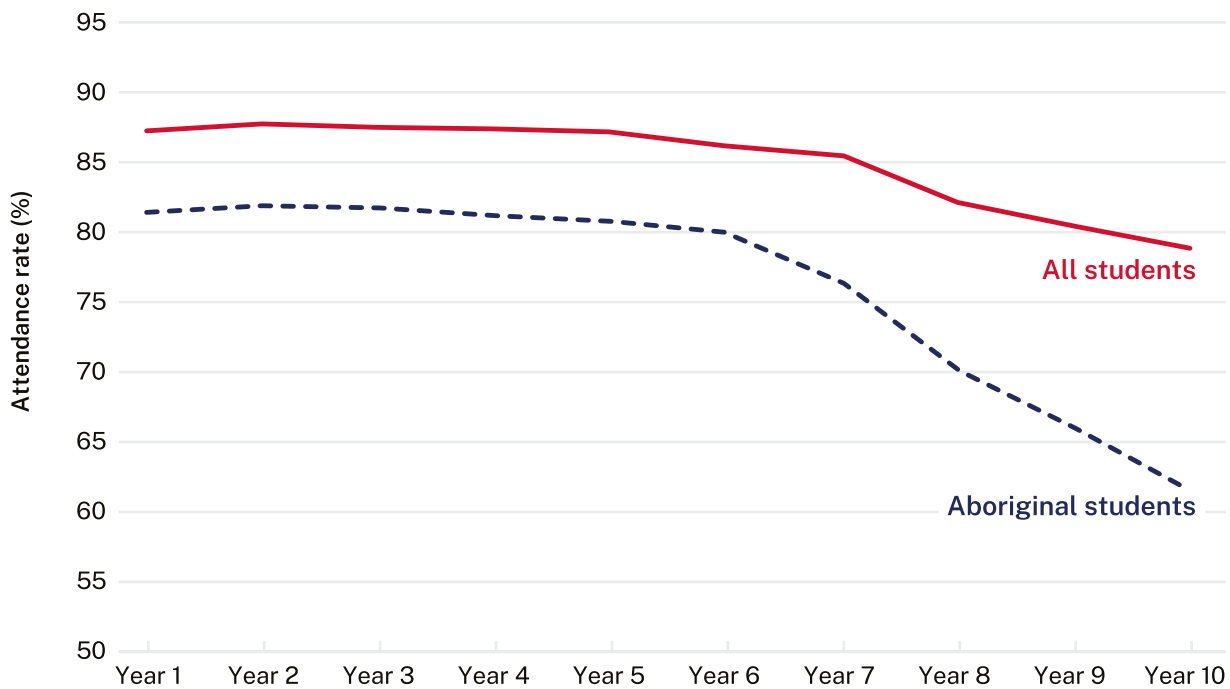
- Identification of Aboriginal students in this table is based on Aboriginal status reported in the National Schools Statistics Collection (NSSC) conducted each August, rather than the NESA data.
- Students who have completed one or more HSC courses but have not yet been awarded the HSC receive a Record of Achievement.
- HSC pathways offer a flexible program for students to complete the HSC over a period of up to five years. The pathways provisions include accumulating courses, repeating courses, acceleration, recognition of prior learning and combining study with part-time traineeships or apprenticeships. These students are included in the count of students who have completed one or more HSC courses.
- Bradfield College included.
- Refer to explanatory notes 9 and 13.

Table 23**Semester 1 attendance rates (%) in NSW government schools, Years 1–10 2022**

Year	Aboriginal students	All students
Year 1	81.4	87.4
Year 2	81.9	87.8
Year 3	81.7	87.6
Year 4	81.2	87.4
Year 5	80.8	87.2
Year 6	80.0	86.3
Primary ungraded	74.2	78.7
Primary total (Years 1–6 including support)	81.1	87.2
Year 7	76.3	85.5
Year 8	70.0	82.1
Year 9	66.2	80.5
Year 10	61.4	78.9
Junior Secondary ungraded	57.2	71.0
Secondary total (Years 7–10 including support)	68.3	81.6
Years 1–10 (including support)	76.3	85.2

Notes:

- The attendance data are for full-time, Year 1–10 students only (including support) in Semester 1 2022.
- All students in Years 1 to 10 in NSW government schools are regarded as full-time.
- From 2020, students in mainstream support classes are reported by their underlying grade of enrolment. Students in schools for specific purposes (SSPs) are included as 'ungraded'.
- For more detailed analysis of Semester 1 school attendance, please refer to CESE fact sheet [2022 Semester 1 student attendance fact sheet](#).
- Refer to explanatory notes 9 and 16.
- Attendance data from 2021 onwards is impacted by:
 - Changes to calculations rules to align with the revised 2020 National Standards for student attendance data reporting: a) including the final week of Term 2, and b) treating partial absences over 120 minutes as a half day absence (instead of their actual value, calculated as a proportion of a nominal 6-hour day).
 - The continued impact of COVID-19, although there were no statewide lockdowns imposed.
 - Changes to the way attendance is transferred into the department's centralised data warehouse, which significantly improved data quality.

Figure 7**Semester 1 attendance rates (%) in NSW government schools, Years 1–10 2022****Notes:**

- From 2020, students in mainstream support classes are reported by their underlying grade of enrolment.
- Excludes Kindergarten, Years 11 and 12, and students in schools for specific purposes (SSPs).
- Refer to explanatory notes 9 and 16.

Explanatory notes

Each year the education departments of all states and territories in Australia, and the Australian Government Department of Education collect data on government and non-government schools, and their students. Since 1994 the date for collection has been the first Friday in August, as close as possible with the national Census of Population and Housing conducted every five years. The 2022 census of NSW Government schools was conducted on August 5.

This bulletin consolidates data from the department's Semester 1 and mid-year data collections. It also reports on non-government data collected by the Australian Government Department of Education.

Government and non-government school data form part of the National Schools Statistics Collection which is reported annually by the Australian Bureau of Statistics in Schools Australia (Catalogue No. 4221.0).

1. Primary and secondary schools

Primary schools enrol students in Kindergarten to Year 6; secondary schools generally enrol students in Years 7 to 12, although some secondary schools only enrol students in the senior years, that is Years 11 to 12 or the junior years, that is, Years 7 to 10.

2. Central/Community schools

Central/community schools have primary and secondary departments and may be established where there is an enrolment in secondary classes of 20 or more. Enrolments in primary departments and secondary departments are included with the appropriate student data.

3. Schools for specific purposes

Schools for specific purposes (SSPs) or Special Schools support students with intellectual disability, mental health disorder or autism spectrum disorder, students with physical disability or sensory impairment, and students with learning difficulties or behaviour disorder. Students in SSPs are usually counted by type of class rather than by disability type as many students have comorbid disability. Multi-categorical classes include students with one or more than one disability with the focus being on placing students together who have similar needs. Some SSPs have no permanent enrolments because the children temporarily attending them are enrolled and counted in their own schools. These are mainly hospital schools.

4. Government preschools

From 2020, School of the Air preschool is reported separately from Dubbo School of Distance Education preschool.

5. Support classes in mainstream schools

The majority of support classes are established in mainstream primary, secondary and central schools. Specialist support classes cater for students with moderate to high learning and support needs including students with intellectual disability, mental health disorder, autism spectrum disorder, physical disability, sensory impairment and behaviour disorders. Many students have comorbid disability. Multi-categorical classes include students with one or more than one disability with the focus being on placing students together who have similar needs. Students enrolled in support classes are reported according to the type of class rather than by their year of schooling. Support class enrolments are included with other primary and secondary enrolments in some tables. From 2020, in some tables students in support classes in mainstream schools are reported by their underlying grade of enrolment. Please refer to 'Notes' section under each table.

6. Distance education

Distance education centres (DECs) provide schooling for students who are isolated or whose special circumstances prevent them from attending a regular school. They operate either as separate schools or as units within regular primary, central and high schools. Students enrolled in DECs are counted in their corresponding years of schooling.

In conjunction with the NSW School of Languages and Aurora College, DECs also provide individual subject enrolment, widening study opportunities for secondary students. These students are enrolled and counted at their home schools.

7. Part-time students

Students in Years 11 or 12 can enrol to study as a part-time student or a full-time student. For the annual census, a part-time student is enrolled in less than 10 units, regardless of where those units are studied. All Kindergarten to Year 10 students are considered to be full-time.

8. Full-time equivalent enrolments

Student enrolments are generally reported in fulltime equivalent (FTE) units. The FTE for students studying less than 10 units, the minimum workload, is determined by the formula: $0.1 \times$ the number of units studied and represented as a proportion of the full-time enrolment of 1.0 FTE.

9. Aboriginal and Torres Strait Islander students

Students are counted as Aboriginal or Torres Strait Islanders if they identify themselves on the school enrolment form.

Throughout this report the term 'Aboriginal' is used to describe the many nations, language groups and clans in NSW, including those from the Torres Strait.

10. Apparent Retention Rates (ARR)

Retention rates are 'apparent' as they do not track individual students through their final years of secondary schooling. What they measure is the ratio of the total number of students in a designated year (for example, Year 12 in 2022) divided by the total number of students in a previous year (for example, Year 7 in 2017). This would be the Year 7 to 12 apparent retention rate in 2022.

Care should be taken in the interpretation of apparent retention rates, which can exceed 100%, because the method of calculation does not take into account a range of factors such as migration, interstate movements of students, transfers to and from non-government schools, part-time schooling, students repeating a year of schooling, or students pursuing other education and training pathways.

11. Language Background other than English (LBOTE)

Students are counted as being of language background other than English if in their home a language other than English is spoken by the students, parents or guardians.

12. Class size

The audit of class sizes in NSW government primary schools is undertaken in March each year. The audit does not include schools for specific purposes, distance education centres or intensive English centres. The number of classes, average class sizes and enrolment numbers exclude support classes in primary and central schools.

13. Higher School Certificate (HSC)

The HSC is the highest educational award in secondary education in NSW. It is awarded to students who have satisfactorily completed Years 11 and 12 at secondary school. To be eligible, students must meet HSC course requirements and sit for the statewide HSC examinations.

14. Colleges

The secondary schools in some areas have been transformed into colleges in order to provide broader opportunities and better facilities for students. A college is the amalgamation of all the secondary schools within a specific area. Each former secondary school has become a campus of their college. A senior college campus is generally for students in Years 11 and 12 but in some cases, may include Year 10 students. The colleges have formed cooperative ventures with TAFE Institutes and universities. They offer a wide range of options from specialist senior HSC courses to school re-entry courses

15. Family Occupation and Education Index

The Family Occupation and Education Index (FOEI) is a school-level index of educational disadvantage related to socioeconomic background. It has been selected as the basis of the equity loading for socio economic background in the department's Resource Allocation Model.

FOEI is constructed from parental education and occupation information collected from student enrolment forms and recorded in the Enrolment Registration Number system. FOEI uses a statistical regression model to produce a weighted combination of school-level parental education and occupation variables based on the extent to which each variable uniquely predicts average school performance. Further information on the methodology used to construct FOEI can be found in relevant publications released at education.nsw.gov.au/cese.

Students in FOEI quarter 1 group are the top 25% of students in NSW government schools who have the highest level of educational disadvantage related to socio-economic background.

16. Attendance

Government school systems in Australia measure attendance rates throughout Semester 1 (Terms 1 and 2). This is the time period specified for data collection in National Education Agreements between the Commonwealth and state and territory governments. The attendance rate is defined as the number of actual full time equivalent 'student days attended' over the collection period as a percentage of the total number of possible student days attended over the collection period (Measurement Framework for Schooling in Australia KPM 7(b)).

17. Statistical area 4 groupings

Previous publications of the Statistical Bulletin compared enrolments in DEC regions. From 2014 these geographies have been discontinued and replaced with a geographical structure based on the new ABS Australian Statistical Geography Standard (ASGS). Groups of ASGS Statistical Area 4 (SA4) boundaries in NSW have been combined into 11 groups for reporting and publication of department data. MCEECDYA refers to the Ministerial Council for Education, Early Childhood Development and Youth Affairs.

Name of SA4 groupings	SA4 Name
Sydney-North	Sydney -North Sydney and Hornsby Sydney -Northern Beaches Sydney -Ryde
Sydney-Inner	Sydney -City and Inner South Sydney -Eastern Suburbs Sydney -Inner West
Sydney-South	Sydney -Inner South West Sydney -Sutherland
Sydney-South West	Sydney -Outer South West Sydney -South West
Sydney-West	Sydney -Blacktown Sydney -Parramatta
Sydney-North West	Sydney -Baulkham Hills and Hawkesbury Sydney -Outer West and Blue Mountains
North East NSW	Coffs Harbour -Grafton Mid North Coast Richmond -Tweed
North West NSW	Hunter Valley excluding Newcastle Far West and Orana New England and North West
South West NSW	Central West Murray Riverina
South East NSW	Capital Region Illawarra Southern Highlands and Shoalhaven
Central Coast, Newcastle	Central Coast Newcastle and Lake Macquarie

Statistical Area 4 groups



Author: **CESE**

Centre for Education Statistics and Evaluation
GPO Box 33, Sydney NSW 2001, Australia

Visit our website to subscribe to the CESE newsletter

✉ info@cese.nsw.gov.au

🌐 education.nsw.gov.au/cese

🗣️ yammer.com/det.nsw.edu.au

This work is licensed under the [Creative Commons Attribution 4.0 International License](https://creativecommons.org/licenses/by/4.0/)

Please cite this publication as:

Centre for Education Statistics and Evaluation (2023), *Schools and students: 2022 statistical bulletin*, NSW Department of Education, education.nsw.gov.au/cese