

Fact sheet

# Impacts of COVID-19 on recent school leavers' post-school destinations

## 2021 NSW Post-School Destinations and Experiences Survey

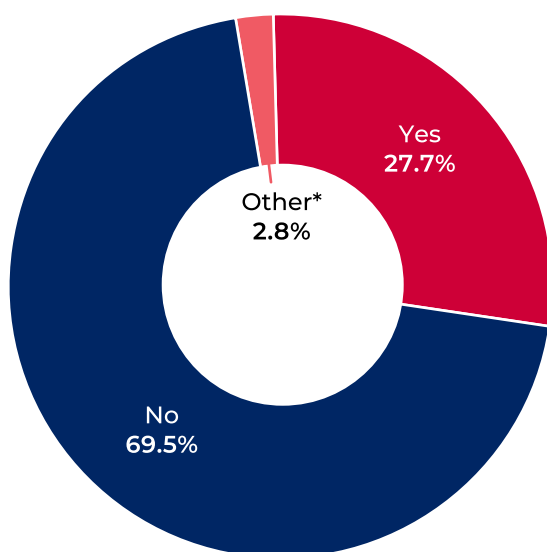
This fact sheet provides a high-level overview of findings from the 2021 NSW Post-School Destinations and Experiences Survey. Of those recent school leavers who answered this survey 1,186 early school leavers and 1,088 Year 12 completers were asked to answer a series of questions about the impacts of COVID-19 on their post-school destinations to inform this fact sheet.

### Did COVID-19 impact recent school leavers' post-school destinations?

Over one-quarter of recent school leavers reported that their post-school destination had changed as a result of COVID-19. More females (32.3%) than males (24.1%) reported that they were now doing something different because of COVID-19. However, COVID-19 did not appear to significantly impact the post-school destination plans of the following types of leavers when comparing the subgroups within each type:

- early school leavers (28.4%) compared with Year 12 completers (26.3%),
- recent school leavers from lower (28.1%) compared with higher (27.3%) parental SES<sup>†</sup> backgrounds, and
- recent school leavers from Greater Sydney (29.0%) compared with the Rest of NSW (26.3%).

Are you now doing something different because of COVID-19?



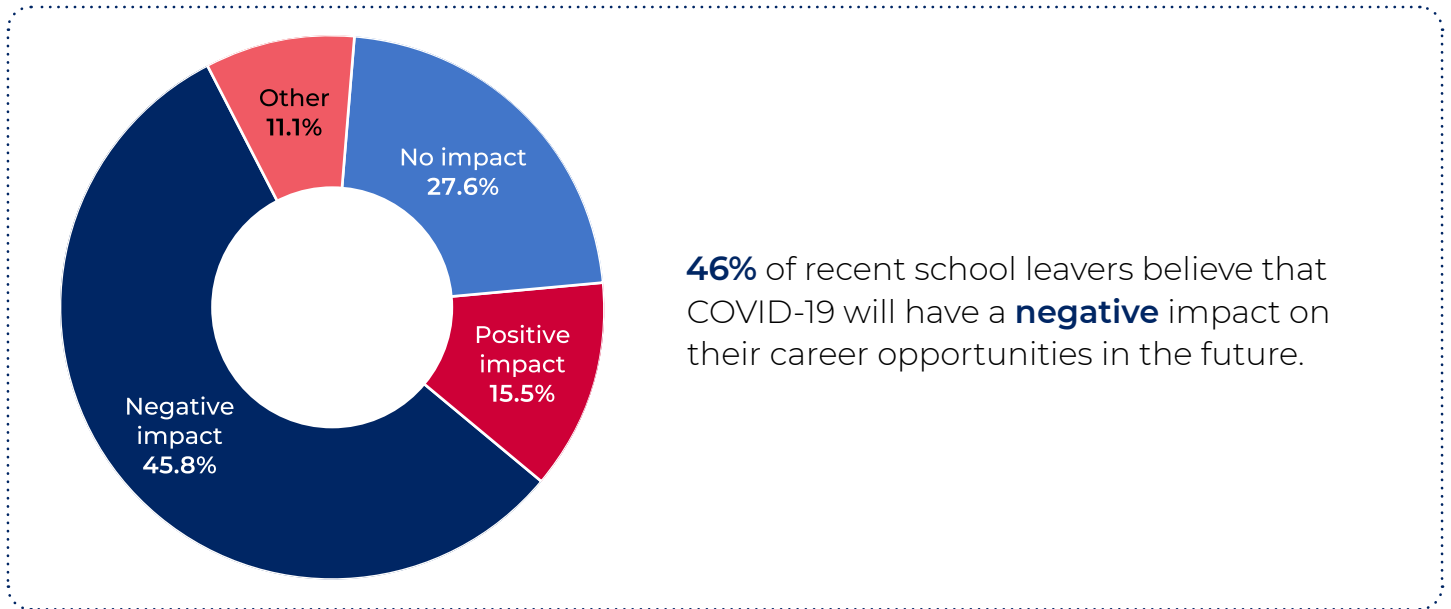
The **top 5** ways in which COVID-19 changed recent school leavers' plans:

1. Inability to find a job (20.9%)
2. Working in a job when they did not expect to be (17.2%)
3. Working fewer hours than normal (14.5%)
4. Other reasons (14.4%)
5. Course, traineeship or apprenticeship changed to remote learning (5.9%)

\* Other includes school leavers who reported that they did not know, provided another answer or refused to answer.

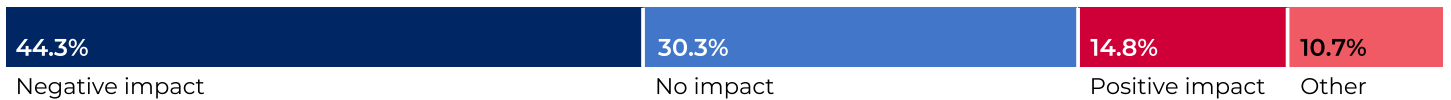
† SES means socioeconomic status.

# Impacts of COVID-19 on recent school leavers' future career opportunities



**Early school leavers** were more likely than Year 12 completers to believe that COVID-19 would have **no impact**.

## Early school leavers

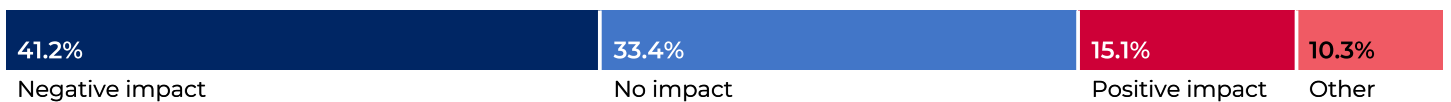


## Year 12 completers



**Males** were more likely to believe that COVID-19 would have **no impact**. **Females** were more likely to believe that COVID-19 would have a **negative impact**.

## Males

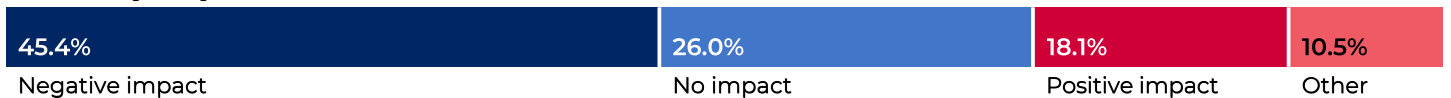


## Females

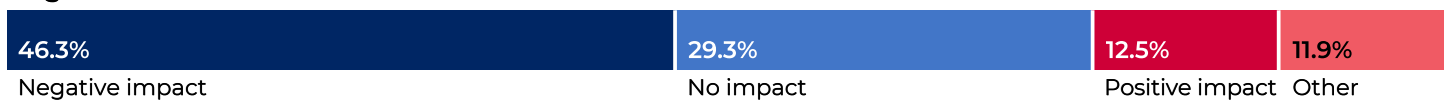


Recent school leavers living in **Greater Sydney** were more likely to believe that COVID-19 would have a **positive impact** than those living in Regional NSW.

## Greater Sydney



## Regional NSW



Centre for Education Statistics and Evaluation GPO Box 33, Sydney NSW 2001, Australia

☎ 02 7814 1527 ✉ [info@cese.nsw.gov.au](mailto:info@cese.nsw.gov.au) 🌐 [education.nsw.gov.au/cese](http://education.nsw.gov.au/cese) 🌐 [yammer.com/det.nsw.edu.au](http://yammer.com/det.nsw.edu.au)

This work is licensed under the [Creative Commons Attribution 4.0 International License](https://creativecommons.org/licenses/by/4.0/)

