

What works best



Practical strategies for **embedding high expectations** in teaching and learning

- Consistently challenge all students to learn new things.
- Establish clear and consistent expectations for learning and behaviour.
- Guide and support students towards meeting expectations.
- Engage with parents and carers to encourage them to hold high expectations of their children.

What works best

Practical strategies for **using data in practice** in teaching and learning

- Regularly dedicate time to using data effectively.
- Collect meaningful data.
- Analyse the data to monitor student learning and progress.
- Make teaching decisions based on data analysis goals.



What works best



Practical strategies for **supporting student wellbeing**

- Select and develop strategies to proactively teach healthy coping mechanisms, resilience and self-regulation.
- Initiate strategies to build a positive learning environment characterised by supportive relationships and regular contact with each student.
- Target support for different phases of student development and for students who may be at risk.
- Use collaborative strategies and share with staff, the school community and other agencies as required, to support the wellbeing of students.

What works best



Practical strategies for **effective teacher collaboration**

- Seek professional learning opportunities to share and gain expertise in evidence-based teaching practices.
- Regularly participate in structured lesson observations that focus on how different teaching approaches impact on student learning.
- Regularly dedicate time throughout the school year for working with colleagues to plan, develop and refine teaching and learning programs.
- Work in partnership with colleagues to achieve shared collaboration goals.

What works best



Practical strategies for **embedding explicit teaching** in the classroom

- Prepare for explicit teaching by planning lesson scope, assessing data, reviewing prior learning and balancing teacher-directed, teacher-guided and student-directed learning.
- Explain, model and guide learning.
- Monitor student progress and check for understanding.

What works best



Practical strategies for **embedding effective feedback** in teaching and learning

- Reflect and communicate about the learning task with students.
- Provide students with detailed and specific feedback about what they need to do to achieve growth as a learner.
- Encourage students to self-assess, reflect and monitor their work.
- Ensure that students act on feedback that they receive.

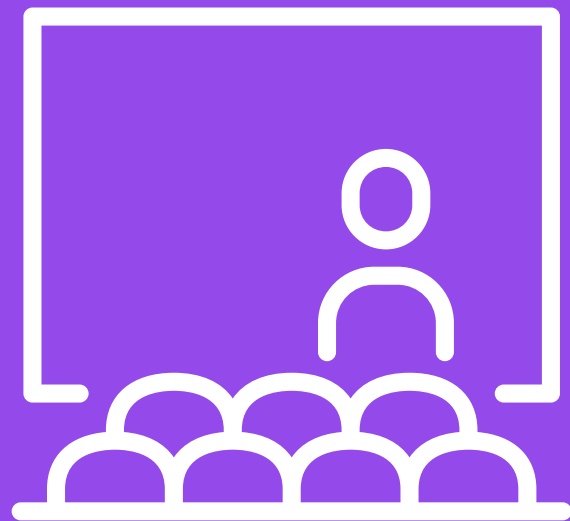
What works best



Practical strategies for **using assessment** to improve student learning

- Make student assessment a part of everyday practice.
- Use assessment to provide students with learning opportunities.
- Design and deliver high-quality formal assessment tasks.
- Carefully structure group assessment activities to ensure that students are supported, challenged and able to work together successfully.

What works best



Practical strategies to **support teachers in managing** their classrooms effectively

- Develop high-quality student-teacher relationships.
- Provide structure, predictability, and opportunities for active student participation in the classroom.
- Actively supervise students to keep them on task.
- Respond to disengagement and disruptive behaviours and support students to re-engage in learning.