

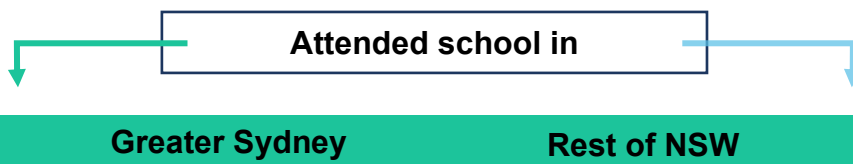
2019 NSW Post-School Destinations and Experiences Survey



Regional differences in apprenticeships, traineeships, occupations and areas of study

The 2019 NSW Post-School Destinations and Experiences Survey collects information about students' main destination¹ and school experience in the year after completing Year 12 or leaving school early. We spoke to 18,777 Year 12 completers and 6,135 early school leavers.

This fact sheet provides a brief overview of regional differences in apprenticeships, traineeships, occupations and areas of study being undertaken by NSW School Leavers in 2019. Region (Greater Sydney, Rest of NSW) is based on the location of the school attended by the student. Greater Sydney and Rest of NSW are based on intuitive groupings of the 28 Statistical Area Levels (SA4) for NSW defined within the ABS Australian Statistical Geography Standard (ASGS).



The most common apprenticeships* were:

Year 12 completers

Electricians
25.2%



Electricians
21.9%

Bricklayers, and carpenters and joiners
20.7%



Fabrication engineering trades workers
15.1%

Plumbers
13.1%



Bricklayers, and carpenters and joiners
14.4%

Early school leavers

Bricklayers, and carpenters and joiners
23.0%



Bricklayers, and carpenters and joiners
20.7%

Plumbers
17.8%



Automotive electricians and mechanics
15.7%

Electricians
15.8%



Electricians
12.3%

* Of those undertaking an apprenticeship

1. A total of ten post-school destinations were defined from responses to a number of items relating to participation in further education and current employment. This classification system is a hierarchical classification system, which prioritises education related post-school destinations over participation in employment. As such, it represents a young person's main destination since leaving school.





Greater Sydney

Rest of NSW

The most common traineeships* were:

Year 12 completers

Child carers
28.2%



Child carers
25.0%

General clerks
10.4%



General clerks
16.6%

Sales assistants and salespersons
8.7%



Sales assistants and salespersons
12.2%

Early school leavers

Child carers
37.9%



Sales assistants and salespersons
20.6%

Sales assistants and salespersons
13.1%



Child Carers
17.2%

General clerks
8.5%



Hospitality workers
7.5%

* Of those undertaking a traineeship

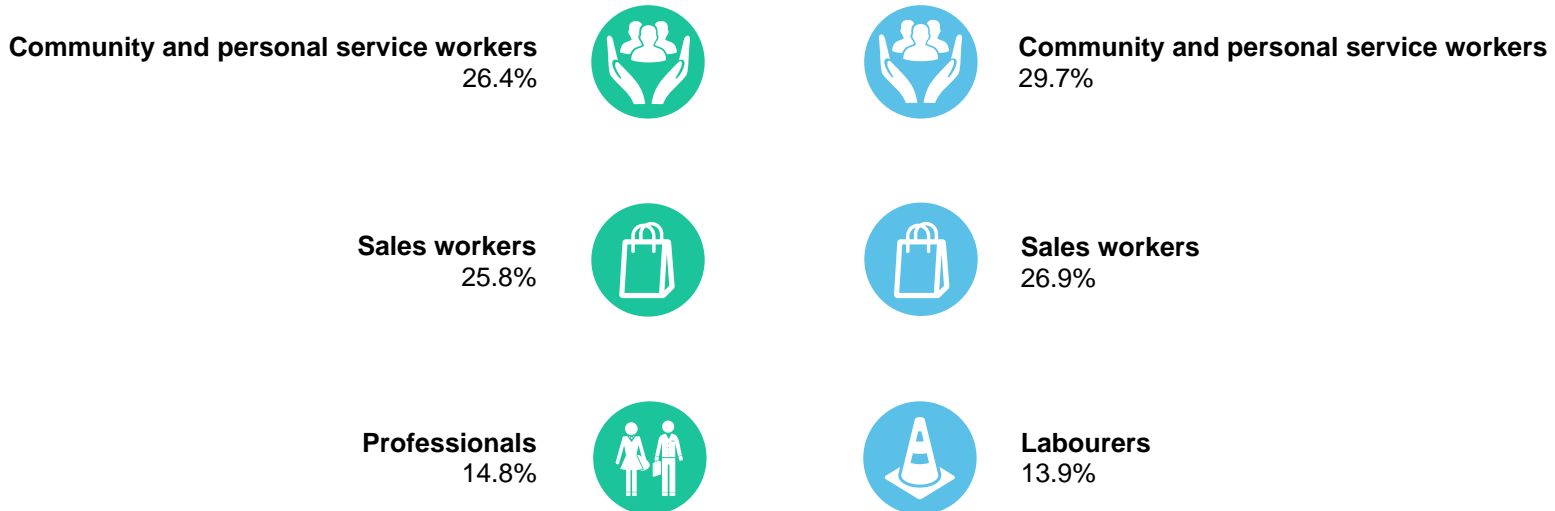


Greater Sydney

Rest of NSW

The most common occupations* were:

Year 12 completers



Early school leavers



* Of those who are employed full-time or part-time

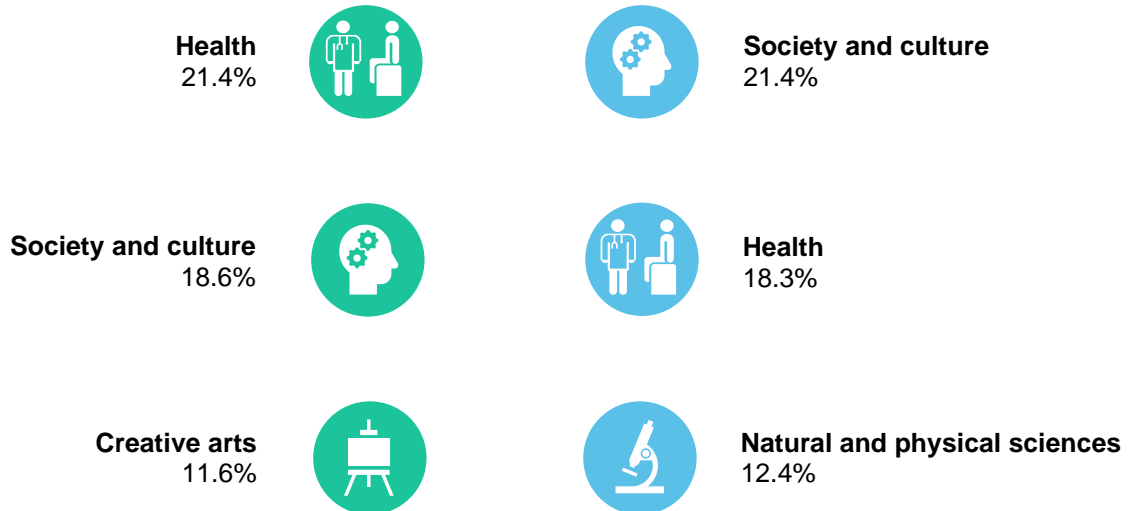


Greater Sydney

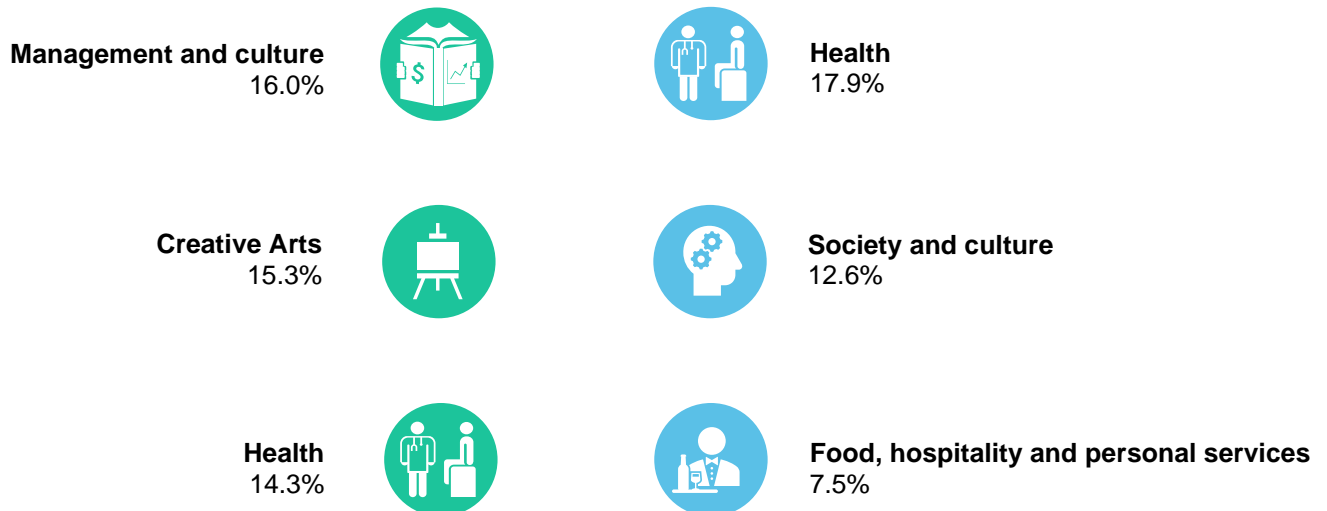
Rest of NSW

The most common areas of study* were:

Year 12 completers



Early school leavers



*Of those undertaking further education