

# NSW Secondary Students' Post-School Destinations and Expectations

## 2018 Early School Leavers

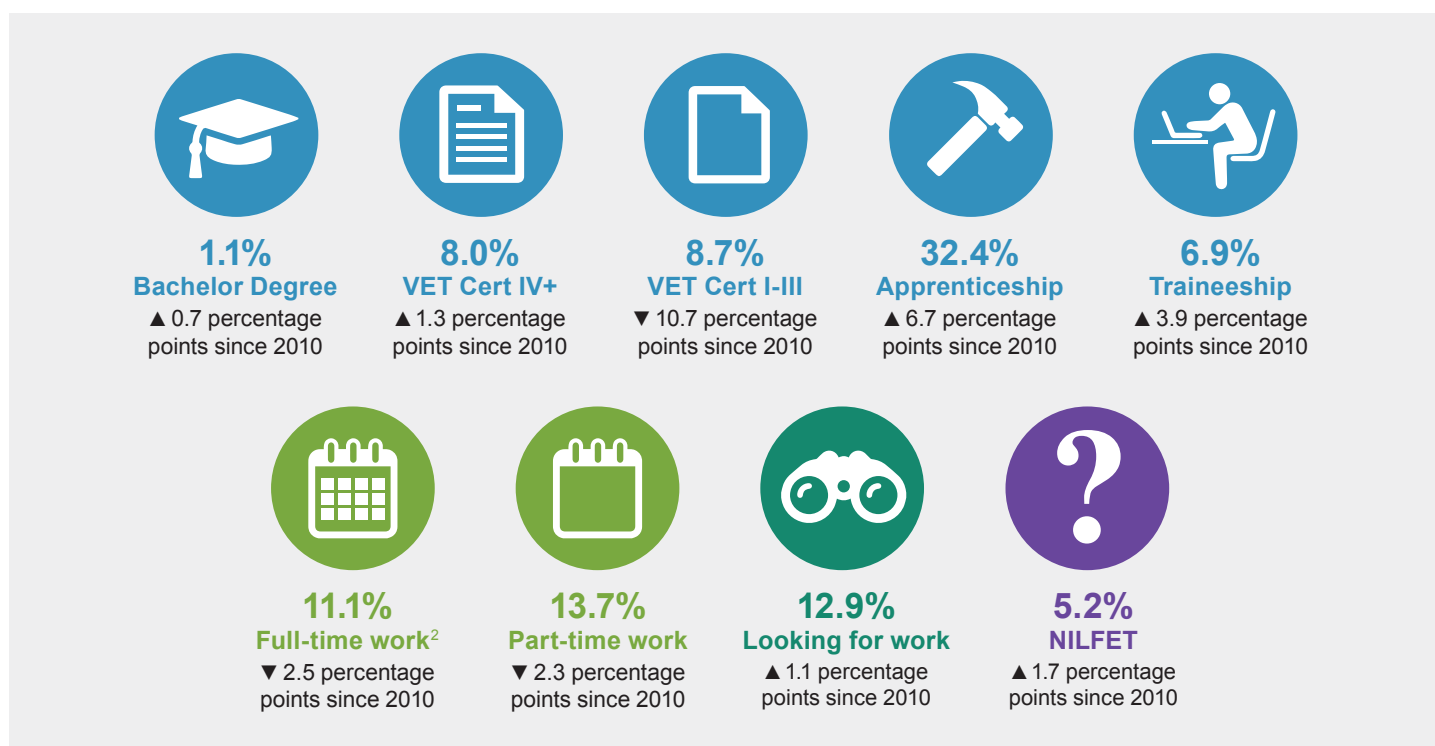
This fact sheet provides a brief overview of findings from the early school leaver cohort of the NSW Secondary Students' Post-School Destinations and Expectations survey. A total of 4,470 students who left school before completing Year 12 in 2017 took part in the survey in 2018.

### Main destination

- Over half (57.1%) of early school leavers are in some form of education or training in 2018<sup>1</sup>.
- One-quarter (24.8%) are employed.
- More than one-in-ten (12.9%) are looking for work.
- One-in-twenty (5.2%) are not in the labour force, education or training (NILFET).



- The most common form of education and training is an apprenticeship, with around a third (32.4%) of early school leavers training at this level; up 6.7 percentage points since 2010.
- Less than ten per cent of early school leavers are pursuing each other type of education and training.
- Participation in VET Certificate I-III has decreased 10.7 percentage points since 2010.



<sup>1</sup> Main post-school destination variable prioritises education related outcomes over participation in employment. For more information on how main destinations are derived or for the study background and methodology, please see the 2018 Technical Report  
<sup>2</sup> Full-time work is 35+ hours per week, Part-time work is <35 hours per week.

# Reasons for leaving school



**38.6%**

**Disillusioned with school**

▲ 1.2 percentage points since 2014

**Top three destinations**

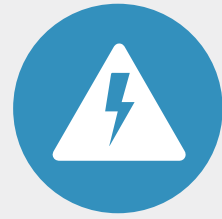


**25.5%**

**Employment or career**

▲ 0.7 percentage points since 2014

**Top three destinations**



**10.8%**

**Academic or behavioural difficulties**

▼ 3.7 percentage points since 2014

**Top three destinations**



**10.4%**

**External factors or pressures**

▲ 0.9 percentage points since 2014

**Top three destinations**



**6.8%**

**Other educational opportunities**

▲ 1.5 percentage points since 2014

**Top three destinations**



**4.6%**

**Bullying**

▲ 0.3 percentage points since 2014

**Top three destinations**



**3.2%**

**Other reasons**

▼ 1.0 percentage points since 2014

**Top three destinations**

