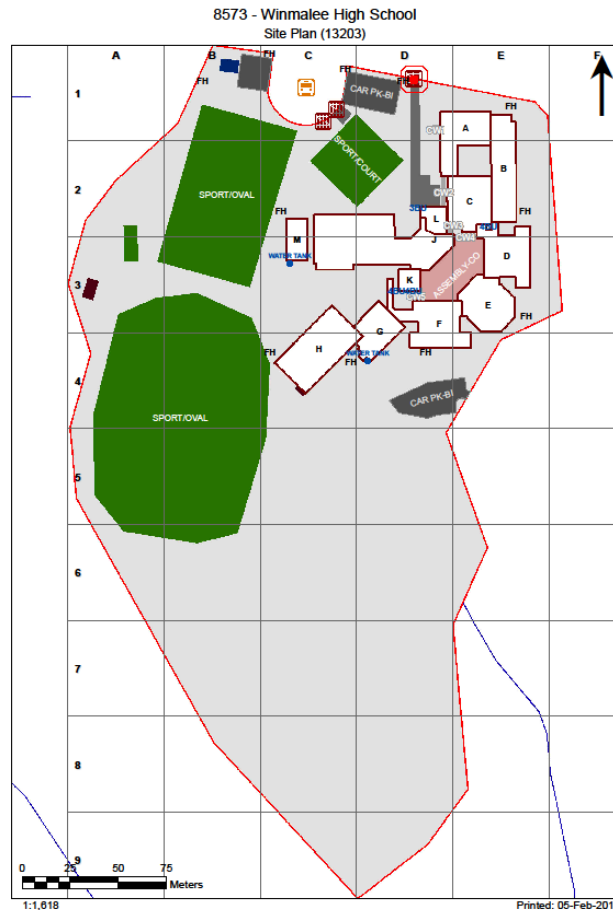


# Asbestos Register

(Hazardous Materials and Risk Assessment)

**School :** Winmalee High School (8573)  
**Region :** Western Sydney  
**State Electorate :** Blue Mountains  
**Local Government Area :** Blue Mountains

**Initial Survey :** Noel Arnold & Associates : 22 - May - 2008  
**Reviewed By :** Greencap-NAA : 22 - Jun - 2015



# 2017

Product	Material Description	Extent	Location Reference	Material Condition	Risk Status	Control Priority
	Sample No					Test Result

**B00A - Administration/Science - 1985 - Brick/Block (Brick/Block)****Exterior**

Underfloor Voids - Slab on Ground      Non Accessible Area

- Area inaccessible

Ceiling Voids      No Asbestos Found

**Interior****B00A - R0001 - Interview/Office - Type 1**

No Asbestos

**B00A - R0002 - Interview/Office - Type 1**

No Asbestos

**B00A - R0003 - Principal Office**

No Asbestos

**B00A - R0004 - Cleaning Store - Distributed**

No Asbestos

**B00A - R0005 - Ancillary Staff**

No Asbestos

**B00A - R0006 - Distribution Board Cupboard**

Note: No inspection of live electrical installation.

No Asbestos

**B00A - R0007 - Staff - Toilet**

No Asbestos

**B00A - R0008 - Laboratory L.S.**

No Asbestos

**B00A - R0009 - Preparation**

No Asbestos

**B00A - R0010 - Movement**

No Asbestos

**B00A - R0011 - Chemical Store**

No Asbestos

**B00A - R0012 - Staff Study**

No Asbestos

**B00A - R0013 - Security Store**

No Asbestos

**B00A - R0014 - Duplicating Workroom**

No Asbestos

**B00A - R0015 - Administration - Clerical**

No Asbestos

**B00A - R0016 - Public Entry**

No Asbestos

**B00A - R0017 - Movement**

No Asbestos

**B00A - R0018 - Pupil Entry**

No Asbestos

**B00A - R0019 - Deputy Principal Office**

No Asbestos

**B00A - R0020 - Clinic - Boys**

No Asbestos

**B00A - R0021 - Clinic-Toilets**

No Asbestos

**B00A - R0022 - Clinic-Toilets**

No Asbestos

Product	Material Description	Extent	Location Reference	Material Condition	Risk Status	Control Priority
Sample No					Test Result	
<b>B00A - R0023 - Clinic - Girls</b>						
No Asbestos						
<b>B00A - R0024 - External Movement</b>						
Ceiling Structures/Linings	Flat AC Sheeting		8573/B00A/R0025/Ceiling Structures/Linings/S3			<b>No Asbestos Detected</b>
<b>B00A - R0025 - External Movement</b>						
Ceiling Structures/Linings	Flat AC Sheeting		8573/B00A/R0025/Ceiling Structures/Linings/S3			<b>No Asbestos Detected</b>

2017

Product	Material Description	Extent	Location Reference	Material Condition	Risk Status	Control Priority
Sample No					Test Result	

**B00B - Science Learning - 1985 - Brick/Block (Brick/Block)**

**Exterior**

Ceiling Voids	No Asbestos Found
Underfloor Voids - Slab on Ground	Non Accessible Area - Area inaccessible

**Interior**

**B00B - R0001 - Growing/Breeding**

No Asbestos

**B00B - R0002 - Laboratory L.S.**

No Asbestos

**B00B - R0003 - Preparation**

No Asbestos

**B00B - R0004 - Laboratory L.S.**

No Asbestos

**B00B - R0005 - Movement**

No Asbestos

**B00B - R0006 - Distribution Board Cupboard**

Note: No inspection of live electrical installation.

No Asbestos

**B00B - R0007 - Toilets-Disabled**

No Asbestos

**B00B - R0008 - Apparatus Store**

No Asbestos

**B00B - R0009 - Staff - Toilet**

No Asbestos

**B00B - R0010 - Movement**

No Asbestos

**B00B - R0011 - Laboratory L.S.**

No Asbestos

**B00B - R0012 - Preparation**

No Asbestos

**B00B - R0013 - Laboratory L.S.**

No Asbestos

**B00B - R0014 - Movement**

No Asbestos

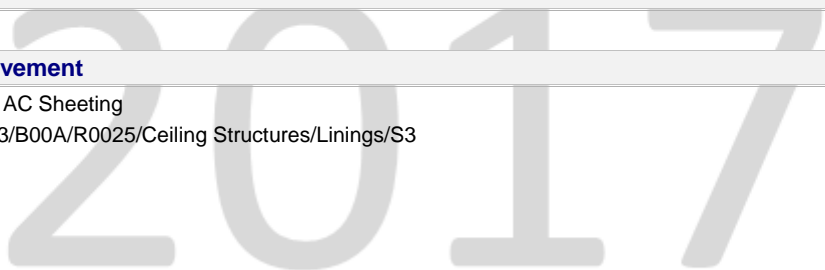
**B00B - R0015 - Movement**

No Asbestos

**B00B - R0016 - External Movement**

Ceiling Structures/Linings Flat AC Sheeting  
8573/B00A/R0025/Ceiling Structures/Linings/S3

**No Asbestos Detected**



Product	Material Description	Extent	Location Reference	Material Condition	Risk Status	Control Priority
Sample No					Test Result	

**B00C - Technological & Applied Studies - 1985 - Brick/Block (Brick/Block)**

**Exterior**

Underfloor Voids - Slab on Ground	Non Accessible Area - Area inaccessible
Ceiling Voids	No Asbestos Found

**Interior**

**B00C - R0001 - Design L.S.**

No Asbestos

**B00C - R0002 - Food Technology L.S.**

No Asbestos

**B00C - R0003 - Food/Research Space**

No Asbestos

**B00C - R0004 - Preparation**

No Asbestos

**B00C - R0005 - Food Technology L.S.**

No Asbestos

**B00C - R0006 - External Movement**

Ceiling Structures/Linings	Flat AC Sheeting 8573/B00C/R0006/Ceiling Structures/Linings/S2	<b>No Asbestos Detected</b>
----------------------------	-------------------------------------------------------------------	-----------------------------

**B00C - R0007 - Design L.S.**

No Asbestos

**B00C - R0008 - Laundry**

No Asbestos

**B00C - R0009 - Distribution Board Cupboard**

Note: No inspection of live electrical installation.

No Asbestos

**B00C - R0010 - Cleaning Store - Distributed**

No Asbestos

**B00C - R0011 - Staff Study**

No Asbestos

**B00C - R0012 - Movement**

No Asbestos

**B00C - R0013 - Entry**

No Asbestos

**B00C - R0014 - Entry**

No Asbestos

**B00C - R0015 - Food Technology L.S.**

No Asbestos

**B00C - R9001 - Toilets-Boys**

Partition Walls (Cubicles)	Compressed AC Sheet 8573/B00J/R0013/Partition Walls (Cubicles)/S5	<b>No Asbestos Detected</b>
----------------------------	----------------------------------------------------------------------	-----------------------------

**B00C - R9002 - Toilets-Girls**

Partition Walls (Cubicles)	Compressed AC Sheet 8573/B00J/R0013/Partition Walls (Cubicles)/S5	<b>No Asbestos Detected</b>
----------------------------	----------------------------------------------------------------------	-----------------------------

Product	Material Description	Extent	Location Reference	Material Condition	Risk Status	Control Priority
	Sample No					Test Result

**B00D - General Learning - 1985 - Brick/Block (Brick/Block)****Exterior**

Ceiling Voids	No Asbestos Found
Underfloor Voids - Slab on Ground	Non Accessible Area - Area inaccessible

**Interior****B00D - R0001 - Staff Study**

No Asbestos

**B00D - R0002 - Teachers Aides**

No Asbestos

**B00D - R0003 - Study Space**

No Asbestos

**B00D - R0004 - General Learning Space**

No Asbestos

**B00D - R0005 - General Learning Space**

No Asbestos

**B00D - R0006 - Distribution Board Cupboard**

Note: No inspection of live electrical installation.

No Asbestos

**B00D - R0007 - General Storeroom**

No Asbestos

**B00D - R0008 - General Learning Space**

No Asbestos

**B00D - R0009 - General Learning Space**

No Asbestos

**B00D - R0010 - Darkroom Space**

No Asbestos

**B00D - R0011 - Cleaning Store - Distributed**

No Asbestos

**B00D - R0012 - Interview/Office - Type 1**

No Asbestos

**B00D - R0013 - External Movement**

No Asbestos

**B00D - R0014 - Movement**

No Asbestos

**B00D - R0016 - External Movement**

No Asbestos

**B00D - R0017 - Stairs**

No Asbestos

**B00D - R0018 - Movement**

No Asbestos

**B00D - R0019 - Stairs**

No Asbestos

**B00D - R1001 - General Learning Space**

No Asbestos

**B00D - R1002 - General Learning Space**

No Asbestos

**B00D - R1003 - General Storeroom**

No Asbestos

**B00D - R1004 - Distribution Board Cupboard**

Note: No inspection of live electrical installation.

No Asbestos

Product	Material Description	Extent	Location Reference	Material Condition	Risk Status	Control Priority
Sample No					Test Result	
<b>B00D - R1005 - General Learning Space</b>						
No Asbestos						
<b>B00D - R1006 - Computer Learning Space</b>						
No Asbestos						
<b>B00D - R1007 - Study Space</b>						
No Asbestos						
<b>B00D - R1010 - Staff Study</b>						
No Asbestos						
<b>B00D - R1011 - General Learning Space</b>						
No Asbestos						
<b>B00D - R1012 - General Learning Space</b>						
No Asbestos						
<b>B00D - R1013 - General Learning Space</b>						
No Asbestos						
<b>B00D - R1014 - Study Space</b>						
No Asbestos						
<b>B00D - R1015 - Movement</b>						
No Asbestos						
<b>B00D - R1016 - Cleaning Store - Distributed</b>						
No Asbestos						
<b>B00D - R1017 - Stairs</b>						
No Asbestos						
<b>B00D - R1018 - Stairs</b>						
No Asbestos						
<b>B00D - R1019 - Toilet - Lobby</b>						
No Asbestos						
<b>B00D - R1020 - Staff - Toilet</b>						
No Asbestos						
<b>B00D - R1021 - Staff - Toilet</b>						
No Asbestos						
<b>B00D - R1022 - Toilet - Lobby</b>						
No Asbestos						

2017

Product	Material Description	Extent	Location Reference	Material Condition	Risk Status	Control Priority
	Sample No					Test Result

**B00E - Library - 1985 - Brick/Block (Brick/Block)****Exterior**

Ceiling Voids	No Asbestos Found
Underfloor Voids	No Asbestos Found

**Interior****B00E - R0001 - Seminar**

No Asbestos

**B00E - R0002 - Seminar**

No Asbestos

**B00E - R0003 - Seminar**

No Asbestos

**B00E - R0004 - Librarian**

No Asbestos

**B00E - R0005 - Audio Visual Workroom**

No Asbestos

**B00E - R0006 - Workroom**

No Asbestos

**B00E - R0007 - Distribution Board Cupboard**

Note: No inspection of live electrical installation.

No Asbestos

**B00E - R0008 - Main Area**

No Asbestos

**B00E - R0009 - Movement**

No Asbestos

**B00E - R0010 - Movement**

No Asbestos

**B00E - R0011 - Covered Area**

No Asbestos

**B00E - R0012 - Stairs**

No Asbestos

**B00E - R0013 - Stairs**

No Asbestos

**B00E - R1001 - Movement**

No Asbestos

**B00E - R1002 - Commonroom**

No Asbestos

**B00E - R1003 - Computer Learning Space**

No Asbestos

**B00E - R1004 - Computer Resource**

No Asbestos

**B00E - R1005 - Study Space**

No Asbestos

**B00E - R1006 - Movement**

No Asbestos

**B00E - R1007 - Stairs**

No Asbestos

**B00E - R1008 - Stairs**

No Asbestos



Product	Material Description	Extent	Location Reference	Material Condition	Risk Status	Control Priority
Sample No					Test Result	

**B00F - General Learning - 1985 - Brick/Block (Brick/Block)**

**Exterior**

Ceiling Voids	No Asbestos Found
Underfloor Voids - Slab on Ground	Non Accessible Area - Area inaccessible

**Interior**

**B00F - R0001 - Staff Study**

No Asbestos

**B00F - R0002 - General Learning Space**

No Asbestos

**B00F - R0003 - General Learning Space**

No Asbestos

**B00F - R0004 - General Learning Space**

No Asbestos

**B00F - R0005 - General Storeroom**

No Asbestos

**B00F - R0006 - Distribution Board Cupboard**

Note: No inspection of live electrical installation.

No Asbestos

**B00F - R0007 - General Learning Space**

No Asbestos

**B00F - R0008 - General Learning Space**

No Asbestos

**B00F - R0011 - Movement**

No Asbestos

**B00F - R0012 - Staff Study**

No Asbestos

**B00F - R0013 - Movement**

No Asbestos

**B00F - R0014 - Movement**

No Asbestos

**B00F - R0016 - General Learning Space**

No Asbestos

**B00F - R0017 - Stairs**

No Asbestos

**B00F - R0018 - Stairs**

No Asbestos

**B00F - R0019 - Covered Area**

No Asbestos

**B00F - R0020 - External Movement**

No Asbestos

**B00F - R1001 - General Learning Space**

No Asbestos

**B00F - R1002 - General Learning Space**

No Asbestos

**B00F - R1003 - General Storeroom**

No Asbestos

**B00F - R1004 - Distribution Board Cupboard**

Note: No inspection of live electrical installation.

No Asbestos

**B00F - R1005 - General Learning Space**

No Asbestos

Product	Material Description	Extent	Location Reference	Material Condition	Risk Status	Control Priority
Sample No					Test Result	
<b>B00F - R1006 - General Learning Space</b>						
No Asbestos						
<b>B00F - R1007 - Study Space</b>						
No Asbestos						
<b>B00F - R1008 - General Learning Space</b>						
No Asbestos						
<b>B00F - R1009 - General Learning Space</b>						
No Asbestos						
<b>B00F - R1010 - General Learning Space</b>						
No Asbestos						
<b>B00F - R1011 - Staff Study</b>						
No Asbestos						
<b>B00F - R1012 - Careers Advisers Office</b>						
No Asbestos						
<b>B00F - R1013 - Study Space</b>						
No Asbestos						
<b>B00F - R1014 - Cleaning Store - Distributed</b>						
No Asbestos						
<b>B00F - R1016 - Stairs</b>						
No Asbestos						
<b>B00F - R1017 - Stairs</b>						
No Asbestos						
<b>B00F - R1018 - Movement</b>						
No Asbestos						
<b>B00F - R1019 - Movement</b>						
No Asbestos						

2017

Product	Material Description	Extent	Location Reference	Material Condition	Risk Status	Control Priority
Sample No					Test Result	

**B00G - Art/Music - 1985 - Brick/Block (Brick/Block)**

**Exterior**

Ceiling Voids	No Asbestos Found
Underfloor Voids - Slab on Ground	Non Accessible Area - Area inaccessible

**Interior**

**B00G - R0001 - Staff Study**

No Asbestos

**B00G - R0002 - General Storeroom**

No Asbestos

**B00G - R0003 - Art Learning Space**

No Asbestos

**B00G - R0004 - Workshop**

No Asbestos

**B00G - R0005 - Art Learning Space**

No Asbestos

**B00G - R0007 - Art Learning Space**

No Asbestos

**B00G - R0009 - Kiln Space**

No Asbestos

**B00G - R0010 - Stairs**

No Asbestos

**B00G - R0011 - Movement**

No Asbestos

**B00G - R0012 - General Learning Space**

No Asbestos

**B00G - R1001 - Music Learning Space**

No Asbestos

**B00G - R1002 - Practice/Seminar**

No Asbestos

**B00G - R1003 - Staff - Toilet**

No Asbestos

**B00G - R1004 - Practice/Seminar**

No Asbestos

**B00G - R1005 - Music Learning Space**

No Asbestos

**B00G - R1006 - Movement**

No Asbestos

**B00G - R1007 - Music Store**

No Asbestos

**B00G - R1008 - Distribution Board Cupboard**

Note: No inspection of live electrical installation.

No Asbestos

**B00G - R1009 - Cleaning Store - Distributed**

No Asbestos

**B00G - R1010 - Staff Study**

No Asbestos

**B00G - R1011 - Stairs**

No Asbestos

**B00G - R1012 - General Learning Space**

No Asbestos

Product	Material Description	Extent	Location Reference	Material Condition	Risk Status	Control Priority
Sample No					Test Result	

B00G - R1013 - Store

No Asbestos

2017

Product	Material Description	Extent	Location Reference	Material Condition	Risk Status	Control Priority
Sample No					Test Result	

**B00H - Technological & Applied Studies - 1985 - Brick/Block (Brick/Block)**

**Exterior**

Ceiling Voids	No Asbestos Found					
Underfloor Voids	Debris					
	8573/B00H/Underfloor Voids/S7					<b>No Asbestos Detected</b>

**Interior**

**B00H - M0002 - Stairs**

No Asbestos

**B00H - M0003 - General Storeroom**

No Asbestos

**B00H - R0001 - Distribution Board Cupboard**

Note: No inspection of live electrical installation.

No Asbestos

**B00H - R0002 - Bulk Store**

No Asbestos

**B00H - R0003 - Materials Technology L.S.**

No Asbestos

**B00H - R0004 - Wood Technology Bay**

No Asbestos

**B00H - R0005 - Dust Extraction Space**

No Asbestos

**B00H - R0006 - Materials Technology L.S.**

No Asbestos

**B00H - R0007 - Materials Technology L.S.**

No Asbestos

**B00H - R0008 - Metal Technology Bay**

No Asbestos

**B00H - R0009 - Materials Technology L.S.**

No Asbestos

**B00H - R0010 - Workshop Area**

No Asbestos

**B00H - R0012 - Materials Store**

No Asbestos

**B00H - R0013 - Materials Store**

No Asbestos

**B00H - R0014 - Materials Store**

No Asbestos

**B00H - R0015 - Interview/Office - Type 1**

No Asbestos

**B00H - R0016 - Distribution Board Cupboard**

Note: No inspection of live electrical installation.

No Asbestos

**B00H - R0017 - General Storeroom**

No Asbestos

**B00H - R0018 - Toilets-Girls**

Partition Walls (Cubicles)	Compressed AC Sheet					
	8573/B00J/R0013/Partition Walls (Cubicles)/S5					<b>No Asbestos Detected</b>

**B00H - R0019 - General Storeroom**

No Asbestos

**B00H - R0020 - Toilets-Boys**

Partition Walls (Cubicles)	Compressed AC Sheet					
	8573/B00J/R0013/Partition Walls (Cubicles)/S5					<b>No Asbestos Detected</b>

**B00H - R0021 - Cleaning Store - Distributed**

Product	Material Description	Extent	Location Reference	Material Condition	Risk Status	Control Priority
	<b>Sample No</b>					<b>Test Result</b>

No Asbestos

**B00H - R0022 - Movement**

No Asbestos

**B00H - R0023 - L.P.G. Store**

No Asbestos

**B00H - R0024 - Movement**

No Asbestos

**B00H - R0025 - External Movement**

No Asbestos

**B00H - R0026 - Movement**

No Asbestos

**B00H - R0027 - Stairs**

No Asbestos

**B00H - R0028 - Stairs**

No Asbestos

**B00H - R0029 - Welding/Hot Metals Area**

No Asbestos

**B00H - R0030 - Welding/Hot Metals Area**

No Asbestos

**B00H - R1001 - Design L.S.**

No Asbestos

**B00H - R1002 - Resource/Project Store**

No Asbestos

**B00H - R1003 - Design L.S.**

No Asbestos

**B00H - R1004 - Staff Study**

No Asbestos

**B00H - R1005 - Movement**

No Asbestos

**B00H - R1006 - Stairs**

No Asbestos

2017

Product	Material Description	Extent	Location Reference	Material Condition	Risk Status	Control Priority
Sample No					Test Result	

**B00J - Multi Purpose Facilities - 1985 - Brick/Block (Brick/Block)**

**Exterior**

Ceiling Voids - Raked Ceiling	Non Accessible Area - Area inaccessible
Underfloor Voids - Slab on Ground	Non Accessible Area - Area inaccessible

**Interior**

**B00J - R0001 - Shower/Change**

No Asbestos

**B00J - R0002 - Shower/Change**

Partition Walls (Cubicles)	Compressed AC Sheet 8573/B00J/R0013/Partition Walls (Cubicles)/S5	<b>No Asbestos Detected</b>
----------------------------	----------------------------------------------------------------------	-----------------------------

**B00J - R0003 - Shower/Change**

No Asbestos

**B00J - R0004 - General Assistants**

No Asbestos

**B00J - R0005 - Staff Change**

Partition Walls (Cubicles)	Compressed AC Sheet 8573/B00J/R0013/Partition Walls (Cubicles)/S5	<b>No Asbestos Detected</b>
----------------------------	----------------------------------------------------------------------	-----------------------------

**B00J - R0006 - Staff Study**

No Asbestos

**B00J - R0007 - Multi-Purpose Space**

No Asbestos

**B00J - R0008 - Movement**

No Asbestos

**B00J - R0009 - Movement**

No Asbestos

**B00J - R0010 - Stage**

No Asbestos

**B00J - R0011 - Commonroom**

No Asbestos

**B00J - R0012 - Chair Store**

No Asbestos

**B00J - R0013 - Toilets-Boys**

Partition Walls (Cubicles)	Compressed AC Sheet 8573/B00J/R0013/Partition Walls (Cubicles)/S5	<b>No Asbestos Detected</b>
----------------------------	----------------------------------------------------------------------	-----------------------------

**B00J - R0014 - Toilets-Girls**

Partition Walls (Cubicles)	Compressed AC Sheet 8573/B00J/R0013/Partition Walls (Cubicles)/S5	<b>No Asbestos Detected</b>
----------------------------	----------------------------------------------------------------------	-----------------------------

**B00J - R0015 - Movement**

No Asbestos

**B00J - R0016 - Movement**

No Asbestos

**B00J - R0017 - Shower/Change**

No Asbestos

**B00J - R0018 - Shower/Change**

Partition Walls (Cubicles)	Compressed AC Sheet 8573/B00J/R0013/Partition Walls (Cubicles)/S5	<b>No Asbestos Detected</b>
----------------------------	----------------------------------------------------------------------	-----------------------------

**B00J - R0019 - Shower/Change**

No Asbestos

Product	Material Description	Extent	Location Reference	Material Condition	Risk Status	Control Priority
Sample No					Test Result	
<b>B00J - R0020 - Sport Equipment Store</b>						
No Asbestos						
<b>B00J - R0021 - Toilets-Girls</b>						
Partition Walls (Cubicles)	Compressed AC Sheet		8573/B00J/R0013/Partition Walls (Cubicles)/S5			No Asbestos Detected
<b>B00J - R0022 - Toilets-Boys</b>						
Partition Walls (Cubicles)	Compressed AC Sheet		8573/B00J/R0013/Partition Walls (Cubicles)/S5			No Asbestos Detected
<b>B00J - R0023 - Cleaning Store - Distributed</b>						
No Asbestos						
<b>B00J - R0024 - Toilets-Disabled</b>						
No Asbestos						
<b>B00J - R0025 - External Movement</b>						
Ceiling Structures/Linings	Flat AC Sheeting		8573/B00J/R0025/Ceiling Structures/Linings/S6			No Asbestos Detected
<b>B00J - R0028 - Movement</b>						
Ceiling Structures/Linings	Flat AC Sheeting		8573/B00J/R0025/Ceiling Structures/Linings/S6			No Asbestos Detected
<b>B00J - R0029 - External Movement</b>						
No Asbestos						
<b>B00J - R0030 - General Storeroom</b>						
No Asbestos						
<b>B00J - R0031 - General Storeroom</b>						
No Asbestos						
<b>B00J - R0033 - Plant</b>						
No Asbestos						
<b>B00J - R0034 - Covered Area</b>						
No Asbestos						
<b>B00J - R0035 - Covered Area</b>						
No Asbestos						
<b>B00J - R0036 - Plant</b>						
No Asbestos						
<b>B00J - R9001 - Main Switchroom</b>						
No Asbestos						
<b>B00J - R9002 - Garden Store Room</b>						
No Asbestos						
<b>B00J - R9003 - General Storeroom</b>						
No Asbestos						
<b>B00J - R9004 - Machine Storage</b>						
No Asbestos						
<b>B00J - R9005 - Sport Equipment Store</b>						
No Asbestos						

2017



Product	Material Description	Extent	Location Reference	Material Condition	Risk Status	Control Priority
Sample No					Test Result	

**B00K - Multi Purpose Facilities - 1985 - Brick/Block (Brick/Block)**

**Exterior**

Ceiling Voids - Flat Roof	Non Accessible Area - Area inaccessible
Underfloor Voids - Slab on Ground	Non Accessible Area - Area inaccessible

**Interior**

**B00K - R0001 - Movement**

No Asbestos

**B00K - R0002 - Toilets-Boys**

Partition Walls (Cubicles)	Compressed AC Sheet 8573/B00J/R0013/Partition Walls (Cubicles)/S5	<b>No Asbestos Detected</b>
----------------------------	----------------------------------------------------------------------	-----------------------------

**B00K - R0003 - Toilets-Girls**

Partition Walls (Cubicles)	Compressed AC Sheet 8573/B00J/R0013/Partition Walls (Cubicles)/S5	<b>No Asbestos Detected</b>
----------------------------	----------------------------------------------------------------------	-----------------------------

**B00K - R1002 - General Storeroom**

No Asbestos

**B00K - R1003 - Plant**

No Asbestos

**B00K - R1004 - Tiered Learning Area**

No Asbestos

**B00K - R1005 - Movement**

No Asbestos

**B00K - R1006 - Movement**

No Asbestos

2017

Product	Material Description	Extent	Location Reference	Material Condition	Risk Status	Control Priority
Sample No					Test Result	

**B00L - Pupil Facilities - 1985 - Brick/Block (Brick/Block)**

**Exterior**

Ceiling Voids - Raked Ceiling	Non Accessible Area - Area inaccessible
Underfloor Voids - Slab on Ground	Non Accessible Area - Area inaccessible

**Interior**

**B00L - R0001 - Cleaning Supplies Store**

No Asbestos

**B00L - R0002 - Cleaning Supplies Store**

No Asbestos

**B00L - R0003 - General Storeroom**

No Asbestos

**B00L - R0004 - Cleaning Supplies Store**

No Asbestos

**B00L - R0005 - Distribution Board Cupboard**

Note: No inspection of live electrical installation.

No Asbestos

**B00L - R0006 - Student Canteen**

No Asbestos

**B00L - R0007 - Movement**

Ceiling Structures/Linings	Flat AC Sheeting 8573/B00L/R0007/Ceiling Structures/Linings/S4
----------------------------	-------------------------------------------------------------------

**No Asbestos Detected**

2017

Product	Material Description	Extent	Location Reference	Material Condition	Risk Status	Control Priority
Sample No					Test Result	

**B00M - Art - 2009 - Brick/Veneer (Brick/Veneer)**

**Exterior**

Ceiling Voids	No Asbestos Found
Underfloor Voids - Slab on Ground	Non Accessible Area - Area inaccessible

**Interior**

**B00M - R0001 - Movement Studio**

No Asbestos

**B00M - R0002 - Movement Studio**

No Asbestos

**B00M - R0003 - Movement**

No Asbestos

**B00M - R0004 - External Movement**

No Asbestos

2017

Product	Material Description	Extent	Location Reference	Material Condition	Risk Status	Control Priority
Sample No					Test Result	

***Demountables***

**There are no Demountable(s) located at this school as per the AMS records as of 15 Feb 2017.**

2017

Product	Material Description	Extent	Location Reference	Material Condition	Risk Status	Control Priority
Sample No					Test Result	

*Listing of Electronic Attachments as of 22/03/2017*

**There are no asbestos related file attachment(s) for this school.**

2017