

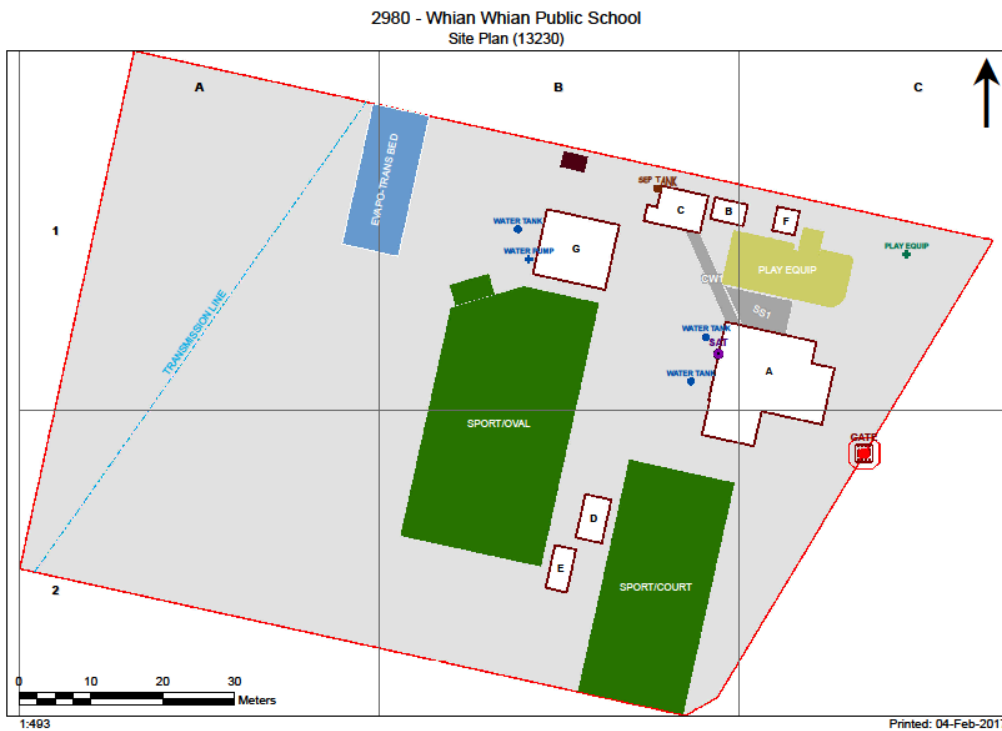
# Asbestos Register

(Hazardous Materials and Risk Assessment)



School : Whian Whian Public School (2980)  
Region : North Coast  
State Electorate : Lismore  
Local Government Area : Lismore

Initial Survey : Noel Arnold & Associates : 12 - Jun - 2008  
Reviewed By : Grencap-NAA : 14 - Apr - 2016



2017

Product	Material Description	Extent	Location Reference	Material Condition	Risk Status	Control Priority
Sample No					Test Result	

**B00A - Administration/Library - 1910 - Timber (Timber)**

**Exterior**

Eaves Linings	Flat AC Sheeting	16m2	Throughout	Good Condition (1)	Low (1)	Low Priority (2-3)
	2980/B00A/Eaves Linings/S7					<b>Chrysotile (white asbestos)</b>
Electrical Backing Board	Resinous Board	1m2	East	Good Condition (1)	Low (1)	Low Priority (2-3)
						<b>Assumed Asbestos - Electrical Hazard</b>
Ceiling Voids	Non Accessible Area - Height Restriction 4m height					
Underfloor Voids	No Asbestos Found					

**Interior**

**B00A - R0001 - General Storeroom**

Ceiling Structures/Linings	Flat AC Sheeting	6m2	Throughout	Good Condition (1)	Low (1)	Low Priority (2-3)
	2980/B00A/R0006/Ceiling Structures/Linings/S1					<b>Chrysotile (white asbestos)</b>

**B00A - R0002 - Principal**

Wall Linings Internal	Flat AC Sheeting					<b>No Asbestos Detected</b>
	2980/B00A/R0004/Wall Linings Internal/S2					

**B00A - R0003 - Withdrawal Space - 1hb**

Wall Linings Internal	Flat AC Sheeting					<b>No Asbestos Detected</b>
	2980/B00A/R0004/Wall Linings Internal/S2					

**B00A - R0004 - Home Base**

Wall Linings Internal	Flat AC Sheeting					<b>No Asbestos Detected</b>
	2980/B00A/R0004/Wall Linings Internal/S2					

**B00A - R0005 - Practical Activities - 1hb**

Ceiling Structures/Linings	Flat AC Sheeting	18m2	Throughout	Good Condition (1)	Low (1)	Low Priority (2-3)
	2980/B00A/R0006/Ceiling Structures/Linings/S1					<b>Chrysotile (white asbestos)</b>

**B00A - R0006 - Personal Effects Storage**

Ceiling Structures/Linings	Flat AC Sheeting	15m2	Throughout	Good Condition (1)	Low (1)	Low Priority (2-3)
	2980/B00A/R0006/Ceiling Structures/Linings/S1					<b>Chrysotile (white asbestos)</b>
Wall Linings Internal	Flat AC Sheeting					<b>No Asbestos Detected</b>
	2980/B00A/R0004/Wall Linings Internal/S2					

**B00A - R0007 - Movement**

No Asbestos

**B00A - R0008 - Covered Outdoor Learning Area**

No Asbestos

2017

Product	Material Description	Extent	Location Reference	Material Condition	Risk Status	Control Priority
Sample No					Test Result	

**B00B - Building Services - 1984 - Metal Shed (Metal Shed)**

**Exterior**

Ceiling Voids	No Asbestos Found
Underfloor Voids	No Asbestos Found

**Interior**

**B00B - R0001 - Sports Store**

No Asbestos

2017

Product	Material Description	Extent	Location Reference	Material Condition	Risk Status	Control Priority
Sample No				Test Result		

**B00C - Pupil Facilities - 1961 - Timber (Timber)****Exterior**

Underfloor Voids - Slab on Ground	Non Accessible Area - Area inaccessible					
Eaves Linings	Flat AC Sheeting 2980/B00C/Eaves Linings/S3	12m2	Throughout	Good Condition (1)	Low (1)	Low Priority (2-3) <b>Chrysotile (white asbestos)</b>
Ceiling Voids	Non Accessible Area - Area inaccessible no access point					
Gable Ends	Fibre Cement Casting (Monocrete) 2980/B00C/Gable Ends/S4	8m2	North & South	Good Condition (1)	Low (1)	Low Priority (2-3) <b>Chrysotile (white asbestos) , Amosite (brown asbestos)</b>

**Interior****B00C - R0001 - Toilets - Girls**

Ceiling Structures/Linings	Flat AC Sheeting 2980/B00C/R0003/Ceiling Structures/Linings/S5	7m2	Throughout	Good Condition (1)	Low (1)	Low Priority (2-3) <b>Chrysotile (white asbestos)</b>
Wall Linings Internal	Flat AC Sheeting 2980/B00C/R0003/Wall Linings Internal/S6	22m2	Throughout	Good Condition (1)	Low (1)	Low Priority (2-3) <b>Chrysotile (white asbestos)</b>

**B00C - R0002 - Cleaning Distributed Store**

Ceiling Structures/Linings	Flat AC Sheeting 2980/B00C/R0003/Ceiling Structures/Linings/S5	1m2	Throughout	Good Condition (1)	Low (1)	Low Priority (2-3) <b>Chrysotile (white asbestos)</b>
Wall Linings Internal	Flat AC Sheeting 2980/B00C/R0003/Wall Linings Internal/S6	4m2	Throughout	Good Condition (1)	Low (1)	Low Priority (2-3) <b>Chrysotile (white asbestos)</b>

**B00C - R0003 - Staff Toilet**

Ceiling Structures/Linings	Flat AC Sheeting 2980/B00C/R0003/Ceiling Structures/Linings/S5	5m2	Throughout	Good Condition (1)	Low (1)	Low Priority (2-3) <b>Chrysotile (white asbestos)</b>
Wall Linings Internal	Flat AC Sheeting 2980/B00C/R0003/Wall Linings Internal/S6	20m2	Throughout	Good Condition (1)	Low (1)	Low Priority (2-3) <b>Chrysotile (white asbestos)</b>

**B00C - R0004 - Toilets - Boys**

Ceiling Structures/Linings	Flat AC Sheeting 2980/B00C/R0003/Ceiling Structures/Linings/S5	10m2	Throughout	Good Condition (1)	Low (1)	Low Priority (2-3) <b>Chrysotile (white asbestos)</b>
Wall Linings Internal	Flat AC Sheeting 2980/B00C/R0003/Wall Linings Internal/S6	22m2	Throughout	Good Condition (1)	Low (1)	Low Priority (2-3) <b>Chrysotile (white asbestos)</b>

**B00C - R0007 - External Movement**

Ceiling Structures/Linings	Flat AC Sheeting 2980/B00C/R0003/Ceiling Structures/Linings/S5	11m2	Throughout	Good Condition (1)	Low (1)	Low Priority (2-3) <b>Chrysotile (white asbestos)</b>
----------------------------	---	------	------------	--------------------	---------	--

Product	Material Description	Extent	Location Reference	Material Condition	Risk Status	Control Priority
Sample No					Test Result	

**B00D - Pupil Facilities - 1961 - Timber (Timber)**

**Exterior**

Ceiling Voids	No Asbestos Found
Underfloor Voids	No Asbestos Found

**Interior**

**B00D - R0001 - Canteen Covered Area**

No Asbestos

2017

Product	Material Description	Extent	Location Reference	Material Condition	Risk Status	Control Priority
Sample No					Test Result	

**B00E - Building Services - 2005 - Metal Shed (Metal Shed)**

**Exterior**

Ceiling Voids	No Asbestos Found
Underfloor Voids	No Asbestos Found

**Interior**

**B00E - R0001 - General Assistant/Bulk Store**

No Asbestos

2017

Product	Material Description	Extent	Location Reference	Material Condition	Risk Status	Control Priority
Sample No					Test Result	

**B00F - Communal Facilities - 2007 - Metal Shed (Metal Shed)**

**Exterior**

Ceiling Voids	No Asbestos Found
Underfloor Voids	No Asbestos Found

**Interior**

**B00F - R0001 - Sports Store**

No Asbestos

2017

Product	Material Description	Extent	Location Reference	Material Condition	Risk Status	Control Priority
Sample No					Test Result	

**B00G - Library - 2010 - Fibre Cement Clad (Fibre Cement Clad)**

**Exterior**

Ceiling Voids	No Asbestos Found
Underfloor Voids	No Asbestos Found

**Interior**

**B00G - R0001 - Reading Area**

No Asbestos

**B00G - R0002 - K.L.A. Store**

No Asbestos

**B00G - R0003 - Practical Activities**

No Asbestos

**B00G - R0004 - External Movement**

No Asbestos

2017



Product	Material Description	Extent	Location Reference	Material Condition	Risk Status	Control Priority
Sample No					Test Result	

**Demountables**

**Demountable details as per the AMS records as of 15 Feb 2017.**

**OS 837 - D18184 - Hcap Shower/Change/Toilet : Placement Date - 20/01/2017**

Note: This refurbished demountable may have asbestos present in remnant mastic in window frames.

**Exterior**

No Asbestos Found.

**Interior**

**R1 - Disabled Shower/Toilet**

No Asbestos Found.

2017

Product	Material Description	Extent	Location Reference	Material Condition	Risk Status	Control Priority
Sample No					Test Result	

*Listing of Electronic Attachments as of 22/03/2017*

**There are no asbestos related file attachment(s) for this school.**

2017