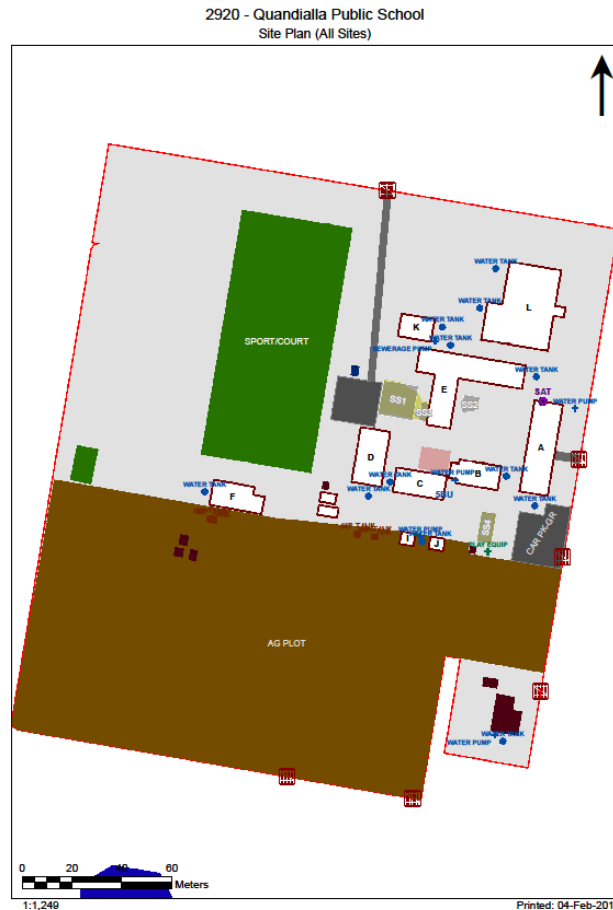


Asbestos Register

(Hazardous Materials and Risk Assessment)

School : Quandialla Central School (2920)
Region : Western NSW
State Electorate : Cootamundra
Local Government Area : Weddin

Initial Survey : Noel Arnold & Associates : 02 - May - 2008
Reviewed By : Parsons Brinckerhoff : 09 - Nov - 2016



2017

Product	Material Description	Extent	Location Reference	Material Condition	Risk Status	Control Priority
Sample No					Test Result	

B00A - Administration/Library - 1977 - Brick/Block (Brick/Block)

Exterior

Underfloor Voids - Slab on Ground	No Asbestos Found					
Eaves Linings	Flat AC Sheeting	20m2	North, South	Good Condition (1)	Low (1)	Low Priority (2-3)
	2920/B00E/Eaves Linings/S14				Chrysotile (white asbestos)	
Gable Verge Lining	Flat AC Sheeting	20m2	North, South	Good Condition (1)	Low (1)	Low Priority (2-3)
	2920/B00D/Gable Verge Lining/S16				Chrysotile (white asbestos) , Amosite (brown asbestos)	
Ceiling Void	No Asbestos Found					

Interior

B00A - R0001 - External Movement

Ceiling Structures/Linings	Flat AC Sheeting	63m2	Throughout	Good Condition (1)	Low (1)	Low Priority (2-3)
	2920/B00A/R0001/Ceiling Structures/Linings/S1				Chrysotile (white asbestos)	
In-fill-panel	Flat AC Sheeting	20m	West, Lower portion	Good Condition (1)	Low (1)	Low Priority (2-3)
	2920/B00A/R0001/In-fill-panel/S2				Chrysotile (white asbestos)	

B00A - R0002 - Special Programs Room

No Asbestos

B00A - R0003 - Reading Area

No Asbestos

B00A - R0004 - Library Office/Workroom

No Asbestos

B00A - R0005 - Library Office/Workroom

Floor Coverings Res/Textile	Vinyl Tiles	7m2	Throughout	Good Condition (1)	Low (1)	Low Priority (2-3)
	2920/B00A/R0005/Floor Coverings Res/Textile/S3				Chrysotile (white asbestos)	

B00A - R0007 - Distribution Board

Note: No inspection of live electrical installation.

Electrical Mounting Board	Resinous Board	3Unit	South, East	Good Condition (1)	Low (1)	Low Priority (2-3)
	2920/B00A/R0007/Electrical Mounting Board/S19				Chrysotile (white asbestos)	

B00A - R0008 - Cleaning Distributed Store

Wall Linings Internal	Flat AC Sheeting	15m2	Throughout	Good Condition (1)	Low (1)	Low Priority (2-3)
	2920/B00A/R0008/Wall Linings Internal/S4				Chrysotile (white asbestos)	

B00A - R0010 - Duplicating Workroom

No Asbestos

B00A - R0011 - Principal

Floor Coverings Res/Textile	Vinyl Tiles	19m2	Throughout	Good Condition (1)	Low (1)	Low Priority (2-3)
	2920/B00A/R0005/Floor Coverings Res/Textile/S3				Chrysotile (white asbestos)	

B00A - R0012 - Staff Toilet

Wall Linings Internal	Flat AC Sheeting	20m2	Throughout	Good Condition (1)	Low (1)	Low Priority (2-3)
	2920/B00A/R0008/Wall Linings Internal/S4				Chrysotile (white asbestos)	

B00A - R0013 - Movement

Floor Coverings Res/Textile	Vinyl Tiles	7m2	Throughout	Good Condition (1)	Low (1)	Low Priority (2-3)
	2920/B00A/R0005/Floor Coverings Res/Textile/S3				Chrysotile (white asbestos)	

B00A - R0015 - External Movement

Ceiling Structures/Linings	Flat AC Sheeting	63m2	Throughout	Good Condition (1)	Low (1)	Low Priority (2-3)
	2920/B00A/R0001/Ceiling Structures/Linings/S1				Chrysotile (white asbestos)	

Product	Material Description	Extent	Location Reference	Material Condition	Risk Status	Control Priority
Sample No					Test Result	
In-fill-panel	Flat AC Sheeting	11m	East, Lower portion	Good Condition (1)	Low (1)	Low Priority (2-3)
2920/B00A/R0001/In-fill-panel/S2					Chrysotile (white asbestos)	
B00A - R0016 - Clerical Office						
Floor Coverings Res/Textile	Vinyl Tiles	32m2	Throughout	Good Condition (1)	Low (1)	Low Priority (2-3)
2920/B00A/R0005/Floor Coverings Res/Textile/S3					Chrysotile (white asbestos)	
B00A - R0017 - Communication Space						
Floor Coverings Res/Textile	Vinyl Tiles	16m2	Throughout	Good Condition (1)	Low (1)	Low Priority (2-3)
2920/B00A/R0005/Floor Coverings Res/Textile/S3					Chrysotile (white asbestos)	
B00A - R0018 - Communication Space						
Floor Coverings Res/Textile	Vinyl Tiles	13m2	Throughout	Good Condition (1)	Low (1)	Low Priority (2-3)
2920/B00A/R0005/Floor Coverings Res/Textile/S3					Chrysotile (white asbestos)	
B00A - R0019 - Computer Resource						
Floor Coverings Res/Textile	Vinyl Tiles	23m2	Throughout	Good Condition (1)	Low (1)	Low Priority (2-3)
2920/B00A/R0005/Floor Coverings Res/Textile/S3					Chrysotile (white asbestos)	

2017

Product	Material Description	Extent	Location Reference	Material Condition	Risk Status	Control Priority
Sample No					Test Result	

B00B - General Learning - 1977 - Timber (Timber)

Exterior

Ceiling Void	No Asbestos Found
Underfloor Void	No Asbestos Found

Interior

B00B - R0001 - External Movement

Electrical Mounting Board	Resinous Board	1Unit	South	Good Condition (1)	Low (1)	Low Priority (2-3)
2920/B00B/R0001/Electrical Mounting Board/S18					Chrysotile (white asbestos)	

B00B - R0002 - Communal Space

No Asbestos

B00B - R0003 - Raised Platform

Floor Coverings Res/Textile	Vinyl Tiles	21m2	Throughout	Good Condition (1)	Low (1)	Low Priority (2-3)
2920/B00E/R0005/Floor Coverings Res/Textile/S5					Chrysotile (white asbestos)	

B00B - R0004 - Cleaning Supplies

No Asbestos

B00B - R0005 - General Storeroom

No Asbestos

B00B - R0006 - General Storeroom

No Asbestos

B00B - R0007 - No Access

No Asbestos

2017

Product	Material Description	Extent	Location Reference	Material Condition	Risk Status	Control Priority
Sample No					Test Result	

B00C - General Learning - 1950 - Timber (Timber)

Exterior

Eaves Linings	Flat AC Sheeting	40m2	North, South	Good Condition (1)	Low (1)	Low Priority (2-3)
	2920/B00C/Eaves Linings/S13				Chrysotile (white asbestos) , Amosite (brown asbestos) , Crocidolite (blue asbestos)	
Ceiling Void	No Asbestos Found					
Underfloor Void	No Asbestos Found					

Interior

B00C - R0001 - Home Base Store

Ceiling Structures/Linings	Flat AC Sheeting	6m2	Throughout	Good Condition (1)	Low (1)	Low Priority (2-3)
	2920/B00C/R0008/Ceiling Structures/Linings/S9				Chrysotile (white asbestos)	

B00C - R0002 - Home Base Store

Electrical Mounting Board	Resinous Board	1Unit	East	Good Condition (1)	Low (1)	Low Priority (2-3)
	2920/B00C/R0002/Electrical Mounting Board/S21				Chrysotile (white asbestos)	

B00C - R0003 - Practical Activities - 1hb

No Asbestos

B00C - R0004 - Home Base

In-fill-panel	Flat AC Sheeting	1m	East. Behind heater	Good Condition (1)	Low (1)	Low Priority (2-3)
	2920/B00C/R0005/In-fill-panel/S10				Chrysotile (white asbestos)	

B00C - R0005 - Home Base

In-fill-panel	Flat AC Sheeting	1m	West, behind heater	Good Condition (1)	Low (1)	Low Priority (2-3)
	2920/B00C/R0005/In-fill-panel/S10				Chrysotile (white asbestos)	

B00C - R0006 - Home Base Store

No Asbestos

B00C - R0007 - Craft Store

Ceiling Structures/Linings	Flat AC Sheeting	6m2	Throughout	Good Condition (1)	Low (1)	Low Priority (2-3)
	2920/B00C/R0008/Ceiling Structures/Linings/S9				Chrysotile (white asbestos)	

B00C - R0008 - External Movement

Wall Linings Internal	Flat AC Sheeting					No Asbestos Detected
	2920/B00C/R0008/Wall Linings Internal/S8					
Ceiling Structures/Linings	Flat AC Sheeting	33m2	Throughout	Good Condition (1)	Low (1)	Low Priority (2-3)
	2920/B00C/R0008/Ceiling Structures/Linings/S9				Chrysotile (white asbestos)	

2017

Product	Material Description	Extent	Location Reference	Material Condition	Risk Status	Control Priority
Sample No					Test Result	

B00D - General Learning - 1977 - Brick/Veneer (Brick/Veneer)

Exterior

Underfloor Voids - Slab on Ground	No Asbestos Found					
Eaves Linings	Flat AC Sheeting	20m2	North, South	Good Condition (1)	Low (1)	Low Priority (2-3)
	2920/B00E/Eaves Linings/S14				Chrysotile (white asbestos)	
Gable Verge Lining	Flat AC Sheeting	20m2	North, South	Good Condition (1)	Low (1)	Low Priority (2-3)
	2920/B00D/Gable Verge Lining/S16				Chrysotile (white asbestos) , Amosite (brown asbestos)	
Ceiling Void	No Asbestos Found					

Interior

B00D - R0001 - External Movement

Ceiling Structures/Linings	Flat AC Sheeting	37m2	Throughout	Good Condition (1)	Low (1)	Low Priority (2-3)
	2920/B00A/R0001/Ceiling Structures/Linings/S1				Chrysotile (white asbestos)	
In-fill-panel	Flat AC Sheeting	10m	West, Lower portion	Good Condition (1)	Low (1)	Low Priority (2-3)
	2920/B00A/R0001/In-fill-panel/S2				Chrysotile (white asbestos)	

B00D - R0002 - General Learning Space

No Asbestos

B00D - R0003 - General Storeroom

Floor Coverings Res/Textile	Vinyl Tiles	7m2	Throughout	Good Condition (1)	Low (1)	Low Priority (2-3)
	2920/B00D/R0004/Floor Coverings Res/Textile/S7				Chrysotile (white asbestos)	

B00D - R0004 - Personal Effects Storage

Floor Coverings Res/Textile	Vinyl Tiles	14m2	Throughout	Good Condition (1)	Low (1)	Low Priority (2-3)
	2920/B00D/R0004/Floor Coverings Res/Textile/S7				Chrysotile (white asbestos)	

B00D - R0005 - Distribution Board

Note: No inspection of live electrical installation.

Electrical Mounting Board	Resinous Board	1Unit	West	Good Condition (1)	Low (1)	Low Priority (2-3)
	2920/B00D/R0005/Electrical Mounting Board/S20				Chrysotile (white asbestos)	

B00D - R0006 - Home Base Store

Floor Coverings Res/Textile	Vinyl Tiles	7m2	Throughout	Good Condition (1)	Low (1)	Low Priority (2-3)
	2920/B00D/R0004/Floor Coverings Res/Textile/S7				Chrysotile (white asbestos)	

B00D - R0007 - Home Base

No Asbestos

B00D - R0008 - Withdrawal Space - 1hb

No Asbestos

B00D - R0009 - External Movement

No Asbestos



Product	Material Description	Extent	Location Reference	Material Condition	Risk Status	Control Priority
Sample No					Test Result	

B00E - General Learning/Pupil Facilities - 1977 - Brick/Block (Brick/Block)

Exterior

Underfloor Voids - Slab on Ground	No Asbestos Found					
Eaves Linings	Flat AC Sheeting	20m2	South, East	Good Condition (1)	Low (1)	Low Priority (2-3)
	2920/B00E/Eaves Linings/S14				Chrysotile (white asbestos)	
Gable Verge Lining	Flat AC Sheeting	20m2	South, East	Good Condition (1)	Low (1)	Low Priority (2-3)
	2920/B00D/Gable Verge Lining/S16				Chrysotile (white asbestos) , Amosite (brown asbestos)	
Ceiling Void	No Asbestos Found					

Interior

B00E - R0001 - Staff Room

Floor Coverings Res/Textile	Vinyl Tiles	40m2	Throughout	Good Condition (1)	Low (1)	Low Priority (2-3)
	2920/B00E/R0005/Floor Coverings Res/Textile/S5				Chrysotile (white asbestos)	

B00E - R0003 - Cleaning Distributed Store

Wall Linings Internal	Flat AC Sheeting	10m2	Throughout	Good Condition (1)	Low (1)	Low Priority (2-3)
	2920/B00A/R0008/Wall Linings Internal/S4				Chrysotile (white asbestos)	

B00E - R0005 - Movement

Floor Coverings Res/Textile	Vinyl Tiles	8m2	Throughout	Good Condition (1)	Low (1)	Low Priority (2-3)
	2920/B00E/R0005/Floor Coverings Res/Textile/S5				Chrysotile (white asbestos)	

B00E - R0006 - Distribution Board

Note: No inspection of live electrical installation.

No Asbestos

B00E - R0007 - Staff Room Annexe

Floor Coverings Res/Textile	Vinyl Tiles	21m2	Throughout	Good Condition (1)	Low (1)	Low Priority (2-3)
	2920/B00E/R0005/Floor Coverings Res/Textile/S5				Chrysotile (white asbestos)	

B00E - R0008 - Staff Room Annexe

No Asbestos

B00E - R0009 - Preparation

Floor Coverings Res/Textile	Vinyl Tiles	13m2	Throughout	Good Condition (1)	Low (1)	Low Priority (2-3)
	2920/B00E/R0005/Floor Coverings Res/Textile/S5				Chrysotile (white asbestos)	

B00E - R0010 - Apparatus Store

Floor Coverings Res/Textile	Vinyl Tiles	13m2	Throughout	Good Condition (1)	Low (1)	Low Priority (2-3)
	2920/B00E/R0005/Floor Coverings Res/Textile/S5				Chrysotile (white asbestos)	

B00E - R0011 - Laboratory L.S.

Floor Coverings Res/Textile	Vinyl Tiles	66m2	Throughout	Good Condition (1)	Low (1)	Low Priority (2-3)
	2920/B00E/R0005/Floor Coverings Res/Textile/S5				Chrysotile (white asbestos)	

B00E - R0012 - Art Learning Space

No Asbestos

B00E - R0014 - Seminar/Study

No Asbestos

B00E - R0016 - External Movement

Wall Linings Internal	Flat AC Sheeting	7m2	North	Good Condition (1)	Low (1)	Low Priority (2-3)
	2920/B00A/R0008/Wall Linings Internal/S4				Chrysotile (white asbestos)	
In-fill-panel	Flat AC Sheeting	20m	Lower portion, Variable positions	Good Condition (1)	Low (1)	Low Priority (2-3)
	2920/B00A/R0001/In-fill-panel/S2				Chrysotile (white asbestos)	

Product	Material Description	Extent	Location Reference	Material Condition	Risk Status	Control Priority
Sample No					Test Result	
Ceiling Structures/Linings	Flat AC Sheeting	108m2	Throughout	Good Condition (1)	Low (1)	Low Priority (2-3)
2920/B00A/R0001/Ceiling Structures/Linings/S1					Chrysotile (white asbestos)	
B00E - R0017 - Food Technology L.S.						
Floor Coverings Res/Textile	Vinyl Tiles	66m2	Throughout	Good Condition (1)	Low (1)	Low Priority (2-3)
2920/B00E/R0005/Floor Coverings Res/Textile/S5					Chrysotile (white asbestos)	
B00E - R0018 - Canteen						
Floor Coverings Res/Textile	Vinyl Tiles	16m2	Throughout	Good Condition (1)	Low (1)	Low Priority (2-3)
2920/B00E/R0005/Floor Coverings Res/Textile/S5					Chrysotile (white asbestos)	
B00E - R0019 - Canteen Office/Store						
No Asbestos						
B00E - R0020 - Staff Toilet						
Incinerette	Encapsulated Insulation material within unit	1Unit(s)	West	Friable Asbestos (5)	Low (1)	Low Priority (2-3)
Assumed Asbestos - Encapsulated material within unit						
Wall Linings Internal	Flat AC Sheeting	10m2	Throughout	Good Condition (1)	Low (1)	Low Priority (2-3)
2920/B00A/R0008/Wall Linings Internal/S4					Chrysotile (white asbestos)	
B00E - R0021 - Movement						
Floor Coverings Res/Textile	Vinyl Tiles	3m2	Throughout	Good Condition (1)	Low (1)	Low Priority (2-3)
2920/B00E/R0005/Floor Coverings Res/Textile/S5					Chrysotile (white asbestos)	
B00E - R0022 - Canteen Office/Store						
Floor Coverings Res/Textile	Vinyl Tiles	3m2	Throughout	Good Condition (1)	Low (1)	Low Priority (2-3)
2920/B00E/R0005/Floor Coverings Res/Textile/S5					Chrysotile (white asbestos)	
Wall Linings Internal	Flat AC Sheeting	10m2	Variable positions	Good Condition (1)	Low (1)	Low Priority (2-3)
2920/B00A/R0008/Wall Linings Internal/S4					Chrysotile (white asbestos)	
B00E - R0024 - Drinking Facilities						
Ceiling Structures/Linings	Flat AC Sheeting	53m2	Throughout	Good Condition (1)	Low (1)	Low Priority (2-3)
2920/B00A/R0001/Ceiling Structures/Linings/S1					Chrysotile (white asbestos)	
B00E - R0025 - General Learning Space						
No Asbestos						
B00E - R0026 - Toilet - Lobby						
Wall Linings Internal	Flat AC Sheeting	12m2	Throughout	Good Condition (1)	Low (1)	Low Priority (2-3)
2920/B00E/R0027/Wall Linings Internal/S17					Chrysotile (white asbestos)	
B00E - R0027 - Staff - Toilet						
Wall Linings Internal	Flat AC Sheeting	12m2	Throughout	Good Condition (1)	Low (1)	Low Priority (2-3)
2920/B00E/R0027/Wall Linings Internal/S17					Chrysotile (white asbestos)	
B00E - R0028 - Toilet - Lobby						
Wall Linings Internal	Flat AC Sheeting	12m2	Throughout	Good Condition (1)	Low (1)	Low Priority (2-3)
2920/B00E/R0027/Wall Linings Internal/S17					Chrysotile (white asbestos)	
B00E - R0029 - Staff - Toilet						
Wall Linings Internal	Flat AC Sheeting	12m2	Throughout	Good Condition (1)	Low (1)	Low Priority (2-3)
2920/B00E/R0027/Wall Linings Internal/S17					Chrysotile (white asbestos)	

Product	Material Description	Extent	Location Reference	Material Condition	Risk Status	Control Priority
Sample No					Test Result	

B00F - Communal Facilities - 1923 - Brick/Block (Brick/Block)

Exterior

Underfloor Voids - Slab on Ground	No Asbestos Found
Ceiling Void	No Asbestos Found

Interior

B00F - R0001 - External Movement

Ceiling Structures/Linings	Flat AC Sheeting	2920/B00F/R0001/Ceiling Structures/Linings/S12	No Asbestos Detected
----------------------------	------------------	--	-----------------------------

B00F - R0002 - Shower/Change

No Asbestos

B00F - R0003 - Sports Store

No Asbestos

B00F - R0004 - Sports Store

No Asbestos

B00F - R0005 - Shower/Change

No Asbestos

B00F - R0006 - P.E. Store

No Asbestos

2017

Product	Material Description	Extent	Location Reference	Material Condition	Risk Status	Control Priority
Sample No					Test Result	

B00G - Agricultural Science - 1977 - Metal Shed (Metal Shed)

Exterior

Underfloor Voids - Slab on Ground	No Asbestos Found
Ceiling Void	No Asbestos Found

Interior

B00G - R0001 - Garden Store

No Asbestos

2017

Product	Material Description	Extent	Location Reference	Material Condition	Risk Status	Control Priority
Sample No					Test Result	

B00H - Agricultural Science - 1977 - Metal Shed (Metal Shed)

Exterior

Underfloor Voids - Slab on Ground	No Asbestos Found					
Minor Debris	Compressed AC Sheet	2m	North	Some Damage / Unsealed (3)	Low (1)	Low Priority (2-3)
	2920/B00H/Debris/S6				Chrysotile (white asbestos)	
Ceiling Void	No Asbestos Found					

Interior

B00H - R0001 - Class Tools Storage

No Asbestos

2017

Product	Material Description	Extent	Location Reference	Material Condition	Risk Status	Control Priority
Sample No					Test Result	

B001 - Pupil Facilities - 1977 - Brick/Block (Brick/Block)

Exterior

Underfloor Voids - Slab on Ground	No Asbestos Found					
Eaves Linings	Flat AC Sheeting	20m2	Throughout	Good Condition (1)	Low (1)	Low Priority (2-3)
	2920/B001/Eaves Linings/S15			Chrysotile (white asbestos) , Amosite (brown asbestos) , Crocidolite (blue asbestos)		
Ceiling Void	No Asbestos Found					

Interior

B001 - R0001 - Toilets - Boys

Ceiling Structures/Linings	Flat AC Sheeting	23m2	Throughout	Good Condition (1)	Low (1)	Low Priority (2-3)
	2920/B001/R0001/Ceiling Structures/Linings/S11			Chrysotile (white asbestos) , Amosite (brown asbestos)		

2017

Product	Material Description	Extent	Location Reference	Material Condition	Risk Status	Control Priority
Sample No					Test Result	

B00J - Pupil Facilities - 1950 - Brick/Block (Brick/Block)

Exterior

Underfloor Voids - Slab on Ground	No Asbestos Found					
Eaves Linings	Flat AC Sheeting	20m2	Throughout	Good Condition (1)	Low (1)	Low Priority (2-3)
	2920/B00I/Eaves Linings/S15			Chrysotile (white asbestos) , Amosite (brown asbestos) , Crocidolite (blue asbestos)		
Ceiling Void	No Asbestos Found					

Interior

B00J - R0001 - Toilets - Girls

Ceiling Structures/Linings	Flat AC Sheeting	25m2	Throughout	Good Condition (1)	Low (1)	Low Priority (2-3)
	2920/B00I/R0001/Ceiling Structures/Linings/S11			Chrysotile (white asbestos) , Amosite (brown asbestos)		

2017

Product	Material Description	Extent	Location Reference	Material Condition	Risk Status	Control Priority
Sample No					Test Result	

B00K - Technological & Applied Studies - 2000 - Steel (Steel)

Exterior

Underfloor Voids - Slab on Ground	No Asbestos Found
Ceiling Voids	No Asbestos Found

Interior

B00K - R0001 - Workshop Area

No Asbestos

B00K - R0002 - Welding Area

No Asbestos

B00K - R0003 - Kiln Room

No Asbestos

B00K - R0004 - Welding/Hot Metals Area

No Asbestos

B00K - R0005 - Materials Store

No Asbestos

2017

Product	Material Description	Extent	Location Reference	Material Condition	Risk Status	Control Priority
Sample No					Test Result	

B00L - Multi Purpose Facilities - 2008 - Steel (Steel)

Exterior

Underfloor Voids - Slab on Ground	No Asbestos Found
Ceiling Voids	No Asbestos Found

Interior

B00L - R0001 - External Movement

No Asbestos

B00L - R0002 - Gymnasium

No Asbestos

B00L - R0004 - Other-Vacant

No Asbestos

B00L - R0005 - Toilet - Lobby

No Asbestos

B00L - R0006 - Toilets - Boys/Disabled Cubicle

No Asbestos

B00L - R0007 - Toilets - Girls/Disabled Cubicle

No Asbestos

B00L - R0008 - Toilet - Lobby

No Asbestos

B00L - R0009 - Sports Store

No Asbestos

2017

Product	Material Description	Extent	Location Reference	Material Condition	Risk Status	Control Priority
Sample No					Test Result	

Demountables

There are no Demountable(s) located at this school as per the AMS records as of 15 Feb 2017.

2017

Product	Material Description	Extent	Location Reference	Material Condition	Risk Status	Control Priority
Sample No					Test Result	

Listing of Electronic Attachments as of 22/03/2017

There are no asbestos related file attachment(s) for this school.

2017