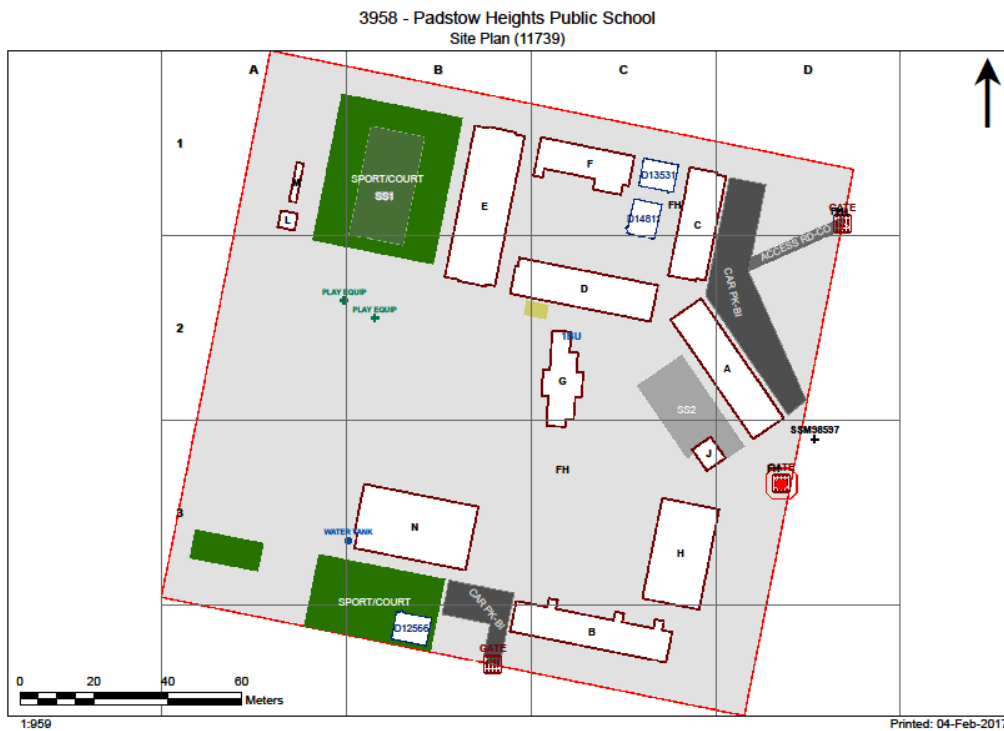


Asbestos Register

(Hazardous Materials and Risk Assessment)

School : Padstow Heights Public School (3958)
Region : South Western Sydney
State Electorate : East Hills
Local Government Area : Bankstown

Initial Survey : Noel Arnold & Associates : 29 - Mar - 2008
Reviewed By : AECOM : 26 - May - 2015



2017

Product	Material Description	Extent	Location Reference	Material Condition	Risk Status	Control Priority
Sample No					Test Result	

B00A - Administration - 1950 - Timber (Timber)

Exterior

Eaves Linings	Flat AC Sheeting	50m2	North, South	Good Condition (1)	Low (1)	Low Priority (2-3)
	3958/B00A/Eaves Linings/S6					Chrysotile (white asbestos)
Ceiling Voids	No Asbestos Found					
Underfloor Voids	No Asbestos Found					

Interior

B00A - R0001 - General Storeroom

No Asbestos

B00A - R0002 - Security Store

No Asbestos

B00A - R0003 - Staff Room

No Asbestos

B00A - R0004 - Staff Room Annexe

No Asbestos

B00A - R0005 - Staff Room Annexe

No Asbestos

B00A - R0006 - Staff Room Annexe

No Asbestos

B00A - R0007 - Movement

No Asbestos

B00A - R0008 - Clerical Office

No Asbestos

B00A - R0009 - Principal

No Asbestos

B00A - R0010 - Staff Kitchen

No Asbestos

B00A - R0011 - Staff Room Annexe

No Asbestos

B00A - R0012 - Duplicating Workroom

No Asbestos

B00A - R0013 - Sick Bay

No Asbestos

B00A - R0014 - Security Store

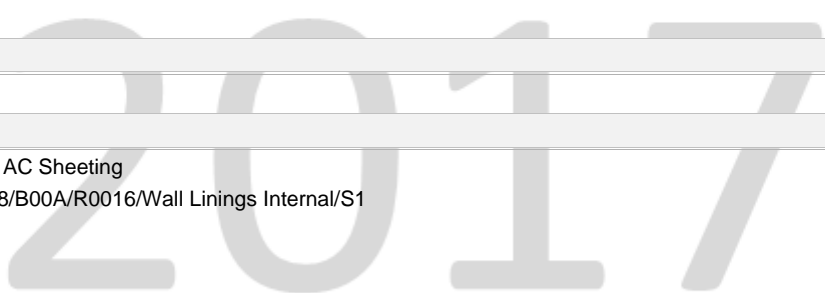
No Asbestos

B00A - R0015 - Movement

No Asbestos

B00A - R0016 - Staff Toilet

Wall Linings Internal	Flat AC Sheeting					No Asbestos Detected
	3958/B00A/R0016/Wall Linings Internal/S1					



Product	Material Description	Extent	Location Reference	Material Condition	Risk Status	Control Priority
Sample No					Test Result	

B00B - General Learning - 1954 - Brick/Veneer (Brick/Veneer)

Exterior

Eaves Linings	Flat AC Sheeting	40m2	North, South	Good Condition (1)	Low (1)	Low Priority (2-3)
	3958/B00B/R0021/Ceiling Structures/Linings/S7				Chrysotile (white asbestos)	
Gable Verge Lining	Flat AC Sheeting	20m2	East, West	Good Condition (1)	Low (1)	Low Priority (2-3)
	3958/B00B/R0021/Ceiling Structures/Linings/S7				Chrysotile (white asbestos)	
Ceiling Voids	No Asbestos Found					
Underfloor Voids	No Asbestos Found					

Interior

B00B - R0001 - Movement

Ceiling Structures/Linings	Flat AC Sheeting	5m2	Throughout	Good Condition (1)	Low (1)	Low Priority (2-3)
	3958/B00B/R0021/Ceiling Structures/Linings/S7				Chrysotile (white asbestos)	

B00B - R0002 - Movement

No Asbestos

B00B - R0003 - General Storeroom

No Asbestos

B00B - R0004 - Cleaning Distributed Store

No Asbestos

B00B - R0005 - General Storeroom

No Asbestos

B00B - R0006 - Movement

No Asbestos

B00B - R0007 - Interview

No Asbestos

B00B - R0008 - General Storeroom

No Asbestos

B00B - R0009 - Home Base

No Asbestos

B00B - R0010 - Home Base Store

No Asbestos

B00B - R0011 - Personal Effects Storage

No Asbestos

B00B - R0012 - Movement

No Asbestos

B00B - R0013 - Movement

Ceiling Structures/Linings	Flat AC Sheeting	5m2	Throughout	Good Condition (1)	Low (1)	Low Priority (2-3)
	3958/B00B/R0021/Ceiling Structures/Linings/S7				Chrysotile (white asbestos)	

B00B - R0014 - Home Base

No Asbestos

B00B - R0015 - Home Base Store

No Asbestos

B00B - R0016 - Special Programs Room

Wall Linings Internal	Flat AC Sheeting					No Asbestos Detected
	3958/B00B/R0016/Wall Linings Internal/S5					

B00B - R0017 - Home Base Store

No Asbestos

B00B - R0018 - General Storeroom

No Asbestos

Product	Material Description	Extent	Location Reference	Material Condition	Risk Status	Control Priority
Sample No						Test Result
B00B - R0019 - Personal Effects Storage						
No Asbestos						
B00B - R0020 - Movement						
No Asbestos						
B00B - R0021 - Movement						
Ceiling Structures/Linings	Flat AC Sheeting	5m2	Throughout	Good Condition (1)	Low (1)	Low Priority (2-3)
3958/B00B/R0021/Ceiling Structures/Linings/S7						Chrysotile (white asbestos)
B00B - R0022 - Home Base						
No Asbestos						
B00B - R9001 - Garden Store						
No Asbestos						

2017

Product	Material Description	Extent	Location Reference	Material Condition	Risk Status	Control Priority
Sample No				Test Result		

B00C - General Learning - 1980 - Timber (Timber)

Exterior

Eaves Linings	Flat AC Sheeting	40m2	East, West	Good Condition (1)	Low (1)	Low Priority (2-3)
	3958/B00C/R0001/Ceiling Structures/Linings/S2			Chrysotile (white asbestos) , Amosite (brown asbestos)		
Ceiling Voids	Non Accessible Area - Area inaccessible access sealed off					
Underfloor Voids	No Asbestos Found					

Interior

B00C - R0001 - Cleaning Distributed Store

Ceiling Structures/Linings	Flat AC Sheeting	6m2	Throughout	Good Condition (1)	Low (1)	Low Priority (2-3)
	3958/B00C/R0001/Ceiling Structures/Linings/S2			Chrysotile (white asbestos) , Amosite (brown asbestos)		

B00C - R0002 - Home Base

Wall Linings Internal	Flat AC Sheeting	2m2	Behind Heater	Good Condition (1)	Low (1)	Low Priority (2-3)
	3958/B00C/R0004/Wall Linings Internal/S3			Chrysotile (white asbestos) , Amosite (brown asbestos)		

B00C - R0003 - Practical Activities/Movement - 4hb

Wall Linings Internal	Flat AC Sheeting	2m2	Behind Heater	Good Condition (1)	Low (1)	Low Priority (2-3)
	3958/B00C/R0004/Wall Linings Internal/S3			Chrysotile (white asbestos) , Amosite (brown asbestos)		

B00C - R0004 - Practical Activities/Movement - 4hb

Wall Linings Internal	Flat AC Sheeting	2m2	Behind Heater	Good Condition (1)	Low (1)	Low Priority (2-3)
	3958/B00C/R0004/Wall Linings Internal/S3			Chrysotile (white asbestos) , Amosite (brown asbestos)		

B00C - R0005 - Home Base

Wall Linings Internal	Flat AC Sheeting	2m2	Behind Heater	Good Condition (1)	Low (1)	Low Priority (2-3)
	3958/B00C/R0004/Wall Linings Internal/S3			Chrysotile (white asbestos) , Amosite (brown asbestos)		

B00C - R0006 - Movement

Ceiling Structures/Linings	Flat AC Sheeting	60m2	Throughout	Good Condition (1)	Low (1)	Low Priority (2-3)
	3958/B00C/R0001/Ceiling Structures/Linings/S2			Chrysotile (white asbestos) , Amosite (brown asbestos)		

2017

Product	Material Description	Extent	Location Reference	Material Condition	Risk Status	Control Priority
Sample No				Test Result		

B00D - General Learning - 1950 - Timber (Timber)**Exterior**

Eaves Linings	Flat AC Sheeting	50m2	North, South	Good Condition (1)	Low (1)	Low Priority (2-3)
	3958/B00D/Eaves Linings/S8					Chrysotile (white asbestos) , Amosite (brown asbestos) , Crocidolite (blue asbestos)
Ceiling Voids	No Asbestos Found					
Underfloor Voids	No Asbestos Found					

Interior**B00D - R0001 - Home Base**

Wall Linings Internal	Flat AC Sheeting	2m2	Behind Heater	Good Condition (1)	Low (1)	Low Priority (2-3)
	3958/B00D/Eaves Linings/S8					Chrysotile (white asbestos) , Amosite (brown asbestos) , Crocidolite (blue asbestos)

B00D - R0002 - Home Base Store

No Asbestos

B00D - R0003 - Movement

No Asbestos

B00D - R0004 - General Storeroom

No Asbestos

B00D - R0005 - Home Base

Wall Linings Internal	Flat AC Sheeting	2m2	Behind Heater	Good Condition (1)	Low (1)	Low Priority (2-3)
	3958/B00D/Eaves Linings/S8					Chrysotile (white asbestos) , Amosite (brown asbestos) , Crocidolite (blue asbestos)

B00D - R0006 - Home Base Store

No Asbestos

B00D - R0007 - Cleaning Distributed Store

Ceiling Structures/Linings	Flat AC Sheeting	9m2	Throughout	Good Condition (1)	Low (1)	Low Priority (2-3)
	3958/B00D/Eaves Linings/S8					Chrysotile (white asbestos) , Amosite (brown asbestos) , Crocidolite (blue asbestos)

B00D - R0008 - General Storeroom

No Asbestos

B00D - R0009 - General Storeroom

No Asbestos

B00D - R0010 - Home Base

Wall Linings Internal	Flat AC Sheeting	2m2	Behind Heater	Good Condition (1)	Low (1)	Low Priority (2-3)
	3958/B00D/Eaves Linings/S8					Chrysotile (white asbestos) , Amosite (brown asbestos) , Crocidolite (blue asbestos)

B00D - R0011 - Home Base

Wall Linings Internal	Flat AC Sheeting	2m2	Behind Heater	Good Condition (1)	Low (1)	Low Priority (2-3)
	3958/B00D/Eaves Linings/S8					Chrysotile (white asbestos) , Amosite (brown asbestos) , Crocidolite (blue asbestos)

B00D - R0012 - Home Base Store

No Asbestos

B00D - R0013 - Movement

Ceiling Structures/Linings	Flat AC Sheeting	77m2	Throughout	Good Condition (1)	Low (1)	Low Priority (2-3)
	3958/B00D/Eaves Linings/S8					Chrysotile (white asbestos) , Amosite (brown asbestos) , Crocidolite (blue asbestos)

Product	Material Description	Extent	Location Reference	Material Condition	Risk Status	Control Priority
Sample No					Test Result	

B00E - General Learning - 1950 - Timber (Timber)**Exterior**

Ceiling Voids	No Asbestos Found
Eaves Linings	No Asbestos Found
Underfloor Voids	No Asbestos Found

Interior**B00E - R0001 - Staff Toilet**

Ceiling Structures/Linings	Flat AC Sheeting	3m2	Throughout	Good Condition (1)	Low (1)	Low Priority (2-3)
3958/B00C/R0001/Ceiling Structures/Linings/S2				Chrysotile (white asbestos) , Amosite (brown asbestos)		

B00E - R0002 - Special Programs Room

No Asbestos

B00E - R0003 - Uniform Shop

No Asbestos

B00E - R0004 - Home Base

Wall Linings Internal	Flat AC Sheeting	2m2	Behind Heater	Good Condition (1)	Low (1)	Low Priority (2-3)
3958/B00C/R0004/Wall Linings Internal/S3				Chrysotile (white asbestos) , Amosite (brown asbestos)		

Ceiling Structures/Linings No Asbestos Found

B00E - R0005 - Home Base

No Asbestos

B00E - R0008 - Home Base

Wall Linings Internal	Flat AC Sheeting	2m2	Behind Heater	Good Condition (1)	Low (1)	Low Priority (2-3)
3958/B00C/R0004/Wall Linings Internal/S3				Chrysotile (white asbestos) , Amosite (brown asbestos)		

Ceiling Structures/Linings No Asbestos Found

B00E - R0009 - Home Base

Wall Linings Internal	Flat AC Sheeting	2m2	Behind Heater	Good Condition (1)	Low (1)	Low Priority (2-3)
3958/B00C/R0004/Wall Linings Internal/S3				Chrysotile (white asbestos) , Amosite (brown asbestos)		

Ceiling Structures/Linings No Asbestos Found

B00E - R0010 - General Storeroom

Ceiling Structures/Linings No Asbestos Found

B00E - R0011 - Sports Store

Ceiling Structures/Linings No Asbestos Found

B00E - R0012 - External Movement

Ceiling Structures/Linings	Flat AC Sheeting	40m2	Throughout	Good Condition (1)	Low (1)	Low Priority (2-3)
3958/B00E/R0013/Ceiling Structures/Linings/S9				Chrysotile (white asbestos) , Amosite (brown asbestos) , Crocidolite (blue asbestos)		

Wall Linings Internal	Flat AC Sheeting	2m2	North, Upper portion	Good Condition (1)	Low (1)	Low Priority (2-3)
3958/B00E/R0013/Ceiling Structures/Linings/S9				Chrysotile (white asbestos) , Amosite (brown asbestos) , Crocidolite (blue asbestos)		

B00E - R0013 - External Movement

Ceiling Structures/Linings	Flat AC Sheeting	50m2	Throughout	Good Condition (1)	Low (1)	Low Priority (2-3)
3958/B00E/R0013/Ceiling Structures/Linings/S9				Chrysotile (white asbestos) , Amosite (brown asbestos) , Crocidolite (blue asbestos)		

Wall Linings Internal	Flat AC Sheeting	2m2	North, Upper portion	Good Condition (1)	Low (1)	Low Priority (2-3)
3958/B00E/R0013/Ceiling Structures/Linings/S9				Chrysotile (white asbestos) , Amosite (brown asbestos) , Crocidolite (blue asbestos)		

Product	Material Description	Extent	Location Reference	Material Condition	Risk Status	Control Priority
Sample No					Test Result	

B00E - R0015 - External Movement

No Asbestos

B00E - R0016 - Special Programs Room

No Asbestos

2017

Product	Material Description	Extent	Location Reference	Material Condition	Risk Status	Control Priority
Sample No					Test Result	

B00F - Communal Facilities - 1950 - Timber (Timber)**Exterior**

Eaves Linings	Flat AC Sheeting	30m2	North, South	Good Condition (1)	Low (1)	Low Priority (2-3)
	3958/B00E/R0013/Ceiling Structures/Linings/S9					Chrysotile (white asbestos) , Amosite (brown asbestos) , Crocidolite (blue asbestos)
Ceiling Voids	No Asbestos Found					
Underfloor Voids	No Asbestos Found					

Interior**B00F - R0001 - Movement**

Ceiling Structures/Linings	Flat AC Sheeting	5m2	Throughout	Good Condition (1)	Low (1)	Low Priority (2-3)
	3958/B00C/R0001/Ceiling Structures/Linings/S2					Chrysotile (white asbestos) , Amosite (brown asbestos)

B00F - R0002 - Movement

No Asbestos

B00F - R0003 - General Storeroom

No Asbestos

B00F - R0004 - Communal Space

Wall Linings Internal	Flat AC Sheeting	2m2	Behind Heater	Good Condition (1)	Low (1)	Low Priority (2-3)
	3958/B00C/R0004/Wall Linings Internal/S3					Chrysotile (white asbestos) , Amosite (brown asbestos)

B00F - R0005 - Communal Space

Wall Linings Internal	Flat AC Sheeting	2m2	Behind Heater	Good Condition (1)	Low (1)	Low Priority (2-3)
	3958/B00C/R0004/Wall Linings Internal/S3					Chrysotile (white asbestos) , Amosite (brown asbestos)

B00F - R0006 - Music Store

No Asbestos

B00F - R0007 - Staff Toilet

Wall Linings Internal	Flat AC Sheeting	2m2	Throughout	Good Condition (1)	Low (1)	Low Priority (2-3)
	3958/B00F/R0007/Wall Linings Internal/S4					Chrysotile (white asbestos) , Amosite (brown asbestos)

B00F - R0008 - Handwashing Facilities

No Asbestos

B00F - R0009 - Staff Kitchen

No Asbestos

B00F - R0010 - Raised Platform

No Asbestos

2017

Product	Material Description	Extent	Location Reference	Material Condition	Risk Status	Control Priority
Sample No					Test Result	

B00G - Pupil Facilities - 1950 - Brick/Block (Brick/Block)

Exterior

Eaves Linings	Flat AC Sheeting 3958/B00G/Eaves Linings/S10					No Asbestos Detected
Ceiling Voids - Raked Ceiling	Non Accessible Area - Area inaccessible					
Underfloor Voids - Slab on Ground	No Asbestos Found					

Interior

B00G - R0001 - Drinking Facilities

No Asbestos

B00G - R0002 - Handwashing Facilities

No Asbestos

B00G - R0003 - Toilets - Boys

No Asbestos

B00G - R0004 - Cleaning Distributed Store

No Asbestos

B00G - R0005 - Handwashing Facilities

No Asbestos

B00G - R0006 - Toilets - Girls

No Asbestos

B00G - R0007 - Toilets - Boys

No Asbestos

B00G - R0008 - Drinking Facilities

No Asbestos

B00G - R0009 - Drinking Facilities

No Asbestos

B00G - R0010 - Toilets - Girls

No Asbestos

B00G - R0011 - Movement

No Asbestos

B00G - R0012 - Disabled Toilet

No Asbestos

2017

Product	Material Description	Extent	Location Reference	Material Condition	Risk Status	Control Priority
Sample No					Test Result	

B00H - Library - 1950 - Brick/Block (Brick/Block)

Exterior

Ceiling Voids - Raked Ceiling Non Accessible Area
 - Area inaccessible

Underfloor Voids - Slab on Ground No Asbestos Found

Interior

B00H - R0001 - Reading Area

No Asbestos

B00H - R0002 - K.L.A. Store

No Asbestos

B00H - R0003 - Library Office/Workroom

No Asbestos

B00H - R0007 - Movement

No Asbestos

B00H - R0008 - Distribution Board

Note: No inspection of live electrical installation.

No Asbestos

2017

Product	Material Description	Extent	Location Reference	Material Condition	Risk Status	Control Priority
Sample No					Test Result	

B00J - Pupil Facilities - 1950 - Brick/Block (Brick/Block)**Exterior**

Eaves Linings	Flat AC Sheeting	5m2	South	Good Condition (1)	Low (1)	Low Priority (2-3)
	3958/B00J/Eaves Linings/S11				Chrysotile (white asbestos) , Amosite (brown asbestos) , Crocidolite (blue asbestos)	
Ceiling Voids - Raked Ceiling	Non Accessible Area					
	- Area inaccessible					
Underfloor Voids - Slab on Ground	No Asbestos Found					

Interior**B00J - R0001 - Movement**

Ceiling Structures/Linings	Flat AC Sheeting	13m2	Throughout	Good Condition (1)	Low (1)	Low Priority (2-3)
	3958/B00J/Eaves Linings/S11				Chrysotile (white asbestos) , Amosite (brown asbestos) , Crocidolite (blue asbestos)	

B00J - R0002 - Canteen

Ceiling Structures/Linings	Flat AC Sheeting	17m2	Throughout	Good Condition (1)	Low (1)	Low Priority (2-3)
	3958/B00J/Eaves Linings/S11				Chrysotile (white asbestos) , Amosite (brown asbestos) , Crocidolite (blue asbestos)	

B00J - R0003 - Canteen Office/Store

Ceiling Structures/Linings	Flat AC Sheeting	3m2	Throughout	Good Condition (1)	Low (1)	Low Priority (2-3)
	3958/B00J/Eaves Linings/S11				Chrysotile (white asbestos) , Amosite (brown asbestos) , Crocidolite (blue asbestos)	

B00J - R0004 - Canteen Office/Store

Ceiling Structures/Linings	Flat AC Sheeting	4m2	Throughout	Good Condition (1)	Low (1)	Low Priority (2-3)
	3958/B00J/Eaves Linings/S11				Chrysotile (white asbestos) , Amosite (brown asbestos) , Crocidolite (blue asbestos)	

2017

Product	Material Description	Extent	Location Reference	Material Condition	Risk Status	Control Priority
Sample No					Test Result	

B00L - Building Services - 1950 - Timber (Timber)

Exterior

Ceiling Voids - Flat Roof	No Asbestos Found
Underfloor Voids - Slab on Ground	No Asbestos Found

Interior

B00L - R0001 - Hall Chair Store

No Asbestos

B00L - R0002 - Hall Chair Store

No Asbestos

2017

Product	Material Description	Extent	Location Reference	Material Condition	Risk Status	Control Priority
Sample No					Test Result	

B00M - Building Services - 1950 - Timber (Timber)

Exterior

Ceiling Voids - Raked Ceiling Non Accessible Area
 - Area inaccessible

Underfloor Voids - Slab on Ground No Asbestos Found

Interior

B00M - R0001 - Sports Store

No Asbestos

B00M - R0002 - Garden Store

No Asbestos

B00M - R0003 - General Storeroom

No Asbestos

B00M - R0004 - No Access

No Asbestos

2017

Product	Material Description	Extent	Location Reference	Material Condition	Risk Status	Control Priority
Sample No					Test Result	

B00N - Communal Facilities - 2010 - Brick/Veneer (Brick/Veneer)**Exterior**

Ceiling Voids	No Asbestos Found
Underfloor Voids	No Asbestos Found

Interior**B00N - R0001 - Communal Space**

No Asbestos

B00N - R0002 - Raised Platform

No Asbestos

B00N - R0003 - Hall Chair Store

No Asbestos

B00N - R0004 - Communal/Performance Store

No Asbestos

B00N - R0005 - P.E. Store

No Asbestos

B00N - R0006 - Toilet - Lobby

No Asbestos

B00N - R0007 - Toilets - Girls

No Asbestos

B00N - R0008 - Sound Cupboard

No Asbestos

B00N - R0009 - Toilet - Lobby

No Asbestos

B00N - R0010 - Toilets - Boys

No Asbestos

B00N - R0011 - Cleaning Distributed Store

No Asbestos

B00N - R0012 - General Storeroom

No Asbestos

B00N - R0013 - Main Switch Board

No Asbestos

B00N - R0014 - Access Shower/Toilet/Change

No Asbestos

B00N - R0015 - Covered Outdoor Learning Area

No Asbestos

B00N - R0016 - Movement

No Asbestos

B00N - R0017 - Ramp

No Asbestos

B00N - R0018 - Canteen

No Asbestos

B00N - R0019 - Canteen Office/Store

No Asbestos

B00N - R0020 - Movement

No Asbestos

Product	Material Description	Extent	Location Reference	Material Condition	Risk Status	Control Priority
Sample No					Test Result	

Demountables

Demountable details as per the AMS records as of 15 Feb 2017.

OS 601 - D12566 - Learning Unit - Standard/Withdrawal : Placement Date - 14/02/2008

Exterior

Step Treads	Compressed AC Sheet	Assumed Asbestos	1.08 m2
Landing	Compressed AC Sheet	Assumed Asbestos	1.2 m2
Eave Lining	Flat AC Sheet	Assumed Asbestos	11.52 m2

Interior

R1 - Entry

End wall panel	Flat AC Sheet	Assumed Asbestos	18 m2
Ceiling	Flat AC Sheet	Assumed Asbestos	8 m2

R2 - General Learning Space

End wall panel	Flat AC Sheet	Assumed Asbestos	18 m2
Ceiling	Flat AC Sheet	Assumed Asbestos	55 m2

R3 - Store

Ceiling	Flat AC Sheet	Assumed Asbestos	10 m2
---------	---------------	------------------	-------

OS 602 - D13531 - Learning Unit - Standard With P.A.A. : Placement Date - 25/11/2004

Exterior

Step Treads	Compressed AC Sheet	Assumed Asbestos	1.08 m2
Landing	Compressed AC Sheet	Assumed Asbestos	1.2 m2
Eave Lining	Flat AC Sheet	Assumed Asbestos	11.52 m2

Interior

R1 - Learning space/withdrawal/entry

Ceiling	Flat AC Sheet	Assumed Asbestos	70 m2
---------	---------------	------------------	-------

R2 - Home Base Store

End wall panel	Flat AC Sheet	Assumed Asbestos	18 m2
Ceiling	Flat AC Sheet	Assumed Asbestos	3 m2

OS 601 - D14811 - Learning Unit - Standard/Withdrawal : Placement Date - 15/06/2006

Exterior

Step Treads	Compressed AC Sheet	Assumed Asbestos	1.08 m2
Landing	Compressed AC Sheet	Assumed Asbestos	1.2 m2
Eave Lining	Flat AC Sheet	Assumed Asbestos	11.52 m2

Interior

R1 - Entry

End wall panel	Flat AC Sheet	Assumed Asbestos	18 m2
Ceiling	Flat AC Sheet	Assumed Asbestos	8 m2

R2 - General Learning Space

End wall panel	Flat AC Sheet	Assumed Asbestos	18 m2
Ceiling	Flat AC Sheet	Assumed Asbestos	55 m2

R3 - Store

Ceiling	Flat AC Sheet	Assumed Asbestos	10 m2
---------	---------------	------------------	-------

Product	Material Description	Extent	Location Reference	Material Condition	Risk Status	Control Priority
Sample No					Test Result	

Listing of Electronic Attachments as of 22/03/2017

Available Asbestos Related Electronic Files

3958_ASB_100913_AMP.pdf

* Note : Refer to AMS for details of the attachment(s).

2017