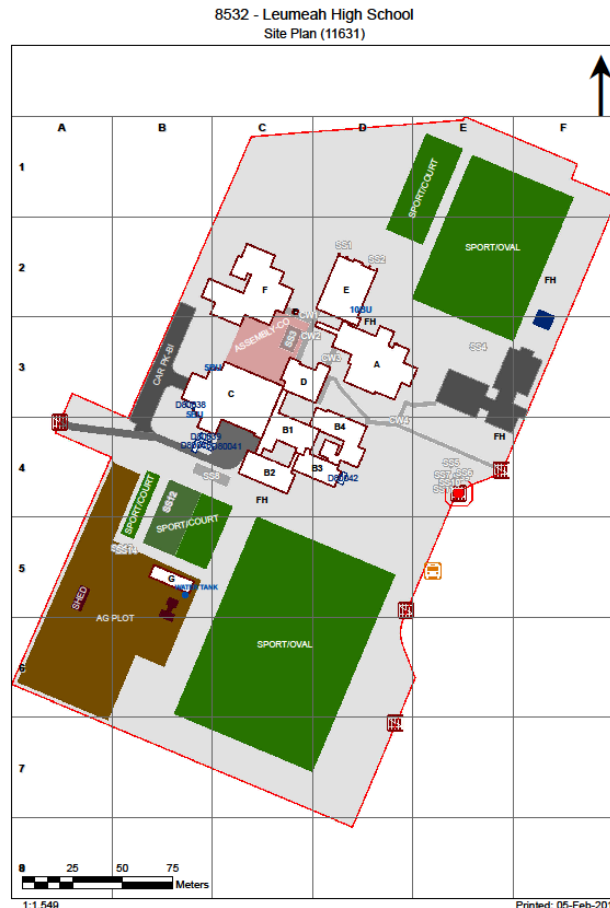


Asbestos Register

(Hazardous Materials and Risk Assessment)

School : Leumeah High School (8532)
Region : South Western Sydney
State Electorate : Macquarie Fields
Local Government Area : Campbelltown

Initial Survey : Noel Arnold & Associates : 19 - May - 2008
Reviewed By : Grencap-NAA : 26 - Aug - 2014



2017

Product	Material Description	Extent	Location Reference	Material Condition	Risk Status	Control Priority
Sample No					Test Result	

B00A - Science/General Learning - 1976 - Brick/Block (Brick/Block)

Exterior

Ceiling Voids - Flat Roof	Non Accessible Area - Area inaccessible
Underfloor Voids - Slab on Ground	Non Accessible Area - Area inaccessible

Interior

B00A - R0001 - General Learning Space (52.08 m2)

No Asbestos

B00A - R0002 - General Learning Space (52.22 m2)

No Asbestos

B00A - R0003 - Chemical Store (18.3 m2)

Floor Coverings Res/Textile	Vinyl Tiles					
		8532/B00A/R0014/Floor Coverings Res/Textile/S3				No Asbestos Detected

B00A - R0004 - Cleaning Store - Distributed (5.74 m2)

No Asbestos

B00A - R0005 - Laboratory L.S. (92.23 m2)

Floor Coverings Res/Textile	Vinyl Tiles					
		8532/B00A/R0014/Floor Coverings Res/Textile/S3				No Asbestos Detected

B00A - R0006 - Preparation (45.91 m2)

Floor Coverings Res/Textile	Vinyl Tiles					
		8532/B00A/R0014/Floor Coverings Res/Textile/S3				No Asbestos Detected

B00A - R0007 - Lift (1.4 m2)

Floor Coverings Res/Textile	Vinyl Tiles					
		8532/B00A/R0014/Floor Coverings Res/Textile/S3				No Asbestos Detected

B00A - R0008 - Distribution Board Cupboard (0.94 m2)

Note: No inspection of live electrical installation.

Electrical Mounting Board	Resinous Board	2Unit	Throughout	Good Condition (1)	Low (1)	Low Priority (2-3)
		8532/B0B1/R0003/Electrical Mounting Board/S24				Chrysotile (white asbestos)

B00A - R0009 - Laboratory L.S. (92.14 m2)

Floor Coverings Res/Textile	Vinyl Tiles					
		8532/B00A/R0014/Floor Coverings Res/Textile/S3				No Asbestos Detected

B00A - R0010 - Secure Storeroom (28.2 m2)

Floor Coverings Res/Textile	Vinyl Tiles					
		8532/B00A/R0014/Floor Coverings Res/Textile/S3				No Asbestos Detected

B00A - R0011 - General Learning Space (51.5 m2)

No Asbestos

B00A - R0012 - Cleaning Store - Distributed (1.25 m2)

No Asbestos

B00A - R0013 - Distribution Board Cupboard (0.6 m2)

Note: No inspection of live electrical installation.

Electrical Mounting Board	Resinous Board					
		8532/B0B1/R1009/Floor Coverings Res/Textile/S5				No Asbestos Detected

B00A - R0014 - Secure Storeroom (13.93 m2)

Floor Coverings Res/Textile	Vinyl Tiles					
		8532/B00A/R0014/Floor Coverings Res/Textile/S3				No Asbestos Detected

B00A - R0015 - Staff Study (13.99 m2)

Product	Material Description	Extent	Location Reference	Material Condition	Risk Status	Control Priority
Sample No						Test Result
No Asbestos						
B00A - R0016 - Computer Learning Space (52.22 m2)						
No Asbestos						
B00A - R0017 - Movement (158.24 m2)						
No Asbestos						
B00A - R0018 - Toilets-Boys (17.98 m2)						
Partition Walls (Cubicles)	Compressed AC Sheet	2m2	Throughout	Good Condition (1)	Low (1)	Low Priority (2-3)
8532/B00C/R0016/Partition Walls (Cubicles)/S2				Chrysotile (white asbestos) , Amosite (brown asbestos)		
B00A - R0019 - Cleaning Store - Distributed (4.15 m2)						
No Asbestos						
B00A - R0023 - Movement (24.25 m2)						
Recently Modified Space Requires Inspection						
B00A - R0024 - Stairs (0.77 m2)						
Recently Modified Space Requires Inspection						
B00A - R0025 - Movement (79.99 m2)						
Recently Modified Space Requires Inspection						
B00A - R0026 - Stairs (0.33 m2)						
Recently Modified Space Requires Inspection						
B00A - R1001 - General Learning Space (52.14 m2)						
Ceiling Structures/Linings	Vermiculite					
8532/B00E/R0015/Ceiling Structures/Linings/S29				Limited Samples Taken		
Vermiculite Ceilings may contain asbestos. Asbestos testing MUST be conducted prior to any disturbance works						
B00A - R1002 - General Learning Space (52.21 m2)						
Ceiling Structures/Linings	Vermiculite					
8532/B00E/R0015/Ceiling Structures/Linings/S29				Limited Samples Taken		
Vermiculite Ceilings may contain asbestos. Asbestos testing MUST be conducted prior to any disturbance works						
B00A - R1003 - Toilets-Girls (18.42 m2)						
Partition Walls (Cubicles)	Compressed AC Sheet	8m2	Throughout	Good Condition (1)	Low (1)	Low Priority (2-3)
8532/B00C/R0016/Partition Walls (Cubicles)/S2				Chrysotile (white asbestos) , Amosite (brown asbestos)		
B00A - R1004 - Laboratory L.S. (92.14 m2)						
Floor Coverings Res/Textile	Vinyl Tiles					
8532/B00A/R0014/Floor Coverings Res/Textile/S3				No Asbestos Detected		
B00A - R1005 - Cleaning Store - Distributed (1.34 m2)						
No Asbestos						
B00A - R1006 - Preparation (46.08 m2)						
Floor Coverings Res/Textile	Vinyl Tiles					
8532/B00A/R0014/Floor Coverings Res/Textile/S3				No Asbestos Detected		
B00A - R1007 - Distribution Board Cupboard (0.98 m2)						
Note: No inspection of live electrical installation.						
Electrical Mounting Board	Resinous Board	2Unit	Throughout	Good Condition (1)	Low (1)	Low Priority (2-3)
8532/B0B1/R0003/Electrical Mounting Board/S24				Chrysotile (white asbestos)		
B00A - R1008 - Laboratory L.S. (92.3 m2)						
Floor Coverings Res/Textile	Vinyl Tiles					
8532/B00A/R0014/Floor Coverings Res/Textile/S3				No Asbestos Detected		
B00A - R1009 - Computer Resource (28.2 m2)						
No Asbestos						

Product	Material Description	Extent	Location Reference	Material Condition	Risk Status	Control Priority
Sample No					Test Result	
B00A - R1010 - General Learning Space (51.57 m2)						
Ceiling Structures/Linings	Vermiculite					
	8532/B00E/R0015/Ceiling Structures/Linings/S29					Limited Samples Taken
<i>Vermiculite Ceilings may contain asbestos. Asbestos testing MUST be conducted prior to any disturbance works</i>						
B00A - R1011 - Cleaning Store - Distributed (1.13 m2)						
No Asbestos						
B00A - R1012 - Distribution Board Cupboard (0.64 m2)						
Note: No inspection of live electrical installation.						
Electrical Mounting Board	Resinous Board	2Unit	Throughout	Good Condition (1)	Low (1)	Low Priority (2-3)
	8532/B0B1/R0003/Electrical Mounting Board/S24					Chrysotile (white asbestos)
B00A - R1013 - Staff Study (27.44 m2)						
Ceiling Structures/Linings	Vermiculite					
	8532/B00E/R0015/Ceiling Structures/Linings/S29					Limited Samples Taken
<i>Vermiculite Ceilings may contain asbestos. Asbestos testing MUST be conducted prior to any disturbance works</i>						
B00A - R1014 - General Learning Space (52.22 m2)						
Ceiling Structures/Linings	Vermiculite					
	8532/B00E/R0015/Ceiling Structures/Linings/S29					Limited Samples Taken
<i>Vermiculite Ceilings may contain asbestos. Asbestos testing MUST be conducted prior to any disturbance works</i>						
B00A - R1017 - Toilets-Girls (18.01 m2)						
Partition Walls (Cubicles)	Compressed AC Sheet	12m2	Throughout	Good Condition (1)	Low (1)	Low Priority (2-3)
	8532/B00C/R0016/Partition Walls (Cubicles)/S2					Chrysotile (white asbestos) , Amosite (brown asbestos)
B00A - R1019 - Stairs (3.19 m2)						
Recently Modified Space	Requires Inspection					
B00A - R1020 - Stairs (3.24 m2)						
Recently Modified Space	Requires Inspection					
B00A - R1021 - Stairs (3.98 m2)						
Recently Modified Space	Requires Inspection					
B00A - R1022 - Movement (68.46 m2)						
Recently Modified Space	Requires Inspection					
B00A - R1023 - Movement (171.84 m2)						
Recently Modified Space	Requires Inspection					
B00A - R2001 - Laboratory L.S. (91.88 m2)						
Floor Coverings Res/Textile	Vinyl Tiles					
	8532/B00A/R0014/Floor Coverings Res/Textile/S3					No Asbestos Detected
Ceiling Structures/Linings	Vermiculite					
	8532/B00E/R0015/Ceiling Structures/Linings/S29					Limited Samples Taken
<i>Vermiculite Ceilings may contain asbestos. Asbestos testing MUST be conducted prior to any disturbance works</i>						
B00A - R2002 - Cleaning Store - Distributed (1.38 m2)						
No Asbestos						
B00A - R2003 - Preparation (45.87 m2)						
Floor Coverings Res/Textile	Vinyl Tiles					
	8532/B00A/R0014/Floor Coverings Res/Textile/S3					No Asbestos Detected
Ceiling Structures/Linings	Vermiculite					
	8532/B00E/R0015/Ceiling Structures/Linings/S29					Limited Samples Taken
<i>Vermiculite Ceilings may contain asbestos. Asbestos testing MUST be conducted prior to any disturbance works</i>						
B00A - R2004 - Distribution Board Cupboard (0.97 m2)						
Note: No inspection of live electrical installation.						
Electrical Mounting Board	Resinous Board	2Unit	Throughout	Good Condition (1)	Low (1)	Low Priority (2-3)
	8532/B0B1/R0003/Electrical Mounting Board/S24					Chrysotile (white asbestos)
B00A - R2005 - Laboratory L.S. (91.94 m2)						

Product	Material Description	Extent	Location Reference	Material Condition	Risk Status	Control Priority
Sample No					Test Result	
Floor Coverings Res/Textile	Vinyl Tiles					
	8532/B00A/R0014/Floor Coverings Res/Textile/S3					No Asbestos Detected
Ceiling Structures/Linings	Vermiculite					
	8532/B00E/R0015/Ceiling Structures/Linings/S29					Limited Samples Taken
<i>Vermiculite Ceilings may contain asbestos. Asbestos testing MUST be conducted prior to any disturbance works</i>						
B00A - R2006 - Dust Extraction Space (0.78 m2)						
No Asbestos						
B00A - R2007 - Growing/Breeding (20.18 m2)						
Floor Coverings Res/Textile	Vinyl Tiles					
	8532/B00A/R0014/Floor Coverings Res/Textile/S3					No Asbestos Detected
Ceiling Structures/Linings	Vermiculite					
	8532/B00E/R0015/Ceiling Structures/Linings/S29					Limited Samples Taken
<i>Vermiculite Ceilings may contain asbestos. Asbestos testing MUST be conducted prior to any disturbance works</i>						
B00A - R2008 - Staff - Toilet (2.05 m2)						
Ceiling Structures/Linings	Vermiculite					
	8532/B00E/R0015/Ceiling Structures/Linings/S29					Limited Samples Taken
<i>Vermiculite Ceilings may contain asbestos. Asbestos testing MUST be conducted prior to any disturbance works</i>						
B00A - R2009 - Staff - Toilet (2.05 m2)						
Ceiling Structures/Linings	Vermiculite					
	8532/B00E/R0015/Ceiling Structures/Linings/S29					Limited Samples Taken
<i>Vermiculite Ceilings may contain asbestos. Asbestos testing MUST be conducted prior to any disturbance works</i>						
B00A - R2010 - Movement (21.03 m2)						
Ceiling Structures/Linings	Vermiculite					
	8532/B00E/R0015/Ceiling Structures/Linings/S29					Limited Samples Taken
<i>Vermiculite Ceilings may contain asbestos. Asbestos testing MUST be conducted prior to any disturbance works</i>						
B00A - R2011 - Stairs (6.43 m2)						
Recently Modified Space	Requires Inspection					

2017

Product	Material Description	Extent	Location Reference	Material Condition	Risk Status	Control Priority
Sample No					Test Result	

B00C - Multi Purpose Facilities - 1976 - Brick/Block (Brick/Block)**Exterior**

Ceiling Voids - Flat Roof	Non Accessible Area - Area inaccessible					
Telecommunication pit	Moulded fibre cement	1Unit	North	Good Condition (1)	Low (1)	Low Priority (2-3)
	8532/B00C/Telecommunication pit/S20				Chrysotile (white asbestos) , Amosite (brown asbestos)	
Underfloor Voids - Slab on Ground	Non Accessible Area - Area inaccessible					

Interior**B00C - R0001 - Canteen (48.22 m2)**

No Asbestos

B00C - R0002 - Staff Toilet (4.7 m2)

No Asbestos

B00C - R0003 - Office/Store (4.98 m2)

No Asbestos

B00C - R0004 - Chair Store (18.55 m2)

No Asbestos

B00C - R0005 - Main Switchroom (8.97 m2)

Electrical Mounting Board	Resinous Board	3Unit	South & East	Good Condition (1)	Low (1)	Low Priority (2-3)
	8532/B00C/R0005/Electrical Mounting Board/S21				Chrysotile (white asbestos)	
Sheet Lining	Compressed AC Sheet	2m2	South	Good Condition (1)	Low (1)	Low Priority (2-3)
	8532/B00C/R0005/Sheet Lining/S22				Chrysotile (white asbestos)	

B00C - R0006 - Garden Store Room (11.11 m2)

No Asbestos

B00C - R0007 - Multi-Purpose Space (466.25 m2)

Ceiling Structures/Linings	Vermiculite					
	8532/B00D/R1017/Ceiling Structures/Linings/S15				Limited Samples Taken	
Vermiculite Ceilings may contain asbestos. Asbestos testing MUST be conducted prior to any disturbance works						

B00C - R0008 - Shower/Change (71.66 m2)

Partition Walls (Cubicles)	Compressed AC Sheet	4m2	Throughout	Good Condition (1)	Low (1)	Low Priority (2-3)
	8532/B00C/R0016/Partition Walls (Cubicles)/S2				Chrysotile (white asbestos) , Amosite (brown asbestos)	

B00C - R0009 - General Storeroom (3.67 m2)

Flue	Moulded fibre cement	4m	East	Good Condition (1)	Low (1)	Low Priority (2-3)
	8532/B00C/R0009/Flue/S23				Chrysotile (white asbestos) , Amosite (brown asbestos)	

B00C - R0010 - Staff Study (12.4 m2)

Floor Coverings Res/Textile	Vinyl Tiles					
	8532/B00D/R0004/Floor Coverings Res/Textile/S4				No Asbestos Detected	

B00C - R0011 - Sport Equipment Store (54.73 m2)

No Asbestos

B00C - R0012 - Secure Storeroom (5.99 m2)

No Asbestos

B00C - R0013 - Staff Shower (11.49 m2)

No Asbestos

B00C - R0014 - Movement (14.65 m2)

Product	Material Description	Extent	Location Reference	Material Condition	Risk Status	Control Priority
Sample No					Test Result	
No Asbestos						
B00C - R0015 - Movement (14.65 m2)						
No Asbestos						
B00C - R0016 - Shower/Change (61.19 m2)						
Partition Walls (Cubicles)	Compressed AC Sheet	16m2	Throughout	Good Condition (1)	Low (1)	Low Priority (2-3)
8532/B00C/R0016/Partition Walls (Cubicles)/S2				Chrysotile (white asbestos) , Amosite (brown asbestos)		
B00C - R0017 - Cleaning Distributed Store (2.45 m2)						
Flue	Moulded fibre cement	4m	East	Good Condition (1)	Low (1)	Low Priority (2-3)
8532/B00C/R0009/Flue/S23				Chrysotile (white asbestos) , Amosite (brown asbestos)		
B00C - R0018 - Movement (115.79 m2)						
No Asbestos						
B00C - R0019 - Movement (6.61 m2)						
No Asbestos						
B00C - R0020 - Movement (4.06 m2)						
No Asbestos						
B00C - R0021 - Movement (5.12 m2)						
No Asbestos						
B00C - R0022 - Movement (4.92 m2)						
No Asbestos						
B00C - R0023 - Movement (4.92 m2)						
No Asbestos						
B00C - R0024 - Movement (4.92 m2)						
No Asbestos						
B00C - R0025 - Covered Area (9.93 m2)						
No Asbestos						
B00C - R0026 - Movement (3.05 m2)						
No Asbestos						
B00C - R0027 - Movement (3.06 m2)						
No Asbestos						
B00C - R0028 - No Access (100.83 m2)						
No Asbestos						
B00C - R1001 - Toilets-Girls (23.34 m2)						
Partition Walls (Cubicles)	Compressed AC Sheet	8m2	Throughout	Good Condition (1)	Low (1)	Low Priority (2-3)
8532/B00C/R0016/Partition Walls (Cubicles)/S2				Chrysotile (white asbestos) , Amosite (brown asbestos)		
Ceiling Structures/Linings	Vermiculite	8532/B00D/R1017/Ceiling Structures/Linings/S15		Limited Samples Taken		
Vermiculite Ceilings may contain asbestos. Asbestos testing MUST be conducted prior to any disturbance works						
B00C - R1002 - Cleaning Store - Distributed (6.29 m2)						
Ceiling Structures/Linings	Vermiculite	8532/B00D/R1017/Ceiling Structures/Linings/S15		Limited Samples Taken		
Vermiculite Ceilings may contain asbestos. Asbestos testing MUST be conducted prior to any disturbance works						
B00C - R1003 - Staff - Toilet (2.11 m2)						
Ceiling Structures/Linings	Vermiculite	8532/B00D/R1017/Ceiling Structures/Linings/S15		Limited Samples Taken		
Vermiculite Ceilings may contain asbestos. Asbestos testing MUST be conducted prior to any disturbance works						
B00C - R1004 - Staff Shower (1.87 m2)						

Product	Material Description	Extent	Location Reference	Material Condition	Risk Status	Control Priority
Sample No					Test Result	
Ceiling Structures/Linings	Vermiculite		8532/B00D/R1017/Ceiling Structures/Linings/S15			Limited Samples Taken
<i>Vermiculite Ceilings may contain asbestos. Asbestos testing MUST be conducted prior to any disturbance works</i>						
B00C - R1005 - Staff Shower (1.98 m2)						
Ceiling Structures/Linings	Vermiculite		8532/B00D/R1017/Ceiling Structures/Linings/S15			Limited Samples Taken
<i>Vermiculite Ceilings may contain asbestos. Asbestos testing MUST be conducted prior to any disturbance works</i>						
B00C - R1006 - Cleaning Supplies Store (12.46 m2)						
Floor Coverings Res/Textile	Vinyl Tiles		8532/B00D/R0004/Floor Coverings Res/Textile/S4			No Asbestos Detected
B00C - R1007 - Staff Study (26.2 m2)						
Floor Coverings Res/Textile	Vinyl Tiles		8532/B00D/R0004/Floor Coverings Res/Textile/S4			No Asbestos Detected
B00C - R1008 - Movement (17.2 m2)						
No Asbestos						

2017

Product	Material Description	Extent	Location Reference	Material Condition	Risk Status	Control Priority
Sample No					Test Result	

B00D - Administration - 1986 - Brick/Block (Brick/Block)**Exterior**

Ceiling Voids - Flat Roof	Non Accessible Area - Area inaccessible					
Underfloor Voids	Flat AC Sheeting	20m2	Southwest corner	Minimal Damage (2)	Low (1)	Low Priority (2-3)
	8532/B00D/Underfloor Voids/S18					Chrysotile (white asbestos)

Interior**B00D - R0001 - General Storeroom (33.56 m2)**

Ceiling Structures/Linings	Vermiculite 8532/B00D/R1017/Ceiling Structures/Linings/S15					Limited Samples Taken <i>Vermiculite Ceilings may contain asbestos. Asbestos testing MUST be conducted prior to any disturbance works</i>
Floor Coverings Res/Textile	Vinyl Tiles 8532/B00D/R0004/Floor Coverings Res/Textile/S4					No Asbestos Detected

B00D - R0002 - Cleaning Supplies Store (10.24 m2)

Ceiling Structures/Linings	Vermiculite 8532/B00D/R1017/Ceiling Structures/Linings/S15					Limited Samples Taken <i>Vermiculite Ceilings may contain asbestos. Asbestos testing MUST be conducted prior to any disturbance works</i>
Floor Coverings Res/Textile	Vinyl Tiles 8532/B00D/R0004/Floor Coverings Res/Textile/S4					No Asbestos Detected

B00D - R0003 - General Assistants (17.73 m2)

Ceiling Structures/Linings	Vermiculite 8532/B00D/R1017/Ceiling Structures/Linings/S15					Limited Samples Taken <i>Vermiculite Ceilings may contain asbestos. Asbestos testing MUST be conducted prior to any disturbance works</i>
Floor Coverings Res/Textile	Vinyl Tiles 8532/B00D/R0004/Floor Coverings Res/Textile/S4					No Asbestos Detected

B00D - R0004 - Movement (12.71 m2)

Ceiling Structures/Linings	Vermiculite 8532/B00D/R1017/Ceiling Structures/Linings/S15					Limited Samples Taken <i>Vermiculite Ceilings may contain asbestos. Asbestos testing MUST be conducted prior to any disturbance works</i>
Floor Coverings Res/Textile	Vinyl Tiles 8532/B00D/R0004/Floor Coverings Res/Textile/S4					No Asbestos Detected

B00D - R0005 - Movement (17.19 m2)

No Asbestos

B00D - R1001 - General Storeroom (6.69 m2)

No Asbestos

B00D - R1002 - Principal Office (22.33 m2)

No Asbestos

B00D - R1003 - Deputy Principal Office (13.79 m2)

Ceiling Structures/Linings	Vermiculite 8532/B00D/R1017/Ceiling Structures/Linings/S15					Limited Samples Taken <i>Vermiculite Ceilings may contain asbestos. Asbestos testing MUST be conducted prior to any disturbance works</i>
----------------------------	---	--	--	--	--	---

B00D - R1004 - Leading Teacher (10.08 m2)

Ceiling Structures/Linings	Vermiculite 8532/B00D/R1017/Ceiling Structures/Linings/S15					Limited Samples Taken <i>Vermiculite Ceilings may contain asbestos. Asbestos testing MUST be conducted prior to any disturbance works</i>
----------------------------	---	--	--	--	--	---

B00D - R1005 - Staff - Toilet (3.1 m2)

Ceiling Structures/Linings	Vermiculite 8532/B00D/R1017/Ceiling Structures/Linings/S15					Limited Samples Taken <i>Vermiculite Ceilings may contain asbestos. Asbestos testing MUST be conducted prior to any disturbance works</i>
----------------------------	---	--	--	--	--	---

Product	Material Description	Extent	Location Reference	Material Condition	Risk Status	Control Priority
Sample No					Test Result	
B00D - R1006 - Staff - Toilet (3.83 m2)						
Ceiling Structures/Linings	Vermiculite					
	8532/B00D/R1017/Ceiling Structures/Linings/S15					Limited Samples Taken
<i>Vermiculite Ceilings may contain asbestos. Asbestos testing MUST be conducted prior to any disturbance works</i>						
B00D - R1007 - Cleaning Store - Distributed (0.41 m2)						
No Asbestos						
B00D - R1008 - Distribution Board Cupboard (0.76 m2)						
					Note: No inspection of live electrical installation.	
Electrical Mounting Board	Resinous Board	2Unit	Throughout	Good Condition (1)	Low (1)	Low Priority (2-3)
	8532/B00D/R1008/Electrical Mounting Board/S17					Chrysotile (white asbestos)
B00D - R1010 - Administration - Clerical (26.58 m2)						
Ceiling Structures/Linings	Vermiculite					
	8532/B00D/R1017/Ceiling Structures/Linings/S15					Limited Samples Taken
<i>Vermiculite Ceilings may contain asbestos. Asbestos testing MUST be conducted prior to any disturbance works</i>						
B00D - R1011 - Duplicating Workroom (20.03 m2)						
Ceiling Structures/Linings	Vermiculite					
	8532/B00D/R1017/Ceiling Structures/Linings/S15					Limited Samples Taken
<i>Vermiculite Ceilings may contain asbestos. Asbestos testing MUST be conducted prior to any disturbance works</i>						
B00D - R1012 - Ancillary Staff (22.06 m2)						
Ceiling Structures/Linings	Vermiculite					
	8532/B00D/R1017/Ceiling Structures/Linings/S15					Limited Samples Taken
<i>Vermiculite Ceilings may contain asbestos. Asbestos testing MUST be conducted prior to any disturbance works</i>						
B00D - R1014 - Movement (41.99 m2)						
No Asbestos						
B00D - R1016 - Administration - Clerical (12.06 m2)						
Floor Coverings Res/Textile	Vinyl Tiles (Under Floor Covering/Carpet)					
	8532/B00D/R1016/Floor Coverings Res/Textile/S16					No Asbestos Detected
Floor Coverings Res/Textile	Adhesive					
	8532/B00D/R1016/Floor Coverings Res/Textile/S19					No Asbestos Detected
B00D - R1018 - Stairs (4.03 m2)						
No Asbestos						
B00D - R1019 - Movement (55.65 m2)						
Recently Modified Space	Requires Inspection					
B00D - R1020 - Staff Study (9.28 m2)						
Recently Modified Space	Requires Inspection					
B00D - R2001 - Interview/Office - Type 1 (12.15 m2)						
Ceiling Structures/Linings	Vermiculite					
	8532/B00D/R1017/Ceiling Structures/Linings/S15					Limited Samples Taken
<i>Vermiculite Ceilings may contain asbestos. Asbestos testing MUST be conducted prior to any disturbance works</i>						
B00D - R2002 - Interview/Office - Type 1 (11.64 m2)						
Ceiling Structures/Linings	Vermiculite					
	8532/B00D/R1017/Ceiling Structures/Linings/S15					Limited Samples Taken
<i>Vermiculite Ceilings may contain asbestos. Asbestos testing MUST be conducted prior to any disturbance works</i>						
B00D - R2003 - Clinic-Toilets (3.41 m2)						
Ceiling Structures/Linings	Vermiculite					
	8532/B00D/R1017/Ceiling Structures/Linings/S15					Limited Samples Taken
<i>Vermiculite Ceilings may contain asbestos. Asbestos testing MUST be conducted prior to any disturbance works</i>						
B00D - R2004 - Clinic - Girls (13.11 m2)						
Ceiling Structures/Linings	Vermiculite					
	8532/B00D/R1017/Ceiling Structures/Linings/S15					Limited Samples Taken
<i>Vermiculite Ceilings may contain asbestos. Asbestos testing MUST be conducted prior to any disturbance works</i>						
B00D - R2005 - Clinic - Boys (7.89 m2)						

Product	Material Description	Extent	Location Reference	Material Condition	Risk Status	Control Priority
Sample No					Test Result	
Ceiling Structures/Linings	Vermiculite		8532/B00D/R1017/Ceiling Structures/Linings/S15			Limited Samples Taken
<i>Vermiculite Ceilings may contain asbestos. Asbestos testing MUST be conducted prior to any disturbance works</i>						
B00D - R2006 - Commonroom (112.16 m2)						
Ceiling Structures/Linings	Vermiculite		8532/B00D/R1017/Ceiling Structures/Linings/S15			Limited Samples Taken
<i>Vermiculite Ceilings may contain asbestos. Asbestos testing MUST be conducted prior to any disturbance works</i>						
Floor Coverings Res/Textile	Vinyl Tiles		8532/B00D/R0004/Floor Coverings Res/Textile/S4			No Asbestos Detected
B00D - R2007 - Movement (20.71 m2)						
Ceiling Structures/Linings	Vermiculite		8532/B00D/R1017/Ceiling Structures/Linings/S15			Limited Samples Taken
<i>Vermiculite Ceilings may contain asbestos. Asbestos testing MUST be conducted prior to any disturbance works</i>						
B00D - R2008 - Staff - Toilet (3.28 m2)						
Ceiling Structures/Linings	Vermiculite		8532/B00D/R1017/Ceiling Structures/Linings/S15			Limited Samples Taken
<i>Vermiculite Ceilings may contain asbestos. Asbestos testing MUST be conducted prior to any disturbance works</i>						
B00D - R2009 - Staff - Toilet (3.74 m2)						
Ceiling Structures/Linings	Vermiculite		8532/B00D/R1017/Ceiling Structures/Linings/S15			Limited Samples Taken
<i>Vermiculite Ceilings may contain asbestos. Asbestos testing MUST be conducted prior to any disturbance works</i>						
B00D - R2010 - Cleaning Store - Distributed (0.41 m2)						
No Asbestos						
B00D - R2011 - Distribution Board Cupboard (0.73 m2) Note: No inspection of live electrical installation.						
Electrical Mounting Board	Resinous Board	2Unit	Throughout	Good Condition (1)	Low (1)	Low Priority (2-3)
8532/B00D/R1008/Electrical Mounting Board/S17						Chrysotile (white asbestos)
B00D - R2012 - Movement (3.94 m2)						
Ceiling Structures/Linings	Vermiculite		8532/B00D/R1017/Ceiling Structures/Linings/S15			Limited Samples Taken
<i>Vermiculite Ceilings may contain asbestos. Asbestos testing MUST be conducted prior to any disturbance works</i>						
Floor Coverings Res/Textile	Vinyl Tiles		8532/B00D/R0004/Floor Coverings Res/Textile/S4			No Asbestos Detected
B00D - R2013 - Movement (29.93 m2)						
No Asbestos						
B00D - R2014 - Movement (11.87 m2)						
No Asbestos						
B00D - R2015 - Stairs (8.98 m2)						
No Asbestos						



Product	Material Description	Extent	Location Reference	Material Condition	Risk Status	Control Priority
Sample No					Test Result	

B00E - Library - 1976 - Brick/Block (Brick/Block)

Exterior

Ceiling Voids - Flat Roof	Non Accessible Area - Area inaccessible
Underfloor Voids - Slab on Ground	Non Accessible Area - Area inaccessible

Interior

B00E - M0002 - Stairs (4.01 m2)

Ceiling Structures/Linings	Vermiculite 8532/B00E/R0015/Ceiling Structures/Linings/S29	Limited Samples Taken
<i>Vermiculite Ceilings may contain asbestos. Asbestos testing MUST be conducted prior to any disturbance works</i>		

B00E - M0003 - Stairs (3.81 m2)

Ceiling Structures/Linings	Vermiculite 8532/B00E/R0015/Ceiling Structures/Linings/S29	Limited Samples Taken
<i>Vermiculite Ceilings may contain asbestos. Asbestos testing MUST be conducted prior to any disturbance works</i>		

B00E - M0004 - Computer Room (42.39 m2)

Ceiling Structures/Linings	Vermiculite 8532/B00E/R0015/Ceiling Structures/Linings/S29	Limited Samples Taken
<i>Vermiculite Ceilings may contain asbestos. Asbestos testing MUST be conducted prior to any disturbance works</i>		

B00E - M0005 - Study Space (29.4 m2)

Ceiling Structures/Linings	Vermiculite 8532/B00E/R0015/Ceiling Structures/Linings/S29	Limited Samples Taken
<i>Vermiculite Ceilings may contain asbestos. Asbestos testing MUST be conducted prior to any disturbance works</i>		

B00E - M0006 - Study Space (112.35 m2)

Ceiling Structures/Linings	Vermiculite 8532/B00E/R0015/Ceiling Structures/Linings/S29	Limited Samples Taken
<i>Vermiculite Ceilings may contain asbestos. Asbestos testing MUST be conducted prior to any disturbance works</i>		

B00E - R0001 - Computer Resource (15.8 m2)

Ceiling Structures/Linings	Vermiculite 8532/B00E/R0015/Ceiling Structures/Linings/S29	Limited Samples Taken
<i>Vermiculite Ceilings may contain asbestos. Asbestos testing MUST be conducted prior to any disturbance works</i>		

B00E - R0002 - Audio Visual Workroom (16.05 m2)

Ceiling Structures/Linings	Vermiculite 8532/B00E/R0015/Ceiling Structures/Linings/S29	Limited Samples Taken
<i>Vermiculite Ceilings may contain asbestos. Asbestos testing MUST be conducted prior to any disturbance works</i>		

B00E - R0003 - Seminar (16.17 m2)

Ceiling Structures/Linings	Vermiculite 8532/B00E/R0015/Ceiling Structures/Linings/S29	Limited Samples Taken
<i>Vermiculite Ceilings may contain asbestos. Asbestos testing MUST be conducted prior to any disturbance works</i>		

B00E - R0004 - Seminar (15.8 m2)

Ceiling Structures/Linings	Vermiculite 8532/B00E/R0015/Ceiling Structures/Linings/S29	Limited Samples Taken
<i>Vermiculite Ceilings may contain asbestos. Asbestos testing MUST be conducted prior to any disturbance works</i>		

B00E - R0005 - Main Area (189 m2)

Ceiling Structures/Linings	Vermiculite 8532/B00E/R0015/Ceiling Structures/Linings/S29	Limited Samples Taken
<i>Vermiculite Ceilings may contain asbestos. Asbestos testing MUST be conducted prior to any disturbance works</i>		

B00E - R0006 - General Storeroom (3.64 m2)

No Asbestos

B00E - R0007 - Workroom (30.73 m2)

Ceiling Structures/Linings	Vermiculite 8532/B00E/R0015/Ceiling Structures/Linings/S29	Limited Samples Taken
<i>Vermiculite Ceilings may contain asbestos. Asbestos testing MUST be conducted prior to any disturbance works</i>		

Product	Material Description	Extent	Location Reference	Material Condition	Risk Status	Control Priority
Sample No					Test Result	
B00E - R0008 - Librarian (8.94 m2)						
Ceiling Structures/Linings	Vermiculite					
	8532/B00E/R0015/Ceiling Structures/Linings/S29					Limited Samples Taken
<i>Vermiculite Ceilings may contain asbestos. Asbestos testing MUST be conducted prior to any disturbance works</i>						
B00E - R0009 - Workroom (23.46 m2)						
Ceiling Structures/Linings	Vermiculite					
	8532/B00E/R0015/Ceiling Structures/Linings/S29					Limited Samples Taken
<i>Vermiculite Ceilings may contain asbestos. Asbestos testing MUST be conducted prior to any disturbance works</i>						
B00E - R0010 - Staff - Toilet (4.27 m2)						
No Asbestos						
B00E - R0011 - Main Area (124.73 m2)						
Ceiling Structures/Linings	Vermiculite					
	8532/B00E/R0015/Ceiling Structures/Linings/S29					Limited Samples Taken
<i>Vermiculite Ceilings may contain asbestos. Asbestos testing MUST be conducted prior to any disturbance works</i>						
B00E - R0012 - Distribution Board Cupboard (0.69 m2)						
Note: No inspection of live electrical installation.						
Electrical Mounting Board	Resinous Board	2Unit	Throughout	Good Condition (1)	Low (1)	Low Priority (2-3)
	8532/B0B1/R0003/Electrical Mounting Board/S24					Chrysotile (white asbestos)
B00E - R0013 - Staff - Toilet (4.23 m2)						
No Asbestos						
B00E - R0014 - Distribution Board Cupboard (0.76 m2)						
Note: No inspection of live electrical installation.						
Electrical Mounting Board	Resinous Board	21Unit	Throughout	Good Condition (1)	Low (1)	Low Priority (2-3)
	8532/B0B1/R0003/Electrical Mounting Board/S24					Chrysotile (white asbestos)
Ceiling Structures/Linings	Flat AC Sheeting	2m2	Throughout	Good Condition (1)	Low (1)	Low Priority (2-3)
	8532/B0B1/R0003/Ceiling Structures/Linings/S25					Chrysotile (white asbestos)
B00E - R0015 - Movement (13 m2)						
Ceiling Structures/Linings	Vermiculite					
	8532/B00E/R0015/Ceiling Structures/Linings/S29					Limited Samples Taken
<i>Vermiculite Ceilings may contain asbestos. Asbestos testing MUST be conducted prior to any disturbance works</i>						
B00E - R0017 - Movement (4.36 m2)						
No Asbestos						
B00E - R0018 - Movement (85.33 m2)						
Ceiling Structures/Linings	Vermiculite					
	8532/B00E/R0015/Ceiling Structures/Linings/S29					Limited Samples Taken
<i>Vermiculite Ceilings may contain asbestos. Asbestos testing MUST be conducted prior to any disturbance works</i>						
B00E - R0019 - Stairs (0.34 m2)						
Ceiling Structures/Linings	Vermiculite					
	8532/B00E/R0015/Ceiling Structures/Linings/S29					Limited Samples Taken
<i>Vermiculite Ceilings may contain asbestos. Asbestos testing MUST be conducted prior to any disturbance works</i>						
B00E - R0020 - Stairs (4.12 m2)						
Ceiling Structures/Linings	Vermiculite					
	8532/B00E/R0015/Ceiling Structures/Linings/S29					Limited Samples Taken
<i>Vermiculite Ceilings may contain asbestos. Asbestos testing MUST be conducted prior to any disturbance works</i>						
B00E - R1002 - Staff Study (14.36 m2)						
Ceiling Structures/Linings	Vermiculite					
	8532/B00E/R0015/Ceiling Structures/Linings/S29					Limited Samples Taken
<i>Vermiculite Ceilings may contain asbestos. Asbestos testing MUST be conducted prior to any disturbance works</i>						
B00E - R1003 - General Storeroom (14.36 m2)						
Ceiling Structures/Linings	Vermiculite					
	8532/B00E/R0015/Ceiling Structures/Linings/S29					Limited Samples Taken
<i>Vermiculite Ceilings may contain asbestos. Asbestos testing MUST be conducted prior to any disturbance works</i>						
B00E - R1004 - Staff Study (88.75 m2)						

Product	Material Description	Extent	Location Reference	Material Condition	Risk Status	Control Priority
Sample No					Test Result	
Ceiling Structures/Linings	Vermiculite					
	8532/B00E/R0015/Ceiling Structures/Linings/S29					Limited Samples Taken
<i>Vermiculite Ceilings may contain asbestos. Asbestos testing MUST be conducted prior to any disturbance works</i>						
B00E - R1005 - Toilets-Boys (28 m2)						
Partition Walls (Cubicles)	Compressed AC Sheet	10m2	Throughout	Good Condition (1)	Low (1)	Low Priority (2-3)
	8532/B00C/R0016/Partition Walls (Cubicles)/S2					Chrysotile (white asbestos) , Amosite (brown asbestos)
B00E - R1007 - Movement (81.25 m2)						
No Asbestos						

2017

Product	Material Description	Extent	Location Reference	Material Condition	Risk Status	Control Priority
Sample No					Test Result	

B00F - General Learning - 1977 - Brick/Block (Brick/Block)**Exterior**

Ceiling Voids - Flat Roof	Non Accessible Area - Area inaccessible
Underfloor Voids - Slab on Ground	Non Accessible Area - Area inaccessible

Interior**B00F - R0001 - General Learning Space (52.01 m2)**

Ceiling Structures/Linings	Vermiculite 8532/B00F/R0020/Ceiling Structures/Linings/S28	Limited Samples Taken
<i>Vermiculite Ceilings may contain asbestos. Asbestos testing MUST be conducted prior to any disturbance works</i>		

B00F - R0002 - Distribution Board Cupboard (0.71 m2)

Note: No inspection of live electrical installation.

No Asbestos

B00F - R0003 - General Learning Space (40.85 m2)

Ceiling Structures/Linings	Vermiculite 8532/B00F/R0020/Ceiling Structures/Linings/S28	Limited Samples Taken
<i>Vermiculite Ceilings may contain asbestos. Asbestos testing MUST be conducted prior to any disturbance works</i>		

B00F - R0004 - Staff Study (34.76 m2)

Ceiling Structures/Linings	Vermiculite 8532/B00F/R0020/Ceiling Structures/Linings/S28	Limited Samples Taken
<i>Vermiculite Ceilings may contain asbestos. Asbestos testing MUST be conducted prior to any disturbance works</i>		

B00F - R0005 - General Learning Space (52.07 m2)

Ceiling Structures/Linings	Vermiculite 8532/B00F/R0020/Ceiling Structures/Linings/S28	Limited Samples Taken
<i>Vermiculite Ceilings may contain asbestos. Asbestos testing MUST be conducted prior to any disturbance works</i>		

B00F - R0006 - General Learning Space (57.93 m2)

Ceiling Structures/Linings	Vermiculite 8532/B00F/R0020/Ceiling Structures/Linings/S28	Limited Samples Taken
<i>Vermiculite Ceilings may contain asbestos. Asbestos testing MUST be conducted prior to any disturbance works</i>		

B00F - R0007 - General Learning Space (52.01 m2)

Ceiling Structures/Linings	Vermiculite 8532/B00F/R0020/Ceiling Structures/Linings/S28	Limited Samples Taken
<i>Vermiculite Ceilings may contain asbestos. Asbestos testing MUST be conducted prior to any disturbance works</i>		

B00F - R0008 - General Storeroom (15.53 m2)

Ceiling Structures/Linings	Vermiculite 8532/B00F/R0020/Ceiling Structures/Linings/S28	Limited Samples Taken
<i>Vermiculite Ceilings may contain asbestos. Asbestos testing MUST be conducted prior to any disturbance works</i>		

B00F - R0009 - General Storeroom (5.48 m2)

No Asbestos

B00F - R0010 - Toilets-Boys (16.78 m2)

No Asbestos

B00F - R0011 - Cleaning Store - Distributed (1.78 m2)

No Asbestos

B00F - R0012 - Staff - Toilet (4.23 m2)

No Asbestos

B00F - R0013 - General Storeroom (4.65 m2)

No Asbestos

B00F - R0014 - Careers Advisers Office (26.03 m2)

Ceiling Structures/Linings	Vermiculite 8532/B00F/R0020/Ceiling Structures/Linings/S28	Limited Samples Taken
<i>Vermiculite Ceilings may contain asbestos. Asbestos testing MUST be conducted prior to any disturbance works</i>		

Product	Material Description	Extent	Location Reference	Material Condition	Risk Status	Control Priority
Sample No					Test Result	
B00F - R0015 - General Storeroom (5.13 m2)						
No Asbestos						
B00F - R0016 - General Learning Space (53.16 m2)						
Ceiling Structures/Linings	Vermiculite		8532/B00F/R0020/Ceiling Structures/Linings/S28			Limited Samples Taken
<i>Vermiculite Ceilings may contain asbestos. Asbestos testing MUST be conducted prior to any disturbance works</i>						
B00F - R0017 - General Learning Space (52.21 m2)						
Ceiling Structures/Linings	Vermiculite		8532/B00F/R0020/Ceiling Structures/Linings/S28			Limited Samples Taken
<i>Vermiculite Ceilings may contain asbestos. Asbestos testing MUST be conducted prior to any disturbance works</i>						
B00F - R0018 - General Learning Space (52.44 m2)						
Ceiling Structures/Linings	Vermiculite		8532/B00F/R0020/Ceiling Structures/Linings/S28			Limited Samples Taken
<i>Vermiculite Ceilings may contain asbestos. Asbestos testing MUST be conducted prior to any disturbance works</i>						
B00F - R0019 - General Learning Space (51.86 m2)						
Ceiling Structures/Linings	Vermiculite		8532/B00F/R0020/Ceiling Structures/Linings/S28			Limited Samples Taken
<i>Vermiculite Ceilings may contain asbestos. Asbestos testing MUST be conducted prior to any disturbance works</i>						
B00F - R0020 - Movement (178.15 m2)						
Ceiling Structures/Linings	Vermiculite		8532/B00F/R0020/Ceiling Structures/Linings/S28			Limited Samples Taken
<i>Vermiculite Ceilings may contain asbestos. Asbestos testing MUST be conducted prior to any disturbance works</i>						
B00F - R0021 - Movement (20.61 m2)						
No Asbestos						
B00F - R0022 - No Access (5.14 m2)						
No Asbestos						
B00F - R0023 - Stairs (9.42 m2)						
Ceiling Structures/Linings	Vermiculite		8532/B00F/R0020/Ceiling Structures/Linings/S28			Limited Samples Taken
<i>Vermiculite Ceilings may contain asbestos. Asbestos testing MUST be conducted prior to any disturbance works</i>						
B00F - R0024 - Stairs (10.88 m2)						
Ceiling Structures/Linings	Vermiculite		8532/B00F/R0020/Ceiling Structures/Linings/S28			Limited Samples Taken
<i>Vermiculite Ceilings may contain asbestos. Asbestos testing MUST be conducted prior to any disturbance works</i>						
B00F - R1001 - General Learning Space (52.01 m2)						
Ceiling Structures/Linings	Vermiculite		8532/B00F/R0020/Ceiling Structures/Linings/S28			Limited Samples Taken
<i>Vermiculite Ceilings may contain asbestos. Asbestos testing MUST be conducted prior to any disturbance works</i>						
B00F - R1002 - General Learning Space (40.56 m2)						
Ceiling Structures/Linings	Vermiculite		8532/B00F/R0020/Ceiling Structures/Linings/S28			Limited Samples Taken
<i>Vermiculite Ceilings may contain asbestos. Asbestos testing MUST be conducted prior to any disturbance works</i>						
B00F - R1003 - Staff Study (34.76 m2)						
Ceiling Structures/Linings	Vermiculite		8532/B00F/R0020/Ceiling Structures/Linings/S28			Limited Samples Taken
<i>Vermiculite Ceilings may contain asbestos. Asbestos testing MUST be conducted prior to any disturbance works</i>						
B00F - R1004 - Computer Learning Space (52.23 m2)						
Ceiling Structures/Linings	Vermiculite		8532/B00F/R0020/Ceiling Structures/Linings/S28			Limited Samples Taken
<i>Vermiculite Ceilings may contain asbestos. Asbestos testing MUST be conducted prior to any disturbance works</i>						
B00F - R1005 - Computer Learning Space (57.94 m2)						
Ceiling Structures/Linings	Vermiculite		8532/B00F/R0020/Ceiling Structures/Linings/S28			Limited Samples Taken
<i>Vermiculite Ceilings may contain asbestos. Asbestos testing MUST be conducted prior to any disturbance works</i>						

Product	Material Description	Extent	Location Reference	Material Condition	Risk Status	Control Priority
Sample No					Test Result	
B00F - R1006 - General Learning Space (51.93 m2)						
Ceiling Structures/Linings	Vermiculite	8532/B00F/R0020/Ceiling Structures/Linings/S28				Limited Samples Taken
<i>Vermiculite Ceilings may contain asbestos. Asbestos testing MUST be conducted prior to any disturbance works</i>						
B00F - R1007 - Interview/Office - Type 1 (15.29 m2)						
Ceiling Structures/Linings	Vermiculite	8532/B00F/R0020/Ceiling Structures/Linings/S28				Limited Samples Taken
<i>Vermiculite Ceilings may contain asbestos. Asbestos testing MUST be conducted prior to any disturbance works</i>						
B00F - R1008 - Toilets-Girls (16.76 m2)						
No Asbestos						
B00F - R1009 - Cleaning Store - Distributed (1.79 m2)						
No Asbestos						
B00F - R1010 - Staff - Toilet (4.25 m2)						
No Asbestos						
B00F - R1011 - General Storeroom (4.68 m2)						
No Asbestos						
B00F - R1012 - General Storeroom (26.01 m2)						
Ceiling Structures/Linings	Vermiculite	8532/B00F/R0020/Ceiling Structures/Linings/S28				Limited Samples Taken
<i>Vermiculite Ceilings may contain asbestos. Asbestos testing MUST be conducted prior to any disturbance works</i>						
B00F - R1013 - General Learning Space (53.16 m2)						
Ceiling Structures/Linings	Vermiculite	8532/B00F/R0020/Ceiling Structures/Linings/S28				Limited Samples Taken
<i>Vermiculite Ceilings may contain asbestos. Asbestos testing MUST be conducted prior to any disturbance works</i>						
B00F - R1014 - General Learning Space (52.01 m2)						
Ceiling Structures/Linings	Vermiculite	8532/B00F/R0020/Ceiling Structures/Linings/S28				Limited Samples Taken
<i>Vermiculite Ceilings may contain asbestos. Asbestos testing MUST be conducted prior to any disturbance works</i>						
B00F - R1015 - General Learning Space (51.86 m2)						
Ceiling Structures/Linings	Vermiculite	8532/B00F/R0020/Ceiling Structures/Linings/S28				Limited Samples Taken
<i>Vermiculite Ceilings may contain asbestos. Asbestos testing MUST be conducted prior to any disturbance works</i>						
B00F - R1016 - General Learning Space (51.79 m2)						
Ceiling Structures/Linings	Vermiculite	8532/B00F/R0020/Ceiling Structures/Linings/S28				Limited Samples Taken
<i>Vermiculite Ceilings may contain asbestos. Asbestos testing MUST be conducted prior to any disturbance works</i>						
B00F - R1017 - Distribution Board Cupboard (0.64 m2)						
					Note: No inspection of live electrical installation.	
No Asbestos						
B00F - R1018 - Movement (179.88 m2)						
Ceiling Structures/Linings	Vermiculite	8532/B00F/R0020/Ceiling Structures/Linings/S28				Limited Samples Taken
<i>Vermiculite Ceilings may contain asbestos. Asbestos testing MUST be conducted prior to any disturbance works</i>						
B00F - R1019 - Movement (20.61 m2)						
No Asbestos						
B00F - R1020 - Stairs (14.56 m2)						
Ceiling Structures/Linings	Vermiculite	8532/B00F/R0020/Ceiling Structures/Linings/S28				Limited Samples Taken
<i>Vermiculite Ceilings may contain asbestos. Asbestos testing MUST be conducted prior to any disturbance works</i>						
B00F - R1021 - Stairs (15.29 m2)						
Ceiling Structures/Linings	Vermiculite	8532/B00F/R0020/Ceiling Structures/Linings/S28				Limited Samples Taken
<i>Vermiculite Ceilings may contain asbestos. Asbestos testing MUST be conducted prior to any disturbance works</i>						
B00F - R2001 - General Learning Space (52.01 m2)						

Product	Material Description	Extent	Location Reference	Material Condition	Risk Status	Control Priority
Sample No					Test Result	
Ceiling Structures/Linings	Vermiculite	8532/B00F/R0020/Ceiling Structures/Linings/S28				Limited Samples Taken
<i>Vermiculite Ceilings may contain asbestos. Asbestos testing MUST be conducted prior to any disturbance works</i>						
B00F - R2002 - Distribution Board Cupboard (0.64 m2)						
Note: No inspection of live electrical installation.						
No Asbestos						
B00F - R2003 - General Learning Space (40.58 m2)						
Ceiling Structures/Linings	Vermiculite	8532/B00F/R0020/Ceiling Structures/Linings/S28				Limited Samples Taken
<i>Vermiculite Ceilings may contain asbestos. Asbestos testing MUST be conducted prior to any disturbance works</i>						
B00F - R2004 - Staff Study (34.71 m2)						
Ceiling Structures/Linings	Vermiculite	8532/B00F/R0020/Ceiling Structures/Linings/S28				Limited Samples Taken
<i>Vermiculite Ceilings may contain asbestos. Asbestos testing MUST be conducted prior to any disturbance works</i>						
B00F - R2005 - General Learning Space (52.29 m2)						
Ceiling Structures/Linings	Vermiculite	8532/B00F/R0020/Ceiling Structures/Linings/S28				Limited Samples Taken
<i>Vermiculite Ceilings may contain asbestos. Asbestos testing MUST be conducted prior to any disturbance works</i>						
B00F - R2006 - General Learning Space (58.01 m2)						
Ceiling Structures/Linings	Vermiculite	8532/B00F/R0020/Ceiling Structures/Linings/S28				Limited Samples Taken
<i>Vermiculite Ceilings may contain asbestos. Asbestos testing MUST be conducted prior to any disturbance works</i>						
B00F - R2007 - General Learning Space (38.41 m2)						
Ceiling Structures/Linings	Vermiculite	8532/B00F/R0020/Ceiling Structures/Linings/S28				Limited Samples Taken
<i>Vermiculite Ceilings may contain asbestos. Asbestos testing MUST be conducted prior to any disturbance works</i>						
B00F - R2008 - Toilets-Boys (16.76 m2)						
No Asbestos						
B00F - R2009 - Cleaning Store - Distributed (1.78 m2)						
No Asbestos						
B00F - R2010 - Staff - Toilet (4.23 m2)						
No Asbestos						
B00F - R2011 - General Storeroom (4.61 m2)						
No Asbestos						
B00F - R2012 - General Storeroom (18.84 m2)						
Ceiling Structures/Linings	Vermiculite	8532/B00F/R0020/Ceiling Structures/Linings/S28				Limited Samples Taken
<i>Vermiculite Ceilings may contain asbestos. Asbestos testing MUST be conducted prior to any disturbance works</i>						
B00F - R2013 - General Learning Space (52.21 m2)						
Ceiling Structures/Linings	Vermiculite	8532/B00F/R0020/Ceiling Structures/Linings/S28				Limited Samples Taken
<i>Vermiculite Ceilings may contain asbestos. Asbestos testing MUST be conducted prior to any disturbance works</i>						
B00F - R2014 - General Learning Space (52.01 m2)						
Ceiling Structures/Linings	Vermiculite	8532/B00F/R0020/Ceiling Structures/Linings/S28				Limited Samples Taken
<i>Vermiculite Ceilings may contain asbestos. Asbestos testing MUST be conducted prior to any disturbance works</i>						
B00F - R2016 - Movement (20.61 m2)						
No Asbestos						
B00F - R2017 - Stairs (14.56 m2)						
Ceiling Structures/Linings	Vermiculite	8532/B00F/R0020/Ceiling Structures/Linings/S28				Limited Samples Taken
<i>Vermiculite Ceilings may contain asbestos. Asbestos testing MUST be conducted prior to any disturbance works</i>						
B00F - R2018 - Staff Study (25.88 m2)						

Product	Material Description	Extent	Location Reference	Material Condition	Risk Status	Control Priority
Sample No					Test Result	

Ceiling Structures/Linings Vermiculite
 8532/B00F/R0020/Ceiling Structures/Linings/S28 **Limited Samples Taken**
Vermiculite Ceilings may contain asbestos. Asbestos testing MUST be conducted prior to any disturbance works

B00F - R2019 - Stairs (15.29 m2)

Ceiling Structures/Linings Vermiculite
 8532/B00F/R0020/Ceiling Structures/Linings/S28 **Limited Samples Taken**
Vermiculite Ceilings may contain asbestos. Asbestos testing MUST be conducted prior to any disturbance works

B00F - R2020 - Movement (144.54 m2)

Ceiling Structures/Linings Vermiculite
 8532/B00F/R0020/Ceiling Structures/Linings/S28 **Limited Samples Taken**
Vermiculite Ceilings may contain asbestos. Asbestos testing MUST be conducted prior to any disturbance works

2017

Product	Material Description	Extent	Location Reference	Material Condition	Risk Status	Control Priority
Sample No					Test Result	

B00G - Agricultural Science - 1986 - Timber (Timber)

Exterior

Ceiling Voids - Flat Roof	Non Accessible Area - Area inaccessible
Underfloor Voids - Slab on Ground	Non Accessible Area - Area inaccessible

Interior

B00G - R0001 - Plant Space (12.67 m2)

No Asbestos

B00G - R0006 - Machine Storage (36.01 m2)

No Asbestos

B00G - R0007 - Movement (6.96 m2)

No Asbestos

B00G - R0008 - Staff - Toilet (5.34 m2)

No Asbestos

B00G - R0009 - Staff Study (6.97 m2)

No Asbestos

B00G - R0010 - General Learning Space (51.61 m2)

No Asbestos

2017

Product	Material Description	Extent	Location Reference	Material Condition	Risk Status	Control Priority
Sample No					Test Result	

B0B1 - Technological & Applied Studies - 1976 - Brick/Block (Brick/Block)

Exterior

Ceiling Voids - Flat Roof	Non Accessible Area - Area inaccessible					
Underfloor Voids	Non Accessible Area - Non accessible					

Interior

B0B1 - R0001 - Wood Technology L.S. (176.99 m2)

Ceiling Structures/Linings	Vermiculite 8532/B00D/R1017/Ceiling Structures/Linings/S15					Limited Samples Taken
<i>Vermiculite Ceilings may contain asbestos. Asbestos testing MUST be conducted prior to any disturbance works</i>						

B0B1 - R0002 - Resource/Project Store (19.37 m2)

Ceiling Structures/Linings	Vermiculite 8532/B00D/R1017/Ceiling Structures/Linings/S15					Limited Samples Taken
<i>Vermiculite Ceilings may contain asbestos. Asbestos testing MUST be conducted prior to any disturbance works</i>						

B0B1 - R0003 - Distribution Board Cupboard (0.62 m2)

Note: No inspection of live electrical installation.

Electrical Mounting Board	Resinous Board	2Unit	North & West	Good Condition (1)	Low (1)	Low Priority (2-3)
	8532/B0B1/R0003/Electrical Mounting Board/S24					Chrysotile (white asbestos)
Ceiling Structures/Linings	Flat AC Sheeting	1m2	Throughout	Good Condition (1)	Low (1)	Low Priority (2-3)
	8532/B0B1/R0003/Ceiling Structures/Linings/S25					Chrysotile (white asbestos)

B0B1 - R0004 - Movement (48.14 m2)

No Asbestos

B0B1 - R0005 - Cleaning Supplies Store (3.72 m2)

No Asbestos

B0B1 - R0006 - Cleaning Store - Distributed (3.38 m2)

No Asbestos

B0B1 - R0007 - Movement (99.95 m2)

No Asbestos

B0B1 - R0008 - Stairs (13.06 m2)

No Asbestos

B0B1 - R0009 - Stairs (0.47 m2)

No Asbestos

B0B1 - R1001 - Music Learning Space (67.19 m2)

Ceiling Structures/Linings	Vermiculite 8532/B00D/R1017/Ceiling Structures/Linings/S15					Limited Samples Taken
<i>Vermiculite Ceilings may contain asbestos. Asbestos testing MUST be conducted prior to any disturbance works</i>						

B0B1 - R1003 - Cleaning Store - Distributed (0.96 m2)

No Asbestos

B0B1 - R1004 - Music Learning Space (62.48 m2)

Ceiling Structures/Linings	Vermiculite 8532/B00D/R1017/Ceiling Structures/Linings/S15					Limited Samples Taken
<i>Vermiculite Ceilings may contain asbestos. Asbestos testing MUST be conducted prior to any disturbance works</i>						

B0B1 - R1005 - Distribution Board Cupboard (0.65 m2)

Note: No inspection of live electrical installation.

Electrical Mounting Board	Resinous Board	2Unit	North & West	Good Condition (1)	Low (1)	Low Priority (2-3)
	8532/B0B1/R0003/Electrical Mounting Board/S24					Chrysotile (white asbestos)
Ceiling Structures/Linings	Flat AC Sheeting	2m2	Throughout	Some Damage - Unsealed (3)	Medium (2)	Medium Priority (4-5)
	8532/B0B1/R0003/Ceiling Structures/Linings/S25					Chrysotile (white asbestos)

Product	Material Description	Extent	Location Reference	Material Condition	Risk Status	Control Priority
Sample No					Test Result	
Debris	Flat AC Sheeting	2m2	Throughout	Some Damage - Unsealed (3)	Medium (2)	Medium Priority (4-5)
8532/B0B1/R0003/Ceiling Structures/Linings/S25					Chrysotile (white asbestos)	
B0B1 - R1006 - Staff Study (24.23 m2)						
Ceiling Structures/Linings	Vermiculite					Limited Samples Taken
8532/B00D/R1017/Ceiling Structures/Linings/S15					Vermiculite Ceilings may contain asbestos. Asbestos testing MUST be conducted prior to any disturbance works	
B0B1 - R1007 - General Storeroom (3.84 m2)						
Ceiling Structures/Linings	Vermiculite					Limited Samples Taken
8532/B00D/R1017/Ceiling Structures/Linings/S15					Vermiculite Ceilings may contain asbestos. Asbestos testing MUST be conducted prior to any disturbance works	
Floor Coverings Res/Textile	Vinyl Tiles					No Asbestos Detected
8532/B0B1/R1009/Floor Coverings Res/Textile/S5						
B0B1 - R1008 - Movement (46.6 m2)						
No Asbestos						
B0B1 - R1009 - Movement (2.5 m2)						
Ceiling Structures/Linings	Vermiculite					Limited Samples Taken
8532/B00D/R1017/Ceiling Structures/Linings/S15					Vermiculite Ceilings may contain asbestos. Asbestos testing MUST be conducted prior to any disturbance works	
Floor Coverings Res/Textile	Vinyl Tiles					No Asbestos Detected
8532/B0B1/R1009/Floor Coverings Res/Textile/S5						
B0B1 - R1010 - Movement (99.85 m2)						
No Asbestos						
B0B1 - R1011 - Music Learning Space (18.09 m2)						
Ceiling Structures/Linings	Vermiculite					Limited Samples Taken
8532/B00D/R1017/Ceiling Structures/Linings/S15					Vermiculite Ceilings may contain asbestos. Asbestos testing MUST be conducted prior to any disturbance works	
B0B1 - R1012 - Music Store (10.34 m2)						
Ceiling Structures/Linings	Vermiculite					Limited Samples Taken
8532/B00D/R1017/Ceiling Structures/Linings/S15					Vermiculite Ceilings may contain asbestos. Asbestos testing MUST be conducted prior to any disturbance works	
B0B1 - R1013 - Stairs (4.03 m2)						
No Asbestos						
B0B1 - R1014 - Stairs (17.31 m2)						
No Asbestos						

2017

Product	Material Description	Extent	Location Reference	Material Condition	Risk Status	Control Priority
Sample No					Test Result	

B0B2 - Technological & Applied Studies - 1976 - Brick/Block (Brick/Block)

Exterior

Ceiling Voids - Flat Roof	Non Accessible Area - Area inaccessible					
Underfloor Voids - Slab on Ground	Non Accessible Area - Area inaccessible					

Interior

B0B2 - R0001 - Metal Technology L.S. (116.59 m2)

Ceiling Structures/Linings	Vermiculite 8532/B00D/R1017/Ceiling Structures/Linings/S15					Limited Samples Taken
<i>Vermiculite Ceilings may contain asbestos. Asbestos testing MUST be conducted prior to any disturbance works</i>						

B0B2 - R0002 - Welding Area (4.58 m2)

Ceiling Structures/Linings	Vermiculite 8532/B00D/R1017/Ceiling Structures/Linings/S15					Limited Samples Taken
<i>Vermiculite Ceilings may contain asbestos. Asbestos testing MUST be conducted prior to any disturbance works</i>						

B0B2 - R0003 - Resource/Project Store (9.3 m2)

Ceiling Structures/Linings	Vermiculite 8532/B00D/R1017/Ceiling Structures/Linings/S15					Limited Samples Taken
<i>Vermiculite Ceilings may contain asbestos. Asbestos testing MUST be conducted prior to any disturbance works</i>						

B0B2 - R0004 - Distribution Board Cupboard (0.64 m2)

Note: No inspection of live electrical installation.

Electrical Mounting Board	Resinous Board	1Unit	Throughout	Good Condition (1)	Low (1)	Low Priority (2-3)
	8532/B0B1/R0003/Electrical Mounting Board/S24					Chrysotile (white asbestos)
Ceiling Structures/Linings	Flat AC Sheeting	2m2	Throughout	Some Damage - Unsealed (3)	Medium (2)	Medium Priority (4-5)
	8532/B0B1/R0003/Ceiling Structures/Linings/S25					Chrysotile (white asbestos)

B0B2 - R0005 - Staff Study (63.73 m2)

Ceiling Structures/Linings	Vermiculite 8532/B00D/R1017/Ceiling Structures/Linings/S15					Limited Samples Taken
<i>Vermiculite Ceilings may contain asbestos. Asbestos testing MUST be conducted prior to any disturbance works</i>						

B0B2 - R0006 - Materials Store (34.93 m2)

No Asbestos

B0B2 - R0007 - Movement (58.54 m2)

No Asbestos

B0B2 - R1001 - Food Technology L.S. (92.85 m2)

Ceiling Structures/Linings	Vermiculite 8532/B00D/R1017/Ceiling Structures/Linings/S15					Limited Samples Taken
<i>Vermiculite Ceilings may contain asbestos. Asbestos testing MUST be conducted prior to any disturbance works</i>						

Floor Coverings Res/Textile	Vinyl Tiles 8532/B0B2/R1002/Floor Coverings Res/Textile/S26					No Asbestos Detected
-----------------------------	--	--	--	--	--	----------------------

B0B2 - R1002 - Laundry (14.69 m2)

Ceiling Structures/Linings	Vermiculite 8532/B00D/R1017/Ceiling Structures/Linings/S15					Limited Samples Taken
<i>Vermiculite Ceilings may contain asbestos. Asbestos testing MUST be conducted prior to any disturbance works</i>						

Floor Coverings Res/Textile	Vinyl Tiles 8532/B0B2/R1002/Floor Coverings Res/Textile/S26					No Asbestos Detected
-----------------------------	--	--	--	--	--	----------------------

B0B2 - R1003 - Food/Research Space (15.34 m2)

Ceiling Structures/Linings	Vermiculite 8532/B00D/R1017/Ceiling Structures/Linings/S15					Limited Samples Taken
<i>Vermiculite Ceilings may contain asbestos. Asbestos testing MUST be conducted prior to any disturbance works</i>						

B0B2 - R1004 - Seminar/Technology Space (15.44 m2)

Product	Material Description	Extent	Location Reference	Material Condition	Risk Status	Control Priority
Sample No					Test Result	
Ceiling Structures/Linings	Vermiculite					
	8532/B00D/R1017/Ceiling Structures/Linings/S15					Limited Samples Taken
<i>Vermiculite Ceilings may contain asbestos. Asbestos testing MUST be conducted prior to any disturbance works</i>						
B0B2 - R1005 - Distribution Board Cupboard (0.64 m2)				Note: No inspection of live electrical installation.		
Electrical Mounting Board	Resinous Board	1Unit	Throughout	Some Damage - Unsealed (3)	Low (1)	Medium Priority (4-5)
	8532/B0B1/R0003/Electrical Mounting Board/S24					Chrysotile (white asbestos)
Ceiling Structures/Linings	Flat AC Sheeting	.64m2	Throughout	Some Damage - Unsealed (3)	Medium (2)	Medium Priority (4-5)
	8532/B0B1/R0003/Ceiling Structures/Linings/S25					Chrysotile (white asbestos)
Debris	Flat AC Sheeting	2m2	Throughout	Some Damage - Unsealed (3)	Medium (2)	Medium Priority (4-5)
	8532/B0B1/R0003/Ceiling Structures/Linings/S25					Chrysotile (white asbestos)
B0B2 - R1006 - Food Technology L.S. (92.67 m2)						
Ceiling Structures/Linings	Vermiculite					
	8532/B00D/R1017/Ceiling Structures/Linings/S15					Limited Samples Taken
<i>Vermiculite Ceilings may contain asbestos. Asbestos testing MUST be conducted prior to any disturbance works</i>						
Floor Coverings Res/Textile	Vinyl Tiles					
	8532/B0B2/R1002/Floor Coverings Res/Textile/S26					No Asbestos Detected
B0B2 - R1007 - Movement (58.27 m2)						
No Asbestos						

2017

Product	Material Description	Extent	Location Reference	Material Condition	Risk Status	Control Priority
Sample No					Test Result	

B0B3 - Technological & Applied Studies - 1976 - Brick/Block (Brick/Block)**Exterior**

Ceiling Voids - Flat Roof	Non Accessible Area - Area inaccessible
Underfloor Voids - Slab on Ground	Non Accessible Area - Area inaccessible

Interior**B0B3 - R0001 - Design L.S. (53.38 m2)**

Ceiling Structures/Linings	Vermiculite 8532/B00D/R1017/Ceiling Structures/Linings/S15	Limited Samples Taken
Vermiculite Ceilings may contain asbestos. Asbestos testing MUST be conducted prior to any disturbance works		

B0B3 - R0002 - Distribution Board Cupboard (0.61 m2)

Note: No inspection of live electrical installation.

Electrical Mounting Board	Resinous Board	2Unit	Throughout	Good Condition (1)	Low (1)	Low Priority (2-3)
8532/B0B1/R0003/Electrical Mounting Board/S24				Chrysotile (white asbestos)		
Ceiling Structures/Linings	Flat AC Sheeting	2m2	Throughout	Some Damage - Unsealed (3)	Medium (2)	Medium Priority (4-5)
8532/B0B1/R0003/Ceiling Structures/Linings/S25				Chrysotile (white asbestos)		

B0B3 - R0003 - Study Space (33.08 m2)

Ceiling Structures/Linings	Vermiculite 8532/B00D/R1017/Ceiling Structures/Linings/S15	Limited Samples Taken
Vermiculite Ceilings may contain asbestos. Asbestos testing MUST be conducted prior to any disturbance works		

B0B3 - R0004 - General Storeroom (19.62 m2)

Ceiling Structures/Linings	Vermiculite 8532/B00D/R1017/Ceiling Structures/Linings/S15	Limited Samples Taken
Vermiculite Ceilings may contain asbestos. Asbestos testing MUST be conducted prior to any disturbance works		
Floor Coverings Res/Textile	Vinyl Tiles 8532/B00D/R0004/Floor Coverings Res/Textile/S4	No Asbestos Detected

B0B3 - R0005 - Design L.S. (54.67 m2)

Ceiling Structures/Linings	Vermiculite 8532/B00D/R1017/Ceiling Structures/Linings/S15	Limited Samples Taken
Vermiculite Ceilings may contain asbestos. Asbestos testing MUST be conducted prior to any disturbance works		

B0B3 - R0006 - Movement (37.6 m2)

No Asbestos

B0B3 - R0007 - Storage Room

Wall Lining - Exterior	Moulded fibre cement 8532/B0B3/R0007/Wall Lining - Exterior/S27	No Asbestos Detected
Wall Linings Internal	Profiled fibre cement 8532/B0B3/R0007/Wall Lining - Exterior/S27	No Asbestos Detected

B0B3 - R1001 - Textiles Technology L.S. (72.54 m2)

Ceiling Structures/Linings	Vermiculite 8532/B00D/R1017/Ceiling Structures/Linings/S15	Limited Samples Taken
Vermiculite Ceilings may contain asbestos. Asbestos testing MUST be conducted prior to any disturbance works		

B0B3 - R1002 - Distribution Board Cupboard (0.63 m2)

Note: No inspection of live electrical installation.

Electrical Mounting Board	Resinous Board	1Unit	West	Good Condition (1)	Low (1)	Low Priority (2-3)
8532/B0B1/R0003/Electrical Mounting Board/S24				Chrysotile (white asbestos)		

B0B3 - R1003 - Cleaning Store - Distributed (0.62 m2)

Ceiling Structures/Linings	Flat AC Sheeting	1m2	Throughout	Good Condition (1)	Low (1)	Low Priority (2-3)
8532/B0B1/R0003/Ceiling Structures/Linings/S25				Chrysotile (white asbestos)		

B0B3 - R1004 - General Storeroom (8.72 m2)

Product	Material Description	Extent	Location Reference	Material Condition	Risk Status	Control Priority
Sample No					Test Result	
Ceiling Structures/Linings	Vermiculite		8532/B00D/R1017/Ceiling Structures/Linings/S15			Limited Samples Taken
<i>Vermiculite Ceilings may contain asbestos. Asbestos testing MUST be conducted prior to any disturbance works</i>						
B0B3 - R1005 - Laundry (5.8 m2)						
Ceiling Structures/Linings	Vermiculite		8532/B00D/R1017/Ceiling Structures/Linings/S15			Limited Samples Taken
<i>Vermiculite Ceilings may contain asbestos. Asbestos testing MUST be conducted prior to any disturbance works</i>						
B0B3 - R1006 - Textiles Technology L.S. (75.01 m2)						
Ceiling Structures/Linings	Vermiculite		8532/B00D/R1017/Ceiling Structures/Linings/S15			Limited Samples Taken
<i>Vermiculite Ceilings may contain asbestos. Asbestos testing MUST be conducted prior to any disturbance works</i>						
B0B3 - R1007 - Movement (36.76 m2)						
No Asbestos						

2017

Product	Material Description	Extent	Location Reference	Material Condition	Risk Status	Control Priority
Sample No					Test Result	

B0B4 - Art - 1976 - Brick/Block (Brick/Block)**Exterior**

Ceiling Voids - Flat Roof Non Accessible Area
- Area inaccessible

Interior**B0B4 - R0001 - Art Learning Space (59.66 m2)**

Ceiling Structures/Linings Vermiculite
8532/B00D/R1017/Ceiling Structures/Linings/S15 **Limited Samples Taken**
Vermiculite Ceilings may contain asbestos. Asbestos testing MUST be conducted prior to any disturbance works

Floor Coverings Res/Textile Vinyl Tiles
8532/B00D/R0004/Floor Coverings Res/Textile/S4 **No Asbestos Detected**

B0B4 - R0004 - Art Learning Space (60.24 m2)

Floor Coverings Res/Textile Vinyl Tiles
8532/B00D/R0004/Floor Coverings Res/Textile/S4 **No Asbestos Detected**

Ceiling Structures/Linings Vermiculite
8532/B00D/R1017/Ceiling Structures/Linings/S15 **Limited Samples Taken**
Vermiculite Ceilings may contain asbestos. Asbestos testing MUST be conducted prior to any disturbance works

B0B4 - R0005 - Resources Store (16.96 m2)

Ceiling Structures/Linings Vermiculite
8532/B00D/R1017/Ceiling Structures/Linings/S15 **Limited Samples Taken**
Vermiculite Ceilings may contain asbestos. Asbestos testing MUST be conducted prior to any disturbance works

B0B4 - R0006 - Distribution Board Cupboard (0.82 m2) Note: No inspection of live electrical installation.

Electrical Mounting Board Resinous Board 1Unit South Good Condition (1) Low (1) Low Priority (2-3)
8532/B0B1/R0003/Electrical Mounting Board/S24 **Chrysotile (white asbestos)**

Ceiling Structures/Linings Flat AC Sheeting 2m2 Throughout Good Condition (1) Low (1) Low Priority (2-3)
8532/B0B1/R0003/Ceiling Structures/Linings/S25 **Chrysotile (white asbestos)**

B0B4 - R0007 - Art Learning Space (65.68 m2)

Ceiling Structures/Linings Vermiculite
8532/B00D/R1017/Ceiling Structures/Linings/S15 **Limited Samples Taken**
Vermiculite Ceilings may contain asbestos. Asbestos testing MUST be conducted prior to any disturbance works

Floor Coverings Res/Textile Vinyl Tiles
8532/B00D/R0004/Floor Coverings Res/Textile/S4 **No Asbestos Detected**

B0B4 - R0008 - Cleaning Store - Distributed (7.02 m2)

No Asbestos

B0B4 - R0009 - Movement (52.24 m2)

No Asbestos

B0B4 - R0010 - Stairs (8.94 m2)

No Asbestos

B0B4 - R0011 - Dark Room (14.63 m2)

Ceiling Structures/Linings Vermiculite
8532/B00D/R1017/Ceiling Structures/Linings/S15 **Limited Samples Taken**
Vermiculite Ceilings may contain asbestos. Asbestos testing MUST be conducted prior to any disturbance works

B0B4 - R0012 - Darkroom Space (1.69 m2)

Ceiling Structures/Linings Vermiculite
8532/B00D/R1017/Ceiling Structures/Linings/S15 **Limited Samples Taken**
Vermiculite Ceilings may contain asbestos. Asbestos testing MUST be conducted prior to any disturbance works

B0B4 - R0013 - Darkroom Space (1.68 m2)

Product	Material Description	Extent	Location Reference	Material Condition	Risk Status	Control Priority
Sample No					Test Result	
Ceiling Structures/Linings	Vermiculite	8532/B00D/R1017/Ceiling Structures/Linings/S15				Limited Samples Taken
<i>Vermiculite Ceilings may contain asbestos. Asbestos testing MUST be conducted prior to any disturbance works</i>						
B0B4 - R0014 - Darkroom Space (4.8 m2)						
Ceiling Structures/Linings	Vermiculite	8532/B00D/R1017/Ceiling Structures/Linings/S15				Limited Samples Taken
<i>Vermiculite Ceilings may contain asbestos. Asbestos testing MUST be conducted prior to any disturbance works</i>						
B0B4 - R0015 - Darkroom Space (1.08 m2)						
Ceiling Structures/Linings	Vermiculite	8532/B00D/R1017/Ceiling Structures/Linings/S15				Limited Samples Taken
<i>Vermiculite Ceilings may contain asbestos. Asbestos testing MUST be conducted prior to any disturbance works</i>						
B0B4 - R0016 - Darkroom Space (3.79 m2)						
Ceiling Structures/Linings	Vermiculite	8532/B00D/R1017/Ceiling Structures/Linings/S15				Limited Samples Taken
<i>Vermiculite Ceilings may contain asbestos. Asbestos testing MUST be conducted prior to any disturbance works</i>						
B0B4 - R0017 - External Movement (52.4 m2)						
Recently Modified Space	Requires Inspection					
B0B4 - R0018 - External Movement (53.86 m2)						
Recently Modified Space	Requires Inspection					
B0B4 - R1001 - Movement (7.72 m2)						
No Asbestos						
B0B4 - R1002 - Stairs (16.86 m2)						
No Asbestos						

2017

Product	Material Description	Extent	Location Reference	Material Condition	Risk Status	Control Priority
Sample No					Test Result	

Demountables

Demountable details as per the AMS records as of 15 Feb 2017.

OS 971 - D80038 - Shed - Container (Garden/Sports/Bulk) : Placement Date - 30/06/1995

Exterior

No Asbestos Found.

Interior

R1 - Garden Store

No Asbestos Found.

OS 971 - D80039 - Shed - Container (Garden/Sports/Bulk) : Placement Date - 30/06/1995

Exterior

No Asbestos Found.

Interior

R1 - Garden Store

No Asbestos Found.

OS 971 - D80040 - Shed - Container (Garden/Sports/Bulk) : Placement Date - 30/06/1995

Exterior

No Asbestos Found.

Interior

R1 - Garden Store

No Asbestos Found.

OS 971 - D80041 - Shed - Container (Garden/Sports/Bulk) : Placement Date - 30/06/1995

Exterior

No Asbestos Found.

Interior

R1 - Garden Store

No Asbestos Found.

OS 971 - D80042 - Shed - Container (Garden/Sports/Bulk) : Placement Date - 30/06/1995

Exterior

No Asbestos Found.

Interior

R1 - Garden Store

No Asbestos Found.

2017

Product	Material Description	Extent	Location Reference	Material Condition	Risk Status	Control Priority
Sample No					Test Result	

Listing of Electronic Attachments as of 22/03/2017

There are no asbestos related file attachment(s) for this school.

2017