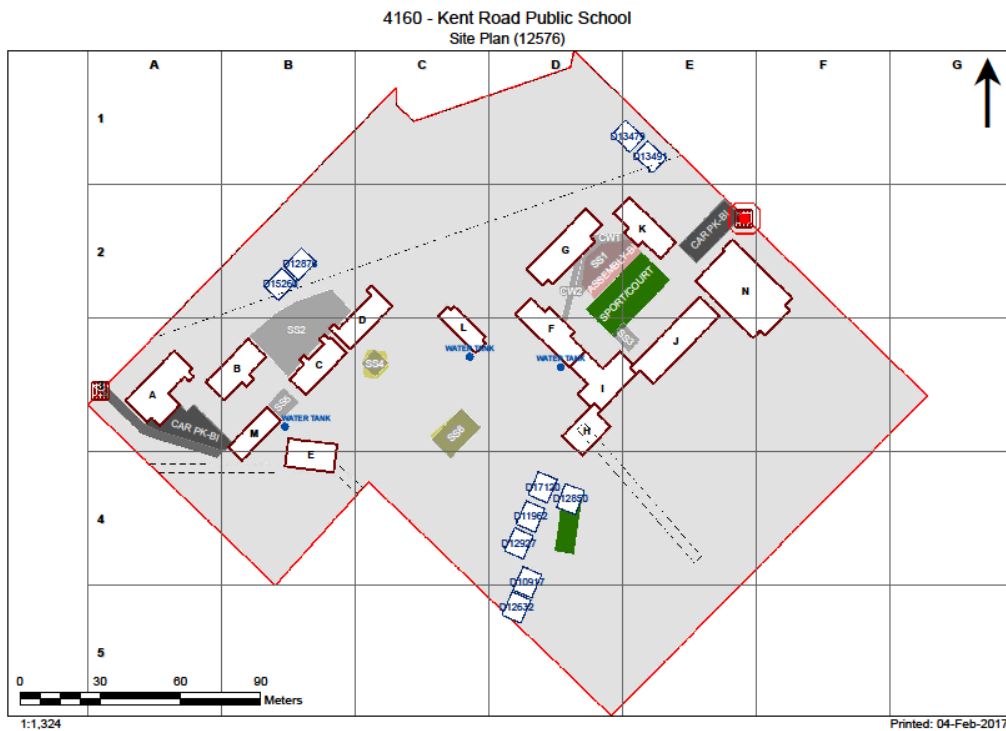


# Asbestos Register

(Hazardous Materials and Risk Assessment)

**School :** Kent Road Public School (4160)  
**Region :** Northern Sydney  
**State Electorate :** Ryde  
**Local Government Area :** Ryde

**Initial Survey :** Noel Arnold & Associates : 12 - Jun - 2008  
**Reviewed By :** Greencap-NAA : 13 - Aug - 2014



2017

Product	Material Description	Extent	Location Reference	Material Condition	Risk Status	Control Priority
Sample No					Test Result	

**B00A - General Learning - 1960 - Brick/Veneer (Brick/Veneer)**

**Exterior**

Eaves Linings	Flat AC Sheeting	40m2	North facing, South facing	Good Condition (1)	Low (1)	Low Priority (2-3)
	4160/B00A/Eaves Linings/S34			<b>Chrysotile (white asbestos) , Amosite (brown asbestos)</b>		
Gable verge	Flat AC Sheeting	20m	East facing, West facing	Good Condition (1)	Low (1)	Low Priority (2-3)
	4160/B00A/Gable verge/S33			<b>Chrysotile (white asbestos) , Amosite (brown asbestos) , Crocidolite (blue asbestos)</b>		
Ceiling Voids	Non Accessible Area - Height Restriction					
Underfloor Voids	No Asbestos Found					

**Interior**

**B00A - R0001 - External Movement**

Ceiling Structures/Linings	Flat AC Sheeting	5m2	Throughout	Good Condition (1)	Low (1)	Low Priority (2-3)
	4160/B00A/R0001/Ceiling Structures/Linings/S26			<b>Chrysotile (white asbestos) , Amosite (brown asbestos)</b>		

**B00A - R0002 - Movement**

Floor Coverings Res/Textile	Vinyl Tiles					<b>No Asbestos Detected</b>
	4160/B00A/R0002/Floor Coverings Res/Textile/S27					
Floor Coverings Res/Textile	Vinyl Tiles					<b>No Asbestos Detected</b>
	4160/B00A/R0002/Floor Coverings Res/Textile/S28					

**B00A - R0003 - Deputy Principal**

No Asbestos

**B00A - R0004 - Plant**

Floor Coverings Res/Textile	Vinyl Tiles					<b>No Asbestos Detected</b>
	4160/B00A/R0002/Floor Coverings Res/Textile/S27					
Floor Coverings Res/Textile	Vinyl Tiles					<b>No Asbestos Detected</b>
	4160/B00A/R0002/Floor Coverings Res/Textile/S28					

**B00A - R0005 - General Storeroom**

Floor Coverings Res/Textile	Vinyl Tiles					<b>No Asbestos Detected</b>
	4160/B00A/R0002/Floor Coverings Res/Textile/S27					
Floor Coverings Res/Textile	Vinyl Tiles					<b>No Asbestos Detected</b>
	4160/B00A/R0002/Floor Coverings Res/Textile/S28					

**B00A - R0006 - Cleaning Distributed Store**

Floor Coverings Res/Textile	Vinyl Tiles					<b>No Asbestos Detected</b>
	4160/B00B/R0005/Floor Coverings Res/Textile/S3					

**B00A - R0007 - Personal Effects Storage**

Floor Coverings Res/Textile	Vinyl Tiles					<b>No Asbestos Detected</b>
	4160/B00A/R0002/Floor Coverings Res/Textile/S27					
Floor Coverings Res/Textile	Vinyl Tiles					<b>No Asbestos Detected</b>
	4160/B00A/R0002/Floor Coverings Res/Textile/S28					

**B00A - R0008 - Home Base Store**

Floor Coverings Res/Textile	Vinyl Tiles					<b>No Asbestos Detected</b>
	4160/B00A/R0002/Floor Coverings Res/Textile/S27					

Product	Material Description	Extent	Location Reference	Material Condition	Risk Status	Control Priority
Sample No						Test Result
Floor Coverings Res/Textile	Vinyl Tiles					
	4160/B00A/R0002/Floor Coverings Res/Textile/S28					<b>No Asbestos Detected</b>
<b>B00A - R0009 - Home Base</b>						
No Asbestos						
<b>B00A - R0010 - Home Base</b>						
No Asbestos						
<b>B00A - R0011 - Practical Activities - 1hb</b>						
No Asbestos						
<b>B00A - R0012 - Home Base Store</b>						
No Asbestos						
<b>B00A - R0013 - Personal Effects Storage</b>						
No Asbestos						
<b>B00A - R0014 - Toilets - Boys/Girls</b>						
No Asbestos						
<b>B00A - R0015 - Movement</b>						
No Asbestos						
<b>B00A - R0016 - External Movement</b>						
Ceiling Structures/Linings	Flat AC Sheeting	4m2	Throughout	Good Condition (1)	Low (1)	Low Priority (2-3)
	4160/B00A/R0001/Ceiling Structures/Linings/S26					<b>Chrysotile (white asbestos) , Amosite (brown asbestos)</b>
<b>B00A - R0017 - External Movement</b>						
No Asbestos						

2017

Product	Material Description	Extent	Location Reference	Material Condition	Risk Status	Control Priority
Sample No					Test Result	

**B00B - General Learning - 1966 - Brick/Veneer (Brick/Veneer)**

**Exterior**

Eaves Linings	Flat AC Sheeting 4160/B00A/Eaves Linings/S34	40m2	North facing, South facing	Good Condition (1)	Low (1)	Low Priority (2-3)
				<b>Chrysotile (white asbestos) , Amosite (brown asbestos)</b>		
Gable verge	Flat AC Sheeting 4160/B00A/Gable verge/S33	20m	East facing, West facing	Good Condition (1)	Low (1)	Low Priority (2-3)
				<b>Chrysotile (white asbestos) , Amosite (brown asbestos) , Crocidolite (blue asbestos)</b>		
Ceiling Voids	Non Accessible Area - Height Restriction					
Underfloor Voids	No Asbestos Found					

**Interior**

**B00B - R0001 - Movement**

Ceiling Structures/Linings	Flat AC Sheeting 4160/B00B/R0001/Ceiling Structures/Linings/S25	9m2	Throughout	Good Condition (1)	Low (1)	Low Priority (2-3)
				<b>Chrysotile (white asbestos) , Amosite (brown asbestos)</b>		

**B00B - R0002 - Home Base**

No Asbestos

**B00B - R0003 - Home Base Store**

Floor Coverings Res/Textile	Vinyl Tiles 4160/B00B/R0005/Floor Coverings Res/Textile/S3					<b>No Asbestos Detected</b>
-----------------------------	---	--	--	--	--	-----------------------------

**B00B - R0004 - Personal Effects Storage**

Floor Coverings Res/Textile	Vinyl Tiles 4160/B00B/R0005/Floor Coverings Res/Textile/S3					<b>No Asbestos Detected</b>
-----------------------------	---	--	--	--	--	-----------------------------

**B00B - R0005 - Movement**

Floor Coverings Res/Textile	Vinyl Tiles 4160/B00B/R0005/Floor Coverings Res/Textile/S3					<b>No Asbestos Detected</b>
-----------------------------	---	--	--	--	--	-----------------------------

**B00B - R0006 - Deputy Principal**

Floor Coverings Res/Textile	Vinyl Tiles 4160/B00B/R0005/Floor Coverings Res/Textile/S3					<b>No Asbestos Detected</b>
-----------------------------	---	--	--	--	--	-----------------------------

**B00B - R0007 - General Storeroom**

Floor Coverings Res/Textile	Vinyl Tiles 4160/B00B/R0005/Floor Coverings Res/Textile/S3					<b>No Asbestos Detected</b>
-----------------------------	---	--	--	--	--	-----------------------------

**B00B - R0008 - Personal Effects Storage**

Floor Coverings Res/Textile	Vinyl Tiles 4160/B00B/R0005/Floor Coverings Res/Textile/S3					<b>No Asbestos Detected</b>
-----------------------------	---	--	--	--	--	-----------------------------

**B00B - R0009 - Home Base Store**

No Asbestos

**B00B - R0010 - Home Base**

No Asbestos

Product	Material Description	Extent	Location Reference	Material Condition	Risk Status	Control Priority
Sample No					Test Result	

**B00C - General Learning - 1969 - Brick/Veneer (Brick/Veneer)**

**Exterior**

Eaves Linings	Flat AC Sheeting 4160/B00A/Eaves Linings/S34	40m2	North facing, South facing	Good Condition (1)	Low (1)	Low Priority (2-3)
						<b>Chrysotile (white asbestos) , Amosite (brown asbestos)</b>
Gable verge	Flat AC Sheeting 4160/B00A/Gable verge/S33	20m	East facing, West facing	Good Condition (1)	Low (1)	Low Priority (2-3)
						<b>Chrysotile (white asbestos) , Amosite (brown asbestos) , Crocidolite (blue asbestos)</b>
Ceiling Voids	Non Accessible Area - Height Restriction					
Underfloor Voids	No Asbestos Found					

**Interior**

**B00C - R0001 - External Movement**

Ceiling Structures/Linings	Flat AC Sheeting 4160/B00C/R0001/Ceiling Structures/Linings/S24					<b>No Asbestos Detected</b>
----------------------------	--	--	--	--	--	-----------------------------

**B00C - R0002 - Home Base**

Floor Coverings Res/Textile	Vinyl Tiles 4160/B00C/R0008/Floor Coverings Res/Textile/S22					<b>No Asbestos Detected</b>
-----------------------------	--	--	--	--	--	-----------------------------

**B00C - R0003 - Home Base Store**

Floor Coverings Res/Textile	Vinyl Tiles 4160/B00C/R0008/Floor Coverings Res/Textile/S22					<b>No Asbestos Detected</b>
-----------------------------	--	--	--	--	--	-----------------------------

Floor Coverings Res/Textile	Vinyl Tiles 4160/B00C/R0008/Floor Coverings Res/Textile/S23					<b>No Asbestos Detected</b>
-----------------------------	--	--	--	--	--	-----------------------------

**B00C - R0004 - Personal Effects Storage**

No Asbestos

**B00C - R0005 - Movement**

No Asbestos

**B00C - R0006 - Home Base**

Floor Coverings Res/Textile	Vinyl Tiles 4160/B00C/R0008/Floor Coverings Res/Textile/S22					<b>No Asbestos Detected</b>
-----------------------------	--	--	--	--	--	-----------------------------

**B00C - R0007 - Staff Room**

Floor Coverings Res/Textile	Vinyl Tiles (Under Floor Covering/Carpet) 4160/B00C/R0008/Floor Coverings Res/Textile/S22					<b>No Asbestos Detected</b>
-----------------------------	--	--	--	--	--	-----------------------------

**B00C - R0008 - Movement**

Floor Coverings Res/Textile	Vinyl Tiles 4160/B00C/R0008/Floor Coverings Res/Textile/S22					<b>No Asbestos Detected</b>
-----------------------------	--	--	--	--	--	-----------------------------

Floor Coverings Res/Textile	Vinyl Tiles 4160/B00C/R0008/Floor Coverings Res/Textile/S23					<b>No Asbestos Detected</b>
-----------------------------	--	--	--	--	--	-----------------------------

**B00C - R0009 - External Movement**

Ceiling Structures/Linings	Flat AC Sheeting 4160/B00C/R0001/Ceiling Structures/Linings/S24					<b>No Asbestos Detected</b>
----------------------------	--	--	--	--	--	-----------------------------

Product	Material Description	Extent	Location Reference	Material Condition	Risk Status	Control Priority
Sample No					Test Result	

**B00D - General Learning - 1968 - Brick/Veneer (Brick/Veneer)**

**Exterior**

Eaves Linings	Flat AC Sheeting 4160/B00D/Eaves Linings/S37	40m2	North facing, South facing	Good Condition (1)	Low (1)	Low Priority (2-3)
				<b>Chrysotile (white asbestos) , Amosite (brown asbestos)</b>		
Gable verge	Flat AC Sheeting 4160/B00A/Gable verge/S33	20m	East facing, West facing	Good Condition (1)	Low (1)	Low Priority (2-3)
				<b>Chrysotile (white asbestos) , Amosite (brown asbestos) , Crocidolite (blue asbestos)</b>		
Ceiling Voids	Non Accessible Area - Height Restriction					
Underfloor Voids	No Asbestos Found					

**Interior**

**B00D - R0001 - External Movement**

Ceiling Structures/Linings	Flat AC Sheeting 4160/B00D/R0001/Ceiling Structures/Linings/S21	5m2	Throughout	Good Condition (1)	Low (1)	Low Priority (2-3)
				<b>Chrysotile (white asbestos) , Amosite (brown asbestos)</b>		

**B00D - R0002 - Movement**

No Asbestos

**B00D - R0003 - Personal Effects Storage**

No Asbestos

**B00D - R0004 - Toilets - Boys/Girls**

Wall Linings Internal	Flat AC Sheeting 4160/B00D/R0004/Wall Linings Internal/S4	16m2	All surfaces	Good Condition (1)	Low (1)	Low Priority (2-3)
				<b>Chrysotile (white asbestos)</b>		

**B00D - R0005 - Home Base**

No Asbestos

**B00D - R0006 - Home Base Store**

No Asbestos

**B00D - R0007 - Home Base**

No Asbestos

**B00D - R0008 - Home Base Store**

No Asbestos

**B00D - R0009 - Personal Effects Storage**

No Asbestos

**B00D - R0010 - Movement**

No Asbestos

**B00D - R0011 - External Movement**

Ceiling Structures/Linings	Flat AC Sheeting 4160/B00D/R0001/Ceiling Structures/Linings/S21	5m2	Throughout	Good Condition (1)	Low (1)	Low Priority (2-3)
				<b>Chrysotile (white asbestos) , Amosite (brown asbestos)</b>		

**B00D - R9001 - Cleaning Supplies**

No Asbestos

Product	Material Description	Extent	Location Reference	Material Condition	Risk Status	Control Priority
Sample No					Test Result	

**B00E - General Learning - 1960 - Brick/Veneer (Brick/Veneer)**

**Exterior**

Eaves Linings	Flat AC Sheeting 4160/B00E/Eaves Linings/S35	40m2	North facing, South facing	Good Condition (1)	Low (1)	Low Priority (2-3)
				<b>Chrysotile (white asbestos) , Amosite (brown asbestos)</b>		
Gable verge	Flat AC Sheeting 4160/B00A/Gable verge/S33	20m	East facing, West facing	Good Condition (1)	Low (1)	Low Priority (2-3)
				<b>Chrysotile (white asbestos) , Amosite (brown asbestos) , Crocidolite (blue asbestos)</b>		
Ceiling Voids	No Asbestos Found					
Underfloor Voids	No Asbestos Found					

**Interior**

**B00E - R0001 - Movement**

Ceiling Structures/Linings	Flat AC Sheeting 4160/B00E/R0001/Ceiling Structures/Linings/S29	20m2	Throughout	Good Condition (1)	Low (1)	Low Priority (2-3)
				<b>Chrysotile (white asbestos)</b>		
In-fill-panel	Flat AC Sheeting 4160/B00E/R0001/Panels below windows/S5	8m2	North facing, Lower portion	Good Condition (1)	Low (1)	Low Priority (2-3)
				<b>Chrysotile (white asbestos)</b>		

**B00E - R0007 - Cleaning Supplies**

Floor Coverings Res/Textile	Vinyl Tiles 4160/B00E/R0007/Floor Coverings Res/Textile/S30					
						<b>No Asbestos Detected</b>

**B00E - R0008 - Out Of School Hours Care Centre**

No Asbestos

**B00E - R0009 - Home Base Store**

No Asbestos

**B00E - R0010 - Covered Area**

No Asbestos

2017

Product	Material Description	Extent	Location Reference	Material Condition	Risk Status	Control Priority
Sample No					Test Result	

**B00F - General Learning - 1960 - Brick/Veneer (Brick/Veneer)**

**Exterior**

Eaves Linings	Flat AC Sheeting 4160/B00J/Eaves Linings/S39	40m2	East facing, West facing	Good Condition (1)	Low (1)	Low Priority (2-3)
				<b>Chrysotile (white asbestos) , Amosite (brown asbestos)</b>		
Gable verge	Flat AC Sheeting 4160/B00H/Gable verge/S41	20m	North facing, South facing	Good Condition (1)	Low (1)	Low Priority (2-3)
				<b>Chrysotile (white asbestos)</b>		
Ceiling Voids	Non Accessible Area - Height Restriction					
Underfloor Voids	No Asbestos Found					

**Interior**

**B00F - R0001 - Movement**

Ceiling Structures/Linings	Flat AC Sheeting 4160/B00F/R0001/Ceiling Structures/Linings/S16					<b>No Asbestos Detected</b>
----------------------------	--	--	--	--	--	-----------------------------

**B00F - R0002 - Home Base**

No Asbestos

**B00F - R0003 - Home Base Store**

No Asbestos

**B00F - R0004 - Personal Effects Storage**

No Asbestos

**B00F - R0005 - Home Base Store**

No Asbestos

**B00F - R0006 - Home Base**

No Asbestos

**B00F - R0007 - Movement**

Ceiling Structures/Linings	Flat AC Sheeting 4160/B00F/R0001/Ceiling Structures/Linings/S16					<b>No Asbestos Detected</b>
----------------------------	--	--	--	--	--	-----------------------------

**B00F - R0008 - Movement**

No Asbestos

**B00F - R0009 - General Storeroom**

Electrical Mounting Board	Resinous Board	1Unit	North facing	Good Condition (1)	Low (1)	Low Priority (2-3)
---------------------------	----------------	-------	--------------	--------------------	---------	--------------------

**Assumed Asbestos - Electrical Hazard**

**B00F - R0010 - Home Base Store**

No Asbestos

**B00F - R0011 - Home Base**

No Asbestos

**B00F - R9001 - Garden Store**

No Asbestos





Product	Material Description	Extent	Location Reference	Material Condition	Risk Status	Control Priority
Sample No					Test Result	

**B00G - Library - 1960 - Brick/Veneer (Brick/Veneer)**

**Exterior**

Eaves Linings	Flat AC Sheeting 4160/B00J/Eaves Linings/S39	40m2	East facing, West facing	Good Condition (1)	Low (1)	Low Priority (2-3)
				<b>Chrysotile (white asbestos) , Amosite (brown asbestos)</b>		
Gable verge	Flat AC Sheeting 4160/B00H/Gable verge/S41	20m	North facing, South facing	Good Condition (1)	Low (1)	Low Priority (2-3)
				<b>Chrysotile (white asbestos)</b>		
Underfloor Voids	Packing 4160/B00G/Underfloor Voids/S17	2m2	Variable positions	Minimal Damage (2)	Low (1)	Low Priority (2-3)
				<b>Chrysotile (white asbestos) , Amosite (brown asbestos) , Crocidolite (blue asbestos)</b>		
Ceiling Voids	Non Accessible Area - Height Restriction					

**Interior**

**B00G - R0001 - External Movement**

Ceiling Structures/Linings	Flat AC Sheeting 4160/B00G/R0001/Ceiling Structures/Linings/S18	5m2	Throughout	Good Condition (1)	Low (1)	Low Priority (2-3)
				<b>Chrysotile (white asbestos) , Amosite (brown asbestos) , Crocidolite (blue asbestos)</b>		

**B00G - R0010 - General Storeroom**

No Asbestos

**B00G - R0012 - Movement**

Panel above door	Flat AC Sheeting 4160/B00G/R0001/Ceiling Structures/Linings/S18	1m2	South facing	Good Condition (1)	Low (1)	Low Priority (2-3)
				<b>Chrysotile (white asbestos) , Amosite (brown asbestos) , Crocidolite (blue asbestos)</b>		

**B00G - R0013 - General Storeroom**

No Asbestos

**B00G - R0014 - External Movement**

Ceiling Structures/Linings	Flat AC Sheeting 4160/B00G/R0001/Ceiling Structures/Linings/S18	5m2	Throughout	Good Condition (1)	Low (1)	Low Priority (2-3)
				<b>Chrysotile (white asbestos) , Amosite (brown asbestos) , Crocidolite (blue asbestos)</b>		

**B00G - R0015 - Reading Area**

No Asbestos

**B00G - R0016 - Library Office/Workroom**

No Asbestos

**B00G - R0017 - K.L.A. Store**

No Asbestos

2017

Product	Material Description	Extent	Location Reference	Material Condition	Risk Status	Control Priority
Sample No					Test Result	

**B00H - Other-Commercial - 1960 - Brick/Veneer (Brick/Veneer)**

**Exterior**

Eaves Linings	Flat AC Sheeting 4160/B00J/Eaves Linings/S39	40m2	East facing, West facing	Good Condition (1)	Low (1)	Low Priority (2-3)
						<b>Chrysotile (white asbestos) , Amosite (brown asbestos)</b>
Gable verge	Flat AC Sheeting 4160/B00H/Gable verge/S41	20m	North facing, South facing	Good Condition (1)	Low (1)	Low Priority (2-3)
						<b>Chrysotile (white asbestos)</b>
Ceiling Voids	Non Accessible Area - Height Restriction					
Underfloor Voids	No Asbestos Found					

**Interior**

**B00H - R0001 - Other-Commercial**

No Asbestos

**B00H - R0002 - Other-Commercial**

No Asbestos

**B00H - R0003 - Special Programs Room**

No Asbestos

**B00H - R0004 - Other-Commercial**

Ceiling Structures/Linings	Flat AC Sheeting 4160/B00H/R0004/Ceiling Structures/Linings/S6	33m2	All surfaces	Good Condition (1)	Low (1)	Low Priority (2-3)
						<b>Chrysotile (white asbestos)</b>
Panels below windows	Flat AC Sheeting 4160/B00H/R0004/Panels below windows/S15	8m2	North facing	Good Condition (1)	Low (1)	Low Priority (2-3)
						<b>Chrysotile (white asbestos)</b>

2017

Product	Material Description	Extent	Location Reference	Material Condition	Risk Status	Control Priority
Sample No					Test Result	

**B00I - General Learning - 1960 - Brick/Veneer (Brick/Veneer)**

**Exterior**

Eaves Linings	Flat AC Sheeting 4160/B00J/Eaves Linings/S39	40m2	North facing, South facing	Good Condition (1)	Low (1)	Low Priority (2-3)
					<b>Chrysotile (white asbestos) , Amosite (brown asbestos)</b>	
Gable verge	Flat AC Sheeting 4160/B00H/Gable verge/S41	20m	East facing, West facing	Good Condition (1)	Low (1)	Low Priority (2-3)
					<b>Chrysotile (white asbestos)</b>	
Ceiling Voids	Non Accessible Area - Height Restriction					
Underfloor Voids	No Asbestos Found					

**Interior**

**B00I - R0001 - Home Base**

No Asbestos

**B00I - R0002 - Home Base Store**

No Asbestos

**B00I - R0003 - Personal Effects Storage**

No Asbestos

**B00I - R0004 - Movement**

No Asbestos

**B00I - R0005 - Home Base Store**

No Asbestos

**B00I - R0006 - Home Base**

No Asbestos

**B00I - R0007 - Movement**

Ceiling Structures/Linings	Flat AC Sheeting 4160/B00I/R0007/Ceiling Structures/Linings/S13					<b>No Asbestos Detected</b>
Panels below windows	Flat AC Sheeting 4160/B00I/R0007/Panels below windows/S14	4m2	North facing	Good Condition (1)	Low (1)	Low Priority (2-3)
					<b>Chrysotile (white asbestos)</b>	

**B00I - R0008 - Movement**

No Asbestos

2017

Product	Material Description	Extent	Location Reference	Material Condition	Risk Status	Control Priority
Sample No				Test Result		

**B00J - General Learning/Administration - 1992 - Brick/Veneer (Brick/Veneer)**

**Exterior**

Eaves Linings	Flat AC Sheeting 4160/B00J/Eaves Linings/S39	80m2	East facing, West facing	Good Condition (1) <b>Chrysotile (white asbestos) , Amosite (brown asbestos)</b>	Low (1)	Low Priority (2-3)
Gable verge	Flat AC Sheeting 4160/B00J/Gable verge/S9	20m	North facing, South facing	Good Condition (1) <b>Chrysotile (white asbestos)</b>	Low (1)	Low Priority (2-3)
Ceiling Voids	Non Accessible Area - Height Restriction					
Underfloor Voids	AC Fragments/Debris 4160/B00J/Underfloor Voids/S8 <b>No Asbestos Detected</b>					

**Interior**

**B00J - R0001 - Home Base**

Floor Coverings Res/Textile	Vinyl Tiles (Under Floor Covering/Carpet) 4160/B00J/R0009/Floor Coverings Res/Textile/S2	57m2	Throughout	Good Condition (1) <b>Chrysotile (white asbestos)</b>	Low (1)	Low Priority (2-3)
-----------------------------	---	------	------------	--	---------	--------------------

**B00J - R0002 - Home Base Store**

No Asbestos

**B00J - R0003 - Personal Effects Storage**

No Asbestos

**B00J - R0004 - Movement**

No Asbestos

**B00J - R0005 - General Storeroom**

No Asbestos

**B00J - R0006 - Staff Room**

Floor Coverings Res/Textile	Vinyl Tiles (Under Floor Covering/Carpet) 4160/B00J/R0009/Floor Coverings Res/Textile/S2	35m2	Throughout	Good Condition (1) <b>Chrysotile (white asbestos)</b>	Low (1)	Low Priority (2-3)
-----------------------------	---	------	------------	--	---------	--------------------

**B00J - R0007 - Sick Bay**

Floor Coverings Res/Textile	Vinyl Tiles (Under Floor Covering/Carpet) 4160/B00J/R0009/Floor Coverings Res/Textile/S2	7m2	Throughout	Good Condition (1) <b>Chrysotile (white asbestos)</b>	Low (1)	Low Priority (2-3)
-----------------------------	---	-----	------------	--	---------	--------------------

**B00J - R0008 - Staff Toilet**

Wall Linings Internal	Flat AC Sheeting 4160/B00J/R0010/Wall Linings Internal/S1	4m2	All surfaces	Good Condition (1) <b>Chrysotile (white asbestos)</b>	Low (1)	Low Priority (2-3)
-----------------------	--	-----	--------------	--	---------	--------------------

**B00J - R0009 - Cleaning Distributed Store**

Floor Coverings Res/Textile	Vinyl Tiles 4160/B00J/R0009/Floor Coverings Res/Textile/S2	4m2	All surfaces	Good Condition (1) <b>Chrysotile (white asbestos)</b>	Low (1)	Low Priority (2-3)
-----------------------------	---	-----	--------------	--	---------	--------------------

**B00J - R0010 - Staff Toilet**

Wall Linings Internal	Flat AC Sheeting 4160/B00J/R0010/Wall Linings Internal/S1	18m2	All surfaces	Good Condition (1) <b>Chrysotile (white asbestos)</b>	Low (1)	Low Priority (2-3)
-----------------------	--	------	--------------	--	---------	--------------------

**B00J - R0011 - General Storeroom**

Floor Coverings Res/Textile	Vinyl Tiles 4160/B00J/R0009/Floor Coverings Res/Textile/S2	9m2	All surfaces	Good Condition (1) <b>Chrysotile (white asbestos)</b>	Low (1)	Low Priority (2-3)
-----------------------------	---	-----	--------------	--	---------	--------------------

**B00J - R0012 - Distribution Board**

Note: No inspection of live electrical installation.

Wall Linings Internal	Flat AC Sheeting 4160/B00J/R0012/Wall Linings Internal/S7	6m2	All surfaces	Good Condition (1) <b>Chrysotile (white asbestos)</b>	Low (1)	Low Priority (2-3)
-----------------------	--	-----	--------------	--	---------	--------------------

Floor Coverings Res/Textile	Vinyl Tiles 4160/B00J/R0009/Floor Coverings Res/Textile/S2	1m2	All surfaces	Good Condition (1) <b>Chrysotile (white asbestos)</b>	Low (1)	Low Priority (2-3)
-----------------------------	---	-----	--------------	--	---------	--------------------

Product	Material Description	Extent	Location Reference	Material Condition	Risk Status	Control Priority
Sample No					Test Result	
<b>B00J - R0013 - Movement</b>						
Floor Coverings Res/Textile	Vinyl Tiles (Under Floor Covering/Carpet)	31m2	Throughout	Good Condition (1)	Low (1)	Low Priority (2-3)
4160/B00J/R0009/Floor Coverings Res/Textile/S2					<b>Chrysotile (white asbestos)</b>	
<b>B00J - R0014 - Principal</b>						
Floor Coverings Res/Textile	Vinyl Tiles (Under Floor Covering/Carpet)	14m2	Throughout	Good Condition (1)	Low (1)	Low Priority (2-3)
4160/B00J/R0009/Floor Coverings Res/Textile/S2					<b>Chrysotile (white asbestos)</b>	
<b>B00J - R0015 - Clerical Office</b>						
Floor Coverings Res/Textile	Vinyl Tiles (Under Floor Covering/Carpet)	14m2	Throughout	Good Condition (1)	Low (1)	Low Priority (2-3)
4160/B00J/R0009/Floor Coverings Res/Textile/S2					<b>Chrysotile (white asbestos)</b>	
<b>B00J - R0016 - Clerical Office/Workroom</b>						
Vinyl Tiles (Under Floor Covering/Carpet)	No Asbestos Found					
<b>B00J - R0018 - External Movement</b>						
Ceiling Structures/Linings	Flat AC Sheeting					
4160/B00J/R0018/Ceiling Structures/Linings/S10					<b>No Asbestos Detected</b>	
<b>B00J - R0019 - Principal</b>						
Floor Coverings Res/Textile	Vinyl Tiles (Under Floor Covering/Carpet)	15m2	Throughout	Good Condition (1)	Low (1)	Low Priority (2-3)
4160/B00J/R0009/Floor Coverings Res/Textile/S2					<b>Chrysotile (white asbestos)</b>	
<b>B00J - R0020 - Security Store</b>						
Floor Coverings Res/Textile	Vinyl Tiles (Under Floor Covering/Carpet)	5m2	Throughout	Good Condition (1)	Low (1)	Low Priority (2-3)
4160/B00J/R0009/Floor Coverings Res/Textile/S2					<b>Chrysotile (white asbestos)</b>	

2017

Product	Material Description	Extent	Location Reference	Material Condition	Risk Status	Control Priority
Sample No					Test Result	

**B00K - General Learning - 1960 - Brick/Veneer (Brick/Veneer)**

**Exterior**

Eaves Linings	Flat AC Sheeting 4160/B00J/Eaves Linings/S39	60m2	North facing, South facing	Good Condition (1)	Low (1)	Low Priority (2-3)
					<b>Chrysotile (white asbestos) , Amosite (brown asbestos)</b>	
Gable verge	Flat AC Sheeting 4160/B00H/Gable verge/S41	20m	East facing, West facing	Good Condition (1)	Low (1)	Low Priority (2-3)
					<b>Chrysotile (white asbestos)</b>	
Underfloor Voids	No Asbestos Found					

**Interior**

**B00K - R0001 - External Movement**

Ceiling Structures/Linings	Flat AC Sheeting 4160/B00K/R0001/Ceiling Structures/Linings/S19						<b>No Asbestos Detected</b>
----------------------------	--	--	--	--	--	--	-----------------------------

**B00K - R0002 - Home Base**

No Asbestos

**B00K - R0003 - Home Base Store**

No Asbestos

**B00K - R0004 - Personal Effects Storage**

No Asbestos

**B00K - R0005 - General Storeroom**

No Asbestos

**B00K - R0006 - General Storeroom**

No Asbestos

**B00K - R0007 - Deputy Principal**

No Asbestos

**B00K - R0008 - Personal Effects Storage**

Electrical Mounting Board	Resinous Board	1Unit	North facing	Good Condition (1)	Low (1)	Low Priority (2-3)
					<b>Assumed Asbestos - Electrical Hazard</b>	
Electrical Backing Board	Wall Lining 4160/B00K/R0008/Electrical Backing Board/S20	2m2	Throughout	Good Condition (1)	Low (1)	Low Priority (2-3)
					<b>Chrysotile (white asbestos)</b>	

**B00K - R0009 - Home Base Store**

No Asbestos

**B00K - R0010 - Home Base**

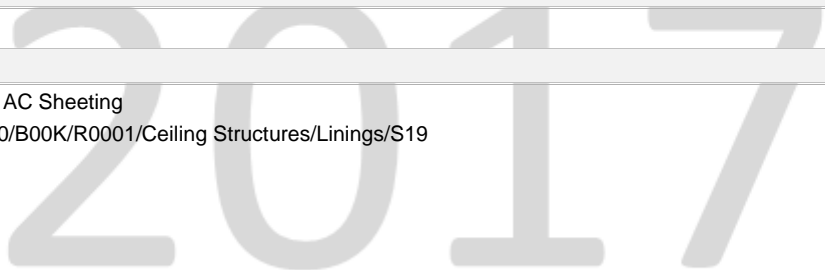
No Asbestos

**B00K - R0011 - Movement**

No Asbestos

**B00K - R0012 - Movement**

Ceiling Structures/Linings	Flat AC Sheeting 4160/B00K/R0001/Ceiling Structures/Linings/S19						<b>No Asbestos Detected</b>
----------------------------	--	--	--	--	--	--	-----------------------------



Product	Material Description	Extent	Location Reference	Material Condition	Risk Status	Control Priority
Sample No					Test Result	

**B00L - Pupil Facilities - 1966 - Brick/Block (Brick/Block)**

**Exterior**

Ceiling Voids - Flat Roof	No Asbestos Found
Underfloor Voids	No Asbestos Found

**Interior**

**B00L - R0001 - Toilets - Girls**

No Asbestos

**B00L - R0002 - Cleaning Distributed Store**

No Asbestos

**B00L - R0003 - Toilets - Boys**

No Asbestos

**B00L - R0004 - Handwashing Facilities**

No Asbestos

**B00L - R0005 - General Storeroom**

Wall Linings Internal	Flat AC Sheeting	4160/B00N/R0029/Ceiling Structures/Linings/S11	<b>No Asbestos Detected</b>
-----------------------	------------------	--	-----------------------------

2017

Product	Material Description	Extent	Location Reference	Material Condition	Risk Status	Control Priority
Sample No					Test Result	

**B00M - Pupil Facilities - 1960 - Brick/Block (Brick/Block)**

**Exterior**

Ceiling Voids - Flat Roof	No Asbestos Found
Underfloor Voids	No Asbestos Found

**Interior**

**B00M - R0001 - Toilets - Boys**

No Asbestos

**B00M - R0002 - Handwashing Facilities**

No Asbestos

**B00M - R0003 - Handwashing Facilities**

No Asbestos

**B00M - R0004 - No Access**

No Asbestos

2017



Product	Material Description	Extent	Location Reference	Material Condition	Risk Status	Control Priority
Sample No					Test Result	

**B00N - Communal Facilities - 1960 - Brick/Block (Brick/Block)**

**Exterior**

Eaves Linings	Flat AC Sheeting 4160/B00N/Eaves Linings/S12					No Asbestos Detected
Ceiling Voids	No Asbestos Found					
Underfloor Voids	No Asbestos Found					

**Interior**

<b>B00N - R0006 - P.E. Store</b>	No Asbestos					
<b>B00N - R0007 - Hall Chair Store</b>	No Asbestos					
<b>B00N - R0008 - Toilets - Girls</b>	No Asbestos					
<b>B00N - R0009 - Shower/Change</b>	No Asbestos					
<b>B00N - R0010 - Movement</b>	No Asbestos					
<b>B00N - R0011 - Raised Platform</b>	No Asbestos					
<b>B00N - R0013 - Movement</b>	No Asbestos					
<b>B00N - R0014 - Toilets - Boys</b>	No Asbestos					
<b>B00N - R0015 - Plant</b>	No Asbestos					
<b>B00N - R0016 - General Assistant/Bulk Store</b>	No Asbestos					
<b>B00N - R0017 - Garden Store</b>	No Asbestos					
<b>B00N - R0018 - General Storeroom</b>	No Asbestos					
<b>B00N - R0019 - Disabled Toilet</b>	No Asbestos					
<b>B00N - R0020 - Cleaning Distributed Store</b>	No Asbestos					
<b>B00N - R0021 - Movement</b>	No Asbestos					
<b>B00N - R0022 - Movement</b>	No Asbestos					
<b>B00N - R0023 - Plant</b>	No Asbestos					
<b>B00N - R0024 - Communal Space</b>	No Asbestos					
<b>B00N - R0025 - Canteen</b>	No Asbestos					
<b>B00N - R0026 - Canteen Office/Store</b>	No Asbestos					
<b>B00N - R0027 - General Storeroom</b>	No Asbestos					
<b>B00N - R0028 - General Storeroom</b>	No Asbestos					

Product	Material Description	Extent	Location Reference	Material Condition	Risk Status	Control Priority
Sample No					Test Result	

No Asbestos

**B00N - R0029 - Covered Outdoor Learning Area**

Ceiling Structures/Linings Flat AC Sheeting  
 4160/B00N/R0029/Ceiling Structures/Linings/S11

**No Asbestos Detected**

**B00N - R0030 - External Movement**

No Asbestos

**B00N - R0031 - Distribution Board**

Note: No inspection of live electrical installation.

No Asbestos

2017

Product	Material Description	Extent	Location Reference	Material Condition	Risk Status	Control Priority
Sample No					Test Result	

**Build+1 - Walkway between Buildings K and G**

**Exterior**

Ceiling Voids - Flat Roof	No Asbestos Found
Underfloor Voids - Slab on Ground	No Asbestos Found

**Interior**

**Build+1 - Room+1 - Walkway**

Ceiling Structures/Linings	Flat AC Sheeting 4160/Build+1/Room+1/Ceiling Structures/Linings/S31	<b>No Asbestos Detected</b>
----------------------------	--	-----------------------------

2017

Product	Material Description	Extent	Location Reference	Material Condition	Risk Status	Control Priority
Sample No					Test Result	

**Build+2 - Walkway between Buildings G and F**

**Exterior**

Ceiling Voids - Flat Roof	No Asbestos Found
Underfloor Voids - Slab on Ground	No Asbestos Found

**Interior**

**Build+2 - Room+1 - Walkway**

Ceiling Structures/Linings	Flat AC Sheeting 4160/Build+2/Room+1/Ceiling Structures/Linings/S32	<b>No Asbestos Detected</b>
----------------------------	--	-----------------------------

2017

Product	Material Description	Extent	Location Reference	Material Condition	Risk Status	Control Priority
Sample No					Test Result	

**Demountables**

**Demountable details as per the AMS records as of 15 Feb 2017.**

**OS 602 - D10917 - Learning Unit - Standard With P.A.A. : Placement Date - 10/01/2015**

Note: This refurbished demountable may have asbestos present in remnant mastic in window frames.

**Exterior**

No Asbestos Found.

**Interior**

**R1 - Learning space/withdrawal/entry**

No Asbestos Found.

**R2 - Home Base Store**

No Asbestos Found.

**OS 602 - D11962 - Learning Unit - Standard With P.A.A. : Placement Date - 1/11/2013**

**Exterior**

Eave Lining	Flat AC Sheet	Assumed Asbestos	11.52 m2
Landing	Compressed AC Sheet	Assumed Asbestos	1.2 m2
Step Treads	Compressed AC Sheet	Assumed Asbestos	1.08 m2

**Interior**

**R1 - Learning space/withdrawal/entry**

Ceiling	Flat AC Sheet	Assumed Asbestos	70 m2
---------	---------------	------------------	-------

**R2 - Home Base Store**

End wall panel	Flat AC Sheet	Assumed Asbestos	18 m2
Ceiling	Flat AC Sheet	Assumed Asbestos	3 m2

**OS 602 - D12632 - Learning Unit - Standard With P.A.A. : Placement Date - 10/09/2015**

**Exterior**

No Asbestos Found.

**Interior**

**R1 - Learning space/withdrawal/entry**

No Asbestos Found.

**R2 - Home Base Store**

No Asbestos Found.

**OS 602 - D12850 - Learning Unit - Standard With P.A.A. : Placement Date - 26/11/2015**

Note: This refurbished demountable may have asbestos present in remnant mastic in window frames.

**Exterior**

No Asbestos Found.

**Interior**

**R1 - Learning space/withdrawal/entry**

No Asbestos Found.

**R2 - Home Base Store**

No Asbestos Found.

**OS 602 - D12876 - Learning Unit - Standard With P.A.A. : Placement Date - 15/11/2012**

Note: This refurbished demountable may have asbestos present in remnant mastic in window frames.

**Exterior**

No Asbestos Found.



Product	Material Description	Extent	Location Reference	Material Condition	Risk Status	Control Priority
Sample No					Test Result	
<b>Interior</b>						
<b>R1 - Learning space/withdrawal/entry</b>						
No Asbestos Found.						
<b>R2 - Home Base Store</b>						
No Asbestos Found.						
<b>OS 601 - D12927 - Learning Unit - Standard/Withdrawal : Placement Date - 14/01/2015</b>						
<b>Exterior</b>						
Landing	Compressed AC Sheet	Assumed Asbestos				1.2 m2
Step Treads	Compressed AC Sheet	Assumed Asbestos				1.08 m2
Eave Lining	Flat AC Sheet	Assumed Asbestos				11.52 m2
<b>Interior</b>						
<b>R1 - Entry</b>						
End wall panel	Flat AC Sheet	Assumed Asbestos				18 m2
Ceiling	Flat AC Sheet	Assumed Asbestos				8 m2
<b>R2 - General Learning Space</b>						
End wall panel	Flat AC Sheet	Assumed Asbestos				18 m2
Ceiling	Flat AC Sheet	Assumed Asbestos				55 m2
<b>R3 - Store</b>						
Ceiling	Flat AC Sheet	Assumed Asbestos				10 m2
<b>OS 602 - D13269 - Learning Unit - Standard With P.A.A. : Placement Date - 28/01/2017</b>						
Note: This refurbished demountable may have asbestos present in remnant mastic in window frames.						
<b>Exterior</b>						
No Asbestos Found.						
<b>Interior</b>						
<b>R1 - Learning space/withdrawal/entry</b>						
No Asbestos Found.						
<b>R2 - Home Base Store</b>						
No Asbestos Found.						
<b>OS 602 - D13479 - Learning Unit - Standard With P.A.A. : Placement Date - 10/02/2016</b>						
Note: This refurbished demountable may have asbestos present in remnant mastic in window frames.						
<b>Exterior</b>						
No Asbestos Found.						
<b>Interior</b>						
<b>R1 - Learning space/withdrawal/entry</b>						
No Asbestos Found.						
<b>R2 - Home Base Store</b>						
No Asbestos Found.						
<b>OS 602 - D13491 - Learning Unit - Standard With P.A.A. : Placement Date - 10/02/2016</b>						
Note: This refurbished demountable may have asbestos present in remnant mastic in window frames.						
<b>Exterior</b>						
No Asbestos Found.						
<b>Interior</b>						
<b>R1 - Learning space/withdrawal/entry</b>						
No Asbestos Found.						
<b>R2 - Home Base Store</b>						
No Asbestos Found.						

Product	Material Description	Extent	Location Reference	Material Condition	Risk Status	Control Priority
Sample No					Test Result	

**OS 602 - D15013 - Learning Unit - Standard With P.A.A. : Placement Date - 8/11/2016**

Note: This refurbished demountable may have asbestos present in remnant mastic in window frames.

**Exterior**

No Asbestos Found.

**Interior**

**R1 - Learning space/withdrawal/entry**

No Asbestos Found.

**R2 - Home Base Store**

No Asbestos Found.

**OS 602 - D15260 - Learning Unit - Standard With P.A.A. : Placement Date - 15/11/2012**

Note: This refurbished demountable may have asbestos present in remnant mastic in window frames.

**Exterior**

No Asbestos Found.

**Interior**

**R1 - Learning space/withdrawal/entry**

No Asbestos Found.

**R2 - Home Base Store**

No Asbestos Found.

**OS 601 - D17120 - Learning Unit - Standard/Withdrawal : Placement Date - 15/05/2013**

**Exterior**

No Asbestos Found.

**Interior**

**R1 - Entry**

No Asbestos Found.

**R2 - General Learning Space**

No Asbestos Found.

**R3 - Store**

No Asbestos Found.

2017

Product	Material Description	Extent	Location Reference	Material Condition	Risk Status	Control Priority
Sample No					Test Result	

*Listing of Electronic Attachments as of 22/03/2017*

**There are no asbestos related file attachment(s) for this school.**

2017