

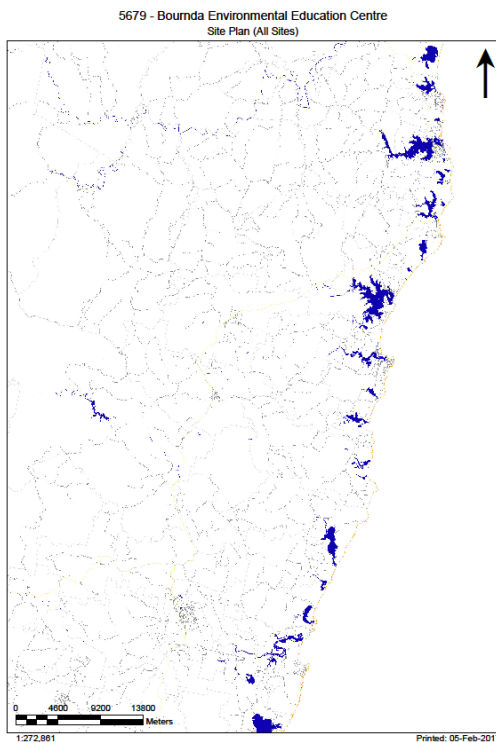
Asbestos Register

(Hazardous Materials and Risk Assessment)



School : Bournda Environmental Education Centre (5679)
Region : Illawarra and South East
State Electorate : Bega
Local Government Area : Bega Valley

Initial Survey : Noel Arnold & Associates : 08 - May - 2008
Reviewed By : Greencap-NAA : 17 - Jun - 2016



2017

Product	Material Description	Extent	Location Reference	Material Condition	Risk Status	Control Priority
Sample No					Test Result	

B00B - Staff Facilities - 2002 - Timber (Timber)**Exterior**

Underfloor Voids - Packing to Floor Joists	No Asbestos Found
Ceiling Voids	No Asbestos Found

Interior**B00B - R0001 - General Assistant/Bulk Store**

Wall Linings Internal	Flat AC Sheeting 5679/B00B/R0001/Wall Linings Internal/S4	No Asbestos Detected
Ceiling Structures/Linings	Flat AC Sheeting 5679/B00B/R0001/Ceiling Structures/Linings/S5	No Asbestos Detected

B00B - R0002 - Movement

Wall Linings Internal	Flat AC Sheeting 5679/B00B/R0001/Wall Linings Internal/S4	No Asbestos Detected
Ceiling Structures/Linings	Flat AC Sheeting 5679/B00B/R0001/Ceiling Structures/Linings/S5	No Asbestos Detected

B00B - R0003 - Staff Kitchen

Wall Linings Internal	Flat AC Sheeting 5679/B00B/R0001/Wall Linings Internal/S4	No Asbestos Detected
Ceiling Structures/Linings	Flat AC Sheeting 5679/B00B/R0001/Ceiling Structures/Linings/S5	No Asbestos Detected

2017

Product	Material Description	Extent	Location Reference	Material Condition	Risk Status	Control Priority
Sample No					Test Result	

B00E - Administration - 2002 - Timber (Timber)**Exterior**

Underfloor Voids - Packing to Floor Joists	No Asbestos Found					
Electrical Backing Board	Resinous Board	0.5m2	Northwest corner	Good Condition (1)	Low (1)	Low Priority (2-3)
	5679/B00E/Electrical Backing Board/S3					Chrysotile (white asbestos)
Ceiling Voids	No Asbestos Found					

Interior**B00E - R0001 - Movement**

No Asbestos

B00E - R0002 - Clerical Office

Wall Linings Internal	Flat AC Sheeting	70m2	Throughout	Good Condition (1)	Low (1)	Low Priority (2-3)
	5679/B00E/R0002/Wall Linings Internal/S2					Chrysotile (white asbestos) , Amosite (brown asbestos)
Floor Coverings Res/Textile	Compressed AC Sheet					
	5679/B00E/R0002/Floor Coverings Res/Textile/S1					No Asbestos Detected

B00E - R0003 - General Assistant/Bulk Store

No Asbestos

B00E - R0004 - Clerical Office

No Asbestos

2017

Product	Material Description	Extent	Location Reference	Material Condition	Risk Status	Control Priority
Sample No					Test Result	

B00F - Pupil Facilities - 2002 - Timber (Timber)

Exterior

Underfloor Voids - Slab on Ground No Asbestos Found

Ceiling Voids No Asbestos Found

Interior

B00F - R0001 - Toilets - Girls

No Asbestos

2017

Product	Material Description	Extent	Location Reference	Material Condition	Risk Status	Control Priority
Sample No					Test Result	

B00G - Pupil Facilities - 2002 - Timber (Timber)

Exterior

Underfloor Voids - Slab on Ground No Asbestos Found

Ceiling Voids No Asbestos Found

Interior

B00G - R0001 - Toilets - Boys

No Asbestos

2017

Product	Material Description	Extent	Location Reference	Material Condition	Risk Status	Control Priority
Sample No					Test Result	

Demountables

There are no Demountable(s) located at this school as per the AMS records as of 15 Feb 2017.

2017

Product	Material Description	Extent	Location Reference	Material Condition	Risk Status	Control Priority
Sample No					Test Result	

Listing of Electronic Attachments as of 22/03/2017

There are no asbestos related file attachment(s) for this school.

2017