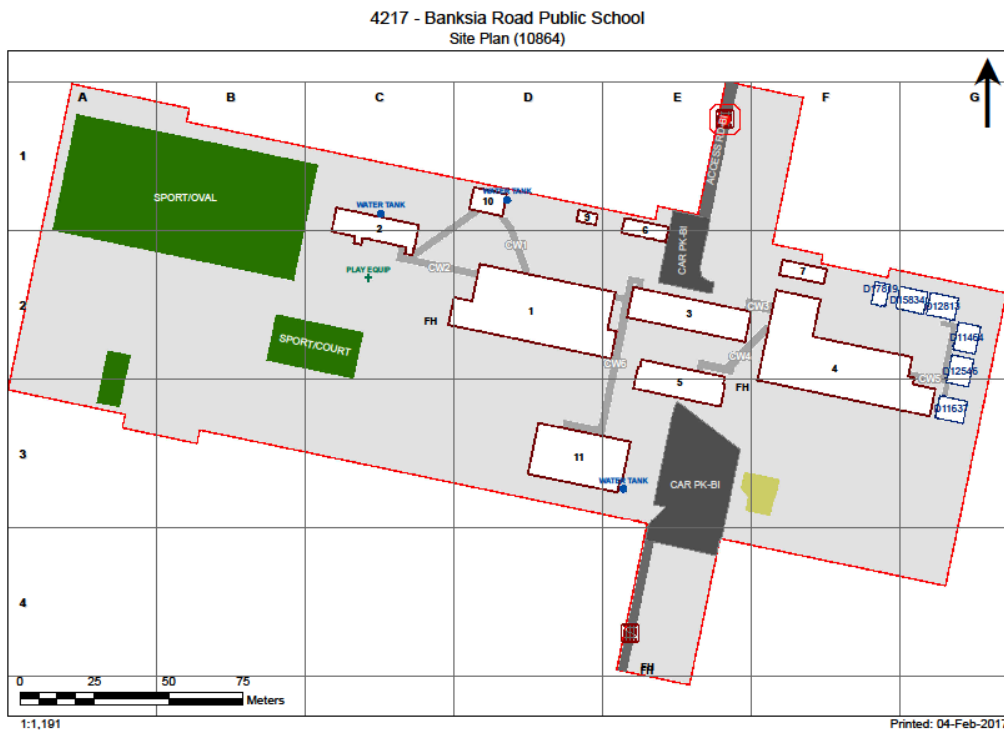


Asbestos Register

(Hazardous Materials and Risk Assessment)

School : Banksia Road Public School (4217)
Region : South Western Sydney
State Electorate : Lakemba
Local Government Area : Bankstown

Initial Survey : Noel Arnold & Associates : 18 - Mar - 2008
Register Issue Date : 23 - Mar - 2017



2017

Product	Material Description	Extent	Location Reference	Material Condition	Risk Status	Control Priority
Sample No					Test Result	

B001 - Administration/General Learning - 1959 - Concrete (Concrete)

Exterior

Eaves Linings	Flat AC Sheeting	200m2	All surfaces	Good Condition (1)	Low (1)	Low Priority (2-3)
	Assumed Asbestos					
Gable verge lining	Flat AC Sheeting	30m	East facing, West facing	Good Condition (1)	Low (1)	Low Priority (2-3)
	Assumed Asbestos					
Ceiling Voids	Requires Inspection					
Underfloor Voids	Requires Inspection					

Interior

B001 - R0001 - Deputy Principal	No Asbestos					
B001 - R0002 - General Storeroom	No Asbestos					
B001 - R0003 - Deputy Principal	No Asbestos					
B001 - R0004 - Staff Toilet	No Asbestos					
B001 - R0005 - Movement	No Asbestos					
B001 - R0006 - Staff Room Annexe	No Asbestos					
B001 - R0007 - Distribution Board	Note: No inspection of live electrical installation.					
B001 - R0008 - Principal	No Asbestos					
B001 - R0010 - Plant	No Asbestos					
B001 - R0011 - Staff Shower/Change	No Asbestos					
B001 - R0012 - Staff Toilet	No Asbestos					
B001 - R0013 - Sick Bay	No Asbestos					
B001 - R0014 - Clerical Office	No Asbestos					
B001 - R0015 - Movement	No Asbestos					
B001 - R0016 - Entry Vestibule	No Asbestos					
B001 - R0017 - Movement	No Asbestos					
B001 - R0018 - Duplicating Workroom	No Asbestos					
B001 - R0019 - Staff Room	No Asbestos					
B001 - R0020 - Staff Kitchen	No Asbestos					
B001 - R0021 - Cleaning Distributed Store	No Asbestos					

Product	Material Description	Extent	Location Reference	Material Condition	Risk Status	Control Priority
Sample No					Test Result	
Floor Coverings Res/Textile	Vinyl Tiles	4m2	All surfaces	Good Condition (1)	Low (1)	Low Priority (2-3)
4217/B001/R0021/Floor Coverings Res/Textile/S7					Chrysotile (white asbestos)	

- B001 - R0022 - Movement**
No Asbestos
- B001 - R0023 - Movement**
No Asbestos
- B001 - R0024 - General Storeroom**
No Asbestos
- B001 - R0025 - Home Base Store**
No Asbestos
- B001 - R0026 - Home Base**
No Asbestos
- B001 - R0027 - Home Base**
No Asbestos
- B001 - R0028 - Home Base Store**
No Asbestos
- B001 - R0029 - Craft Store**
No Asbestos
- B001 - R0030 - Movement**
No Asbestos
- B001 - R0031 - Movement**
No Asbestos
- B001 - R0032 - Craft Store**
No Asbestos
- B001 - R0033 - Home Base Store**
No Asbestos
- B001 - R0034 - Home Base**
No Asbestos
- B001 - R0035 - Covered Outdoor Learning Area**
No Asbestos

2017

Product	Material Description	Extent	Location Reference	Material Condition	Risk Status	Control Priority
Sample No					Test Result	

B002 - General Learning - 1959 - Concrete Framed (Concrete Framed)

Exterior

Eaves Linings	Flat AC Sheeting	80m2	All surfaces	Good Condition (1)	Low (1)	Low Priority (2-3)
	Assumed Asbestos					
Gable verge lining	Flat AC Sheeting	25m	East facing, West facing	Good Condition (1)	Low (1)	Low Priority (2-3)
	Assumed Asbestos					
Ceiling Voids	Requires Inspection					
Underfloor Voids	Requires Inspection					

Interior

B002 - R0001 - Movement

No Asbestos

B002 - R0002 - Movement

No Asbestos

B002 - R0003 - General Storeroom

No Asbestos

B002 - R0004 - Home Base Store

No Asbestos

B002 - R0005 - Home Base

No Asbestos

B002 - R0006 - Home Base

No Asbestos

B002 - R0007 - Home Base Store

No Asbestos

B002 - R0008 - Personal Effects Storage

No Asbestos

B002 - R0009 - Movement

No Asbestos

B002 - R0010 - Movement

No Asbestos

B002 - R0011 - Music Store

No Asbestos

B002 - R0012 - Home Base Store

No Asbestos

B002 - R0013 - Home Base

No Asbestos

2017

Product	Material Description	Extent	Location Reference	Material Condition	Risk Status	Control Priority
Sample No					Test Result	

B003 - Library - 1959 - Brick/Block (Brick/Block)**Exterior**

Gable verge lining	Flat AC Sheeting	30m	East facing, West facing	Good Condition (1)	Low (1)	Low Priority (2-3)
	Assumed Asbestos					
Eaves Linings	Flat AC Sheeting	80m2	All surfaces	Good Condition (1)	Low (1)	Low Priority (2-3)
	Assumed Asbestos					
In-fill panel below window	Flat AC Sheeting 4217/B003/R0019/Infill panel below window/S5					No Asbestos Detected
Ceiling Voids	Requires Inspection					
Underfloor Voids	Requires Inspection					

Interior**B003 - R0001 - Canteen Office/Store**

Ceiling Structures/Linings	Flat AC Sheeting	3m2	All surfaces	Good Condition (1)	Low (1)	Low Priority (2-3)
	4217/B007/R0001/Ceiling Structures/Linings/S3					Chrysotile (white asbestos) , Amosite (brown asbestos)

B003 - R0002 - Canteen Office/Store

Ceiling Structures/Linings	Flat AC Sheeting	3m2	All surfaces	Good Condition (1)	Low (1)	Low Priority (2-3)
	4217/B007/R0001/Ceiling Structures/Linings/S3					Chrysotile (white asbestos) , Amosite (brown asbestos)

B003 - R0004 - Canteen

Ceiling Structures/Linings	Flat AC Sheeting	19m2	All surfaces	Good Condition (1)	Low (1)	Low Priority (2-3)
	4217/B007/R0001/Ceiling Structures/Linings/S3					Chrysotile (white asbestos) , Amosite (brown asbestos)

B003 - R0005 - Movement

Ceiling Structures/Linings	Flat AC Sheeting	24m2	All surfaces	Good Condition (1)	Low (1)	Low Priority (2-3)
	4217/B003/R0019/Ceiling Structures/Linings/S4					Chrysotile (white asbestos) , Amosite (brown asbestos)

B003 - R0007 - Movement

No Asbestos

B003 - R0008 - Staff Room Annexe

No Asbestos

B003 - R0010 - General Storeroom

No Asbestos

B003 - R0011 - Reading Area

No Asbestos

B003 - R0012 - Reading Area

No Asbestos

B003 - R0013 - Library Office/Workroom

Floor Coverings Res/Textile	Vinyl Tiles					
	4217/B003/R0013/Floor Coverings Res/Textile/S6					No Asbestos Detected

B003 - R0014 - Home Base

No Asbestos

B003 - R0015 - Home Base Store

No Asbestos

B003 - R0017 - Personal Effects Storage

No Asbestos

B003 - R0019 - Movement

Product	Material Description	Extent	Location Reference	Material Condition	Risk Status	Control Priority
Sample No					Test Result	
Ceiling Structures/Linings	Flat AC Sheeting	76m2	All surfaces	Good Condition (1)	Low (1)	Low Priority (2-3)
	4217/B007/R0001/Ceiling Structures/Linings/S3				Chrysotile (white asbestos) , Amosite (brown asbestos)	
In-fill panel below window	Flat AC Sheeting					No Asbestos Detected
	4217/B003/R0019/Infill panel below window/S5					

2017

Product	Material Description	Extent	Location Reference	Material Condition	Risk Status	Control Priority
Sample No					Test Result	

B004 - General Learning - 1959 - Concrete (Concrete)

Exterior

Eaves Linings	Flat AC Sheeting	200m2	North facing, South facing	Good Condition (1)	Low (1)	Low Priority (2-3)
	Assumed Asbestos					
Gable verge lining	Flat AC Sheeting	30m	East facing, West facing	Good Condition (1)	Low (1)	Low Priority (2-3)
	Assumed Asbestos					
Ceiling Voids	Requires Inspection					
Underfloor Voids	Requires Inspection					

Interior

B004 - R0001 - Staff Toilet

No Asbestos

B004 - R0002 - Movement

No Asbestos

B004 - R0003 - Personal Effects Storage

No Asbestos

B004 - R0005 - Movement

No Asbestos

B004 - R0006 - Toilets - Boys/Girls

No Asbestos

B004 - R0007 - Movement

No Asbestos

B004 - R0008 - Home Base

No Asbestos

B004 - R0009 - Home Base

No Asbestos

B004 - R0010 - Movement

No Asbestos

B004 - R0011 - Movement

No Asbestos

B004 - R0012 - Personal Effects Storage

No Asbestos

B004 - R0013 - Home Base Store

No Asbestos

B004 - R0014 - Home Base

No Asbestos

B004 - R0015 - Community Clinic

No Asbestos

B004 - R0017 - General Storeroom

No Asbestos

B004 - R0018 - Movement

No Asbestos

B004 - R0019 - Movement

No Asbestos

B004 - R0020 - General Storeroom

No Asbestos

B004 - R0021 - Seminar/Study

No Asbestos

B004 - R0022 - Special Programs Room

No Asbestos

Product	Material Description	Extent	Location Reference	Material Condition	Risk Status	Control Priority
Sample No					Test Result	
B004 - R0023 - Home Base						
No Asbestos						
B004 - R0024 - Movement						
No Asbestos						
B004 - R0025 - Movement						
No Asbestos						
B004 - R0026 - Personal Effects Storage						
No Asbestos						
B004 - R0027 - Home Base						
No Asbestos						
B004 - R0028 - Movement						
No Asbestos						
B004 - R0029 - Covered Outdoor Learning Area						
No Asbestos						
B004 - R9001 - General Assistant/Bulk Store						
No Asbestos						
B004 - R9002 - General Assistant/Bulk Store						
No Asbestos						

2017

Product	Material Description	Extent	Location Reference	Material Condition	Risk Status	Control Priority
Sample No					Test Result	

B005 - General Learning - 1968 - Timber (Timber)

Exterior

Eaves Linings	Flat AC Sheeting	80m2	North facing, South facing	Good Condition (1)	Low (1)	Low Priority (2-3)
	4217/B005/R0005/Ceiling Structures/Linings/S2				Chrysotile (white asbestos)	
Ceiling Voids	Requires Inspection					
Underfloor Voids	Requires Inspection					

Interior

B005 - R0001 - Home Base

Wall Linings Internal	Flat AC Sheeting	2m2	South facing, West facing	Good Condition (1)	Low (1)	Low Priority (2-3)
	4217/B005/R0003/Wall Linings Internal/S1				Chrysotile (white asbestos) , Amosite (brown asbestos)	

B005 - R0002 - Home Base

Wall Linings Internal	Flat AC Sheeting	2m2	South facing, West facing	Good Condition (1)	Low (1)	Low Priority (2-3)
	4217/B005/R0003/Wall Linings Internal/S1				Chrysotile (white asbestos) , Amosite (brown asbestos)	

B005 - R0003 - Home Base

Wall Linings Internal	Flat AC Sheeting	2m2	South facing, West facing	Good Condition (1)	Low (1)	Low Priority (2-3)
	4217/B005/R0003/Wall Linings Internal/S1				Chrysotile (white asbestos) , Amosite (brown asbestos)	

B005 - R0004 - Special Programs Room

Wall Linings Internal	Flat AC Sheeting	2m2	South facing, West facing	Good Condition (1)	Low (1)	Low Priority (2-3)
	4217/B005/R0003/Wall Linings Internal/S1				Chrysotile (white asbestos) , Amosite (brown asbestos)	

B005 - R0005 - Movement

Ceiling Structures/Linings	Flat AC Sheeting	66m2	All surfaces	Good Condition (1)	Low (1)	Low Priority (2-3)
	4217/B005/R0005/Ceiling Structures/Linings/S2				Chrysotile (white asbestos)	

2017

Product	Material Description	Extent	Location Reference	Material Condition	Risk Status	Control Priority
Sample No				Test Result		

B006 - Pupil Facilities - 1959 - Concrete (Concrete)

Exterior

Eaves Linings	Flat AC Sheeting	40m2	All surfaces	Good Condition (1)	Low (1)	Low Priority (2-3)
	Assumed Asbestos					
Gable verge lining	Flat AC Sheeting	15m	East facing, West facing	Good Condition (1)	Low (1)	Low Priority (2-3)
	Assumed Asbestos					
Gable Ends	Flat AC Sheeting	10m2	North facing, South facing	Good Condition (1)	Low (1)	Low Priority (2-3)
	Assumed Asbestos					
In-fill panel above door	Flat AC Sheeting	1m2	South facing	Good Condition (1)	Low (1)	Low Priority (2-3)
	4217/B006/R0010/Infill above door/S9			Clerical Error - No Sample Taken		
Ceiling Voids	Requires Inspection					
Underfloor Voids	Requires Inspection					

Interior

B006 - R0003 - Garden Store

Ceiling Structures/Linings	Flat AC Sheeting	4217/B006/R0010/Ceiling Structures/Linings/S8				No Asbestos Detected
----------------------------	------------------	---	--	--	--	-----------------------------

B006 - R0005 - Garden Store

Ceiling Structures/Linings	Flat AC Sheeting	4217/B006/R0010/Ceiling Structures/Linings/S8				No Asbestos Detected
----------------------------	------------------	---	--	--	--	-----------------------------

In-fill panel above door	Flat AC Sheeting	4217/B006/R0010/Ceiling Structures/Linings/S8				No Asbestos Detected
--------------------------	------------------	---	--	--	--	-----------------------------

B006 - R0006 - General Assistant/Bulk Store

Ceiling Structures/Linings	Flat AC Sheeting	4217/B006/R0010/Ceiling Structures/Linings/S8				No Asbestos Detected
----------------------------	------------------	---	--	--	--	-----------------------------

B006 - R0007 - General Assistant/Bulk Store

Ceiling Structures/Linings	Flat AC Sheeting	4217/B006/R0010/Ceiling Structures/Linings/S8				No Asbestos Detected
----------------------------	------------------	---	--	--	--	-----------------------------

B006 - R0008 - General Assistant/Bulk Store

Ceiling Structures/Linings	Flat AC Sheeting	4217/B006/R0010/Ceiling Structures/Linings/S8				No Asbestos Detected
----------------------------	------------------	---	--	--	--	-----------------------------

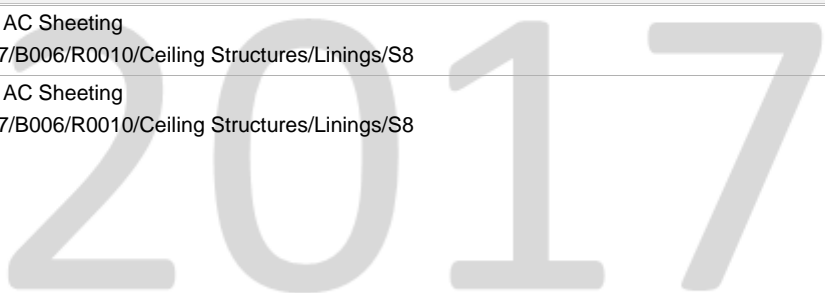
B006 - R0009 - General Assistant/Bulk Store

Ceiling Structures/Linings	Flat AC Sheeting	4217/B006/R0010/Ceiling Structures/Linings/S8				No Asbestos Detected
----------------------------	------------------	---	--	--	--	-----------------------------

B006 - R0010 - Sports Store

Ceiling Structures/Linings	Flat AC Sheeting	4217/B006/R0010/Ceiling Structures/Linings/S8				No Asbestos Detected
----------------------------	------------------	---	--	--	--	-----------------------------

In-fill panel above door	Flat AC Sheeting	4217/B006/R0010/Ceiling Structures/Linings/S8				No Asbestos Detected
--------------------------	------------------	---	--	--	--	-----------------------------



Product	Material Description	Extent	Location Reference	Material Condition	Risk Status	Control Priority
Sample No				Test Result		

B007 - Pupil Facilities - 1959 - Concrete (Concrete)

Exterior

Eaves Linings	Flat AC Sheeting	40m2	All surfaces	Good Condition (1)	Low (1)	Low Priority (2-3)
Assumed Asbestos						
Gable verge lining	Flat AC Sheeting	15m	East facing, West facing	Good Condition (1)	Low (1)	Low Priority (2-3)
Assumed Asbestos						
Gable Ends	Flat AC Sheeting	10m2	East facing, West facing	Good Condition (1)	Low (1)	Low Priority (2-3)
4217/B007/R0001/Ceiling Structures/Linings/S3				Chrysotile (white asbestos) , Amosite (brown asbestos)		
Ceiling Voids	Requires Inspection					
Underfloor Voids	Requires Inspection					

Interior

B007 - R0001 - Drinking Facilities

Ceiling Structures/Linings	Flat AC Sheeting	19m2	All surfaces	Good Condition (1)	Low (1)	Low Priority (2-3)
4217/B007/R0001/Ceiling Structures/Linings/S3				Chrysotile (white asbestos) , Amosite (brown asbestos)		

B007 - R0002 - Toilets - Girls

Ceiling Structures/Linings	Flat AC Sheeting	18m2	All surfaces	Good Condition (1)	Low (1)	Low Priority (2-3)
4217/B007/R0001/Ceiling Structures/Linings/S3				Chrysotile (white asbestos) , Amosite (brown asbestos)		

B007 - R0003 - Toilets - Boys

Ceiling Structures/Linings	Flat AC Sheeting	16m2	All surfaces	Good Condition (1)	Low (1)	Low Priority (2-3)
4217/B007/R0001/Ceiling Structures/Linings/S3				Chrysotile (white asbestos) , Amosite (brown asbestos)		

B007 - R0004 - Drinking Facilities

Ceiling Structures/Linings	Flat AC Sheeting	19m2	All surfaces	Good Condition (1)	Low (1)	Low Priority (2-3)
4217/B007/R0001/Ceiling Structures/Linings/S3				Chrysotile (white asbestos) , Amosite (brown asbestos)		

B007 - R0005 - Cleaning Distributed Store

Ceiling Structures/Linings	Flat AC Sheeting	2m2	All surfaces	Good Condition (1)	Low (1)	Low Priority (2-3)
4217/B007/R0001/Ceiling Structures/Linings/S3				Chrysotile (white asbestos) , Amosite (brown asbestos)		

2017

Product	Material Description	Extent	Location Reference	Material Condition	Risk Status	Control Priority
Sample No					Test Result	

B009 - Pupil Facilities - 2002 - Timber (Timber)

Exterior

Ceiling Voids	No Asbestos Found
Underfloor Voids	Requires Inspection

Interior

B009 - R0001 - Movement

No Asbestos

2017

Product	Material Description	Extent	Location Reference	Material Condition	Risk Status	Control Priority
Sample No					Test Result	

B010 - Pupil Facilities - 2002 - Brick/Veneer (Brick/Veneer)

Exterior

Ceiling Voids	No Asbestos Found
Underfloor Voids	Requires Inspection

Interior

B010 - R0001 - Toilets - Girls

No Asbestos

B010 - R0002 - Toilets - Boys

No Asbestos

B010 - R0003 - Disabled Toilet

No Asbestos

B010 - R0004 - Movement

No Asbestos

2017

Product	Material Description	Extent	Location Reference	Material Condition	Risk Status	Control Priority
	Sample No					Test Result

B011 - Communal Facilities - 2010 - Brick/Veneer (Brick/Veneer)

Exterior

Ceiling Voids	No Asbestos Found
Underfloor Voids	Requires Inspection

Interior

B011 - R0001 - Communal Space

No Asbestos

B011 - R0002 - Raised Platform

No Asbestos

B011 - R0003 - Hall Chair Store

No Asbestos

B011 - R0004 - Communal/Performance Store

No Asbestos

B011 - R0005 - P.E. Store

No Asbestos

B011 - R0006 - Toilet - Lobby

No Asbestos

B011 - R0007 - Toilets - Girls

No Asbestos

B011 - R0008 - No Access

No Asbestos

B011 - R0009 - Toilet - Lobby

No Asbestos

B011 - R0010 - Toilets - Boys

No Asbestos

B011 - R0011 - Cleaning Distributed Store

No Asbestos

B011 - R0012 - General Storeroom

No Asbestos

B011 - R0013 - Main Switch Board

No Asbestos

B011 - R0014 - Access Shower/Toilet/Change

No Asbestos

B011 - R0015 - Covered Outdoor Learning Area

No Asbestos

B011 - R0016 - Movement

No Asbestos

B011 - R0017 - Movement

No Asbestos

B011 - R0018 - Canteen

No Asbestos

B011 - R0019 - Canteen Office/Store

No Asbestos

B011 - R0020 - Ramp

No Asbestos

Product	Material Description	Extent	Location Reference	Material Condition	Risk Status	Control Priority
Sample No					Test Result	

Demountables

Demountable details as per the AMS records as of 15 Feb 2017.

OS 602 - D11464 - Learning Unit - Standard With P.A.A. : Placement Date - 26/03/2013

Note: This refurbished demountable may have asbestos present in remnant mastic in window frames.

Exterior

No Asbestos Found.

Interior

R1 - Learning space/withdrawal/entry

No Asbestos Found.

R2 - Home Base Store

No Asbestos Found.

OS 602 - D11637 - Learning Unit - Standard With P.A.A. : Placement Date - 13/12/2012

Note: This refurbished demountable may have asbestos present in remnant mastic in window frames.

Exterior

No Asbestos Found.

Interior

R1 - Learning space/withdrawal/entry

No Asbestos Found.

R2 - Home Base Store

No Asbestos Found.

OS 602 - D11679 - Learning Unit - Standard With P.A.A. : Placement Date - 28/12/2016

Note: This refurbished demountable may have asbestos present in remnant mastic in window frames.

Exterior

No Asbestos Found.

Interior

R1 - Learning space/withdrawal/entry

No Asbestos Found.

R2 - Home Base Store

No Asbestos Found.

OS 602 - D12546 - Learning Unit - Standard With P.A.A. : Placement Date - 21/02/2013

Note: This refurbished demountable may have asbestos present in remnant mastic in window frames.

Exterior

No Asbestos Found.

Interior

R1 - Learning space/withdrawal/entry

No Asbestos Found.

R2 - Home Base Store

No Asbestos Found.

OS 602 - D12813 - Learning Unit - Standard With P.A.A. : Placement Date - 26/09/2013

Note: This refurbished demountable may have asbestos present in remnant mastic in window frames.

Exterior

No Asbestos Found.

Product	Material Description	Extent	Location Reference	Material Condition	Risk Status	Control Priority
Sample No					Test Result	
Interior						
R1 - Learning space/withdrawal/entry						
No Asbestos Found.						
R2 - Home Base Store						
No Asbestos Found.						
OS 603 - D15834 - Learning Unit - Standard With P.A.A. A/C : Placement Date - 28/11/2013						
Note: This refurbished demountable may have asbestos present in remnant mastic in window frames.						
Exterior						
No Asbestos Found.						
Interior						
R1 - Learning space/withdrawal/entry						
No Asbestos Found.						
R2 - Home Base Store						
No Asbestos Found.						
OS 602 - D15984 - Learning Unit - Standard With P.A.A. : Placement Date - 26/09/2016						
Exterior						
No Asbestos Found.						
Interior						
R1 - Learning space/withdrawal/entry						
No Asbestos Found.						
R2 - Home Base Store						
No Asbestos Found.						
OS 750 - D17819 - Learning Unit - ESL : Placement Date - 11/03/2016						
Note: This refurbished demountable may have asbestos present in remnant mastic in window frames.						
Exterior						
No Asbestos Found.						
Interior						
R1 - Esl						
No Asbestos Found.						

2017

Product	Material Description	Extent	Location Reference	Material Condition	Risk Status	Control Priority
Sample No					Test Result	

Listing of Electronic Attachments as of 22/03/2017

Available Asbestos Related Electronic Files

4217_ASB_150514_AMP.pdf

* Note : Refer to AMS for details of the attachment(s).

2017