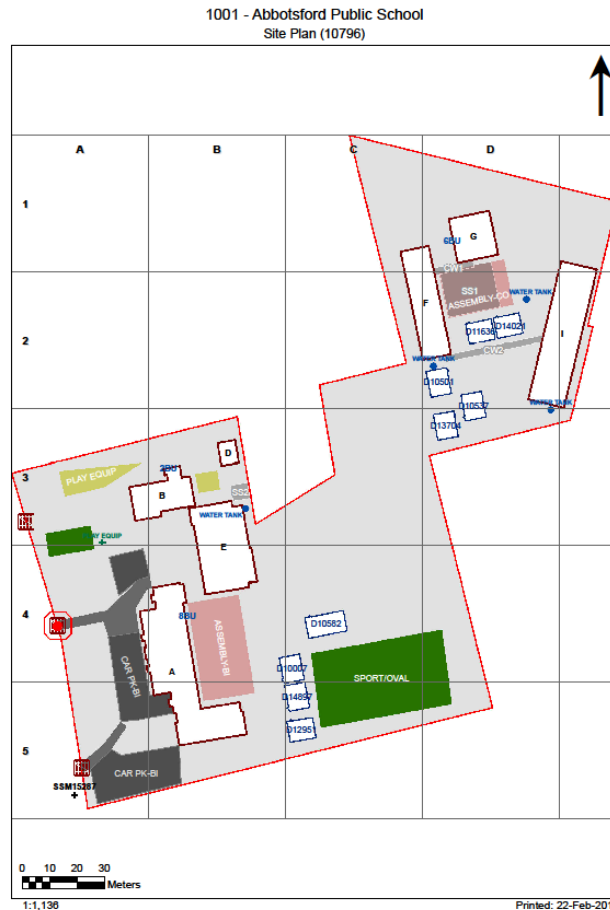


# Asbestos Register

(Hazardous Materials and Risk Assessment)

**School :** Abbotsford Public School (1001)  
**Region :** Sydney  
**State Electorate :** Drummoyne  
**Local Government Area :** Canada Bay

**Initial Survey :** Noel Arnold & Associates : 10 - Mar - 2008  
**Reviewed By :** AECOM : 26 - May - 2015



# 2017

Product	Material Description	Extent	Location Reference	Material Condition	Risk Status	Control Priority
Sample No					Test Result	

**B00A - General Learning/Library - 1924 - Brick/Block (Brick/Block)****Exterior**

Eaves Linings	Flat AC Sheeting	50m2	Variable positions	Good Condition (1)	Low (1)	Low Priority (2-3)
<b>Assumed Asbestos - Height Restriction - Height</b>						

Ceiling Voids No Asbestos Found

Underfloor Voids No Asbestos Found

**Interior****B00A - R0001 - Movement (8.2 m2)**

No Asbestos

**B00A - R0002 - Movement (13.43 m2)**

No Asbestos

**B00A - R0003 - Canteen Office/Store (2.76 m2)**

No Asbestos

**B00A - R0004 - Canteen Office/Store (2.8 m2)**

Floor Coverings Res/Textile	Vinyl Tiles				
	1001/B00H/R0003/Floor Coverings Res/Textile/S1	<b>No Asbestos Detected</b>			

**B00A - R0005 - Canteen Office/Store (3.35 m2)**

Floor Coverings Res/Textile	Vinyl Tiles				
	1001/B00H/R0003/Floor Coverings Res/Textile/S1	<b>No Asbestos Detected</b>			

**B00A - R0006 - Canteen (22.5 m2)**

Floor Coverings Res/Textile	Vinyl Tiles				
	1001/B00H/R0003/Floor Coverings Res/Textile/S1	<b>No Asbestos Detected</b>			

**B00A - R0007 - General Storeroom (10.1 m2)**

Floor Coverings Res/Textile	Vinyl Tiles				
	1001/B00H/R0003/Floor Coverings Res/Textile/S1	<b>No Asbestos Detected</b>			

**B00A - R0008 - Movement (5.37 m2)**

Floor Coverings Res/Textile	Vinyl Tiles				
	1001/B00H/R0003/Floor Coverings Res/Textile/S1	<b>No Asbestos Detected</b>			

**B00A - R0009 - Staff Room (31.27 m2)**

No Asbestos

**B00A - R0010 - Sick Bay (10.65 m2)**

No Asbestos

**B00A - R0011 - Movement (4.78 m2)**

No Asbestos

**B00A - R0012 - Principal (32.03 m2)**

No Asbestos

**B00A - R0013 - Home Base (47.89 m2)**

No Asbestos

**B00A - R0014 - Home Base (47.18 m2)**

No Asbestos

**B00A - R0015 - Home Base (47.15 m2)**

No Asbestos

**B00A - R0016 - Movement (55.58 m2)**

Product	Material Description	Extent	Location Reference	Material Condition	Risk Status	Control Priority
Sample No					Test Result	
Wall Linings Internal	Flat AC Sheeting	4m2	Below windows	Good Condition (1)	Low (1)	Low Priority (2-3)
1001/B00A/R0023/Wall Linings Internal/S4					<b>Chrysotile (white asbestos)</b>	
<b>B00A - R0017 - Disabled Toilet (4.65 m2)</b>						
Ceiling Structures/Linings	Flat AC Sheeting					
1001/B00A/R0017/Ceiling Structures/Linings/S5					<b>No Asbestos Detected</b>	
<b>B00A - R0018 - Toilets - Boys (18.06 m2)</b>						
Ceiling Structures/Linings	Flat AC Sheeting					
1001/B00A/R0017/Ceiling Structures/Linings/S5					<b>No Asbestos Detected</b>	
<b>B00A - R0019 - Toilets - Girls (22.67 m2)</b>						
Ceiling Structures/Linings	Flat AC Sheeting					
1001/B00A/R0019/Ceiling Structures/Linings/S6					<b>No Asbestos Detected</b>	
<b>B00A - R0020 - Reading Area (113.98 m2)</b>						
Ceiling Structures/Linings	Vermiculite					
1001/B00A/R0020/Ceiling Structures/Linings/S3					<b>Limited Samples Taken</b>	
<i>Vermiculite Ceilings may contain asbestos. Asbestos testing MUST be conducted prior to any disturbance works</i>						
<b>B00A - R0021 - Library Office/Workroom (13.49 m2)</b>						
Ceiling Structures/Linings	Vermiculite					
1001/B00A/R0020/Ceiling Structures/Linings/S3					<b>Limited Samples Taken</b>	
<i>Vermiculite Ceilings may contain asbestos. Asbestos testing MUST be conducted prior to any disturbance works</i>						
<b>B00A - R0022 - Library Office/Workroom (13.42 m2)</b>						
Ceiling Structures/Linings	Vermiculite					
1001/B00A/R0020/Ceiling Structures/Linings/S3					<b>Limited Samples Taken</b>	
<i>Vermiculite Ceilings may contain asbestos. Asbestos testing MUST be conducted prior to any disturbance works</i>						
<b>B00A - R0023 - Movement (29.12 m2)</b>						
Ceiling Structures/Linings	Vermiculite					
1001/B00A/R0020/Ceiling Structures/Linings/S3					<b>Limited Samples Taken</b>	
<i>Vermiculite Ceilings may contain asbestos. Asbestos testing MUST be conducted prior to any disturbance works</i>						
Wall Linings Internal	Flat AC Sheeting	4m2	Below windows	Good Condition (1)	Low (1)	Low Priority (2-3)
1001/B00A/R0023/Wall Linings Internal/S4					<b>Chrysotile (white asbestos)</b>	
Floor Coverings Res/Textile	Vinyl Tiles					
1001/B00H/R0003/Floor Coverings Res/Textile/S1					<b>No Asbestos Detected</b>	
<b>B00A - R0024 - Movement (101 m2)</b>						
Floor Coverings Res/Textile	Vinyl Tiles					
1001/B00H/R0003/Floor Coverings Res/Textile/S1					<b>No Asbestos Detected</b>	
<b>B00A - R0025 - Movement (1.95 m2)</b>						
No Asbestos						
<b>B00A - R0026 - Staff Toilet (3.67 m2)</b>						
No Asbestos						
<b>B00A - R0027 - Interview (8.71 m2)</b>						
No Asbestos						
<b>B00A - R0028 - Movement (18.33 m2)</b>						
Floor Coverings Res/Textile	Vinyl Tiles					
1001/B00H/R0003/Floor Coverings Res/Textile/S1					<b>No Asbestos Detected</b>	
<b>B00A - R0029 - Cleaning Distributed Store (5.18 m2)</b>						
No Asbestos						
<b>B00A - R0030 - Reading Area (27.84 m2)</b>						
No Asbestos						
<b>B00A - R0031 - Movement (1.38 m2)</b>						

Product	Material Description	Extent	Location Reference	Material Condition	Risk Status	Control Priority
Sample No					Test Result	
No Asbestos						
<b>B00A - R0032 - Duplicating Workroom (18.88 m2)</b>						
No Asbestos						
<b>B00A - R0033 - General Storeroom (3.03 m2)</b>						
Floor Coverings Res/Textile	Vinyl Tiles					
1001/B00H/R0003/Floor Coverings Res/Textile/S1					<b>No Asbestos Detected</b>	
<b>B00A - R0034 - Clerical Office (21.9 m2)</b>						
No Asbestos						
<b>B00A - R0035 - Movement (1.35 m2)</b>						
No Asbestos						
<b>B00A - R0036 - Entry Vestibule (20.79 m2)</b>						
No Asbestos						
<b>B00A - R0037 - Cleaning Distributed Store (5.15 m2)</b>						
No Asbestos						
<b>B00A - R0038 - Movement (2.54 m2)</b>						
No Asbestos						
<b>B00A - R0039 - Sports Store (7.91 m2)</b>						
Floor Coverings Res/Textile	Vinyl Tiles					
1001/B00H/R0003/Floor Coverings Res/Textile/S1					<b>No Asbestos Detected</b>	
<b>B00A - R0040 - Staff Toilet (4.41 m2)</b>						
No Asbestos						
<b>B00A - R0041 - Movement (2.14 m2)</b>						
No Asbestos						
<b>B00A - R0042 - Clerical Office/Workroom (6.24 m2)</b>						
No Asbestos						
<b>B00A - R0043 - Stairs (7.03 m2)</b>						
Floor Coverings Res/Textile	Vinyl Tiles					
1001/B00H/R0003/Floor Coverings Res/Textile/S1					<b>No Asbestos Detected</b>	
<b>B00A - R0044 - Stairs (7.2 m2)</b>						
Floor Coverings Res/Textile	Vinyl Tiles					
1001/B00H/R0003/Floor Coverings Res/Textile/S1					<b>No Asbestos Detected</b>	
<b>B00A - R1001 - Home Base (48.05 m2)</b>						
No Asbestos						
<b>B00A - R1002 - Home Base (50.22 m2)</b>						
No Asbestos						
<b>B00A - R1003 - Home Base (49.57 m2)</b>						
No Asbestos						
<b>B00A - R1004 - Home Base (51.13 m2)</b>						
No Asbestos						
<b>B00A - R1005 - Home Base (49.29 m2)</b>						
No Asbestos						
<b>B00A - R1006 - Home Base (47.95 m2)</b>						
No Asbestos						
<b>B00A - R1007 - Movement (46.71 m2)</b>						
Floor Coverings Res/Textile	Vinyl Tiles					
1001/B00H/R0003/Floor Coverings Res/Textile/S1					<b>No Asbestos Detected</b>	

Product	Material Description	Extent	Location Reference	Material Condition	Risk Status	Control Priority
Sample No					Test Result	
<b>B00A - R1008 - Craft Store (9.67 m2)</b>						
Floor Coverings Res/Textile	Vinyl Tiles					
	1001/B00H/R0003/Floor Coverings Res/Textile/S1					No Asbestos Detected
<b>B00A - R1010 - Communal Space (111.42 m2)</b>						
Floor Coverings Res/Textile	Vinyl Tiles					
	1001/B00H/R0003/Floor Coverings Res/Textile/S1					No Asbestos Detected
<b>B00A - R1011 - General Storeroom (15.2 m2)</b>						
Floor Coverings Res/Textile	Vinyl Tiles					
	1001/B00H/R0003/Floor Coverings Res/Textile/S1					No Asbestos Detected
<b>B00A - R1012 - Deputy Principal (9.77 m2)</b>						
No Asbestos						
<b>B00A - R1013 - Movement (35.02 m2)</b>						
Floor Coverings Res/Textile	Vinyl Tiles					
	1001/B00H/R0003/Floor Coverings Res/Textile/S1					No Asbestos Detected
<b>B00A - R1014 - General Storeroom (12.36 m2)</b>						
Floor Coverings Res/Textile	Vinyl Tiles					
	1001/B00H/R0003/Floor Coverings Res/Textile/S1					No Asbestos Detected
<b>B00A - R1015 - Stairs (11.9 m2)</b>						
Floor Coverings Res/Textile	Vinyl Tiles					
	1001/B00H/R0003/Floor Coverings Res/Textile/S1					No Asbestos Detected
<b>B00A - R1016 - Stairs (11.9 m2)</b>						
Floor Coverings Res/Textile	Vinyl Tiles					
	1001/B00H/R0003/Floor Coverings Res/Textile/S1					No Asbestos Detected
<b>B00A - R1017 - Interview (5.09 m2)</b>						
No Asbestos						
<b>B00A - R1018 - General Storeroom (11.43 m2)</b>						
No Asbestos						

2017

Product	Material Description	Extent	Location Reference	Material Condition	Risk Status	Control Priority
Sample No					Test Result	

**B00B - Other-After School Care - 1924 - Brick/Block (Brick/Block)****Exterior**

Ceiling Voids	No Asbestos Found
Underfloor Voids - Slab on Ground	No Asbestos Found

**Interior****B00B - R0001 - Out Of School Hours Care Centre (57.71 m2)**

No Asbestos

**B00B - R0002 - Out Of School Hours Care Centre (1.4 m2)**

No Asbestos

**B00B - R0003 - Out Of School Hours Care Centre (1.53 m2)**

No Asbestos

**B00B - R0004 - Out Of School Hours Care Centre (29.7 m2)**

No Asbestos

**B00B - R0005 - Out Of School Hours Care Centre (2.64 m2)**

No Asbestos

**B00B - R0006 - Out Of School Hours Care Centre (9.18 m2)**

No Asbestos

**B00B - R0007 - Out Of School Hours Care Centre (18.03 m2)**

No Asbestos

**B00B - R0008 - Out Of School Hours Care Centre (17.99 m2)**

No Asbestos

**B00B - R0009 - Out Of School Hours Care Centre (28.94 m2)**

No Asbestos

**B00B - R0010 - Out Of School Hours Care Centre (10.79 m2)**

No Asbestos

**B00B - R0011 - Out Of School Hours Care Centre (20.26 m2)**

No Asbestos

**B00B - R0012 - Out Of School Hours Care Centre (13.39 m2)**

No Asbestos

**B00B - R0013 - Out Of School Hours Care Centre (14.86 m2)**

No Asbestos

**B00B - R0014 - Out Of School Hours Care Centre (7.42 m2)**

Floor Coverings Res/Textile	Vinyl Tiles
	1001/B00H/R0003/Floor Coverings Res/Textile/S1

**No Asbestos Detected****B00B - R0015 - Out Of School Hours Care Centre (4.06 m2)**

No Asbestos

**B00B - R0016 - Toilets - Boys (1.52 m2)**

No Asbestos

**B00B - R0017 - Toilet - Lobby (3.34 m2)**

No Asbestos

**B00B - R0018 - Toilets - Boys (1.73 m2)**

No Asbestos

**B00B - R0019 - Toilets - Girls (5.66 m2)**

No Asbestos

**B00B - R0020 - External Movement (7.75 m2)**

No Asbestos

Product	Material Description	Extent	Location Reference	Material Condition	Risk Status	Control Priority
Sample No					Test Result	

**B00D - Other-After School Care - 1975 - Steel (Steel)**

**Exterior**

Ceiling Voids - Raked Ceiling      No Asbestos Found

Underfloor Voids - Slab on Ground      No Asbestos Found

**Interior**

**B00D - R0001 - Out Of School Hours Care Centre (36.07 m2)**

No Asbestos

**B00D - R0002 - Out Of School Hours Care Centre (18.76 m2)**

No Asbestos

2017

Product	Material Description	Extent	Location Reference	Material Condition	Risk Status	Control Priority
Sample No					Test Result	

**B00E - Communal Facilities - 2002 - Brick/Veneer (Brick/Veneer)**

**Exterior**

Ceiling Voids	No Asbestos Found
Underfloor Voids	No Asbestos Found

**Interior**

**B00E - R0001 - Communal Space (235.01 m2)**

No Asbestos

**B00E - R0002 - Communications Room (0.59 m2)**

No Asbestos

**B00E - R0003 - Distribution Board (1.04 m2)**

Note: No inspection of live electrical installation.

No Asbestos

**B00E - R0004 - Staff Kitchen (10.61 m2)**

No Asbestos

**B00E - R0005 - Cleaning Distributed Store (3.87 m2)**

No Asbestos

**B00E - R0006 - Access Shower/Toilet (4.73 m2)**

No Asbestos

**B00E - R0007 - P.E. Store (29.15 m2)**

No Asbestos

**B00E - R0008 - Raised Platform (78 m2)**

No Asbestos

**B00E - R0009 - Movement (201.25 m2)**

No Asbestos

2017



Product	Material Description	Extent	Location Reference	Material Condition	Risk Status	Control Priority
Sample No					Test Result	

**B00F - General Learning/Administration - 1972 - Brick/Block (Brick/Block)****Exterior**

Gable verge lining	Flat AC Sheeting	20m	North facing, South facing	Good Condition (1)	Low (1)	Low Priority (2-3)
	1001/B00F/Gable verge lining/S7					<b>Chrysotile (white asbestos)</b>
Wall Cladding	Flat AC Sheeting	10m2	Below windows	Good Condition (1)	Low (1)	Low Priority (2-3)
	1001/B00F/R0018/Wall Linings Internal/S8					<b>Chrysotile (white asbestos)</b>
Ceiling Voids	No Asbestos Found					
Underfloor Voids	No Asbestos Found					

**Interior****B00F - R0001 - Staff Room (20.52 m2)**

Floor Coverings Res/Textile	Vinyl Tiles					
	1001/B00H/R0003/Floor Coverings Res/Textile/S1					<b>No Asbestos Detected</b>

**B00F - R0002 - Staff Toilet (3.99 m2)**

No Asbestos

**B00F - R0003 - Movement (13.75 m2)**

Floor Coverings Res/Textile	Vinyl Tiles					
	1001/B00H/R0003/Floor Coverings Res/Textile/S1					<b>No Asbestos Detected</b>

**B00F - R0004 - Distribution Board (1.05 m2)**

Note: No inspection of live electrical installation.

Ceiling Structures/Linings	Flat AC Sheeting	2m2	All surfaces	Minimal Damage (2)	Low (1)	Low Priority (2-3)
	1001/B00F/R0004/Ceiling Structures/Linings/S2					<b>Chrysotile (white asbestos)</b>

**B00F - R0005 - Cleaning Distributed Store (3.93 m2)**

Floor Coverings Res/Textile	Vinyl Tiles					
	1001/B00H/R0003/Floor Coverings Res/Textile/S1					<b>No Asbestos Detected</b>

**B00F - R0006 - General Storeroom (17.49 m2)**

Floor Coverings Res/Textile	Vinyl Tiles					
	1001/B00H/R0003/Floor Coverings Res/Textile/S1					<b>No Asbestos Detected</b>

**B00F - R0007 - General Storeroom (12.24 m2)**

Floor Coverings Res/Textile	Vinyl Tiles					
	1001/B00H/R0003/Floor Coverings Res/Textile/S1					<b>No Asbestos Detected</b>

**B00F - R0008 - Entry Vestibule (11.22 m2)**

No Asbestos

**B00F - R0009 - Movement (3.39 m2)**

No Asbestos

**B00F - R0010 - Deputy Principal (15.02 m2)**

No Asbestos

**B00F - R0011 - Staff Toilet (4.71 m2)**

No Asbestos

**B00F - R0012 - Practical Activities - 1hb (18.38 m2)**

Floor Coverings Res/Textile	Vinyl Tiles					
	1001/B00H/R0003/Floor Coverings Res/Textile/S1					<b>No Asbestos Detected</b>

**B00F - R0013 - Home Base (52.63 m2)**

Ceiling Structures/Linings	Vermiculite					
	1001/B00A/R0020/Ceiling Structures/Linings/S3					<b>Limited Samples Taken</b>

**Vermiculite Ceilings may contain asbestos. Asbestos testing MUST be conducted prior to any disturbance works**

Product	Material Description	Extent	Location Reference	Material Condition	Risk Status	Control Priority
Sample No					Test Result	
<b>B00F - R0014 - Home Base (51.87 m2)</b>						
Ceiling Structures/Linings	Vermiculite					
	1001/B00A/R0020/Ceiling Structures/Linings/S3					<b>Limited Samples Taken</b>
<i>Vermiculite Ceilings may contain asbestos. Asbestos testing MUST be conducted prior to any disturbance works</i>						
<b>B00F - R0015 - Practical Activities - 1hb (19.35 m2)</b>						
Floor Coverings Res/Textile	Vinyl Tiles					
	1001/B00H/R0003/Floor Coverings Res/Textile/S1					<b>No Asbestos Detected</b>
<b>B00F - R0016 - Toilets - Girls (27.48 m2)</b>						
No Asbestos						
<b>B00F - R0017 - Toilets - Boys (26.69 m2)</b>						
No Asbestos						
<b>B00F - R0018 - Movement (70.87 m2)</b>						
Wall Linings Internal	Flat AC Sheeting	10m2	Below windows	Good Condition (1)	Low (1)	Low Priority (2-3)
	1001/B00F/R0018/Wall Linings Internal/S8					<b>Chrysotile (white asbestos)</b>

2017

Product	Material Description	Extent	Location Reference	Material Condition	Risk Status	Control Priority
Sample No					Test Result	

**B00G - General Learning - 1972 - Brick/Block (Brick/Block)**

**Exterior**

Ceiling Voids	No Asbestos Found
Underfloor Voids - Slab on Ground	No Asbestos Found

**Interior**

**B00G - R0001 - Home Base (87.83 m2)**

Ceiling Structures/Linings	Vermiculite 1001/B00A/R0020/Ceiling Structures/Linings/S3	Limited Samples Taken
<i>Vermiculite Ceilings may contain asbestos. Asbestos testing MUST be conducted prior to any disturbance works</i>		

**B00G - R0002 - Practical Activities - 1hb (16.3 m2)**

Ceiling Structures/Linings	Vermiculite 1001/B00A/R0020/Ceiling Structures/Linings/S3	Limited Samples Taken
<i>Vermiculite Ceilings may contain asbestos. Asbestos testing MUST be conducted prior to any disturbance works</i>		

Floor Coverings Res/Textile	Vinyl Tiles 1001/B00H/R0003/Floor Coverings Res/Textile/S1	No Asbestos Detected
-----------------------------	---	----------------------

**B00G - R0003 - Toilets - Boys/Girls (3.05 m2)**

Ceiling Structures/Linings	Vermiculite 1001/B00A/R0020/Ceiling Structures/Linings/S3	Limited Samples Taken
<i>Vermiculite Ceilings may contain asbestos. Asbestos testing MUST be conducted prior to any disturbance works</i>		

**B00G - R0004 - Home Base (87.97 m2)**

Ceiling Structures/Linings	Vermiculite 1001/B00A/R0020/Ceiling Structures/Linings/S3	Limited Samples Taken
<i>Vermiculite Ceilings may contain asbestos. Asbestos testing MUST be conducted prior to any disturbance works</i>		

**B00G - R0005 - Practical Activities - 1hb (16.3 m2)**

Ceiling Structures/Linings	Vermiculite 1001/B00A/R0020/Ceiling Structures/Linings/S3	Limited Samples Taken
<i>Vermiculite Ceilings may contain asbestos. Asbestos testing MUST be conducted prior to any disturbance works</i>		

Floor Coverings Res/Textile	Vinyl Tiles 1001/B00H/R0003/Floor Coverings Res/Textile/S1	No Asbestos Detected
-----------------------------	---	----------------------

**B00G - R0006 - Toilets - Boys/Girls (3.18 m2)**

Ceiling Structures/Linings	Vermiculite 1001/B00A/R0020/Ceiling Structures/Linings/S3	Limited Samples Taken
<i>Vermiculite Ceilings may contain asbestos. Asbestos testing MUST be conducted prior to any disturbance works</i>		

**B00G - R0007 - Movement (3.11 m2)**

No Asbestos

**B00G - R0008 - Movement (3.11 m2)**

No Asbestos

**B00G - R0009 - Movement (3.11 m2)**

No Asbestos

**B00G - R0010 - Movement (3.11 m2)**

No Asbestos



Product	Material Description	Extent	Location Reference	Material Condition	Risk Status	Control Priority
Sample No					Test Result	

### B001 - General Learning/Special Purpose Learning - 2010 - Brick/Veneer (Brick/Veneer)

#### Exterior

Ceiling Voids	No Asbestos Found
Underfloor Voids - Slab on Ground	No Asbestos Found

#### Interior

##### B001 - R0001 - Special Programs Room (49.89 m2)

No Asbestos

##### B001 - R0002 - Special Programs Store (5.88 m2)

No Asbestos

##### B001 - R0003 - Home Base (60.75 m2)

No Asbestos

##### B001 - R0004 - Home Base Store (6.05 m2)

No Asbestos

##### B001 - R0005 - Practical Activities - 1hb (19.65 m2)

No Asbestos

##### B001 - R0006 - Withdrawal Space - 2hb (11.61 m2)

No Asbestos

##### B001 - R0007 - Home Base (60.41 m2)

No Asbestos

##### B001 - R0008 - Home Base Store (6.08 m2)

No Asbestos

##### B001 - R0009 - Practical Activities - 1hb (18.94 m2)

No Asbestos

##### B001 - R0010 - Home Base (60.75 m2)

No Asbestos

##### B001 - R0011 - Home Base Store (6.08 m2)

No Asbestos

##### B001 - R0012 - Practical Activities - 1hb (18.66 m2)

No Asbestos

##### B001 - R0013 - Withdrawal Space - 2hb (11.61 m2)

No Asbestos

##### B001 - R0014 - Home Base (60.41 m2)

No Asbestos

##### B001 - R0015 - Home Base Store (6.08 m2)

No Asbestos

##### B001 - R0016 - Practical Activities - 1hb (18.94 m2)

No Asbestos

##### B001 - R0017 - General Assistant/Bulk Store (22.42 m2)

No Asbestos

##### B001 - R0018 - Special Programs Room (50.67 m2)

No Asbestos

##### B001 - R0019 - Special Programs Store (22.42 m2)

No Asbestos

##### B001 - R0020 - External Movement (127.31 m2)

No Asbestos

Product	Material Description	Extent	Location Reference	Material Condition	Risk Status	Control Priority
Sample No					Test Result	

**Demountables**

**Demountable details as per the AMS records as of 15 Feb 2017.**

**OS 602 - D10007 - Learning Unit - Standard With P.A.A. : Placement Date - 14/12/2013**

Note: This refurbished demountable may have asbestos present in remnant mastic in window frames.

**Exterior**

No Asbestos Found.

**Interior**

**R1 - Learning space/withdrawal/entry**

No Asbestos Found.

**R2 - Home Base Store**

No Asbestos Found.

**OS 602 - D10501 - Learning Unit - Standard With P.A.A. : Placement Date - 28/12/2011**

Note: This refurbished demountable may have asbestos present in remnant mastic in window frames.

**Exterior**

No Asbestos Found.

**Interior**

**R1 - Learning space/withdrawal/entry**

No Asbestos Found.

**R2 - Home Base Store**

No Asbestos Found.

**OS 602 - D10537 - Learning Unit - Standard With P.A.A. : Placement Date - 28/12/2011**

**Exterior**

No Asbestos Found.

**Interior**

**R1 - Learning space/withdrawal/entry**

No Asbestos Found.

**R2 - Home Base Store**

No Asbestos Found.

**OS 510 - D10582 - Staff Common Room : Placement Date - 12/01/2015**

Note: This refurbished demountable may have asbestos present in remnant mastic in window frames.

**Exterior**

No Asbestos Found.

**Interior**

**R1 - Commonroom/staff room**

No Asbestos Found.

**R2 - Staff Toilet**

No Asbestos Found.

**R3 - Staff Toilet**

No Asbestos Found.

**R4 - Lobby**

No Asbestos Found.

**OS 602 - D11636 - Learning Unit - Standard With P.A.A. : Placement Date - 23/01/2013**

Note: This refurbished demountable may have asbestos present in remnant mastic in window frames.

**Exterior**

No Asbestos Found.

Product	Material Description	Extent	Location Reference	Material Condition	Risk Status	Control Priority
Sample No					Test Result	
<b>Interior</b>						
<b>R1 - Learning space/withdrawal/entry</b>						
No Asbestos Found.						
<b>R2 - Home Base Store</b>						
No Asbestos Found.						
<b>OS 602 - D12951 - Learning Unit - Standard With P.A.A. : Placement Date - 12/12/2014</b>						
Note: This refurbished demountable may have asbestos present in remnant mastic in window frames.						
<b>Exterior</b>						
No Asbestos Found.						
<b>Interior</b>						
<b>R1 - Learning space/withdrawal/entry</b>						
No Asbestos Found.						
<b>R2 - Home Base Store</b>						
No Asbestos Found.						
<b>OS 602 - D13704 - Learning Unit - Standard With P.A.A. : Placement Date - 17/11/2016</b>						
Note: This refurbished demountable may have asbestos present in remnant mastic in window frames.						
<b>Exterior</b>						
No Asbestos Found.						
<b>Interior</b>						
<b>R1 - Learning space/withdrawal/entry</b>						
No Asbestos Found.						
<b>R2 - Home Base Store</b>						
No Asbestos Found.						
<b>OS 602 - D14021 - Learning Unit - Standard With P.A.A. : Placement Date - 23/01/2013</b>						
Note: This refurbished demountable may have asbestos present in remnant mastic in window frames.						
<b>Exterior</b>						
No Asbestos Found.						
<b>Interior</b>						
<b>R1 - Learning space/withdrawal/entry</b>						
No Asbestos Found.						
<b>R2 - Home Base Store</b>						
No Asbestos Found.						
<b>OS 602 - D14897 - Learning Unit - Standard With P.A.A. : Placement Date - 14/12/2013</b>						
Note: This refurbished demountable may have asbestos present in remnant mastic in window frames.						
<b>Exterior</b>						
No Asbestos Found.						
<b>Interior</b>						
<b>R1 - Learning space/withdrawal/entry</b>						
No Asbestos Found.						
<b>R2 - Home Base Store</b>						
No Asbestos Found.						
<b>OS 602 - D16238 - Learning Unit - Standard With P.A.A. : Placement Date - 25/11/2009</b>						
<b>Exterior</b>						
Step Treads	Compressed AC Sheet	Assumed Asbestos				1.08 m2
Landing	Compressed AC Sheet	Assumed Asbestos				1.2 m2
Eave Lining	Flat AC Sheet	Assumed Asbestos				11.52 m2

Product	Material Description	Extent	Location Reference	Material Condition	Risk Status	Control Priority
Sample No					Test Result	
<b>Interior</b>						
<b>R1 - Learning space/withdrawal/entry</b>						
Ceiling	Flat AC Sheet	Assumed Asbestos				70 m2
<b>R2 - Home Base Store</b>						
End wall panel	Flat AC Sheet	Assumed Asbestos				18 m2
Ceiling	Flat AC Sheet	Assumed Asbestos				3 m2

2017

Product	Material Description	Extent	Location Reference	Material Condition	Risk Status	Control Priority
Sample No					Test Result	

***Listing of Electronic Attachments as of 22/03/2017***

**Available Asbestos Related Electronic Files**

1001\_ASB\_010313\_AMP.pdf

\* Note : Refer to AMS for details of the attachment(s).

2017